

Volvo Construction Equipment
Building Tomorrow



WORLD-CLASS EXCAVATORS



Youtube video:
The Volvo excavator story

The legacy behind the Volvo performance excellence





Volvo has more than 185 years of technical know-how and 75 years of excavator experience from developing some of the world's finest earth moving machines.

With a history that can be traced all the way back to 1832, Volvo CE is one of the true pioneers of the construction equipment industry. Through its introduction of world famous innovations such as wheel loaders and articulated haulers, Volvo CE has revolutionized the construction equipment industry.

The history of the Volvo excavators is closely linked to that of the Swedish company Åkermans Gjuteri och Mekaniska Verkstad, founded in 1890. The company started out manufacturing equipment such as pumps and grinders and later moved into construction equipment. When the first Åkerman excavator was built in 1939, this 8 tonnes 300 dragline excavator became an instant success and marked the start of the company's international expansion.



Åkerman 300



Åkermans gradually expanded its product range and by 1985, more than 10,000 units of hydraulic excavators had been delivered to customers all over the world.

Focused on excavators

Over the following years, the excavator business gradually developed and by 1956, Åkermans was specialized within this product line. During the 1960s, the company introduced its first hydraulic excavator and these machines helped make Åkermans the most successful engineering company in Sweden during the 1970s.

Åkermans continued to develop high quality and high performance excavators and in the 1990s the company became part of the Volvo family. Åkermans' engineers were now facing a new, challenging task: the development of excavators under a new brand, Volvo.



Volvo EC210

Asian stronghold

In 1998, Volvo CE expanded its excavator business and established an Asian industrial stronghold through the acquisition of Samsung's Construction Equipment Division in Korea. Following this acquisition, Volvo added more than 185 years of industrial experience to Åkermans' longstanding legacy in European excavator design. This was combined with a strong focus on quality, safety and fuel efficiency and so began the development of a new generation of excavators.



Volvo also invested heavily into the Korean manufacturing plant in Changwon, harmonizing it with the high standards of Volvo. When the first two Volvo models from this facility (the EC210 and the EC240) were launched in 1999, the Volvo hallmark of quality, safety, productivity and fuel efficiency became apparent immediately.



Extended range of machinery

Volvo CE also utilized technology and know-how from its other product lines, like wheel loaders and articulated haulers – both of them world leaders with state-of-the-art product features. Volvo's unique expertise in these areas contributed to the outstanding fuel efficiency, productivity and low operational cost of the new excavator range.

Over the years, the Volvo range of excavators has been expanded continually in order to match the growth of its hauler equipment – machines are available from 1.5 to 90 tons. The most recent addition is the 90 ton Volvo EC950E excavator launched in 2016.

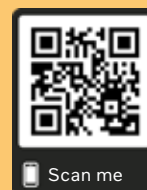
Still uncovering new ground

Volvo is world-renowned for a commitment to safety. Within the context of excavators, this means protecting both operators and the people working close to them.

Volvo also works closely with its customers to constantly develop new features bringing down their total cost of ownership. The innovations introduced by Volvo to its excavators include: a powerful engine which works in harmony with the optimized hydraulic system and the auto-idle function for lower fuel consumption, ergonomic and intuitive controls for better operator productivity; and wide-opening hoods for safe and easy access to components during servicing.

Global Milestones

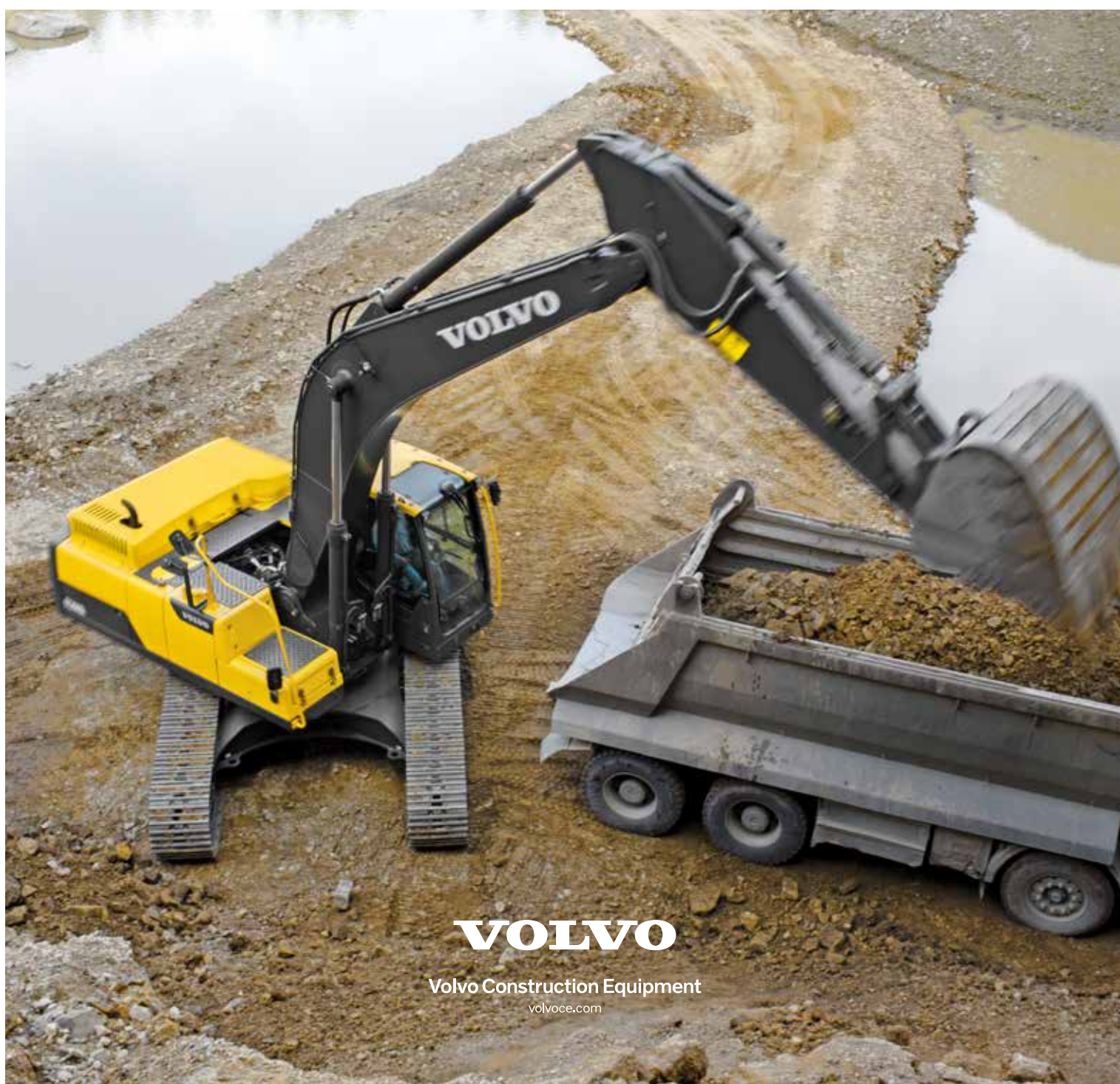
- | | | | |
|-------------|--|-------------|---|
| 1832 | Johan Theofron Munktell started his company | 1991 | Åkermans became a part of Volvo CE |
| 1844 | Bolinder Brothers started their company | 1998 | Volvo CE acquired Samsung Construction Equipment |
| 1890 | Åkermans started as a company | 1999 | New generation of excavators with Volvo technology launched |
| 1927 | Volvo was founded | 2001 | B Series excavators launched with Volvo engines |
| 1932 | Bolinder's and Munktell's companies merged to form AB Bolinder-Munktell (BM) | 2011 | D Series excavators launched with improved fuel efficiency |
| 1939 | Åkermans introduced its first excavator | 2014 | E Series excavators launched with Stage IV engines |
| 1950 | Volvo acquired Bolinder-Munktell | | |
| 1956 | Åkermans specialises in excavators | | |
| 1966 | Åkermans launches hydraulic excavators | | |



A global effort

With more than 185 years of construction and innovation expertise, Volvo CE is at the forefront of technological development. For us, the latest technology is not just nice to have, it is essential in order to stay competitive and secure long-term profitable growth. Intense research and development work is carried out at Volvo CE's R&D centres and manufacturing facilities worldwide. Dedicated teams use the Volvo Production System, a unique production philosophy using highly advanced technologies and techniques to ensure the high quality standards of Volvo.





VOLVO

Volvo Construction Equipment
volvoce.com