



Volvo Construction Equipment

2019-2020 COURSE BROCHURE

ROAD INSTITUTE®



**ROAD
INSTITUTE®**

PAVER AND COMPACTOR OPERATION AND MAINTENANCE

Objective: To utilize applied training techniques to instruct paving and compaction best practices to those people with responsibility for or interest in the operation/management of contemporary paving equipment. To correctly and safely utilize a paver and compactor to their fullest potential while achieving the highest quality work without sacrificing production or increasing costs.

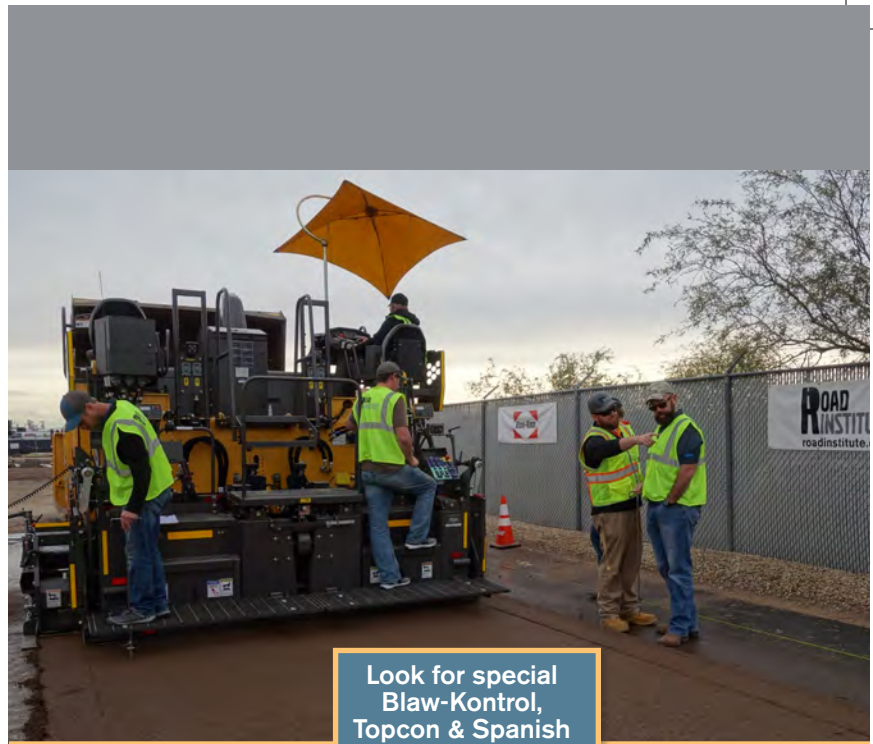
Who should attend: Any individual with interest in, or responsibility for, the laydown and/or compaction of HMA, WMA, SMA, or Thinlays™.

Duration: 3.5 Days (2 full days hands-on)

Course location: Shippensburg, PA
Phoenix, AZ

Description:

- Paving safety
- Materials discussion-HMA, SMA, WMA, Thinlays™
- Paver operation overview
- Paver preparation
- Paver and screed operation
 - Hands-on paver set-up and operation
 - Joint construction
 - Screed operation
 - Troubleshooting mat defects
 - AGS operation w/Blaw-Kontrol or Topcon
- Compactor operation overview
- Compactor preparation
- Compactor operation
 - Hands-on compactor set-up and operation
 - Joint compaction
 - Vibratory system operation
 - Overview and operation of Volvo Intelligent Compaction with Density Direct
 - Troubleshooting compaction issues
- Maintenance procedures



Look for special Blaw-Kontrol, Topcon & Spanish course dates

Session #	Session Dates	Course	C / D	Location
101	Nov. 12 - 15, 2019	Paver and Compactor Operation & Maintenance (Topcon)	C / D	AZ
102	Dec. 10 - 13, 2019	Paver and Compactor Operation & Maintenance (Blaw-Kontrol)	C / D	AZ
103	Jan. 7 - 10, 2020	Paver and Compactor Operation & Maintenance (Topcon)	C / D	AZ
105	Jan. 21 - 24, 2020	Paver and Compactor Operation & Maintenance (Topcon)	C / D	AZ
106	Feb. 11 - 14, 2020	Paver and Compactor Operation & Maintenance (Topcon)(ESP)	C / D	AZ
107	Feb. 25 - 28, 2020	Paver and Compactor Operation & Maintenance (Blaw-Kontrol)	C / D	AZ
108	Mar. 17 - 20, 2020	Paver and Compactor Operation & Maintenance (Topcon)	C / D	AZ
109	Mar. 31 - Apr. 3, 2020	Paver and Compactor Operation & Maintenance (Topcon)	C / D	AZ
111	Apr. 14 - 17, 2020	Paver and Compactor Operation & Maintenance (Blaw-Kontrol)	C / D	PA
112	Apr. 21 - 24, 2020	Paver and Compactor Operation & Maintenance (Topcon)	C / D	AZ
113	May 5 - 8, 2020	Paver and Compactor Operation & Maintenance (Topcon)	C / D	PA



ROAD INSTITUTE
scan to register or go to
roadinstitute.com



PAVING AND COMPACTION APPLICATION SEMINAR

Objective: To utilize applied training techniques to teach paving and compaction best practices to those people with responsibility for or interest in the operation/management of contemporary paving equipment. Also, to correctly and safely utilize a paver and compactor to their fullest potential while achieving the highest quality work without sacrificing production or increasing costs.

Who should attend: Any individual with interest in, or responsibility for, the laydown and/or compaction of HMA, WMA, SMA, or Thinlays™.

Duration: 2 Days (classroom only)

Course location: Shippensburg, PA

Description:

Best practices in paving

- Paving safety
- Materials discussion-HMA, SMA, WMA, Thinlays™
- Paver operation overview
- Paver tractor and screed operation
 - Proper machine setup
 - Controlling factors affecting screed
 - Managing material through paver
 - Achieving a quality mat
 - Joint construction
 - Automatic controls and referencing systems
 - Troubleshooting mat defects
 - Paver maintenance

Best practices in rolling

- Compactor operation overview
- Compactor operation
 - Compaction principles
 - Vibratory system
 - Factors affecting compaction
 - Compaction techniques
 - Joint compaction
 - Troubleshooting compaction deficiencies
 - Overview of Volvo Intelligent Compaction with Density Direct
 - Compactor maintenance
 - Applications



Session #	Session Dates	Course	C / D	Location
104	Jan. 14 - 15, 2020	Paving and Compaction Application Seminar	C / D	PA
110	Apr. 7 - 8, 2020	Paving and Compaction Application Seminar	C / D	PA



ROAD INSTITUTE®
scan to register or go to
roadinstitute.com

PAVER HYDRAULIC & ELECTRICAL SYSTEMS - P7000/P7000B (STEP 1)

PAVER HYDRAULIC & ELECTRICAL SYSTEMS - P7000/P7000B (STEP 2)*

Objective: To familiarize technicians with the hydraulic and electrical systems of the Volvo P7000 series pavers. This will include hands-on troubleshooting.

Who should attend: Anyone responsible for the service and/or repair of the Volvo P7000 series pavers.

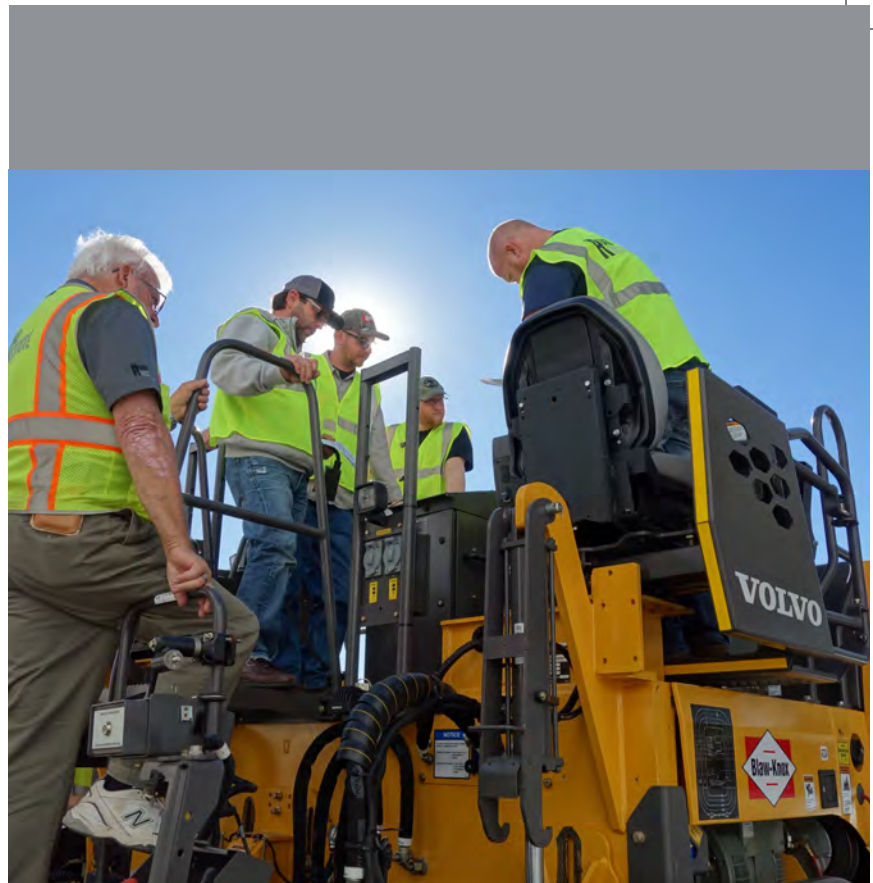
Duration: 4.5 Days (Step 1)
3 Days (Step 2)

Course location: Chambersburg, PA

Description:

- Paving safety
- Paving history
- Paver operation overview
- Electrical and hydraulic schematics
- Paver diagnostic tools
- Examine and troubleshoot screed heating system
- Mechanical adjustment of Volvo screeds
- Simulate paver set-up
- Automatic Grade & Slope (AGS) systems with a P7000/P7000B
- Hands-on exercises used throughout the course

* Step 2 courses may be attended after the successful completion of Step 1; where real life troubleshooting, diagnosis and repair will be the focus of the course.



Session #	Session Dates	Course	C / D	Location
202	Dec. 9 - 13, 2019	Paver Hydraulic and Electrical Systems P7000/P7000 B (Step 1)	C	PA
203	Jan. 20 - 24, 2020	Paver Hydraulic and Electrical Systems P7000/P7000 B (Step 1)	C	PA
205	Feb. 17 - 21, 2020	Paver Hydraulic and Electrical Systems P7000/P7000 B (Step 1)	C	PA
208	Mar. 24 - 26, 2020	Paver Hydraulic and Electrical Systems P7000/P7000 B (Step 2)	C	PA



ROAD INSTITUTE
scan to register or go to
roadinstitute.com

PAVER HYDRAULIC & ELECTRICAL SYSTEMS - P4410/P4410B

Objective: To familiarize technicians with the hydraulic and electrical systems of the Volvo Blaw-Knox pavers. This will include hands-on troubleshooting.

Who should attend: Anyone responsible for the service and/or repair of the Volvo Blaw-Knox pavers; PF2181 and PF4410/P4410B.

Duration: 4 Days

Course location: Chambersburg, PA

Description:

- Paving safety
- Paving history
- Paver operation overview
- Examine electrical and hydraulic systems
- Examine screed heating system
- Review various screeds and respective tractors
- Simulate paver set-up
- Automatic Grade & Slope (AGS) systems and troubleshooting
- Hands-on exercises used throughout the course



Session #	Session Dates	Course	C / D	Location
201	Nov. 5 - 8, 2019	Paver Hydraulic & Electrical Systems P4410/P4410B	C	PA



ROAD INSTITUTE®

scan to register or go to roadinstitute.com

SMALL ASPHALT COMPACTOR MECHANICS

Objective: This instructor led course will give you a general product overview of the Shippensburg manufactured Small Asphalt Compactors (less than 7 ton). General service course for personnel with basic asphalt compactor experience. Models covered: DD15, DD25B, DD30B, DD35B, CR30B and CR35B Small Asphalt Compactors.

Areas covered: Technical product information, system functions, troubleshooting and adjustments of the hydraulic system and electric system.

Who should attend: Any individual responsible for the service and repair of small (< 7 ton) ride-on asphalt compactors.

Duration: 3 Days

Course location: Chambersburg, PA

Description:

- Basic application
- Small asphalt compactor types and utilization
- Main systems' function and design
- Inspect and adjust components according to service manual
- Service machine according to operator's manual
- Basic troubleshooting activities
- Locate relevant methods in service documentation



Session #	Session Dates	Course	C / D	Location
209	Mar. 31 - Apr. 2, 2020	Small Asphalt Compactor Mechanics	C	PA



ROAD INSTITUTE[®]
scan to register or go to
roadinstitute.com



LARGE ASPHALT COMPACTOR MECHANICS

Objective: This instructor led course will give you a general product overview of the Large Asphalt Compactors (> 7 ton). General service course for personnel with basic asphalt compactor experience. Models covered: Shippensburg manufactured Large Asphalt Compactors DD110C thru DD140C. Areas covered: technical product information, system functions, troubleshooting and adjustments of the hydraulic system and electric system.

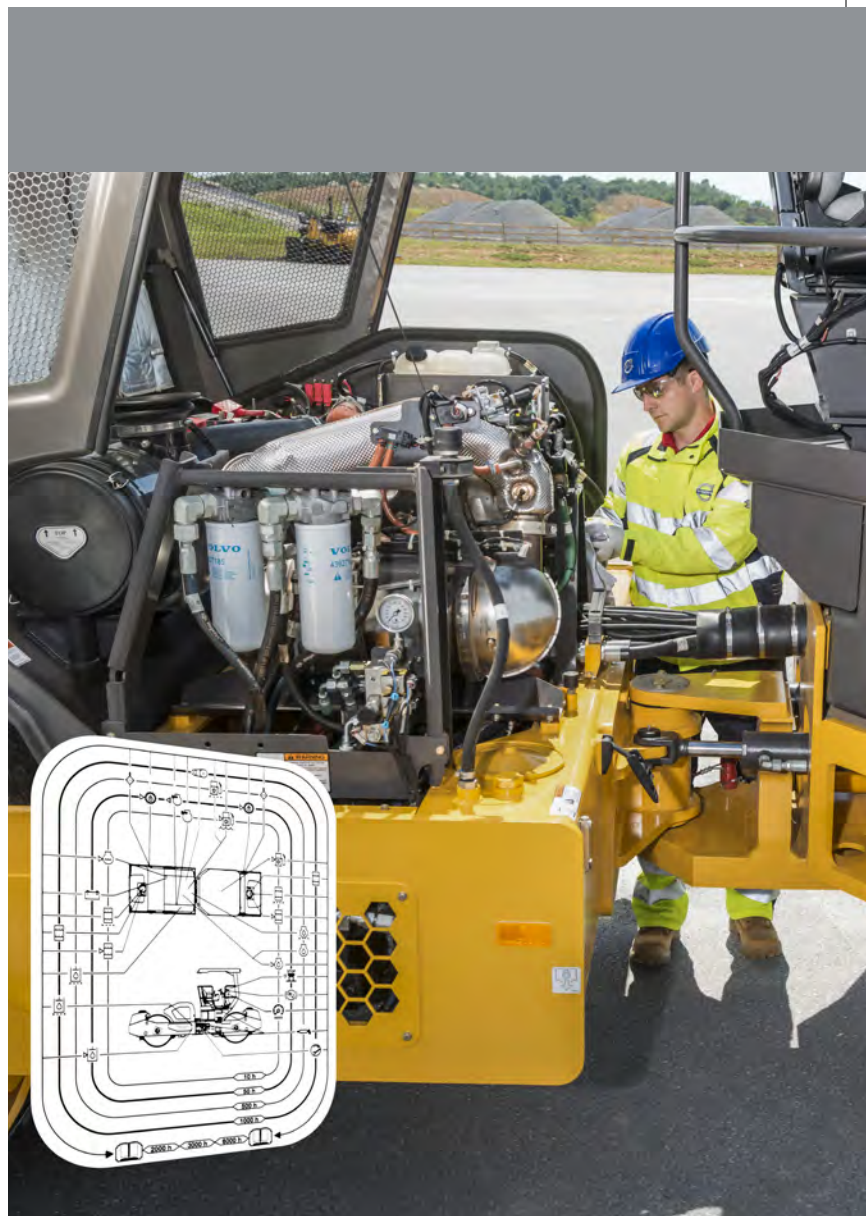
Who should attend: Any individual with more than one year experience and is responsible for the maintenance and repair of current models of Volvo large asphalt compactors.

Duration: 3 Days

Course location: Chambersburg, PA

Description:

- Basic application
- Large asphalt compactor types and utilization
- Main system function and design
- Inspection and adjustments according to service manual
- Service according to operator's manual
- Basic troubleshooting
- Locate relevant methods in service documentation



Session #	Session Dates	Course	C / D	Location
204	Feb. 4 - 6, 2020	Large Asphalt Compactor Mechanics	C	PA
206	Mar. 3 - 5, 2020	Large Asphalt Compactor Mechanics	C	PA



ROAD INSTITUTE[®]
 scan to register or go to
roadinstitute.com

SOIL COMPACTOR MECHANICS

Objective: This instructor led course will give you a general product overview of the Shippensburg manufactured Soil Compactors. General service course for personnel with basic soil compactor experience. Models covered: current production SD45B thru SD200 Soil Compactors. Areas covered: technical product information, system functions, troubleshooting and adjustments of the hydraulic system and electric system.

Who should attend: Any individual responsible for maintenance and repair of current models of soil compactors.

Duration: 3 Days

Course location: Chambersburg, PA

Description:

- Basic application
- Soil compactor types and utilization
- Main systems' function and design
- Inspection and adjustments according to service manual
- Service according to operator's manual
- Basic troubleshooting
- Find relevant methods in the service documentation



Session #	Session Dates	Course	C / D	Location
207	Mar. 10 - 12, 2020	Soil Compactor Mechanics	C	PA



ROAD INSTITUTE[®]

scan to register or go to
roadinstitute.com



ROAD INSTITUTE®

2019 - 2020 COURSE SCHEDULE BY DATE



Session #	Session Dates	Course	Location	C / D
201	Nov. 5 - 8, 2019	Paver Hydraulic & Electrical Systems - P4410/P4410B	PA	C
101	Nov. 12 - 15, 2019	Paver and Compactor Operation & Maintenance (Topcon)	AZ	C / D
202	Dec. 9 - 13, 2019	Paver Hydraulic & Electrical Systems - P7000/P7000B Step 1	PA	C
102	Dec. 10 - 13, 2019	Paver and Compactor Operation & Maintenance (Blaw-Kontrol)	AZ	C / D
103	Jan. 7 - 10, 2020	Paver and Compactor Operation & Maintenance (Topcon)	AZ	C / D
104	Jan. 14 - 15, 2020	Paving and Compaction Application Seminar	PA	C / D
203	Jan. 20 - 24, 2020	Paver Hydraulic & Electrical Systems - P7000/P7000B Step 1	PA	C
105	Jan. 21 - 24, 2020	Paver and Compactor Operation & Maintenance (Topcon)	AZ	C / D
204	Feb. 4 - 6, 2020	Large Asphalt Compactor Mechanics	PA	C
106	Feb. 11 - 14, 2020	Paver and Compactor Operation & Maintenance (Esp.)(Topcon)	AZ	C / D
205	Feb. 17 - 21, 2020	Paver Hydraulic & Electrical Systems - P7000/P7000B Step 1	PA	C
107	Feb. 25 - 28, 2020	Paver and Compactor Operation & Maintenance (Blaw-Kontrol)	AZ	C / D
206	Mar. 3 - 5, 2020	Large Asphalt Compactor Mechanics	PA	C
207	Mar. 10 - 12, 2020	Soil Compactor Mechanics	PA	C
108	Mar. 17 - 20, 2020	Paver and Compactor Operation & Maintenance (Topcon)	AZ	C / D
208	Mar. 24 - 26, 2020	Paver Hydraulic & Electrical Systems - P7000/P7000B Step 2	PA	C
109	Mar. 31 - Apr. 3, 2020	Paver and Compactor Operation & Maintenance (Topcon)	AZ	C / D
209	Mar. 31 - Apr. 2, 2020	Small Asphalt Compactor Mechanics	PA	C
110	Apr. 7 - 8, 2020	Paving and Compaction Application Seminar	PA	C / D
111	Apr. 14 - 17, 2020	Paver and Compactor Operation & Maintenance (Blaw-Kontrol)	PA	C / D
112	Apr. 21 - 24, 2020	Paver and Compactor Operation & Maintenance (Topcon)	AZ	C / D
113	May 5 - 8, 2020	Paver and Compactor Operation & Maintenance (Topcon)	PA	C / D



*Change in course
PA=Chambersburg or Shippensburg / AZ=Phoenix

roadinstitute.com
6/19/2019

C = Customer + Industry Personnel
D = Dealer or C / D = Both
Esp. = Spanish

HOTEL AND TRANSPORTATION INFORMATION

Factory Training Facilities:

**1280 Superior Ave.
Chambersburg, PA.**

**200 Rowe Rd.
Shippensburg, PA.**

The closest airports are:

Harrisburg, PA (MDT) 75 min. away
Baltimore, MD (BWI) 120 min. away
Washington DC (IAD) 120 min. away

Hotels available near the two facilities:

Country Inn & Suites - Phone: (717) 261-0900
Springhill Suites by Marriott - Phone: (717) 263-1300
Holiday Inn Express - Phone: (717) 709-9009
Hampton Inn - Phone: (717) 261-9185
Courtyard by Marriott Shippensburg - Phone: (717) 477-0680

Phoenix Training Facility:

**4323 E. Winslow Ave.
Phoenix, AZ.**

The closest airport is Sky Harbor (PHX),

which is about 2 miles from the facility.
Airlines that fly into Phoenix: All major airlines.

Hotels available near the Phoenix facility:

Drury Inn and Suites - Phoenix Airport - Phone: (602) 437-8400
Holiday Inn and Suites - Phoenix Airport - Phone: (480) 543-1700

Transportation between airport and hotel and to and from training is the responsibility of the student.

REGISTRATION



Visit our web site at
roadinstitute.com to
register and for the most
up-to-date information.

For additional information or to register:

E-Register: roadinstitute.com

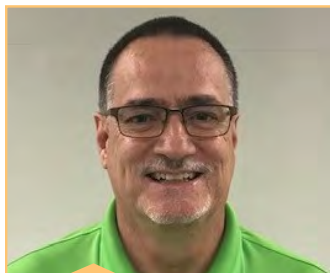
E-mail: roadinstitute@volvo.com

Mail to: **Volvo Construction Equipment**

Attention: Road Institute

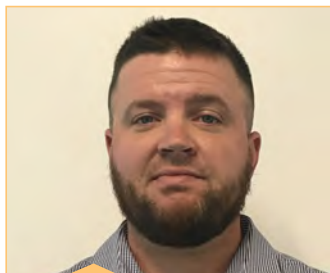
**1280 Superior Ave.
Chambersburg, PA 17201
Phone: 1 (866) 497-4501**

MEET OUR TEAM



Wayne Tomlinson

Wayne has 30 years of experience in roles related to equipment service, system specification and training. In 1999, Wayne joined the road machinery business as a Technical Service Representative assisting dealers and customers with compaction products. Since 2004, he's been the Road Institute® Compaction Training Specialist conducting operation and applications training for asphalt and soil compaction products.



Foster Ladlee

Foster has 12 years of paving experience with Blaw-Knox pavers and various other types' of related equipment. He has spent the majority of his career as a screed operator with additional time spent on compactors and as a skid steer mill operator. During this time, his company focused mainly on commercial, residential and road paving throughout the mid-Atlantic region. He joined the Road Institute® in 2018 as a Paver Training Specialist focusing on operation/application and technical service training.



Flemming Knudsen

Flemming has 45 years in the construction equipment industry and 29 years with paving specifically. He began working for a manufacturer, worked for a dealer and an end user. Most of his career was spent as a trainer and field product support representative. He joined Volvo and the GCD training group as a paver specialist in 2008 and joined the Road Institute® full time and focuses on paver operator and service training. Flemming retired in December 2018, but will continue to perform paver service training classes.

VOLVO

Volvo Construction Equipment

www.volvoce.com/na