



Volvo Construction Equipment

2017-2018 COURSE BROCHURE

ROAD INSTITUTE®



**ROAD
INSTITUTE®**

PAVER AND COMPACTOR OPERATION AND MAINTENANCE

Objective: To utilize applied training techniques to instruct paving and compaction best practices to those people with responsibility for or interest in the operation/management of contemporary paving equipment. To correctly and safely utilize a paver and compactor to their fullest potential while achieving the highest quality work without sacrificing production or increasing costs.

Who should attend: Any individual with interest in, or responsibility for, the laydown and/or compaction of HMA, WMA, SMA, or Thinlays™.

Duration: 3.5 Days (2 full days hands-on)

Course location: Shippensburg, PA
Phoenix, AZ

Description:

- Paving safety
- Materials discussion-HMA, SMA, WMA, Thinlays™.
- Paver operation overview
- Paver preparation
- Paver and screed operation
 - Hands-on paver set-up and operation
 - Joint construction
 - Screed operation
 - Troubleshooting mat defects
- Compactor operation overview
- Compactor preparation
- Compactor operation
 - Hands-on compactor set-up and operation
 - Joint compaction
 - Vibratory system operation
 - Overview and operation of Volvo Intelligent Compaction with Density Direct
 - Troubleshooting compaction issues
- Maintenance procedures
- Section included on milling basics
 - Benefits to paving and compaction



Look for special WMA, Topcon & Spanish course dates

Session #	Session Dates	Course	C / D	Location
101	Oct. 24 - 27, 2017	Paver and Compactor Operation & Maintenance (Topcon)	C / D	PA
102	Nov. 7 - 10, 2017	Paver and Compactor Operation & Maintenance (Blaw-Kontrol)	C / D	AZ
104	Dec. 12 - 15, 2017	Paver and Compactor Operation & Maintenance (Topcon)(WMA)	C / D	AZ
105	Jan. 9 - 12, 2018	Paver and Compactor Operation & Maintenance (Topcon)(WMA)	C / D	AZ
107	Feb. 13 - 16, 2018	Paver and Compactor Operation & Maintenance (Topcon)(ESP)	C / D	AZ
109	Feb. 27 - Mar. 2, 2018	Paver and Compactor Operation & Maintenance (Topcon)(WMA)	C / D	AZ
110	Mar. 20 - 23, 2018	Paver and Compactor Operation & Maintenance (Blaw-Kontrol)(WMA)	C / D	AZ
111	Apr. 10 - 13, 2018	Paver and Compactor Operation & Maintenance (Topcon)	C / D	AZ
112	Apr. 24 - 27, 2018	Paver and Compactor Operation & Maintenance (Topcon)	C / D	PA
113	May 8 - 11, 2018	Paver and Compactor Operation & Maintenance (Blaw-Kontrol)	C / D	PA



ROAD INSTITUTE
scan to register or go to
www.roadinstitute.com

AUTOMATIC GRADE AND SLOPE SYSTEMS

Objective: To teach those people with responsibility for or interest, in the operation of the Automatic Grade and Slope Systems (Blaw-Kontrol and Topcon System V and/or P32); and how to correctly and safely set up, operate and troubleshoot common control issues that often result in poor ride-ability and/or poor joint construction.

Who should attend: Any individual with interest in, or responsibility for, the operation of Automatic Grade and Slope Paving Systems.

Duration: 3 Days

Course location: Chambersburg, PA

Description:

- Paving safety
- Applications
- Paver operation principles
- Component identification, installation, and operation of:
 - Blaw-Kontrol AGS 7.5
 - Ultra Eye 5
 - Topcon System V and/or P32 Sonic Averaging System (SAS)
- Hands-on installation and operation



Session #	Session Dates	Course	C / D	Location
108	Feb. 20 - 22, 2018	Automatic Grade and Slope Systems	C / D	PA



**ROAD
INSTITUTE®**

scan to register or go to
www.roadinstitute.com

PAVER SCREED OPERATION AND ADJUSTMENT

Objective: To teach people with responsibility or interest in, the principles of operation of the paver, maintenance, mechanical adjustments, screed set-up, and screed running adjustments to ensure paving quality.

Who should attend: Any individual with interest in, or responsibility for, preparation, start up and running adjustment of Volvo pavers & screeds.

Duration: 3 Days

Course location: Chambersburg, PA

Description:

- Paving safety
- Screed operation principles
- Machine preparation
- Automatic auger/conveyor sensor installation
- Mat defect identification and correction
- Paver screed adjustment and set-up
- Hands-on set-up of screed components
- Screed heating and components
- Managing material through the paver
- Screed maintenance



Session #	Session Dates	Course	C / D	Location
106	Jan. 16 - 18, 2018	Paver Screed Operation and Adjustment	C / D	PA



**ROAD
RINSTITUTE®**

scan to register or go to
www.roadinstitute.com

PAVING AND COMPACTION APPLICATION SEMINAR

Objective: To utilize applied training techniques to teach paving and compaction best practices to those people with responsibility for or interest in the operation/management of contemporary paving equipment. Also, to correctly and safely utilize a paver and compactor to their fullest potential while achieving the highest quality work without sacrificing production or increasing costs.

Who should attend: Any individual with interest in, or responsibility for, the laydown and/or compaction of HMA, WMA, SMA, or Thinlays™.

Duration: 2 Days (classroom only)

Course location: Shippensburg, PA

Description:

Best practices in paving

- Paving safety
- Materials discussion-HMA, SMA, WMA, Thinlays™.
- Paver operation overview
- Paver tractor and screed operation
 - Proper machine setup
 - Controlling factors affecting screed
 - Managing material through paver
 - Achieving a quality mat
 - Joint construction
 - Automatic controls and referencing systems
 - Troubleshooting mat defects
 - Paver maintenance

Best practices in rolling

- Compactor operation overview
- Compactor operation
 - Compaction principles
 - Vibratory system
 - Factors affecting compaction
 - Compaction techniques
 - Joint compaction
 - Troubleshooting compaction deficiencies
 - Overview of Volvo Intelligent Compaction with Density Direct
 - Compactor maintenance
 - Applications

Section included on milling basics

- Benefits to paving and compaction



Session #	Session Dates	Course	C / D	Location
103	Nov. 29 - 30, 2017	Paving and Compaction Application Seminar	C / D	PA
114	May 15 - 16, 2018	Paving and Compaction Application Seminar	C / D	PA



ROAD INSTITUTE®
 scan to register or go to
www.roadinstitute.com

SOIL COMPACTION APPLICATION SEMINAR

Objective: To teach people with responsibility for or interest in the operation of soil compaction equipment to correctly and safely utilize a soil compactor to its fullest potential while achieving the highest quality work without sacrificing production or increasing costs.

Who should attend: Any individual with interest in, or responsibility for, the compaction of soil materials.

Duration: 2 Days (classroom only)

Course location: Chambersburg, PA

Description:

- What is soil compaction?
- Definition of materials (types of soil)
- Soil compaction equipment
- What is vibratory compaction?
 - The vibratory system
- Principles of soil compactor operation
 - Factors affecting compaction
 - Trench compaction
 - Troubleshooting compaction issues



Session #	Session Dates	Course	C / D	Location
-----------	---------------	--------	-------	----------

Upon special request and based on instructor availability



ROAD INSTITUTE[®]

scan to register or go to
www.roadinstitute.com

PAVER HYDRAULIC & ELECTRICAL SYSTEMS - P7000/P7000B (STEP 1)

PAVER HYDRAULIC & ELECTRICAL SYSTEMS - P7000/P7000B (STEP 2)*

Objective: To familiarize technicians with the hydraulic and electrical systems of the Volvo P7000 series pavers. This will include hands-on troubleshooting.

Who should attend: Anyone responsible for the service and/or repair of the Volvo P7000 series pavers.

Duration: 4.5 Days (Step 1)
3 Days (Step 2)

Course location: Chambersburg, PA
Phoenix, AZ

Description:

- Paving safety
- Paving history
- Paver operation overview
- Electrical and hydraulic schematics
- Paver diagnostic tools
- Examine and troubleshoot screed heating system
- Mechanical adjustment of Volvo screeds
- Simulate paver set-up
- Automatic Grade & Slope (AGS) systems with a P7000/P7000B
- Hands-on exercises used throughout the course

* Step 2 courses may be attended after the successful completion of Step 1; where real life troubleshooting, diagnosis and repair will be the focus of the course.



Session #	Session Dates	Course	C / D	Location
202	Dec. 4 - 8, 2017	Paver Hydraulic and Electrical Systems P7000/P7000 B (Step 1)	C/D	PA
205	Jan. 22 - 26, 2018	Paver Hydraulic and Electrical Systems P7000/P7000 B (Step 1)	C	AZ
206	Feb. 5 - 9, 2018	Paver Hydraulic and Electrical Systems P7000/P7000 B (Step 1)	C	PA
209	Mar. 12 - 16, 2018	Paver Hydraulic and Electrical Systems P7000/P7000 B (Step 1)	C	PA
210	Apr. 3 - 5, 2018	Paver Hydraulic and Electrical Systems P7000/P7000 B (Step 2)	C	PA



ROAD INSTITUTE®

scan to register or go to www.roadinstitute.com

PAVER HYDRAULIC & ELECTRICAL SYSTEMS - BLAW-KNOX (STEP 1)

Objective: To familiarize technicians with the hydraulic and electrical systems of the Volvo Blaw-Knox pavers. This will include hands-on troubleshooting.

Who should attend: Anyone responsible for the service and/or repair of the Volvo Blaw-Knox pavers; PF2181 and PF4410/P4410B.

Duration: 4 Days

Course location: Chambersburg, PA

Description:

- Paving safety
- Paving history
- Paver operation overview
- Examine electrical and hydraulic systems
- Examine screed heating system
- Review various screeds and respective tractors
- Simulate paver set-up
- Automatic Grade & Slope (AGS) systems and troubleshooting
- Hands-on exercises used throughout the course



Session #	Session Dates	Course	C / D	Location
201	Nov. 14 - 17, 2017	Paver Hydraulic and Electrical Systems B-K (Step 1)	C	PA
211	May 22 - 25 2018	Paver Hydraulic and Electrical Systems B-K (Step 1)	C	PA



ROAD INSTITUTE®

scan to register or go to
www.roadinstitute.com

SMALL ASPHALT COMPACTOR MECHANICS (STEP 1 & 2)*

Objective: This instructor led course will give you a general product overview of the Shippensburg manufactured Small Asphalt Compactors (less than 7 ton). General service course for personnel with basic asphalt compactor experience. Models covered: DD15, DD25B, DD30B/DD35B, CR24 Small Asphalt Compactors.

Areas covered: Technical product information, system functions, troubleshooting and adjustments of the hydraulic system and electric system. Step 1 and Step 2 are combined in this course.

Who should attend: Any individual responsible for the service and repair of small (< 7 ton) ride-on asphalt compactors.

Duration: 3 Days

Course location: Chambersburg, PA

Description:

- Basic application
- Small asphalt compactor types and utilization
- Main systems' function and design
- Inspect and adjust components according to service manual
- Service machine according to operator's manual
- Basic troubleshooting activities
- Locate relevant methods in service documentation

*Note: this is a combined course



Session #	Session Dates	Course	C / D	Location
203	Dec. 12 - 14, 2017	Small Asphalt Compactor Mechanics (Step 1&2)	C	PA



ROAD INSTITUTE[®]

scan to register or go to
www.roadinstitute.com

LARGE ASPHALT COMPACTOR MECHANICS (STEP 1)

Objective: This instructor led course will give you a general product overview of the Large Asphalt Compactors (> 7 ton). General service course for personnel with basic asphalt compactor experience. Models covered: Shippensburg manufactured Large Asphalt Compactors DD110 thru DD140C. Areas covered: technical product information, system functions, troubleshooting and adjustments of the hydraulic system and electric system.

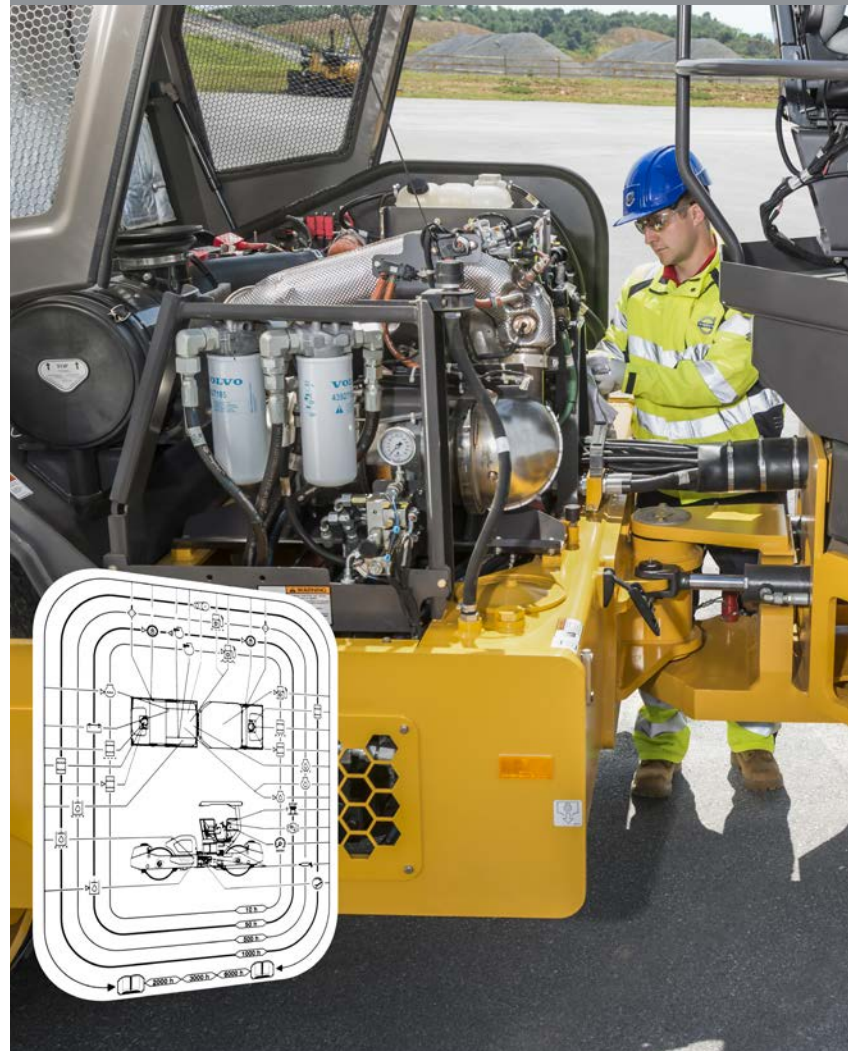
Who should attend: Any individual with more than one year experience and is responsible for the maintenance and repair of current models of Volvo large asphalt compactors.

Duration: 3 Days (Step 1)

Course location: Chambersburg, PA

Description:

- Basic application
- Large asphalt compactor types and utilization
- Main system function and design
- Inspection and adjustments according to service manual
- Service according to operator's manual
- Basic troubleshooting
- Locate relevant methods in service documentation



Session #	Session Dates	Course	C / D	Location
204	Jan. 9 - 11, 2018	Large Asphalt Compactor Mechanics (Step 1)	C	PA
208	Mar. 6 - 8, 2018	Large Asphalt Compactor Mechanics (Step 1)	C	PA



ROAD INSTITUTE

scan to register or go to
www.roadinstitute.com

SOIL COMPACTOR MECHANICS (STEP 1)

Objective: This instructor led course will give you a general product overview of the Shippensburg manufactured Soil Compactors. General service course for personnel with basic soil compactor experience. Models covered: current production SD45B thru SD200 Soil Compactors. Areas covered: technical product information, system functions, troubleshooting and adjustments of the hydraulic system and electric system.

Who should attend: Any individual responsible for maintenance and repair of current models of soil compactors.

Duration: 3 Days (Step 1)

Course location: Chambersburg, PA

Description:

- Basic application
- Soil compactor types and utilization
- Main systems' function and design
- Inspection and adjustments according to service manual
- Service according to operator's manual
- Basic troubleshooting
- Find relevant methods in the service documentation



Session #	Session Dates	Course	C / D	Location
207	Feb. 13 - 15, 2018	Soil Compactor Mechanics (Step 1)	C	PA



ROAD INSTITUTE®

scan to register or go to
www.roadinstitute.com

MEET OUR TEAM



Wayne Tomlinson

Wayne has 28 years of experience in roles related to equipment service, system specification and training. In 1999, Wayne joined the road machinery business as a Technical Service Representative assisting dealers and customers with compaction products. Since 2004, he's been the Road Institute® Compaction Training Specialist conducting operation and applications training for asphalt and soil compaction products.



Flemming Knudsen

Flemming has 48 years in the construction equipment industry and 27 years with paving specifically. He began working for a manufacturer, worked for a dealer and an end user. Most of his career was spent as a trainer and field product support representative. He joined Volvo and the GCD training group as a paver specialist in 2008 and recently joined the Road Institute® full time and focuses on paver operator and service training.



Stan Rakowski

Stan has worked for manufacturers of compaction and road building equipment since 1979, and has 37 years of factory and field experience with compaction equipment. He began working as a service representative for a compaction equipment manufacturer traveling extensively for new machine start-up, operator training and service training for dealers and customers and to solve problems in the field. Duties also included production of technical manuals and teaching of efficient operating methods and best practice techniques to improve quality of asphalt pavements. He joined Volvo and the GCD group in 2011, joined CST in 2015, and focuses on compaction and skid steer service training.



Session #	Session Dates	Course	Location	C / D
101	Oct. 24 - 27, 2017	Paver and Compactor Operation & Maintenance (Topcon)	PA	C / D
102	Nov. 7 - 10, 2017	Paver and Compactor Operation & Maintenance (Blaw-Kontrol)	AZ	C / D
201	Nov. 14 - 17, 2017	Paver Hydraulic and Electrical Systems - Blaw-Knox (Step 1)	PA	C
103	Nov. 29 - 30, 2017	Paving and Compaction Application Seminar	PA	C / D
202	Dec. 4 - 8, 2017	Paver Hydraulic and Electrical Systems - P7000/P7000B (Step 1)	PA	C
104	Dec. 12 - 15, 2017	Paver and Compactor Operation & Maintenance (Topcon)(WMA)	AZ	C / D
203	Dec. 12 - 14, 2017	Small Asphalt Compactor Mechanics (Step 1 & 2)	PA	C
105	Jan. 9 - 12, 2018	Paver and Compactor Operation & Maintenance (Topcon)(WMA)	AZ	C / D
204	Jan. 9 - 11, 2018	Large Asphalt Compactor Mechanics (Step 1)	PA	C
106	Jan. 16 - 18, 2018	Paver Screed Operation and Adjustment	PA	C / D
205	Jan. 22 - 26, 2018	Paver Hydraulic and Electrical Systems - P7000/P7000B (Step 1)	AZ	C
206	Feb. 5 - 9, 2018	Paver Hydraulic and Electrical Systems - P7000/P7000B (Step 1)	PA	C
107	Feb. 13 - 16, 2018	Paver and Compactor Operation & Maintenance (Topcon)(ESP.)	AZ	C / D
207	Feb. 13 - 15, 2018	Soil Compactor Mechanics (Step 1)	PA	C
108	Feb. 20 - 22, 2018	Automatic Grade and Slope Systems	PA	C / D
109	Feb. 27 - Mar. 2, 2018	Paver and Compactor Operation & Maintenance (Topcon)(WMA)	AZ	C
208	Mar. 6 - 8, 2018	Large Asphalt Compactor Mechanics (Step 1)	PA	C
209	Mar. 12 - 16, 2018	Paver Hydraulic and Electrical Systems - P7000/P7000B (Step 1)	PA	C
110	Mar. 20 - 23, 2018	Paver and Compactor Operation & Maintenance (Blaw-Kontrol)(WMA)	AZ	C / D
210	Apr. 3 - 5, 2018	Paver Hydraulic and Electrical Systems - P7000/P7000B (Step 2)	PA	C
111	Apr. 10 - 13, 2018	Paver and Compactor Operation & Maintenance (Topcon)	AZ	C / D
112	Apr. 24 - 27, 2018	Paver and Compactor Operation & Maintenance (Topcon)	PA	C / D
113	May 8 - 11, 2018	Paver and Compactor Operation & Maintenance (Blaw-Kontrol)	PA	C
114	May 15 - 16, 2018	Paving and Compaction Application Seminar	PA	C / D
211	May 22 - 25, 2018	Paver Hydraulic and Electrical Systems - Blaw-Knox (Step 1)	PA	C



*Change in course
PA=Chambersburg or Shippensburg / AZ=Phoenix

C = Customer + Industry Personnel
D = Dealer or C / D = Both
Esp. = Spanish



Session #	Session Dates	Course	Location	C / D
108	Feb. 20 - 22, 2018	Automatic Grade and Slope Systems	PA	C / D
204	Jan. 9 - 11, 2018	Large Asphalt Compactor Mechanics (Step 1)	PA	C
208	Mar. 6 - 8, 2018	Large Asphalt Compactor Mechanics (Step 1)	PA	C
101	Oct. 24 - 27, 2017	Paver and Compactor Operation & Maintenance (Topcon)	PA	C / D
102	Nov. 7 - 10, 2017	Paver and Compactor Operation & Maintenance (Blaw-Kontrol)	AZ	C / D
104	Dec. 12 - 15, 2017	Paver and Compactor Operation & Maintenance (Topcon)(WMA)	AZ	C / D
105	Jan. 9 - 12, 2018	Paver and Compactor Operation & Maintenance (Topcon)(WMA)	AZ	C / D
107	Feb. 13 - 16, 2018	Paver and Compactor Operation & Maintenance (Topcon)(ESP.)	AZ	C / D
109	Feb. 27 - Mar. 2, 2018	Paver and Compactor Operation & Maintenance (Topcon)(WMA)	AZ	C / D
110	Mar. 20 - 23, 2018	Paver and Compactor Operation & Maintenance (Blaw-Kontrol)(WMA)	AZ	C / D
111	Apr. 10 - 13, 2018	Paver and Compactor Operation & Maintenance (Topcon)	AZ	C / D
112	Apr. 24 - 27, 2018	Paver and Compactor Operation & Maintenance (Topcon)	PA	C / D
113	May 8 - 11, 2018	Paver and Compactor Operation & Maintenance (Blaw-Kontrol)	PA	C / D
201	Nov. 14 - 17, 2017	Paver Hydraulic and Electrical Systems - Blaw-Knox (Step 1)	PA	C
211	May 22 - 25, 2018	Paver Hydraulic and Electrical Systems - Blaw-Knox (Step 1)	PA	C
202	Dec. 4 - 8, 2017	Paver Hydraulic and Electrical Systems - P7000/P7000B (Step 1)	PA	C
205	Jan. 22 - 26, 2018	Paver Hydraulic and Electrical Systems - P7000/P7000B (Step 1)	AZ	C
206	Feb. 5 - 9, 2018	Paver Hydraulic and Electrical Systems - P7000/P7000B (Step 1)	PA	C
209	Mar. 12 - 16, 2018	Paver Hydraulic and Electrical Systems - P7000/P7000B (Step 1)	PA	C
210	Apr. 3 - 5, 2018	Paver Hydraulic and Electrical Systems - P7000/P7000B (Step 2)	PA	C
106	Jan. 16 - 18, 2018	Paver Screed Operation and Adjustment	PA	C / D
103	Nov. 29 - 30, 2017	Paving and Compaction Application Seminar	PA	C / D
114	May 15 - 16, 2018	Paving and Compaction Application Seminar	PA	C / D
203	Dec. 12 - 14, 2017	Small Asphalt Compactor Mechanics (Step 1 & 2)	PA	C
207	Feb. 13 - 15, 2018	Soil Compactor Mechanics (Step 1)	PA	C



HOTEL AND TRANSPORTATION INFORMATION

Factory Training Facilities:

**1280 Superior Ave.
Chambersburg, PA.**

**200 Rowe Rd.
Shippensburg, PA.**

The closest airports are:

Harrisburg, PA (MDT) 75 min. away
Baltimore, MD (BWI) 120 min. away
Washington DC (IAD) 120 min. away

Hotels available near the two facilities:

Country Inn & Suites - Phone: (717) 261-0900
Holiday Inn Express - Phone: (717) 709-9009
Hampton Inn - Phone: (717) 261-9185
Fairfield Inn - Phone: (717) 264-1200
Courtyard Shippensburg - (717) 477-0680

Phoenix Training Facility:

**4323 E. Winslow Ave.
Phoenix, AZ.**

The closest airport is Sky Harbor (PHX),

which is about 2 miles from the facility.
Airlines that fly into Phoenix: All major airlines.

Hotels available near the Phoenix facility:

Drury Inn and Suites - Phoenix Airport - Phone: (602) 437-8400
Holiday Inn and Suites - Phoenix Airport - Phone: (480) 543-1700

Transportation between airport and hotel and to and from training is the responsibility of the student.

REGISTRATION



Visit our web site at
roadinstitute.com to
register and for the most
up-to-date information.

For additional information or to register:

E-Register: roadinstitute.com

E-mail: roadinstitute@volvo.com

Mail to: **Volvo Construction Equipment**

Attention: Road Institute

**1280 Superior Ave.
Chambersburg, PA 17201
Phone: 1 (866) 497-4501**

VOLVO

Volvo Construction Equipment

www.volvoce.com/na