

VOLVO PIPELAYERS

# PL3005D, PL4809D

Tipping capacity PL3005D: 51t 112,000 lb | PL4809D: 90t 198,000 lb



# A PASSION FOR PERFORMANCE.

At Volvo Construction Equipment, we're not just coming along for the ride. Developing products and services that raise productivity – we are confident we can lower costs and increase profits for industry experts. As part of the Volvo Group, we are passionate about innovative solutions to help you work smarter – not harder.

## Helping you to do more

Doing more with less is a trademark of Volvo Construction Equipment. High productivity has long been married to low energy consumption, ease of use and durability. When it comes to lowering life-cycle costs, Volvo is in a class of its own.

## Designed to fit your needs

There is a lot riding on creating solutions that are suited to the particular needs of different industry applications. Innovation often involves high technology – but it doesn't always have to. Some of our best ideas have been simple, based on a clear and deep understanding of our customers' working lives.



## You learn a lot in 180 years

Over the years, Volvo has advanced solutions that have revolutionized the use of construction equipment. No other name speaks Safety louder than Volvo. Protecting operators, those around them and minimizing our environmental impact are traditional values that continue to shape our product design philosophy.

## We're on your side

We back the Volvo brand with the best people. Volvo is truly a global enterprise, one that is on standby to support customers quickly and efficiently – wherever they are.

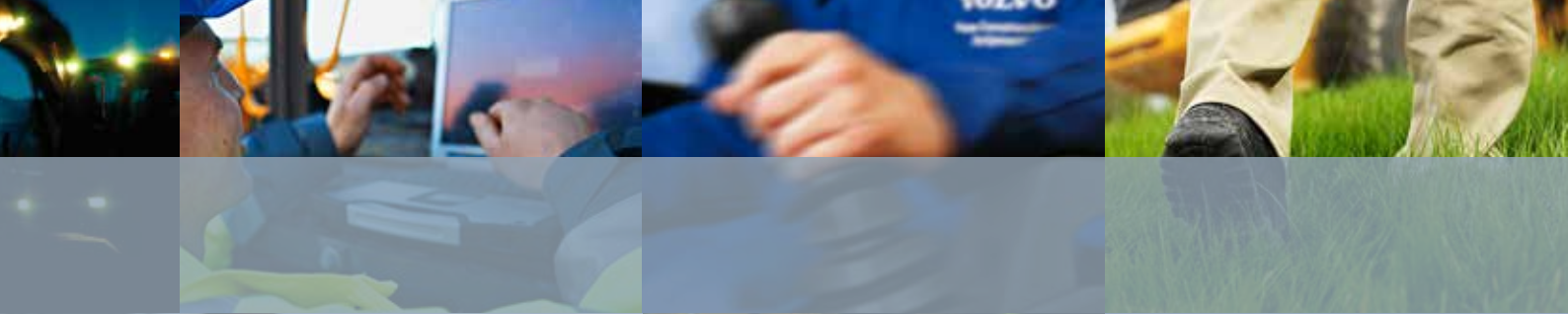
## We have a passion for performance.



Volvo Trucks

Renault Trucks

Mack Trucks



UD Trucks



Volvo Buses



Volvo Construction Equipment



Volvo Penta



Volvo Financial Services

# NEW LEVELS OF MANEUVERABILITY.



## 360° swing

Take advantage of ultimate lift and positioning performance with Volvo's 360° swing capability. The excavator-based design enables the upper structure to swing 360° – providing you with infinite pipe placement possibilities.

Volvo's revolutionary excavator-based rotating pipelayers deliver a competitive edge in the most demanding conditions. Featuring 360° swing capability for unlimited pipe placement options, you'll discover more opportunities with Volvo.

**Transportation**

The PL3005D is easily transported without disassembling components – simplifying road transportation.

**Mode switch**

Use split pump flow for better load controllability during simultaneous travel/lifting operations and combined pump flow for maximum performance speed when traveling or in stationary pipe laying operations. The Fine (F) Work Mode gives high pressure and low flow for maximum lifting power and minimal fuel use.



**Slew lock**

Preventing damage to the transmission, a heavy-duty mechanical slew lock secures the superstructure at any angle in relation to the undercarriage when holding a load on a slope or during tie-ins.

**Flag block**

Mounted at the end of the boom, the flag block pivots to the left and right to enable load self-centering and prevent damage to the wire rope. This increases safety when moving pipe on a slope.

# LIFTING YOUR PRODUCTIVITY.

Get a grip on your workload with Volvo's pipelayers. Featuring best-in-class lifting capacity and stability, you can trust Volvo to help you get the job done quickly, efficiently and safely.

## Working range

Volvo pipelayers feature long booms which, together with the boom mounting position, provide a higher hook height and reach – allowing the machines to easily lift and lower pipes from a safe distance.

## Boom extension

If more reach is needed, pre-prepared booms allow for quick and easy installation of an optional boom extension. This provides the same lifting capacity but with more versatility from improved reach and hook height – ideal for pipe unloading and tie-ins.



## PL4809D

Additional counterweights, mounted on the track side frames, lower the center of gravity for greater stability. This design enables easy cleaning for more machine uptime.

## PL3005D

The PL3005D features an extra heavy counterweight for increased stability when lifting or using a boom extension.



#### Best in class

Superior lifting capacity and stability make Volvo's pipelayers the most productive and safe machines for the job. With a 51 ton tipping capacity, the PL3005D handles large, heavy pipe with ease. \*90 ton tipping capacity for the PL4809D.



# UNRIVALLED SAFETY.



## LMS

The Load Management System allows operators to see what they can safely pick up relative to the slope. By monitoring slope inclinations as well as boom angle and orientation, the operator can easily manage the load at all times.



Safety is at the forefront of Volvo's pipelayer design. The unique Load Management System (LMS) is just one of the built-in safety features that will help to increase your performance and productivity. A Volvo pipelayer won't let you down.

#### LMS monitor

The operator receives machine load information, via wireless sensors, to the cab monitor. Visible and audible warning signals alert the operator when the load limit is reached.

#### LMS light bar

For increased safety, three different color (green, yellow and red) LED-lights on either side of the boom indicate the pipelayer's load status to other operators and the lowering-in foreman.



#### Anti two-block

The mechanical anti two-block system, which features a sensor, prevents the winch blocks from coming into contact during lifting – increasing safety.

# GET PRODUCTIVE IN COMFORT.

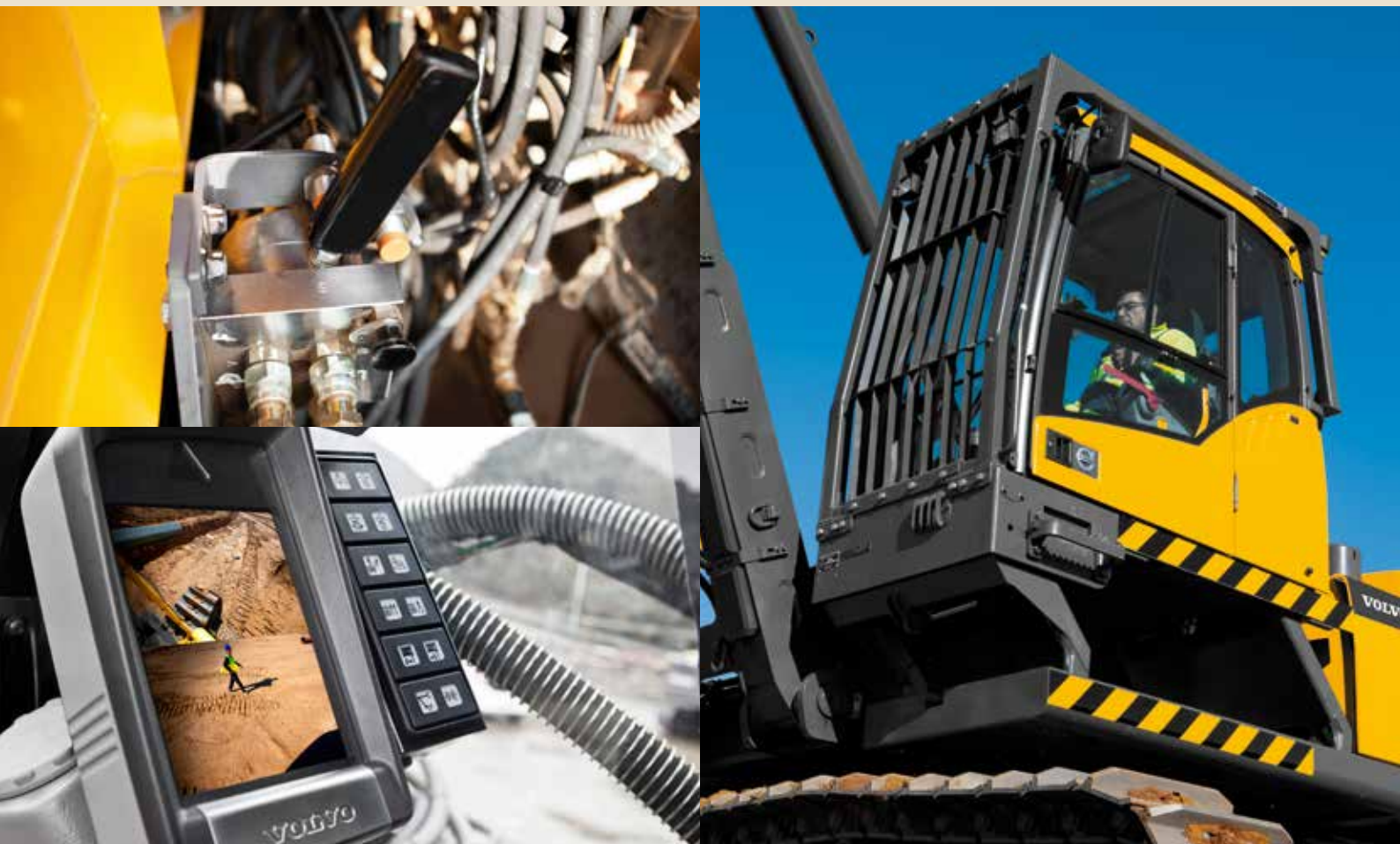
Volvo understands the importance of operator comfort. That's why we've carefully designed an industry leading, raised cab with built in comfort and excellent all-round visibility. Operators will feel in control and perform efficiently all day long in this superior working environment.

## Winch control

Volvo's operator friendly design allows you to choose your preferred joystick to operate the winch – simply select left or right via a pattern change control valve.

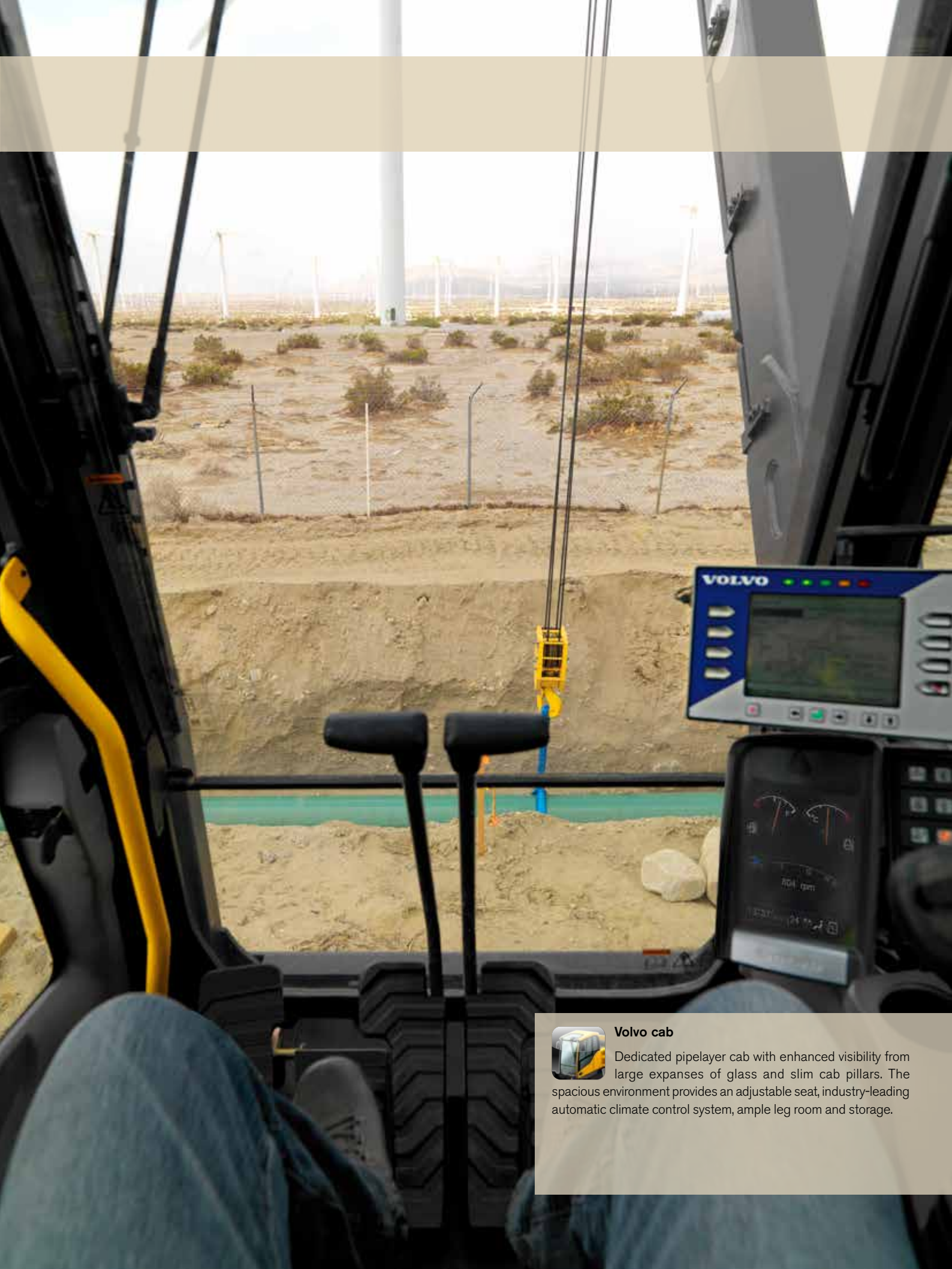
## Hydraulically elevated cab

In the elevated position, the unique four-bar cab riser system gives the operator excellent visibility into the trench as well as the surrounding worksite. In the lowered position, the pipelayer is easy to transport.



## Cameras

For increased safety, a rear view and side view camera provide increased visibility via the color I-ECU monitor - view both images together or individually.



#### Volvo cab

Dedicated pipelayer cab with enhanced visibility from large expanses of glass and slim cab pillars. The spacious environment provides an adjustable seat, industry-leading automatic climate control system, ample leg room and storage.

# PIPELAYER SUPREMACY.

## Reversed cylinder

The reverse mounted cylinder and optimized cylinder diameter and length greatly improve lateral visibility.

## Working range

Volvo pipelayers feature long booms which, together with the boom mounting position, provide a higher hook height and reach.

## Anti two-block device

For increased safety and machine uptime, the anti two-block system prevents the winch blocks from coming into contact during lifting.

## Commonality

80% commonality between pipelayer and excavator wear and maintenance parts ensures there is high availability of spare parts.



## LMS

Utilizing wireless transmitters the Load Management System allows operators to see what they can safely pick up relative to the



## Best in class

Superior lifting capacity and stability make Volvo's pipelayers the most productive and safe machines for the job.



## Easy conversion

Quickly and easily convert from rotating pipelayer to excavator with the optional digging equipment.

## Transportation ease

For easy relocation, the PL4809D has a retractable undercarriage and the PL3005D does not require component disassembly before transportation.



## Winch

Volvo's operator friendly design allows you to choose your preferred joystick to operate the winch.



### 360° swing

The superstructure can swing 360° providing you with infinite pipe placement possibilities.



### Four bar cab riser

When elevated, the unique four bar cab riser system provides excellent visibility to the worksite and into the trench.



### Serviceability

Grouped filters and service points are quick to access at ground level via large, wide compartment doors.

### Slew lock

A heavy-duty, mechanical slew lock secures the superstructure at every 10 degrees to the undercarriage when holding a load on a slope or during tie-ins.

### PL4809D Improved tractive force

A 70% improvement in tractive force allows the pipelayer to maneuver over tough terrain and climb a 30° slope while carrying a heavy load. The machine can also travel faster than its predecessor over flat ground.



# EXTREME VERSATILITY.



## Easy conversion

The pipelayer's hydraulic system is designed to be optimized for both pipelayer and excavator operations. Easily convert your machine with digging equipment (available as an option) for excellent digging power and performance equal to a standard excavator.

Volvo's excavator-based rotating pipelayers are designed to help you get the most out of your investment. The versatile machines can easily be converted to a standard excavator or used in other heavy lift applications, ensuring maximum machine uptime. Do more with Volvo.



### Fast conversion

Two people can quickly convert the pipelayer to an excavator in just one day thanks to factory pre-installed hydraulic lines and connections.



### AMS

The Attachment Management System (AMS) stores up to 18 attachment pre-sets and permits hydraulic flow (standard) and pressure (optional) to be adjusted, enabling the use of various attachments for increased versatility.

# MAXIMIZING YOUR UPTIME.

On site, time means money. That's why Volvo pipelayers boast easy access to grouped service points for fast and effortless maintenance and service checks. Commonality between genuine Volvo wear and maintenance parts ensures high availability, ensuring maximum machine uptime.

## Remote filters

The filters are separate from the engine and radiator for easier cleaning and servicing – giving you more machine uptime. Independent coolers provide excellent cooling.



## Genuine Volvo Parts

For the highest levels of quality, use only Genuine Volvo Parts. High availability and low costs are delivered through commonality of pipelayer and excavator wear and maintenance parts.

## CareTrack\*

Each Volvo pipelayer is equipped with CareTrack, the Volvo telematics system, as standard. Save fuel. Reduce costs. Maximize profitability. You can with CareTrack.

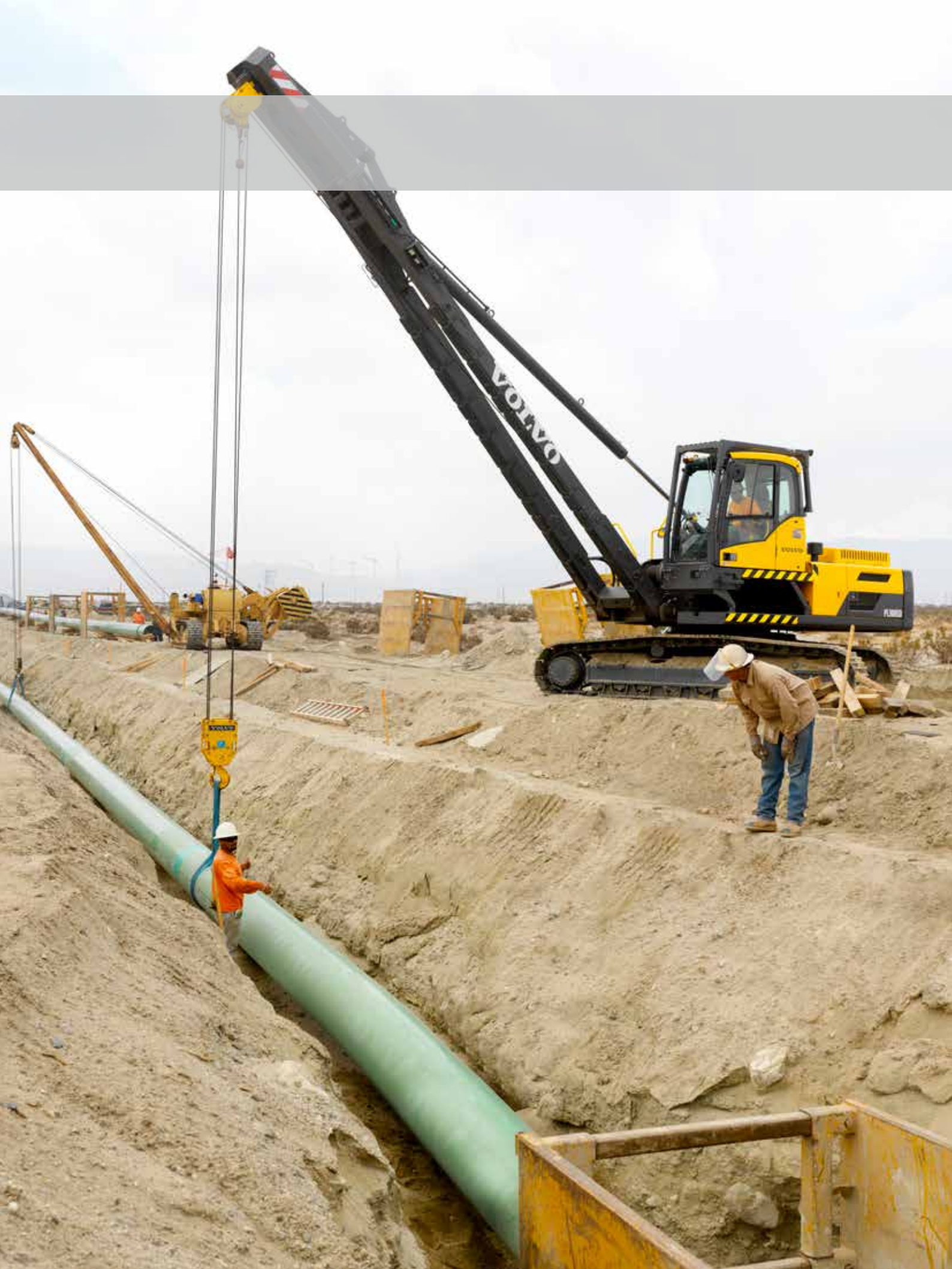
\* In markets where CareTrack is available.





### Serviceability

Grouped filters and service points are quick to access via large, wide compartment doors and are located at ground level wherever possible. Easy access for maintenance means regular checks get done faster, giving you more uptime.



# VOLVO PL3005D, PL4809D IN DETAIL.

## Engine

Volvo pipelayers use state-of-the-art diesel engines with Volvo Advanced Combustion Technology (V-ACT) to deliver lower emissions, superior performance and fuel efficiency. The EU Stage IIIB / EPA Tier 4 compliant engine uses precise, high-pressure fuel injectors, turbo charger and air-to-air intercooler as well as electronic engine controls to optimize machine performance.

PL3005D				
Engine	Volvo	D8H		
Max power at	r/s / rpm	30/1 800		
Net, ISO 9249/SAE J1349	kW/hp	169/227		
Gross, ISO 14396/SAE J1995	kW/hp	170/228		
Max torque at	Nm / rpm	1 139/1 350	lb-ft	840
No. of cylinders	6			
Displacement	l	7.8	cu in	476
Bore	mm	110	in	4.3
Stroke	mm	138	in	5.4

PL4809D				
Engine	Volvo	D13H		
Max power at	r/s / rpm	30/1 800		
Net, ISO 9249/SAE J1349	kW/hp	256/348		
Gross, ISO 14396/SAE J1995	kW/hp	265/360		
Max torque at	Nm / rpm	1 800/1 400	lb-ft	1,327
No. of cylinders	6			
Displacement	l	12.8	cu in	781
Bore	mm	131	in	5.2
Stroke	mm	158	in	6.2

## Electrical system

The high capacity electrical system is well protected. Waterproof double lock harness plugs are used to secure corrosion-free connections. Main relays and solenoid valves are shielded to prevent damage.

## Track Drive System

Each track is powered by an automatic shift two speed travel motor. Track brakes are multi-disc, spring applied and hydraulically released. Travel motors, brakes and planetary final drives are well protected within the track frame. \*PL4809D has user adjustable variable speed motors

Travel speed

PL3005D	km/h	5.9	mph	3.5
PL4809D	km/h	6	mph	3.7

## Undercarriage

PL4809D: The variable gauge system provides a wide gauge for working stability which can be retracted for reduced transport width. Removable track frame mounted counterweights provide added stability and lower the machine center of gravity – they are easily removed to reduce transport weight.

## Hydraulic system

The hydraulic system is designed for high productivity, high lifting capabilities, high maneuvering precision and superb fuel economy.

PL3005D				
Main pump, type 2 x variable displacement axial piston pumps				
Maximum flow	l/min	2 x 263	gpm	2 x 69
Pilot pump, type gear pump				
Maximum flow	l/min	18	gpm	4.8

PL4809D				
Main pump, type 2 x variable displacement axial piston pumps				
Maximum flow	l/min	2 x 358	gpm	2 x 94
Pilot pump, type gear pump				
Maximum flow	l/min	32	gpm	8.5

## Hydraulic motors

Travel: Variable displacement axial piston motor with mechanical brake

Swing: Fixed displacement axial piston motor with mechanical brake

## Cab

The Volvo Care Cab, with operator protective structure, provides safety along with more interior, leg and foot space. In work mode, the cab is hydraulically elevated by 496mm / 19.5" providing a wide field of vision to the entire job site, winch, boom and load block. Through the cab glass, transparent roof hatch and two-piece sliding door window, visibility is maximized. This improves operator confidence, comfort, safety and effectiveness. The deluxe seat features adjustable height, tilt, recline and forward-back settings as well as a retractable seat belt and selectable horizontal suspension which cushions the operator from vibrations.

## Boom

The asymmetric boom gives the operator a clear view to the hook block at all heights as well as into the trench for safe, precise load placement. The long boom provides high hook height and reach allowing the machine to work further from the trench.

## Winch

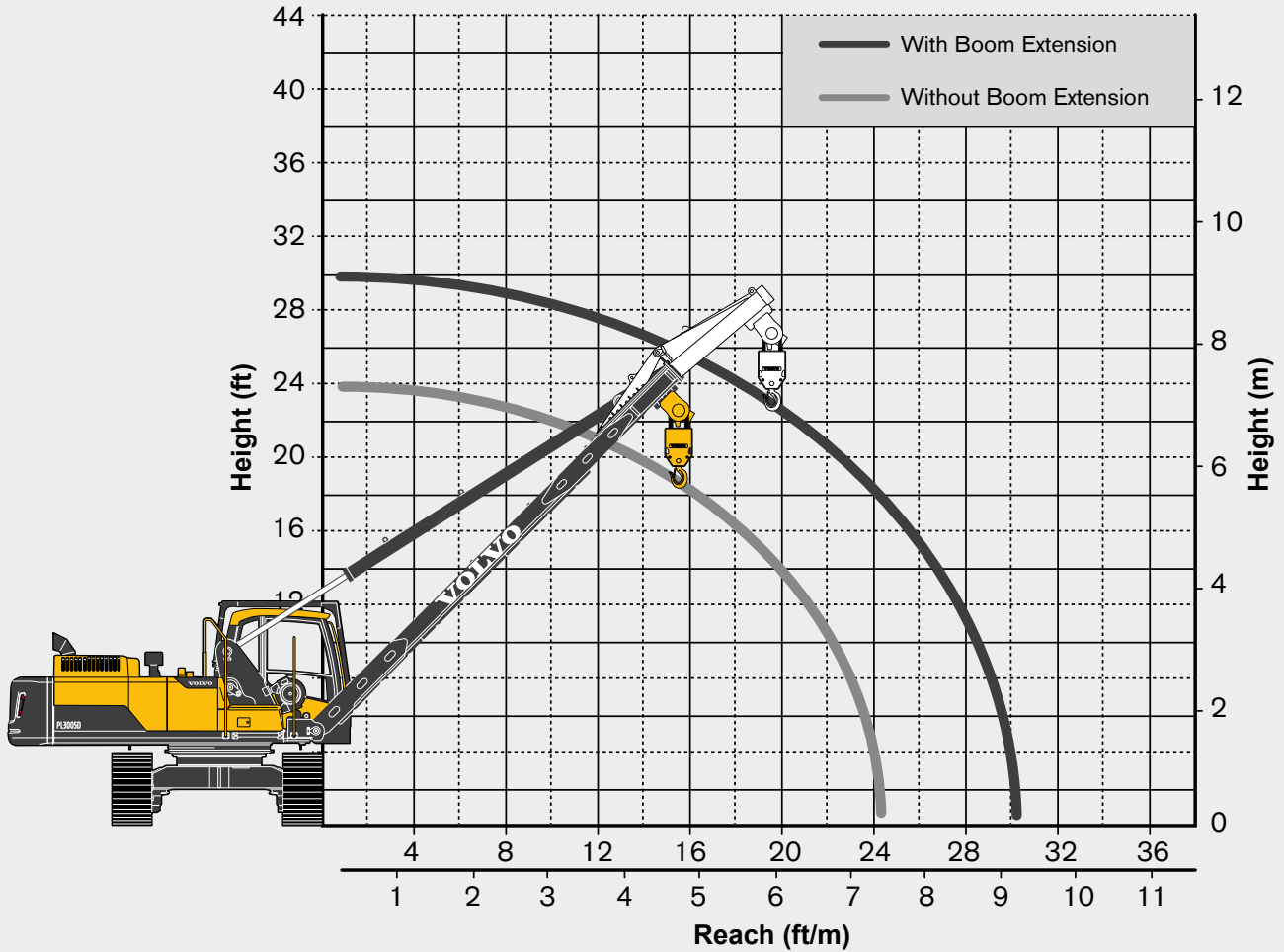
Planetary, high line pull winch delivers smooth lifting performance and precise control. The winch hydraulic motor has a multi-disc friction brake which is spring applied and hydraulically released.

## Load Management System

Operator confidence, effectiveness and safety are enhanced with Volvo's Load Management System. Volvo pipelayers utilize load, boom and superstructure-mounted sensors that allow onboard computers to monitor boom angle as well as cab orientation and inclination. The computer uses this information to compute and display actual loads and rated working loads in real-time through an in-cab monitor with audible warning systems. This allows the operator to maintain full control of the machine both on flat and level ground as well as on steep slopes throughout the 360 degree swing. The Load Management System utilizes boom-mounted load indicator lights for visual communication with ground staff and between adjacent machines during multiple lift operations.

# SPECIFICATIONS.

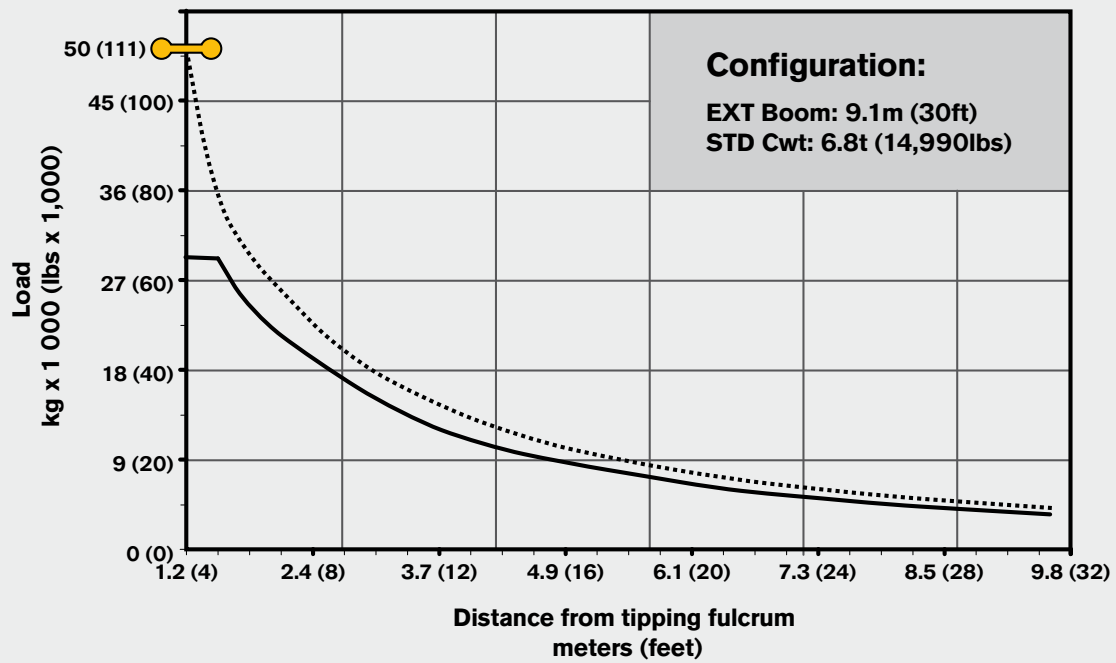
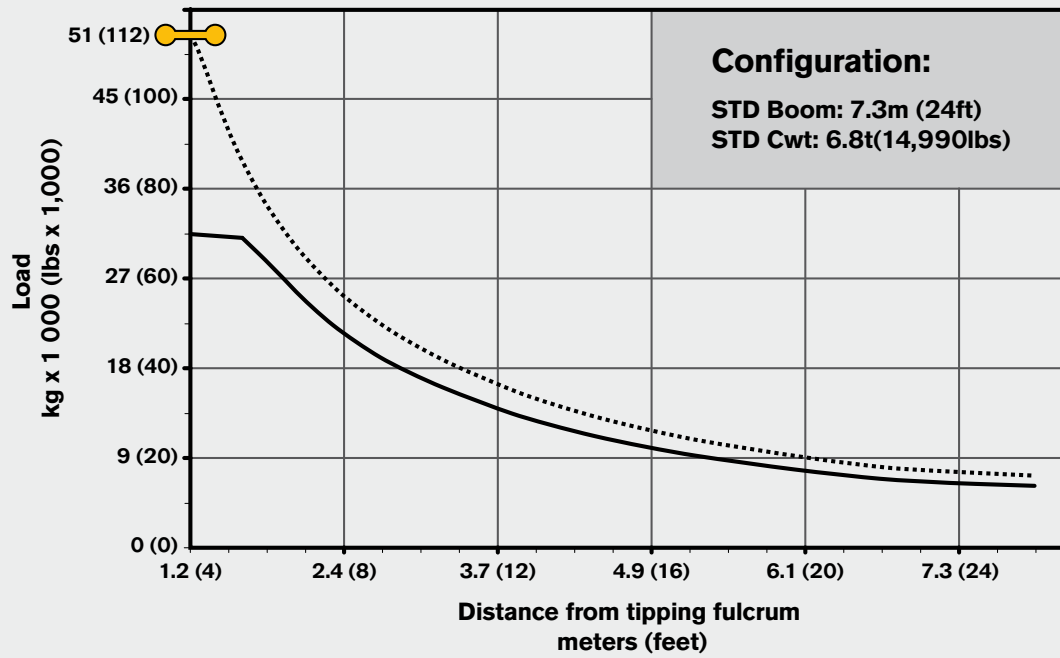
## WORKING RANGE / LOAD CHARTS WITH STANDARD CONFIGURATION PL3005D



### Footnotes PL3005D

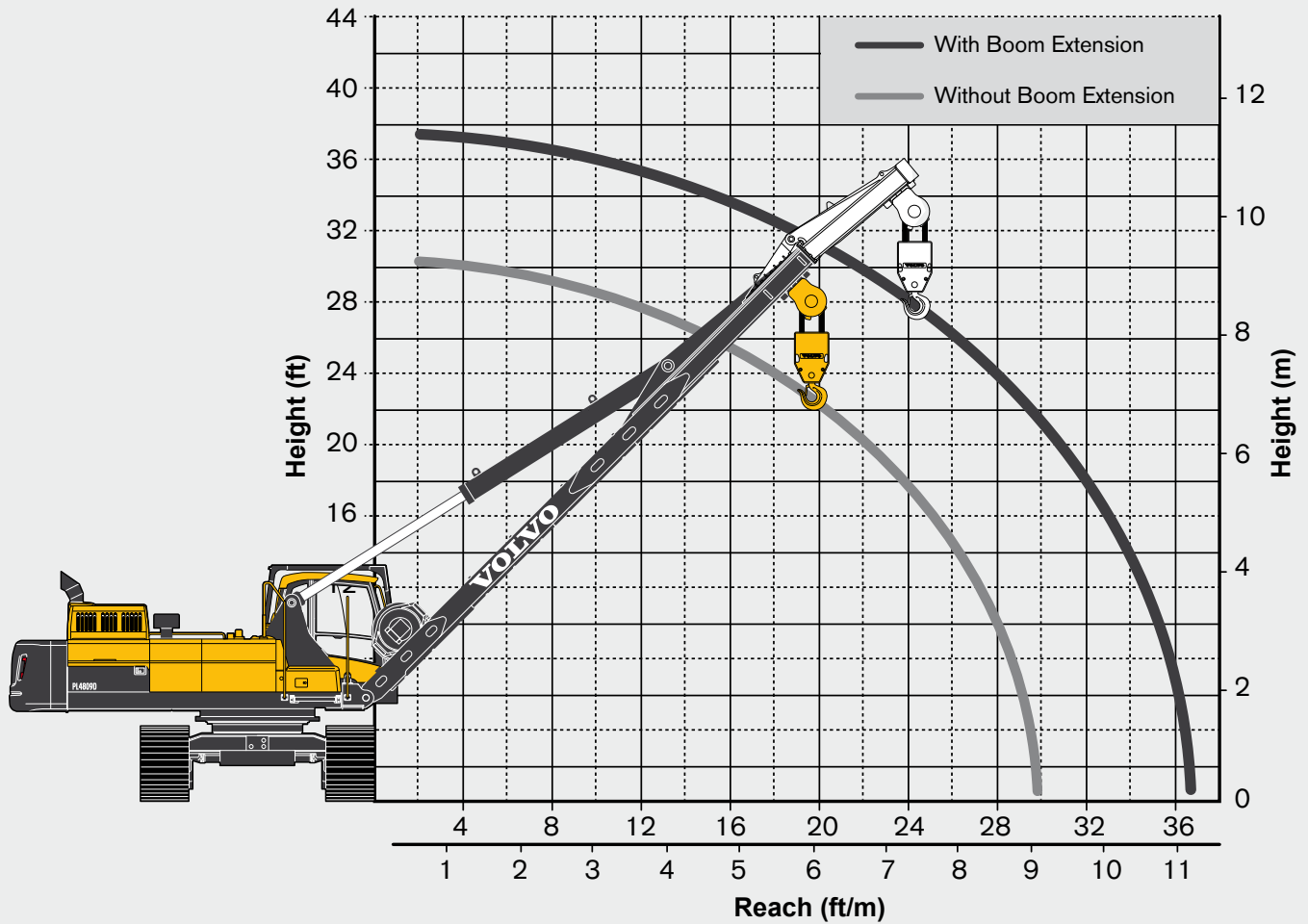
Max tipping capacity per ISO 8813, SAE J743, and ASME B30.14. Rated capacity per ISO 8813 and ASME B30.14, lift capacity valid through 360 degree rotation

Boom length	m	7.3	ft in	24'
Rear counterweight	kg	6 800	lb	14,990
Track frame counterweights	kg	--	lb	--
Wire rope	mm	16	ft in	5/8"
with minimum breaking strength of	kg	20 600	lb	45,400
Reeving on load block	Parts	6	Parts	6



# SPECIFICATIONS.

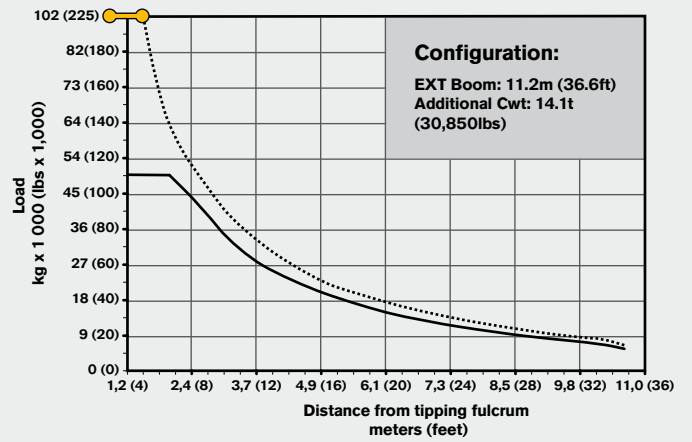
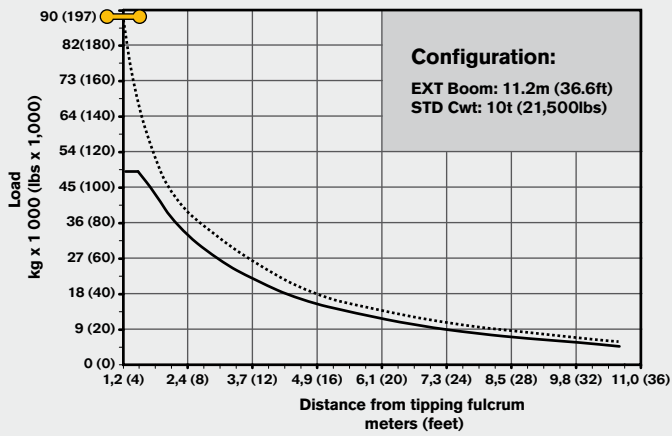
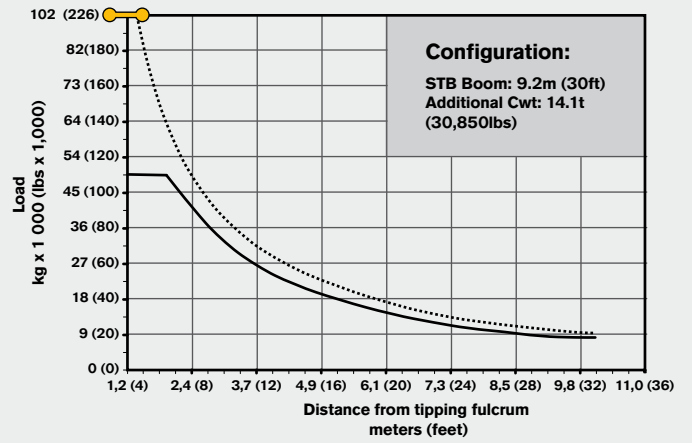
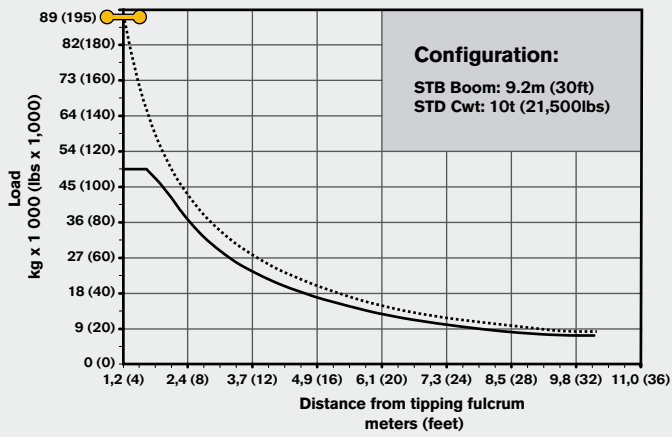
## WORKING RANGE / LOAD CHARTS WITH STANDARD CONFIGURATION PL4809D



### Footnotes PL4809D

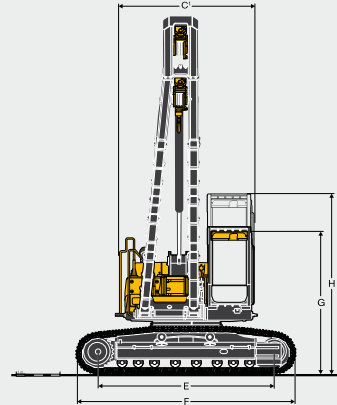
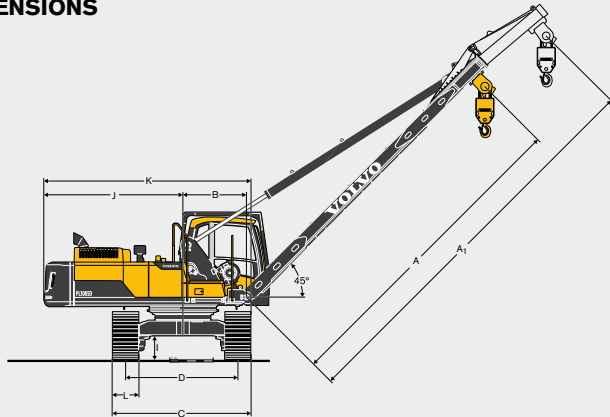
Max tipping capacity per ISO 8813, SAE J743, and ASME B30.14. Rated capacity per ISO 8813 and ASME B30.14, lift capacity valid through 360 degree rotation

Boom length	m	9.2	ft in	30' 2"
Rear counterweight	kg	8 900	lb	19,620
Track frame counterweights	kg	2 X 945	lb	2 X 2,083
Wire rope	mm	22.2	ft in	7/8"
with minimum breaking strength of	kg	36 000	lb	79,400
Reeving on load block	Parts	6	Parts	6



# SPECIFICATIONS.

## DIMENSIONS



		PL3005D				PL4809D			
A	Boom length	mm	7 320	ft in	24'0"	mm	9 236	ft in	30'4"
A <sub>1</sub>	Boom length (boom extension)	mm	9 150	ft in	30'0"	mm	11 229	ft in	36'10"
B	Swing center - boom mount pin	mm	1 470	ft in	4'10"	mm	1 680	ft in	5'6"
C	Overall width *with 600mm/ 24" shoes	mm	3 190	ft in	10'6"				
	Overall width (PL4809D extended)					mm	3 640	ft in	11'11"
	Overall width (PL4809D retracted)					mm	3 140	ft in	10'4"
	Overall width (PL4809D extended, side counterweight)					mm	3 731	ft in	12'3"
C <sub>1</sub>	Overall width upper structure	mm	2 890	ft in	9'6"	mm	2 990	ft in	9'10"
D	Track gauge (PL4809D Extended)	mm	2 590	ft in	8'6"	mm	2 890	ft in	9'6"
E	Tumbler length	mm	3 970	ft in	13'	mm	4 370	ft in	14'4"
F	Track length	mm	4 950	ft in	16'3"	mm	5 377	ft in	17'8"
G	Overall height, Cab in lower position	mm	3 280	ft in	10'9"	mm	3 540	ft in	11'7"
	Overall height, Cab in lower position with ROPS	mm	3 390	ft in	11'1"	mm	3 645	ft in	12'0"
H	Overall height, Cab in upper position	mm	3 770	ft in	12'4"	mm	4 035	ft in	13'3"
	Overall height, Cab in upper position with ROPS	mm	3 880	ft in	12'9"	mm	4 141	ft in	13'7"
I	Minimum ground clearance	mm	545	ft in	1'9"	mm	555	ft in	1'10"
J	Tail swing radius	mm	3 200	ft in	10'6"	mm	3 882	in	12'9"
K	Maximum base machine width, across undercarriage	mm	4 795	ft in	15'7"	mm	5 702	in	18'8"
L	Track shoe	mm	600	in	24"	mm	700	in	28"
L <sub>1</sub>	Track shoe	mm	750	in	30"	mm	750	in	30"
L <sub>2</sub>	Track shoe	mm	800	in	32"	mm	900	in	36"
L <sub>3</sub>	Track shoe					mm	1 050	in	42"

### Operating weight and ground pressure

	Track shoe width		with standard boom		Ground pressure		Track shoe width		2m (6') Boom extension		Ground pressure	
	mm	in	kg	lb	kPa	psi	mm	in	kg	lb	kPa	psi
<b>PL3005D*</b>												
	600		35 330	77,890	66.8	9.7	600	24"	36 340	80,115	68.7	10.0
	750		36 015	79,400	54.4	7.9	750	30"	37 020	81,615	56.0	8.1
	800		36 240	79,895	51.4	7.4	800	32"	37 245	82,110	52.8	7.7
<b>PL3005D</b>												
	600	24"	35 110	77,405	65.2	9.5	600	24"	36 135	79,665	67.1	9.7
	750	30"	35 765	78,850	53.2	7.7	750	30"	36 790	81,110	54.6	7.9
	800	32"	35 880	79,105	50.3	7.3	800	32"	36 905	81,365	51.7	7.5
<b>PL4809D</b>												
									with extra counterweight			
	700	28"	58 160	128 220	85.3	12.4	700	28"	62 980	138 840	92.2	13.4
	750	30"	58 200	128 310	79.4	11.5	750	30"	63 020	138 935	86.3	12.5
	900	36"	58 965	129 995	67.7	9.8	900	36"	63 780	140 610	72.6	10.5
	1 050	42"	59 725	131 670	58.8	8.5	1 050	42"	64 540	142 285	62.8	9.1

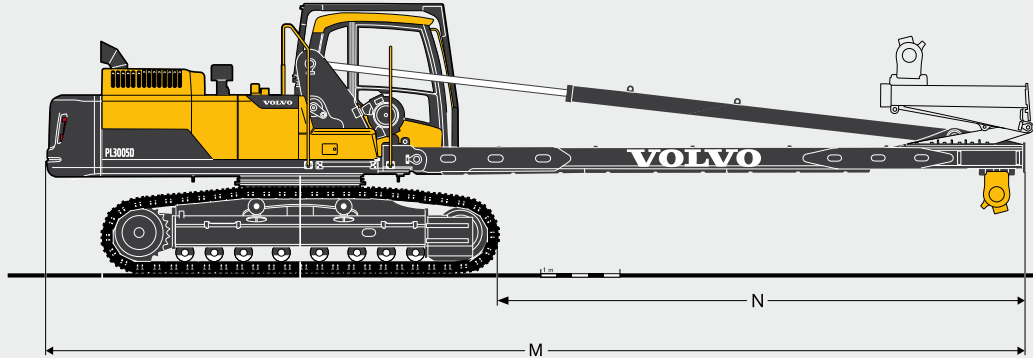
### Other weights

	PL3005D				PL4809D			
1. Boom structure incl. flag block	kg	2 575	lb	5,675	kg	7 535	lb	19,750
2. Boom structure incl winch* + flag block	kg	580	lb	1,280	kg	1 425	lb	3,140
3. Adapter between base machine - boom, incl winch	kg	2 250	lb	4,965				
4. Hook block	kg	260	lb	575	kg	520	lb	1,145
5. Counterweight	kg	6 800	lb	14,990	kg	8 900	lb	19,620
6. Boom extension	kg	860	lb	1,895	kg	1 735	lb	3,240
7. Extra counterweight	kg				kg	4 100	lb	9,040
Base machine (complete machine minus 1-5)	kg	22 645	lb	49,920	kg	34 500	lb	76,060

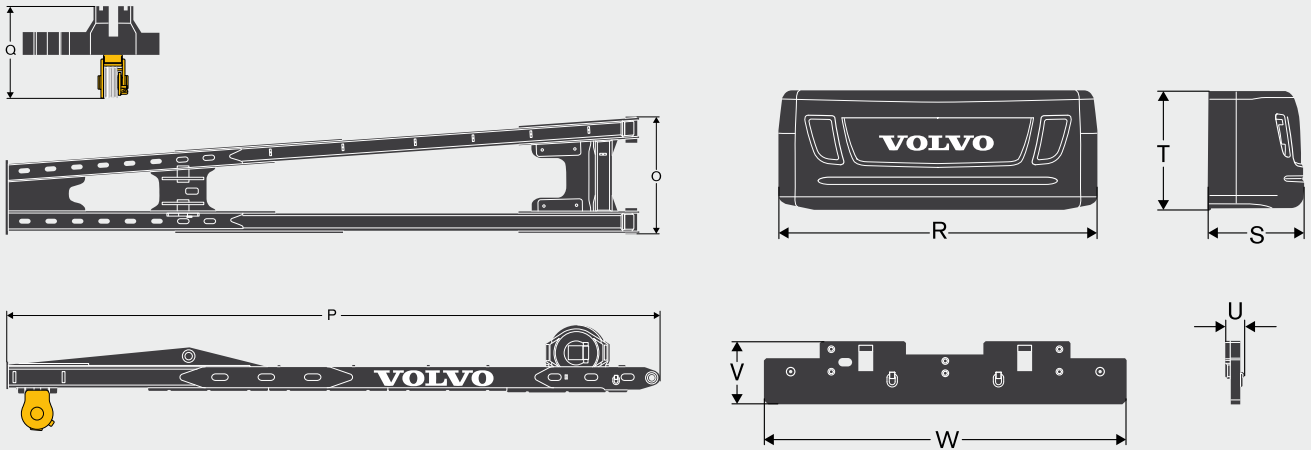
\* Excludes North America and EU countries.



## DIMENSIONS BASE MACHINE



## DIMENSIONS COMPONENT MODULES



### Overall transport width

#### PL3005D

Track shoe width				Machine width			
mm	600	in	24"	mm	3 190	in	10'8"
mm	750	in	30"	mm	3 340	in	10'11"
mm	800	in	32"	mm	3 390	in	11'1"

#### PL4809D

Track shoe width				retracted				extended			
mm	700	in	28"	mm	3 090	ft in	10'2"	mm	3 590	ft in	11'9"
mm	750	in	30"	mm	3 140	ft in	10'4"	mm	3 640	ft in	11'11"
mm	900	in	36"	mm	3 290	ft in	10'10"	mm	3 790	ft in	12'5"
mm	1 050	in	42"					mm	3 940	ft in	12'11"

### Dimensions

Dimensions	PL3005D		PL4809D	
	mm	ft in	mm	ft in
M Total transport length	12 340	40'6"	15 260	50'1"
Total transport length (boom extension)	14 210	46'7"	17 250	56'7"
N Undercarriage-boom top end	6 670	21'11"	8 700	28'6"
O Boom width (boom mounting)	1 420	4'8"	1 795	5'11"
P Total boom length	7 780	25'6"	9 820	32'3"
Q Complete boom height	590	1'11"	1 370	4'6"
R Width rear counterweight			2 990	9'10"
S Length rear counterweight			920	3'0"
T Height rear counterweight			1 150	3'9"
U Track frame counterweight			180	7"
V Height track frame counterweight			590	1'11"
W Length track frame counterweight			3 325	10'10"

# EQUIPMENT.

## STANDARD EQUIPMENT

	PL3005D	PL4809D
* Excludes North America and EU countries.		
<b>Engine</b>		
Turbocharged, 4 stroke diesel engine with water cooling, direct injection and charged air cooler (that meets Tier 3 / Stage IIIA requirements)	•	•
(that meets Tier 4i EU / Stage IIIB requirements)	•	•
Air filter with indicator	•	•
Air intake heater	•	•
Electric engine shut-off	•	•
Fuel filter and water separator	•	•
Cyclone pre-cleaner	•	•
Alternator, 80 A	•	•
<b>Electric/Electronic control system</b>		
Anti-two block device	•	•
Contronics:		
Advanced mode control system	•	•
Self-diagnostic system	•	•
ECO mode fuel saving technology	•	•
CareTrack	•	•
3year-Caretrack subscription	•	•
Machine status indication	•	•
Engine speed sensing power control	•	•
Automatic idling system	•	•
One-touch power boost	•	•
Safety stop/start function	•	•
Load management system (LMS)	•	•
Adjustable LCD color monitor	•	•
Master electrical disconnect switch	•	•
Engine restart prevention circuit	•	•
High-capacity halogen lights:	•	•
Travel alarm	•	•
Batteries, 2 x 12 V / 200 Ah	•	•
Start motor, 24 V / 5,5 kW (PL3005D)	•	•
Start motor, 24 V / 7 kW (PL4809D)		•
<b>Hydraulic system</b>		
Hydraulic digging kit in base machine	•	•
Separate and combined pump flow switch	•	•
360 degree slew with hydro-mechanical slew lock system	•	•
Swing anti-rebound valves	•	•
Multi-stage filtering system	•	•
Boom cylinder	•	•
Cylinder contamination seals	•	•
Auxiliary hydraulic valve	•	•
Automatic two-speed travel motors	•	•
User Adjustable Variable speed travel motors	•	•
Long life hydraulic oil, ISO VG 46	•	•
<b>Superstructure</b>		
Access way with handrail	•	•
Counterweight 6 800 kg, 14,990 lb	•	•
Hydraulically removable counterweight 8 900 kg, 19,621lb		•
Tool storage area	•	•
Service walkway with anti-slip grating	•	•
Undercover (4.5 mm)	•	•

## Cab and interior

4 Bar cab riser	•	•
Fabric seat with heater	•	•
Control joysticks with 4 switches each	•	•
Travel pedals with hand levers	•	•
Straight travel pedal	•	•
Heater & air-conditioner, automatic	•	•
Adjustable operator seat and joystick control console	•	•
Switchable winch control joystick	•	•
Hydraulic safety lock lever	•	•
AM/FM stereo with CD player and MP3 input: includes antenna in glass	•	•
Cab, all-weather sound suppressed, includes:	•	•
Cup holders	•	•
Door locks	•	•
Floor mat	•	•
Horn	•	•
Large storage area	•	•
Pull-up type front window	•	•
Removable lower windshield	•	•
Seat belt 3"	•	•
Safety glass, light tinted	•	•
Windshield wipers with washer and intermittent feature (Front and right hand side)	•	•
Anti-vandalism kit assembly preparation	•	•
Master key	•	•
Fixed hatch	•	•
Rear and side view camera	•	•
Four-bar cab riser-mounted, ROPS certified (ISO 3471 & EN474-1), factory installation only 4 bar cab riser-mounted	•	•
<b>Undercarriage</b>		
Hydraulic track adjusters	•	•
Greased and sealed track link	•	•
Retractable track frame	•	•
Full track guard	•	•
Undercover (10 mm)	•	•
Pulling eyes	•	•
Track frame counterweights 2 x 945kg (2 X 2,083 lb)	•	•
<b>Track shoes</b>		
600mm, 24" Track shoes, single grousers	•	•
750mm, 30" Track shoes, single grousers	•	•
<b>PL booms</b>		
Prepared for boom extension	•	•
7.3m, 24'	•	•
9.2m, 30'	•	•
Winch	•	•
Flag block	•	•
Hook block	•	•
Wire rope, D16	•	•
Wire rope, D22	•	•
<b>Service</b>		
Tool kit, daily maintenance	•	•

## OPTIONAL EQUIPMENT

	PL3005D*	PL3005D	PL4809D
* Excludes North America and EU countries.			
<b>Engine</b>			
Block heater: 240V	•		
120V, 240V		•	•
Diesel coolant heater, 10 kW, programmable	•	•	•
Water separator with heater	•	•	•
Extra water separator	•		
Fuel filler pump: 35 l/min, with automatic shut-off	•		
50 l/min, with automatic shut-off		•	•
Oil bath pre-cleaner	•	•	•
<b>Electric</b>			
Extra lamps:	•	•	•
Cab-mounted 2	•	•	•
Upper structure-mounted 1	•	•	•
Boom lights for PL Boom	•	•	•
Anti-theft, code lock system	•	•	•
Rotating warning beacon	•	•	•
<b>Hydraulic system</b>			
Hydraulic piping for			
Hammer & shear 2 pump flow & Slope & rotator & Quick coupler	•	•	
Hammer & shear 2 pump flow (max. flow 716lpm, double acting pressure 360kgf/cm <sup>2</sup> )			•
Long life hydraulic oil, ISO VG 32	•	•	•
Long life hydraulic oil, ISO VG 68	•	•	•
Hydraulic oil, biodegradable 46	•	•	•
<b>Superstructure</b>			
Manual removable counterweight, 13 000kg, 28,660lb (incl. additional counterweight) (PL4809D)			•
<b>Cab and interior</b>			
Fabric seat with heater and mech. Suspension	•	•	•
Fabric seat with heater and air suspension	•	•	•
Control joystick with proportional control	•	•	•
Ashtray and lighter	•	•	•
Sun shield	•	•	•
Rain shield	•	•	•
<b>Track shoes</b>			
Single grousers:			
750mm, 30"	•	•	
900mm, 36"			•
1050mm, 42"			•
Triple grousers:			
700mm, 28"			•
800mm, 32"	•	•	
900mm, 36"			•
<b>PL Boom</b>			
Boom extension: 1,8m, 6'	•	•	
Boom extension: 2m, 6.5'			•
Boom pad	•	•	•
<b>Digging equipment</b>			
Digging kit :			
Boom 6,2m, 20'4", arm 3,05m , 10' with aux hydraulic (Hose rupture valve, hammer & shear piping, quick coupler piping, slope rotator piping)	•	•	
Boom 7,0m, 23', arm 3,35m, 11' with aux hydraulic (Hose rupture valve, hammer & shear piping)			•
<b>Others</b>			
Siberian option package for digging equipment	•		
Siberian option package for pipelayer	•		

Standard and optional equipment may vary by market. Please consult your local Volvo dealer for details.

## SELECTION OF VOLVO OPTIONAL EQUIPMENT



# VOLVO CONSTRUCTION EQUIPMENT

Volvo Construction Equipment is different. Our machines are designed, built and supported in a different way. That difference comes from an engineering heritage of over 180 years. A heritage of thinking first about the people who actually use the machines. About how to help them be safer, more comfortable, more productive. About the environment we all share. The result of that thinking is a growing range of machines and a global support network dedicated to helping you do more. People around the world are proud to use Volvo.

Not all products are available in all markets. Under our policy of continuous improvement, we reserve the right to change specifications and design without prior notice. The illustrations do not necessarily show the standard version of the machine.

# **VOLVO**

**Volvo Construction Equipment**  
**[www.volvoce.com](http://www.volvoce.com)**

Ref. No 20037506-A  
2013.09  
Volvo, Global Marketing

English-22  
PIP