

Volvo Construction Equipment  
Building Tomorrow



# EW205D

Volvo Excavators 19.8-21.8 t 176 hp



A construction site at sunset. In the foreground, a Volvo excavator is silhouetted against the bright orange and yellow sky. In the background, several construction cranes are visible against the sky, and a building under construction is partially visible. The overall scene is hazy and atmospheric.

# WELCOME TO OUR WORLD

Welcome to a world of industry leading machinery. A world where imagination, hard work and technological innovation will lead the way towards developing a future which is cleaner, smarter, and more connected. A world supported by the enduring values of the Volvo Group. A world of stability, sustainability and innovation. A world which we put our customers at the heart of.

Welcome to the world of Volvo Construction Equipment – we think you're going to like it here.

## Working harder, working smarter

For over 180 years Volvo has been a pioneer in the design and manufacture of machines which set the standard for efficiency, performance and uptime. Across our range of excavators, wheel loaders and haulers, our reputation for engineering excellence is unrivalled, which means whatever your operation or application, we can provide a total fleet solution to help you succeed.

Building on our proud history, the Volvo Concept Lab continues to create cutting-edge ideas and innovative concepts, to ensure we offer customers machines which work harder and smarter long into the future.



## Solutions for you

Our industry leading machines are just the start of your relationship with Volvo. As your partner, we have developed an extensive range of additional solutions to help you improve uptime, boost productivity and reduce costs.

### Designed for your business

Structured across nine blocks, our portfolio of products and services are designed to complement your machine's performance and boost your profitability. Simply put, we offer some of the best guarantees, warranties and technological solutions in the industry today.

### There when you need us

Whether you're buying new or used, our global network of dealers and technicians offer around-the-clock support, including machine monitoring and world-class parts availability. It's the basis of everything offered by Volvo Services, so you can be confident we've got you covered right from the start.

**BUILDING TOMORROW**





#### ECO mode



Volvo's unique ECO mode optimizes the hydraulic system to reduce flow and pressure losses – resulting in improved fuel efficiency without any loss of performance in most operating conditions. ECO mode is automatically selected but can be switched off via the keypad.

# Unrivalled fuel efficiency.

Introducing the EW205D from Volvo – a new 20 ton wheeled excavator designed to drive your efficiency up. With advanced technology including Volvo’s unique ECO mode and a powerful Volvo engine, this superior digging and mobile tool carrying machine works with ultimate efficiency both off and on-road.

## Volvo engine

Featuring proven, advanced technology and built on decades of experience, the Volvo D6 engine delivers the ultimate combination of low fuel consumption and high productivity. Benefit from superior performance, reliability and durability.

## Work modes

Volvo’s unique, integrated work mode system optimizes fuel efficiency and machine performance. The operator can choose the best work mode for the task at hand – select from I (Idle), F (Fine), G (General), H (Heavy) and P (Power max).



## Automatic idling system

Engine speed is reduced to idle when the controls are inactive for a pre-set amount of time (between 3 and 20 seconds). This reduces fuel consumption and noise.

## Auto engine shut down

To reduce fuel consumption, the engine will automatically switch off when the machine is inactive for a pre-set amount of time (five minutes is the default setting).

## Optimized piping

The large diameter of the hydraulic piping on the boom and arm reduces pressure losses and improves fuel efficiency.



# Command and control.

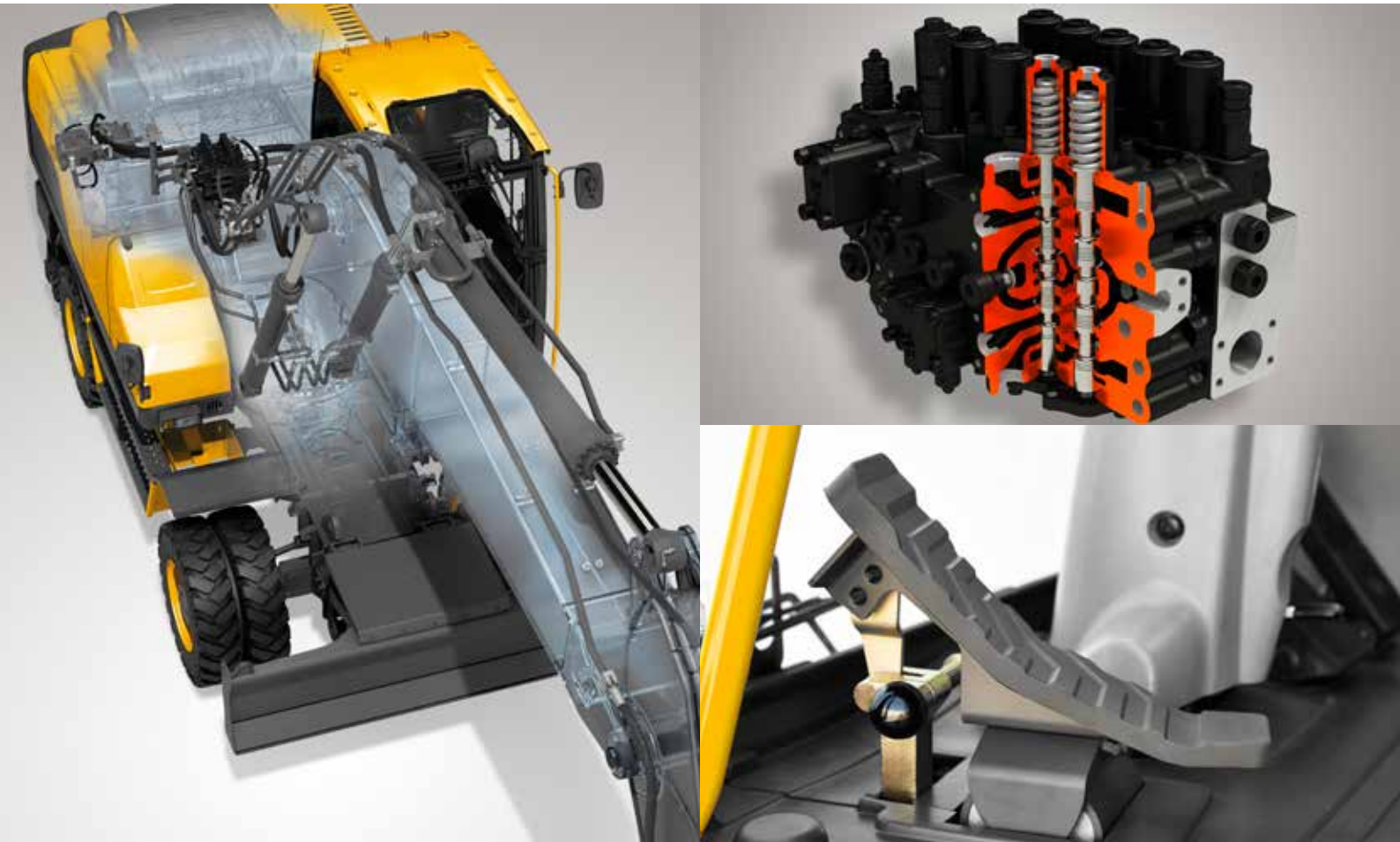
If you're looking for superior controllability and smooth and responsive movements then look no further than the EW205D. Featuring advanced hydraulics and an electronic flow-dividing control system, this excavator delivers an outstanding performance in both single and combined operations.

## Electronic flow-dividing control system

The Proportional Pressure Reducing Valve (PPRV) ensures the right amount of flow is delivered to each operation. This results in optimized control – delivering smooth and responsive movements during combined operations.

## Main control valve

The newly developed main control valve is designed to reduce internal pressure losses and enhance the efficiency of the hydraulic system.



## Breaker and shear pedal

The electronically-controlled breaker and shear foot pedal delivers superior control and ease of operation.





#### Advanced hydraulics

The full electro-hydraulic system and main control valve use intelligent technology to control on-demand flow and reduce internal losses in the hydraulic circuit. This provides increased control, shorter cycle times and improved fuel efficiency.





#### **Stable undercarriage**

The well-balanced undercarriage is made from strong steel for maximum durability when operating in rough terrain as well as ultimate stability when lifting heavy loads.



# Stability you can rely on.

Whether you're working in the road construction, utilities, landscaping or any other application, the EW205D has been built to handle tough terrain and work on a variety of jobsites. With a strong undercarriage and a rigid main frame, this well-balanced and durable excavator boasts superior stability.

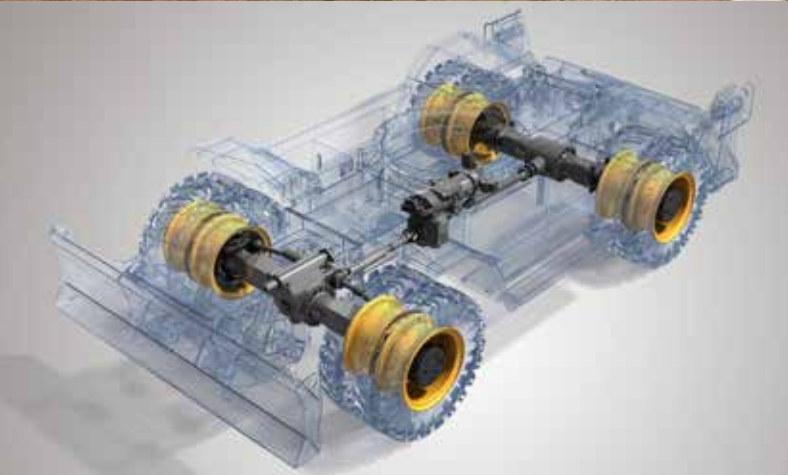
## Axle lock

For superior ground contact when traveling and operating on a slope or uneven terrain, the front axle oscillates. To keep the machine level and secure stability, the axle lock function can be both manually and automatically activated.



## Rigid main frame

The strong structure easily absorbs impacts transferred through the digging equipment. Reinforced welding between the center and side frames, and the boom and boom cylinder mounts, increases durability.



## Well-balanced driveline

The ideally-matched, Volvo driveline has been built to work in perfect harmony. The durable Volvo design delivers excellent control for smooth travel, superior performance and high productivity.

## Dozer blade and outriggers

A robust dozer blade and outriggers optimize machine stability and increase versatility – enabling the excavator to carry out a variety of tasks including lifting, loading and grading.

# Comfort counts.

When you have a long day ahead of you it's important to know you'll be working in comfort. That's why Volvo has developed a spacious and comfortable operating environment with ergonomic controls, all-around visibility and vibration protection. Experience new levels of comfort and get the job done with Volvo.

## I-ECU monitor

The color, seven inch LCD monitor displays machine status information including fuel consumption data and service interval alerts – enabling increased uptime and high productivity. The user-friendly design is easy to read in all light conditions.

## Volvo seat

The fully adjustable seat has been designed to enhance operator comfort during long work shifts. An optional air suspension and heated seat are available for ultimate comfort.



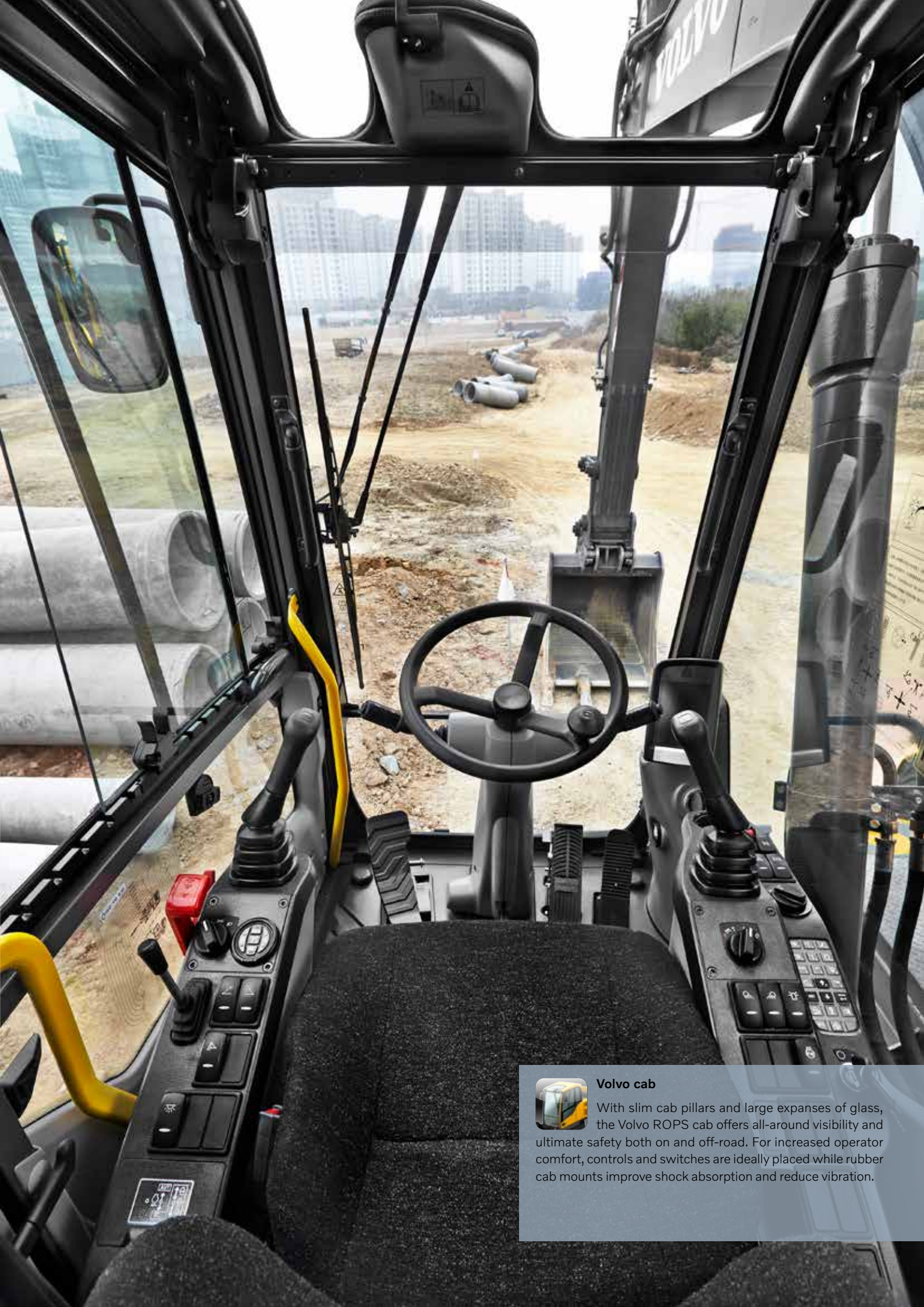
## Adjustable steering column

The slim design of the easily adjustable steering column enables easy entry to the cab while also ensuring visibility is not impaired. The angle of the steering column is changed by simply pushing a pedal.

## Climate control

Volvo's powerful, industry-leading climate control system provides superior operator comfort. The air circulation and defrosting system features 14 well-spaced vents which quickly heat or cool the cab.





#### Volvo cab

With slim cab pillars and large expanses of glass, the Volvo ROPS cab offers all-around visibility and ultimate safety both on and off-road. For increased operator comfort, controls and switches are ideally placed while rubber cab mounts improve shock absorption and reduce vibration.





**Easy service access**

Rear access behind the cab, along with sturdy steps and handrails, provides safe and easy maintenance access to the superstructure. Centralized greasing points permit regular checks to be done faster for maximum machine uptime.



# Access more uptime.

Even a Volvo machine requires service and maintenance in order to work as efficiently and productively as possible. But the difference is that Volvo makes maintenance easy – giving you more uptime. With grouped service points and safe and easy access to components, you'll get the most out of each working day.

## Large toolbox

For easy daily maintenance and increased uptime, a spacious toolbox is located between the steps on the left side of the machine.



## Single layer cooling system

The radiator, charged air cooler and hydraulic oil cooler are integrated in a single layer to maximize efficiency, reduce blockages and aid cleaning. The system is easily accessed by opening the side door.



## Service interval display

For easy maintenance and increased machine uptime, four service interval alerts on the monitor inform the operator when maintenance is required.



## Grouped filters

Grouped filters are quick and easy to access from ground level for fast servicing.

# The machine that does more.

## Intelligent flow-dividing control system

The Proportional Pressure Reducing Valve (PPRV) ensures the right amount of flow is delivered to each operation.

## Serviceability

Grouped filters and centralized greasing points permit regular checks to be done faster for maximum machine uptime.



## Advanced hydraulics

The full electro-hydraulic system and main control valve use intelligent technology to control on-demand flow for high performance and efficiency.

## Quick couplers

Volvo quick couplers are designed to work with Volvo attachments, delivering ultimate compatibility and unrivalled performance.



## Attachment range

Volvo's comprehensive range of attachments have been purpose-built to work in perfect harmony with Volvo machines.





### I-ECU monitor

The LCD monitor clearly displays machine status information for easy operation and increased productivity.



### Volvo cab

All-around visibility and an ergonomic design are at the center of Volvo's operator environment – increasing comfort and ease of operation.



### Easy service access

Rear access behind the cab along with sturdy steps and handrails provide safe and easy maintenance access to the superstructure.

### Volvo engine

The Volvo D6 engine delivers the ultimate combination of low fuel consumption and high productivity.

### Rigid main frame

The strong structure easily absorbs impacts transferred through the digging equipment.

### Blade and outriggers

A robust dozer blade and outriggers optimize machine stability and increase versatility.



### ECO mode

Volvo's unique ECO mode improves fuel efficiency without any loss of performance in most operating conditions.



### Stable undercarriage

The well-balanced undercarriage is made from strong steel for maximum durability and stability.





#### **Attachment range**

Volvo's durable attachments have been purpose-built to work in perfect harmony with Volvo machines, forming one solid, reliable unit. The comprehensive range includes ditching buckets, hydraulic breakers and general purpose buckets. Experience maximum productivity with the right attachment for your specific requirements.



# Infinite opportunities.

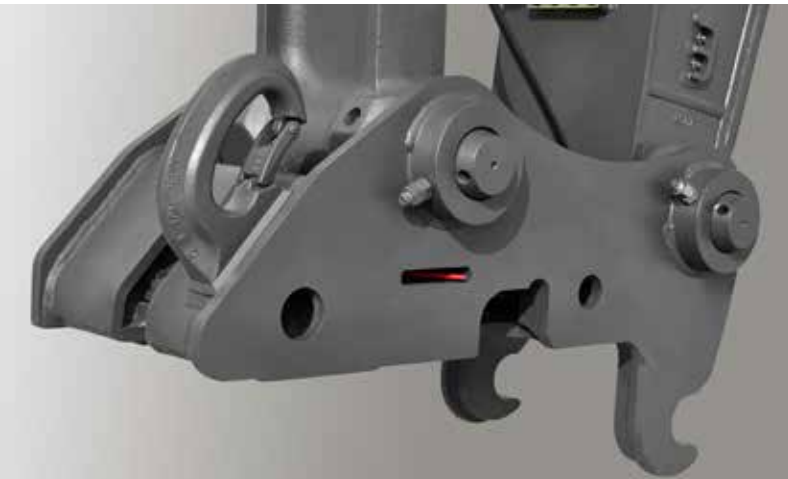
Maximize your productivity and profitability with the versatile EW205D and Volvo's comprehensive, durable range of attachments. Increase your versatility, access more applications and effectively perform a variety of tasks – all while experiencing faster cycle times and excellent control. Get the most out of your excavator with Volvo.

## Quick couplers

Volvo quick couplers are designed to work with Volvo attachments, delivering ultimate compatibility and unrivalled performance.

## Optional auxiliary hydraulics

Factory fitted breaker and shear piping as well as tilt and rotator piping increase versatility by enabling a wide range of additional attachments to be used.



## Hydraulic breakers

Volvo's durable hydraulic breakers have been designed for ultimate compatibility with Volvo excavators. The range has been built to break the most demanding materials and combines excellent performance with low noise and vibration levels.

## Attachment management system (AMS)

The AMS stores the settings for up to 20 hydraulic attachments. The system allows hydraulic flow adjustments to be accurately and easily set according to the needs of the tool being used.

# Adding value to your business.

Being a Volvo customer means having a complete set of services at your fingertips. Volvo can offer you a long-term partnership, protect your revenue and provide a full range of customer solutions using high quality parts, delivered by passionate people. Volvo is committed to increasing the positive return on your investment and maximising uptime.



## Complete Solutions

Volvo has the right solution for you. So why not let us provide all your needs throughout the whole life cycle of

your machine? By listening to your requirements, we can reduce your total cost of ownership and increase your revenue.



## Genuine Volvo Parts

Our attention to detail is what makes us stand out. This proven concept acts as a solid investment in your machine's future. Parts are extensively tested and approved because every part is vital for uptime and performance. Only by using Genuine Volvo Parts, can you be sure that your machine retains the renowned Volvo quality.



## Service Network

In order to respond to your needs faster, a Volvo expert is on their way to your job site from one of our Volvo facilities. With our extensive infrastructure of technicians, workshops and dealers, Volvo has a comprehensive network to fully support you using local knowledge and global experience.





### SERVICE PLAN

DAY01	DAY02	DAY03	DAY04	DAY05	DAY06	DAY07
					✓	
	✓		✓	✓		
		✓			✓	✓
✓						
		✓		✓		



 **Customer Support Agreements**

The range of Customer Support Agreements offer preventive maintenance, total repairs and a number of uptime services. Volvo uses the latest technology to monitor machine operation and status, giving you advice to increase your profitability. By having a Customer Support Agreement you are in control of your service costs.

# Specifications.

## EW205D

Operating weight	kg	19 800 - 21 800
Gross power	kW	129.5
... at engine speed	r/min	2 000
Bucket capacity	m <sup>3</sup>	0.42 - 1.1
Max lifting capacity	kg	6 500
... at reach / height	m	6.0 / 1.5
Max. digging reach	mm	9 890
Max. digging depth	mm	5 765
Breakout force (ISO) (Normal)	kN	136
Breakout force (ISO) (Boost)	kN	144
Max speed	km/h	36
Tail swing radius	mm	2 800
Based on machine configuration: Boom 5.65 m/18'6"; Dipper arm 2.9m/9'6"; CWT 3 400kg /7,500lb ; Front dozer blade; Rear outriggers		

Not all products are available in all markets. Under our policy of continuous improvement, we reserve the right to change specifications and design without prior notice. The illustrations do not necessarily show the standard version of the machine.



**VOLVO**

**Volvo Construction Equipment**

[volvoce.com](http://volvoce.com)