

V O L V O



Volvo Excavators 91.2-94.8 t 450 kW

EC950

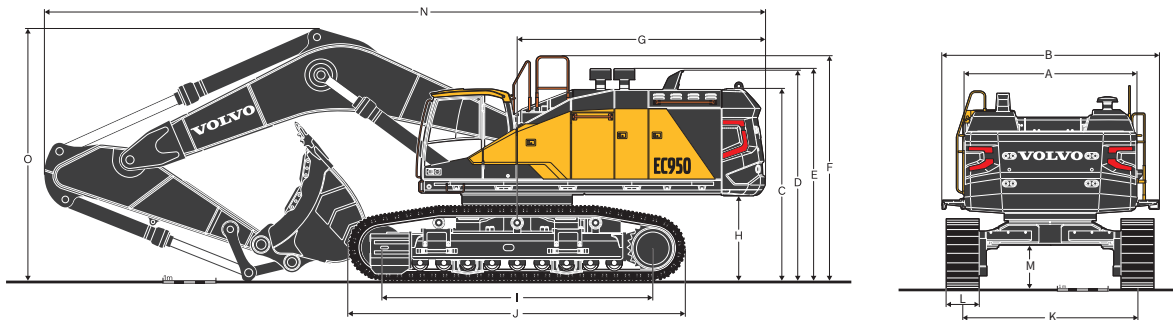
Volvo Construction Equipment

Specifications

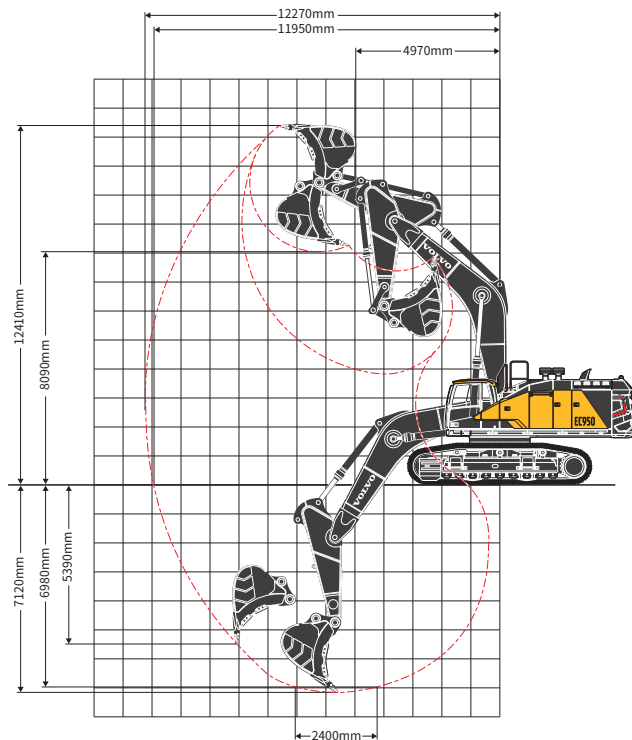
Key features

Engine		
Engine	Volvo	D16J
Max power at	r/min	1 650
Net, ISO 9249/SAE J1349	kW	449
Gross, ISO 14396/SAE J1995	kW	450
Max torque	Nm	2 701
at engine speed	r/min	1 400
Hydraulic system		
Maximum flow	l/min	2 x 515; 1 x 147
Relief Valve setting pressure		
Implement	MPa	34.3
Travel circuit	MPa	34.3
Slew circuit	MPa	28.4
Travel System		
Max. drawbar pull	kN	565
Max. travel speed (low/high)	km/h	2.8/4.4
Gradeability	°	33
Swing system		
Max. slew speed	r/min	6.9
Max. slew torque	kNm	343

Service Refill		
Fuel tank	l	1 265
DEF/AdBlue® tank	l	95
Hydraulic system, total	l	890
Hydraulic tank	l	460
Engine oil	l	52
Engine coolant	l	74
Slew reduction unit	l	2 x 6.5
Travel reduction unit	l	2 x 25
Operating weight		
Boom length	m	7.25
Arm length	m	2.95
Bucket size	m³	5.6-7.0
Shoe width	mm	650
Operating weight	Kg	93420
Max.digging force (ISO)		
Breakout force –bucket	kN	478
Tearout force -dipper arm	kN	420



Working Ranges



Description	Unit	EC950
Boom	m	7.25
Arm	m	2.95
A Overall width of superstructure	mm	3 485
B Overall width (walkway)	mm	4 467
C Overall height of cab	mm	3 655
D Overall height of diffuser	mm	3 990
E Overall height of Oil bath	mm	4 180
F Overall height of guardrail	mm	4 263
G Tail swing radius	mm	4 700
H Counterweight clearance *	mm	1 623
I Tumbler length	mm	5 120
J Track length	mm	6 380
K Track gauge(extended)	mm	3 550
Track gauge (retracted)	mm	2 980
L Shoe width	mm	650
M Min. ground clearance *	mm	915
N Overall length	mm	13 615
O Overall height of boom	mm	4 840

* With shoe grouser

V O L V O

Volvo Construction Equipment

沃尔沃建筑设备投资(中国)有限公司

中国上海市浦东新区金京路2095号 邮编:201206

电话:+86 21 3131 9888 传真:+86 21 3131 9666 中文网站:www.volvoce.com.cn

全国统一客服专线: 4000-525-168



微信公众号



沃尔沃APP