

V O L V O



Volvo Excavators 34.8-36.9 t 286 hp

**EC350D**

Volvo Construction Equipment

# EC350D

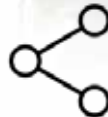


## AMS



The Attachment Management System (AMS) - controlled through the I-ECU - stores settings for up to 20 different hydraulic attachments.

## Robust undercarriage



The strong, three-piece undercarriage and high tensile steel X-shaped frame are built to withstand tough conditions.

## Service access



Grouped filters and greasing points are easy to access from ground level via large, wide compartment doors.

## Customer Support Agreements



Customer Support Agreements offer preventive maintenance, total repairs and a number of uptime services.

# The best machine for the job

## ECO mode



Volvo's unique ECO mode improves fuel efficiency without any loss of performance in most operating conditions.

## Volvo D8 engine



The powerful, new Volvo D8 engine delivers the ultimate combination of high performance and low fuel consumption.

## Work modes



Volvo's unique, integrated work mode system now includes the G4 mode for optimum fuel efficiency and machine performance.

## Volvo cab



Spacious and safe operator environment with all-around visibility, an adjustable seat and easy to access controls.

## Advanced hydraulics



New electro-hydraulic system and main control valve use intelligent technology to control on-demand flow for high performance and efficiency.

## Boom float



Reduce cycle time and improve control in grading operations by using gravitational force to 'float' the boom over the ground.

## I-ECU



The new, color LCD monitor clearly displays machine status information for easy operation and increased productivity.

## Strong structure



Strong and durable structure with a reinforced boom and arm allow the machine to work in the most severe, heavy-duty applications.

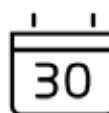
## Climate control system\*



Industry-leading air circulation and defrosting system with 14 well-spaced vents for increased operator comfort and productivity.

\*Optional in certain markets

## Extra water separator\*



An additional water separator further prevents water and impurities from entering the engine – providing extended engine lifetime, extra durability and reliability.

\*Optional in certain markets



# Volvo EC350D in detail

## Engine

The in-line six cylinder water cooled diesel engine, which provide excellent performance, is equipped with EMS 2.2 electronic controlled, high pressure fuel injectors, cooled external EGR\*, turbo charger with waste gate, air-to-air intercooler. (\*for certain regions)

Engine	Volvo	D8F/D8K*
Max power at	r/min	1 800
Net, ISO 9249/SAE J1349	kW	197
	hp	268
Gross, ISO 14396/SAE J1995	kW	210
	hp	286
Max torque	Nm	1 340
at engine speed	r/min	1 350
No. of cylinders		6
Displacement	l	7.8
Bore	mm	110
Stroke	mm	138

## Electrical System

Well protected high-capacity electrical system. Waterproof double-lock connectors are used to ensure corrosion-free connection. Main relays and fuses are located in a shielded electrical distribution box. The master switch is standard. Advanced monitoring of machine functions and important diagnostic information are displayed on the I-ECU.

Voltage	V	24
Batteries	V	2 x 12
Battery capacity	Ah	200
Alternator	V/A	28/110
Start motor	V - kW	24 - 5.5

## Swing system

The swing system uses an axial piston motor, driving a planetary gearbox for maximum torque. Automatic holding brake and antirebound valve are standard.

Max. slew speed	r/min	10.3
Max. slew torque	kNm	126

## Travel System

Each track is powered by an automatic two-speed shift travel motor. The track brakes are multi-disc, spring-applied and hydraulic released. The travel motor, brake and planetary gears are well protected within the track frame.

Max. drawbar pull	kN	261
Max. travel speed (low)	km/h	3.3
Max. travel speed (high)	km/h	5.1
Gradeability	°	35

## Undercarriage and structures

Robust X-shaped frame with greased and sealed track chains.

EC350D	
Track shoe	2 x 45
Link pitch	mm 215.9
Shoe width, triple grouser	mm 600/700/800
Shoe width, double grouser	mm 600
Bottom rollers	2 x 7
Top rollers	2 x 2

EC350DL	
Track shoe	2 x 48
Link pitch	mm 215.9
Shoe width, triple grouser	mm 600/700/800
Shoe width, double grouser	mm 600
Bottom rollers	2 x 8
Top rollers	2 x 2



## Hydraulic system

The new electro-hydraulic system and new MCV (main control valve) use intelligent technology to control on-demand flow for high-productivity, high-digging capacity and excellent fuel consumption. The following important functions are included in the system for optimum performance:

**Summation system:** Combines the flow of both hydraulic pumps to ensure quick cycle times and high productivity.

**Boom priority:** Gives priority to the boom operation for faster raising when loading or performing deep excavations.

**Arm priority:** Gives priority to the arm operation for faster cycle times in leveling and for increased bucket filling when digging.

**Swing priority:** Gives priority to swing functions for faster simultaneous operations.

**Boom, arm and bucket regeneration system:** Prevents cavitation and provides flow to other movements during simultaneous operations for maximum productivity.

**Power boost:** All digging and lifting forces are increased.

**Holding valves:** Boom and arm holding valves prevent the digging equipment from creeping.

### Main pump, Type 2 x variable displacement axial piston pumps

Maximum flow	l/min	2 x 288
--------------	-------	---------

### Pilot pump, Gear pump

Maximum flow	l/min	1 x 18
--------------	-------	--------

### Max. pressure

Implement	MPa	33.3/36.3
Travel circuit	MPa	33.3
Slew circuit	MPa	27.9
Pilot circuit	MPa	3.9

## Hydraulic Cylinders

Mono boom		2
Bore x Stroke	ø x mm	150 x 1 530
Arm		1
Bore x Stroke	ø x mm	170 x 1 700
Bucket		1
Bore x Stroke	ø x mm	140 X 1 285
ME Bucket		1
Bore x Stroke	ø x mm	155 X 1 250

## Service Refill

Fuel tank	l	580
Hydraulic system, total	l	465
Hydraulic tank	l	215
Engine oil	l	32
Engine coolant	l	41
Slew reduction unit	l	6.1
Travel reduction unit	l	2 x 6.8

## Cab

Access to the operator cab is made easy thanks to a wide door opening. The cab is installed on hydraulic dampening mounts to reduce shocks and vibration levels. These, along with sound absorbing lining, provide low noise levels. The cab has excellent allround visibility. The front windshield easily slide up into the ceiling. The lower front glass can be removed and stored in the side door.

**Integrated air-conditioning and heating system:** The pressurized and filtered cab air is supplied by an automatically controlled fan. The air is distributed throughout the cab from 14 vents.

**Ergonomic operator's seat:** The adjustable seat and joystick console move independently to accommodate the operator. The seat features multiple adjustments and a seat belt for the operator's comfort and safety. ROPS Cab is available as an option to comply with ISO 12117-2 standards.

## Sound Level

Sound level in cab according to ISO 6396		
L <sub>pA</sub>	dB	73
External sound level according to ISO 6395 and EU Noise Directive (2000/14/EC) and 474-1:2006 +A1:2009		
L <sub>WA</sub>	dB	106



# Specifications

## MACHINE WEIGHTS AND GROUND PRESSURE

6.45m boom 2.6m arm 1 644kg bucket 7 000kg counterweight					6.45m boom 2.6m arm 1 644kg bucket 7 250kg counterweight			
Description	Shoe width	Operating weight	Ground pressure	Overall width	Shoe width	Operating weight	Ground pressure	Overall width
	mm	kg	kPa	mm	mm	kg	kPa	mm
Triple grouser	600	34 800	72.0	3 190	600	35 050	72.6	3 190
	700	35 300	58.4	3 290	700	35 550	58.8	3 290
	800	35 700	51.7	3 390	800	35 950	52.0	3 390
Double grouser	600	35 400	68.3	3 190	600	35 650	68.8	3 190

6.45m boom 3.2m arm 1 644kg bucket 7 000kg counterweight				
Description	Shoe width	Operating weight	Ground pressure	Overall width
	mm	kg	kPa	mm
Triple grouser	600	34 850	72.1	3 190
	700	35 400	58.5	3 290
	800	35 750	51.7	3 390
Double grouser	600	35 450	68.4	3 190

6.2m boom 2.6m arm 1 880kg bucket 7 250kg counterweight					6.45m boom 2.6m arm 1 644kg bucket 7 000kg counterweight			
Description	Shoe width	Operating weight	Ground pressure	Overall width	Shoe width	Operating weight	Ground pressure	Overall width
	mm	kg	kPa	mm	mm	kg	kPa	mm
Triple grouser	600	36 000	69.0	3 190	600	35 700	68.5	3 190
	700	36 550	60.1	3 290	700	36 300	59.7	3 290
	800	36 950	53.1	3 390	800	36 700	52.8	3 390
Double grouser	600	36 650	70.3	3 190	600	36 400	69.8	3 190

6.45m boom 2.6m arm 1 644kg bucket 7 250kg counterweight					6.45m boom 3.2m arm 1 880kg bucket 7 000kg counterweight			
Description	Shoe width	Operating weight	Ground pressure	Overall width	Shoe width	Operating weight	Ground pressure	Overall width
	mm	kg	kPa	mm	mm	kg	kPa	mm
Triple grouser	600	35 950	68.9	3 190	600	35 800	68.7	3 190
	700	36 550	60.1	3 290	700	36 350	59.7	3 290
	800	36 950	53.1	3 390	800	36 750	52.9	3 390
Double grouser	600	36 650	70.3	3 190	600	36 450	69.9	3 190

6.45m boom 3.2m arm 1 880kg bucket 7 250kg counterweight				
Description	Shoe width	Operating weight	Ground pressure	Overall width
	mm	kg	kPa	mm
Triple grouser	600	36 050	69.1	3 190
	700	36 600	60.2	3 290
	800	37 000	53.2	3 390
Double grouser	600	36 700	70.4	3 190

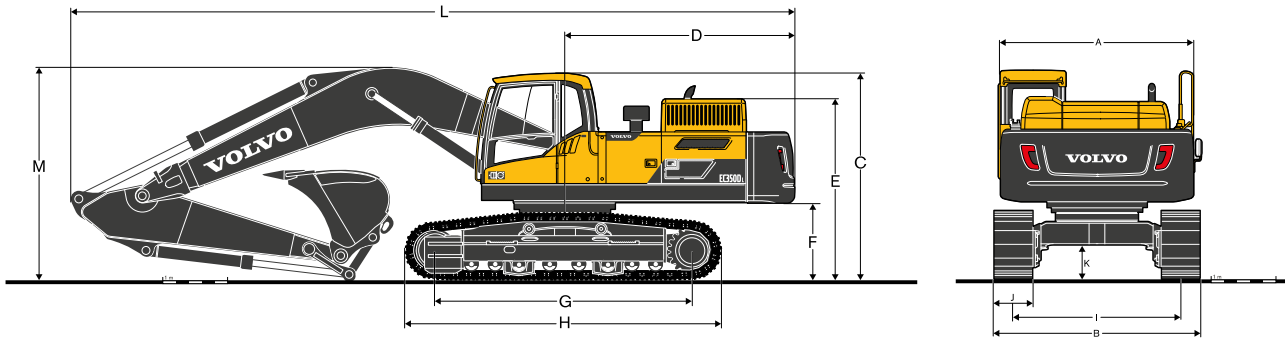
**BUCKET SELECTION GUIDE**

Bucket type		Capacity	Cutting width	Tip radius	Weight	Teeth	EC350D		
							6.45m Boom		
							600mm shoe, 7 000kg counterweight		
							L	mm	mm
Direct fit Buckets	General purpose	1 670	1 350	1 715	1 644	5	C	C	C
		1 920	1 500	1 715	1 784	5	C	C	B
		2 330	1 750	1 715	1 982	5	B	A	X
	Heavy duty	1 920	1 500	1 715	1 880	5	D	C	B
		1 920	1 500	1 715	1 905	5	D	B	B
		1 920	1 500	1 715	1 959	5	C	B	B
		1 920	1 500	1 715	1 985	5	C	B	A
		2 330	1 750	1 715	2 085	5	B	A	X
		2 330	1 750	1 715	2 111	5	B	A	X
		2 330	1 750	1 715	2 165	5	B	A	X
2 330	1 750	1 715	2 191	5	B	A	X		
Bucket type		Capacity	Cutting width	Tip radius	Weight	Teeth	EC350D		
							6.45m Boom		
							600mm shoe, 7 250kg counterweight		
							L	mm	mm
Direct fit Buckets	General purpose	1 670	1 350	1 715	1 644	5	C	C	C
		1 920	1 500	1 715	1 784	5	C	C	B
		2 330	1 750	1 715	1 982	5	B	B	X
	Heavy duty	1 920	1 500	1 715	1 880	5	D	C	B
		1 920	1 500	1 715	1 905	5	D	C	B
		1 920	1 500	1 715	1 959	5	D	C	B
		1 920	1 500	1 715	1 985	5	D	C	B
		2 330	1 750	1 715	2 085	5	B	A	X
		2 330	1 750	1 715	2 111	5	B	A	X
		2 330	1 750	1 715	2 165	5	B	A	X
2 330	1 750	1 715	2 191	5	B	A	X		
Bucket type		Capacity	Cutting width	Tip radius	Weight	Teeth	EC350DL		
							6.45m Boom		
							600mm shoe, 7 000kg counterweight		
							L	mm	mm
Direct fit Buckets	General purpose	1 670	1 350	1 715	1 644	5	C	C	C
		1 920	1 500	1 715	1 784	5	C	C	B
		2 330	1 750	1 715	1 982	5	B	B	X
	Heavy duty	1 920	1 500	1 715	1 880	5	D	C	B
		1 920	1 500	1 715	1 905	5	D	C	B
		1 920	1 500	1 715	1 959	5	D	C	B
		1 920	1 500	1 715	1 985	5	D	C	B
		2 330	1 750	1 715	2 085	5	B	A	X
		2 330	1 750	1 715	2 111	5	B	A	X
		2 330	1 750	1 715	2 165	5	B	A	X
2 330	1 750	1 715	2 191	5	B	A	X		
Bucket type		Capacity	Cutting width	Tip radius	Weight	Teeth	EC350DL		
							6.45m Boom		
							600mm shoe, 7 250kg counterweight		
							L	mm	mm
Direct fit Buckets	General purpose	1 670	1 350	1 715	1 644	5	C	C	C
		1 920	1 500	1 715	1 784	5	C	C	B
		2 330	1 750	1 715	1 982	5	B	B	A
	Heavy duty	1 920	1 500	1 715	1 880	5	D	C	B
		1 920	1 500	1 715	1 905	5	D	C	B
		1 920	1 500	1 715	1 959	5	D	C	B
		1 920	1 500	1 715	1 985	5	D	C	B
		2 330	1 750	1 715	2 085	5	B	B	X
		2 330	1 750	1 715	2 111	5	B	B	X
		2 330	1 750	1 715	2 165	5	B	A	X
2 330	1 750	1 715	2 191	5	B	A	X		

Please consult with your Volvo dealer for the proper match of buckets and attachments to suit the application.  
 The recommendations are given as a guide only, based on typical operation conditions.  
 Bucket capacity based on ISO 7451, heaped material with a 1:1 angle of repose.

Maximum material density  
 A 1 200 - 1 300 kg/m<sup>3</sup> Coal, Caliche, Shale  
 B 1 400 - 1 600 kg/m<sup>3</sup> Wet earth and clay, Limestone, Sandstone  
 C 1 700 - 1 800 kg/m<sup>3</sup> Granite, Wet sand, Well blasted rock  
 D > 1 900 kg/m<sup>3</sup> Wet mud, Iron ore

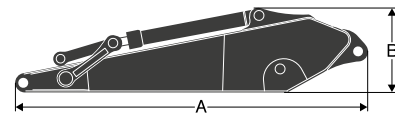
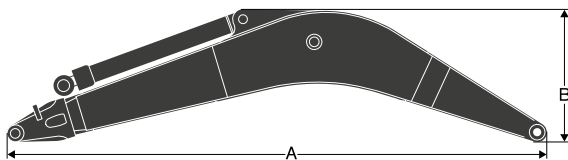
# Specifications



## DIMENSIONS

Description	Unit	EC350D				EC350DL			
<b>Boom</b>	<b>m</b>	<b>6.2</b>	<b>6.45</b>			<b>6.2</b>	<b>6.45</b>		
<b>Arm</b>	<b>m</b>	<b>2.6</b>	<b>2.6</b>	<b>3.2</b>	<b>3.9</b>	<b>2.6</b>	<b>2.6</b>	<b>3.2</b>	<b>3.9</b>
A Overall width of upper structure	mm	2 990	2 990	2 990	2 990	2 990	2 990	2 990	2 990
B Overall width	mm	3 190	3 190	3 190	3 190	3 190	3 190	3 190	3 190
C Overall height of cab	mm	3 230	3 230	3 230	3 230	3 230	3 230	3 230	3 230
D Tail slew radius	mm	3 560	3 560	3 560	3 560	3 560	3 560	3 560	3 560
E Overall height of engine hood	mm	2 830	2 830	2 830	2 830	2 830	2 830	2 830	2 830
F Counterweight clearance *	mm	1 180	1 180	1 180	1 180	1 180	1 180	1 180	1 180
G Tumbler length	mm	3 700	3 700	3 700	3 700	4 020	4 020	4 020	4 020
H Track length	mm	4 630	4 630	4 630	4 630	4 950	4 950	4 950	4 950
I Track gauge	mm	2 590	2 590	2 590	2 590	2 590	2 590	2 590	2 590
J Shoe width	mm	600	600	600	600	600	600	600	600
K Minimum ground clearance *	mm	500	500	500	500	500	500	500	500
L Overall length	mm	11 020	11 270	11 190	11 220	11 020	11 270	11 190	11 220
M Overall height of boom	mm	3 490	3 515	3 320	3 500	3 490	3 515	3 320	3 500

\* Without shoe grouser

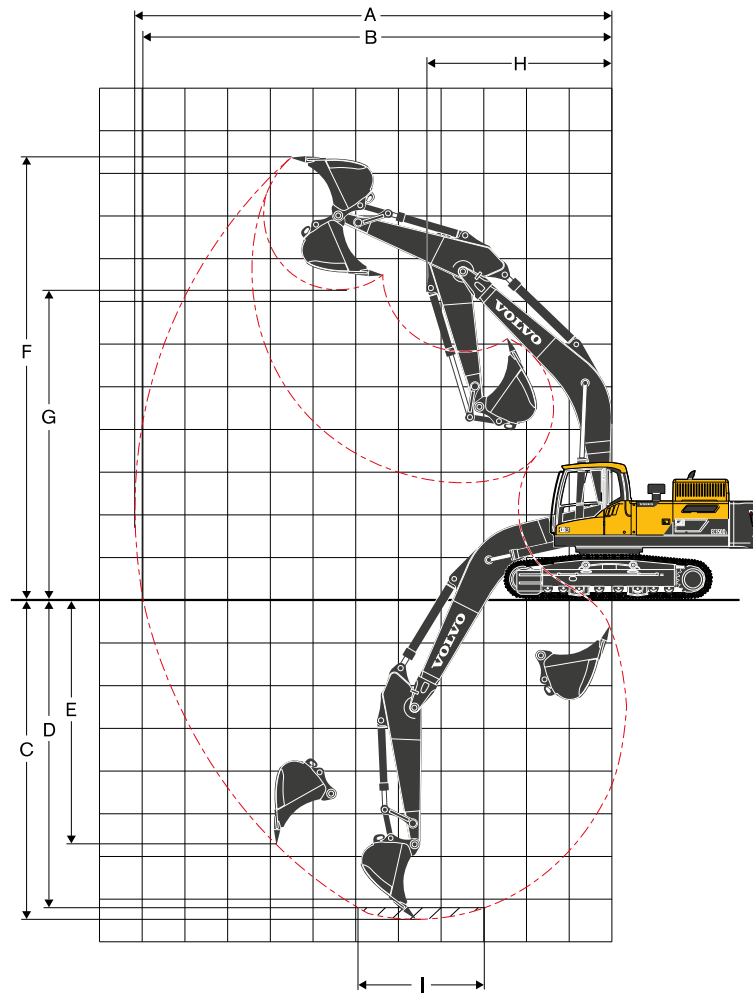


Boom					Arm					
<b>EC350D</b>										
Description	Unit	ME	GP	HD	Description	Unit	ME	GP	HD	GP
<b>Boom</b>	<b>m</b>	<b>6.2</b>	<b>6.45</b>	<b>6.45</b>	<b>Arm</b>	<b>m</b>	<b>2.6</b>	<b>3.2</b>	<b>3.2</b>	<b>3.9</b>
Length (A)	mm	6 560	6 670	6 670	Length (A)	mm	3 765	4 350	4 350	5 045
Height (B)	mm	1 870	1 835	1 835	Height (B)	mm	1 125	1 070	1 070	1 070
Width	mm	816	816	816	Width	mm	560	560	560	560
Weight	kg	3 365	3 105	3 400	Weight	kg	2 015	1 900	2 040	2 165

\* Includes cylinder, piping and pin, excludes boom cyl. Pin

\* Includes cylinder, linkage and pin





#### WORKING RANGES

Description		Unit	EC350D / EC350DL			
Boom		m	6.2	6.45		
Arm		m	2.6	2.6	3.2	3.9
A	Max. digging reach	mm	10 440	10 590	11 110	11 750
B	Max. digging reach on ground	mm	10 210	10 370	10 900	11 560
C	Max. digging depth	mm	6 740	6 880	7 480	8 180
D	Max. digging depth (l = 2 440 mm level)	mm	6 550	6 690	7 310	8 030
E	Max. vertical wall digging depth	mm	5 260	5 440	5 890	6 500
F	Max. cutting height	mm	10 080	10 170	10 330	10 600
G	Max. dumping height	mm	6 820	7 060	7 250	7 520
H	Min. front swing radius	mm	4 120	4 320	4 280	4 300

#### DIGGING FORCES WITH DIRECT FIT BUCKET

Bucket radius		mm	1 828	1 738	1 738	1 738	
Breakout force - bucket	Normal	SAE	kN	206	177	177	177
	Power boost	SAE	kN	224	193	193	193
	Normal	ISO	kN	236	201	201	201
	Power boost	ISO	kN	257	219	219	219
Tearout force - dipper arm	Normal	SAE	kN	183	187	156	136
	Power boost	SAE	kN	200	203	170	148
	Normal	ISO	kN	190	192	160	139
	Power boost	ISO	kN	206	209	174	151
Rotation angle, bucket		°		164	178	178	178

# Specifications

## LIFTING CAPACITY EC350D

Lifting capacity at the arm end without bucket.

For lifting capacity including bucket, simply subtract actual weight of the direct fit bucket or the bucket with quick coupler from the following values.

	Lifting hook related to ground level	1.5 m		3.0 m		4.5 m		6.0 m		7.5 m		9.0 m		Max. reach		mm	
		Along	Across	Along	Across	Along	Across	Along	Across	Along	Across	Along	Across	Along	Across		
Boom: 6.2m Arm: 2.6m Shoe: 600mm CWT: 7 000kg	7.5 m	kg	-	-	-	-	-	*9 470	*9 470	-	-	-	-	*9 620	8 470	6 697	
	6.0 m	kg	-	-	-	-	-	*9 930	*9 930	*9 480	6 940	-	-	9 210	6 660	7 677	
	4.5 m	kg	-	-	-	-	*14 060	*14 060	*11 210	9 610	9 420	6 780	-	8 010	5 760	8 271	
	3.0 m	kg	-	-	-	-	*17 520	13 750	*12 790	9 080	9 150	6 530	-	7 440	5 310	8 563	
	1.5 m	kg	-	-	-	-	19 650	12 960	12 430	8 640	8 900	6 300	-	7 290	5 180	8 583	
	0 m	kg	-	-	-	-	19 340	12 700	12 150	8 380	8 740	6 150	-	7 530	5 330	8 334	
	-1.5 m	kg	-	-	*17 180	*17 180	19 370	12 720	12 090	8 320	8 730	6 140	-	8 290	5 850	7 788	
	-3.0 m	kg	-	-	*23 420	*23 420	*17 540	12 950	12 240	8 460	-	-	-	10 060	7 070	6 876	
	-4.5 m	kg	-	-	-	-	*13 470	13 450	-	-	-	-	-	*10 780	10 290	5 410	
Boom: 6.2m Arm: 2.6m Shoe: 600mm CWT: 7 250kg	7.5 m	kg	-	-	-	-	-	*9 470	*9 470	-	-	-	-	*9 620	8 630	6 697	
	6.0 m	kg	-	-	-	-	-	*9 930	*9 930	*9 480	7 080	-	-	9 360	6 790	7 677	
	4.5 m	kg	-	-	-	-	*14 060	*14 060	*11 210	9 800	9 590	6 920	-	8 150	5 880	8 271	
	3.0 m	kg	-	-	-	-	*17 520	14 020	*12 790	9 260	9 320	6 670	-	7 580	5 430	8 563	
	1.5 m	kg	-	-	-	-	*19 740	13 230	12 650	8 820	9 070	6 440	-	7 420	5 300	8 583	
	0 m	kg	-	-	-	-	19 690	12 970	12 370	8 570	8 910	6 290	-	7 670	5 450	8 334	
	-1.5 m	kg	-	-	*17 180	*17 180	*19 480	12 990	12 310	8 510	8 890	6 280	-	8 450	5 990	7 788	
	-3.0 m	kg	-	-	*23 420	*23 420	*17 540	13 220	12 460	8 650	-	-	-	10 240	7 220	6 876	
	-4.5 m	kg	-	-	-	-	*13 470	*13 470	-	-	-	-	-	*10 780	10 500	5 410	
Boom: 6.45m Arm: 2.6m Shoe: 600mm CWT: 7 000kg	7.5 m	kg	-	-	-	-	-	-	-	-	-	-	-	*9 210	7 880	7 014	
	6.0 m	kg	-	-	-	-	-	*9 750	*9 750	*9 140	6 980	-	-	8 700	6 300	7 953	
	4.5 m	kg	-	-	-	-	*14 260	*14 260	*11 120	9 570	9 420	6 780	-	7 630	5 490	8 528	
	3.0 m	kg	-	-	-	-	-	*12 750	9 010	9 130	6 510	-	-	7 110	5 080	8 811	
	1.5 m	kg	-	-	-	-	-	12 360	8 570	8 870	6 270	-	-	6 970	4 950	8 831	
	0 m	kg	-	-	-	-	19 240	12 610	12 090	8 320	8 710	6 120	-	7 190	5 090	8 589	
	-1.5 m	kg	-	-	*14 380	*14 380	19 290	12 650	12 020	8 270	8 680	6 090	-	7 860	5 550	8 061	
	-3.0 m	kg	-	-	*23 260	*23 260	*17 620	12 870	12 160	8 390	-	-	-	9 380	6 600	7 184	
	-4.5 m	kg	-	-	*18 430	*18 430	*14 150	13 320	-	-	-	-	-	*10 630	9 220	5 799	
Boom: 6.45m Arm: 2.6m Shoe: 600mm CWT: 7 250kg	7.5 m	kg	-	-	-	-	-	-	-	-	-	-	-	*9 210	8 030	7 014	
	6.0 m	kg	-	-	-	-	-	*9 750	*9 750	*9 140	7 120	-	-	8 850	6 420	7 953	
	4.5 m	kg	-	-	-	-	*14 260	*14 260	*11 120	9 750	9 590	6 920	-	7 770	5 610	8 528	
	3.0 m	kg	-	-	-	-	-	*12 750	9 190	9 300	6 650	-	-	7 250	5 200	8 811	
	1.5 m	kg	-	-	-	-	-	12 580	8 750	9 040	6 410	-	-	7 100	5 070	8 831	
	0 m	kg	-	-	-	-	19 590	12 880	12 310	8 510	8 870	6 260	-	7 320	5 200	8 589	
	-1.5 m	kg	-	-	*14 380	*14 380	*19 370	12 920	12 250	8 450	8 840	6 230	-	8 010	5 680	8 061	
	-3.0 m	kg	-	-	*23 260	*23 260	*17 620	13 140	12 380	8 570	-	-	-	9 560	6 750	7 184	
	-4.5 m	kg	-	-	*18 430	*18 430	*14 150	13 590	-	-	-	-	-	*10 630	9 410	5 799	
Boom: 6.45m Arm: 3.2m Shoe: 600mm CWT: 7 000kg	7.5 m	kg	-	-	-	-	-	-	-	*8 290	7 210	-	-	*7 520	6 920	7 664	
	6.0 m	kg	-	-	-	-	-	-	-	*8 400	7 140	-	-	*7 320	5 690	8 531	
	4.5 m	kg	-	-	-	-	*12 740	*12 740	*10 280	9 780	*9 060	6 900	7 080	5 090	6 980	5 020	9 069
	3.0 m	kg	-	-	-	-	*16 360	13 970	*12 020	9 180	9 230	6 600	6 940	4 970	6 540	4 670	9 336
	1.5 m	kg	-	-	-	-	*19 020	13 010	12 480	8 670	8 930	6 320	6 800	4 830	6 410	4 550	9 354
	0 m	kg	-	-	-	-	19 240	12 610	12 120	8 350	8 710	6 120	6 700	4 740	6 560	4 640	9 126
	-1.5 m	kg	-	-	*14 620	*14 620	19 160	12 540	11 970	8 220	8 620	6 030	-	-	7 080	5 000	8 632
	-3.0 m	kg	*17 030	*17 030	*23 090	*23 090	*18 550	12 680	12 030	8 270	8 690	6 100	-	-	8 210	5 780	7 820
	-4.5 m	kg	-	-	*21 460	*21 460	*15 870	13 030	*11 890	8 530	-	-	-	-	*10 410	7 560	6 573
Boom: 6.45m Arm: 3.2m Shoe: 600mm CWT: 7 250kg	7.5 m	kg	-	-	-	-	-	-	-	*8 290	7 340	-	-	*7 520	7 060	7 664	
	6.0 m	kg	-	-	-	-	-	-	-	*8 400	7 270	-	-	*7 320	5 810	8 531	
	4.5 m	kg	-	-	-	-	*12 740	*12 740	*10 280	9 960	*9 060	7 040	7 210	5 200	7 110	5 130	9 069
	3.0 m	kg	-	-	-	-	*16 360	14 240	*12 020	9 370	9 390	6 740	7 070	5 080	6 670	4 780	9 336
	1.5 m	kg	-	-	-	-	*19 020	13 280	12 700	8 850	9 090	6 460	6 920	4 940	6 530	4 660	9 354
	0 m	kg	-	-	-	-	19 590	12 880	12 340	8 530	8 870	6 260	6 820	4 850	6 690	4 750	9 126
	-1.5 m	kg	-	-	*14 620	*14 620	19 510	12 810	12 200	8 400	8 780	6 170	-	-	7 220	5 120	8 632
	-3.0 m	kg	*17 030	*17 030	*23 090	*23 090	*18 550	12 950	12 250	8 450	8 850	6 230	-	-	8 370	5 910	7 820
	-4.5 m	kg	-	-	*21 460	*21 460	*15 870	13 300	*11 890	8 710	-	-	-	-	*10 410	7 720	6 573

Notes: 1. Machine in Fine Mode-F (Power Boost) for lifting capacities. 2. The above loads are in compliance with SAE J1097 and ISO 10567 Hydraulic Excavator Lifting Capacity Standards. 3. Rated loads do not exceed 87% of hydraulic lifting capacity or 75% of tipping load. 4. Rated loads marked with an asterisk (\*) are limited by hydraulic capacity rather than tipping load.

**LIFTING CAPACITY EC350D**

Lifting capacity at the arm end without bucket.

For lifting capacity including bucket, simply subtract actual weight of the direct fit bucket or the bucket with quick coupler from the following values.

	Lifting hook related to ground level	1.5 m		3.0 m		4.5 m		6.0 m		7.5 m		9.0 m		Max. reach		mm	
		Along	Across	Along	Across	Along	Across	Along	Across	Along	Across	Along	Across	Along	Across		
Boom: 6.2m Arm: 2.6m Shoe: 800mm CWT: 7 000kg	7.5 m	kg	-	-	-	-	-	-	*9 470	*9 470	-	-	-	-	*9 620	8 650	6 697
	6.0 m	kg	-	-	-	-	-	-	*9 930	*9 930	*9 480	7 100	-	-	9 420	6 810	7 677
	4.5 m	kg	-	-	-	-	*14 060	*14 060	*11 210	9 820	9 650	6 940	-	-	8 210	5 900	8 271
	3.0 m	kg	-	-	-	-	*17 520	14 050	*12 790	9 290	9 380	6 690	-	-	7 630	5 450	8 563
	1.5 m	kg	-	-	-	-	*19 740	13 270	12 740	8 840	9 130	6 460	-	-	7 470	5 310	8 583
	0 m	kg	-	-	-	-	19 820	13 010	12 460	8 590	8 970	6 310	-	-	7 720	5 470	8 334
	-1.5 m	kg	-	-	*17 180	*17 180	*19 480	13 030	12 390	8 530	8 950	6 300	-	-	8 510	6 000	7 788
	-3.0 m	kg	-	-	*23 420	*23 420	*17 540	13 250	12 550	8 670	-	-	-	-	10 310	7 240	6 876
	-4.5 m	kg	-	-	-	-	*13 470	*13 470	-	-	-	-	-	-	*10 780	10 530	5 410
Boom: 6.2m Arm: 2.6m Shoe: 800mm CWT: 7 250kg	7.5 m	kg	-	-	-	-	-	-	*9 470	*9 470	-	-	-	-	*9 620	8 810	6 697
	6.0 m	kg	-	-	-	-	-	-	*9 930	*9 930	*9 480	7 240	-	-	*9 500	6 940	7 677
	4.5 m	kg	-	-	-	-	*14 060	*14 060	*11 210	10 000	9 810	7 080	-	-	8 350	6 020	8 271
	3.0 m	kg	-	-	-	-	*17 520	14 330	*12 790	9 470	9 540	6 830	-	-	7 760	5 560	8 563
	1.5 m	kg	-	-	-	-	*19 740	13 540	12 960	9 030	9 290	6 590	-	-	7 610	5 430	8 583
	0 m	kg	-	-	-	-	20 170	13 280	12 680	8 770	9 130	6 450	-	-	7 870	5 590	8 334
	-1.5 m	kg	-	-	*17 180	*17 180	*19 480	13 300	12 610	8 710	9 120	6 430	-	-	8 660	6 130	7 788
	-3.0 m	kg	-	-	*23 420	*23 420	*17 540	13 520	12 770	8 850	-	-	-	-	10 490	7 390	6 876
	-4.5 m	kg	-	-	-	-	*13 470	*13 470	-	-	-	-	-	-	*10 780	10 740	5 410
Boom: 6.45m Arm: 2.6m Shoe: 800mm CWT: 7 000kg	7.5 m	kg	-	-	-	-	-	-	-	-	-	-	-	-	-	-	-
	6.0 m	kg	-	-	-	-	-	-	*9 750	*9 750	*9 140	7 140	-	-	8 910	6 440	7 953
	4.5 m	kg	-	-	-	-	*14 260	*14 260	*11 120	9 770	9 650	6 940	-	-	7 820	5 620	8 528
	3.0 m	kg	-	-	-	-	-	-	*12 750	9 220	9 360	6 670	-	-	7 300	5 210	8 811
	1.5 m	kg	-	-	-	-	-	-	12 660	8 780	9 100	6 430	-	-	7 150	5 080	8 831
	0 m	kg	-	-	-	-	19 710	12 920	12 390	8 530	8 930	6 280	-	-	7 370	5 220	8 589
	-1.5 m	kg	-	-	*14 380	*14 380	*19 370	12 960	12 330	8 480	8 900	6 250	-	-	8 070	5 690	8 061
	-3.0 m	kg	-	-	*23 260	*23 260	*17 620	13 180	12 470	8 600	-	-	-	-	9 620	6 770	7 184
	-4.5 m	kg	-	-	*18 430	*18 430	*14 150	13 630	-	-	-	-	-	-	*10 630	9 440	5 799
Boom: 6.45m Arm: 2.6m Shoe: 800mm CWT: 7 250kg	7.5 m	kg	-	-	-	-	-	-	-	-	-	-	-	-	-	-	-
	6.0 m	kg	-	-	-	-	-	-	*9 750	*9 750	*9 140	7 280	-	-	9 060	6 570	7 953
	4.5 m	kg	-	-	-	-	*14 260	*14 260	*11 120	9 950	*9 680	7 080	-	-	7 960	5 740	8 528
	3.0 m	kg	-	-	-	-	-	-	*12 750	9 400	9 520	6 810	-	-	7 430	5 320	8 811
	1.5 m	kg	-	-	-	-	-	-	12 880	8 960	9 260	6 570	-	-	7 290	5 200	8 831
	0 m	kg	-	-	-	-	20 060	13 190	12 610	8 710	9 090	6 410	-	-	7 510	5 340	8 589
	-1.5 m	kg	-	-	*14 380	*14 380	*19 370	13 230	12 550	8 660	9 060	6 380	-	-	8 210	5 820	8 061
	-3.0 m	kg	-	-	*23 260	*23 260	*17 620	13 450	12 690	8 780	-	-	-	-	9 790	6 910	7 184
	-4.5 m	kg	-	-	*18 430	*18 430	*14 150	13 900	-	-	-	-	-	-	*10 630	9 630	5 799
Boom: 6.45m Arm: 3.2m Shoe: 800mm CWT: 7 000kg	7.5 m	kg	-	-	-	-	-	-	-	-	*8 290	7 360	-	-	*7 520	7 070	7 664
	6.0 m	kg	-	-	-	-	-	-	-	-	*8 400	7 290	-	-	*7 320	5 820	8 531
	4.5 m	kg	-	-	-	-	*12 740	*12 740	*10 280	9 990	*9 060	7 060	7 250	5 220	7 160	5 150	9 069
	3.0 m	kg	-	-	-	-	*16 360	14 270	*12 020	9 390	9 450	6 760	7 120	5 090	6 710	4 790	9 336
	1.5 m	kg	-	-	-	-	*19 020	13 320	12 780	8 880	9 150	6 480	6 970	4 960	6 580	4 670	9 354
	0 m	kg	-	-	-	-	19 720	12 920	12 420	8 550	8 930	6 270	6 870	4 860	6 740	4 770	9 126
	-1.5 m	kg	-	-	*14 620	*14 620	19 640	12 850	12 280	8 430	8 840	6 190	-	-	7 270	5 130	8 632
	-3.0 m	kg	*17 030	*17 030	*23 090	*23 090	*18 550	12 990	12 330	8 470	8 910	6 250	-	-	8 420	5 930	7 820
	-4.5 m	kg	-	-	*21 460	*21 460	*15 870	13 340	*11 890	8 740	-	-	-	-	*10 410	7 740	6 573
Boom: 6.45m Arm: 3.2m Shoe: 800mm CWT: 7 250kg	7.5 m	kg	-	-	-	-	-	-	-	-	*8 290	7 500	-	-	*7 520	7 210	7 664
	6.0 m	kg	-	-	-	-	-	-	-	-	*8 400	7 430	-	-	*7 320	5 940	8 531
	4.5 m	kg	-	-	-	-	*12 740	*12 740	*10 280	10 170	*9 060	7 190	7 380	5 330	7 290	5 260	9 069
	3.0 m	kg	-	-	-	-	*16 360	14 540	*12 020	9 570	9 620	6 890	7 250	5 200	6 830	4 900	9 336
	1.5 m	kg	-	-	-	-	*19 020	13 590	13 000	9 060	9 310	6 610	7 100	5 070	6 700	4 780	9 354
	0 m	kg	-	-	-	-	*20 040	13 190	12 640	8 740	9 100	6 410	7 000	4 970	6 870	4 880	9 126
	-1.5 m	kg	-	-	*14 620	*14 620	*19 810	13 120	12 500	8 610	9 000	6 330	-	-	7 410	5 250	8 632
	-3.0 m	kg	*17 030	*17 030	*23 090	*23 090	*18 550	13 260	12 560	8 660	9 070	6 390	-	-	8 580	6 060	7 820
	-4.5 m	kg	-	-	*21 460	*21 460	*15 870	13 610	*11 890	8 920	-	-	-	-	*10 410	7 900	6 573

Notes: 1. Machine in Fine Mode-F (Power Boost) for lifting capacities. 2. The above loads are in compliance with SAE J1097 and ISO 10567 Hydraulic Excavator Lifting Capacity Standards. 3. Rated loads do not exceed 87% of hydraulic lifting capacity or 75% of tipping load. 4. Rated loads marked with an asterisk (\*) are limited by hydraulic capacity rather than tipping load.

# Specifications

## LIFTING CAPACITY EC350DL

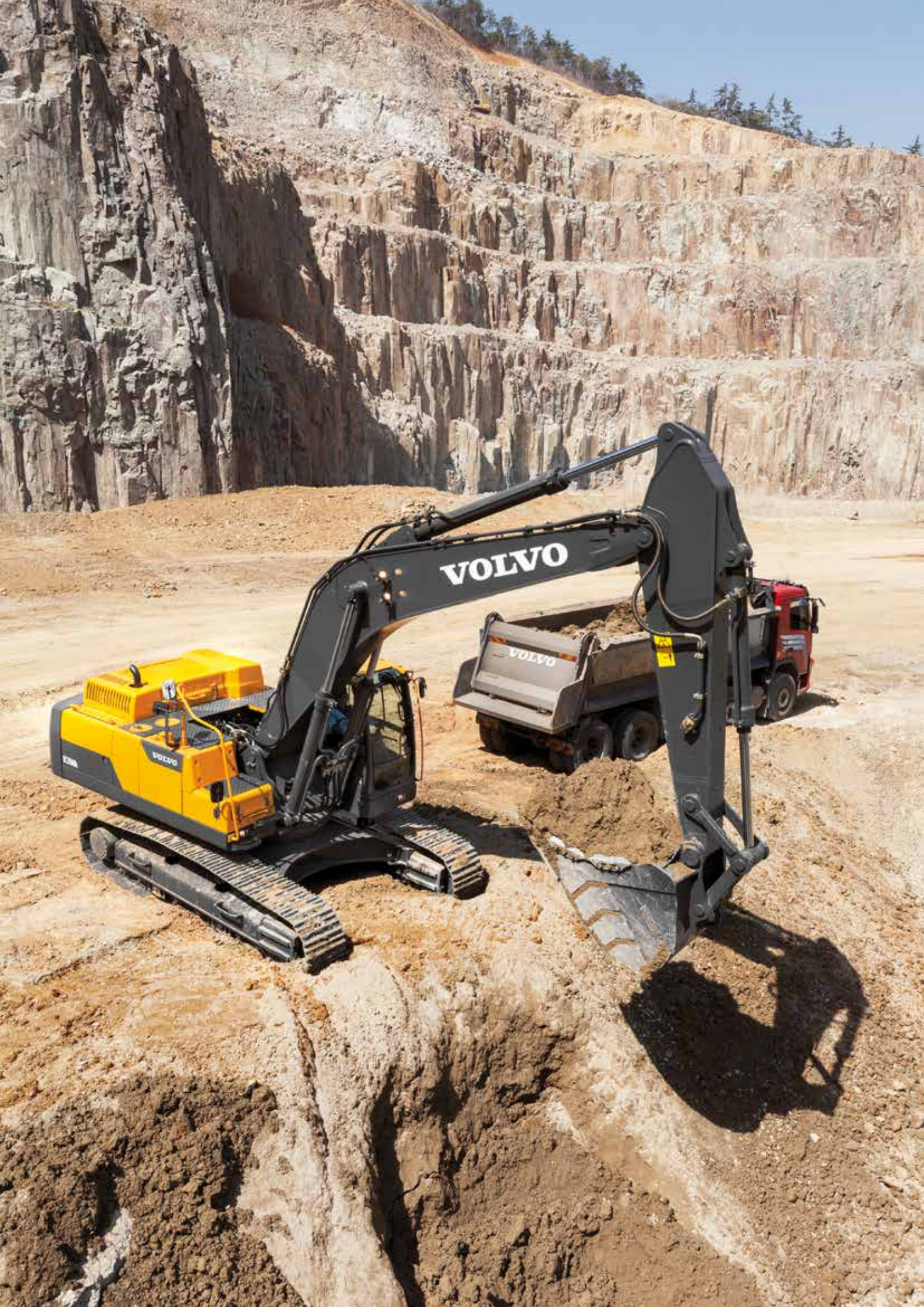
Lifting capacity at the arm end without bucket.

For lifting capacity including bucket, simply subtract actual weight of the direct fit bucket or the bucket with quick coupler from the following values.

	Lifting hook related to ground level	1.5 m		3.0 m		4.5 m		6.0 m		7.5 m		9.0 m		Max. reach		mm	
		Along	Across	Along	Across	Along	Across	Along	Across	Along	Across	Along	Across	Along	Across		
Boom: 6.2m Arm: 2.6m Shoe: 600mm CWT: 7 000kg	7.5 m	kg	-	-	-	-	-	-	*9 470	*9 470	-	-	-	-	*9 620	8 770	6 697
	6.0 m	kg	-	-	-	-	-	-	*9 930	*9 930	*9 480	7 200	-	-	*9 500	6 900	7 677
	4.5 m	kg	-	-	-	-	*14 060	*14 060	*11 210	9 950	*9 880	7 040	-	-	*9 180	5 990	8 271
	3.0 m	kg	-	-	-	-	*17 520	14 250	*12 790	9 420	10 520	6 790	-	-	8 540	5 530	8 563
	1.5 m	kg	-	-	-	-	*19 740	13 460	*14 130	8 970	10 260	6 560	-	-	8 380	5 400	8 583
	0 m	kg	-	-	-	-	*20 210	13 210	14 150	8 720	10 100	6 410	-	-	8 670	5 550	8 334
	-1.5 m	kg	-	-	*17 180	*17 180	*19 480	13 230	14 080	8 660	10 080	6 400	-	-	9 570	6 100	7 788
	-3.0 m	kg	-	-	*23 420	*23 420	*17 540	13 450	*13 270	8 800	-	-	-	-	*11 030	7 350	6 876
	-4.5 m	kg	-	-	-	-	*13 470	*13 470	-	-	-	-	-	-	*10 780	10 680	5 410
Boom: 6.45m Arm: 2.6m Shoe: 600mm CWT: 7 000kg	7.5 m	kg	-	-	-	-	-	-	-	-	-	-	-	*9 210	8 000	7 014	
	6.0 m	kg	-	-	-	-	-	-	*9 750	*9 750	*9 140	7 100	-	-	*9 140	6 410	7 953
	4.5 m	kg	-	-	-	-	*14 260	*14 260	*11 120	9 720	*9 680	6 900	-	-	8 600	5 590	8 528
	3.0 m	kg	-	-	-	-	-	-	*12 750	9 170	10 330	6 630	-	-	8 030	5 180	8 811
	1.5 m	kg	-	-	-	-	-	-	*14 090	8 720	10 060	6 390	-	-	7 880	5 050	8 831
	0 m	kg	-	-	-	-	*20 110	12 840	13 840	8 480	9 890	6 240	-	-	8 130	5 190	8 589
	-1.5 m	kg	-	-	*14 380	*14 380	*19 370	12 890	13 780	8 420	9 850	6 210	-	-	8 910	5 660	8 061
	-3.0 m	kg	-	-	*23 260	*23 260	*17 620	13 100	*13 470	8 550	-	-	-	-	10 660	6 730	7 184
	-4.5 m	kg	-	-	*18 430	*18 430	*14 150	13 550	-	-	-	-	-	-	*10 630	9 380	5 799
Boom: 6.45m Arm: 2.6m Shoe: 600mm CWT: 7 250kg	7.5 m	kg	-	-	-	-	-	-	-	-	-	-	-	*9 210	8 150	7 014	
	6.0 m	kg	-	-	-	-	-	-	*9 750	*9 750	*9 140	7 240	-	-	*9 140	6 530	7 953
	4.5 m	kg	-	-	-	-	*14 260	*14 260	*11 120	9 900	*9 680	7 040	-	-	8 750	5 710	8 528
	3.0 m	kg	-	-	-	-	-	-	*12 750	9 350	*10 480	6 770	-	-	8 170	5 290	8 811
	1.5 m	kg	-	-	-	-	-	-	*14 090	8 910	10 230	6 530	-	-	8 020	5 160	8 831
	0 m	kg	-	-	-	-	*20 110	13 110	14 080	8 660	10 060	6 370	-	-	8 280	5 300	8 589
	-1.5 m	kg	-	-	*14 380	*14 380	*19 370	13 160	14 020	8 610	10 030	6 350	-	-	9 070	5 780	8 061
	-3.0 m	kg	-	-	*23 260	*23 260	*17 620	13 370	*13 470	8 730	-	-	-	-	*10 710	6 870	7 184
	-4.5 m	kg	-	-	*18 430	*18 430	*14 150	13 820	-	-	-	-	-	-	*10 630	9 570	5 799
Boom: 6.45m Arm: 3.2m Shoe: 600mm CWT: 7 000kg	7.5 m	kg	-	-	-	-	-	-	-	-	*8 290	7 320	-	-	*7 520	7 040	7 664
	6.0 m	kg	-	-	-	-	-	-	-	-	*8 400	7 250	-	-	*7 320	5 790	8 531
	4.5 m	kg	-	-	-	-	*12 740	*12 740	*10 280	9 930	*9 060	7 020	7 970	5 190	*7 390	5 120	9 069
	3.0 m	kg	-	-	-	-	*16 360	14 200	*12 020	9 340	*9 970	6 720	7 830	5 060	7 380	4 760	9 336
	1.5 m	kg	-	-	-	-	*19 020	13 240	*13 560	8 830	10 110	6 440	7 680	4 920	7 240	4 640	9 354
	0 m	kg	-	-	-	-	*20 040	12 840	13 880	8 500	9 890	6 240	7 580	4 830	7 430	4 740	9 126
	-1.5 m	kg	-	-	*14 620	*14 620	*19 810	12 770	13 730	8 370	9 790	6 150	-	-	8 020	5 100	8 632
	-3.0 m	kg	*17 030	*17 030	*23 090	*23 090	*18 550	12 910	13 790	8 420	9 870	6 210	-	-	9 310	5 900	7 820
	-4.5 m	kg	-	-	*21 460	*21 460	*15 870	13 260	*11 890	8 690	-	-	-	-	*10 410	7 700	6 573
Boom: 6.45m Arm: 3.2m Shoe: 600mm CWT: 7 250kg	7.5 m	kg	-	-	-	-	-	-	-	-	*8 290	7 460	-	-	*7 520	7 170	7 664
	6.0 m	kg	-	-	-	-	-	-	-	-	*8 400	7 390	-	-	*7 320	5 910	8 531
	4.5 m	kg	-	-	-	-	*12 740	*12 740	*10 280	10 120	*9 060	7 160	*8 070	5 300	*7 390	5 230	9 069
	3.0 m	kg	-	-	-	-	*16 360	14 470	*12 020	9 520	*9 970	6 860	7 970	5 170	7 510	4 870	9 336
	1.5 m	kg	-	-	-	-	*19 020	13 510	*13 560	9 010	10 290	6 570	7 820	5 030	7 370	4 750	9 354
	0 m	kg	-	-	-	-	*20 040	13 110	14 120	8 680	10 060	6 370	7 710	4 940	7 560	4 850	9 126
	-1.5 m	kg	-	-	*14 620	*14 620	*19 810	13 040	13 970	8 560	9 970	6 290	-	-	8 170	5 210	8 632
	-3.0 m	kg	*17 030	*17 030	*23 090	*23 090	*18 550	13 180	14 030	8 600	10 040	6 350	-	-	9 480	6 030	7 820
	-4.5 m	kg	-	-	*21 460	*21 460	*15 870	13 540	*11 890	8 870	-	-	-	-	*10 410	7 860	6 573
Boom: 6.45m Arm: 3.9m Shoe: 600mm CWT: 7 000kg	9.0 m	kg	-	-	-	-	-	-	-	-	-	-	-	*6 340	*6 340	7 250	
	7.5 m	kg	-	-	-	-	-	-	-	-	*7 210	*7 210	-	-	*5 920	*5 920	8 437
	6.0 m	kg	-	-	-	-	-	-	-	-	*7 520	7 410	*7 050	5 380	*5 780	5 130	9 232
	4.5 m	kg	-	-	-	-	-	-	*9 190	*9 190	*8 280	7 140	*7 800	5 280	*5 830	4 590	9 730
	3.0 m	kg	-	-	-	-	*14 560	*14 560	*11 020	9 540	*9 280	6 810	7 890	5 110	*6 050	4 290	9 979
	1.5 m	kg	-	-	-	-	*17 750	13 520	*12 770	8 940	10 170	6 480	7 690	4 930	*6 450	4 170	9 996
	0 m	kg	-	-	*9 020	*9 020	*19 510	12 880	13 910	8 520	9 890	6 220	7 540	4 780	6 670	4 230	9 783
	-1.5 m	kg	*9 200	*9 200	*13 760	*13 760	*19 920	12 650	13 660	8 300	9 720	6 070	7 460	4 720	7 100	4 500	9 324
	-3.0 m	kg	*14 350	*14 350	*19 900	*19 900	*19 240	12 680	13 620	8 270	9 700	6 060	-	-	8 030	5 070	8 580
-4.5 m	kg	*20 520	*20 520	*24 310	*24 310	*17 310	12 930	*13 030	8 420	-	-	-	-	*9 780	6 280	7 462	
-6.0 m	kg	-	-	*18 300	*18 300	*13 310	*13 310	-	-	-	-	-	-	*9 920	9 410	5 754	

Notes: 1. Machine in "Fine Mode-F" (Power Boost) for lifting capacities. 2. The above loads are in compliance with SAE J1097 and ISO 10567 Hydraulic Excavator Lifting Capacity Standards. 3. Rated loads do not exceed 87% of hydraulic lifting capacity or 75% of tipping load. 4. Rated loads marked with an asterisk (\*) are limited by hydraulic capacity rather than tipping load.







# Equipment

---

## STANDARD EQUIPMENT

---

### Engine

Turbocharged, four-stroke diesel engine with water cooling, direct injection and charged air cooler

Air filter with indicator

Air intake heater

Air screen cap

Fuel filter and water separator

Alternator, 110 A

### Electric / Electronic control system

Contronics

Advanced mode control system

Self-diagnostic system

Machine status indication

Engine speed sensing power control

Automatic idling system

One-touch power boost

Safety stop/start function

Adjustable LCD color monitor

Master electrical disconnect switch

Engine restart prevention circuit

High-capacity halogen work lights:

Two frame-mounted

Two boom-mounted

Batteries, 2 x 12 V / 200 Ah

Start motor, 24 V / 5.5 kW

### Frame

Access way with handrail

Tool storage area

Punched metal anti-slip plates

Undercovers

### Undercarriage and structures

Undercover

Hydraulic track adjusters

Greased and sealed track link

Track Guard

### Hydraulic system

Automatic sensing hydraulic system

Summation system

Boom priority

Arm priority

Swing priority

ECO mode fuel saving technology

Boom, arm and bucket regeneration valves

Swing anti-rebound valves

Boom and arm holding valves

Multi-stage filtering system

Cylinder cushioning

Cylinder contamination seals

Automatic two-speed travel motors

Hydraulic oil, ISO VG 46

---

## STANDARD EQUIPMENT

---

### Cab and interior

Travel pedals and hand levers

Adjustable operator seat and joystick control console

Control joysticks

Heater & air-conditioner, automatic

Flexible antenna

AM/FM stereo with CD player, MP3 and USB input

Control lock out lever

Cab, all-weather sound suppressed, includes:

Cup holders

Door locks

Tinted glass

Floor mat

Horn

Large storage area

Pull-up type front window

Removable lower windshield

Seat belt

Safety glass

Emergency hammer

Sun screens, front, roof, rear

Windshield wiper with intermittent feature

Master key

### Track Shoes

600 mm with triple grousers

### Digging equipment

Linkage

---

**OPTIONAL EQUIPMENT**

---

**Engine**

Auto engine shutdown  
Oil bath pre-cleaner  
Block heater: 240 V  
Diesel coolant heater, 10 kW  
Extra water separator  
Water separator with heater  
Fuel filler pump: 35 lpm, 50 lpm with automatic shut-off

**Electric**

Extra work lights:  
Three cab-mounted (Two front, one rear)  
Two boom-mounted  
One counterweight-mounted  
Travel alarm  
Caretrack and three year Caretrack subscription  
Anti-theft with code lock system  
Rotating warning beacon

**Frame**

Walk way  
Cabin entrance step  
Rearview mirror on counterweight  
Heavy-duty undercover for upper-structure  
7 000kg, 7 250kg counterweight

**Undercarriage and structures**

Full track guard  
Track shoes:  
700/800 mm with triple grousers  
600 mm with double grousers  
Heavy-duty undercover

**Hydraulic system**

Hose rupture valve: boom, arm  
Overload warning device  
Boom float function with HRV  
Boom float function without HRV  
Hydraulic piping:  
Work tool management system (up to 20 programmable memories)  
Breaker & shear, 1 and 2 pump flow  
Additional return filter  
Oil leak (drain) line on base machine  
Quick coupler piping  
Volvo hydraulic quick coupler S3, U36  
Hydraulic oil, ISO VG 32, 68  
Hydraulic oil, biodegradable ISO VG 46  
Hydraulic oil, longlife oil ISO VG 32, 46, 68

---

**OPTIONAL EQUIPMENT**

---

**Cab and interior**

AM/FM stereo  
ROPS (ISO12117-2) certified cab  
Fabric seat without heater  
Fabric seat with heater  
Fabric seat with heater and air suspension  
Opening top hatch  
Cab-mounted falling object guard (FOG)  
Frame-mounted falling object guard (FOG)  
Cab-mounted falling object protective structure (FOPS)  
Smoker kit (ashtray and lighter)  
Safety net for front window  
Front rain shield  
Sun shield, roof hatch (steel)  
Rear view camera  
Specific key

**Digging equipment**

Boom: 6.2 m, 6.45 m  
Arm: 2.6 m, 3.2 m, 3.9 m  
Linkage with lifting eye

**Service**

Tool kit, daily maintenance  
Tool kit, full scale  
Spare parts

**Other**

Siberian kit

**V O L V O**