

V O L V O



Volvo Excavators 72,5-75 t / 159.835-165.347 lb 519 hp

EC750D

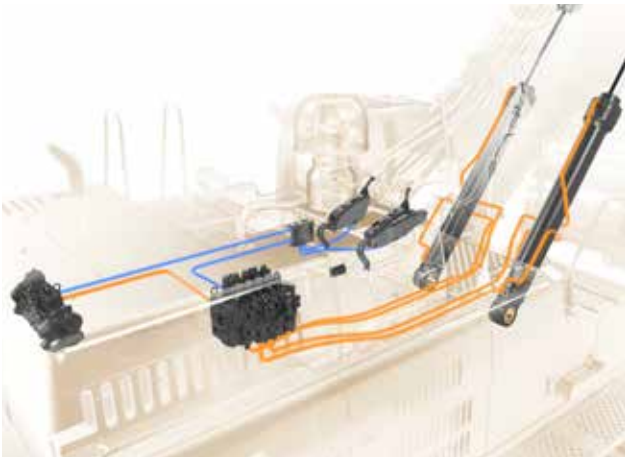
Volvo Construction Equipment

Gain more, pay less

Secure more profit and reduce your Total Cost of Ownership by increasing productivity and fuel efficiency. Do more for less on your job site with the EC750D's Volvo D16 engine, which delivers increased horsepower and fuel efficiency. The machine's electro hydraulic system provides high productivity and excellent control.

Electro hydraulic system

Enhance fuel efficiency while increasing productivity and performance. The new and improved Volvo designed electro-hydraulic system uses intelligent technology to control on-demand flow and reduces internal losses in the hydraulic circuit. This provides superior digging force, shortens cycle times and increases controllability.



Increased bucket capacity

The EC750D delivers more tons per hour, fitted with larger buckets for faster and more efficient on site production. To gain profitability, the increased horsepower, hydraulic pressure and flow enable the machine to perform at optimal capacity, loading more material in one load for greater productivity.



Work modes

Volvo's unique integrated work mode system now includes the G4 mode for optimum fuel efficiency and performance, incorporating the work modes within the throttle control. When the operator selects the best work mode for the task at hand – I (idle), F (fine), G (General), H (Heavy) and P (Power) – the rpm is already set for maximum efficiency.



Volvo Cab

The comfortable, low noise environment and adjustable seat increases operator efficiency and capacity to improve production. Volvo's industry-leading cab boasts superior visibility from large expanses of front and side glass with slim cab pillars and the spacious environment provides ample storage and leg room.





VOLVO D16 ENGINE

Featuring advanced technology and built on decades of experience, the new Volvo D16 engine delivers 11% increased horsepower for the ultimate combination of high productivity and increased fuel efficiency.

A star performance

The EC750D's outstanding digging force gets the job done whether you're working at a mine, quarry or in heavy construction applications. The EC750D digs, swings and loads using the most efficient technology and its improved stability, tractive force and Eco Mode, delivers low fuel consumption and improved cycle times for a star performance.

Improved stability

Improve your stability and work in more challenging environments with the machine's wider track gauge and heavier counterweight, which both contribute towards a well-balanced and solid machine when operating in adverse terrains.



ECO Mode

Save fuel without any loss of performance in most operating conditions. Volvo's unique ECO Mode optimizes the hydraulic system to reduce flow and pressure losses, for improved fuel efficiency. ECO Mode is automatically selected but can be switched off via the keypad.



Tractive force

For more power, better productivity and ease of moving around your jobsite, the machine's high system pressure and durable track ensure impressive tractive force when climbing gradients and travelling over unstable ground. Perform more tasks in hard to reach areas of your jobsite.



Improved cycle time

Get more done in less time. The Volvo hydraulic system, leads to a more powerful and combined pump flow to the bucket for smooth operation, improved cycle time and increased fuel efficiency. The optional boom float delivers more control, fast minimizes operation costs and maximizes uptime.



DIGGING FORCE

Get the job done faster with ease because of the EC750D's constant high system pressure, which delivers greater digging force and reduced cycle times, particularly when working with hard and heavy materials.

Strong, solid and superior

Use the best machine for the job in tough working conditions. The EC750D is built using durable Volvo components, a reinforced structure and machine protection for a longer life in tough environments. Robust parts and easy service access increase uptime and keep maintenance to a minimum to reduce operating costs.

Durable Volvo components

Volvo's tried and tested components have proven to be reliable even in the toughest applications, delivering maximum uptime. Volvo's commitment to its development process and quality levels ensures that its rigorous testing procedures produce the best quality components and machines.



Reinforced structure

The reinforced upper and lower frame are built to withstand tougher conditions for improved durability and reliability. The reinforced idler frame, track links and bottom rollers are designed and built for constant impact, leading to machine longevity and a sustained level of uptime in demanding applications.



Easy service access

Grouped filters and the electric distribution box are easily accessed via the wide-opening compartment doors and walkways. Greasing points can all be accessed in one machine position and the EC750D's design facilitates easy cleaning, inspection and maintenance for increased uptime.



Undercover protection

For increased durability and to protect components, the built-in heavy-duty plate provides additional protection to the underside of the machine in hard applications – preventing damage from rocks and debris.





BOOM AND ARM

The reinforced heavy-duty boom and arm built from high strength tensile steel increases reliability and machine uptime, even in severe applications. Steel strips are welded under the arm to further increase protection and various boom and arm configurations are available to suit any bucket size or application.

Strength in numbers

Maximize your productivity and profitability with Volvo's EC750D excavator and a range of durable attachments. Increase your versatility, access more applications and perform a variety of tasks on one job – all while experiencing faster cycle times and excellent control.

HD Buckets

Volvo's heavy-duty bucket, built using wear resistant plates, excels at digging compact materials including loose rock, hard clay and gravel. It's perfect for quarrying and mining applications and is made out of reinforced high quality durable materials for a long life and superior performance.



Universal Quick Coupler

Volvo offers a Universal quick coupler which perfectly matches Volvo's bucket range. The Volvo Universal quick coupler also picks up a variety of attachments from various manufacturers and the Volvo front-pin lock quick coupler meets the latest safety regulations.



Genuine Volvo Wear Parts

The positioning of Genuine Volvo wear parts cover critical areas, which protect the bucket and prolongs its lifespan. A wide range of wear parts are offered to protect your complete bucket, such as teeth, adapter, segments, side cutter and shroud. Strong high tensile steel has been used to increase the bucket's durability.



Attachment Management System

The password protected attachment management system allows storage for up to 20 different attachments. The system allows the operator to pre-set hydraulic flow and pressure inside the cab through the monitor, which ensures the use of various attachments for increased versatility.





ATTACHMENTS

Volvo's attachments have been purpose-built to work in perfect harmony with Volvo machines, forming one solid, reliable unit. With functions and properties ideally matched, Volvo attachments are an integrated part of the excavator for which they're intended – delivering maximum productivity.

Tough it out

ECO Mode

Save fuel without any loss of performance in most operating conditions with Volvo's unique ECO Mode.

Boom and arm

The reinforced heavy-duty boom and arm increases reliability and machine uptime, even in challenging applications.

Electro hydraulic system

The electro-hydraulic system uses intelligent technology to control on-demand flow and reduce losses in the hydraulic circuit.

Durable Volvo components

Volvo's tried and tested components have proven to be reliable even in the toughest applications.

Digging force

The constant high system pressure delivers greater digging force and reduced cycle times to get the job done faster.

Attachments

A range of Volvo attachments including hard wearing buckets are an integrated part of the excavator, delivering maximum productivity.



Increased bucket capacity

The EC750D delivers more tons per hour, fitted with larger buckets for faster and more efficient on site production.

Customer Support Agreements

Customer Support Agreements offer preventive maintenance, total repairs and a number of uptime services.

Volvo Cab

The comfortable, low noise environment and adjustable seat increases operator efficiency and capacity to improve production.

Volvo D16 engine

The high quality D16 engine delivers 11% increased horsepower for high productivity and increased fuel efficiency.



Reinforced structure

The reinforced upper and lower frame are built to withstand tougher conditions for improved durability and reliability.

Easy service access

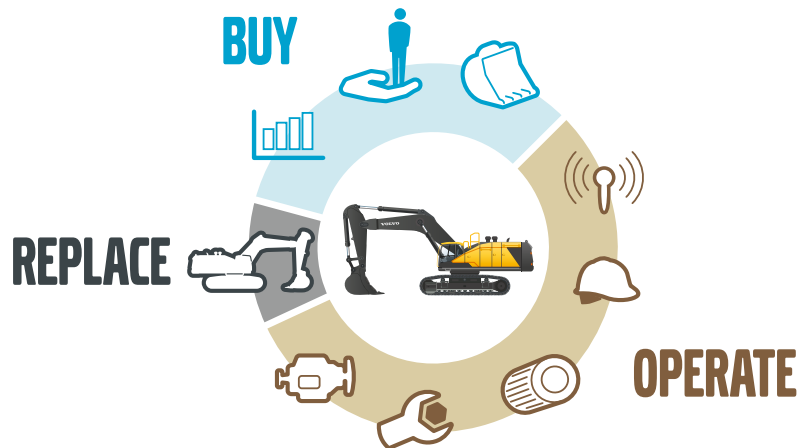
The EC750D's design facilitates easy cleaning, inspection and maintenance for increased uptime.

Adding value to your business

Being a Volvo customer means having a complete set of services at your fingertips. Volvo can offer you a long-term partnership, protect your revenue and provide a full range of customer solutions using high quality parts, delivered by passionate people. Volvo is committed to increasing the positive return on your investment and maximising uptime.

Complete Solutions

Volvo has the right solution for you. So why not let us provide all your needs throughout the whole life cycle of your machine? By listening to your requirements, we can reduce your total cost of ownership and increase your revenue.



Genuine Volvo Parts

Our attention to detail is what makes us stand out. This proven concept acts as a solid investment in your machine's future. Parts are extensively tested and approved because every part is vital for uptime and performance. Only by using Genuine Volvo Parts, can you be sure that your machine retains the renowned Volvo quality.

Service Network

In order to respond to your needs faster, a Volvo expert is on their way to your job site from one of our Volvo facilities. With our extensive infrastructure of technicians, workshops and dealers, Volvo has a comprehensive network to fully support you using local knowledge and global experience.





CUSTOMER SUPPORT AGREEMENTS

The range of Customer Support Agreements offer preventive maintenance, total repairs and a number of uptime services. Volvo uses the latest technology to monitor machine operation and status, giving you advice to increase your profitability. By having a Customer Support Agreement you are in control of your service costs.

Volvo EC750D in detail

Engine

The Volvo diesel engine delivers lower emissions, superior performance and fuel efficiency. The engine uses precise, highpressure fuel injectors, turbo charger and intercooler, and electronic engine controls to optimize machine performance.

Air Filter: 3-stage with precleaner.

Automatic Idling System: Reduces engine speed to idle when the levers and pedals are not activated resulting in less fuel consumption and low cab noise levels.

Engine	Volvo	D16E
Max power at	r/min (r/s)	1.800 (30)
Net, ISO 9249/SAE J1349	kW (hp)	382 (512)
Gross, ISO 14396/SAE J1995	kW (hp)	393 (527)
Max torque	Nm (ft lbf)	2.500 (1.844)
at engine speed	r/min (r/s)	1.340 (22,3)
No. of cylinders		6
Displacement	l (in ³)	16,1 (983)
Bore	mm (in)	144 (5,7)
Stroke	mm (in)	165 (6,5)

Electrical System

High-capacity electrical system that is well protected. Waterproof double-lock harness plugs are used to secure corrosion-free connections. The main relays and solenoid valves are shielded to prevent damage. The master switch is standard. Contronics provides advanced monitoring of machine functions and important diagnostic information.

Voltage	V	24
Batteries	V	2 x 12
Battery capacity	Ah	210
Alternator	V/A	28 / 80

Service Refill

Fuel tank	l (gal)	840 (222)
Hydraulic system, total	l (gal)	655 (173)
Hydraulic tank	l (gal)	350 (92,5)
Engine oil	l (gal)	49 (12,9)
Engine coolant	l (gal)	66 (17,4)
Slew reduction unit	l (gal)	2 x 6,8 (2 x 1,8)
Travel reduction unit	l (gal)	2 x 13,5 (2 x 3,6)

Swing System

The swing system uses an axial piston motors, driving a planetary gearbox for maximum torque. An automatic holding brake and anti-rebound valve are standard.

Max. slew speed	r/min	7
Max. slew torque	kNm (ft lbf)	274 (202.387)

Travel System

Each track is powered by an automatic two-speed shift travel motor. The track brakes are multi-disc, spring-applied and hydraulic released. The travel motor, brake and planetary gears are well protected within the track frame.

Max. drawbar pull	kN (lbf)	478 (107.459)
Max. travel speed (low)	km/h (mi/h)	2,9 (1,8)
Max. travel speed (high)	km/h (mi/h)	4,6 (2,9)
Gradeability	°	35

Undercarriage

The undercarriage has a robust X-shaped frame. Greased and sealed track chains are standard.

Track shoes		2 x 48
Link pitch	mm (in)	260 (10,2)
Shoe width, double grouser	mm (in)	650 / 750 / 900 (25,5 / 29,5 / 35,5)
Bottom rollers		2 x 8
Top rollers		2 x 3

Hydraulic system

The new electro-hydraulic system and new MCV (main control valve) use intelligent technology to control on-demand flow for high-productivity, high-digging capacity and excellent fuel economy. The summation system, boom, arm and swing priority along with boom, arm and bucket regeneration provides optimum performance.

The following important functions are included in the system:

Summation system: Combines the flow of both hydraulic pumps to ensure quick cycle times and high productivity.

Boom priority: Gives priority to the boom operation for faster raising when loading or performing deep excavations.

Arm priority: Gives priority to the arm operation for faster cycle times in leveling and for increased bucket filling when digging.

Swing priority: Gives priority to swing functions for faster simultaneous operations.

Regeneration system: Prevents cavitation and provides flow to other movements during simultaneous operations for maximum productivity.

Holding valves: Boom and arm holding valves prevent the digging equipment from creeping.

Main pump. Type 2 x variable displacement axial piston pumps

Maximum flow	l/min (gal/min)	2 x 450 (2 x 118,9)
--------------	-----------------	---------------------

Pilot pump. Type Gear pump

Maximum flow	l/min (gal/min)	1 x 34,5 (1 x 9,1)
--------------	-----------------	--------------------

Max. pressure

Implement	MPa (psi)	34,3 (4.975)
Travel circuit	MPa (psi)	34,3 (4.975)
Slew circuit	MPa (psi)	26,5 (3.843)
Pilot circuit	MPa (psi)	3,9 (566)

Hydraulic Motors

Travel: Variable displacement axial piston motor with mechanical brake
Slew: Fixed displacement axial piston motor with mechanical brake

Hydraulic Cylinders

Mono boom		2
Bore x Stroke	ø x mm (ø x in)	190 x 1.790 (7,5 x 70,5)
Arm		1
Bore x Stroke	ø x mm (ø x in)	215 x 2.070 (8,5 x 81,5)
Bucket		1
Bore x Stroke	ø x mm (ø x in)	190 x 1.450 (7,5 x 57,1)
ME Bucket		1
Bore x Stroke	ø x mm (ø x in)	200 x 1.450 (7,9 x 57,1)

Cab

The operator's cab has easy access via a wide door opening. The cab is supported on hydraulic dampening mounts to reduce shock and vibration levels. These along with sound absorbing lining provide low noise levels. The cab has excellent all-round visibility. The front windshield can easily slide up into the ceiling, and the lower front glass can be removed and stored in the side door.

Integrated air-conditioning and heating system: The pressurized and filtered cab air is supplied by an automatically-controlled fan. The air is distributed throughout the cab from 14 vents.

Ergonomic operator's seat: The adjustable seat and joystick console move independently to accommodate the operator. The seat has 12 different adjustments plus a seat belt for the operator's comfort and safety.

Sound Level

Sound level in cab according to ISO 6396		
L _{pA}	dB	72
External sound level according to ISO 6395 and EU Noise Directive (2000/14/EC) and 474-1:2006 +A1:2009		
L _{WA}	dB	110

Specifications

GROUND PRESSURE

Description		Shoe width		Operating weight		Ground pressure		Overall width		Operating weight		Ground pressure		Overall width		
		mm	in	kg	lb	kPa	psi	mm	ft in	kg	lb	kPa	psi	mm	ft in	
EC750D																
Boom 6,6 m (21'8"), Arm 2,9 m (9'6"), Bucket 4.200 kg (9.259 lb)								Boom 7,1 m (23'4"), Arm 2,9 m (9'6"), Bucket 4.200 kg (9.259 lb)								
Counterweight 12.700 kg (27.999 lb)								Counterweight 12.700 kg (27.999 lb)								
Double grouser	650		26		72.900		160.717		105,9		15,4		4.185		13'9"	
	750		30		73.600		162.260		92,7		13,4		4.190		13'9"	
	900		36		74.700		164.685		78,4		11,4		4.340		14'3"	
EC750D																
Boom 7,7 m (25'3"), Arm 2,9 m (9'6"), Bucket 3.500 kg (7.716 lb)								Boom 7,7 m (25'3"), Arm 3,55 m (11'8"), Bucket 3.500 kg (7.716 lb)								
Counterweight 12.700 kg (27.999 lb)								Counterweight 12.700 kg (27.999 lb)								
Double grouser	650		26		72.500		159.835		105,4		15,3		4.185		13'9"	
	750		30		73.200		161.378		92,2		13,4		4.190		13'9"	
	900		36		74.300		163.803		78,0		11,3		4.340		14'3"	

BUCKET SELECTION GUIDE

Bucket type		Capacity		Cutting width		Tip radius		Weight		Teeth	EC750D			
											6,6 m (21'6") boom	7.1 m (23'4") boom	7.7 m (25'3") boom	
		650 mm (26") shoe, 12.700 kg (27.999 lb) counterweight										2,9 m (9'6")	2,9 m (9'6")	2,9 m (9'6")
		m ³	yd ³	mm	ft in	mm	ft in	kg	lb	EA				
Direct fit Buckets (V4)	General purpose	3,3	4,3	1.720	5'8"	2.177	7'2"	3.280	7.231	5	C	x	C	C
		4,0	5,2	2.000	6'7"	2.177	7'2"	3.690	8.135	5	C	C	C	C
		4,4	5,8	2.150	7'1"	2.177	7'2"	3.986	8.788	5	C	C	C	B
		4,65	6,1	2.250	7'5"	2.177	7'2"	3.986	8.788	5	C	C	C	B
		4,85	6,3	2.330	7'8"	2.177	7'2"	4.099	9.037	5	C	B	B	B
	Heavy duty	5,16	6,7	2.450	8'0"	2.177	7'2"	4.311	9.504	6	C	B	B	A
		3,3	4,3	1.720	5'8"	2.177	7'2"	3.666	8.082	4	D	D	D	D
		4,0	5,2	2.000	6'7"	2.177	7'2"	4.125	9.094	5	D	D	D	C
		4,4	5,8	2.150	7'1"	2.177	7'2"	4.324	9.533	5	D	D	C	B
		4,65	6,1	2.250	7'5"	2.177	7'2"	4.439	9.786	5	D	C	B	B
Direct fit Buckets (V1) *China only	Heavy duty	4,85	6,3	2.330	7'8"	2.177	7'2"	4.590	10.119	5	D	B	B	A
		5,16	6,7	2.450	8'0"	2.177	7'2"	4.832	10.653	6	C	B	B	A
		3,3	4,3	2.100	6'11"	2.158	7'1"	3.746	8.259	5	D	x	D	D
		3,7	4,8	2.300	7'7"	2.232	7'4"	3.971	8.755	5	D	x	D	D
		4,0	5,2	2.000	6'7"	2.219	7'3"	4.616	10.177	5	D	x	D	B
	4,6	6,0	2.240	7'4"	2.219	7'3"	4.969	10.955	5	D	x	B	A	

Please consult with your Volvo dealer for the proper match of buckets and attachments to suit the application.

The recommendations are given as a guide only, based on typical operation conditions.

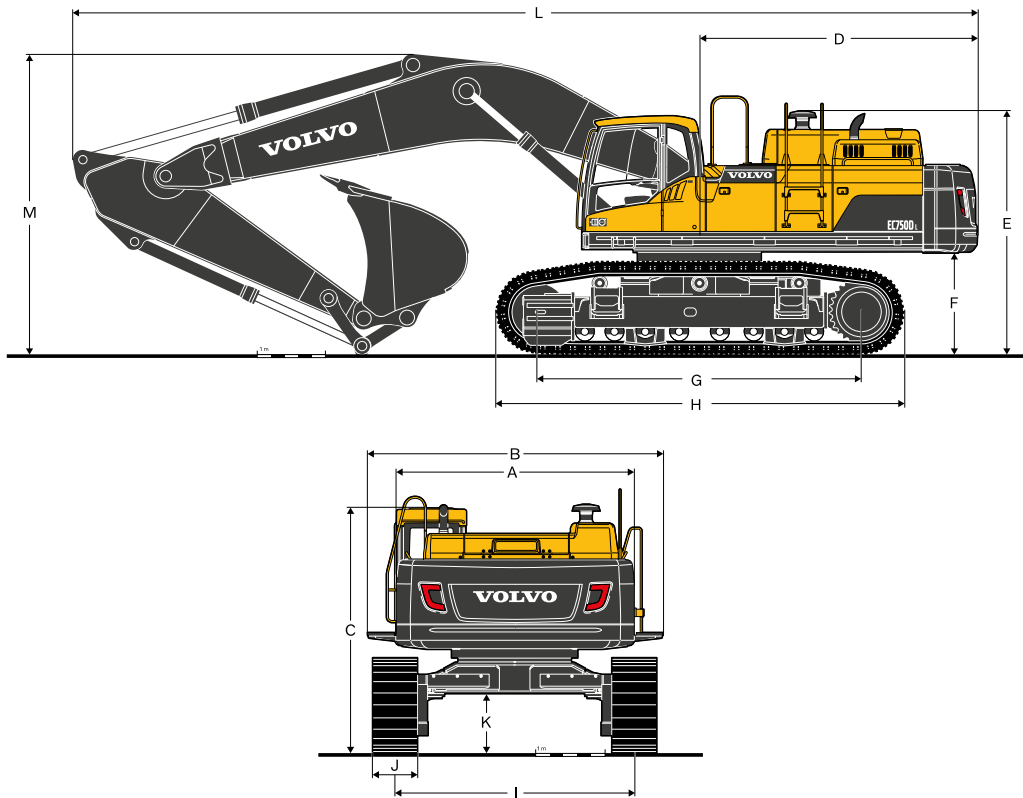
Bucket capacity based on ISO 7451, heaped material with a 1:1 angle of repose.

X : Not recommended

Maximum material density

A	1.200~1.300 kg/m ³	2.000 ~ 2.200 lb/yd ³	Coal, Caliche, Shale
B	1.400~1.600 kg/m ³	2.300 ~ 2.700 lb/yd ³	Wet earth and clay, Limestone, Sandstone
C	1.700~1.800 kg/m ³	2.800 ~ 3.100 lb/yd ³	Granite, Wet sand, Well blasted rock
D	1.900 kg/m ³ ~	3.200 ~ lb/yd ³ ~	Wet mud, Iron ore

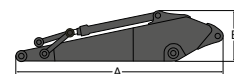
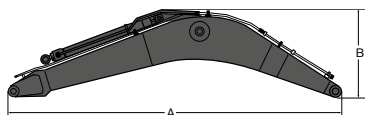
Specifications



DIMENSIONS

Description		Unit		EC750D					
				6,6 (21'8")		7,1 (23'4")		7,7 (25'3")	
Boom		m (ft in)		6,6 (21'8")		7,1 (23'4")		7,7 (25'3")	
Arm		m (ft in)		2,9 m (9'6")		2,9 m (9'6")		3,55 m (11'8")	
A	Overall width of upper structure	mm	ft in	3.420	11'3"	3.420	11'3"	3.420	11'3"
B	Overall width	mm	ft in	4.252	13'11"	4.252	13'11"	4.252	13'11"
C	Overall height of cab	mm	ft in	3.520	11'7"	3.520	11'7"	3.520	11'7"
D	Tail slew radius	mm	ft in	4.140	13'7"	4.140	13'7"	4.140	13'7"
E	Overall height of air cleaner cap	mm	ft in	3.590	11'9"	3.590	11'9"	3.590	11'9"
	Overall height of engine hood	mm	ft in	3.310	10'10"	3.310	10'10"	3.310	10'10"
F	Counterweight clearance*	mm	ft in	1.507	4'11"	1.507	4'11"	1.507	4'11"
G	Tumbler length	mm	ft in	4.750	15'7"	4.750	15'7"	4.750	15'7"
H	Track length	mm	ft in	5.990	19'8"	5.990	19'8"	5.990	19'8"
I	Track gauge (extended)	mm	ft in	3.440	11'3"	3.440	11'3"	3.440	11'3"
	Track gauge (retracted)	mm	ft in	2.750	9'0"	2.750	9'0"	2.750	9'0"
J	Shoe width	mm	ft in	650	2'2"	650	2'2"	650	2'2"
K	Min. ground clearance*	mm	ft in	858	2'10"	858	2'10"	858	2'10"
L	Overall length	mm	ft in	12.200	40'0"	12.700	41'8"	13.320	43'8"
M	Overall height of boom	mm	ft in	4.855	15'11"	4.800	15'9"	4.660	15'3"

* With shoe grouser



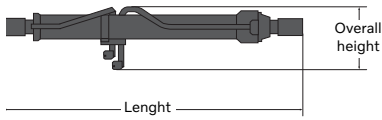
Description	Unit	EC750D						Description	Unit	EC750D			
		6,6 (21'8")		7,1 (23'4")		7,7 (25'3")				2,9 m (9'6")		3,55 m (11'8")	
Boom	m	6,6 (21'8")		7,1 (23'4")		7,7 (25'3")		Arm	m	2,9 m (9'6")		3,55 m (11'8")	
Length (A)	mm (ft in)	6.940	22'9"	7.440	24'5"	8.040	26'5"	Length (A)	mm (ft in)	4.280	14'1"	4.960	16'3"
Height (B)	mm (ft in)	2.530	8'4"	2.430	8'0"	2.210	7'3"	Height (B)	mm (ft in)	1.530	5'0"	1.410	4'8"
Width	mm (ft in)	1.100	3'7"	1.100	3'7"	1.100	3'7"	Width	mm (ft in)	740	2'5"	740	2'5"
Weight	kg lb	7.130	15.719	7.380	16.270	7.450	16.424	Weight	kg lb	4.050	8.929	4.180	9.215

* Includes cylinder, piping and pin

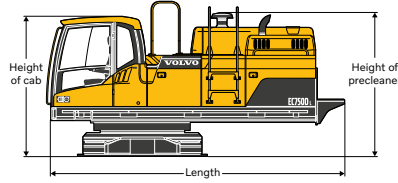
* Includes bucket cylinder, linkage and pin

DIMENSIONS

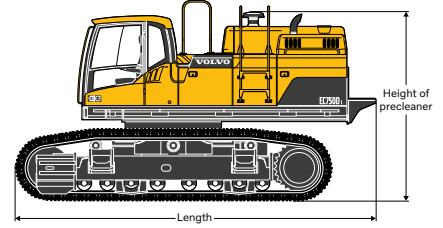
Cylinder



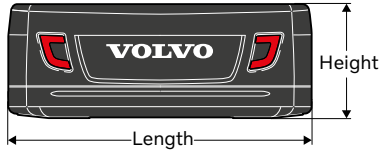
Cab



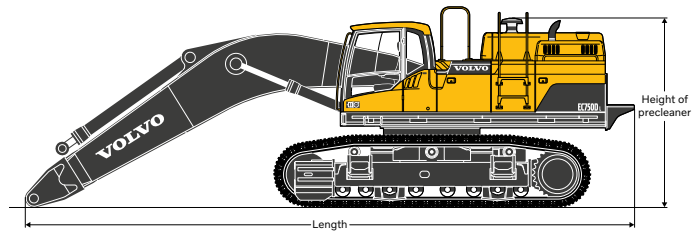
Cab with shoes



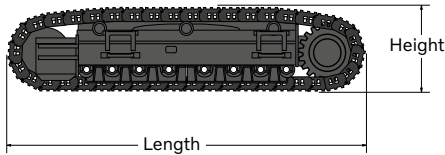
Counterweight



Cab with shoes and boom



Shoes



Cylinder

Length		Height		Width		Weight	
mm	ft in	mm	ft in	mm	ft in	kg	lb
2,525	8'3"	560	1'10"	370	1'3"	630 x 2 set = 1,260	1,389 x 2 set = 2,778

Counterweight

Length		Height		Width		Weight	
mm	ft in	mm	ft in	mm	ft in	kg	lb
3,420	11'3"	1,280	4'2"	800	2'7"	12,700	27,999

Shoes

Shoe width		Length		Height		Overall width		Weight / unit	
mm	in	mm	ft in	mm	ft in	mm	ft in	kg	lb
650	26	5,990	19'8"	1,375	4'6"	1,080	3'7"	10,600	23,369
750	30	5,990	19'8"	1,375	4'6"	1,080	3'7"	10,950	24,141
900	36	5,990	19'8"	1,375	4'6"	1,160	3'10"	11,500	25,353

Cab

Length		Height of cab		Height of precleaner		Width		Weight	
mm	ft in	mm	ft in	mm	ft in	mm	ft in	kg	lb
5,600	18'4"	2,655	8'9"	2,735	9'0"	3,430	11'3"	22,400	49,383

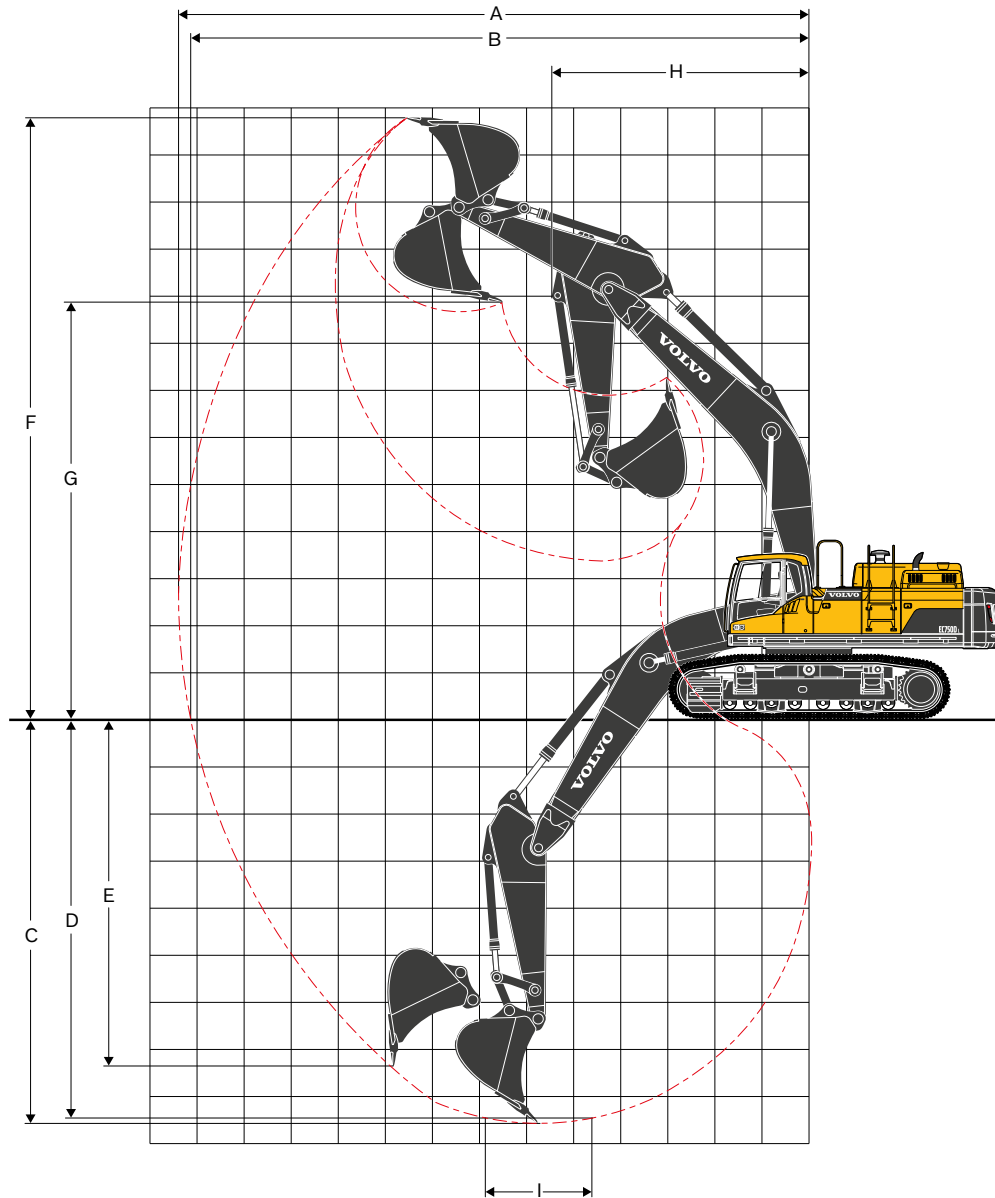
Cab with shoes

Shoe width		Length		Height of precleaner		Overall width (retracted)		Weight	
mm	in	mm	ft in	mm	ft in	mm	ft in	kg	lb
650	26	6,830	22'5"	3,590	11'9"	3,495	11'6"	43,600	96,121
750	30	6,830	22'5"	3,590	11'9"	3,500	11'6"	44,300	97,665
900	36	6,830	22'5"	3,590	11'9"	3,650	12'0"	45,400	100,090

Cab with shoes and boom

Boom		Shoe width		Length		Height of precleaner		Overall width (retracted)		Weight	
m	ft in	mm	in	mm	ft in	mm	ft in	mm	ft in	kg	lb
6,6	21'8"	650	26	10,240	33'7"	3,590	11'9"	3,495	11'6"	51,990	114,618
		750	30	10,240	33'7"	3,590	11'9"	3,500	11'6"	52,690	116,161
		900	36	10,240	33'7"	3,590	11'9"	3,650	12'0"	53,790	118,587
7,1	23'4"	650	26	10,770	35'4"	3,590	11'9"	3,495	11'6"	52,240	115,169
		750	30	10,770	35'4"	3,590	11'9"	3,500	11'6"	52,940	116,713
		900	36	10,770	35'4"	3,590	11'9"	3,650	12'0"	54,040	119,138
7,7	25'3"	650	26	11,400	37'5"	3,590	11'9"	3,495	11'6"	52,310	115,324
		750	30	11,400	37'5"	3,590	11'9"	3,500	11'6"	53,010	116,867
		900	36	11,400	37'5"	3,590	11'9"	3,650	12'0"	54,110	119,292

Specifications



WORKING RANGES

Description	Unit	EC750D							
Boom	m	6,6 (21'8")		7,1 (23'4")		7,7 (25'3")			
Arm	m	2,9 m (9'6")		2,9 m (9'6")		2,9 m (9'6")		3,55 m (11'8")	
A Max. digging reach	mm ft in	11.460	37'7"	11.990	39'4"	12.630	41'5"	13.200	43'4"
B Max. digging reach on ground	mm ft in	11.160	36'7"	11.710	38'5"	12.370	40'7"	12.940	42'5"
C Max. digging depth	mm ft in	7.210	23'8"	7.610	25'0"	7.780	25'6"	8.430	27'8"
D Max. digging depth (l = 2,44 m (8'0") level)	mm ft in	7.060	23'2"	7.460	24'6"	7.640	25'1"	8.300	27'3"
E Max. vertical wall digging depth	mm ft in	5.650	18'6"	6.100	20'0"	6.830	22'5"	7.260	23'10"
F Max. cutting height	mm ft in	10.940	35'11"	11.400	37'5"	12.460	40'11"	12.630	41'5"
G Max. dumping height	mm ft in	7.000	23'0"	7.430	24'5"	8.380	27'6"	8.580	28'2"
H Min. front swing radius	mm ft in	5.130	16'10"	5.350	17'7"	5.460	17'11"	5.390	17'8"

DIGGING FORCES WITH DIRECT FIT BUCKET

Bucket radius		mm	in	2.215	87,2	2.215	87,2	2.150	84,6	2.150	84,6
Breakout force -bucket	SAE J1179	kN	lbf	325	73.063	325	73.063	301	67.667	301	67.667
	ISO 6015	kN	lbf	389	87.451	389	87.451	356	80.032	356	80.032
Tearout force -dipper arm	SAE J1179	kN	lbf	314	70.590	314	70.590	316	71.040	278	62.497
	ISO 6015	kN	lbf	326	73.288	326	73.288	332	74.637	290	65.195
Rotation angle, bucket			°	174		174		174		174	

LIFTING CAPACITY EC750D

Lifting capacity at the arm end without bucket.

	Lifting hook related		4,5 m / 15 ft		6,0 m / 20 ft		7,5 m / 25 ft		9,0 m / 29,5 ft		10,5 m / 34,4 ft		Max. reach		
			Along	Across	Along	Across	Along	Across	Along	Across	Along	Across	Along	Across	
Boom: 6,6 m 21'8"	9,0 m	kg											*15.720	*15.720	6,7 m
	29,5 ft	lb											*34.657	*34.657	22,0 ft
	7,5 m	kg					*16.950	*16.950					*14.600	*14.600	7,8 m
	25 ft	lb					*37.368	*37.368					*32.187	*32.187	25,6 ft
	6,0 m	kg			*19.480	*19.480	*17.360	*17.360					*14.250	*14.250	8,6 m
	20 ft	lb			*42.946	*42.946	*38.272	*38.272					*31.416	*31.416	28,2 ft
	4,5 m	kg	*28.900	*28.900	*21.940	*21.940	*18.480	*18.240	*16.120	14.590			*14.410	14.390	9,1 m
	15 ft	lb	*63.714	*63.714	*48.369	*48.369	*40.741	*40.212	*35.538	32.165			*31.769	31.724	29,9 ft
	3,0 m	kg			*24.440	*24.140	*19.740	18.830	*17.000	14.280			*15.020	13.640	9,3 m
	10 ft	lb			*53.881	*53.220	*43.519	41.513	*37.479	31.482			*33.113	30.071	30,5 ft
	1,5 m	kg	*32.950	*32.950	*26.110	25.290	*20.670	18.230	*17.230	13.990			*16.180	13.510	9,2 m
	5 ft	lb	*72.642	*72.642	*57.563	55.755	*45.569	40.190	*37.986	30.843			*35.671	29.784	30,2 ft
	0 m	kg	*35.300	*35.300	*26.450	24.720	*20.840	17.850					*16.950	14.030	8,9 m
	0 ft	lb	*77.823	*77.823	*58.312	54.498	*45.944	39.352					*37.368	30.931	29,2 ft
	Shoe: 650 mm 26 in CWT: 12.700 kg 28.000 lb	-1,5 m	kg	*32.850	*32.850	*25.280	24.580	*19.800	17.770					*16.990	15.410
-5 ft		lb	*72.422	*72.422	*55.733	54.190	*43.651	39.176					*37.456	33.973	27,2 ft
-3,0 m		kg	*28.440	*28.440	*22.150	*22.150							*16.590	*16.590	7,4 m
-10 ft		lb	*62.699	*62.699	*48.832	*48.832							*36.575	*36.575	24,3 ft
-4,5 m		kg	*20.640	*20.640									*14.760	*14.760	6,0 m
-15 ft	lb	*45.503	*45.503									*32.540	*32.540	19,7 ft	
Boom: 7,1 m 23'4"	9,0 m	kg											*15.430	*15.430	7,4 m
	29,5 ft	lb											*34.017	*34.017	24,3 ft
	7,5 m	kg					*15.840	*15.840					*14.540	*14.540	8,5 m
	25 ft	lb					*34.921	*34.921					*32.055	*32.055	27,9 ft
	6,0 m	kg					*16.580	*16.580	*15.230	14.730			*14.250	14.240	9,2 m
	20 ft	lb					*36.553	*36.553	*33.576	32.474			*31.416	31.394	30,2 ft
	4,5 m	kg			*21.630	*21.630	*17.790	*17.790	*15.620	14.420			*14.410	12.950	9,6 m
	15 ft	lb			*47.686	*47.686	*39.220	*39.220	*34.436	31.791			*31.769	28.550	31,5 ft
	3,0 m	kg			*23.980	*23.980	*19.040	18.400	*16.170	14.020			*14.990	12.310	9,8 m
	10 ft	lb			*52.867	*52.867	*41.976	40.565	*35.649	30.909			*33.047	27.139	32,2 ft
	1,5 m	kg			*25.350	24.560	*19.910	17.770	*16.530	13.670			*15.180	12.190	9,7 m
	5 ft	lb			*55.887	54.145	*43.894	39.176	*36.442	30.137			*33.466	26.874	31,8 ft
	0 m	kg	*27.230	*27.230	*25.450	24.050	*20.080	17.380	*16.350	13.470			*15.270	12.590	9,5 m
	0 ft	lb	*60.032	*60.032	*56.108	53.021	*44.269	38.316	*36.046	29.696			*33.665	27.756	31,2 ft
	Shoe: 650 mm 26 in CWT: 12.700 kg 28.000 lb	-1,5 m	kg	*30.940	*30.940	*24.290	23.960	*19.270	17.270					*15.240	13.680
-5 ft		lb	*68.211	*68.211	*53.550	52.823	*42.483	38.074					*33.598	30.159	29,2 ft
-3,0 m		kg	*27.090	*27.090	*21.640	*21.640	*16.850	*16.850					*14.860	*14.860	8,1 m
-10 ft		lb	*59.723	*59.723	*47.708	*47.708	*37.148	*37.148					*32.761	*32.761	26,6 ft
-4,5 m		kg	*20.880	*20.880	*16.430	*16.430							*13.490	*13.490	6,8 m
-15 ft	lb	*46.032	*46.032	*36.222	*36.222							*29.740	*29.740	22,3 ft	
Boom: 7,7 m 25'3"	10,5 m	kg											*16.980	*16.980	6,8 m
	34,4 ft	lb											*37.434	*37.434	22,3 ft
	9,0 m	kg					*15.660	*15.660					*15.490	*15.490	8,2 m
	29,5 ft	lb					*34.524	*34.524					*34.150	*34.150	26,9 ft
	7,5 m	kg					*15.940	*15.940	*14.820	14.580			*14.710	14.200	9,2 m
	25 ft	lb					*35.142	*35.142	*32.672	32.143			*32.430	31.306	30,2 ft
	6,0 m	kg			*20.130	*20.130	*16.910	*16.910	*15.040	14.590			*14.420	12.440	9,9 m
	20 ft	lb			*44.379	*44.379	*37.280	*37.280	*33.157	32.165			*31.791	27.425	32,5 ft
	4,5 m	kg			*22.670	*22.670	*18.180	*17.900	*15.610	14.160			*14.230	11.440	10,2 m
	15 ft	lb			*49.979	*49.979	*40.080	*39.463	*34.414	31.217			*31.372	25.221	33,5 ft
	3,0 m	kg			*24.740	*24.340	*19.350	17.860	*16.190	13.700			*14.140	10.940	10,4 m
	10 ft	lb			*54.542	*53.660	*42.659	39.375	*35.693	30.203			*31.173	24.119	34,1 ft
	1,5 m	kg			*25.550	23.730	*20.030	17.250	*16.520	13.330			*14.070	10.850	10,4 m
	5 ft	lb			*56.328	52.316	*44.159	38.030	*36.420	29.388			*31.019	23.920	34,1 ft
	0 m	kg			*25.100	23.390	*19.990	16.900	*16.360	13.110			*13.960	11.810	10,1 m
0 ft	lb			*55.336	51.566	*44.070	37.258	*36.068	28.903			*30.776	24.648	33,1 ft	
Shoe: 650 mm 26 in CWT: 12.700 kg 28.000 lb	-1,5 m	kg	*27.460	*27.460	*23.610	*23.170	*19.070	16.830	*15.380	13.090			*13.720	12.020	9,6 m
	-5 ft	lb	*60.539	*60.539	*52.051	*51.081	*42.042	37.104	*33.907	28.858			*30.247	26.500	31,5 ft
	-3,0 m	kg	*25.020	*25.020	*20.970	*20.970	*16.970	*16.620					*13.120	*12.800	8,8 m
	-10 ft	lb	*55.160	*55.160	*46.231	*46.231	*37.412	*36.641					*28.925	*28.219	28,9 ft
	-4,5 m	kg	*19.620	*19.620	*16.580	*16.580	*12.410	*12.410					*11.670	*11.670	7,7 m
-15 ft	lb	*43.255	*43.255	*36.553	*36.553	*27.359	*27.359					*25.728	*25.728	25,3 ft	
Boom: 7,7 m 25'3"	10,5 m	kg					*14.590	*14.590					*13.600	*13.600	7,6 m
	34,4 ft	lb					*32.165	*32.165					*29.983	*29.983	24,9 ft
	9,0 m	kg											*12.490	*12.490	8,9 m
	29,5 ft	lb											*27.536	*27.536	29,2 ft
	7,5 m	kg					*14.930	*14.930	*13.860	13.860			*11.990	*11.990	9,8 m
	25 ft	lb					*32.915	*32.915	*30.556	30.556			*26.433	*26.433	32,2 ft
	6,0 m	kg			*18.820	*18.820	*16.020	*16.020	*14.310	14.020			*11.840	11.390	10,4 m
	20 ft	lb			*41.491	*41.491	*35.318	*35.318	*31.548	30.909			*26.103	25.111	34,1 ft
	4,5 m	kg			*21.490	*21.490	*17.430	*17.430	*15.030	14.300	*13.500	11.140	*11.990	10.530	10,8 m
	15 ft	lb			*47.377	*47.377	*38.427	*38.427	*33.135	31.526	*29.762	24.559	*26.433	23.215	35,4 ft
	3,0 m	kg			*23.900	*23.420	*18.790	18.070	*15.780	13.790	*13.780	10.880	*12.380	10.080	11,0 m
	10 ft	lb			*52.690	*51.632	*41.425	39.837	*34.789	30.402	*30.380	23.986	*27.223	22.223	36,1 ft
	1,5 m	kg			*25.290	23.950	*19.750	17.350	*16.310	13.350	*13.920	10.650	*12.890	9.980	10,9 m
	5 ft	lb			*55.755	52.801	*43.541	38.250	*35.957	29.432	*30.688	23.479	*23.418	22.002	35,8 ft
	0 m	kg			*25.440	23.380	*20.050	16.890	*16.430	13.040	*13.650	10.510	*13.220	10.220	10,7 m
0 ft	lb			*56.086	51.544	*44.203	37.236	*36.222	28.748	*30.093	23.171	*29.145	22.531	35,1 ft	
Shoe: 650 mm 26 in CWT: 12.700 kg 28.000 lb	-1,5 m	kg	*28.090	*28.090	*24.470	23.230	*19.540	16.690	*15.890	12.920			*13.130	10.890	10,2 m
	-5 ft	lb	*61.928	*61.928	*53.947	51.213	*43.078	36.795	*35.031	28.484			*28.947	24.008	33,5 ft
	-3,0 m	kg	*27.750	*27.750	*22.370	*21.830	*18.010	16.760	*14.250	13.040			*12.830	12.190	9,5 m
	-10 ft	lb	*61.178	*61.178	*49.317	*48.127	*39.705	36.949	*						

Specifications

LIFTING CAPACITY EC750D

Lifting capacity at the arm end without bucket.

	Lifting hook related		4,5 m / 15 ft		6,0 m / 20 ft		7,5 m / 25 ft		9,0 m / 29,5 ft		10,5 m / 34,4 ft		Max. reach		
			Along	Across	Along	Across	Along	Across	Along	Across	Along	Across	Along	Across	
Boom: 6,6 m 21'8"	9,0 m	kg											*15.720	*15.720	6,7 m
	29,5 ft	lb											*34.657	*34.657	22,0 ft
	7,5 m	kg					*16.950	*16.950					*14.600	*14.600	7,8 m
	25 ft	lb					*37.368	*37.368					*32.187	*32.187	25,6 ft
	6,0 m	kg			*19.480	*19.480	*17.360	*17.360					*14.250	*14.250	8,6 m
	20 ft	lb			*42.946	*42.946	*38.272	*38.272					*31.416	*31.416	28,2 ft
	4,5 m	kg	*28.900	*28.900	*21.940	*21.940	*18.480	*18.240	*16.120	14.720			*14.410	*14.410	9,1 m
	15 ft	lb	*63.714	*63.714	*48.369	*48.369	*40.741	*40.212	*35.538	32.452			*31.769	*31.769	29,9 ft
	3,0 m	kg			*24.440	*24.140	*19.740	19.000	*17.000	14.420			*15.020	13.770	9,3 m
	10 ft	lb			*53.881	*53.220	*43.519	41.888	*37.479	31.791			*33.113	30.358	30,5 ft
	1,5 m	kg	*32.950	*32.950	*26.110	25.530	*20.670	18.400	*17.230	14.130			*16.180	13.640	9,2 m
	5 ft	lb	*72.642	*72.642	*57.563	56.284	*45.569	40.565	*37.986	31.151			*35.671	30.071	30,2 ft
	0 m	kg	*35.300	*35.300	*26.450	24.960	*20.840	18.020					*16.950	14.160	8,9 m
	0 ft	lb	*77.823	*77.823	*58.312	55.027	*45.944	39.727					*37.368	31.217	29,2 ft
	12.700 kg	kg	*32.850	*32.850	*25.280	24.820	*19.800	17.940					*16.990	15.560	8,3 m
28.000 lb	lb	*72.422	*72.422	*55.733	54.719	*43.651	39.551					*37.456	34.304	27,2 ft	
	kg	*28.440	*28.440	*22.150	*22.150							*16.590	*16.590	7,4 m	
	lb	*62.699	*62.699	*48.832	*48.832							*36.575	*36.575	24,3 ft	
	kg	*20.640	*20.640									*14.760	*14.760	6,0 m	
	lb	*45.503	*45.503									*32.540	*32.540	19,7 ft	
Boom: 7,1 m 23'4"	9,0 m	kg											*15.430	*15.430	7,4 m
	29,5 ft	lb											*34.017	*34.017	24,3 ft
	7,5 m	kg					*15.840	*15.840					*14.540	*14.540	8,5 m
	25 ft	lb					*34.921	*34.921					*32.055	*32.055	27,9 ft
	6,0 m	kg					*16.580	*16.580	*15.230	14.870			*14.250	*14.250	9,2 m
	20 ft	lb					*36.553	*36.553	*33.576	32.783			*31.416	*31.416	30,2 ft
	4,5 m	kg			*21.630	*21.630	*17.790	*17.790	*15.620	14.560			*14.410	13.070	9,6 m
	15 ft	lb			*47.686	*47.686	*39.220	*39.220	*34.436	32.099			*31.769	28.814	31,5 ft
	3,0 m	kg			*23.980	*23.980	*19.040	18.580	*16.170	14.160			*14.990	12.430	9,8 m
	10 ft	lb			*52.867	*52.867	*41.976	40.962	*35.649	31.217			*33.047	27.403	32,2 ft
	1,5 m	kg			*25.350	24.790	*19.910	17.940	*16.530	13.810			*15.180	12.310	9,7 m
	5 ft	lb			*55.887	54.653	*43.894	39.551	*36.442	30.446			*33.466	27.139	31,8 ft
	0 m	kg	*27.230	*27.230	*25.450	24.290	*20.080	17.550	*16.350	13.600			*15.270	12.720	9,5 m
	0 ft	lb	*60.032	*60.032	*56.108	53.550	*44.269	38.691	*36.046	29.983			*33.665	28.043	31,2 ft
	12.700 kg	kg	*30.940	*30.940	*24.290	24.190	*19.270	17.450					*15.240	13.820	8,9 m
28.000 lb	lb	*68.211	*68.211	*53.550	53.330	*42.483	38.471					*33.598	30.468	29,2 ft	
	kg	*27.090	*27.090	*21.640	*21.640	*16.850	*16.850					*14.860	*14.860	8,1 m	
	lb	*59.723	*59.723	*47.708	*47.708	*37.148	*37.148					*32.761	*32.761	26,6 ft	
	kg	*20.880	*20.880	*16.430	*16.430							*13.490	*13.490	6,8 m	
	lb	*46.032	*46.032	*36.222	*36.222							*29.740	*29.740	22,3 ft	
Boom: 7,7 m 25'3"	10,5 m	kg											*16.980	*16.980	6,8 m
	34,4 ft	lb											*37.434	*37.434	22,3 ft
	9,0 m	kg					*15.660	*15.660					*15.490	*15.490	8,2 m
	29,5 ft	lb					*34.524	*34.524					*34.150	*34.150	26,9 ft
	7,5 m	kg					*15.940	*15.940	*14.820	14.580			*14.710	14.340	9,2 m
	25 ft	lb					*35.142	*35.142	*32.672	*32.143			*32.430	31.614	30,2 ft
	6,0 m	kg			*20.130	*20.130	*16.910	*16.910	*15.040	14.720			*14.420	12.570	9,9 m
	20 ft	lb			*44.379	*44.379	*37.280	*37.280	*33.157	32.452			*31.791	27.712	32,5 ft
	4,5 m	kg			*22.670	*22.670	*18.180	*17.900	*15.610	14.290			*14.230	11.560	10,3 m
	15 ft	lb			*49.979	*49.979	*40.080	*39.463	*34.414	31.504			*31.372	25.485	33,8 ft
	3,0 m	kg			*24.740	*24.340	*19.350	18.040	*16.190	13.840			*14.140	11.050	10,4 m
	10 ft	lb			*54.542	*53.660	*42.659	39.771	*35.693	30.512			*31.173	24.361	34,1 ft
	1,5 m	kg			*25.550	23.970	*20.030	17.420	*16.520	13.470			*14.070	10.960	10,4 m
	5 ft	lb			*56.328	52.845	*44.159	38.404	*36.420	29.696			*31.019	24.163	34,1 ft
	0 m	kg			*25.100	23.630	*19.990	17.080	*16.360	13.250			*13.960	11.290	10,1 m
0 ft	lb			*55.336	52.095	*44.070	37.655	*36.068	29.211			*30.776	24.890	33,1 ft	
12.700 kg	kg	*27.460	*27.460	*23.610	*23.170	*19.070	17.000	*15.380	13.230			*13.720	12.150	9,6 m	
28.000 lb	lb	*60.539	*60.539	*52.051	*51.081	*42.042	37.479	*33.907	29.167			*30.247	26.786	31,5 ft	
	kg	*25.020	*25.020	*20.970	*20.970	*16.970	*16.620					*13.120	*12.800	8,8 m	
	lb	*55.160	*55.160	*46.231	*46.231	*37.412	*36.641					*28.925	*28.219	28,9 ft	
	kg	*19.620	*19.620	*16.580	*16.580	*12.410	*12.410					*11.670	*11.670	7,7 m	
	lb	*43.255	*43.255	*36.553	*36.553	*27.359	*27.359					*25.728	*25.728	25,3 ft	
Boom: 7,7 m 25'3"	10,5 m	kg					*14.590	*14.590					*13.600	*13.600	7,6 m
	34,4 ft	lb					*32.165	*32.165					*29.983	*29.983	24,9 ft
	9,0 m	kg											*12.490	*12.490	8,9 m
	29,5 ft	lb											*27.536	*27.536	29,2 ft
	7,5 m	kg					*14.970	*14.970	*13.890	13.890			*11.990	*11.990	9,8 m
	25 ft	lb					*33.003	*33.003	*30.622	*30.622			*26.433	*26.433	32,2 ft
	6,0 m	kg			*18.860	*18.860	*16.060	*16.060	*14.350	14.020			*11.840	11.500	10,5 m
	20 ft	lb			*41.579	*41.579	*35.406	*35.406	*31.636	*30.909			*26.103	25.353	34,4 ft
	4,5 m	kg			*21.520	*21.520	*17.470	*17.470	*15.070	14.430	*13.540	11.250	*11.990	10.640	10,8 m
	15 ft	lb			*47.443	*47.443	*38.515	*38.515	*33.224	31.813	*29.851	24.802	*26.433	23.457	35,4 ft
	3,55 m	kg			*23.930	*23.420	*18.830	18.240	*15.810	13.920	*13.820	11.000	*12.380	10.190	11,0 m
	11'8"	lb			*52.757	*51.632	*41.513	40.212	*34.855	30.688	*30.468	24.251	*27.293	22.465	36,1 ft
	1,5 m	kg			*25.320	24.190	*19.780	17.520	*16.350	13.480	*13.950	10.760	*12.890	10.090	11,0 m
	5 ft	lb			*55.821	53.330	*43.607	38.625	*36.046	29.718	*30.754	23.722	*28.418	22.245	36,1 ft
	0 m	kg			*25.470	23.620	*20.080	17.060	*16.470	13.180	*13.680	10.620	*13.260	10.330	10,7 m
0 ft	lb			*56.152	52.073	*44.269	37.611	*36.310	29.057	*30.159	23.413	*29.233	22.774	35,1 ft	
12.700 kg	kg	*28.090	*28.090	*24.500	23.460	*19.570	16.870	*15.930	13.060			*13.170	11.000	10,2 m	
28.000 lb	lb	*61.928	*61.928	*54.013	51.720	*43.144	37.192	*35.120	28.792			*29.035	24.251	33,5 ft	
	kg	*27.790	*27.790	*22.410	*21.830	*18.040	16.940	*14.290	13.170			*12.860	12.310	9,5 m	
	lb	*61.266	*61.266	*49.406	*48.127	*39.771	37.346	*31.504	29.035			*28.351	27.139	31,2 ft	
	kg	*22.960	*22.960	*18.840	*18.840	*14.910	*14.910								

LIFTING CAPACITY EC750D

Lifting capacity at the arm end without bucket.

	Lifting hook related		4,5 m / 15 ft		6,0 m / 20 ft		7,5 m / 25 ft		9,0 m / 29,5 ft		10,5 m / 34,4 ft		Max. reach				
			Along	Across	Along	Across	Along	Across	Along	Across	Along	Across	Along	Across			
Boom: 6,6 m 21'8"	9,0 m	kg											*15.720	*15.720	6,7 m		
	29,5 ft	lb											*34.657	*34.657	22,0 ft		
	7,5 m	kg					*16.950	*16.950					*14.600	*14.600	7,8 m		
	25 ft	lb					*37.368	*37.368					*32.187	*32.187	25,6 ft		
	6,0 m	kg			*19.480	*19.480	*17.360	*17.360					*14.250	*14.250	8,6 m		
	20 ft	lb			*42.946	*42.946	*38.272	*38.272					*31.416	*31.416	28,2 ft		
	4,5 m	kg	*28.900	*28.900	*21.940	*21.940	*18.480	*18.240	*16.120	14.930			*14.410	*14.410	9,1 m		
	15 ft	lb	*63.714	*63.714	*48.369	*48.369	*40.741	*40.212	*35.538	32.915			*31.769	*31.769	29,9 ft		
	3,0 m	kg			*24.440	*24.440	*19.740	19.260	*17.000	14.620			*15.020	13.970	9,3 m		
	10 ft	lb			*53.881	*53.881	*43.519	42.461	*37.479	32.232			*33.113	30.799	30,5 ft		
	Shoe: 900 mm	1,5 m	kg	*32.950	*32.950	*26.110	*25.770	*20.670	18.660	*17.230	14.330			*16.180	13.840	9,2 m	
	5 ft	lb	*72.642	*72.642	*57.563	*56.813	*45.569	41.138	*37.986	31.592			*35.671	30.512	30,2 ft		
	36 in	0 m	kg	*35.300	*35.300	*26.450	25.310	*20.840	18.280				*16.950	14.370	8,9 m		
	CWT: 12.700 kg 28.000 lb	0 ft	lb	*77.823	*77.823	*58.312	55.799	*45.944	40.300				*37.368	31.680	29,2 ft		
		-1,5 m	kg	*32.850	*32.850	*25.280	*24.920	*19.800	18.200				*16.990	15.790	8,3 m		
		-5 ft	lb	*72.422	*72.422	*55.733	*54.939	*43.651	40.124				*37.456	34.811	27,2 ft		
	-3,0 m	kg	*28.440	*28.440	*22.150	*22.150						*16.590	*16.590	7,4 m			
	-10 ft	lb	*62.699	*62.699	*48.832	*48.832						*36.575	*36.575	24,3 ft			
	-4,5 m	kg	*20.640	*20.640								*14.760	*14.760	6,0 m			
	-15 ft	lb	*45.503	*45.503								*32.540	*32.540	19,7 ft			
Boom: 7,1 m 23'4"	9,0 m	kg											*15.430	*15.430	7,4 m		
	29,5 ft	lb											*34.017	*34.017	24,3 ft		
	7,5 m	kg					*15.840	*15.840					*14.540	*14.540	8,5 m		
	25 ft	lb					*34.921	*34.921					*32.055	*32.055	27,9 ft		
	6,0 m	kg					*16.580	*16.580	*15.230	15.070			*14.250	*14.250	9,2 m		
	20 ft	lb					*36.553	*36.553	*33.576	33.224			*31.416	*31.416	30,2 ft		
	4,5 m	kg			*21.630	*21.630	*17.790	*17.790	*15.620	14.760			*14.410	13.260	9,6 m		
	15 ft	lb			*47.686	*47.686	*39.220	*39.220	*34.436	32.540			*31.769	29.233	31,5 ft		
	3,0 m	kg			*23.980	*23.980	*19.040	18.840	*16.170	14.370			*14.990	12.620	9,8 m		
	10 ft	lb			*52.867	*52.867	*41.976	41.535	*35.649	31.680			*33.047	27.822	32,2 ft		
	Shoe: 900 mm	1,5 m	kg			*25.350	25.150	*19.910	18.200	*16.530	14.020			*15.180	12.500	9,7 m	
	5 ft	lb			*55.887	55.446	*43.894	40.124	*36.442	30.909			*33.466	27.558	31,8 ft		
	36 in	0 m	kg	*27.230	*27.230	*25.450	24.640	*20.080	17.820	*16.350	13.810			*15.270	12.920	9,5 m	
	CWT: 12.700 kg 28.000 lb	0 ft	lb	*60.032	*60.032	*56.108	54.322	*44.269	39.286	*36.046	30.446			*33.665	28.484	31,2 ft	
		-1,5 m	kg	*30.940	*30.940	*24.290	*24.290	*19.270	17.710					*15.240	14.030	8,9 m	
		-5 ft	lb	*68.211	*68.211	*53.550	*53.550	*42.483	39.044					*33.598	30.931	29,2 ft	
	-3,0 m	kg	*27.090	*27.090	*21.640	*21.640	*16.850	*16.850					*14.860	*14.860	8,1 m		
	-10 ft	lb	*59.723	*59.723	*47.708	*47.708	*37.148	*37.148					*32.761	*32.761	26,6 ft		
	-4,5 m	kg	*20.880	*20.880	*16.430	*16.430							*13.490	*13.490	6,8 m		
	-15 ft	lb	*46.032	*46.032	*36.222	*36.222							*29.740	*29.740	22,3 ft		
Boom: 7,7 m 25'3"	10,5 m	kg											*16.980	*16.980	6,8 m		
	34,4 ft	lb											*37.434	*37.434	22,3 ft		
	9,0 m	kg					*15.660	*15.660					*15.490	*15.490	8,2 m		
	29,5 ft	lb					*34.524	*34.524					*34.150	*34.150	26,9 ft		
	7,5 m	kg					*15.940	*15.940	*14.830	*14.580			*14.710	14.540	9,2 m		
	25 ft	lb					*35.142	*35.142	*32.695	*32.143			*32.430	32.055	30,2 ft		
	6,0 m	kg			*20.130	*20.130	*16.910	*16.910	*15.040	*14.790			*14.420	12.750	9,9 m		
	20 ft	lb			*44.379	*44.379	*37.280	*37.280	*33.157	*32.606			*31.791	28.109	32,5 ft		
	4,5 m	kg			*22.670	*22.670	*18.180	*17.900	*15.610	14.500			*14.230	11.730	10,3 m		
	15 ft	lb			*49.979	*49.979	*40.080	*39.463	*34.414	31.967			*31.372	25.860	33,8 ft		
	3,0 m	kg			*24.740	*24.340	*19.350	18.300	*16.190	14.050			*14.140	11.230	10,4 m		
	10 ft	lb			*54.542	*53.660	*42.659	40.345	*35.693	30.975			*31.173	24.758	34,1 ft		
	Shoe: 900 mm	1,5 m	kg			*25.550	24.320	*20.030	17.680	*16.520	13.670			*14.070	11.140	10,4 m	
	5 ft	lb			*56.328	53.616	*44.159	39.978	*36.420	30.137			*31.019	24.559	34,1 ft		
	36 in	0 m	kg			*25.100	23.980	*19.990	17.340	*16.360	13.450			*13.960	11.470	10,1 m	
	CWT: 12.700 kg 28.000 lb	0 ft	lb			*55.336	52.867	*44.070	38.228	*36.068	29.652			*30.776	25.287	33,1 ft	
	-1,5 m	kg	*27.460	*27.460	*23.610	*23.170	*19.070	17.260	*15.380	13.440			*13.720	12.340	9,6 m		
	-5 ft	lb	*60.539	*60.539	*52.051	*51.081	*42.042	38.052	*33.907	29.630			*30.247	27.205	31,5 ft		
	-3,0 m	kg	*25.020	*25.020	*20.970	*20.970	*16.970	*16.620					*13.120	*12.800	8,8 m		
	-10 ft	lb	*55.160	*55.160	*46.231	*46.231	*37.412	*36.641					*28.925	*28.219	28,9 ft		
	-4,5 m	kg	*19.620	*19.620	*16.580	*16.580	*12.410	*12.410					*11.670	*11.670	7,7 m		
	-15 ft	lb	*43.255	*43.255	*36.553	*36.553	*27.359	*27.359					*25.728	*25.728	25,3 ft		
Boom: 7,7 m 25'3"	10,5 m	kg					*14.590	*14.590					*13.600	*13.600	7,6 m		
	34,4 ft	lb					*32.165	*32.165					*29.983	*29.983	24,9 ft		
	9,0 m	kg											*12.490	*12.490	8,9 m		
	29,5 ft	lb											*27.536	*27.536	29,2 ft		
	7,5 m	kg					*14.970	*14.970	*13.890	*13.890			*11.990	*11.990	9,8 m		
	25 ft	lb					*33.003	*33.003	*30.622	*30.622			*26.433	*26.433	32,2 ft		
	6,0 m	kg			*18.860	*18.860	*16.060	*16.060	*14.350	*14.020			*11.840	11.670	10,5 m		
	20 ft	lb			*41.579	*41.579	*35.406	*35.406	*31.636	*30.909			*26.103	25.728	34,4 ft		
	4,5 m	kg			*21.520	*21.520	*17.470	*17.470	*15.070	14.640	*13.540	11.420		*11.990	10.800	10,8 m	
	15 ft	lb			*47.443	*47.443	*38.515	*38.515	*33.224	32.276	*29.851	25.177		*26.433	23.810	35,4 ft	
	3,55 m 11'8"	3,0 m	kg			*23.930	*23.420	*18.830	*18.890	*15.810	14.130	*13.820	11.170		*12.380	10.350	11,0 m
	10 ft	lb			*52.757	*51.632	*41.513	*40.543	*34.855	31.151	*30.468	24.626		*27.293	22.818	36,1 ft	
	Shoe: 900 mm	1,5 m	kg			*25.320	24.540	*19.780	17.780	*16.350	13.690	*13.950	10.930		*12.890	10.250	11,0 m
	5 ft	lb			*55.821	54.101	*43.607	39.198	*36.046	30.181	*30.754	24.096		*28.418	22.597	36,1 ft	
	36 in	0 m	kg			*25.470	23.970	*20.080	17.320	*16.470	13.390	*13.680	10.790		*13.260	10.500	10,7 m
	CWT: 12.700 kg 28.000 lb	0 ft	lb			*56.152	52.845	*44.269	38.184	*36.310	29.520	*30.159	23.788		*29.233	23.149	35,1 ft
	-1,5 m	kg	*28.090	*28.090	*24.500	23.820	*19.570	17.130	*15.930	13.270			*13.170	11.180	10,2 m		
	-5 ft	lb	*61.928	*61.928	*54.013	52.514	*43.144	37.765	*35.120	29.255			*29.035	24.648	33,5 ft		
	-3,0 m	kg	*27.790	*27.790	*22.410	*21.830	*18.040	17.200	*								

Equipment

STANDARD EQUIPMENT

Engine

Turbocharged, 4 stroke diesel engine with water cooling, direct injection and charged air cooler

Air filter with indicator

Air intake heater

Cyclone pre-cleaner

Electric engine shut-off

Fuel filter and water separator

Alternator, 80 A

Fuel filler pump, 100 lpm with automatic shut-off

Electric / Electronic control system

Contronics

Advanced mode control system

Self-diagnostic system

Machine status indication

Engine speed sensing power control

Automatic idling system

Safety stop/start function

Adjustable LCD color monitor

Master electrical disconnect switch

Engine restart prevention circuit

High-capacity halogen lights:

Cab-mounted 2

Frame-mounted 1

Boom-mounted 4

Batteries, 2 x 12 V / 210 Ah

Start motor, 28 V / 6.6 kW

Frame

Access way with handrail

Full height counterweight 12.700 kg (27.999 lb)

Tool storage area

Side walk-way

Under cover (heavy duty 4,5 mm / 0,18 in)

Punched metal anti-slip plates

Undercarriage

Mechanically retractable track gauge

Hydraulic track adjusters

Greased and sealed track link

Track Guard

Under cover (10 mm / 0,39 in)

Hydraulic system

Automatic sensing hydraulic system

Summation system

Boom priority

Arm priority

Swing priority

ECO mode fuel saving technology

Boom and arm regeneration valves

Swing anti-rebound valves

Boom and arm holding valves

Multi-stage filtering system

Cylinder cushioning

Cylinder contamination seals

Auxiliary hydraulic valve

Automatic two-speed travel motors

Hydraulic oil, ISO VG 46

STANDARD EQUIPMENT

Cab and interior

Silicon oil and rubber mounts with spring

Adjustable operator seat with heater and joystick control console

Control joysticks with semi-long

Heater & air-conditioner, automatic

Flexible antenna

Radio with CD player & MP3 player and USB

Hydraulic safety lock lever

Cab, all-weather sound suppressed, includes:

Cup holders

Door locks

Tinted glass

Floor mat

Horn

Large storage area

Pull-up type front window

Removable lower windshield

Seat belt

Safety glass

Sun screens, front, roof, rear

Windshield wiper with intermittent feature

Master key

Track shoes

Track shoes, 650 mm (2'2") with double grouser

Digging equipment

Boom: ME 6,6 m (21'8")

Arm: ME 2,9 m (9'6")

Manual centralized lubrication

OPTIONAL EQUIPMENT

Engine

Block heater: 240 V

Dual stage oil bath pre-cleaner

Diesel coolant heater, 10 kW

Water separator with heater

Extra water separator

Auto engine shutdown

Electric

Extra lights :

Cab-mounted 3 (front 2, rear 1)

Boom-mounted 4

Frame-mounted 1

Counterweight-mounted 1

Travel alarm

Anti-theft system

Rotating warning beacon

Frame

Full height counterweight:

12.700 kg (27.999 lb) removal type

Undercarriage

Full track guard

OPTIONAL EQUIPMENT

Hydraulic system

Hose rupture valve: boom, arm
Straight travel pedal
Bucket conflux
Boom float function with HRV
Boom float function without HRV
Hydraulic piping:
Work tool management system (up to 20 programmable memories)
Hammer & shear, 1 and 2 pump flow
Hammer & shear: variable flow and pressure pre-setting
Additional return filter
Slope & rotator
Grapple
Quick coupler piping
Volvo hydraulic quick coupler EQD FPL Eye 75t_C
Hydraulic oil, ISO VG 32, 68
Hydraulic oil, biodegradable 46
Hydraulic oil, longlife oil 32, 46, 68

OPTIONAL EQUIPMENT

Cab and interior

One-piece fixed front windshield
Fabric seat without heater
Fabric seat with heater and air suspension
Control joysticks with 4 switches each
Control joysticks with 3 switch & 1 proportional
Opening top hatch
Front rain shield
Falling object guard (FOG)
Frame-mounted
Cab-mounted
Cab-mounted falling object protective structure (FOPS)
Smoker kit (ashtray and lighter)
Safety net for front window
Sunlight protection, roof (steel)
Lower wiper with intermittent control
Cleaning air gun
Rear view camera
Side view camera
Specific key

Track shoes

750/900 mm (2'6"/2'11") track shoes with double grousers
--

Digging equipment

Boom: 7,1 m (23'4"), 7,7 m (25'3")
Arm: 2,9 m (9'6"), 3,55 m (11'8")

Service

Tool kit, daily maintenance
Tool kit, full scale
Special tool for retractable frame

SELECTION OF VOLVO OPTIONAL EQUIPMENT**Dual stage oil bath pre-cleaner****FOPS/FOG**
(Falling object protection system/Falling object guard)**Boom float****Bucket conflux****Side-view camera****One-piece fixed windshield**

Not all products are available in all markets. Under our policy of continuous improvement, we reserve the right to change specifications and design without prior notice. The illustrations do not necessarily show the standard version of the machine.

V O L V O