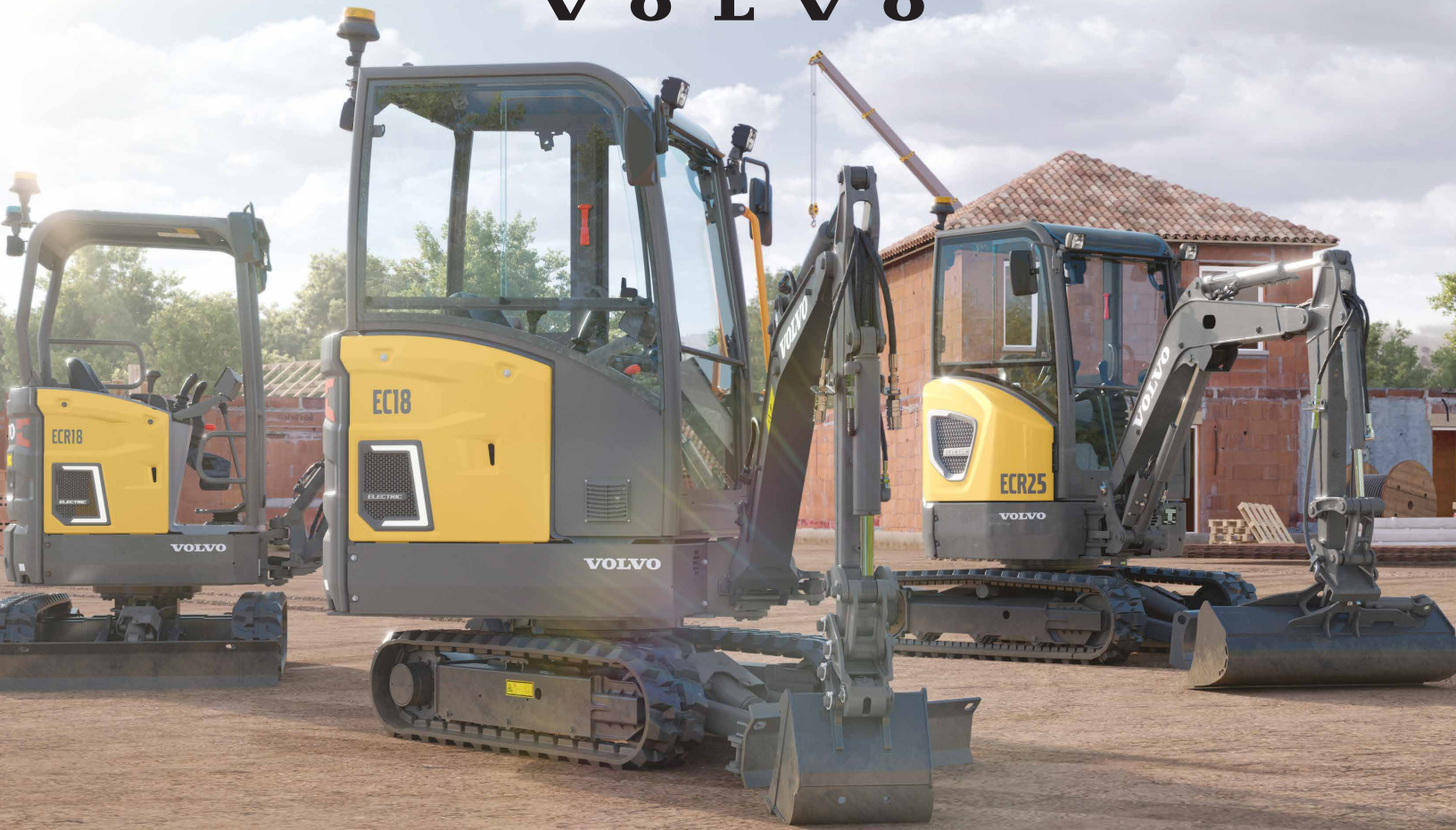


V O L V O



EC18 ELECTRIC

Volvo Electric Compact Crawler Excavator

- Experience the same performance levels but with **zero exhaust emissions**, so you can meet emissions targets while opening up all-new applications.
- **Reduce noise pollution and vibrations**, which aren't just disturbing but have an often-neglected effect on health.
- Get more work done at night, **reducing daytime congestion**.
- Realize **energy efficiency** way beyond its predecessor.

THE POWER YOU EXPECT - IN ELECTRIC FORM

**RESERVE YOURS
TODAY!**

- Equipped with lithium-ion batteries and one electric motor to power the hydraulics
- The batteries store enough electric energy to power the machine in applications like utility work, indoor demolition and landscaping
- Type 1 EV charging on 120V or 240V or fast charging with DC

EC18 ELECTRIC

BASIC SPECIFICATIONS

	Imperial	Metric
Operating weight	4,321 lbs	1,960 kg
Maximum digging depth (short/long arm)	7' 4" - 8' 0"	2,234 - 2,434 mm
Maximum dump height (short/long arm)	8' 0" - 8' 6"	2444 - 2588 mm
Travel speed, low / high	1.1 / 2.2 mph	1.8 / 3.5 km/h
Breakout force	2,900 lbf	12.9 kN
Tear out force (arm breakout force) (short/long arm)	1787 - 1562 lbf	7.95 - 6.95 kN
Overall width	3' 3" - 4' 5"	995 - 1,352 mm
Overall length (short/long arm)	11' 3" - 10' 10"	3,431 - 3,309 mm
Battery voltage	48 V	
Battery capacity (standard)	16 kWh	
Battery capacity (optional)	20 kWh	
Indicative runtime (depending on application)	4 to 6 hours	
Charging time Type 1 Level 1 110V	~ 12 h	
Charging time Type 1 Level 2 240V *	~ 6 h	

**It is recommended to charge on an NEMA 14-50 power outlet.*

