

V O L V O



Volvo Tracked Pavers 2.5-13 m 200 kW

# P8820DL ABG

Volvo Construction Equipment

# Go big

Experience the ultimate in paving productivity. With a high capacity hopper, high-performance Volvo engine and the ability to pave up to 13-meters wide, the P8820DL ABG is the big machine for the big jobs.

## Superb stability

Tracks measuring 325mm wide and 3 120mm long provide excellent surface contact. This combines with the strong frame and components to deliver outstanding machine stability. Furthermore, the Volvo automatic track tensioner ensures advanced directional stability across all paving jobs.



## Powerfully efficient

The premium Volvo engine is specifically tuned to the hydraulic system and combines high torque at low RPM for superior performance and efficiency. Further reduce fuel consumption with intelligent features such as adaptive ECO Mode, which matches engine output to jobsite requirements, giving you the power to perform.



## Configured for success

In addition to asphalt paving, you can prepare your paver to succeed in a variety of specialist applications thanks to a range of available configurations. Achieve the highest levels of compaction density behind the screed in activities such as working with Cement-Treated Base materials.



## Go long

The long hopper on the P8820DL ABG increases the distance between the front wall and push rollers to 2 649 mm. This provides enough dumping clearance even for extra-large trucks with longer overhangs to be able to feed the paver.





# UNLOCKING PRODUCTIVITY

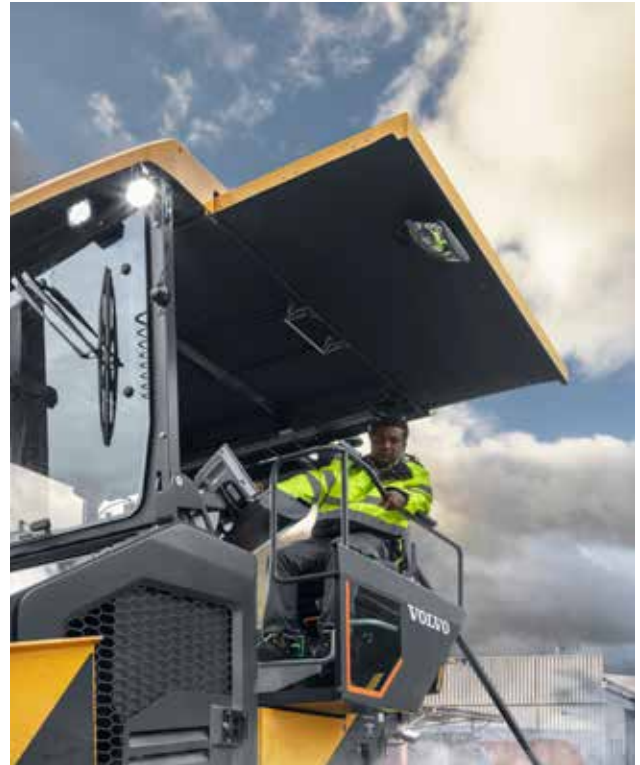
Take on large paving projects with ease in the P8820DL ABG, with a maximum paving width of 13-meters and paving thickness up to 300mm. A hopper capacity of 16.2t and large conveyor tunnel provide paving outputs of 1 100 tonnes per hour.

# Operator's choice

Volvo pavers are industry-renowned for providing the highest levels of operator comfort, and in the P8820DL ABG operators can enjoy comfortable, safe and productive working shifts with intuitive controls, excellent visibility, intelligent functions and spacious platform.

## Every angle in view

Operators experience unhampered visibility thanks to the flat engine hood design, smaller electrical boxes, glazed areas to both sides of the platform, extendable seat and near-field mirrors. Six standard work lights and optional lighting kits further boost safety when working at night. The home light function illuminates the platform for three minutes after the main switch is turned on or the ignition is turned off.



## Easy on the ears

Achieve high paving performance at remarkably low noise levels. By matching engine output to work requirements, the adaptive ECO Mode and optimized RPM reduce noise levels, benefitting the paving crew and local community alike. The sound insulated weather roof provides further noise reduction for operators.



# TAKE CONTROL

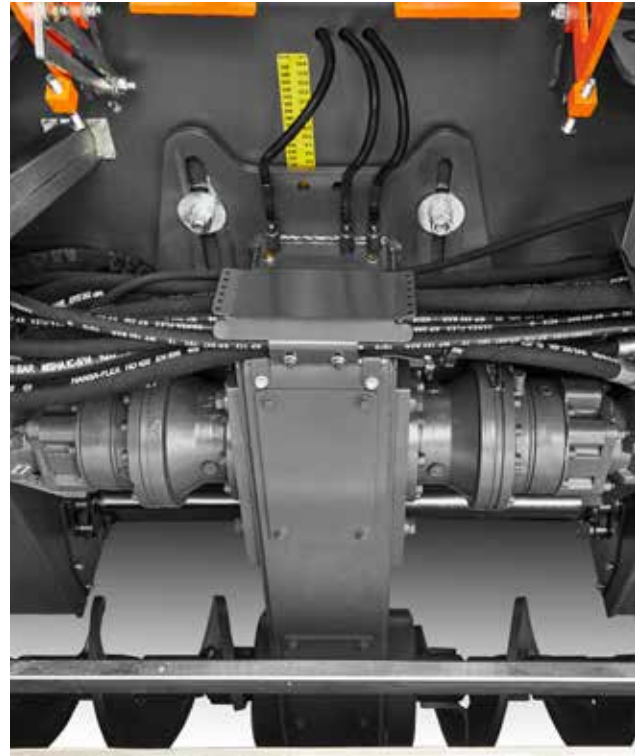
Take control with the Electronic Paver Management (EPM3) system. Backlit for nightshifts, all buttons are consolidated into the control system and arranged for ease of operation. EPM3 features integrated functions such as Settings Manager, which stores customized settings for individual projects to ensure consistent paving quality from job to job, and Service Interval Manager which alerts the operator to required or scheduled maintenance.

# Enduring quality

Rely on the P8820DL ABG for consistent paving results. Designed with a focus on quality and uptime the machine features increased auger height adjustment, track tensioning device and easy servicing. The result is a paver you can depend on to deliver unbeatable mat quality; shift after shift, day after day.

## Optimum material flow

Building on the success of the previous generation, the P8820DL ABG features an increased auger height adjustment range from 120mm to 200mm. This allows the paver to deliver optimum material flow in the auger channel for a wide range of layer thicknesses up to 300mm.



## On the right track

For increased uptime and lower operating costs, the undercarriage includes an automatic track tensioner with hydraulic operation unique to Volvo. This provides more precise and stable steering and reduced wear, while the durable track scrapers further contribute towards a smoother surface finish.



## Keep on paving

Get back to work in no time with quick and safe servicing. Improved service access to essential checkpoints via the wide-opening on top of the platform provides ease of maintenance, reduces downtime and minimizes operational costs.





# PAVE WITH CONFIDENCE

Ensure consistent high-quality results throughout the entirety of your projects thanks to the optional Volvo patented screed load device, which prevents start-off bumps when working at large paving widths. The screed tensioning device locks torsional stiffness across the length of the screed, ensuring a consistent angle of attack across the full screed width.

# Ultimate paving results

Paving a width up to 13-meters the P8820DL ABG is compatible with an extensive range of high-performance screeds, depending on your operational requirements and preferences. You can count on Volvo to deliver ultimate paving results.

## Screed excellence

For over two decades Volvo has been developing screeds which deliver superior paving results. The high-compaction Volvo screed with dual tamper system provides an outstanding level of pre-compaction and evenness, making it the optimum choice when working with all types of mix in road and airport construction.

## Manual screeds: a wider paving width

Built on decades of engineering excellence, Volvo screeds deliver the best pavement quality, uniformity and smoothness. With a paving width up to 13-meters, the P8820DL ABG can be equipped with a range of Volvo screeds able to handle a variety of materials, including manual MB and VDT screeds.

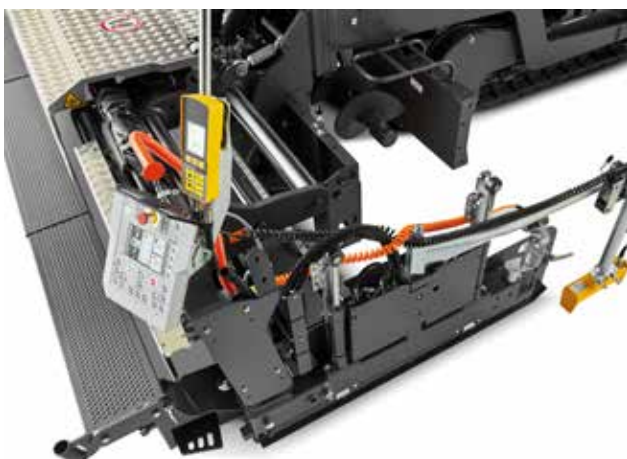


## Flexible Vario screeds

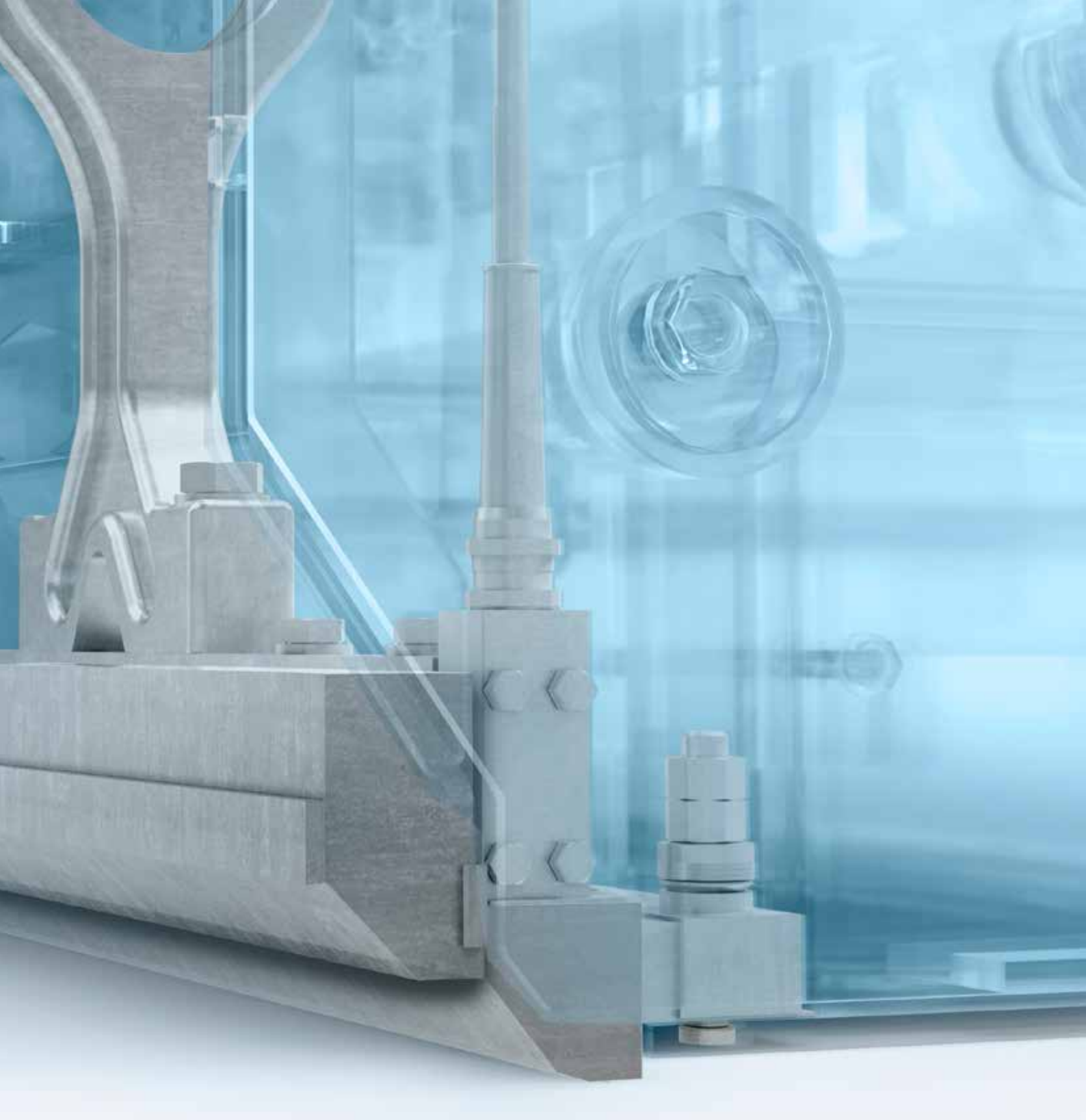
Featuring great stability and rigidity, Volvo Variomatic screeds have eight guide tubes – four on each hydraulic extension – contributing to a consistent and uniformly compacted smooth surface. Operators benefit from easy daily service with centralized lubrication points.

## Easy extension

Change screed extensions efficiently and safely and with no special tools required, thanks to the Volvo unique quick coupling system. Assemble a 7.5-meter screed including channel plates, guide plates and auger extensions in less than one hour.







# DURABLE TAMPER BARS

Fully hardened and easy to maintain, you can rely on the specially-designed Volvo tamper bars to perform when it comes to achieving material target density. Depending on application and condition, choose from the single or double tamper screeds to ensure a smooth, uniform surface.

# Large-scale partner

## Pave in comfort

- Intuitive EPM3, including Settings Manager
- Low noise levels
- Storage areas for screed/paving panels and tool box
- High-visibility steps and handrails

## Go big

- Pave up to 13m width and 300mm thickness
- 1 110 tonnes per hour
- 16.2 t hopper capacity
- Track length 3 120 mm, width 325 mm
- Long hopper: 2 649 mm dumping clearance
- Fuel efficient Volvo engine, featuring adaptive ECO power



## Faultless finish

- Increased auger height adjustment to 200 mm
- Cement-Treated Base compatible
- Screed Load (option)
- Automatic track tensioner



## See more, do more

- Flat engine hood
- Side glazed inserts & near-field mirrors
- Smaller electrical boxes for improved rear view
- Home light functionality
- Lighting kits

## Uptime

- Easy access to service points
- Service Interval Manager
- PSR telematics system for remote machine monitoring

## Screed technology

- Choice of Fixed or Vario screeds
- Durable, easy to maintain tamper bars
- Screed tensioning device
- Quick coupling system

# Volvo P8820DL ABG in detail

Engine		
Manufacturer		Volvo
Model		D8J
Fuel		Diesel
Output	kW	200
	hp	272
at engine speed	r/min	2 000
Fuel tank capacity	l	250
Exhaust emission		China 4
Paving		
Output ( theoretical)*	t/h	1 100
Mat thickness (max)	mm	300
Speed		
Paving (max)	m/min	20
Transport (max)	km/h	3.6
Conveyor		
Hopper capacity	t	16.2
Number of conveyors		2
Conveyor speed (max)	m/min	23
Auger		
Speed (max)	1/min	150
Diameter	mm	360
Electrical system		
Battery voltage	V	24
Weight**		
Tractor unit	kg	17 300
Max. allowable gradeability***		
Tractor unit + screed	%	25
Sound Level		
Driver's ear, according to ISO 6396 / ISO 11201		
LpA	dB	85
External, according to ISO 6395 / Directive 2000/14/EC		
LWA	dB	106
Vibration		
Hand-Arm vibration accord. to ISO 5349:2001	m/s <sup>2</sup>	<2.5
Whole Body vibration accord. to ISO 2631:1997	m/s <sup>2</sup>	<0.5

## Notes

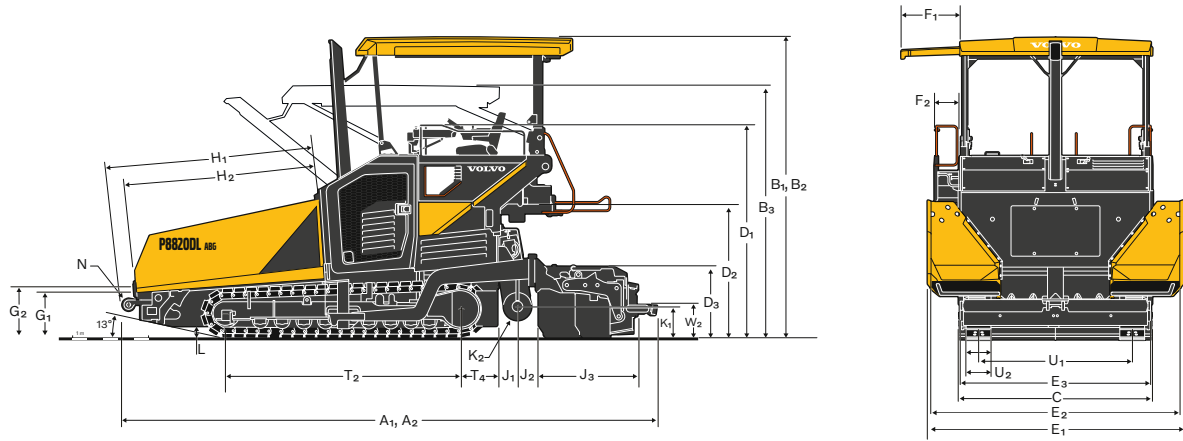
\*The actual paving output depends upon the mat thickness, the paving width and paving speed and will vary according to paving conditions prevailing on your jobsite.

Please approach us and we will be pleased to assist you in calculating the paving output for your particular paving project.

\*\*All weights are approx. weights without options. Weight of the tractor: without screed, with Front Flap hopper, with standard push roller, with generator, with fuel tank half full, inclusive 75kg driver.

\*\*\*Applies to screed VB78 2.5-5.0 m. When using extensions the max. allowable gradeability will be reduced.

# Specifications



## Dimensions

A <sub>1</sub>	Operating length	mm	7 067
A <sub>2</sub>	Shipping length	mm	7 067
B <sub>1</sub>	Operating height	mm	3 952
B <sub>2</sub>	Height weather roof	mm	3 952
B <sub>3</sub>	Shipping height	mm	3 078
C	Tractor width	mm	2 548
D <sub>1</sub>	Height railing	mm	2 185
D <sub>2</sub>	Deck height	mm	1 782
D <sub>3</sub>	Screed height	mm	937
E <sub>1</sub>	Outer hopper width	mm	3 342
E <sub>2</sub>	Inner hopper width	mm	3 260
E <sub>3</sub>	Width oscillating beam	mm	2 495
F <sub>1</sub>	Extension weather roof	mm	770
F <sub>2</sub>	Seat console extension	mm	320
G <sub>1</sub>	Inner loading height	mm	621
G <sub>2</sub>	Outer loading height	mm	749
H <sub>1</sub>	Hopper length to push roller	mm	2 649
H <sub>2</sub>	Hopper length	mm	2 453
J <sub>1</sub>	Distance rear wall auger centre	mm	275
J <sub>2</sub>	Distance auger centre screed	mm	339
J <sub>3</sub>	Screed depth	mm	1 297
K <sub>1</sub>	Auger height to ground (center)	mm	422
K <sub>2</sub>	Diameter auger	mm	360
L	Ground clearance	mm	166
N	Diameter push roller	mm	160
O	Conveyor width	mm	1 430
Basic screed width VB78+VB79		mm	2 500
Basic screed width VB88+VB89		mm	3 000
Extended screed width VB78+VB79		mm	5 000
Extended screed width VB88+VB89		mm	6 000
T <sub>2</sub>	Track length	mm	3 120
T <sub>4</sub>	Track distance to rear wall	mm	475
U <sub>1</sub>	Track gauge	mm	2 010
U <sub>2</sub>	Track pad width	mm	325
W <sub>1</sub>	Width of walkway	mm	250
W <sub>2</sub>	Height of walkway	mm	428

## OPERATING WEIGHTS<sup>1</sup> OF SCREEDS<sup>2</sup>

At working width		2.5 m	4 m	5 m	6 m	6.5 m	7 m	7.5 m	8 m	8.5 m	9 m	9 m (V)	10 m	11 m	12 m	12 m (V)	13 m
VB78 ETC	kg	-	-	3 600	-	5 222	-	5 802	6 342	-	6 923	-	-	-	-	-	-
VDT-V78 ETC	kg	-	-	3 850	-	5 592	-	6 192	6 832	-	7 433	-	-	-	-	-	-
VB 79 ETC	kg	-	-	4 050	-	5 672	-	6 252	6 792	-	7 373	-	-	-	-	-	-
VDT-V79 ETC	kg	-	-	4 300	-	6 042	-	6 642	7 282	-	7 883	-	-	-	-	-	-
VB88 ETC	kg	-	-	-	4 050	-	-	5 772	-	6 352	6 892	-	7 473	-	-	-	-
VDT-V88 ETC	kg	-	-	-	4 450	-	-	6 242	-	6 842	7 482	-	-	-	-	-	-
VB89 ETC	kg	-	-	-	4 500	-	-	6 222	-	6 802	7 342	-	-	-	-	-	-
VDT-V89 ETC	kg	-	-	-	4 800	-	-	6 642	-	7 242	7 882	-	-	-	-	-	-
MB 122 ETC	kg	2 242	-	-	4 456	-	-	6 076	-	-	6 828	7 454	8 050	8 575	9 070	9 679	9 878
VDT 121 ETC	kg	2 442	-	-	4 903	-	-	6 680	-	-	7 531	8 193	-	-	10 029	10 675	10 975

<sup>1</sup> Including auger Extensions, Channel Plates, End Gates etc., independent of Paver

<sup>2</sup>All screeds electrically heated

# Equipment

## STANDARD EQUIPMENT

### Engine

Volvo Diesel engine, China 4

### Drive

Electronic drive control

Lifetime lubricated crawler track rollers

Forged and hardened crawler track links

Automatic track tensioner

### Material Management

Heavy push rollers

Proportional conveyor sensors

Proportional ultrasonic sensor auger control

Four individual hydrostatic drives for conveyors and augers

Heavy duty auger

Auger quick lock system

Reversible direction of auger rotation

Hydraulic auger height adjustment

Reversible conveyor

Central lubrication

### Electrics and electronics

Electronic Paver Management (EPM 3)

ECO mode

Settings Manager

Service Interval Manager

Adjustable and revolving main control panel at operator platform

Two adjustable and revolving screed control panels

Battery master switch

Electric switch cabinet

MATRIS

PSR telematics

### Structure

All-weather roof of GRP (glass-fiber reinforced plastic)

Two seats, laterally extendable

Anti-vandalism kit

Near field mirrors at weather roof

Volvo Green Key

### Screed

Split towing arms

Screed lock

Hydraulic crown adjustment VB screeds

Quick coupling system for Vario screeds

### Lights

Operator's platform lighting

Home light function

### Environmental

Sound insulation

## OPTIONAL EQUIPMENT

### Material Management

Individual operating hopper wings

### Electrics and electronics

230V power sockets

High ambient temperature fan

On-board diagnostic function for fixed screed heating bars

Levelling equipment

### Screed

Screed spacer blocks

Screed assist

Screed anti-climbing lock

Screed load device

Screed tensioning device

Hydraulic height Adjustment of Extendable Screed

### Lights

Basic Kit Halogen

Warning beacons LED

### Environmental

High performance spray cleaning unit

## SELECTION OF VOLVO OPTIONAL EQUIPMENT

Additional 230V sockets



Screed tensing device



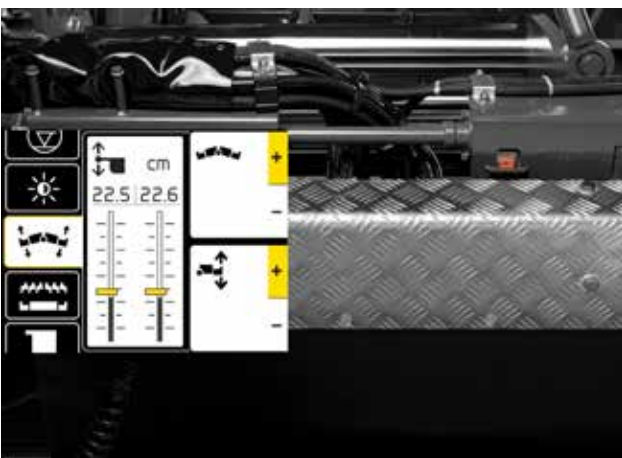
Screed load device



LED warning beacon



Hydraulic height Adjustment of Extendable Screed



Not all products are available in all markets. Under our policy of continuous improvement, we reserve the right to change specifications and design without prior notice. The illustrations do not necessarily show the standard version of the machine.

**V O L V O**