

## OUR DEMOLITION OFFER



Primary demolition



Site remediation



Trucks: equipment transportation and distribution of material



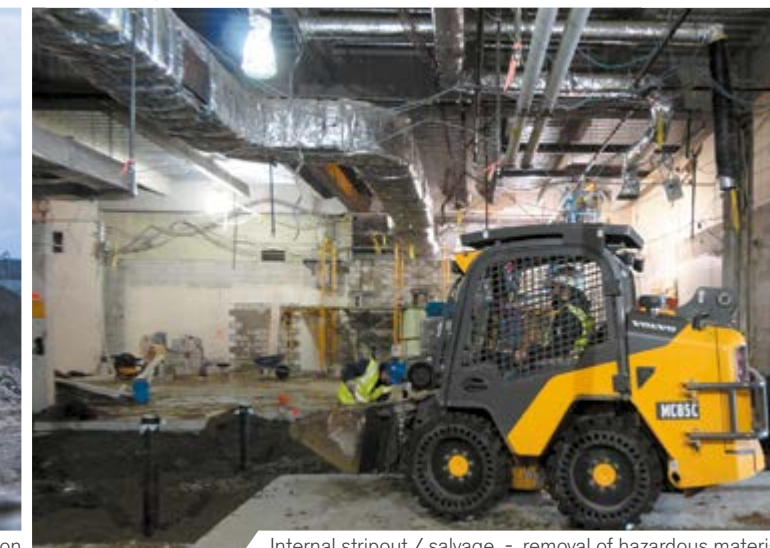
Secondary demolition



Attachments



Material reclamation



Internal stripout / salvage - removal of hazardous material

**VOLVO**

Volvo Construction Equipment  
www.volvoce.com

Volvo Construction Equipment



## OVER 180 YEARS OF EXCELLENCE STABILITY REACHES NEW HEIGHTS



## PURPOSE BUILT FOR DEMOLITION

Achieve a new level of success with the wide offer from Volvo Construction Equipment. Throughout the years, we've listened to your requirements and designed purpose built products and solutions to take on all your demolition duties.



We are the headline sponsor of

**WORLD DEMOLITION SUMMIT 2017**  
CONFERENCE AND AWARDS  
LONDON, UK THURSDAY 2 NOVEMBER



# PROGRESS IS IN OUR DNA

With nearly two centuries of engineering excellence, you can count on Volvo Construction Equipment to design lean, mean, demolition machines. With a pioneering spirit and great inventiveness, we have always been a driving force in moving development forward throughout all these years.

Carl Gerhard Bolinder.



Jean Gerhard Bolinder.



Johan Theofron Munktel

1832

Eskilstuna, Sweden

Three sons of the industrial revolution laid the foundation of Volvo Construction Equipment – Johan Theofron Munktel and brothers Jean and Carl Gerhard Bolinder.

1954

Eskilstuna, Sweden

The first Volvo H10 wheel loader is launched.

1 MODEL VERSION

1960

Arvika, Sweden

The line of wheel loaders is expanded thanks to the acquisition of Arvika-Thermaenius AB Arvikaverken.



1966

Braas, Sweden

Volvo invents the articulated hauler concept and launches the DR631.

1982

Landskrona, Sweden

Rigid haulers are added to complement the hauler line, following the acquisition of AB Kockum Landsverk.



1985

Buchanan, USA  
Pederneras, Brazil

Volvo allies with Clark Equipment and enters the Americas. Michigan wheel loaders and Euclid rigid haulers are added to the portfolio.

68 MODEL VERSIONS

1990

Konz, Germany

Compact wheel loaders are added to the range thanks to the acquisition of Zettelmeyer Baumaschinen GmbH.



1991

Eslöv, Sweden

Volvo acquires Åkermans Gjuteri och Mekaniska Verkstad and adds excavators to its product offering.



1995

Belley, France

Compact excavator line is extended through the acquisition of Pel-Job.



1997

Goderich, Canada

The road range is initiated as a result of the launch of the motor grader line\* and the acquisition of Champion Road Machinery.



175 MODEL VERSIONS

1998

Changwon, Korea

The acquisition of Samsung CE reinforces the excavator line.



2002

Wroclaw, Poland

Launch of in-house designed backhoe loader\*.

2003

Asheville, USA

Production of skid steer loaders starts.



ACQUISITION

234 MODEL VERSIONS

2007

Shippensburg, USA  
Hamel, Germany  
Bangalore, India

The road range is reinforced with the acquisition of Ingersoll-Rand's asphalt paver (ABG/BlawKnox) and compaction lines.



ACQUISITION

2014

Motherwell, Britain

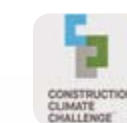
The hauler line – rigid and articulated haulers – expands after the acquisition of Terex Trucks.



ACQUISITION

Volvo acquires Shandong Lingong and ranks among the top three construction equipment manufacturers in China.

Linyi, China



329 MODEL VERSIONS



Not all products are available on all markets.  
\* This product line has been discontinued from the current offering.

# DEALERS ON YOUR DOORSTEP

We are present worldwide with over 1,520 dealerships, listening to your requirements and supporting your business. From supplying machines to maintaining your operations, we are a one-stop-shop for all your operational needs. Complete the job on time and on budget with Volvo by your side.



To find your local dealership, scan the QR code

