

VOLVO CONSTRUCTION EQUIPMENT

FORESTRY SOLUTIONS TRACKED FORESTRY CARRIERS



MORE CARE. BUILT IN.



FORESTRY SOLUTIONS HARVESTING/PROCESSING

FORESTRY EXCELLENCE. NEW CORNERSTONE.

Since 1927 the worldwide Volvo standard of value has been built around a cornerstone of excellence. As a result, Volvo Construction Equipment has remained a global leader in innovation, quality, productivity, safety, fuel efficiency and environmental care. Now, new higher standards of value and excellence have been set with the introduction of the Volvo FC family of purpose-built, tracked forestry carriers. These new forestry carriers are designed and built to the same exacting standards that Volvo customers around the globe have come to expect and rely on.

Rugged. At Volvo It Is More Than Just a Word.

Working in the forest is demanding work. Nowhere is this more evident than in the applications of harvesting and processing. Steep slopes, mud, snow, frigid winter darkness, searing summer heat, rocky mountainous terrain and heavy lifting are standard operating conditions. To be productive in any combination of these conditions, shift after shift, you need a forestry carrier that is safe, strong and, most of all, rugged. Volvo's latest tracked forestry carriers start with a purpose-built undercarriage and lower frame, reinforced track motor covers and idlers, dual mounted bottom rollers on top and full-length track rock guards providing unequalled protection from almost anything that a forest work environment can toss at it.

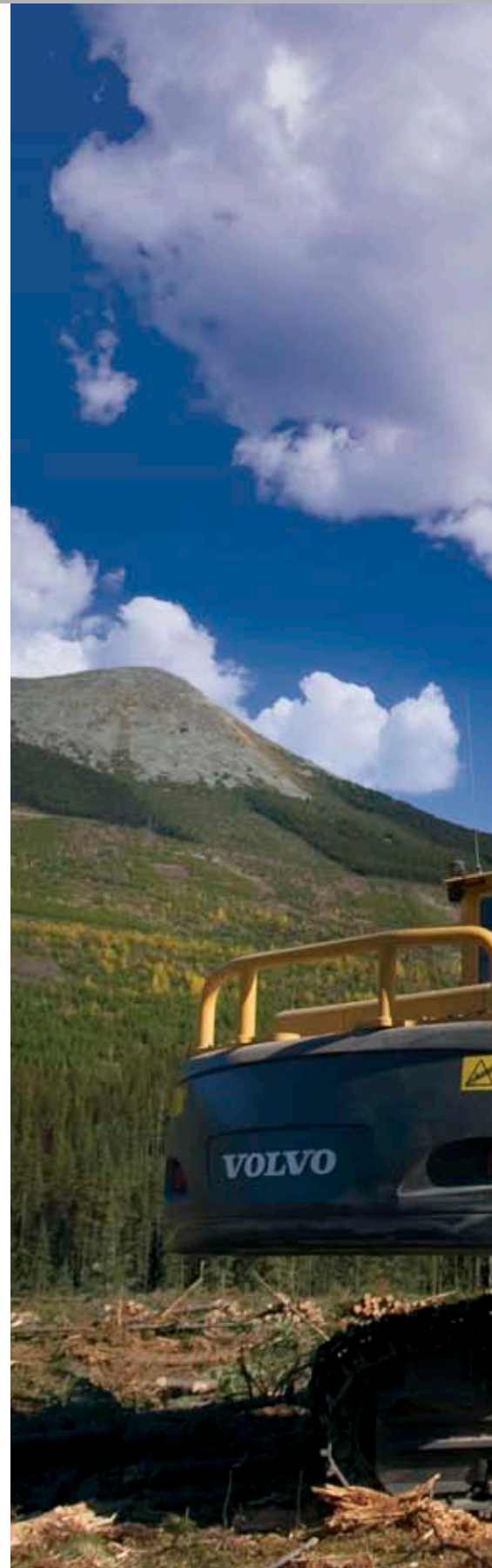
Tough Fuel Efficient Power.

Each model of these rugged, heavy-duty,

tracked forestry carriers is powered by a new generation Volvo, turbo-charged, EPA Tier III-compliant diesel engine with Advanced Combustion Technology (V-ACT). This muscle is then perfectly balanced to a state-of-the-art, dedicated hydraulic system with electronically controlled pump. The result: exceptional performance at lower revs, smooth and precise lifting power and stability, faster cycle times and ultra-efficient fuel consumption. Translation? More production. For less. Tough is good — but tough, powerful, stable and extremely fuel-efficient is even better.

Volvo. Every Part A Perfect Fit.

Every Volvo owner appreciates the ease of parts availability from a respected global dealer network, lower operating costs and, over one hundred components and consumable parts common to other Volvo machines they may own. This is just another way that Volvo says value.



	FC212C	FC242C	FC2924C	FC3329C
WEIGHT (LESS ATTACHMENT)	24.5 T	27.9 T	34.6 T	37.8 T
MAXIMUM RATED KW (HP)	123 KW / 167 HP	123 KW / 167 HP	138 KW / 188 HP	153 KW / 208 HP
MAXIMUM ENGINE TORQUE	735 NM	735 NM	870 NM	965 NM
MAXIMUM TRACTIVE EFFORT	183 KN	209 KN	230 KN	258 KN



FC2121C is ideal for thinning and smaller wood.



Consult your Volvo dealer for the availability of OEM custom cabs.



Optional gull-wing design for added protection and convenience.

FORESTRY SOLUTIONS LOAD/SORT/STACK/SHOVEL

THE GAME OF PICK-UP-STICKS IS HARD. GAME ON.

The new Volvo FC family of heavy-duty, purpose-built tracked forestry carriers with their heavy-duty forestry guarded, standard equipment boom and arm offer the ultimate combination of capacity and reach. In turn, each carrier delivers unique solutions for log loading, sorting, stacking, or shovel logging applications.

Volvo's advanced hydraulic system, with in-cab operator-selectable hydraulic flow and pressure provides the variable lifting power and swing torque you need without burning extra fuel. Further protection of the hydraulic system is provided by the reinforced guarding of many hydraulic lines and cylinders. Add the grapple of your choice and the game is on.

Play Safe.

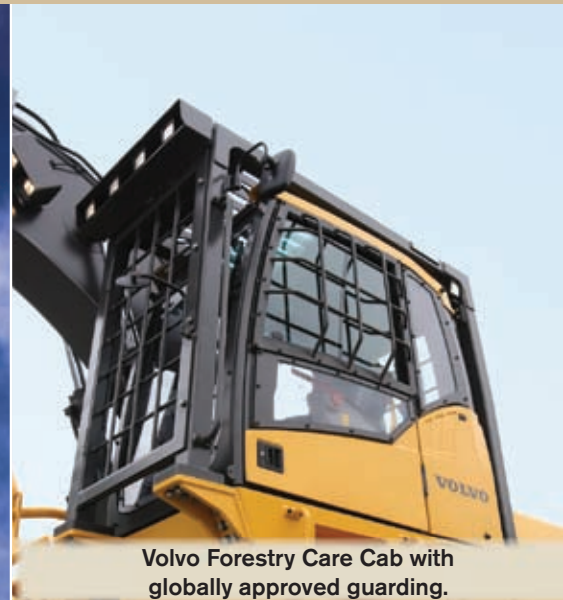
At Volvo, we understand that the machine operator's safety and comfort is job one. With the newly designed spacious **Volvo Forestry Care Cabs** with integrated heavy-duty, falling object guard (FOG), cab risers and tough polycarbonate windows with guarding, operators have an unequalled level of visibility and protection. Every Volvo forestry cab is fully compliant with global safety standards as defined by OSHA, WCB, SAE and ISO. Fully adjustable climate control keeps everything comfortable on those hot, steamy

summer days, and the heated operator seat makes starting work on frigid winter mornings more bearable.

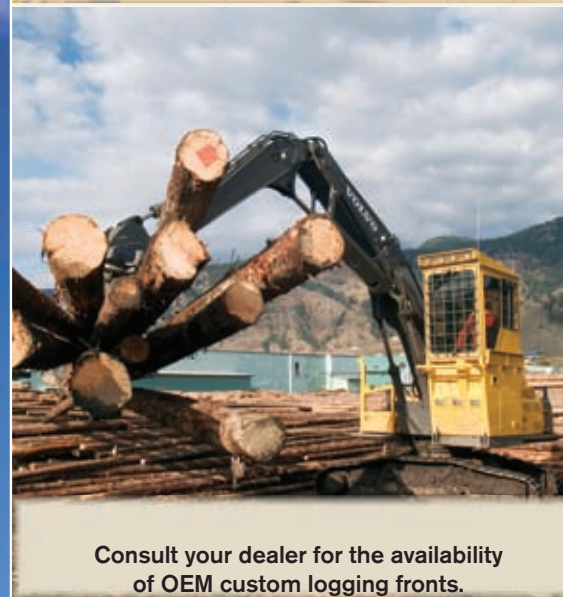
Invest Smartly.

When you choose from the new Volvo FC family of tracked forestry carriers that is right for your log harvesting operation, you have made a very smart investment. An investment that will pay dividends shift after shift for years to come. So take a stand. Select a Volvo. It's a smart, quality investment. Put one to work on your forestry related job site.





Volvo Forestry Care Cab with globally approved guarding.



Consult your dealer for the availability of OEM custom logging fronts.



Top guarding and additional fuel capacity options available.

FORESTRY SOLUTIONS ROAD BUILDING/STUMPING/SILVICULTURE



STUMPED? NOT WHEN YOU OWN A VOLVO.

When it comes to the forestry applications of road building, stump harvesting or silviculture, the power, durability and versatility of the new Volvo FC family of heavy-duty, tracked forestry carriers is second to none. Superior boom and arm construction, powerful V-ACT engines and smooth hydraulics assure that you will never be stumped on the job site.

Volvo Quality and Innovation.

The unique, gull-wing rear body cover available on the

FC2421C model is another optional Volvo innovation designed to save you time and money. With its steel frame construction and heavy-duty metal panels, all inside engine, electrical and hydraulic components, including the fuel tank, muffler and exhaust pipe, are protected. When open, the expansive gull-wings, with their anti-slip catwalks, allow for safe and easy service access.

Versatility. Another Volvo Value.

Every heavy duty, purpose-built Volvo tracked forestry carrier is quickly and easily adapted to a wide variety of other forestry related applications. It's your job site. So choose Volvo. It is the cost efficient forestry solution for your greater productivity.

FORESTRY SOLUTIONS FROM START TO FINISH

ALL THE IRON. FOR ALL THE WOODS.

Whatever forest industry application you are committed to, there is a **Volvo Forestry Solution** to help you get the job done.

From the industry's most advanced motor graders, to specialized, articulated haul trucks, comfortable and fuel efficient wheeled loaders, or the most progressive, operator-friendly, wheeled or tracked forestry carriers, Volvo products for forestry are innovative, tough and ready for the task at hand.

So whether it's road building and maintenance, harvesting and processing, log loading or unloading, hauling or sorting on the landing or at the mill, **Volvo Forestry Solutions** are designed and built to help you finish the job easier, more comfortably and for less cost from start to finish. Trust the Volvo brand. It's built on the cornerstones of excellence and value.



VOLVO C-SERIES TRACKED FORESTRY CARRIERS

A NEW STANDARD OF EXCELLENCE.



HD top and side panels and rear-opening engine cover protects engine components from falling objects and provides safe, easy service access.



Optional gull-wing design available on the FC2421C model adds HD protection and user friendly service access.



Reinforced side doors with HD screens protect coolers and pumps while providing maximum air flow.



Easy-access HD panels, doors, hinges and lockable latches protect electrical components and simplify ground level maintenance and service.



HD right-side body deflector rail and reinforced right corner guard post. With spacious lockable tool storage.



HD rear body deflector rail for added protection. Also available, optional additional 650 l fuel tank.



Punched 305 mm steel-plate anti-slip catwalks and platforms provide superior grip when servicing in wet or icy conditions.





Volvo Forestry Care Cab with standard 457 mm cab riser and full forestry guarding meets global safety standards.



Boom and arm with HD forestry guarding, integrated piping, hydraulic cylinder and work light guarding.



Boom cylinder guard. Optional boom foot riser increases boom and arm reach and overall machine stability.



HD swing-ring guarding provides full protection for swing-ring bearing and grease piping.



Purpose-built, high-walker undercarriage and high capacity track motors with HD track motor covers.



HD full length track rock guards. Dual mounted bottom rollers on top. Reinforced idlers with derail guards.



Enhanced 8 mm underbody guarding with bolt-head protection keeps forestry debris and rocks from damaging the super structure.

Features vary from model to model.
See your Volvo dealer for current specifications.
Manufacturer reserves the right to modify the machine without prior notice.

TRACKED FORESTRY CARRIER FEATURES

FEATURES	FC2121C Harvester/Processor/General Purpose				FC2421C Harvester/Processor/General Purpose				FC2924C Loader/Processor/General Purpose				FC3329C Loader/Shovel/Road Builder/Processor				
	FC2121C Harvester/Processor/General Purpose	FC2421C Harvester/Processor/General Purpose	FC2924C Loader/Processor/General Purpose	FC3329C Loader/Shovel/Road Builder/Processor	FC2121C Harvester/Processor/General Purpose	FC2421C Harvester/Processor/General Purpose	FC2924C Loader/Processor/General Purpose	FC3329C Loader/Shovel/Road Builder/Processor	FC2121C Harvester/Processor/General Purpose	FC2421C Harvester/Processor/General Purpose	FC2924C Loader/Processor/General Purpose	FC3329C Loader/Shovel/Road Builder/Processor	FC2121C Harvester/Processor/General Purpose	FC2421C Harvester/Processor/General Purpose	FC2924C Loader/Processor/General Purpose	FC3329C Loader/Shovel/Road Builder/Processor	
HEAVY DUTY UPPER BODY	Standard (Std.) engine cover & radiator guard	■	◇	○	△												
	Heavy Duty (HD) engine cover & radiator protection		◆	●	▲												
	RH side and rear deflector guards (HD option only)		◆	●	▲												
	HD hydraulic & fuel tank protection		◆	●	▲												
	HD service doors and latches		◆	●	▲												
	Side impact protection	■															
	Optional gull-wing. Replaces HD engine cover, deflectors and service doors		◇														
	Right front corner guard with post	■	◆	●	▲												
	HD cowling		◆	●	▲												
	HD upper frame with catwalk & anti-slip plates		◆	●	▲												
	HD left side bumper rail	■															
	HD underbody and belly cover with bolt protection	■	◆	●	▲												
	Swing ring protection	■	◆	●	▲												
	Swing room guard (not available w/boom riser)	■	◆	●	▲												
UNDERCARRIAGE	Standard lower frame	■															
	High & wide lower frame		◆	●	▲												
	Standard track gear box	■															
	HD track gear box with high draw bar		◆	●	▲												
	HD track motor covers	■	◆	●	▲												
	Idler reinforced w/derail guard		◆	●	▲												
	High tension recoil		◆	●	▲												
	HD full length track guard	■	◆	●	▲												
Dual mounted bottom rollers on top		◆	●	▲													
BOOM & ARM	Boom & arm with HD forestry guarding	■	◆	●	▲												
	OEM custom front (consult dealer)		◇	○	△												
	Boom lights with HD guards	■	◆	●	▲												
	Boom foot riser		◇	○	△												
	Dedicated hydraulic system for harvesters	□	◇	○	△												
	Dedicated hydraulic system for log loaders		◇	○	△												
	OPERATORS CABIN	HD forestry guarding with PC front window	■	◆	●	▲											
		HD forestry guarding with glass front window		◇	○	△											
		5 m wiring harness		◇	○	△											
		2.5 m harness		◇	○	△											
		Cab riser 457 mm		◆	●	▲											
		OEM cab (consult dealer)		◇	○	△											
		ADDITIONAL FEATURES	Standard counter weight	■	◆	●	▲										
	Heavier counter weight			◇	○	△											
Additional fuel tank (with standard counter weight)			◇	○	△												
Additional oil cooler	□		◇	○	△												
15 working lights	■		◆	●	▲												

VOLVO CARE CAB GLOBAL PROTECTION STANDARDS

STANDARDS	DESCRIPTION
ISO 10262 (AS 4998), SAE J1356	Falling Object G uard
ISO 3449 (SAE J231, G 608), ISO 8083 (G 609)	Falling Object P rotective S tructure
ISO 8084 (SAE J1084, G 604)	Operator P rotective S tructure
ISO 12117	Tip-Over P rotective S tructure
G 602	Guard for raised cab
G 603	Window guard

LEGEND

Standard	■	◆	●	▲
Option	□	◇	○	△

Specifications, dimensions and appearance of models may vary from those shown in this publication. Manufacturer reserves the right to modify models without prior notice.

SPECIFICATIONS

DESCRIPTION		FC212C	FC242C	FC292C	FC3329C	
ENGINE	Engine Model	Volvo D6E EAE3	Volvo D6E EAE3	Volvo D7E EBE3	Volvo D7E EAE3	
	Maximum HP At	1 800 rpm	1 800 rpm	1 800 rpm	1 800 rpm	
	Gross kW/HP	123 kW / 167 hp	123 kW / 167 hp	138 kW / 188 hp	153 kW / 208 hp	
	Net kW/HP (ISO 9249/J1349)	110 kW / 150 hp	110 kW / 150 hp	125 kW / 170 hp	143 kW / 194 hp	
	Maximum Torque (1 350 rpm)	735 Nm	735 Nm	870 Nm	965 Nm	
	Displacement	5.7 l	5.7 l	7.1 l	7.1 l	
	Bore	98 ml	98 ml	108 ml	108 ml	
	Stroke	126 mm	126 mm	130 mm	130 mm	
ELECTRICAL	Voltage	24 volt	24 volt	24 volt	24 volt	
	Batteries	2 x 12 volt	2 x 12 volt	2 x 12 volt	2 x 12 volt	
	Battery Capacity	150 Ah	150 Ah	200 Ah	200 Ah	
	Alternator	28 volt 80 amp	28 volt 80 amp	28 volt 80 amp	28 volt 80 amp	
CAPACITIES	Fuel Tank	350 l	350 l	470 l	470 l	
	Additional Fuel Tank (O)		650 l	685 l	675 l	
	Hydraulic System (Total)	285 l	285 l	325 l	400 l	
	Hydraulic Tank	160 l	160 l	195 l	195 l	
	Engine Oil	25 l	25 l	30 l	30 l	
	Engine Coolant	32 l	32 l	36 l	36 l	
	Swing Reduction Unit	6 l	6 l	12 l	12 l	
	Travel Reduction Unit	2 x 5.7 l	2 x 5.2 l	2 x 6.1 l	2 x 5.7 l	
SWING	Maximum Swing Speed	11.6 rpm	11.6 rpm	11.4 rpm	10.2 rpm	
	Swing Torque	76.6 kNm	76.6 kNm	85.6 kNm	104.3 kNm	
DRIVE	Maximum Drawbar Pull	183 kN	209 kN	230 kN	258 kN	
	Maximum Speed	5.5 km/h	4.7 km/h	4.6 km/h	3.8 km/h	
	Gradeability	35 deg / 70%	35 deg / 70%	35 deg / 70%	35 deg / 70%	
UNDERCARRIAGE	Track Pads	2 x 49	2 x 49	2 x 50	2 x 48	
	Link Pitch	190 mm	190 mm	203 mm	215 mm	
	Shoe Width (Triple Grouser)	500/600/700 mm	600/700/800 mm	600/700/800 mm	800 mm	
	Bottom Rollers	2 x 9	2 x 9	2 x 9	2 x 9	
	Top Rollers	2 x 2	2 x 2	2 x 2	2 x 2	
HYDRAULICS	Main Pump	Type	2 x Variable Displacement Axial Piston Pumps			
		Max Flow	2 x 200 l/min	2 x 200 l/min	2 x 230 l/min	2 x 250 l/min
	Pilot Pump	Type	Gear Pump			
		Max Flow	18 l/min	18 l/min	20 l/min	19 l/min
	Hydraulic Motors	Travel	Variable Displacement Axial Piston Motor With Mechanical Brake			
		Swing	Fixed Displacement Axial Piston Motor With Mechanical Brake			
	Hydraulic Cylinders	Boom	125 x 1 235 mm	125 x 1 235 mm	135 x 1 346 mm	140 x 1 480 mm
		Arm	135 x 1 540 mm	135 x 1 540 mm	140 x 1 665 mm	150 x 1 745 mm
		Bucket	120 x 1 065 mm	120 x 1 065 mm	130 x 1 150 mm	140 x 1 140 mm

GROUND PRESSURE

DESCRIPTION		OPERATING WEIGHT*	TRACK WIDTH	SHOE WIDTH	GROUND PRESSURE
FC2121C (Standard) Boom 5.7 m Arm 2.9 m Counterweight 4 200 kg	Triple Grouser	23 530 kg	2 890 mm	500 mm	58.8 kPa
		23 780 kg	2 990 mm	600 mm	49.0 kPa
		24 235 kg	3 090 mm	700 mm	43.1 kPa
	Triple Grouser HD	23 950 kg	2 990 mm	600 mm	50.0 kPa
	Double Grouser	24 490 kg	3 090 mm	700 mm	43.1 kPa
FC2421C (Standard) Boom 5.7 m Arm 2.9 m Counterweight 4 200 kg	Triple Grouser	25 610 kg	3 220 mm	600 mm	53.0 kPa
		26 060 kg	3 320 mm	700 mm	46.1 kPa
		26 345 kg	3 420 mm	800 mm	41.2 kPa
	Double Grouser	26 315 kg	3 320 mm	700 mm	47.1 kPa
FC2421C (Gullwing) Boom 5.7 m Arm 2.9 m Counterweight 4 200 kg	Triple Grouser	26 410 kg	3 220 mm	600 mm	54.9 kPa
		26 860 kg	3 320 mm	700 mm	48.0 kPa
		27 145 kg	3 420 mm	800 mm	42.2 kPa
	Double Grouser	27 115 kg	3 320 mm	700 mm	48.0 kPa
FC2924C (Standard) Boom 6.0 m Arm 2.97 m Counterweight 4 520 kg	Triple Grouser	31 459 kg	3 400 mm	600 mm	59.8 kPa
		32 019 kg	3 500 mm	700 mm	52.0 kPa
		32 389 kg	3 600 mm	800 mm	46.1 kPa
	Double Grouser	32 174 kg	3 500 mm	700 mm	52.0 kPa
FC2924C (Add. Fuel Tank) Boom 6.0 m Arm 2.97 m Counterweight 4 520 kg	Triple Grouser	32 255 kg	3 400 mm	600 mm	60.8 kPa
		32 815 kg	3 500 mm	700 mm	53.0 kPa
		33 185 kg	3 600 mm	800 mm	47.1 kPa
	Double Grouser	32 970 kg	3 500 mm	700 mm	53.9 kPa
FC3329C (Standard) Boom 6.2 m Arm 3.05 m Counterweight 5 417 kg	Triple Grouser	35 720 kg	3 600 mm	800 mm	50.0 kPa
	Double Grouser	35 385 kg	3 400 mm	600 mm	66.7 kPa
		35 850 kg	3 500 mm	700 mm	57.9 kPa
FC3329C (Add. Fuel Tank) Boom 6.2 m Arm 3.05 m Counterweight 5 417 kg	Triple Grouser	36 520 kg	3 600 mm	800 mm	51.0 kPa
	Double Grouser	36 185 kg	3 400 mm	600 mm	67.7 kPa
		36 650 kg	3 500 mm	700 mm	58.8 kPa

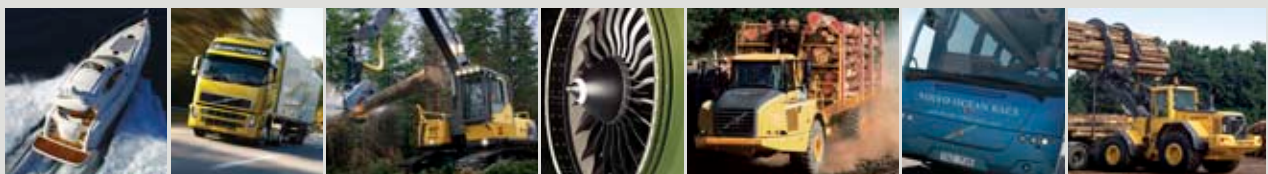
*Before attachment and fuel

VOLVO'S ENGINE LEADERSHIP SPANS LAND, SEA, SKY AND SPACE

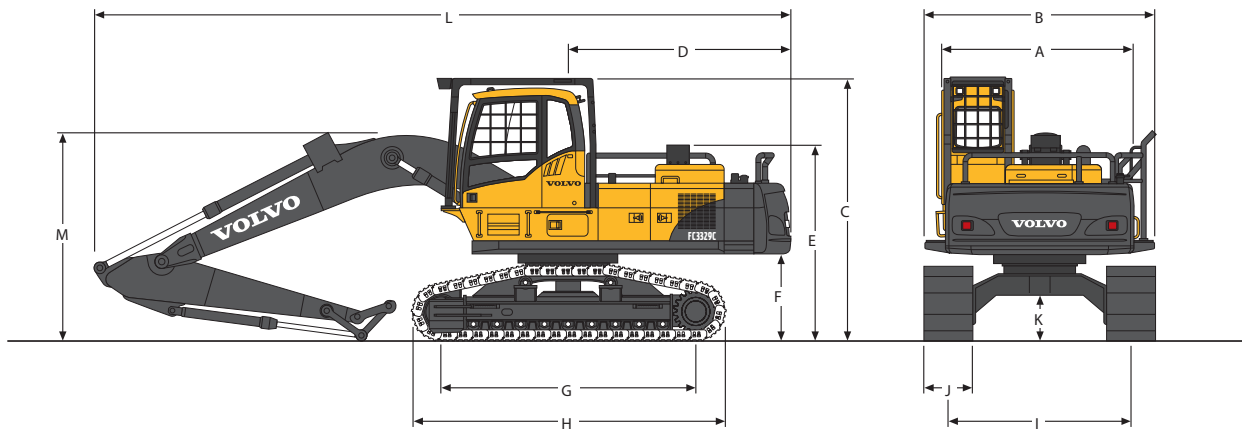
As the world's largest manufacturer of 9-to-18 litre diesel engines, Volvo has unmatched expertise designing power systems that move the world. Volvo engines for Volvo Forestry Equipment,

Volvo Construction Equipment, Volvo Aero, Volvo Buses, Volvo Penta and Volvo Trucks define productivity and fuel economy. Our performance has been honed on land, over the sea, across the sky and into space.

Leading research and development keeps all Volvo Group products at the forefront of productivity. So when we say Volvo engines are tested and proven, you can believe it. Trust in it. It's the real advantage of Volvo Power.



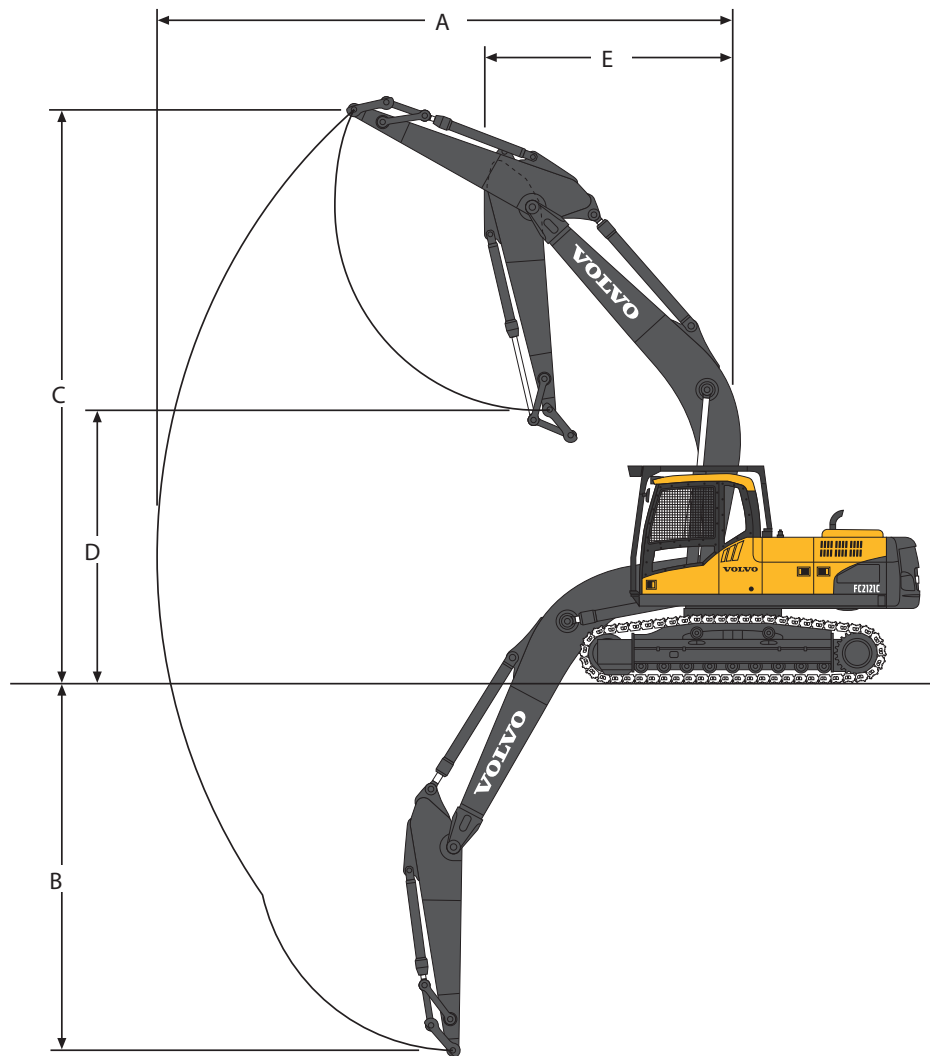
DIMENSIONS



DESCRIPTION	FC212C	FC242C	FC242C (Gullwing)	FC2924C	FC3329C
BOOM	5.7 m	5.7 m	5.7 m	6.0 m	6.2 m
ARM	2.5 m	2.9 m	2.9 m	2.97 m	3.05 m
FRAME	Standard lower frame	High walker 450 mm cab riser Additional fuel tank	High walker 450 mm cab riser Additional fuel tank	High walker 450 mm cab riser Additional fuel tank	High walker 450 mm cab riser Additional fuel tank
A) OVERALL WIDTH OF UPPER	2 590 mm	2 790 mm	2 790 mm	2 970 mm	2 790 mm
B) OVERALL WIDTH	2 730 mm	3 300 mm	3 300 mm	3 490 mm	3 490 mm
C) OVERALL HEIGHT OF FOG	3 050 mm	3 725 mm	3 725 mm	3 935 mm	3 975 mm
D) TAIL SWING RADIUS	2 750 mm	3 210 mm	3 210 mm	3 365 mm	3 415 mm
E) OVERALL HEIGHT OF ENGINE HOOD	2 150 mm	2 795 mm	2 940 mm	2 970 mm	3 000 mm
F) COUNTERWEIGHT CLEARANCE	1 041 mm	1 194 mm	1 194 mm	1 422 mm	1 448 mm
G) TUMBLER LENGTH	3 660 mm	3 660 mm	3 635 mm	4 015 mm	4 015 mm
H) TRACK LENGTH	4 460 mm	4 460 mm	4 455 mm	4 891 mm	4 968 mm
I) TRACK GAUGE	2 390 mm	2 620 mm	2 620 mm	2 800 mm	2 800 mm
J) SHOE WIDTH	700 mm	700 mm	700 mm	700 mm	700 mm
K) MIN. GROUND CLEARANCE	460 mm*	635 mm*	635 mm**	745 mm**	782 mm**
L) OVERALL LENGTH	9 650 mm	10 000 mm	10 000 mm	10 440 mm	10 740 mm
M) OVERALL HEIGHT OF BOOM	3 050 mm	2 960 mm	2 960 mm	3 040 mm	3 235 mm

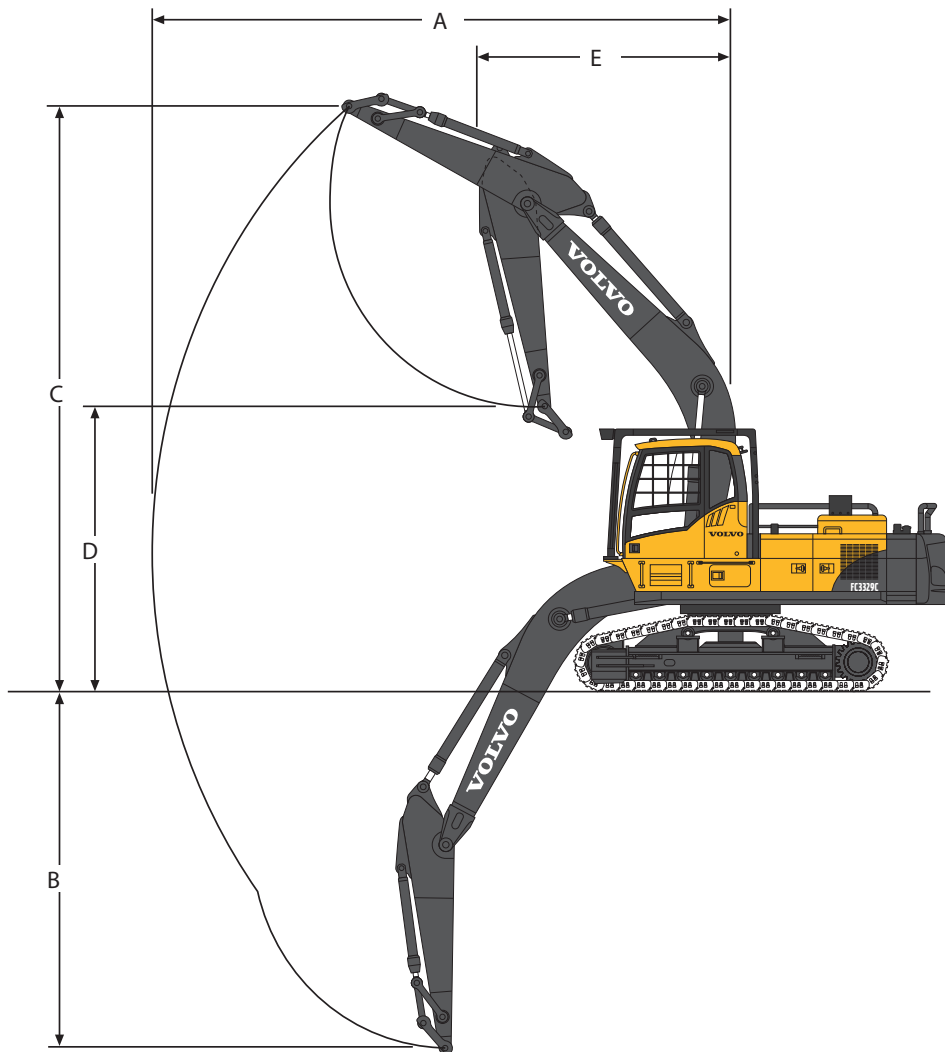
*With 600 mm HD triple grouser **With 700 mm double grouser

WORKING RANGES



DESCRIPTION	FC212C		FC242C	
FRAME	Standard lower frame	Standard lower frame	High walker with boom riser	High walker without boom riser
BOOM	5.7 m	5.7 m	5.7 m	5.7 m
ARM	2.5 m	2.9 m	2.9 m	2.9 m
A) MAX. REACH FROM SWING CENTER	8 080 mm	8 460 mm	8 460 mm	8 460 mm
B) MAX. DEPTH FROM GROUND	4 835 mm	5 235 mm	4 015 mm	5 070 mm
C) MAX. LIFTING HEIGHT	7 925 mm	8 150 mm	9 885 mm	8 315 mm
D) MAX. HEIGHT ON DUMPING	4 300 mm	3 910 mm	4 880 mm	4 070 mm
E) MIN. FRONT SWING RADIUS	3 670 mm	3 645 mm	1 765 mm	3 645 mm

WORKING RANGES



DESCRIPTION	FC2924C		FC3329C	
	High walker with boom riser	High walker without boom riser	High walker with boom riser	High walker without boom riser
FRAME				
BOOM	6.0 m	6.0 m	6.2 m	6.2 m
ARM	2.97 m	2.97 m	3.05 m	3.05 m
A) MAX. REACH FROM SWING CENTER	8 720 mm	8 720 mm	9 090 mm	9 090 mm
B) MAX. DEPTH FROM GROUND	4 145 mm	5 130 mm	4 665 mm	5 450 mm
C) MAX. LIFTING HEIGHT	10 295 mm	8 640 mm	10 570 mm	8 940 mm
D) MAX. HEIGHT ON DUMPING	5 300 mm	4 500 mm	5 405 mm	4 560 mm
E) MIN. FRONT SWING RADIUS	1 995 mm	3 890 mm	2 450 mm	4 185 mm



Volvo Construction Equipment is different. Our machines are designed, built and supported in a different way. That difference comes from an engineering heritage of over 175 years. A heritage of thinking first about the people who actually use the machines. About how to help them be safer, more comfortable, more productive. About the environment we all share. The result of that thinking is a growing range of machines and a global support network dedicated to helping you do more. People around the world are proud to use Volvo. And we're proud of what makes Volvo different – **More care. Built in.**



Not all products are available in all markets. Under our policy of continuous improvement, we reserve the right to change specifications and design without prior notice. The illustrations do not necessarily show the standard version of the machine.

VOLVO

Volvo Construction Equipment
www.volvo.com

PUB 21B1004246
2010.02
Volvo, Global Marketing

English (Global)
EXC