

VOLVO SINGLE DRUM COMPACTOR

# SD70D, SD70F



# PROVEN PERFORMANCE WITH EASY OPERATION

Volvo SD70 vibratory soil compactors are designed with many innovative features that offer excellent drum performance and reliability while providing a safe and comfortable environment for the operator. Both models are engineered to efficiently and effectively compact a variety of soil types while the powerful eccentric system with dual amplitude and frequency provides versatility on thin or thick material lifts.

## Features

- Visual warning lights for engine oil pressure, coolant temperature, hydraulic oil temperature, and air cleaner restriction
- Eccentric system with dual amplitude and frequency
- Ergonomically designed, roto-molded plastic operator platform reduces fatigue and allows easy access to all controls
- Gauges for coolant temperature, fuel, hour meter, and tachometer
- Heavy-duty axle with No-Spin® differential
- Hydraulic and eccentric oil level sight gauges
- Lockable control panel, engine cover, and fill caps
- Rear-mounted cooling system, easy access for cleaning
- ROPS / FOPS with seat belts
- Safety features include skid-resistant deck with footrest, dual deck rails, hand rails, back-up alarm, horn, and emergency stop
- Single control for direction and speed with on/off vibration switch
- Suspension seat with arm rest
- Battery master switch
- ONE METER BY ONE METER visibility

## Serviceability

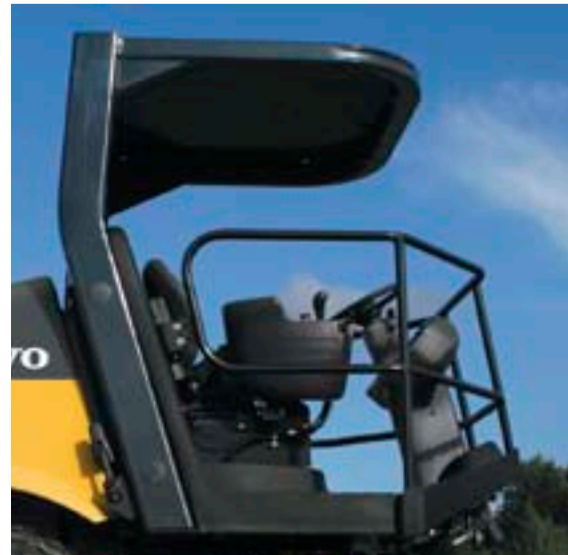
One-piece, rear-hinged engine cover for complete access and tilting operator platform for hydraulic repair access.

## Available Options

- Air precleaner
- Audible alarm
- Beacon light
- Cab with heat
- Cab with HVAC
- CompAnalyzer
- Inside drum scraper
- Leveling blade (padfoot drums)
- Patented 2-piece, clamp-on padfoot shell kit
- Speedometer / VPM meter package
- Work lights

## Optional Padfoot Shell Kit

A two-piece, clamp-on padfoot shell kit easily and quickly converts the SD70 smooth drum into a padfoot drum without changing the hydraulic system. Drum conversion is completed by bolting together the two half-shells and replacing the smooth scraper bar with padfoot teeth.



# SPECIFICATIONS

| Model                                   |                         | SD70D   | SD70F              |
|---|-------------------------|---|--------------------|
| <b>Machine Weights (w/ ROPS / FOPS)</b> |                         |   |                    |
| Operating Weight (CECE)                 | kg (lb)                 | 7 056 (15,556)  | 7 586 (17,724)     |
| Static Weight @ Drum                    | kg (lb)                 | 3 653 (8,053)   | 4 160 (9,171)      |
| Static Weight @ Tires                   | kg (lb)                 | 3 403 (7,502)   | 3 426 (7,553)      |
| Shipping Weight                         | kg (lb)                 | 6 842 (15,084)  | 7 372 (16,252)     |
| <b>Machine Dimensions</b>               |                         |   |                    |
| Length                                  | mm (in)                 | 5 044 (199)   | 5 044 (199)        |
| Width                                   | mm (in)                 | 1 870 (74)  | 1 870 (74)         |
| Height (top of ROPS / FOPS)             | mm (in)                 | 2 882 (113.5)   | 2 915 (114.5)      |
| Wheelbase                               | mm (in)                 | 2 673 (105)   | 2 673 (105)        |
| Curb Clearance                          | mm (in)                 | 385 (15)  | 445 (17)           |
| Inside Turning Radius (to drum edge)    | mm (in)                 | 3 249 (128)   | 3 249 (128)        |
| <b>Drum</b>                             |                         |   |                    |
| Width                                   | mm (in)                 | 1 676 (66)  | 1 676 (66)         |
| Diameter                                | mm (in)                 | 1 219 (48)  | 1 219 (48)         |
| Shell Thickness                         | mm (in)                 | 22 (0.88)   | 22 (0.88)          |
| Diameter Over Pad Feet                  | mm (in)                 | -   | 1 372 (54)         |
| Number Of Pad Feet                      |                         | -   | 84                 |
| Pad Height                              | mm (in)                 | -   | 76 (3)             |
| Pad Tip Area                            | cm <sup>2</sup> (sq in) | -   | 125 (21)           |
| <b>Vibration</b>                        |                         |   |                    |
| Max Frequency                           | Hz (vpm) High Amp       | 30,8 (1,850)  | 30,8 (1,850)       |
|   |                         | Low Amp   | 33,8 (2,025)       |
| Max Centrifugal Force                   | kN (lb) High Amp        | 143 (32,100)  | 171 (38,500)       |
|   |                         | Low Amp   | 104 (23,300)       |
| Nominal Amplitude                       | mm (in) High Amp        | 1,98 (0.078)  | 2 (0.08)           |
|   |                         | Low Amp   | 1,2 (0.047)        |
| <b>Propulsion</b>                       |                         |   |                    |
| Tire Size                               |                         | 14,9 x 24 - 6PR R3  | 14,9 x 24 - 6PR R1 |
| Type System                             |                         | Hydrostatic, two-speed motor on planetary axle w/ No-Spin® differential and single-speed drum with planetary gear reduction |                    |
| Drum Drive                              |                         | Planetary gear reduction  |                    |
| Travel Speed                            | km/h (mph) High         | 0 - 10,9 (0 - 6.8)  | 0 - 11,3 (0 - 7.0) |
|   |                         | Low   | 0 - 7,5 (0 - 4.7)  |
| <b>Engine</b>                           |                         |   |                    |
| Make / Model                            |                         | Kubota V3800DI Tier 3   |                    |
| Engine Type                             |                         | Turbocharged 4-cylinder   |                    |
| Rated Power @ Installed Speed           | kW (hp)                 | 74,0 (99.2)   | 74,0 (99.0)        |
| Electrical System                       |                         | 12 volts DC, negative ground; 90 A alternator; 750 CCA battery  |                    |
| <b>Brakes</b>                           |                         |   |                    |
| Service                                 |                         | Dynamic hydrostatic through propulsion system   |                    |
| Parking / Secondary                     |                         | Spring-applied, hydraulically released on axle and drum drive motors  |                    |
| <b>Miscellaneous</b>                    |                         |   |                    |
| Articulation Angle                      |                         | + / - 38°   | + / - 38°          |
| Oscillation Angle                       |                         | + / - 15°   | + / - 15°          |
| Fuel Capacity                           | l (gal)                 | 178 (47)  | 178 (47)           |
| Hydraulic Oil Capacity                  | l (gal)                 | 84 (22)   | 84 (22)            |
| Gradeability (theoretical)              |                         | 78%   | 70%                |

Product improvement is a continuing goal at Volvo. Designs and specifications are subject to change without notice or obligation.



# VOLVO CONSTRUCTION EQUIPMENT

Volvo Construction Equipment is different. Our machines are designed, built and supported in a different way. That difference comes from an engineering heritage of over 175 years. A heritage of thinking first about the people who actually use the machines. About how to help them be safer, more comfortable, more productive. About the environment we all share. The result of that thinking is a growing range of machines and a global support network dedicated to helping you do more. People around the world are proud to use Volvo.

Not all products are available in all markets. Under our policy of continuous improvement, we reserve the right to change specifications and design without prior notice. The illustrations do not necessarily show the standard version of the machine.

# **VOLVO**

**Volvo Construction Equipment**  
**[www.volvoce.com](http://www.volvoce.com)**

Ref. No 20032705-A  
2012.07  
Volvo, Global Marketing

English-22  
COS