

# VOLVO EXCAVATORS ATTACHMENTS



**MORE CARE. BUILT IN.**



# GENUINE VOLVO BUCKET SYSTEMS GIVE YOU THE LEADING EDGE.

Exceptional design and iron durability make Volvo bucket and quick fit systems the perfect addition to your excavator's versatility. Cut with authority, achieve quicker fills, dump easily, and move more material on every shift with Volvo. For efficient bucket changes and multi-task performance, Volvo offers the integration of a dedicated quick fit, and the versatility of a universal quick fit. All with full electro-hydraulic control — right from the cab.

- Volvo Construction Equipment brings you **more solutions** with an integrated **excavator bucket system**. Extend your excavator's power with a range of bucket capacities and widths, a versatile **quick fit** and **genuine Volvo bucket teeth**. Tools to beat any ground conditions.

- **Superior fabrication**, a **compact profile** and **optimized cutting edges** define Volvo's general purpose (GP), heavy duty (HD), rock and ditching buckets. That means the quickest fills and dumps, cycle after cycle.

- General purpose (**GP**) buckets excel at digging and rehandling soft to medium materials, with **anti-abrasive side cutters**, **hardened plate lip** and **self-sharpening Volvo teeth**.

- Designed for dense materials like clay and gravel, heavy duty (**HD**) buckets have **heavy fabrication** and **enhanced plating** on all ground-engaging surfaces.

- **Rock buckets** penetrate and load sharp, fractured materials with **extra-duty plating** and anti-abrasive design, and an **optional D-edge** for EC700 excavators.

- The **extreme service bucket** for EC700 excavators has **extra wear protection** for even the most extreme ground conditions, like sharp rock.

- Ditch cleaning fixed (**DCF**) buckets have a **wide face**, **round profile** and **stiffer gussets** for excavating muck and soft material.

- Bucket **interface options** include **direct-fit**, a dedicated **S-type quick fit (SQF)** and **universal quick fit (UQF)**, so you get versatility with just about any system.

- **Extra performance (XP)** buckets have a unique shape and profile (**short tip radius** and **curved floor**) that is so efficient it is called "self-filling." Available only for the universal quick fit interface.



- General purpose (GP) buckets have rugged design and self-sharpening GPE teeth.



- Heavy duty (HD) buckets have thick plating and high-grade teeth for cutting through dense material.



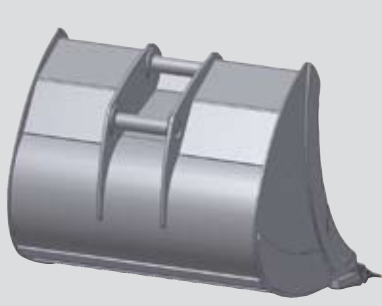
- Rock buckets have thicker plating than HD and long-wearing AMRE teeth for abrasive digging.



- Volvo buckets are engineered for long wear life.



• Dedicated S6 type bucket.



• Extra performance (XP) bucket.



• Direct-fit bucket.



• Dedicated S1, S2 & S3 type bucket.



• Universal quick fit works with a wide range of OEM buckets for use in normal or face shovel position.



• Dedicated quick fit (left) has tightest fit, while the universal quick fit works with many bucket brands.

### Maximize machine performance: universal or dedicated quick fit

Because excavators are called on to do more than ever before, Volvo has quick fit systems that maximize productivity:

• **Universal quick fit (UQF)** allows you to use a wide variety of buckets from many manufacturers. Also allows use of the bucket in face shovel position. Optimizes breakout force with the Volvo XP bucket.

• **Dedicated S1, S2, S3, S6 quick fit (SQF)** has the tightest bucket fit in the industry for minimum bucket and pin wear, and maximum breakout force. This low-profile quick fit has excellent visibility to the attachment. An integrated lifting eye provides more flexibility and increases lifting capacity.

# SELF-SHARPENING TOOTH SYSTEM CUTS THROUGH THE TOUGHEST JOBS.

Volvo perfects the excavator bucket's point of attack with a robust tooth system that delivers performance and long life. Cast and tempered from a high-strength alloy, Volvo teeth resist stress and deliver optimum penetration in hard or abrasive material. An innovative design lessens internal wear between tooth and adapter — and makes it easy to change teeth.

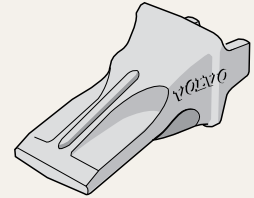
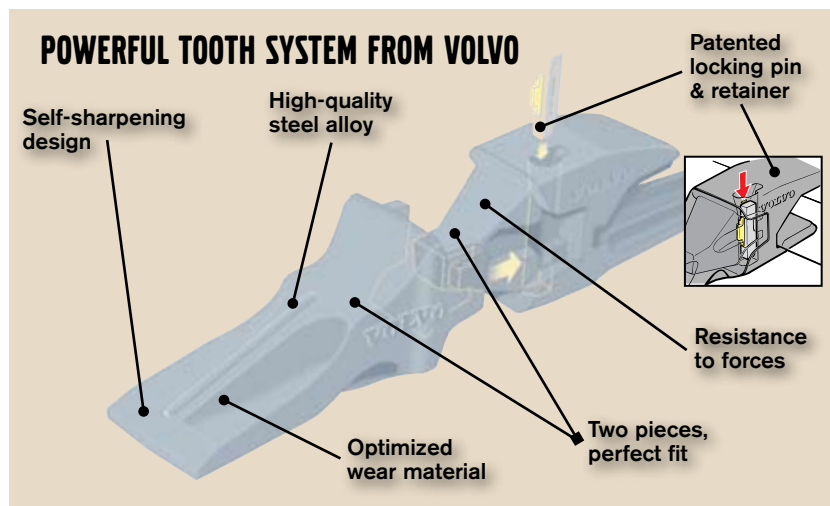
- Volvo teeth are designed to outfit excavator buckets for **any kind of digging conditions**, from stiff clay to sharp rock to loose fill.

- Volvo's **smart design** and **tight fit** between tooth and adapter greatly **reduce the wear** on bucket teeth caused by extreme breakout forces, abrasive digging conditions and shocks to the bucket.

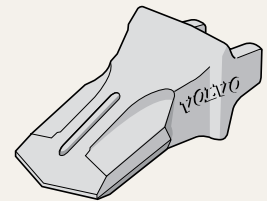
- The **patented vertical locking device** makes it easy to change teeth. The **steel pin with flexible lock retainer** tightly secures the tooth to the adapter. Smart design **transfers working stresses** away from the locking device, saving wear on the steel pin and extending pin life.

- **Self-sharpening Volvo** teeth are designed for a **small penetration area**, which reduces stress and wear at the point of contact.

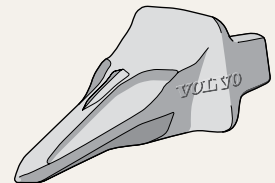
- From the hardness of the alloy to the strategically placed wear material, Volvo teeth are made for **performance and maximum wear**. That means **quicker job completion, lower fuel consumption** and **lower maintenance costs**.



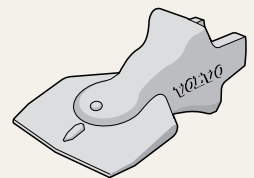
- **GPE:** Self-sharpening general-purpose tooth with good penetration and long service life.



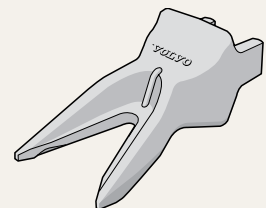
- **AMRE:** Self-sharpening tooth resists wear in rock and other abrasive materials.



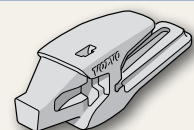
- **PPE:** Pick-point excavator tooth delivers maximum penetration in hard clay or frozen ground.



- **SNE:** Spade nose tooth is designed for finishing work such as leveling, grading, cleaning & backfilling.



- **TPE:** Twin pick point with sharp, dual-point profile is ideal for compact or frozen ground.



- **BL:** 1½ bottom leg adapter, for welding to both sides of the cutting edge.

UQF Fitting Range									
Excavator Model	EC140C ECR145C	EC160C EW160C	EW180C EW210C	EC210C ECR235C	EC240C	EC290C	EC330C EC360C	EC460C	EC700C
UQF Range	U14	U16	U18	U21	U24	U29 U29W*	U36	U46	U70
*U29W = U29 Wide									
SQF Fitting Range									
Excavator Model	EC140C ECR145C	EC160C EW160C	EW180C EW210C	EC210C ECR235C	EC240C	EC290C	EC330C EC360C	EC460C	EC700C
SQF Range	S6	S1 S6	S1	S1	S1 S2 S2N**	S2	S3	S3	-
**S2N = S2 Narrow									
									
Bucket Scope by Application									
Excavator Model	Bucket Top Type	GP	HD	Rock	ES	DCF			
EC140C, ECR145C	Direct Fit (DF)	X	X			X			
	S-type Quick Fit (SQF)	X	X			X			
	Extra Performance (XP)	X	X						
EC160C, EW160C EW180C	Direct Fit (DF)	X	X			X			
	S-type Quick Fit (SQF)	X	X			X			
	Extra Performance (XP)	X	X						
EC210C, ECR235C	Direct Fit (DF)	X	X	X		X			
	S-type Quick Fit (SQF)	X	X	X		X			
	Extra Performance (XP)	X	X	X					
EW210C	Direct Fit (DF)	X	X			X			
	S-type Quick Fit (SQF)	X	X			X			
	Extra Performance (XP)	X	X						
EC240C	Direct Fit (DF)		X	X		X			
	S-type Quick Fit (SQF)		X	X		X			
	Extra Performance (XP)		X	X					
EC290C	Direct Fit (DF)		X	X		X			
	S-type Quick Fit (SQF)		X	X		X			
	Extra Performance (XP)		X	X					
EC330C EC360C	Direct Fit (DF)		X	X		X			
	S-type Quick Fit (SQF)		X	X		X			
	Extra Performance (XP)		X	X					
EC460C	Direct Fit (DF)		X	X		X			
	S-type Quick Fit (SQF)		X	X		X			
	Extra Performance (XP)		X	X					
EC700C	Direct Fit (DF)		X	X	X				
	Extra Performance (XP)		X	X					
Notes: <b>General purpose (GP)</b> : soft to medium materials; <b>Heavy duty (HD)</b> : dense materials such as clay and gravel; <b>Rock</b> : sharp, fractured materials; <b>Extreme service (ES)</b> : especially sharp and abrasive material; <b>Ditch cleaning (DCF)</b> : muck and soft material. Buckets come factory equipped with GPE or AMRE teeth, depending on the application.									

# VOLVO QUICK FIT SYSTEMS: SAFETY AND PERFORMANCE.

Quick fit systems are an essential tool to help you get the most production and profit from your excavator. Volvo's quick fit features a five-level system designed to deliver flexibility and safe operation. Count on Volvo for field-proven solutions that have productivity and safety — built in.

## Level 1, Easy activation

The system is **engaged with one button** on the left joystick console, a time saver that is less cumbersome than the previous system. A **slide-action lock** on the quick fit button prevents unintended operation of the system.

## Level 2, Solenoid check valve

A hydraulic check valve in the solenoid prevents the bucket from unexpectedly releasing in case of hydraulic failure.

## Level 3, Cylinder check valve

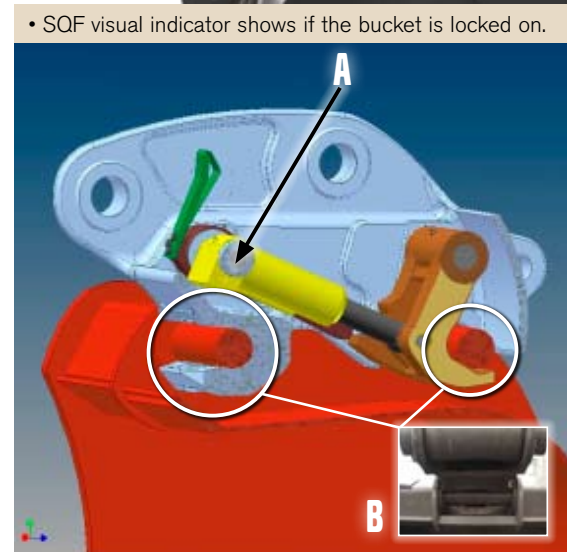
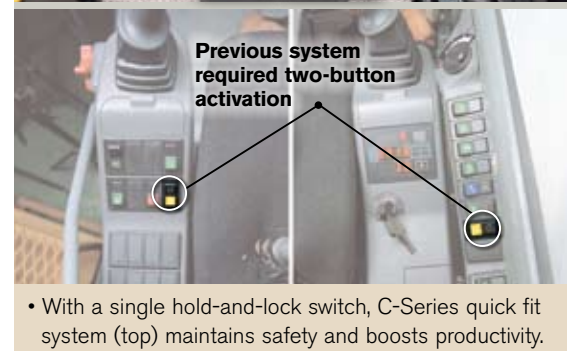
The cylinder has a hydraulic check valve that also prevents unexpected bucket release in case of hydraulic failure.

## Level 4, Mechanical lock-hold

A **blocking bar on the universal quick fit (UQF)** and a **spring in the cylinder of the dedicated quick fit (SQF)** can hold locking position in case of hydraulic failure.

## Level 5, Visual indicators

High-visibility **red indicator pin on the dedicated S-type quick fit (SQF)** disappears when the bucket is engaged and locked in place. With the **UQF, the operator has clear visibility** to see the quick fit curl around and engage the bucket pin.



- UQF check valve (A) prevents unintended release of the bucket. Operator has good view of grab pin and locking pin (B) when in the locking position.



• Volvo buckets deliver long wear with low maintenance.

• Quick, complete fills enhance job productivity.

• Buckets and teeth to match ground conditions.





Volvo Construction Equipment is different. Our machines are designed, built and supported in a different way. That difference comes from an engineering heritage of over 175 years. A heritage of thinking first about the people who actually use the machines. About how to help them be safer, more comfortable, more productive. About the environment we all share. The result of that thinking is a growing range of machines and a global support network dedicated to helping you do more. People around the world are proud to use Volvo. And we're proud of what makes Volvo different – **More care. Built in.**



*Not all products are available in all markets. Under our policy of continuous improvement, we reserve the right to change specifications and design without prior notice. The illustrations do not necessarily show the standard version of the machine.*

# **VOLVO**

## **Volvo Construction Equipment**

**Volvo Construction Equipment North America, Inc.**  
One Volvo Drive, Asheville, NC 28803-3447  
[www.volvoce.com](http://www.volvoce.com)

Ref. No. 22 A 100 4398  
Printed in USA 2008.02-5,0  
Volvo, Konz

English  
EXC