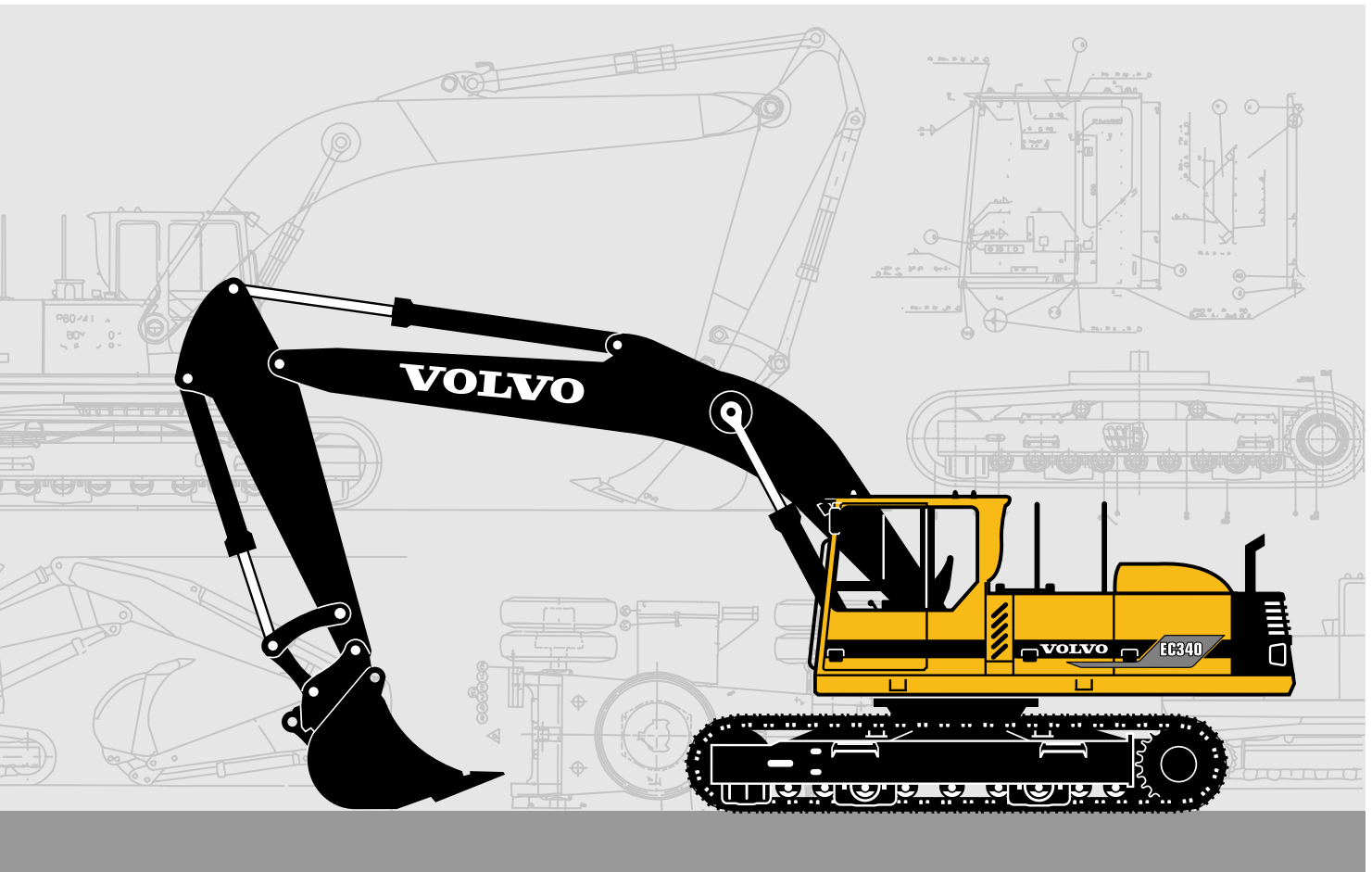


VOLVO EXCAVATOR

EC340



- **Engine power, gross:**
190 kW, 258 hp
- **Operating weight:**
33,5 – 36,7 t,
73,850 – 80,900 lb
- **Buckets:** 1 200 – 2 500 l,
1.57 – 3.27 yd³
- Low emission, turbocharged Volvo diesel engine with direct injection
- Mode selector and electronically controlled Speed Sensing Control
- 3 pumps in 3 circuits. Each movement of the digging equipment is prioritized by its own circuit, ensuring independent movements and good precision.
- Care Cab
 - computerized monitoring system, Contronic E
 - ergonomic environment
 - low sound level
 - filtered air
- Rugged digging equipment with spherical steel bearings
- High lifting, breakout and tearout forces for tough digging conditions
- Long undercarriage for good stability
- Swing circuit in oil bath
- Prepared for a number of optional items of equipment
- Low transport dimensions
- High travel speed – 5,0 km/h,
3.1 mph

VOLVO



ENGINE

The engine is a low-emission, turbocharged, 4-stroke diesel engine with intercooler, specially developed for excavator use. The machine can work at low engine speeds, contributing to good fuel economy, low sound level, less wear and longer life. Daily checkup of oil and coolant levels etc. is done directly from the cab.

Air filter: 3-stage

Auto Decelerator: Reduces the engine speed to an idling speed when levers and pedals are not activated.

Make	Volvo
Model	TD 103 KAE
Power output at	28,3 r/s, 1700 rpm
Net (ISO 9249 / SAE J1349)	182 kW, 247 hp
Gross (SAE J1349)	190 kW, 258 hp
No. of cylinders	6
Displacement, total	9,6 l, 586 in³
Bore	120,65 mm, 4.75 in
Stroke	140 mm, 5.51 in



ELECTRICAL SYSTEM

Well-protected electrical system with high capacity. Electrical distribution box based on printed circuit boards contains clearly arranged fuses and relays. The distribution box is prepared for connection of optional equipment. Battery disconnecter is standard.

Advanced **Contronic E monitoring system**, offering exhaustive information on machine status and enabling the operator to seek specific information and make his own adjustments, is standard. Alarms are indicated on the display in the form of flashing lights, with supplementary information in plain text.

Voltage	24 V
Batteries	2 x 12 V
Battery capacity	170 Ah
Alternator	28 V / 55 A
Alternator rating	1540 W



SWING SYSTEM

The superstructure is rotated by means of an axial piston motor and a planetary gearbox. Swing priority with 3 power positions. Automatic swing holding brake. The swing circle runs in an oil bath.

Swing, start to stop*	
90° swing	4.9 seconds
180° swing	7.1 seconds
Swing speed	8.6 rpm

* Empty bucket – extended equipment.



SERVICE REFILL CAPACITIES

Fuel tank	720 l, 190 gal
Hydraulic system, total	470 l, 124 gal
Diesel engine oil	37,5 l, 9.9 gal
Cooling system incl. glycol	58 l, 15.3 gal
Swing ring	24 l, 6.3 gal



UNDERCARRIAGE

Undercarriage with robust frame construction. Permanently lubricated rollers and front idlers. Three derailing shields are standard.

The undercarriage is operated by means of rocker pedals.

Undercarriage alternatives: narrow/long or wide/long.

Track chain size	B6HD
No. of track shoes	2 x 53
Track gauge, standard	700 mm, 27.6 in
optional	600/800/900 mm
.....	23.6/31.5/35.4 in
No. of bottom rollers	2 x 9
No. of top rollers,	2 x 2
optional, skid rails	2 x 1



DRIVE

Each track is powered by an axial piston motor. The track brakes are of the multi-disc type, spring-applied and hydraulically released. Travel motor, brakes and planetary gears are well protected in the track frame.

Max. tractive force	332 kN, 74,640 lbf
Max. travel speed	5,0 km/h, 3.1 mph
Gradeability	49° (115%)



CARE CAB

Easily accessible cab with wide door opening. Lined with sound-absorbent material. The cab mountings are vibration-inhibiting. Large glazed surfaces all around. The upper windshield pane can be slid up under the ceiling and the lower one can be removed. Sliding side window in the cab door.

Cab heater and defroster: Pressurized and filtered cab air is supplied by a 3-speed fan underneath the operator's seat. The air passes through the cab heater and can be distributed via 14 nozzles. Prepared for air conditioning.

Ergonomic operator's seat: Electrically heated operator's seat with adjustable suspension and headrest. The fore/aft position, height and angle of the seat are adjustable, as is the lumbar support. Individually adjustable armrests and control levers.

Exterior noise (ISO 6393)	
mean value of L_{WA} (sound power level)	108 dB(A)
Operator's position (ISO 6394)	
with the door closed	
mean value of L_{pA} (sound pressure level)	74 dB(A)



GROUND PRESSURE

Machine with 6,0 m, **19'8"** boom, 2,9 m, **9'6"** stick, 300 kg, **660 lb** quick fit, 1 450 kg, **3200 lb** bucket, 6 300 kg, **13,890 lb** counterweight and wide undercarriage.

Track gauge	Operating weight	Ground pressure
600 mm, 23.6 in	35 250 kg, 77,710 lb	63,6 kPa, 9.22 psi
700 mm, 27.6 in	35 650 kg, 78,590 lb	55,2 kPa, 8.01 psi
800 mm, 31.5 in	36 100 kg, 79,590 lb	48,9 kPa, 7.09 psi
900 mm, 35.4 in	36 500 kg, 80,470 lb	43,9 kPa, 6.37 psi



HYDRAULIC SYSTEM

The three-circuit hydraulic system, named "Excellence", is designed for high digging capacity, high manoeuvring precision and good fuel economy.

The three working pumps are power-controlled, and each can be directed to its own particular equipment movement for precision work. One pump is prioritized to the swing movement.

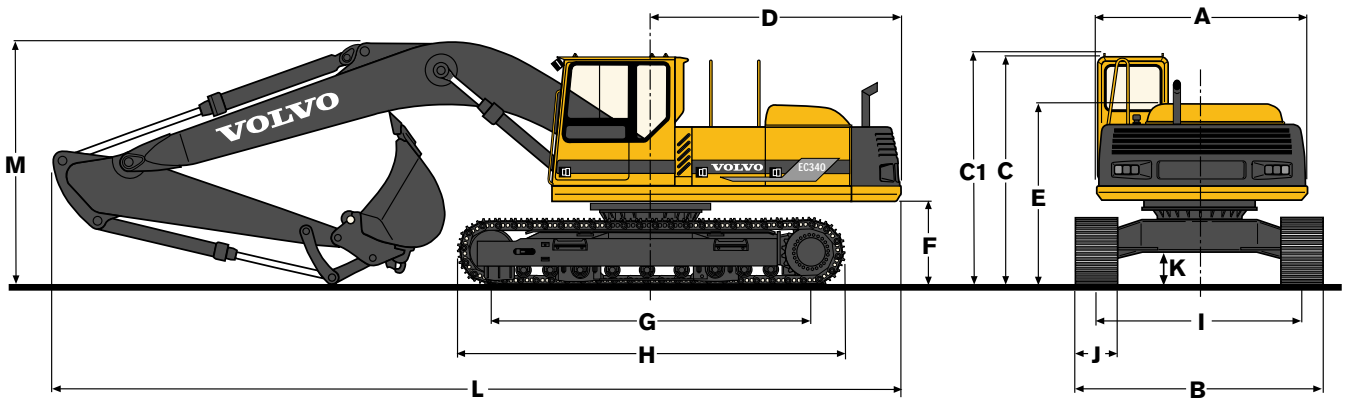
The following important functions are included in the system:

- Power Booster (HLD)** – All digging, lifting and tractive forces are increased
- Swing priority** – Power distribution between boom lift and swing movement to obtain best performance
- Decelerator** – Permits digging speed to be varied during a digging cycle (saves fuel)
- Float position** – For more efficient topsoil stripping and grapple work and better operator comfort and fuel economy

Automatic Decelerator and Speed Sensing Control are also included for optimum utilization of the engine. Hose rupture valves on the boom cylinders are standard.

Pump P1 (swing, bucket, optional equipment)		
Max. pressure	31 MPa	4500 psi
Max. flow	203 l/min	53.6 gpm
Pumps P2 and P3 (boom, stick, bucket, travel motors, optional equipment)		
Max. pressure	31 MPa	4500 psi
Max. pressure with HLD	35 MPa	5080 psi
Max. flow	2 x 253 l/min	2 x 66.8 gpm
Servo pump		
Pressure	6,5 MPa	940 psi
Flow	21 l/min	5.5 gpm
Fan pump		
Pressure	21 MPa	3050 psi
Flow	29 l/min	7.7 gpm

DIMENSIONS



A: 2 950 mm 9'8"	J: 600/700/800/900 mm	
B: ¹⁾ 3 000/3 100/3 200/3 300 mm 9'10"/10'2"/10'6"/10'10"	23.6"/27.6"/31.5"/35.4"	K: 480 mm 18.9"
B: ²⁾ 3 300/3 400/3 500/3 600 mm 10'10"/11'2"/11'6"/11'10"	L: 10 600 mm 34'9"	(6,0 m, 19'8" boom, 2,2 m, 7'3" stick – ME equipment)
C: 3 080 mm 10'1"	L: 10 500 mm 34'5"	(6,0 m, 19'8" boom, 2,4 m, 7'10" , 2,9 m, 9'6" and 3,5 m, 11'6" stick)
C1: 3 130 mm 10'3"	L: 11 300 mm 37'1"	(6,7 m, 22' boom, 2,4 m, 7'10" stick)
D: 3 300 mm 10'10"	L: 11 200 mm 36'9"	(6,7 m, 22' boom, 2,9 m, 9'6" and 3,5 m, 11'6" stick)
E: 2 430 mm 8'	M: 3 330 mm 10'11"	(6,0 m, 19'8" boom, 2,2 m, 7'3" stick – ME equipment)
F: 1 150 mm 3'9"	M: 3 250 mm 10'8"	(6,0 m, 19'8" boom, 2,4 m, 7'10" stick)
G: 4 200 mm 13'9"	M: 3 480 mm 11'5"	(6,0 m, 19'8" boom, 2,9 m, 9'6" stick)
H: 5 130 mm 16'10"	M: 3 540 mm 11'7"	(6,0 m, 19'8" boom, 3,5 m, 11'6" stick)
I: ¹⁾ 2 400 mm 7'10"	M: 3 230 mm 10'7"	(6,7 m, 22' boom, 2,4 m, 7'10" stick)
I: ²⁾ 2 700 mm 8'10"	M: 3 370 mm 11'1"	(6,7 m, 22' boom, 2,9 m, 9'6" stick)
	M: 3 410 mm 11'2"	(6,7 m, 22' boom, 3,5 m, 11'6" stick)

¹⁾ Narrow undercarriage

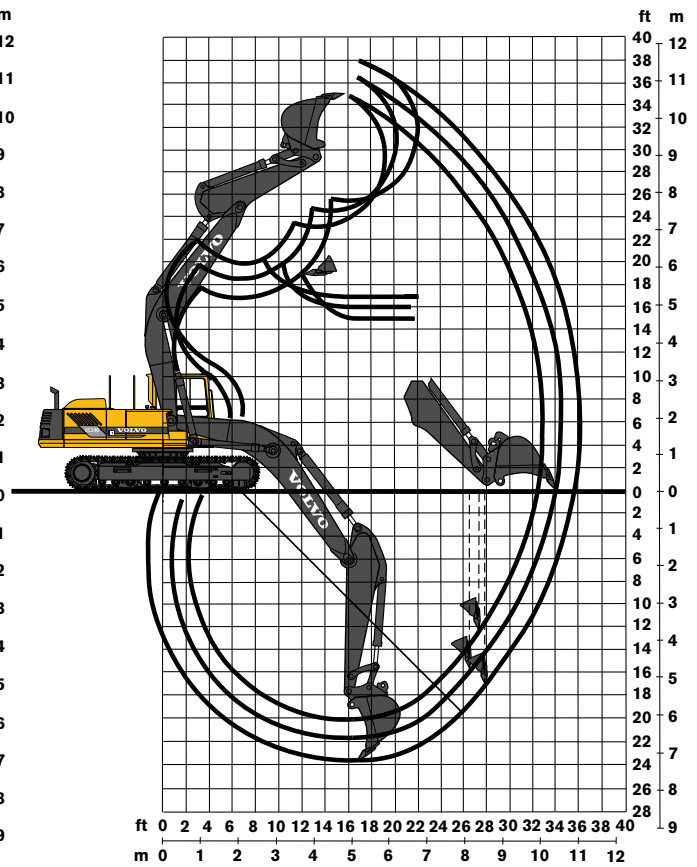
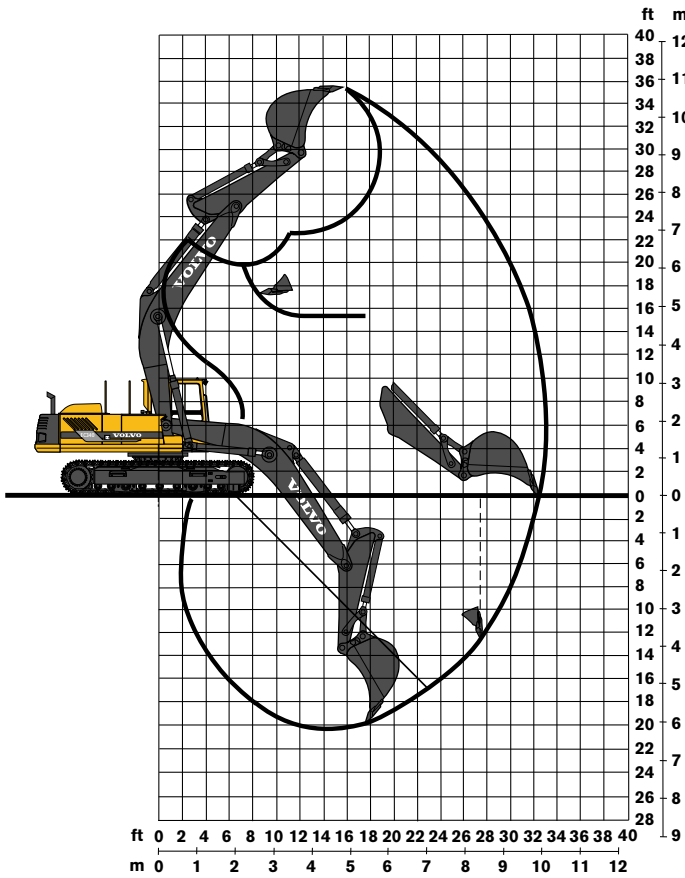
²⁾ Wide undercarriage

ME = Mass Excavation

WORKING RANGES

Monobloc boom 6,0 m, **19'8"** and
stick 2,2 m, **7'3"** – ME digging equipment

Monobloc boom 6,0 m, **19'8"** and
stick 2,4/2,9/3,5 m, **7'10"/9'6"/11'6"**



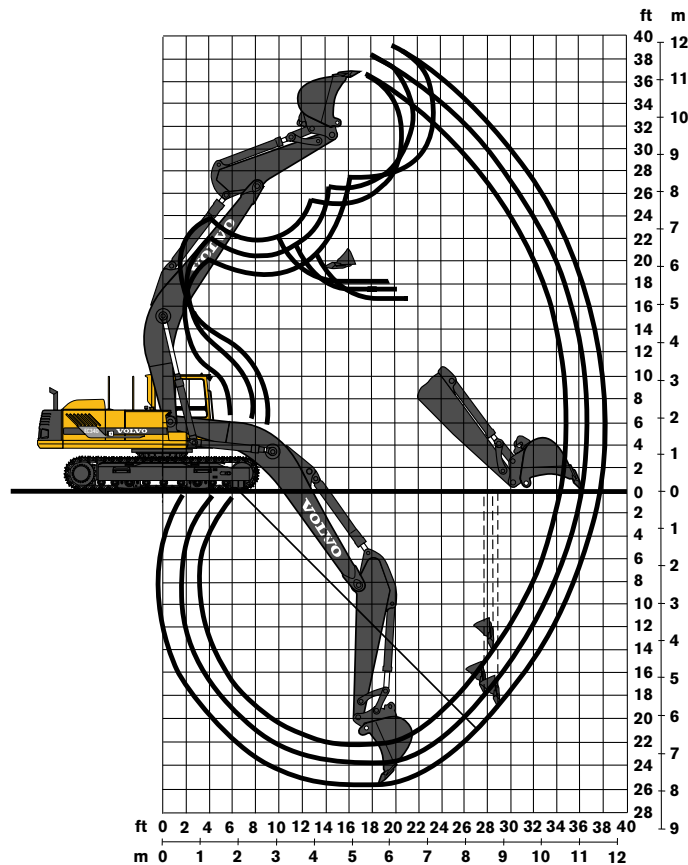
Monobloc boom	6,0 m, 19'8"	6,0 m, 19'8"	6,0 m, 19'8"	6,0 m, 19'8"
Stick	2,2 m, 7'3"	2,4 m, 7'10"	2,9 m, 9'6"	3,5 m, 11'6"
Max. reach	10,2 m, 33'6"	10,0 m, 32'10"	10,6 m, 34'9"	11,1 m, 36'5"
Max. reach at ground level	10,0 m, 32'10"	9,9 m, 32'6"	10,4 m, 34'1"	10,9 m, 35'9"
Max. digging depth	5,8 m, 19'	6,1 m, 20'	6,6 m, 21'8"	7,2 m, 23'7"
Max. height ground – tooth tip	10,7 m, 35'1"	10,5 m, 34'5"	11,1 m, 36'5"	11,3 m, 37'1"
Max. dumping height	6,9 m, 22'8"	7,0 m, 23'	7,5 m, 24'7"	7,7 m, 25'3"
Max. practical dumping height	4,7 m, 15'5"	5,0 m, 16'5"	4,8 m, 15'9"	4,5 m, 14'9"
Practical digging depth for a material with a 45° angle of repose	5,2 m, 17'1"	5,1 m, 16'9"	5,5 m, 18'1"	5,8 m, 19'
Max. vertical digging depth	3,8 m, 12'6"	3,7 m, 12'2"	4,8 m, 15'9"	5,1 m, 16'9"
Min. front swing radius	3,1 m, 10'2"	3,2 m, 10'6"	3,1 m, 10'2"	3,1 m, 10'2"

Digging forces with pin-on GP bucket:	2 500 l, 3.27 yd³		1 300 l, 1.70 yd³	
Breakout force	228 kN, 51,260 lbf	259 kN, 58,230 lbf	259 kN, 58,230 lbf	259 kN, 58,230 lbf
Tearout force	182 kN, 40,920 lbf	191 kN, 42,940 lbf	168 kN, 37,770 lbf	147 kN, 33,050 lbf
Rotation angle, bucket	175°	175°	175°	175°

Max. permitted buckets for quick fit:	Wide undercarriage			
GP bucket (1,8 t/m ³ , 3030 lb/yd³)	–	2 350 l, 3.07 yd³	2 100 l, 2.75 yd³	1 900 l, 2.49 yd³
RB bucket (2,0 t/m ³ , 3370 lb/yd³)	–	2 050 l, 2.68 yd³	1 830 l, 2.39 yd³	1 640 l, 2.15 yd³
Max. permitted pin-on buckets:	Wide undercarriage			
GP bucket (1,8 t/m ³ , 3030 lb/yd³)	2 500 l, 3.27 yd³	2 450 l, 3.20 yd³	2 200 l, 2.88 yd³	1 980 l, 2.59 yd³
RB bucket (2,0 t/m ³ , 3370 lb/yd³)	2 120 l, 2.77 yd³	2 130 l, 2.79 yd³	1 910 l, 2.50 yd³	1 720 l, 2.25 yd³

WORKING RANGES

Monobloc boom 6,7 m, **22'** and
stick 2,4/2,9/3,5 m, **7'10"/9'6"/11'6"**









Monobloc boom	6,7 m, 22'	6,7 m, 22'	6,7 m, 22'
Stick	2,4 m, 7'10"	2,9 m, 9'6"	3,5 m, 11'6"
Max. reach	10,8 m, 35'5"	11,3 m, 37'1"	11,8 m, 38'9"
Max. reach at ground level	10,6 m, 34'9"	11,2 m, 36'9"	11,7 m, 38'5"
Max. digging depth	6,8 m, 22'4"	7,3 m, 23'11"	7,9 m, 25'11"
Max. height ground – tooth tip	11,1 m, 36'5"	11,7 m, 38'5"	11,9 m, 39'1"
Max. dumping height	7,6 m, 24'11"	8,0 m, 26'3"	8,3 m, 27'3"
Max. practical dumping height	5,6 m, 18'4"	5,3 m, 17'5"	5,1 m, 16'9"
Practical digging depth for a material with a 45° angle of repose	5,6 m, 18'4"	6,0 m, 19'8"	6,3 m, 20'8"
Max. vertical digging depth	4,3 m, 14'1"	5,4 m, 17'9"	5,7 m, 18'8"
Min. front swing radius	3,7 m, 12'2"	3,5 m, 11'6"	3,5 m, 11'6"

Digging forces with pin-on GP bucket:	1 300 l, 1.70 yd³		
Breakout force	259 kN, 58,230 lbf	259 kN, 58,230 lbf	259 kN, 58,230 lbf
Tearout force	191 kN, 42,940 lbf	168 kN, 37,770 lbf	147 kN, 33,050 lbf
Rotation angle, bucket	175°	175°	175°

Max. permitted buckets for quick fit:	Wide undercarriage		
GP bucket (1,8 t/m ³ , 3030 lb/yd³)	1 970 l, 2.58 yd³	1 760 l, 2.30 yd³	1 570 l, 2.05 yd³
RB bucket (2,0 t/m ³ , 3370 lb/yd³)	1 710 l, 2.24 yd³	1 540 l, 2.01 yd³	1 370 l, 1.79 yd³
Max. permitted pin-on buckets:	Wide undercarriage		
GP bucket (1,8 t/m ³ , 3030 lb/yd³)	2 060 l, 2.69 yd³	1 860 l, 2.43 yd³	1 670 l, 2.18 yd³
RB bucket (2,0 t/m ³ , 3370 lb/yd³)	1 800 l, 2.35 yd³	1 620 l, 2.12 yd³	1 450 l, 1.90 yd³



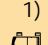
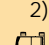


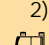


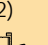

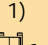


LIFTING CAPACITY (At the stick top without bucket. Unit: pounds.)

 Across carriage  Along carriage	Lifting hook related to ground level	Reach from machine centerline									1) = Narrow undercarriage 2) = Wide undercarriage					
		15'			20'			25'			Max. reach					
		1)	2)		1)	2)		1)	2)		1)	2)		Max. ft		
Mass excavation equipment 6,0 m, 19'8" boom 2,2 m, 7'3" stick 700 mm, 27.6" track shoes	25'		25,100*	25,100*									17,600*	17,600*	18.5	
	20'		25,620*	25,620*		21,690	22,490*						15,980*	15,980*	22.6	
	15'		29,020*	29,020*		20,570	23,480*		14,800	16,000*			14,800	16,000*	25.0	
	10'		28,630	33,580*		19,330	25,150*		14,250	21,000*			13,270	16,110*	26.3	
	5'		27,170	35,840*		18,360	26,310*		13,740	21,150*			12,700	16,800*	26.6	
	0'		26,720	34,410*		17,840	26,030*		13,470	20,390*			12,940	18,740*	25.9	
	-5'		26,710	30,550*		17,770	23,760*						14,110	18,470*	24.2	
-10'		24,090*	24,090*		18,240	18,320*						16,580*	16,580*	21.1		
6,0 m, 19'8" boom 2,4 m, 7'10" stick 700 mm, 27.6" track shoes	25'	23,410*	23,410*	23,410*									15,090*	15,090*	15,090*	18.8
	20'	24,700*	24,700*	24,700*	19,230	21,790*	21,670						13,660*	13,660*	13,660*	22.9
	15'	27,560	28,170*	28,170*	18,180	22,910*	20,560	13,030	15,620*	14,730			12,790	13,640*	13,640*	25.3
	10'	25,040	32,850*	28,780	17,010	24,710*	19,320	12,490	20,640*	14,160			11,490	14,650*	13,030	26.5
	5'	23,480	35,590*	27,180	16,050	26,060*	18,320	11,990	20,950*	13,630			10,940	15,590*	12,440	26.8
	0'	22,920	34,710*	26,610	15,490	26,020*	17,750	11,680	20,420*	13,320			11,090	17,850*	12,640	26.1
	-5'	22,870	31,200*	26,540	15,360	24,050*	17,620						12,050	18,730*	13,740	24.4
-10'	23,210	25,110*	25,110*	15,710	19,200*	17,980						14,500	17,240*	16,550	21.4	
6,0 m, 19'8" boom 2,9 m, 9'6" stick 700 mm, 27.6" track shoes	30'	14,710*	14,710*	14,710*									14,110*	14,110*	14,110*	15.2
	25'				15,420*	15,420*	15,420*						11,510*	11,510*	11,510*	21.3
	20'	21,160*	21,160*	21,160*	19,350	20,170*	20,170*						10,870*	10,870*	10,870*	24.9
	15'	26,320*	26,320*	26,320*	18,400	21,660*	20,800	13,000	18,380*	14,700			10,370*	10,370*	10,370*	27.2
	10'	25,930	31,410*	29,770	17,260	23,820*	19,600	12,450	19,870*	14,130			10,270	11,150*	11,150*	28.3
	5'	24,030	35,110*	27,790	16,230	25,630*	18,540	11,910	20,570*	13,570			9,820	11,590*	11,190	28.6
	0'	23,140	35,470*	26,870	15,570	26,160*	17,850	11,530	20,530*	13,180			9,960	13,410*	11,380	27.9
	-5'	22,920	32,920*	26,640	15,300	24,880*	17,580	11,410	19,020*	13,050			10,720	15,760*	12,260	26.3
-10'	23,150	27,750*	26,870	15,450	21,150*	17,730						12,540	16,360*	14,330	23.6	
-15'	18,740*	18,740*	18,740*									13,610*	13,610*	13,610*	19.1	
6,0 m, 19'8" boom 3,5 m, 11'6" stick 700 mm, 27.6" track shoes	25'				14,120*	14,120*	14,120*						8,720*	8,720*	8,720*	23.4
	20'				16,480*	16,480*	16,480*	12,450*	12,450*	12,450*			8,370*	8,370*	8,370*	26.7
	15'	21,720*	21,720*	21,720*	18,600	19,910*	19,910*	12,990	16,410*	14,700			8,310*	8,310*	8,310*	28.8
	10'	26,570	28,930*	30,470	17,390	22,330*	19,760	12,380	18,770*	14,070			8,220*	8,220*	8,220*	30.0
	5'	24,280	33,520*	28,070	16,230	24,560*	18,560	11,760	19,790*	13,430			8,810	9,010*	9,010*	30.2
	0'	22,970	35,210*	26,710	15,390	25,700*	17,690	11,280	20,210*	12,930			8,860	10,030*	10,030*	29.6
	-5'	22,490	33,870*	26,210	14,960	25,180*	17,250	11,030	19,470*	12,670			9,440	11,720*	10,830	28.1
-10'	22,550	29,860*	26,270	14,950	22,540*	17,230	11,110	16,590*	12,760			10,850	15,210*	12,450	25.5	
-15'	22,590*	22,590*	22,590*	15,420	16,470*	16,470*						14,140	14,520*	14,520*	21.4	

* Load capacity limited by machine's hydraulic lifting capacity.

The above values have been calculated in compliance with ISO standard 10567. They do not exceed 87 % of hydraulic lifting capacity or 75 % of tipping load, with the machine on firm, level ground. Working pressure with HLD = 35 MPa (350 bar/5080 psi)

LIFTING CAPACITY (At the stick top without bucket. Unit: pounds.)

 Across carriage  Along carriage	Lifting hook related to ground level	Reach from machine centerline											Max. ft	
		15'			20'			25'			Max. reach			
		1) 	2) 		1) 	2) 		1) 	2) 		1) 	2) 		
6,7 m, 22' boom 2,4 m, 7'10" stick 700 mm, 27.6" track shoes	25'				19,670*	19,670*	19,670*				14,800*	14,800*	14,800*	22.1
	20'	23,660*	23,660*	23,660*	18,770	20,060*	20,060*	13,210	17,310*	14,910	12,690	14,170*	14,170*	25.6
	15'	26,050	28,040*	28,040*	17,450	21,730*	19,790	12,620	18,610*	14,290	10,690	13,990*	12,140	27.8
	10'	23,290	33,350*	26,990	16,110	23,770*	18,390	11,920	19,410*	13,570	9,630	14,080*	10,980	29.0
	5'				15,090	25,160*	17,340	11,320	20,010*	12,940	9,210	15,550*	10,530	29.2
	0'	21,970	32,630*	25,680	14,560	25,160*	16,790	10,930	19,920*	12,550	9,260	17,010*	10,610	28.6
	-5'	21,870	29,840*	25,550	14,410	23,640*	16,650	10,840	18,660*	12,450	9,920	16,750*	11,370	27.0
	-10'	22,080	25,210*	25,210*	14,630	20,360*	16,860				11,520	15,930*	13,200	24.3
-15'	17,980*	17,980*	17,980*	13,630*	13,630*	13,630*				13,630*	13,630*	13,630*	20.0	
6,7 m, 22' boom 2,9 m, 9'6" stick 700 mm, 27.6" track shoes	25'				17,960*	17,960*	17,960*				11,510*	11,510*	11,510*	24.4
	20'				18,730*	18,730*	18,730*	13,210	16,990*	14,920	11,030*	11,030*	11,030*	27.6
	15'	26,280*	26,280*	26,280*	17,780	20,650*	20,150	12,650	17,700*	14,330	9,480	10,550*	10,550*	29.7
	10'	24,280	31,650*	28,050	16,440	22,990*	18,760	11,950	18,750*	13,610	8,620	10,690*	9,870	30.8
	5'	22,490	30,910*	26,210	15,330	24,780*	17,610	11,310	19,630*	12,950	8,270	11,580*	9,500	31.0
	0'	21,870	34,080*	25,580	14,650	25,290*	16,910	10,860	19,870*	12,490	8,320	12,810*	9,570	30.4
	-5'	21,760	31,580*	25,450	14,380	24,290*	16,640	10,660	19,070*	12,280	8,860	15,050*	10,190	28.9
	-10'	21,960	27,460*	25,640	14,460	21,620*	16,720	10,780	16,590*	12,400	10,110	15,000*	11,620	26.4
-15'	21,050*	21,050*	21,050*	14,970	16,410*	16,410*				12,850	13,340*	13,340*	22.6	
6,7 m, 22' boom 3,5 m, 11'6" stick 700 mm, 27.6" track shoes	30'				13,000*	13,000*	13,000*				9,620*	9,620*	9,620*	21.9
	25'				15,650*	15,650*	15,650*	11,910*	11,910*	11,910*	8,450*	8,450*	8,450*	26.5
	20'				17,010*	17,010*	17,010*	13,270	15,550*	14,990	8,040*	8,040*	8,040*	29.5
	15'	23,660*	23,660*	23,660*	18,030	19,050*	19,050*	12,660	16,460*	14,350	8,050*	8,050*	8,050*	31.4
	10'	24,990	29,150*	28,810	16,600	21,580*	18,940	11,900	17,710*	13,570	7,740	8,420*	8,420*	32.4
	5'	22,650	33,180*	26,390	15,330	23,750*	17,630	11,180	18,840*	12,820	7,400	9,090*	8,540	32.6
	0'	21,550	34,070*	25,240	14,460	24,790*	16,730	10,620	19,410*	12,250	7,380	9,660*	8,540	32.1
	-5'	21,200	32,540*	24,880	14,030	24,410*	16,290	10,310	19,090*	11,930	7,780	11,210*	9,010	30.7
-10'	21,290	29,190*	24,970	13,980	22,460*	16,240	10,280	17,440*	11,910	8,760	14,300*	10,140	28.3	
-15'	21,770	23,750*	23,750*	14,310	18,450*	16,570				10,790	13,390*	12,440	24.8	
6,7 m, 22' boom 3,5 m, 11'6" stick 900 mm, 35.4" track shoes	30'				13,000*	13,000*	13,000*				9,620*	9,620*	9,620*	21.9
	25'				15,650*	15,650*	15,650*	11,910*	11,910*	11,910*	8,450*	8,450*	8,450*	26.5
	20'				17,010*	17,010*	17,010*	13,560	15,550*	15,320	8,040*	8,040*	8,040*	29.5
	15'	23,660*	23,660*	23,660*	18,400	19,050*	19,050*	12,940	16,460*	14,670	8,050*	8,050*	8,050*	31.4
	10'	25,520	29,150*	29,150*	16,970	21,580*	19,370	12,190	17,710*	13,890	7,950	8,420*	8,420*	32.4
	5'	23,190	33,180*	27,010	15,700	23,750*	18,050	11,460	18,840*	13,150	7,610	9,090*	8,780	32.6
	0'	22,090	34,070*	25,870	14,830	24,790*	17,160	10,910	19,410*	12,580	7,590	9,660*	8,790	32.1
	-5'	21,740	32,540*	25,510	14,400	24,410*	16,710	10,590	19,090*	12,260	8,000	11,210*	9,260	30.7
-10'	21,830	29,190*	25,600	14,350	22,460*	16,660	10,570	17,440*	12,230	9,010	14,300*	10,410	28.3	
-15'	22,310	23,750*	23,750*	14,680	18,450*	17,000				11,070	13,390*	12,760	24.8	

* Load capacity limited by machine's hydraulic lifting capacity.

The above values have been calculated in compliance with ISO standard 10567.
They do not exceed 87 % of hydraulic lifting capacity or 75 % of tipping load,
with the machine on firm, level ground. Working pressure with HLD = 35 MPa (350 bar/5080 psi)

STANDARD EQUIPMENT

Engine and electrical system

Contronic E – computerized monitoring and alarm system
 Battery disconnect and main fuel cock
 Decelerator – electronic idling speed
 Automatic idling speed
 Electronically controlled pump regulation (SSC)
 3-stage air filter with indicator
 Hour meter
 Tachometer
 Fuel level gauge
 Temperature gauge for coolant and hydraulic oil
 Electric preheating coil
 24 V electrical system with 2 batteries
 Well-protected electrical system based on printed circuit board
 Water separating fuel filter

Undercarriage

Swing circle in oil bath
 Hydraulic track tensioner
 Derailing shields, 3 per side
 Eyes for towing and tying, 4 pcs

Superstructure

Counterweight 6 300 kg, **13,890 lb**
 Access way with ladder

Safety and comfort

Safety bar to prevent accidental actuation via levers and pedals
 Hose rupture valve on boom cylinder
 Overload alarm
 Working lights(halogen):
 4 front, 1 rear
 Interior lighting in cab and engine compartment
 Rear-view mirrors:1 interior, 3 exterior
 Cab heating and filtered air intake
 Ergonomic, electrically heated operator's seat with seat belt
 Skylight of special plastic
 Sliding side window in cab door
 Emergency exit through rear window
 Tinted window glass (clear front)
 Interior sun visor
 Upper and lower windscreen wipers with intermittent function
 Windscreen washer

Air horn
 Silencer with spark arrester
 Oil draining cock on the engine
 Selectable swing holding brake automatics

Hydraulic system

Float position on boom
 3 variable axial piston pumps
 Mode Selector
 Power Boost (HLD)
 Wrist type control levers with four switches each
 Hydraulic cylinders with internal end dampening
 Swing priority
 Two speed travel motors with brake valves and brakes of multi-disc type
 Return filter of full flow type 13 µm (abs), 2000 h exchange interval
 Servo accumulator
 Hydraulically driven, thermostatically controlled cooling fan for the hydraulic oil cooler

Digging equipment

Spherical steel link bearings in all large pivot points
 Safety lifting hook – 14 t, **30,860 lb**
 Friction-welded piston rod eyes
 Attachment points for extra hydraulics

ALTERNATIVE EQUIPMENT

Undercarriage

Narrow/long
 Wide/long
 Top rollers
 Skid rails

Track shoes

600/700/800/900 mm,
23.6"/27.6"/31.5"/35.4" track shoes with triple grousers and mud holes

Digging equipment

Boom
 6,0 m, **19'8"** monobloc
 6,7 m, **22'** monobloc

Stick

2,2 m, **7'3"** (Mass Excavation)
 2,4 m, **7'10"**
 2,9 m, **9'6"**
 3,5 m, **11'6"**

Buckets

Pin-on buckets and buckets for quick fit S3

GP-bucket
 2 300 l, **3.0 yd³**
 2 100 l, **2.75 yd³**
 1 900 l, **2.49 yd³**
 1 700 l, **2.22 yd³**

Rock bucket (RB)

2 000 l, **2.62 yd³**
 1 800 l, **2.35 yd³**
 1 600 l, **2.09 yd³**
 1 400 l, **1.83 yd³**

Pin-on bucket

GP-bucket (Mass excavation)
 2 500 l, **3.27 yd³**

Hydraulic quick fit S3

OPTIONAL EQUIPMENT

Engine and electrical system

Diesel-powered cab and engine heater with digital timer
 Electric engine heater, 220 V
 Protective net in front of the cooler
 Alternator 80 A
 Oil bath filter for improved filtering of the intake air
 Coolant filter

Undercarriage

Lockable storage box

Safety and comfort

Protective net for windscreen
 Protective bars for skylight (FOPS 3449-approved)
 Protective cab roof (FOGS ISO 10262-approved)
 Fire extinguisher
 Rotating warning beacon
 Vandal protective guards
 Extra headlights on boom
 Hydraulically powered fuelling pump, 90 l/min, **23.8 gpm** with overfilling protection
 Extra circulation pump for heating system – interval heating

Extra hose rupture valves – stick cylinder
 Exterior sun visor
 Rear window jalousie
 Air conditioning
 Microfilter for cab
 Food heater
 Radio with tape player
 Tool kit
 Service walk
 Travel alarm/Swinging alarm

Hydraulic system

Biodegradable hydraulic oil
 Hydraulic equipment for:
 A. Slope bucket/rotator
 B. Hammer/shears/grapple/clam shell
 C. Quick fit
 D. Hand tool
 E. Generator for lifting magnet (4th working pump)

Under our policy of continuous product improvement, we reserve the right to change specifications and design without prior notice. The illustrations do not necessarily show the standard version of the machine.

VOLVO

**Volvo Construction
 Equipment**

One West Pack Square, Asheville, NC 28801

Ref. No. 22 1 430 0100 American English
 Printed in USA 97.03 – 3,0 EXC