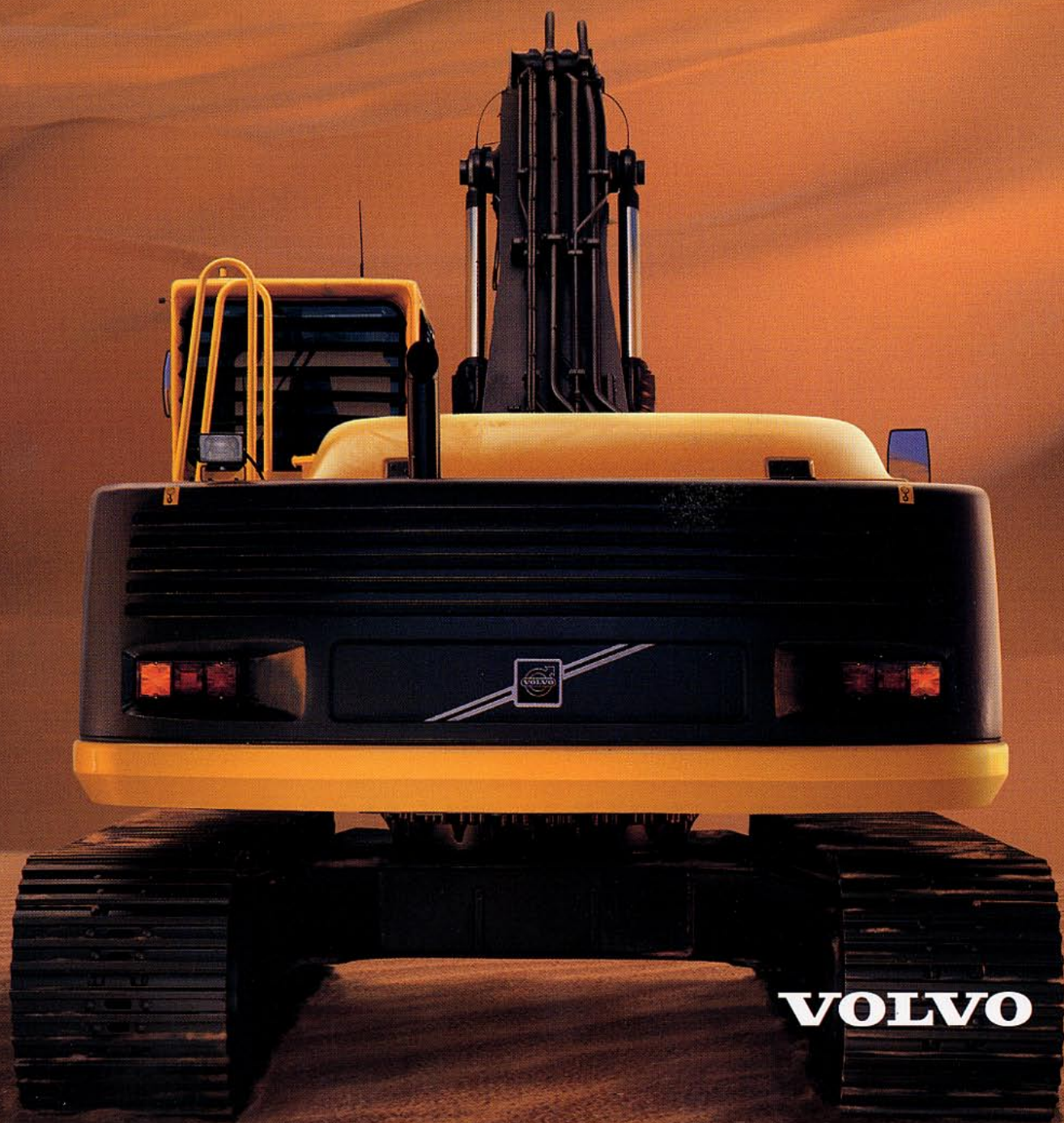
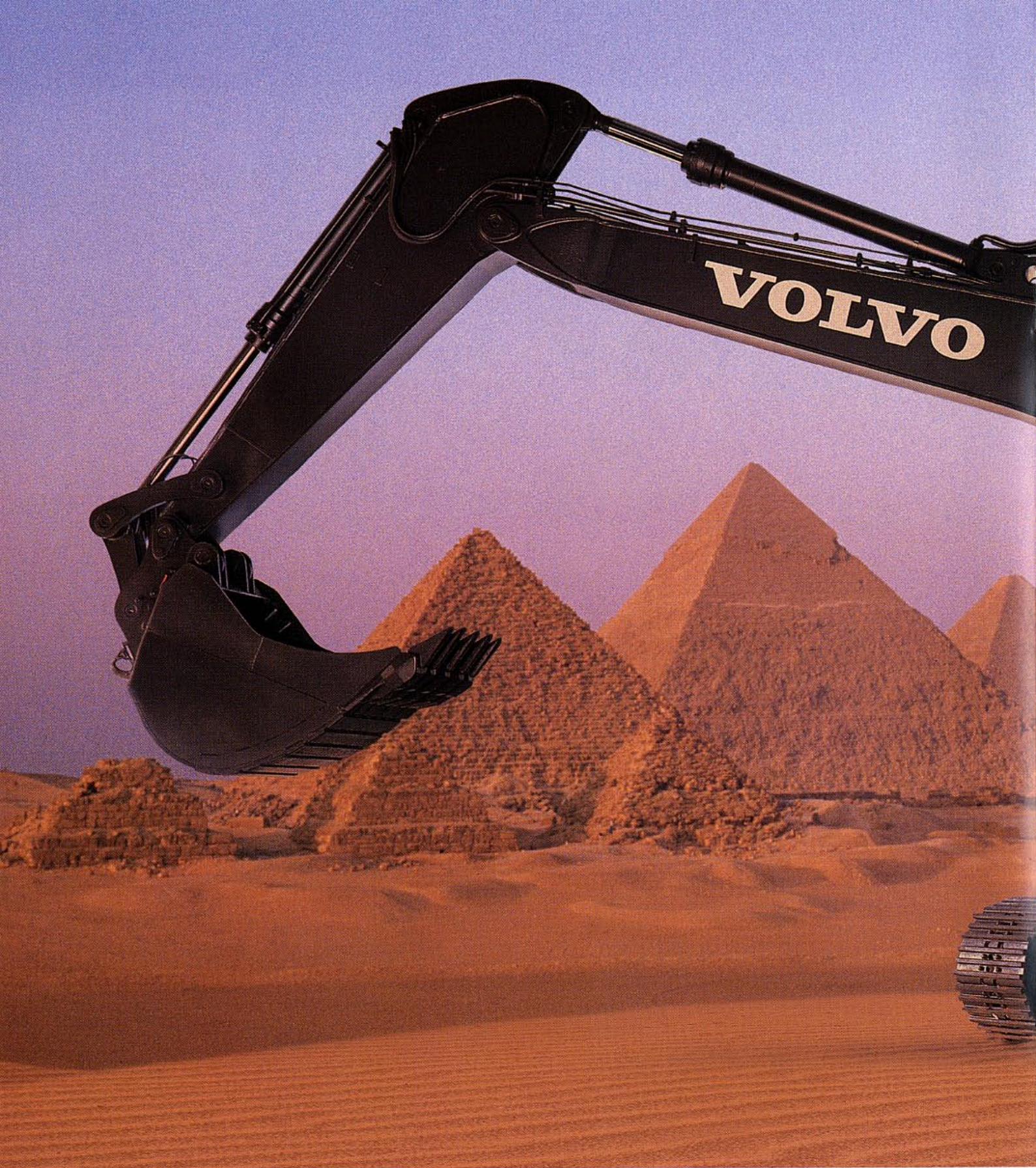


THE EXCAVATOR BY VOLVO



VOLVO



EVOLUTION BY VOLVO

Life is tough for an excavator named Volvo. We know that you demand a lot – you should be able to demand more of us. That's why we started building the new Volvo machines on a firm foundation: Åkerman's rock-solid know-how

and rugged durability. We added to this a massive development program of our own. Styling, design, engineering, labour-saving features, the unique hydraulic system ... rarely have so many strong innovations been introduced at one



time. Nor was anything left to chance in the testing program. First advanced computer simulations, then thousands of hours of gruelling practical trials all over the world. In conditions ranging from arctic cold to dusty heat. Now we are ready for the most important test of all: Your judgement of a brand new series of excavators.

Machines with the Volvo name on the boom and Volvo's entire organization behind them. We are confident that you will arrive at the same judgement as our test operators. Volvo stands for performance on an entirely new level. Under all conditions.



INNOVATIVE ENGINEERING AND SOLID TRADI



Float position is standard – a solution that gives you a number of advantages. It reduces wear, and capacity is increased.

The machine's modern look with the boomerang-shaped boom, dual boom cylinders and rounded full-height counterweight are probably the first things you notice. Sure, it's a nice-looking machine, you think. As well you might. But what it's really all about is packaging peak performance in the most effective manner possible. You'll notice this as soon as you experience the new

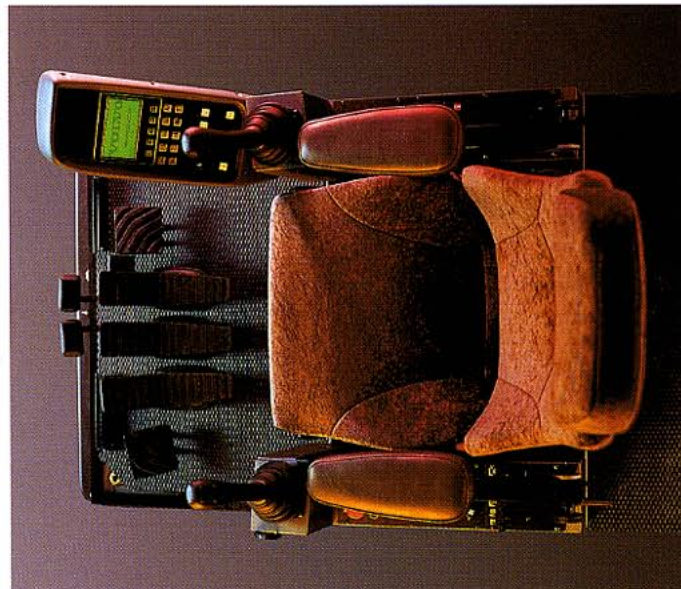
Volvo machines in action. Try them out yourself. Dig, doze, slope, tear, lift ... We think you'll agree with the judgements of our test operators. The new Volvo excavators raise the bar several notches. Whether you're talking about fast digging movements, superb stability, impressive lifting force or swing movements.

NEW HYDRAULIC SYSTEM LIKE BLOOD CIRCULATION

If the hydraulic system is like the machine's blood circulation, the hydraulic pumps are like its heart. In fact, the machine has three powerful "hearts", one for each digging function. A fourth can be chosen for special optional items



TIONS COME TOGETHER



The operator's station has everything in the way of labour-saving technology. All pre-start checks take place from here.

the machine's class. The result – very high digging precision and capacity.

HIGHER PERFORMANCE – LOWER EMISSIONS

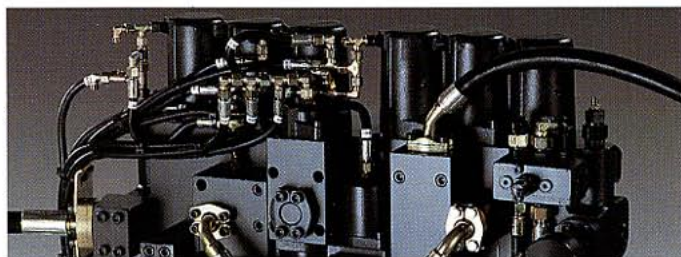
Beneath the bonnet you find Volvo's renowned low-emission diesel engine, developed for our heavy trucks and tailored to meet the demands on a modern excavator. For example when it comes to torque and power curves. Turbo and inter-cooler are included. The engine delivers more power than you're used to – in fact, it's the biggest in its class. This enables the machine to maintain a high speed even under heavy loads, and digging capacity is greater. All of this without detriment to the environment – thanks to the low-emission engine.

BEST DIGGING FORCES IN ITS CLASS?

Take a close look at the dimensions of the bucket and dipper arm cylinders. There you will find the explanation for the new machines' outstanding digging force and good digging geometry. The bucket's rotational angle is all of 175 degrees – and yet the HLD mode enables you to work with full digging force by increasing the working pressure by 4.0 MPa. The HLD mode also provides impressive hydraulic lift capacity. And thanks to the quickfit device the bucket can always be detached easily for heavy lifts. This increases the machine's lift capacity by the weight of the bucket.

WORK WITH MAXIMUM FLEXIBILITY

Flexibility was another goal that gave our product development engineers something to challenge their minds. Here are some of the solutions they came up with: You can choose between two different monobloc booms. Each model has four different dipper arm lengths. In addition, the bigger models can be fitted with short ME (Mass Excavation) digging equipment. You can get track under-carriages of different widths. The hydraulics for optional equipment are easy to customize and install. A large selection of new buckets is included in the range.



New hydraulic system with three pumps as standard. A fourth can be chosen for special optional items of equipment.

of equipment, such as a scrap magnet or a compressor. The available flows supplied by these pumps are the largest in

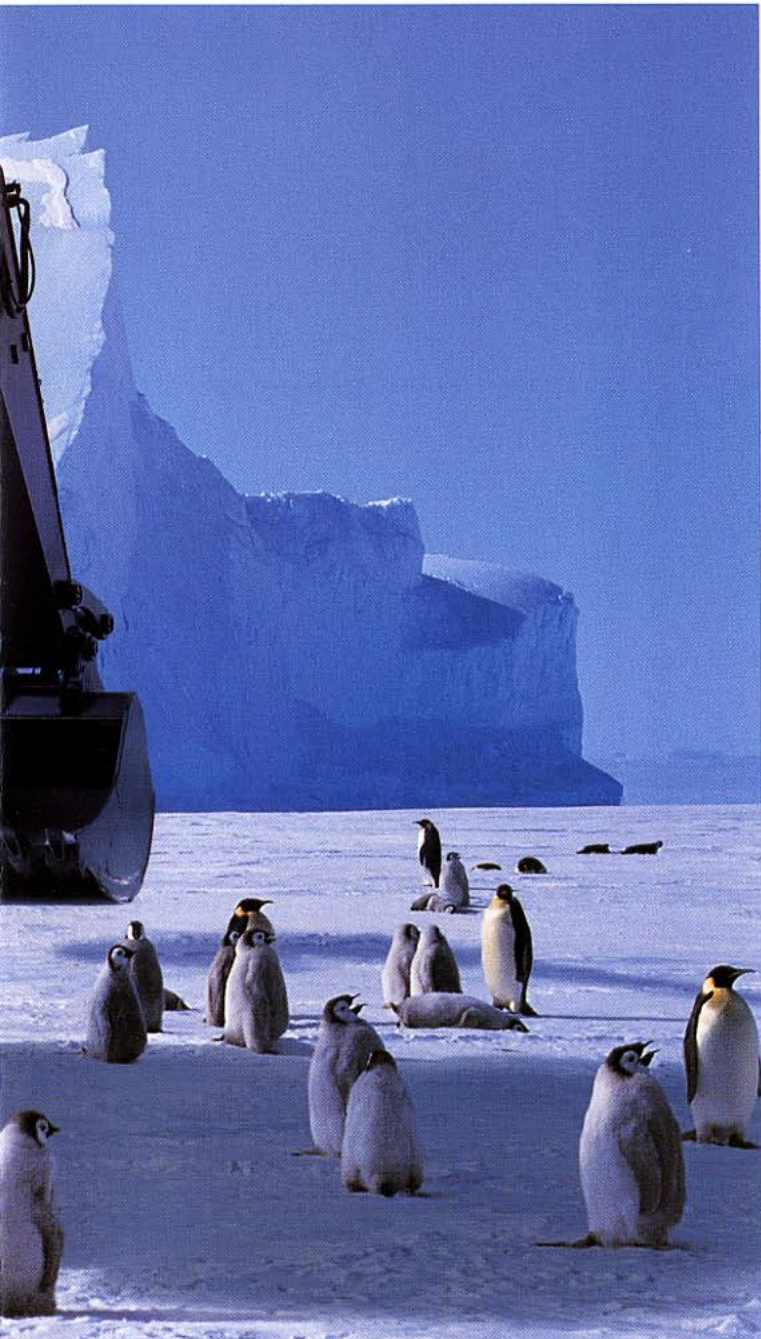


BORN AND RAISED WHERE ONLY THE F

UNDAUNTED BY ARCTIC COLD

Cold, damp, hard and frozen ground ... these are daily fare for a Volvo. It's not for nothing that we're known for building cars, trucks, aircraft engines etc. with outstanding durability and long life. Volvo's new excavators naturally live up to the proud traditions of their rolling and flying relatives. Many people may think that the testing program we put our newcomers through went too far. That the demands were too tough. Too tough or not – now we know. These are machines for the whole world, for all climates and working conditions.

Imagine a dark, frigid winter morning. The temperature has crept down to minus 35 Celsius (minus 31 Fahrenheit). Everything is snow-covered, frozen solid, ice-cold. Nothing is moving – except a lonely excavator which digs in the rock-hard ground hour after hour, day after day, week after week. Need we say that the machine came through its winter tests with flying colours? It had the precision and speed. It had the strength. It had the ability to penetrate the hardest ground there is. And all the time it kept the cozy cab toasty warm.



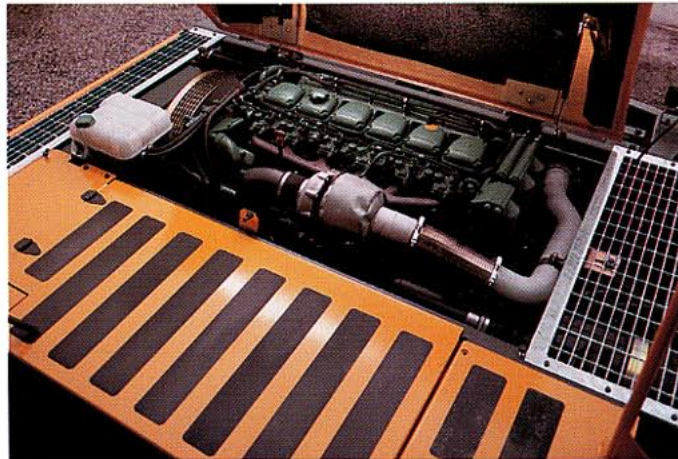
HARDEST SURVIVE

HIGH ALTITUDE NOT A PROBLEM

If you work in the Alps, the Andes or other high-lying regions of the earth, Volvo's new excavators won't let you down. You can work without worries at altitudes of up to 2,000 m above sea level without having to re-tune the engine – the power drawn by the pumps is automatically adjusted downward.

AT THEIR BEST WHEN THE HEAT IS AT ITS WORST

Biting cold and high altitudes were just the start. More challenges awaited our test machines and operators. We

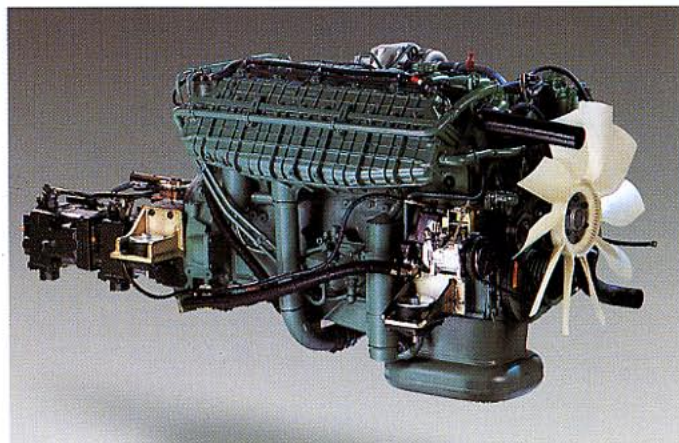


The power pack is positioned low in the extremely strong frame – which also gives you better visibility for easier and safer work. Travel speed is 5 km/h.

placed some machines in the dustiest and most sun-baked region we could find. It turned out to be the interior of Spain with daytime temperatures of around 45 degrees Celsius (113 degrees Fahrenheit). We got the answers we were looking for – the triple engine air filter, for example, is totally unfazed by extremely dusty worksites.

A SAFE AND ENVIRONMENTALLY SOUND WORKSTATION

Safety aspects have also been rigorously tested. What else would you expect of a Volvo? The rugged cab has passed comprehensive FOPS tests according to ISO standard 3449. The side impact protection system in the outer sides of the frame consists of a strong steel beam that sticks out from the side of the body. The entire underside of the superstructure is covered by rugged protection plates. Approximately 20% of the machine's operating weight is in the counterweight – this provides the right stability for safe lifts and big buckets. 95% of the machine is recyclable, all plastic parts are marked, you can choose biodegradable hydraulic oil, etc.



Volvos low-emission diesel engine; higher performance and lower emissions.

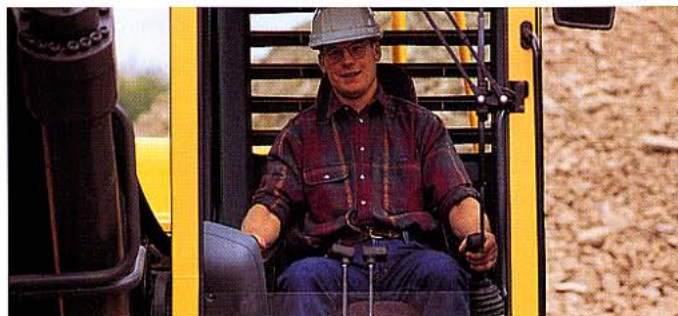


AN INSPIRING VIEW OF YOUR EVERYDAY WORK

Comfortable as a luxury hotel may be exaggerating a bit – the cab isn't equipped with a bed. But otherwise there are amenities you may not have expected on high-production excavators. The reason is our firm conviction that you should feel good. During the job and after the job. If you can work in comfort you can also perform better. You feel more inspired, your productivity increases.

TAKE A SEAT IN THE COMFIEST AND SAFEST CAB IN THE WORLD OF EXCAVATORS

We call this spacious cab the Volvo Care Cab. A moment behind the levers will explain why. Start by trying all the



The comfortable cab has a volume of 2.3 m³. It has all the space you need to work in comfort, as well as for your personal belongings. The windscreen can be rolled up into the roof, the lower part is removable. The side window can also be opened.



WORKING ENVIRONMENT

adjustment options of the seat and control levers. The seat can be adjusted in height and fore-and-aft. The spring suspension can be adjusted to the operator's weight. The backrest, armrest and lumbar support, which reduces the risk of backache, can be adjusted individually. Electrically heated seat and lap belt are standard. Notice that the seat is located far forward in the machine – that's where you get the best view of your work. Tinted glass reduces disturbing heat from sunlight – the windscreen has clear glass to avoid irritating reflections. No moulding obstructs your vision. The sound level is pleasantly low – often you hear the stereo better than the low-emission engine. Heating and ventilation are in a class of their own – dust is filtered

out, 14 nozzles distribute the air. Air conditioning (CFC-free) is available as an option.

AS CAREFULLY ARRANGED AS A COCKPIT

The instrumentation includes a graphical display and 18 different indicating lamps, with monitoring of oil level, coolant level and air filter, for example. On the display you can adjust pre-set engine speeds, carry out troubleshooting etc. The system is prepared for advanced programming, and Contronic testing equipment can be connected. The display also provides warning in plain text of malfunctions in the engine and hydraulic system. Here the operator can also read important messages, for example when it is time for service, how far the fuel will last or when the engine heater is turned on or off. The track undercarriage is operated by means of rocker pedals, enabling you to manoeuvre easily and agilely in confined spaces and with simultaneous digging movements. Mode Selector for the following modes is standard: HLD for better digging, lifting and tractive forces, decelerator for engine speed control during the digging cycle, float position for increased capacity and topsoil stripping, and swing priority for the best match between boom lift and swing.

THE DAY-TO-DAY WORK IS SIMPLER

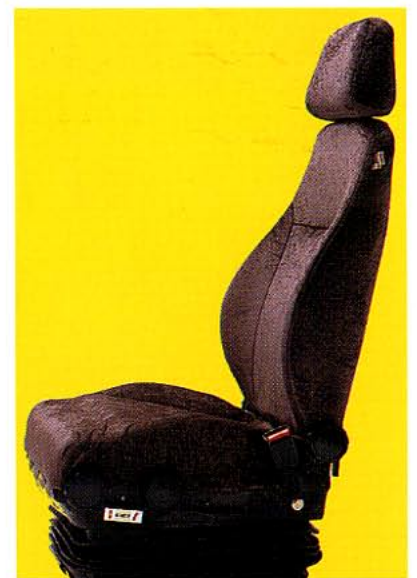
The fuel tank is equipped with an extra large and lockable cap. The tank has enough capacity for three days' normal operation. Filters are easily accessible from above. All lube points are gathered in central lube stations which you can easily reach from the ground.

QUICK CHANGING OF ATTACHMENTS OR BUCKETS

Hydraulic quickfit with safe two-hand operation is available. A wide range of buckets and attachments helps you customize the machine to your work duties.

AGILITY ITSELF

You get a shorter swing radius thanks to the full-height counterweight. A solution that enables you to work efficiently even on confined areas. The engine silencer is also built into the counterweight.



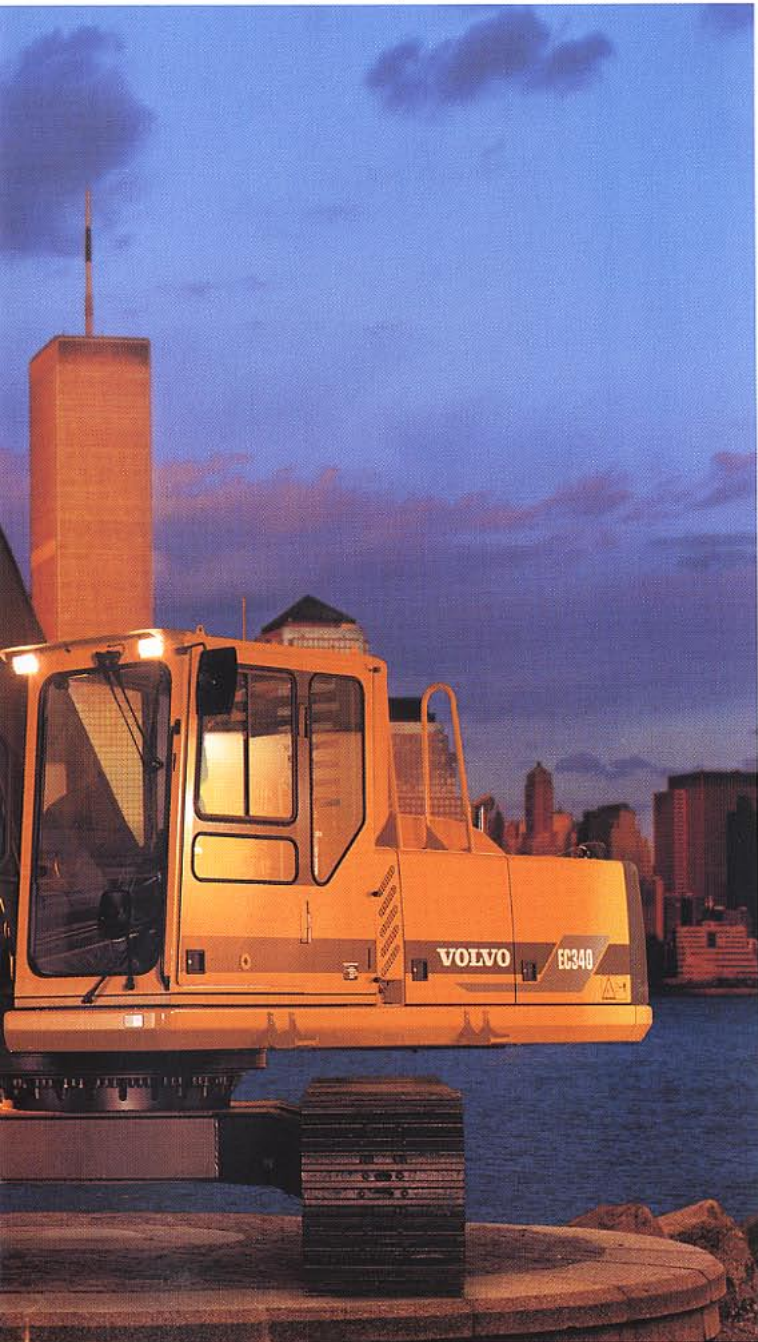
The seat has all the adjustment options you need for an ideal working position.



IT IS OUR DUTY TO ENHANCE YOUR P

Are you thinking about choosing a Volvo? Then you should know that you are choosing much more than the strength of a series of unusually efficient excavators. Machines in which performance, capacity, operator environment and flexibility interact for consistently high productivity. Machines built for all conditions. You are also choosing the strength of Volvo's worldwide organization. An organization that has been built up over a long time and with one goal in mind: To help you make a better deal. No one knows your business better than you do. And no one knows





PROFITABILITY

more about Volvo and Volvo excavators than we do. Together we can find the optimal solution for you. Or to put it better: We can find the combination of solutions that helps you to produce more. More cost-effectively.

YOUR PROFITABILITY IS THE GOAL

We should be able to offer you the right machine with the right specifications for your work. We should be able to offer you the right financing, training, professional service and quick availability of spare parts ... we have, for exam-



Volvo knows machines, Volvo knows service, spare parts and the other professional services you need.

ple, a common parts organization for both Volvo Trucks and Volvo Construction Equipment. Regard us as a complete business partner, with all of Volvo's know-how and resources behind us.

WELCOME TO VOLVO

And finally – we suggest that you take a seat in an excavator from Volvo for a proper test. After that we can discuss how we and you together can make your new excavator a truly safe investment.





TECHNOLOGY ON HUMAN TERMS

When you choose products from Volvo Construction Equipment, you get not only high productivity and availability, but also the security and continuity for which the name Volvo stands. The machines are built with consideration for both mankind and the environment, and the width of the product range gives you every opportunity to choose the most efficient machine combinations. The security lies not only in Volvo's service and parts organization, but also in the company's research and product development, which ensures you continuous access to cutting-edge technology. This in turn ensures that your machine will achieve the highest standards of performance in demanding jobs for a long time to come.

Volvo Construction Equipment includes the brands Volvo, Euclid, Zettelmeyer, Pel-Job and Mecalac.

Under our policy of continuous product improvement, we reserve the right to change specifications or design without prior notice. Illustrations do not necessarily show standard versions of the machines.

VOLVO
Volvo Construction
Equipment

Ref.No. 21 2 430 0112
Printed in Sweden 97.04-4,0
Tre Punkter AB, Göteborg 1997

English
EXC