

SAMSUNG

SE240 LC-3 NLC-3

CRAWLER EXCAVATOR SERIES-3



Flywheel Horsepower ;	170 ps	125 kW
Bucket Capacity ; SAE	1.08 m³	1.41 yd³
	CECE 0.95 m³	1.24 yd³
Operating Weight ; LC-3	23500 kg	51810 lb
	NLC-3 24200 kg	53350 lb

SE240LC-3 SE240NLC-3

Advanced engineering

State-of-the-art technology

Cutting edge ergonomics

World class quality

Outstanding productivity

Unbeatable performance

Advanced Technology



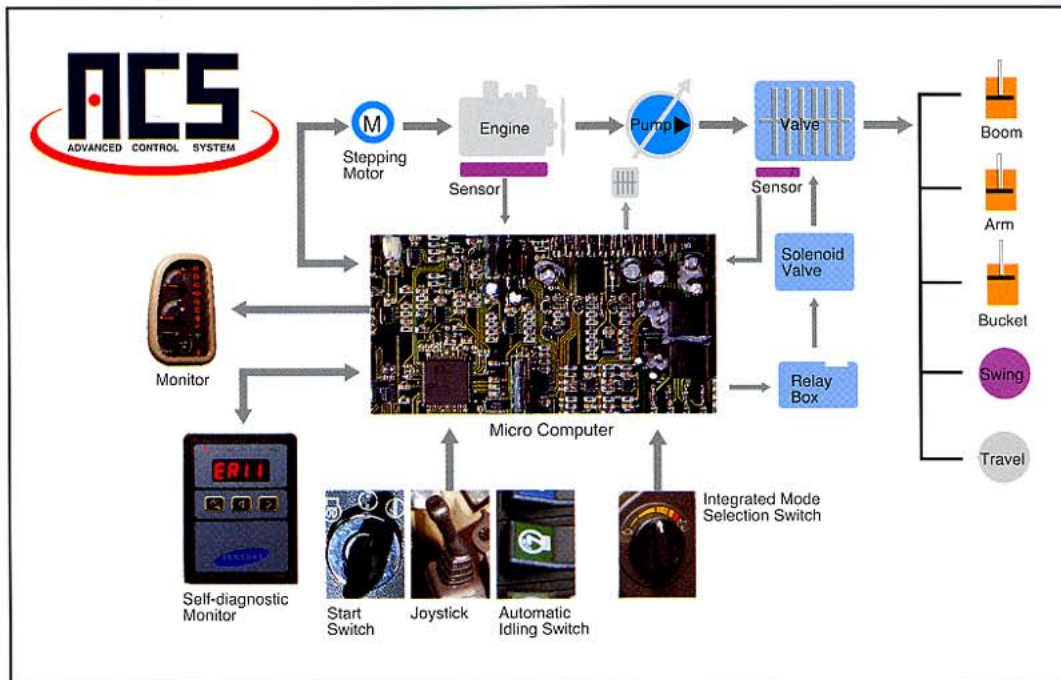


Technology in Action!

Advanced Technology

ACS (Advanced Control System)

Balances engine power with hydraulic pump output over a wide range of working conditions to provide maximum production with minimal fuel consumption. The integrated mode selection switch automatically sets the engine power and work mode for optimum machine performance. The ACS self-diagnostic mode analyzes information from vital sub-systems and identifies the source of a problem to facilitate troubleshooting.



Boom and Arm Regeneration System

Boom and arm regeneration system improves operating smoothness, speed and also eliminates wear caused by cavitation.

Boom and Arm Holding Valves

A new standard boom and arm holding valves prevent drift when lifting or waiting for a truck to load.

Fine and Precise Control

The F-mode setting control engine output while the hydraulics work at maximum lifting power and precise control for applications like laying pipe and fine grading. In the F-mode, system pressure is always at maximum or "Power Boost" pressure.

Self-diagnostic Monitor System

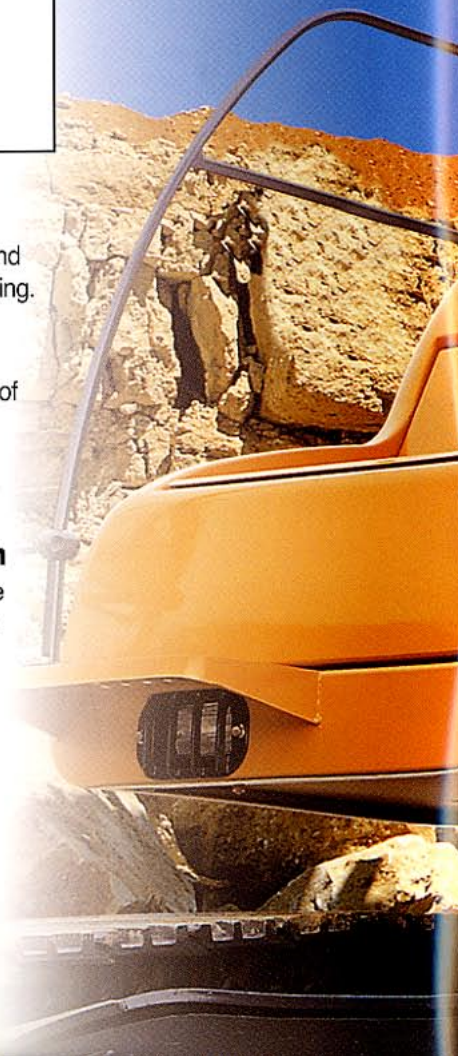
This system monitors 7 vital sub-systems and displays an error code to aid in troubleshooting.

One Touch Power Boost

The power boost switch, located on the top of the right hand joystick, increases system pressure up to 10% for 9 seconds in H, G1-G3 modes.

Integrated Mode Selection Switch

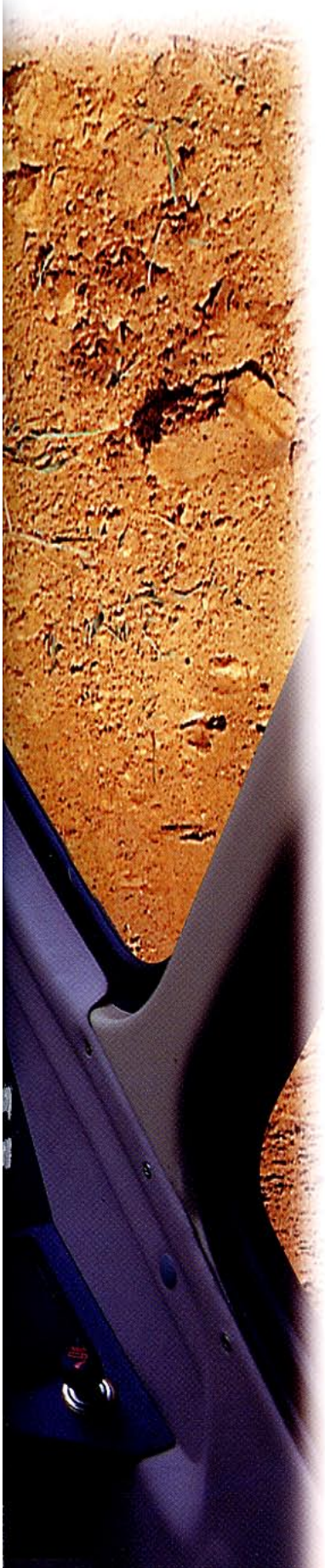
Includes four different work modes with nine different engine settings, to allow maximum efficiency for various job site needs.





Operator Environment





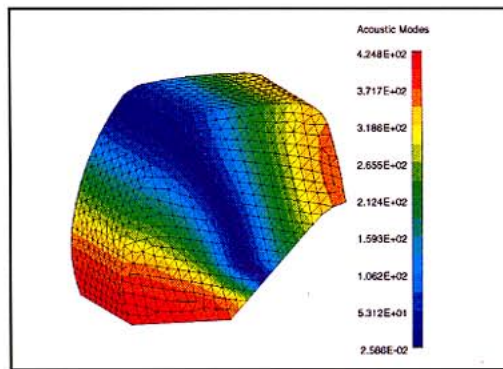
Deluxe KAB Seat



The deluxe KAB Seat (standard equipment) has 8 individual adjustments. The seat and console can be adjusted together or independently to ensure a high degree of operator comfort and to meet job site conditions.

Acoustic Control

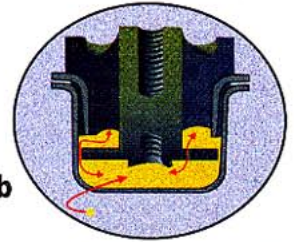
High performance sound absorbing material in the cab and engine/pump compartments have achieved significant reduction in noise level. Cab sound level is 70dB(A) which corresponds to that of passenger car. With an external sound level of 72dB(A), this is an environment friendly machine particularly suited to urban job sites and night work.



Monitor System and Switch



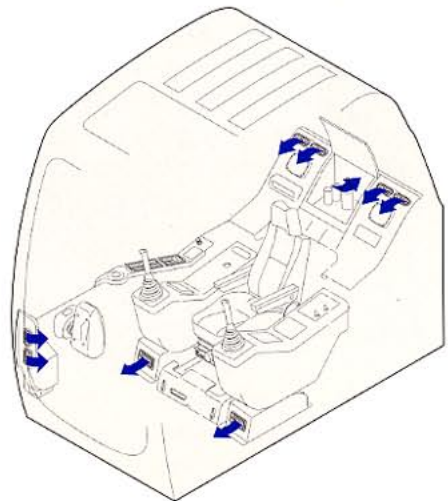
Hydraulic Dampening Cab Mounts



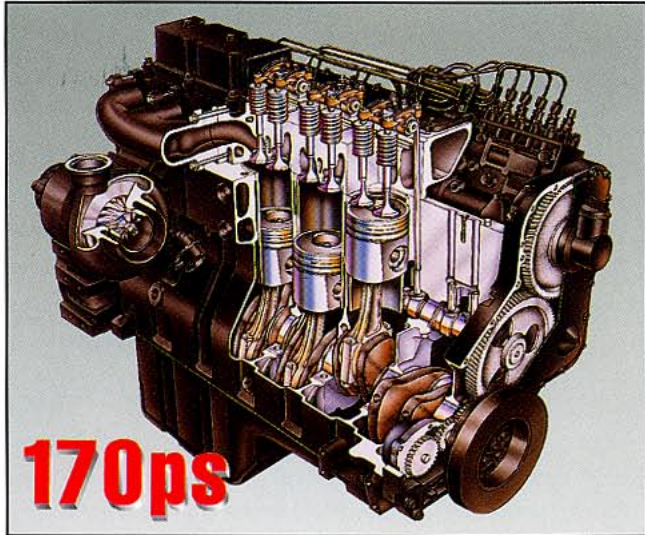
Strategically positioned 5 silicon oil and rubber viscous dampening mounts significantly reduce shock, vibration and noise transmitted to the cab. Dampening the noise and vibration levels lowers operator stress and fatigue.

Integrated Air Conditioning / Heating System (Option)

The deluxe cab features an integrated air conditioning/heating system and is pressurized to provide a dust free, climate controlled operator environment. The multi vent dust system delivers balanced airflow for cooling, heating and ventilating to maintain comfort and visibility, regardless of weather conditions.



Performance



Cummins Engine

Cummins engines have been acknowledged throughout the world for reliability and serviceability. The SE240LC-3/NLC-3 is powered by the Cummins C8.3-C diesel engine. The engine is rated at 170 net horsepower. A redesigned fuel delivery system creates greater combustion efficiency producing more power, torque and improved fuel economy while meeting the toughest emission standards. The global distribution network provides unequalled parts availability and service support.

Automatic Travel Speed Selection

Travel performance is significantly enhanced by the automatic speed selection function which changes the travel speed according to the load acting on the travel motor.

The operator can switch to the 1st speed position to fix the system in the lower speed. This is advantageous in hard soil condition or for safety when smooth low speed travel is required.

Powerful Tractive Effort

A powerful tractive effort of 21.3tons enables the machine to move up to 35 degrees.

Summation System

The hydraulic circuit adopts a summation system. This system provides two pump flows, one to boom and the other to arm. The flows are also tied together. If one is not being used, the other has full use of the flow available.

Boom and Arm Priority

Boom and arm priority valves are designed within the hydraulic circuit to allow oil to flow to the function where it is needed the most. When the joysticks are neutral position, both priority valves are open.

Boom priority valve allows fast boom up for applications such as loading trucks and coming out of a deep excavation.

Arm priority valve allows fast arm in and out for applications such as digging and leveling. The boom and arm priority valves are working automatically. As the operator strokes the joysticks, the hydraulic system directs oil flow that will most efficiently get the job done.

Swing Control

Improved swing hydraulics incorporate an anti-rebound valve for greater accuracy, minimal drift and smoother stops with virtually no rebound motion.

Cold Weather Start-up Aids

Optional start up aids include :
A block heater, electric air intake heater, fuel warmer, and an oil pan heater, to ensure trouble free start-up under extreme cold weather conditions.





Durability

Increased Lower Frame Durability

For the toughest job site conditions, the lower frame durability has been improved by utilizing high tensile strength steel in critical stress locations.

Improved Hydraulic Cylinders

Adopting anti-contamination piston seals, both internally and externally provides improved sealing characteristics minimizing internal leakage and enhancing reliability.

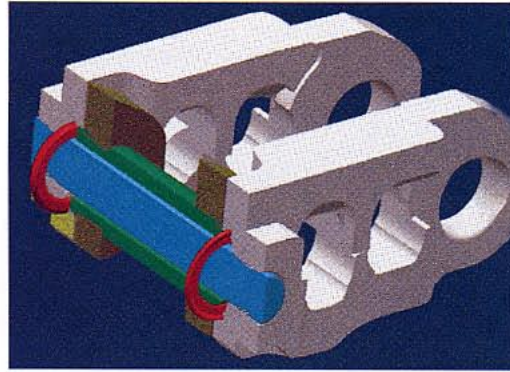


Reinforced Attachments

Computer aided design and stress analysis of the boom and arm have resulted in larger reinforced structures with the best combination of strength, weight and performance.

Extended Undercarriage Durability

Sealed and greased lubricated tracks, combined with the use of alloy steel idlers and rollers and a fabricated center mount track guard, provide greater undercarriage durability.



Maintenance



Fuel Tank Filling

To reduce the risk of contamination, the tank filler neck has been enlarged to accept a standard fueling nozzle and the optional filler pump is pumped directly to the tank.

Radiator & Oil Cooler Maintenance

The hydraulic oil cooler can be tilted away from the radiator for easy cleaning.

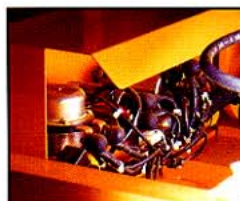
Electrical Harness

Double lock harness plugs are waterproof to ensure secure connections and prevent corrosion.



Relay & Solenoid Cover

The relays and solenoid valves are shielded to prevent accidental damage or terminal contact.



Swing Motor Access

Redesigned swivel joint mounting provides easier access to the swing motor, swivel joint and main control valve.



Battery Protection

A composite material cover protects the battery and prevents accidental contact with the cable terminal.

Easy Access

Compartment doors open wide to provide easy access for maintenance and daily maintenance checks.

Hydraulic Tank Sight Gauge

A conveniently located sight gauge permits a quick check of the hydraulic oil level.

Improved O-ring Sealed Joints

The use of superior quality O-ring seals throughout the hydraulic system eliminates leaking joints, reduces machine maintenance, and protects the environment.



Battery Master Switch

A keyed master switch disconnects battery power to protect the electrical system during down periods and to deter machine theft.

Storage Compartment

Storage space has been increased for operator tools, etc.



Excaliever

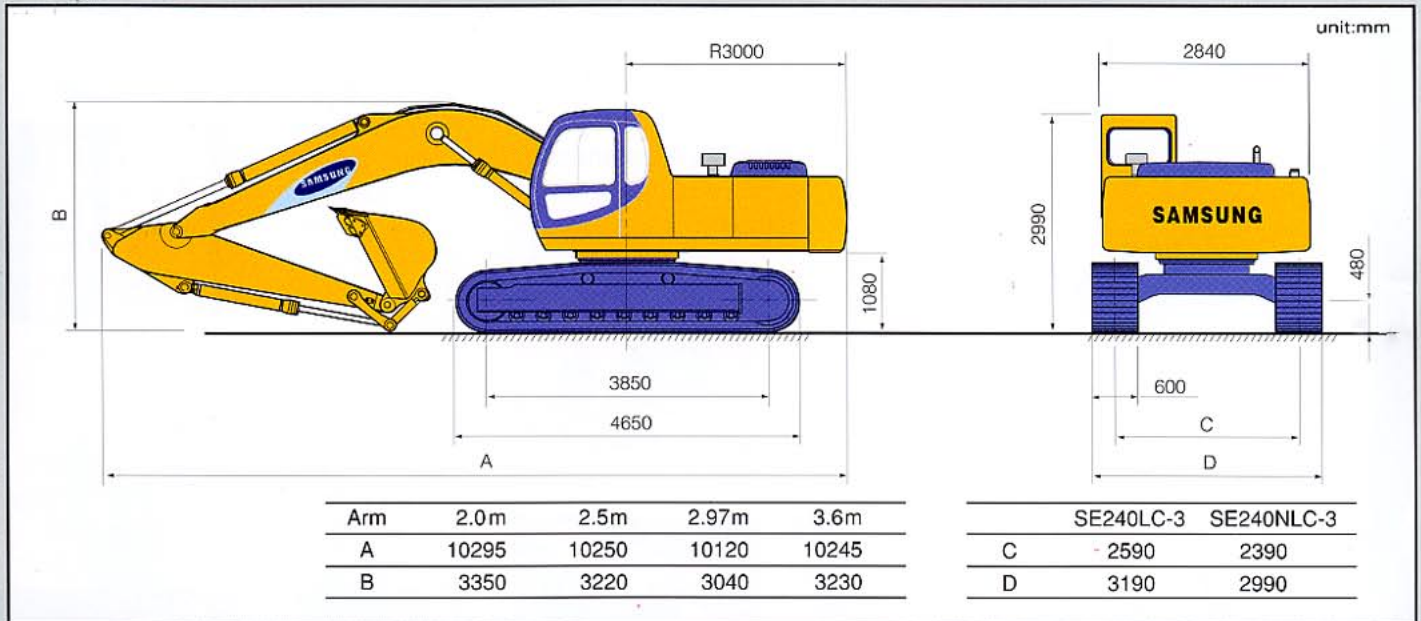
The Excaliever providing a quick-check of the machine status and troubles always keeps the machine with its most optimum conditions.

The Excaliever connected to the diagnosis-purposed port shows the machine conditions such as controllers and electronic, hydraulic system with graphics or letters on the screen, resulting in a quick and relevant troubleshooting.



SE240LC-3/NLC-3

Shipping Dimensions

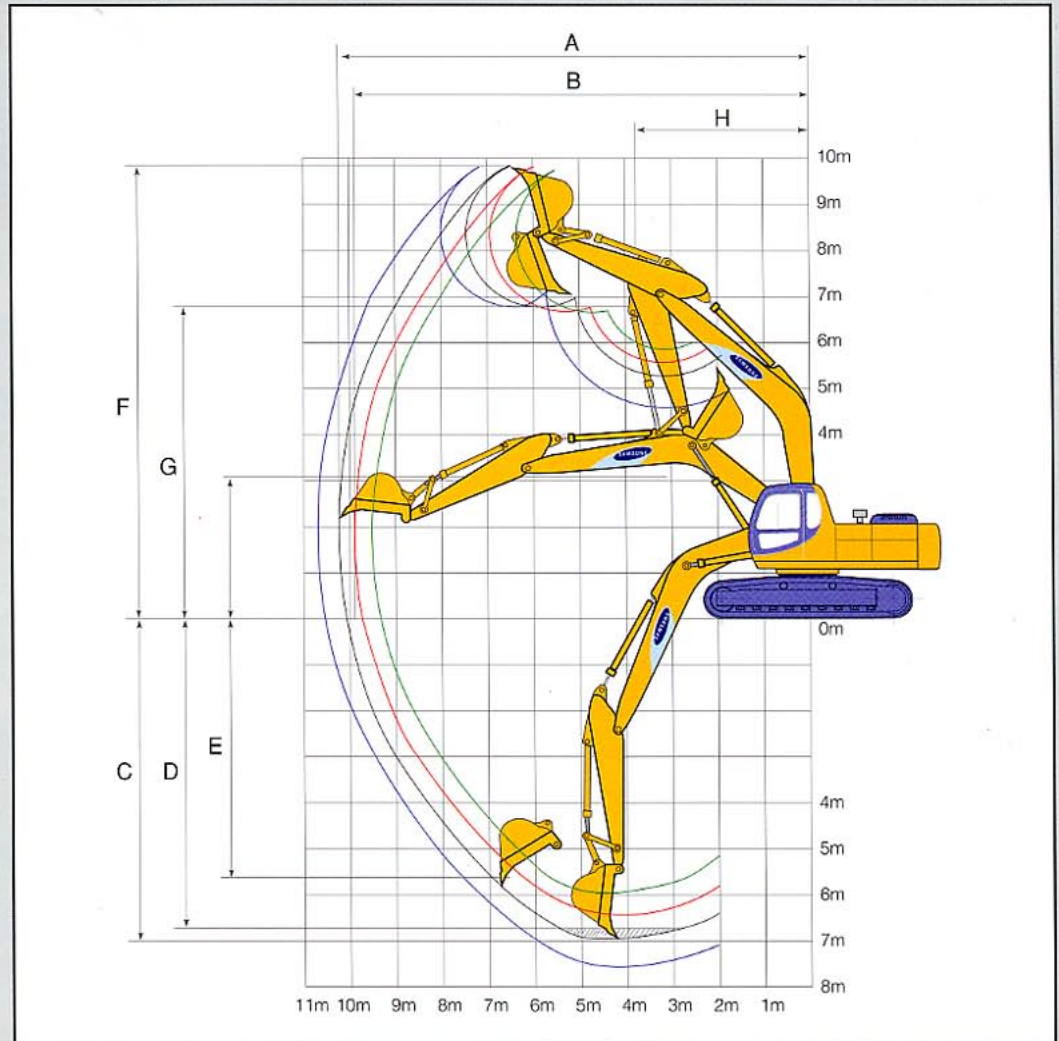


Specifications

Operating Weight (LC/NLC)	kg	23500 / 24200
Bucket Capacity (SAE / CECE)	m ³	1.08 / 0.95
Engine		
Model		Cummins C8.3-C
Type		Water Cooled 6 Cylinders
Flywheel Horsepower	ps(kW) / rpm	170 (125) / 2000
Max. Torque	kg · m / rpm	76.5 / 1500
Fuel Tank Capacity	l	350
Hydraulic System		
Type		Variable Displacement Axial Piston Pump × 2, Gear Pump × 1
System Pressure	kg/cm ²	320 / 350
Max. Flow rate	l / min	2 × 230
Performance		
Swing Speed	rpm	11.9
Travel Speed	km/h	3.2 / 5.5
Gradeability	deg	35
Max. Tractive Effort	kg	21282
Max. Bucket Digging Force (Normal / Power up)	kg	14100 / 15420
Max. Arm Digging Force (Normal / Power up)	kg	11200 / 12250
Ground Pressure(LC/NLC)	kg/cm ²	0.47 / 0.48

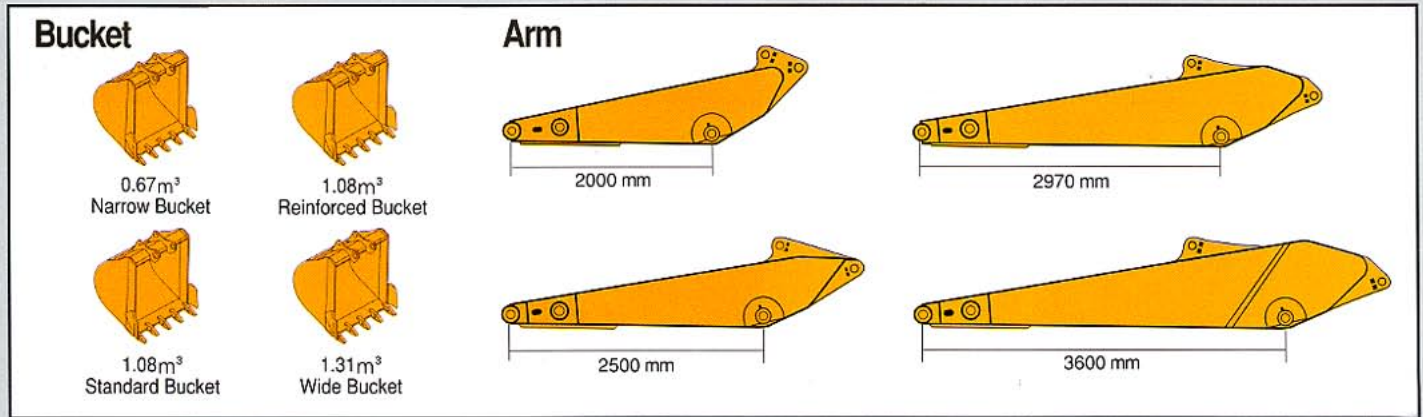


Working Ranges



Digging Applications	Unit	Extra Short Arm(2.0m)	Short Arm (2.5m)	Standard / HD Arm(2.97m)	Long Arm (3.6m)
A. Max. Digging Reach	mm	9550	9880	10260	10730
B. Max. Digging Reach on Ground	mm	9360	9690	10080	10560
C. Max. Digging Depth	mm	6060	6560	6980	7660
D. Max. Digging Depth (8' Level)	mm	5780	6280	6775	7380
E. Max. Vertical Wall Digging Depth	mm	4680	5730	6100	6270
F. Max. Digging Height	mm	9660	9630	9730	9700
G. Max. Dumping Height	mm	6720	6670	6800	6815
H. Min. Front Swing Radius	mm	4030	3860	3820	3850
Max. Bucket Digging Force (Normal / Power up)	kg	15140/16560	14100/15420	14100/15420	14100/15420
Max. Arm Digging Force (Normal / Power up)	kg	15160/16580	12770/13970	11200/12250	9870/10795

SE240LC-3/NLC-3



Bucket & Arm Combination

		Narrow Bucket	Standard Bucket	Reinforced Bucket	Wide Bucket
Bucket Capacity (SAE / CECE)	m ³	0.67 / 0.60	1.08 / 0.95	1.08 / 0.95	1.31 / 1.15
Bucket Width (with/ without Side Cutter)	mm	940 / 830	1340 / 1230	1340 / 1230	1560 / 1450
No. of Teeth		4(★)	5(★)	5(★)	6(★)
Application		Trenching	General Purpose	Extreme Service	Loading Service
Arm Options	Extra Short Arm	2.0m	○	○	○
	Short Arm	2.5m	○	○	○
	Standard Arm	2.97m	○	○	□
	Long Arm	3.6m	○	□	X
Remark			Standard		

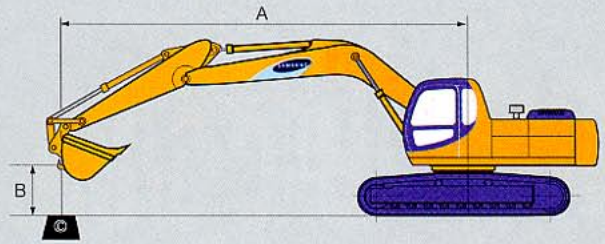
★ : Horizontal and vertical pin type are available.
 ○ : Applicable for general purpose up to 2000kg/m²
 □ : Applicable for light duty up to 1600kg/m²
 X : Not usable.

SE240LC-3 Undercarriage (Standard Counterweight : 4350kg / Optional Counterweight : 5050kg)

		600	700	800	900	
Tripple Grouser Shoe	Shoe Width	mm	600	700	800	900
	Overall Width	mm	3190	3290	3390	3490
	Operating Weight	kg	23500/24200	23800/24500	24080/24780	24380/25080
	Ground Pressure	kg/cm ²	0.47 / 0.48	0.41 / 0.42	0.36 / 0.37	0.33 / 0.34
Swamp Shoe	Shoe Width	mm	910			
	Overall Width	mm	3500			
	Operating Weight	kg	24460/25160			
	Ground Pressure	kg/cm ²	0.32 / 0.33			
Rubber Pad	Shoe Width	mm	600(Rubber Pad)			
	Overall Width	mm	3190			
	Operating Weight	kg	24210/24910			
	Ground Pressure	kg/cm ²	0.48 / 0.49			

SE240NLC-3 Undercarriage (Standard Counterweight : 5050kg)

		600	700	800	900	
Tripple Grouser Shoe	Shoe Width	mm	600	700	800	900
	Overall Width	mm	2990	3090	3190	3290
	Operating Weight	kg	24200	24500	24780	25080
	Ground Pressure	kg/cm ²	0.48	0.42	0.37	0.34
Swamp Shoe	Shoe Width	mm	910			
	Overall Width	mm	3300			
	Operating Weight	kg	25160			
	Ground Pressure	kg/cm ²	0.33			
Rubber Pad	Shoe Width	mm	600(Rubber Pad)			
	Overall Width	mm	2990			
	Operating Weight	kg	24910			
	Ground Pressure	kg/cm ²	0.49			



Lifting Capacities

SE240LC-3 (Shoe 600mm+Bucket 1.08m³, Counterweight 4350kg)

unit : kg

	A		0m	1.5m	3m	4.5m	6m	7.5m	9m	Max.Reach	
	B										
Boom 6.0m + Arm 3.6m	7.5 m	Front Side								* 3460 * 3460	7356 mm
	6 m	Front Side						* 3780 * 3780		* 3410 * 3410	8305 mm
	4.5 m	Front Side						* 4170 4050		* 3510 2910	8900 mm
	3 m	Front Side			* 6960 * 6960	* 6610 * 6610	* 5370 * 5370	* 4740 3870	* 4360 2750	* 3760 2620	9212 mm
	1.5 m	Front Side			* 5710 * 5710	* 8980 8520	* 6550 5380	* 5390 3700	4260 2640	4040 2490	9270 mm
	0 m	Front Side			* 4630 * 4630	* 10810 7920	* 7610 5070	5670 3530	4170 2550	4100 2510	9079 mm
	1.5 m	Front Side		* 6460 * 6460	* 7390 * 7390	* 11710 7620	7970 4870	5540 3140		4420 2700	8621 mm
	3 m	Front Side		* 7540 * 7540	* 11410 * 11410	* 11800 7560	7890 4790	5500 3370		5110 3140	7850 mm
	4.5 m	Front Side		* 11730 * 11730	* 16340 15870	* 11090 7660	7940 4840			6720 4120	6654 mm
	6 m	Front Side			* 13300 * 13300	* 9190 7940				* 8750 7370	4710 mm
Boom 6.0m + Arm 2.97m	7.5 m	Front Side								* 4100 * 4100	6766 mm
	6 m	Front Side						* 4340 4080		* 4010 3780	7789 mm
	4.5 m	Front Side					* 5000 * 5000	* 4650 3960		* 4130 3170	8422 mm
	3 m	Front Side			* 5960 * 5960	* 7690 * 7690	* 5980 * 5980	* 5190 3790		* 4420 2850	8751 mm
	1.5 m	Front Side			* 4500 * 4500	* 9950 8290	* 7100 5280	* 5770 3640		4390 2720	8812 mm
	0 m	Front Side			* 6420 * 6420	* 11430 7820	* 8020 5020	5640 3510		4470 2760	8610 mm
	1.5 m	Front Side		* 6900 * 6900	* 6550 * 6550	* 11930 7640	* 7980 4880	5550 3430		4880 3000	8126 mm
	3 m	Front Side		* 8150 * 8150	* 12120 * 12120	* 11660 7660	* 7950 4850			5790 3570	7301 mm
	4.5 m	Front Side			* 15050 * 15050	* 10530 7820				* 7650 4960	5994 mm

- Notes : 1. The above loads are in compliance with SAE and ISO Hydraulic Excavator Lift Capacity Standards.
 2. Rated loads do not exceed 87% of hydraulic lifting capacity or 75% of tipping load.
 3. Rated loads marked with an asterisk (*) are limited by hydraulic capacity rather than tipping load.

SE240LC-3/NLC-3

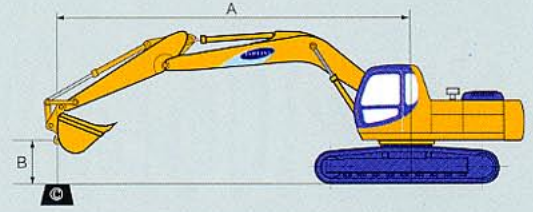
Lifting Capacities

SE240LC-3 (Shoe 600mm+Bucket 1.08m³, Counterweight 4350kg)

unit : kg

	A		0m	1.5m	3m	4.5m	6m	7.5m	9m	Max.Reach	
	B										
Boom 6.0m + Arm 2.5m	7.5 m	Front Side					* 4650 * 4650			* 4720 * 4720	6264 mm
	6 m	Front Side					* 4810 * 4810			* 4820 4190	7359 mm
	4.5 m	Front Side				* 6600 * 6600	* 5530 * 5530	* 5070 3950		* 5010 3480	8026 mm
	3 m	Front Side				* 8510 * 8510	* 6470 5560	* 5560 3790		* 4930 3120	8372 mm
	1.5 m	Front Side				*10640 8150	* 7510 5260	* 5800 3660		4760 2980	8435 mm
	0 m	Front Side				*11780 7770	8150 5030	5670 3540		4870 3030	8224 mm
	1.5 m	Front Side			* 6290 * 6290	*11970 7680	8020 4920	5610 3490		5370 3330	7715 mm
	3 m	Front Side		* 6960 * 6960	*13190 *13190	*11440 7750	8040 4940			6520 4050	6840 mm
	4.5 m	Front Side			*13840 *13840	* 9970 7980				* 8170 5950	5419 mm
	6 m	Front Side									
Boom 6.0m + Arm 2.0m	7.5 m	Front Side								* 5290 * 5290	5969 mm
	6 m	Front Side					* 5310 * 5310			* 5290 4410	7110 mm
	4.5 m	Front Side				* 7170 * 7170	* 6010 5750	* 5450 3920		* 5430 3640	7799 mm
	3 m	Front Side				* 9050 8410	* 6920 5490	* 5880 3780		5140 3270	8155 mm
	1.5 m	Front Side				* 7450 * 7450	* 7880 5230	5780 3640		4980 3130	8220 mm
	0 m	Front Side				* 7300 * 7300	8140 5040	5680 3560		5130 3210	8003 mm
	1.5 m	Front Side			* 8300 * 8300	*11880 7750	8070 4970			5690 3550	7478 mm
	3 m	Front Side			*12510 *12510	*11080 7880	* 8130 5020			* 7040 4390	6571 mm
	4.5 m	Front Side			*12350 *12350	* 9170 8160				* 8030 6750	5073 mm

- Notes : 1. The above loads are in compliance with SAE and ISO Hydraulic Excavator Lift Capacity Standards.
 2. Rated loads do not exceed 87% of hydraulic lifting capacity or 75% of tipping load.
 3. Rated loads marked with an asterisk (*) are limited by hydraulic capacity rather than tipping load.



Lifting Capacities

SE240LC-3 (Shoe 600mm+Bucket 1.08m³, Counterweight 5050kg)

unit : kg

	A		0m	1.5m	3m	4.5m	6m	7.5m	9m	Max.Reach	
	B										
Boom 6.0m + Arm 3.6m	7.5 m	Front Side								* 3460 * 3460	7356 mm
	6 m	Front Side						* 3780 * 3780		* 3410 * 3410	8305 mm
	4.5 m	Front Side						* 4170 * 4170		* 3510 3190	8900 mm
	3 m	Front Side			* 6960 * 6960	* 6610 * 6610	* 5370 * 5370	* 4740 4210	* 4360 3020	* 3760 2890	9212 mm
	1.5 m	Front Side			* 5710 * 5710	* 8980 * 8980	* 6550 5830	* 5390 4040	4590 2910	* 4180 2760	9270 mm
	0 m	Front Side			* 4630 * 4630	*10810 8590	* 7610 5520	* 6000 3870	4500 2830	4430 2780	9079 mm
	1.5 m	Front Side		* 6460 * 6460	* 7390 * 7390	*11710 8290	* 8310 5320	5970 3750		4770 2990	8621 mm
	3 m	Front Side		* 7540 * 7540	*11410 *11410	*11800 8230	8470 5240	5920 3710		5520 3460	7850 mm
	4.5 m	Front Side		*11730 *11730	*16340 *16340	*11090 8330	* 8080 5290			* 7090 4520	6654 mm
	6 m	Front Side			*13300 *13300	* 9190 8610				* 8750 8000	4710 mm
Boom 6.0m + Arm 2.97m	7.5 m	Front Side								* 4100 * 4100	6766 mm
	6 m	Front Side						* 4340 * 4340		* 4010 * 4010	7789 mm
	4.5 m	Front Side					* 5000 * 5000	* 4650 4300		* 4130 3470	8422 mm
	3 m	Front Side			* 5960 * 5960	* 7690 * 7690	* 5980 * 5980	* 5190 4130		* 4420 3140	8751 mm
	1.5 m	Front Side			* 4500 * 4500	* 9950 8960	* 7100 5730	* 5770 3980		4730 3000	8812 mm
	0 m	Front Side			* 6420 * 6420	*11430 8490	* 8020 5470	* 6070 3850		4830 3040	8610 mm
	1.5 m	Front Side		* 6900 * 6900	* 6550 * 6550	*11930 8310	* 8520 5330	* 5980 3770		5260 3310	8126 mm
	3 m	Front Side		* 8150 * 8150	*12120 *12120	*11660 8330	* 8490 5300			6230 3930	7301 mm
	4.5 m	Front Side			*15050 *15050	*10530 8490				* 7650 5420	5994 mm

- Notes : 1. The above loads are in compliance with SAE and ISO Hydraulic Excavator Lift Capacity Standards.
 2. Rated loads do not exceed 87% of hydraulic lifting capacity or 75% of tipping load.
 3. Rated loads marked with an asterisk (*) are limited by hydraulic capacity rather than tipping load.

SE240LC-3/NLC-3

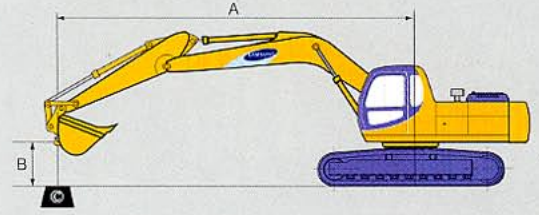
Lifting Capacities

SE240LC-3 (Shoe 600mm+Bucket 1.08m³, Counterweight 5050kg)

unit : kg

	A		0m	1.5m	3m	4.5m	6m	7.5m	9m	Max.Reach	
	B										
Boom 6.0m + Arm 2.5m	7.5 m	Front Side					* 4650 * 4650			* 4720 * 4720	6264 mm
	6 m	Front Side					* 4810 * 4810			* 4820 4540	7359 mm
	4.5 m	Front Side				* 6600 * 6600	* 5530 * 5530	* 5070 4290		* 5010 3800	8026 mm
	3 m	Front Side				* 8510 * 8510	* 6470 6010	* 5560 4130		* 5250 3420	8372 mm
	1.5 m	Front Side				*10640 8820	* 7510 5710	* 6080 4000		5120 3270	8435 mm
	0 m	Front Side				*11780 8440	* 8310 5480	6100 3880		5250 3340	8224 mm
	1.5 m	Front Side			* 6290 * 6290	*11970 8350	* 8600 5370	6040 3830		5780 3670	7715 mm
	3 m	Front Side		* 6960 * 6960	*13190 *13190	*11440 8420	* 8420 5390			7000 4430	6840 mm
	4.5 m	Front Side			*13840 *13840	* 9970 8650				* 8170 6460	5419 mm
	6 m	Front Side									
Boom 6.0m + Arm 2.0m	7.5 m	Front Side								* 5290 * 5290	5969 mm
	6 m	Front Side					* 5310 * 5310			* 5290 4770	7110 mm
	4.5 m	Front Side				* 7170 * 7170	* 6010 * 6010	* 5450 4260		* 5430 3970	7799 mm
	3 m	Front Side				* 9050 * 9050	* 6920 5950	* 5880 4120		5530 3580	8155 mm
	1.5 m	Front Side				* 7450 * 7450	* 7880 5680	6200 3980		5360 3440	8220 mm
	0 m	Front Side				* 7300 * 7300	* 8550 5490	6110 3900		5520 3520	8003 mm
	1.5 m	Front Side			* 8300 * 8300	*11880 8420	8650 5420			6110 3890	7478 mm
	3 m	Front Side			*12510 *12510	*11080 8550	* 8210 5480			* 7260 4790	6571 mm
	4.5 m	Front Side			*12350 *12350	* 9170 8830				* 8030 7320	5073 mm

- Notes : 1. The above loads are in compliance with SAE and ISO Hydraulic Excavator Lift Capacity Standards.
 2. Rated loads do not exceed 87% of hydraulic lifting capacity or 75% of tipping load.
 3. Rated loads marked with an asterisk (*) are limited by hydraulic capacity rather than tipping load.



Lifting Capacities

SE240NLC-3 (Shoe 600mm+Bucket 1.08m³, Counterweight 5050kg)

unit : kg

	A		0m	1.5m	3m	4.5m	6m	7.5m	9m	Max.Reach	
	B										
Boom 6.0m + Arm 3.6m	7.5 m	Front Side								* 3460 * 3460	7356 mm
	6 m	Front Side						* 3780 * 3780		* 3410 3400	8305 mm
	4.5 m	Front Side						* 4170 4010		* 3510 2890	8900 mm
	3 m	Front Side			* 6960 * 6960	* 6610 * 6610	* 5370 * 5370	* 4740 3840	* 4360 2730	* 3760 2610	9212 mm
	1.5 m	Front Side			* 5710 * 5710	* 8980 8310	* 6550 5300	* 5390 3670	4570 2630	* 4180 2490	9270 mm
	0 m	Front Side			* 4630 * 4630	* 10810 7730	* 7610 5000	* 6000 3500	4480 2540	4420 2500	9079 mm
	1.5 m	Front Side		* 6460 * 6460	* 7390 * 7390	* 11710 7440	* 8310 4800	5950 3390		4750 2690	8621 mm
	3 m	Front Side		* 7540 * 7540	* 11410 * 11410	* 11800 7380	8440 4730	5900 3350		5490 3110	7850 mm
	4.5 m	Front Side		* 11730 * 11730	* 16340 15040	* 11090 7470	* 8080 4770			* 7090 4080	6654 mm
	6 m	Front Side			* 13300 * 13300	* 9190 7750				* 8750 7210	4710 mm
Boom 6.0m + Arm 2.97m	7.5 m	Front Side								* 4100 * 4100	6766 mm
	6 m	Front Side						* 4340 4040		* 4010 3750	7789 mm
	4.5 m	Front Side					* 5000 * 5000	* 4650 3920		* 4130 3160	8422 mm
	3 m	Front Side			* 5960 * 5960	* 7690 * 7690	* 5980 5520	* 5190 3760		* 4420 2840	8751 mm
	1.5 m	Front Side			* 4500 * 4500	* 9950 8090	* 7100 5210	* 5770 3610		4710 2710	8812 mm
	0 m	Front Side			* 6420 * 6420	* 11430 7630	* 8020 4950	6040 3480		4810 2740	8610 mm
	1.5 m	Front Side		* 6900 * 6900	* 6550 * 6550	* 11930 7460	* 8520 4810	5950 3400		5240 2990	8126 mm
	3 m	Front Side		* 8150 * 8150	* 12120 * 12120	* 11660 7480	* 8490 4780			6210 3540	7301 mm
	4.5 m	Front Side			* 15050 * 15050	* 10530 7640				* 7650 4900	5994 mm

- Notes : 1. The above loads are in compliance with SAE and ISO Hydraulic Excavator Lift Capacity Standards.
 2. Rated loads do not exceed 87% of hydraulic lifting capacity or 75% of tipping load.
 3. Rated loads marked with an asterisk (*) are limited by hydraulic capacity rather than tipping load.

SE240LC-3/NLC-3

Lifting Capacities

SE240NLC-3 (Shoe 600mm+Bucket 1.08m³, Counterweight 5050kg)

unit : kg

	A		0m	1.5m	3m	4.5m	6m	7.5m	9m	Max.Reach	
	B										
Boom 6.0m + Arm 2.5m	7.5 m	Front Side					* 4650 * 4650			* 4720 * 4720	6264 mm
	6 m	Front Side					* 4810 * 4810			* 4820 4150	7359 mm
	4.5 m	Front Side				* 6600 * 6600	* 5530 * 5530	* 5070 3920		* 5010 3460	8026 mm
	3 m	Front Side				* 8510 * 8510	* 6470 5480	* 5560 3760		* 5250 3100	8372 mm
	1.5 m	Front Side				*10640 7950	* 7510 5190	* 6080 3630		5100 2960	8435 mm
	0 m	Front Side				*11780 7580	* 8310 4960	6080 3520		5230 3020	8224 mm
	1.5 m	Front Side			* 6290 * 6290	*11970 7500	8570 4860	6010 3460		5750 3310	7715 mm
	3 m	Front Side		* 6960 * 6960	*13190 *13190	*11440 7570	* 8420 4870			6980 4010	6840 mm
	4.5 m	Front Side			*13840 *13840	* 9970 7790				* 8170 5850	5419 mm
6 m	Front Side										
Boom 6.0m + Arm 2.0m	7.5 m	Front Side								* 5290 * 5290	5969 mm
	6 m	Front Side					* 5310 * 5310			* 5290 4360	7110 mm
	4.5 m	Front Side				* 7170 * 7170	* 6010 5670	* 5450 3890		* 5430 3620	7799 mm
	3 m	Front Side				* 9050 8210	* 6920 5420	* 5880 3750		5500 3250	8155 mm
	1.5 m	Front Side				* 7450 * 7450	* 7880 5160	6180 3610		5330 3110	8220 mm
	0 m	Front Side				* 7300 * 7300	* 8550 4970	6090 3530		5490 3190	8003 mm
	1.5 m	Front Side			* 8300 * 8300	*11880 7570	8620 4900			6090 3530	7478 mm
	3 m	Front Side			*12510 *12510	*11080 7690	* 8210 4960			* 7260 4340	6571 mm
	4.5 m	Front Side			*12350 *12350	* 9170 7960				* 8030 6630	5073 mm

- Notes : 1. The above loads are in compliance with SAE and ISO Hydraulic Excavator Lift Capacity Standards.
 2. Rated loads do not exceed 87% of hydraulic lifting capacity or 75% of tipping load.
 3. Rated loads marked with an asterisk (*) are limited by hydraulic capacity rather than tipping load.



Standard Equipment

- Air Cleaner
- Adjustable Monitor
- Alternator(50A)
- Automatic Travel System
- Automatic Idling System
- Automatic Deaeration System
- Auxiliary Hydraulic Valve
- Batteries
- Battery Sealing Cover
- Boom/Arm Holding Valve
- Bucket Cylinder Cushion
- Counter Weight : 4350kg(LC-3)
5050kg(NLC-3)
- Dampening Cab Mounts
- Engine Restart Prevention Circuit
- Hydraulic Track Adjusters
- Cab, All-weather Sound Suppressed, Includes :
 - Ashtray
 - Cigar Lighter
 - Door Locks
 - Floor Mat
 - Horn
 - Hot & Cool Box
 - Pull-up Type Front Window
 - Removable Lower Windshield
 - Seat
 - Seat Belt
 - Safety Glasses
 - Windshield Wiper with Intermittent Feature
- Integrated Mode Selection System
- Joysticks, Pilot-operated
- Lights :
 - Frame Mounted, Two
 - Boom Mounted, Two
- Low Emission Engine
- Master Switch
- Mirrors
- One Touch Power Boost
- Safe Engine Start/Stop Function
- Self-diagnostic System
- Sealed & Greased Track
- Starting Motor(24 volt, 7.46kW)
- Straight Travel Circuit
- Tiltable Oil Cooler
- Tool Box, Locking
- Track Guards
- Water Separator, Fuel line

Optional Equipment

- Anti-drop Valve : Boom, Arm
- Air Conditioner
- Air Heater
- Automatic Greasing System
- Block Heater : 120V, 240V
- Cab Guard
- Counter Weight : 5050kg(LC-3)
- Falling Object Guard (FOG)
- Fuel Filler Pump
- Fuel Warmer
- Heater
- Overload Warning Device
- Precleaner
- Purifier
- Rubber Pads Mounted on Track Shoes
- Spare Parts
- Stereo Cassette Radio (AM/FM)
- Tool Kit
- Travel Alarm
- Vandalism Kit

* Specifications may vary by the region without notice.

* All materials contained within are confidential to Samsung Global Sales Force and may not be copied without the pre-approval of Samsung.

* Materials and specifications are subject to change without notice.

*Under our policy of continuous improvement, we reserve the right to change specifications and design without prior notice.
The illustrations do not necessarily show the standard version of the machine.*

VOLVO

**Volvo Construction
Equipment Group**

Ref. No. 21 1 435 1208
Printed in Korea 98.08-1
Volvo, Seoul

English
KOR