



# SE210LC-3

CRAWLER EXCAVATOR SERIES-3



|                      |                               |                            |
|----------------------|-------------------------------|----------------------------|
| Flywheel Horsepower; | <b>145 ps</b>                 | <b>107 kW</b>              |
| Bucket Capacity; SAE | <b>0.92 m<sup>3</sup></b>     | <b>1.20 yd<sup>3</sup></b> |
|                      | CECE <b>0.8 m<sup>3</sup></b> | <b>1.05 yd<sup>3</sup></b> |
| Operating Weight;    | <b>20500 kg</b>               | <b>45190 lb</b>            |



# SE210LC-3

*Advanced engineering*

*State-of-the-art technology*

*Cutting edge ergonomics*

*World class quality*

*Outstanding productivity*

*Unbeatable performance*

*Advanced Technology*







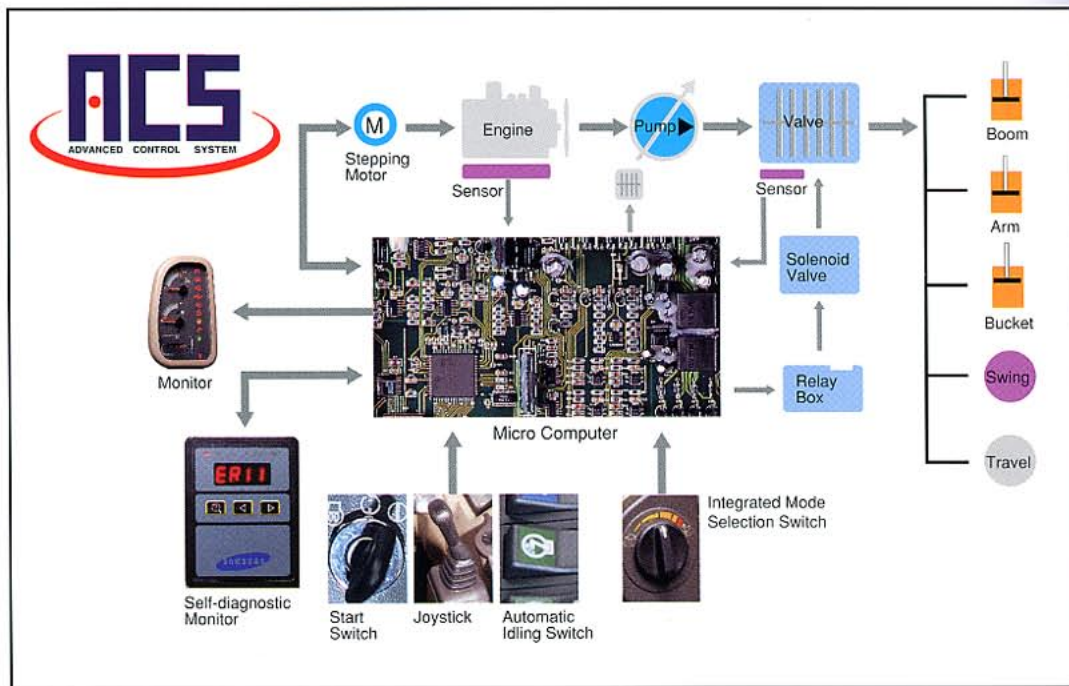
*Technology in Action!*



# Advanced Technology

## ACS (Advanced Control System)

Balances engine power with hydraulic pump output over a wide range of working conditions to provide maximum production with minimal fuel consumption. The integrated mode selection switch automatically sets the engine power and work mode for optimum machine performance. The ACS self-diagnostic mode analyzes information from vital sub-systems and identifies the source of a problem to facilitate troubleshooting.



## Boom and Arm Regeneration System

Boom and arm regeneration system improves operating smoothness, speed and also eliminates wear caused by cavitation.

## Boom and Arm Holding Valves

A new standard boom and arm holding valves prevent drift when lifting or waiting for a truck to load.

## Fine and Precise Control

The F-mode setting control engine output while the hydraulics work at maximum lifting power and precise control for applications like laying pipe and fine grading. In the F-mode, system pressure is always at maximum or "Power Boost" pressure.

## Self-diagnostic Monitor System

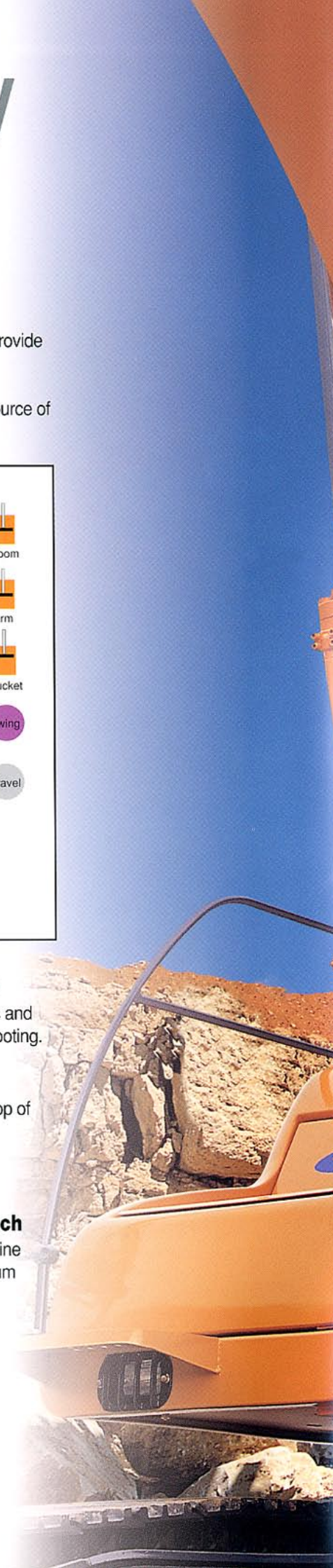
This system monitors 7 vital sub-systems and displays an error code to aid in troubleshooting.

## One Touch Power Boost

The power boost switch, located on the top of the right hand joystick, increases system pressure up to 10% for 9 seconds in H, G1-G3 modes.

## Integrated Mode Selection Switch

Includes four different work modes with nine different engine settings, to allow maximum efficiency for various job site needs.





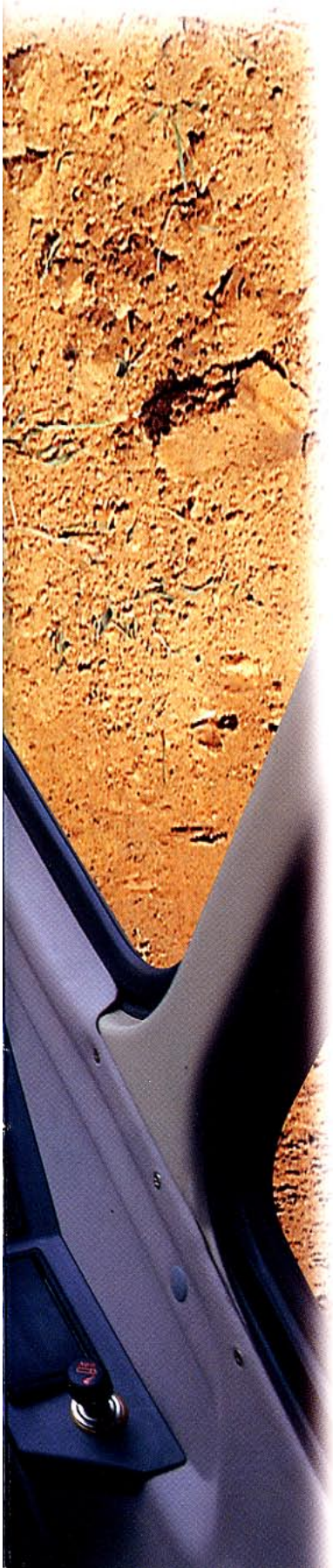




# Operator Environment







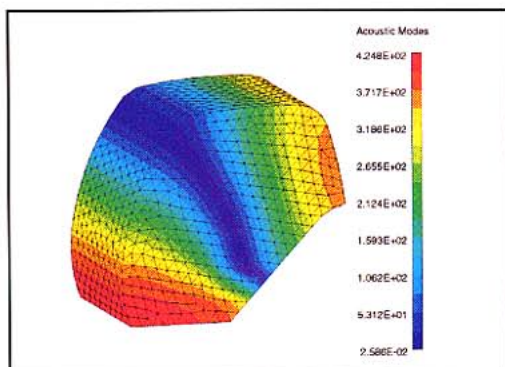
### Deluxe KAB Seat



The deluxe KAB Seat (standard equipment) has 8 individual adjustments. The seat and console can be adjusted together or independently to ensure a high degree of operator comfort and to meet job site conditions.

### Acoustic Control

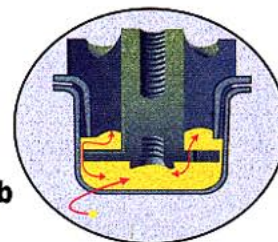
High performance sound absorbing material in the cab and engine/pump compartments have achieved significant reduction in noise level. Cab sound level is 69dB(A) which corresponds to that of passenger car. With an external sound level of 70dB(A), this is an environment friendly machine particularly suited to urban job sites and night work.



### Monitor System and Switch



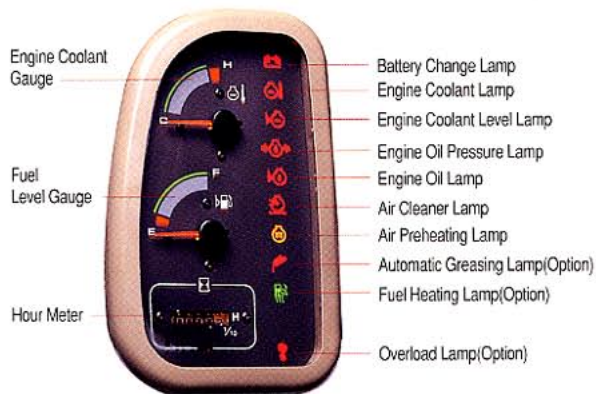
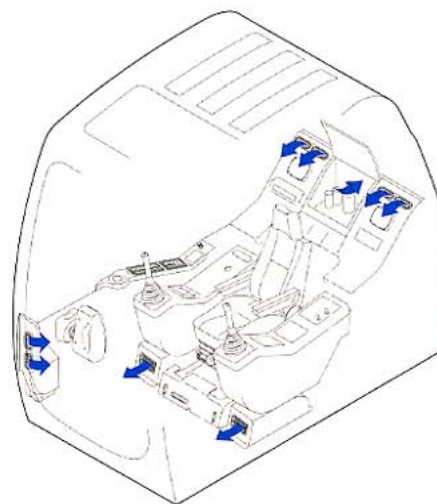
### Hydraulic Dampening Cab Mounts



Strategically positioned 5silicon oil and rubber viscous dampening mounts significantly reduce shock, vibration and noise transmitted to the cab. Dampening the noise and vibration levels lowers operator stress and fatigue.

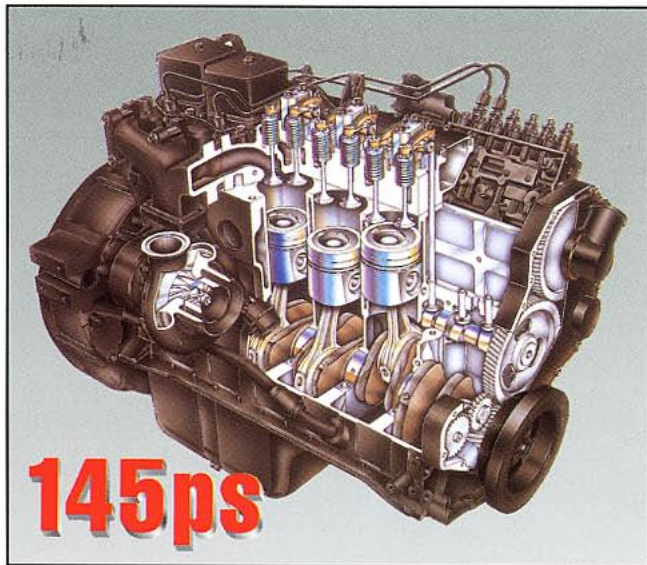
### Integrated Air Conditioning / Heating System (Option)

The deluxe cab features an integrated air conditioning / heating system and is pressurized to provide a dust free, climate controlled operator environment. The multi vent dust system delivers balanced airflow for cooling, heating and ventilating to maintain comfort and visibility, regardless of weather conditions.





# Performance



## Cummins Engine

Cummins engines have been acknowledged throughout the world for reliability and serviceability. The SE210LC-3 is powered by the Cummins B5.9-C diesel engine. The engine is rated at 145 net horsepower. A redesigned fuel delivery system creates greater combustion efficiency producing more power, torque and improved fuel economy while meeting the toughest emission standards. The global distribution network provides unequalled parts availability and service support.

## Swing Control

Improved swing hydraulics incorporate an anti-rebound valve for greater accuracy, minimal drift and smoother stops with virtually no rebound motion.

## Powerful Tractive Effort

A powerful tractive effort of 18.7 tons enables the machine to move up to 35 degrees.

## Automatic Travel Speed Selection

Travel performance is significantly enhanced by the automatic speed selection function which changes the travel speed according to the load acting on the travel motor.

The operator can switch to the 1st speed position to fix the system in the lower speed. This is advantageous in hard soil condition or for safety when smooth low speed travel is required.

## Summation System

The hydraulic circuit adopts a summation system. This system provides two pump flows, one to boom and the other to arm. The flows are also tied together. If one is not being used, the other has full use of the flow available.

## Boom and Arm Priority

Boom and arm priority valves are designed within the hydraulic circuit to allow oil to flow to the function where it is needed the most. When the joysticks are neutral position, both priority valves are open.

Boom priority valve allows fast boom up for applications such as loading trucks and coming out of a deep excavation.

Arm priority valve allows fast arm in and out for applications such as digging and leveling.

The boom and arm priority valves are working automatically.

As the operator strokes the joysticks, the hydraulic system directs oil flow that will most efficiently get the job done.

## Cold Weather Start-up Aids

Optional start-up aids include : A block heater, electric air intake heater, fuel warmer, and an oil pan heater, to ensure trouble free start-up under extreme cold weather conditions.









# Durability

## **Increased Lower Frame Durability**

For the toughest job site conditions, the lower frame durability has been improved by utilizing high tensile strength steel in critical stress locations.

## **Improved Hydraulic Cylinders**

Adopting anti-contamination piston seals, both internally and externally provides improved sealing characteristics minimizing internal leakage and enhancing reliability.



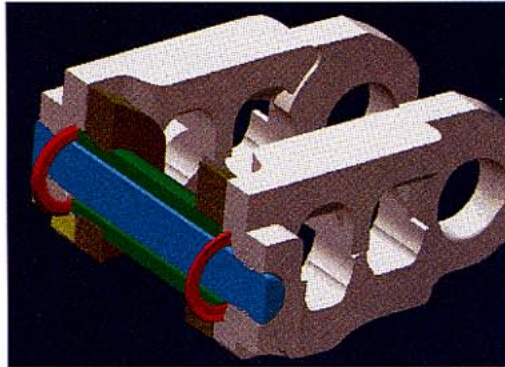


### **Reinforced Attachments**

Computer aided design and stress analysis of the boom and arm have resulted in larger reinforced structures with the best combination of strength, weight and performance.

### **Extended Undercarriage Durability**

Sealed and greased lubricated tracks, combined with the use of alloy steel idlers and rollers and a fabricated center mount track guard, provide greater undercarriage durability.

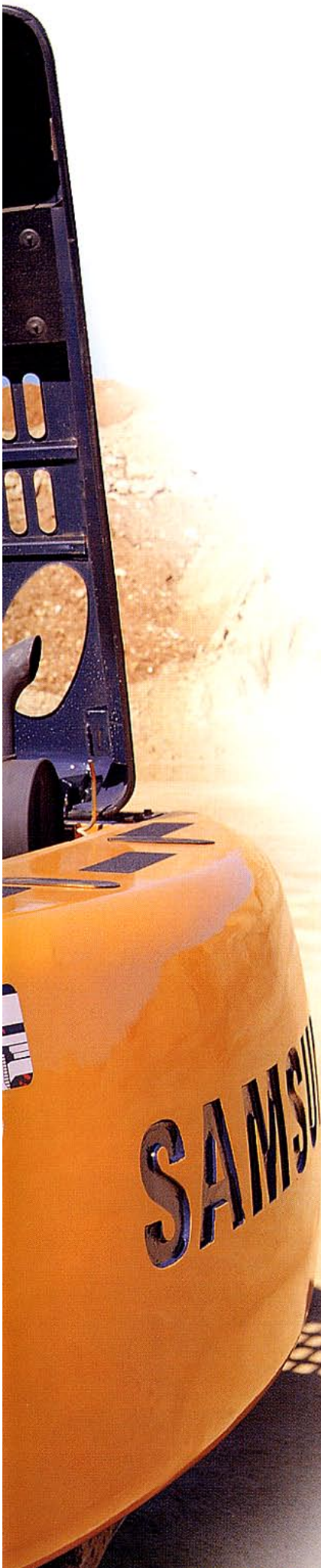




# Maintenance







### **Fuel Tank Filling**

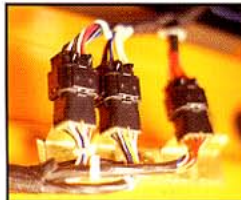
To reduce the risk of contamination, the tank filler neck has been enlarged to accept a standard fueling nozzle and the optional filler pump is pumped directly to the tank.

### **Radiator & Oil Cooler Maintenance**

The hydraulic oil cooler can be tilted away from the radiator for easy cleaning.

### **Electrical Harness**

Double lock harness plugs are waterproof to ensure secure connections and prevent corrosion.



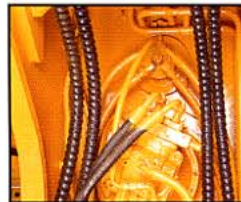
### **Relay & Solenoid Cover**

The relays and solenoid valves are shielded to prevent accidental damage or terminal contact.



### **Swing Motor Access**

Redesigned swivel joint mounting provides easier access to the swing motor, swivel joint and main control valve.



### **Battery Protection**

A composite material cover protects the battery and prevents accidental contact with the cable terminal.

### **Easy Access**

Compartment doors open wide to provide easy access for maintenance and daily maintenance checks.

### **Hydraulic Tank Sight Gauge**

A conveniently located sight gauge permits a quick check of the hydraulic oil level.

### **Improved O-ring Sealed Joints**

The use of superior quality O-ring seals throughout the hydraulic system eliminates leaking joints, reduces machine maintenance, and protects the environment.



### **Battery Master Switch**

A keyed master switch disconnects battery power to protect the electrical system during down periods and to deter machine theft.

### **Storage Compartment**

Storage space has been increased for operator tools, etc.



### **Excaliever**

The Excaliever providing a quick-check of the machine status and troubles always keeps the machine with its most optimum conditions.

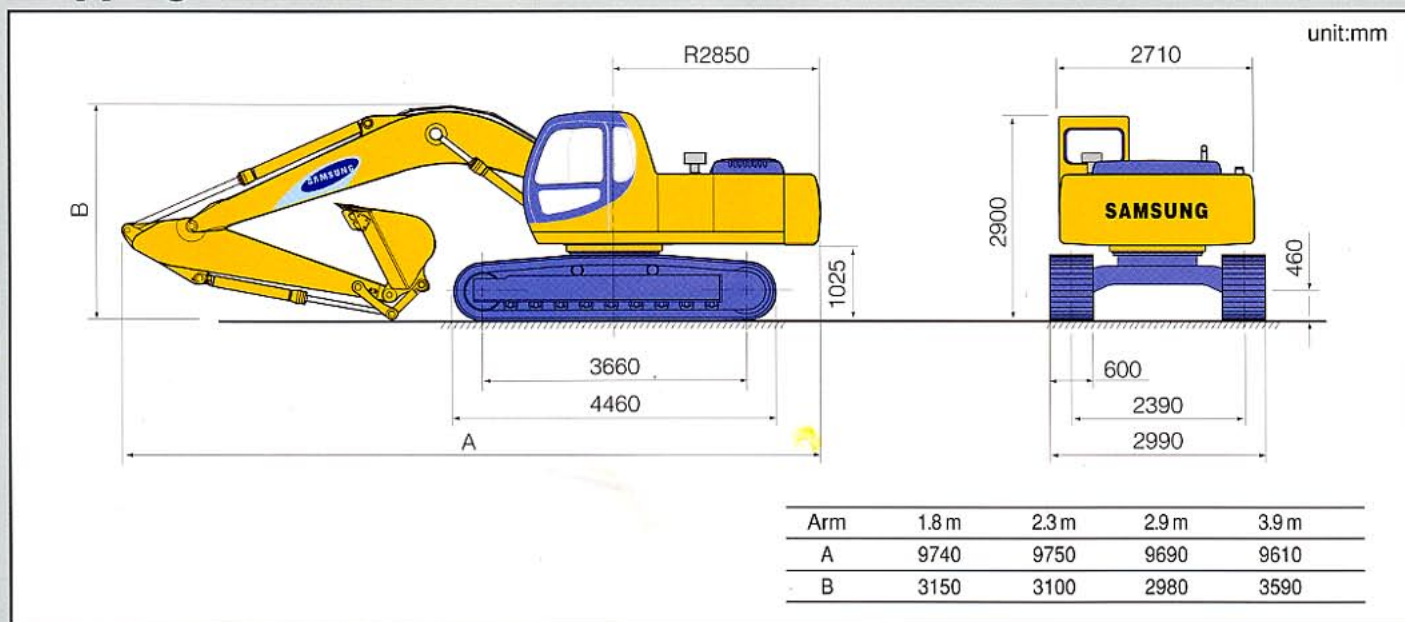
The Excaliever connected to the diagnosis-purposed port shows the machine conditions such as controllers and electronic, hydraulic system with graphics or letters on the screen, resulting in a quick and relevant troubleshooting.





# SE210LC-3

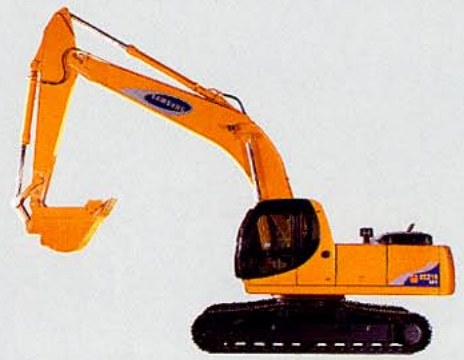
## Shipping Dimensions



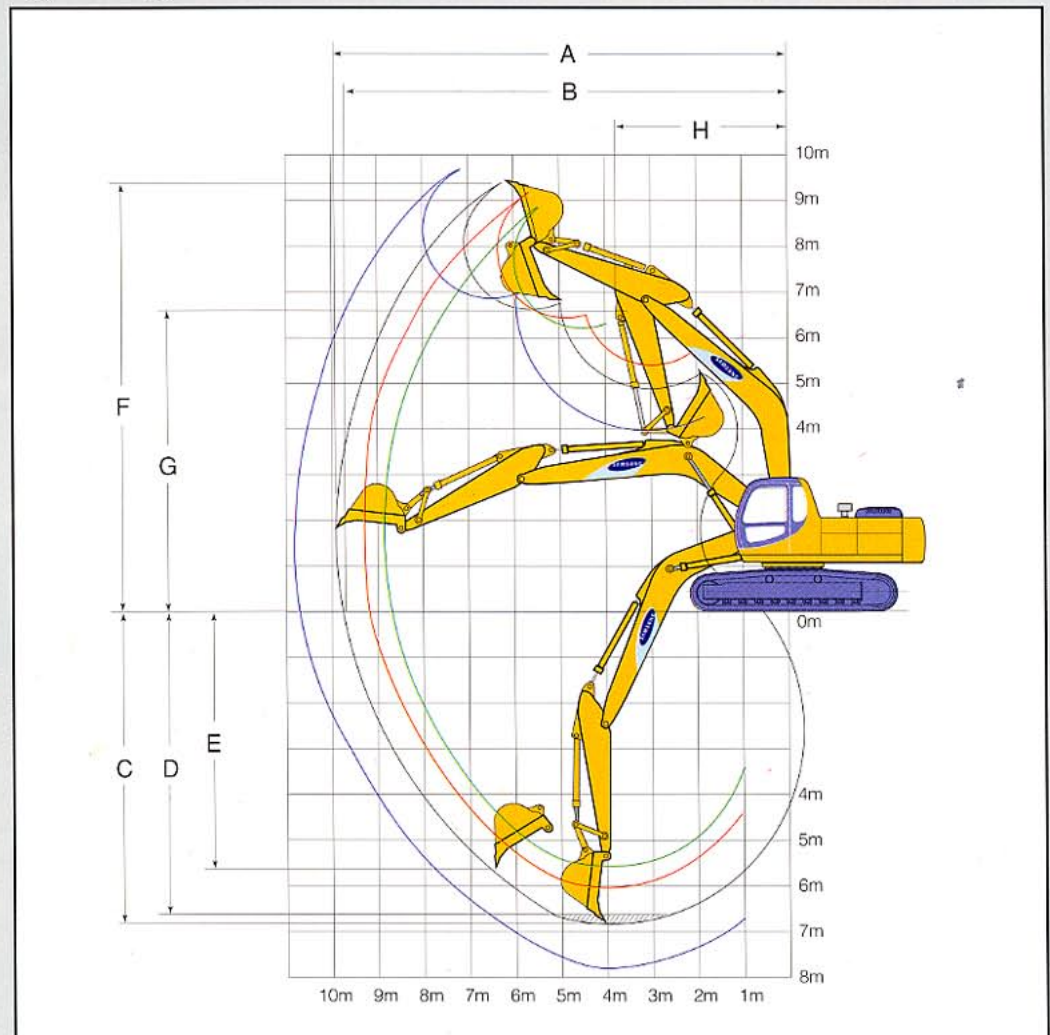
## Specifications

|   |                      |  |
|---|----------------------|--|
| <b>Operating Weight</b>                       | kg                   | 20500  |
| <b>Bucket Capacity</b> (SAE / CECE)           | m <sup>3</sup>       | 0.92 / 0.8   |
| <b>Engine</b>                                 |                      |  |
| Model   |                      | Cummins B5.9-C   |
| Type  |                      | Water Cooled 6 Cylinders                                   |
| Flywheel Horsepower                           | ps(kW) / rpm         | 145 (107) / 1900   |
| Max. Torque                                   | kg · m / rpm         | 63 / 1500  |
| Fuel Tank Capacity                            | l                    | 350  |
| <b>Hydraulic System</b>                       |                      |  |
| Type  |                      | Variable Displacement Axial Piston Pump × 2, Gear Pump × 1 |
| System Pressure                               | kg / cm <sup>2</sup> | 320 / 350  |
| Max. Flow Rate                                | l / min              | 2 × 200  |
| <b>Performance</b>                            |                      |  |
| Swing Speed                                   | rpm                  | 11.6   |
| Travel Speed                                  | km / h               | 3.2 / 5.5  |
| Gradeability                                  | deg                  | 35   |
| Max. Tractive Effort                          | kg                   | 18730  |
| Max. Bucket Digging Force (Normal / Power up) | kg                   | 12060 / 13190  |
| Max. Arm Digging Force (Normal / Power up)    | kg                   | 9550 / 10445   |
| Ground Pressure                               | kg / cm <sup>2</sup> | 0.43   |





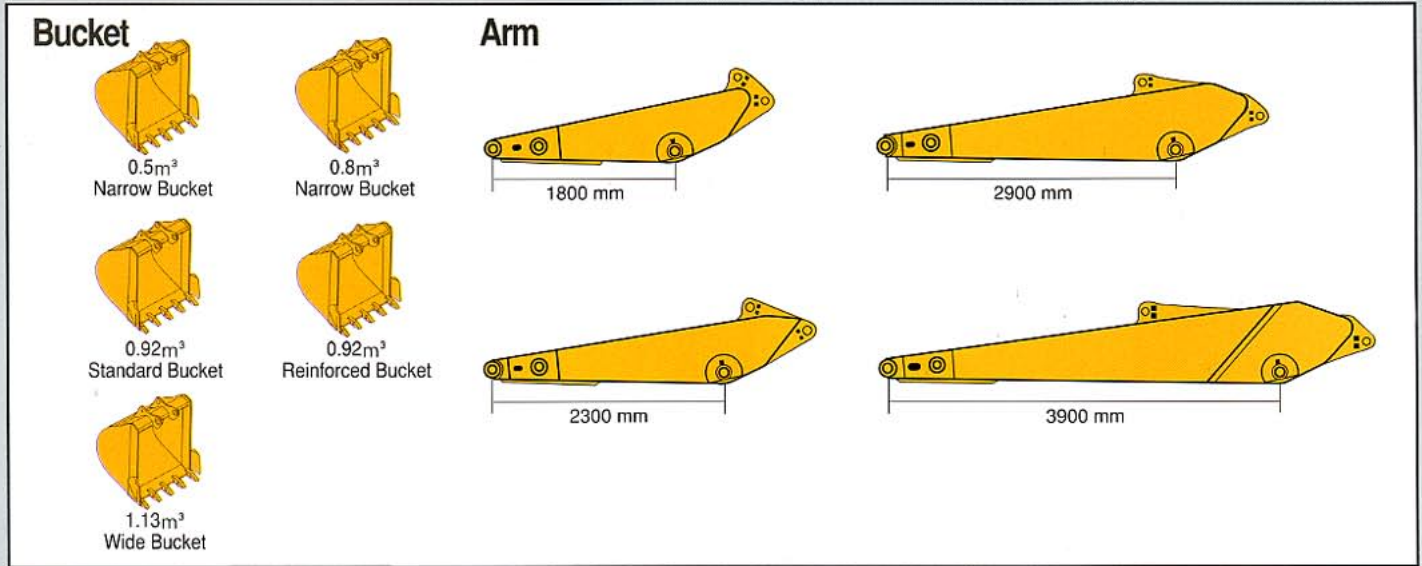
## Working Ranges



| Digging Applications                          | Unit | Extra Short Arm(1.8m) | Short Arm (2.3m) | Standard / HD Arm(2.9m) | Long Arm (3.9m) |
|---|------|-----------------------|------------------|-------------------------|-----------------|
| A. Max. Digging Reach                         | mm   | 8930                  | 9410             | 9940                    | 10760           |
| B. Max. Digging Reach on Ground               | mm   | 8740                  | 9230             | 9750                    | 10610           |
| C. Max. Digging Depth                         | mm   | 5680                  | 6130             | 6730                    | 7780            |
| D. Max. Digging Depth (8' Level)              | mm   | 5320                  | 5910             | 6510                    | 7620            |
| E. Max. Vertical Wall Digging Depth           | mm   | 4250                  | 5420             | 6050                    | 6630            |
| F. Max. Digging Height                        | mm   | 8830                  | 9230             | 9450                    | 9590            |
| G. Max. Dumping Height                        | mm   | 6110                  | 6410             | 6650                    | 6830            |
| H. Min. Front Swing Radius                    | mm   | 3920                  | 3640             | 3650                    | 3645            |
| Max. Bucket Digging Force (Normal / Power up) | kg   | 14700/16080           | 12060/13190      | 12060/13190             | 12060/13190     |
| Max. Arm Digging Force (Normal / Power up)    | kg   | 14800/16190           | 11640/12730      | 9550/10450              | 7990/ 8740      |



# SE210LC-3



## Bucket & Arm Combination

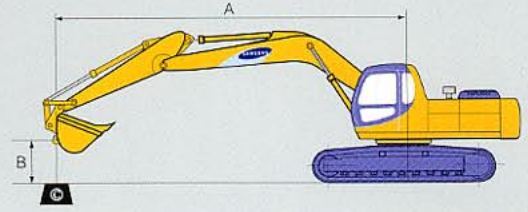
|   |                 | Narrow Bucket | Narrow Bucket | Standard Bucket | Reinforced Bucket | Wide Bucket     |
|---|-----------------|---------------|---------------|-----------------|-------------------|-----------------|
| Bucket Capacity (SAE / CECE)              | m³              | 0.5/0.45      | 0.8/0.7       | 0.92/0.8        | 0.92/0.8          | 1.13/1.0        |
| Bucket Width (with / without Side Cutter) | mm              | 805 / 695     | 1110 / 1000   | 1235 / 1125     | 1235 / 1125       | 1510 / 1400     |
| No. of Teeth                              |                 | 3(★)          | 5(★)          | 5(★)            | 5(★)              | 6(★)            |
| Application                               |                 | Trenching     | Trenching     | General Purpose | Extreme Service   | Loading Service |
| Arm Options                               | Extra Short Arm | 1.8m          | ○             | ○               | ○                 | ○               |
|   | Short Arm       | 2.3m          | ○             | ○               | ○                 | ○               |
|   | Standard Arm    | 2.9m          | ○             | ○               | ○                 | □               |
|   | Long Arm        | 3.9m          | ○             | □               | □                 | X               |
| Remark                                    |                 |               |               | Standard        |                   |                 |

- ★ : Horizontal and vertical pin type are available.
- : Applicable for general purpose up to 2000kg/m³
- : Applicable for light duty up to 1600kg/m³
- X : Not usable.

## Undercarriage

|                      |                  |        |       |       |                 |       |
|----------------------|------------------|--------|-------|-------|-----------------|-------|
| Tripple Grouser Shoe | Shoe Width       | mm     | 600   | 700   | 800             | 900   |
|                      | Overall Width    | mm     | 2990  | 3090  | 3190            | 3290  |
|                      | Operating Weight | kg     | 20500 | 20780 | 21060           | 21340 |
|                      | Ground Pressure  | kg/cm² | 0.43  | 0.38  | 0.33            | 0.30  |
| Swamp Shoe           | Shoe Width       | mm     |       |       | 910             |       |
|                      | Overall Width    | mm     |       |       | 3300            |       |
|                      | Operating Weight | kg     |       |       | 21420           |       |
|                      | Ground Pressure  | kg/cm² |       |       | 0.30            |       |
| Rubber Pad           | Shoe Width       | mm     |       |       | 600(Rubber Pad) |       |
|                      | Overall Width    | mm     |       |       | 2990            |       |
|                      | Operating Weight | kg     |       |       | 21190           |       |
|                      | Ground Pressure  | kg/cm² |       |       | 0.44            |       |





## Lifting Capacities

(Shoe 600mm+Bucket 0.92m³, Counterweight 3500kg)

unit : kg

|                                  |                                  | B          | A              | 0m               | 1m               | 2m               | 3m             | 4m             | 5m             | 6m             | 7m             | 8m            | 9m            | Max.Reach      |                |
|----------------------------------|----------------------------------|------------|----------------|------------------|------------------|------------------|----------------|----------------|----------------|----------------|----------------|---------------|---------------|----------------|----------------|
| Boom<br>5.7m<br>+<br>Arm<br>3.9m | 7m                               | Front Side |                |                  |                  |                  |                |                |                |                |                |               |               | *2410<br>*2410 | 7884 mm        |
|                                  | 6m                               | Front Side |                |                  |                  |                  |                |                |                |                |                | *2860<br>2860 |               | *2370<br>*2370 | 8474 mm        |
|                                  | 5m                               | Front Side |                |                  |                  |                  |                |                |                |                | *2900<br>*2900 | *2960<br>2810 |               | *2380<br>2240  | 8911 mm        |
|                                  | 4m                               | Front Side |                |                  |                  |                  |                |                |                |                | *3210<br>*3210 | *3150<br>2740 | *2890<br>2150 | *2420<br>2040  | 9218 mm        |
|                                  | 3m                               | Front Side |                |                  |                  |                  |                |                |                | *3830<br>*3830 | *3590<br>3400  | *3410<br>2650 | *3300<br>2100 | *2520<br>1910  | 9406 mm        |
|                                  | 2m                               | Front Side |                |                  |                  | *8840<br>*8840   | *6370<br>*6370 | *5160<br>*5160 | *4450<br>4290  | *4000<br>3280  | *3700<br>2550  | 3420<br>2040  | *2650<br>1830 |                | 9484 mm        |
|                                  | 1m                               | Front Side |                |                  |                  | *8470<br>*8470   | *7990<br>7850  | *6140<br>5500  | *5080<br>4090  | *4420<br>3150  | *3980<br>2480  | 3350<br>1970  | *2850<br>1790 |                | 9453 mm        |
|                                  | 0m                               | Front Side |                |                  | *4180<br>*4180   | *6060<br>*6060   | *9270<br>7390  | *6990<br>5220  | *5670<br>3920  | *4820<br>3040  | 4040<br>2400   | 3290<br>1920  | 3110<br>1800  |                | 9314 mm        |
|                                  | -1m                              | Front Side | *4170<br>*4170 | *4140<br>*4140   | *5290<br>*5290   | *6600<br>*6600   | *10080<br>7110 | *7630<br>5020  | *6130<br>3770  | 4950<br>2940   | 3970<br>2340   | 3250<br>1880  | 3210<br>1860  |                | 9061 mm        |
|                                  | -2m                              | Front Side | *5300<br>*5300 | *4030<br>*4030   | *5130<br>*5130   | *8100<br>*8100   | *10470<br>6960 | *8010<br>4890  | 6270<br>3680   | 4870<br>2870   | 3920<br>2290   |               | 3430<br>1990  |                | 8683 mm        |
|                                  | -3m                              | Front Side | *6170<br>*6170 | *5830<br>*5830   | *7130<br>*7130   | *10220<br>*10220 | *10500<br>6910 | *8140<br>4830  | 6210<br>3630   | 4840<br>2840   | 3910<br>2280   |               | 3780<br>2210  |                | 8163 mm        |
|                                  | -4m                              | Front Side |                | *7810<br>*7810   | *9470<br>*9470   | *13040<br>11550  | *10200<br>6940 | *7990<br>4830  | 6210<br>3620   | 4840<br>2840   |                |               | 4370<br>2570  |                | 7471 mm        |
|                                  | -5m                              | Front Side |                | *10120<br>*10120 | *12340<br>*12340 | *12580<br>11750  | *9520<br>7040  | *7510<br>4900  | *6030<br>3680  |                |                |               | *5340<br>3210 |                | 6551 mm        |
|                                  | -6m                              | Front Side |                |                  | *15320<br>*15320 | *10850<br>*10850 | *8290<br>7230  | *6500<br>5030  |                |                |                |               | *6060<br>4620 |                | 5280 mm        |
|                                  | Boom<br>5.7m<br>+<br>Arm<br>2.9m | 7m         | Front Side     |                  |                  |                  |                |                |                |                |                |               |               |                | *3160<br>*3160 |
| 6m                               |                                  | Front Side |                |                  |                  |                  |                |                |                |                | *3540<br>*3540 |               |               | *3080<br>*3080 | 7504 mm        |
| 5m                               |                                  | Front Side |                |                  |                  |                  |                |                | *3760<br>*3760 | *3680<br>3530  |                |               |               | *3080<br>2730  | 7996 mm        |
| 4m                               |                                  | Front Side |                |                  |                  |                  | *4550<br>*4550 | *4200<br>*4200 | *3950<br>3430  | *3810<br>2680  |                |               |               | *3150<br>2470  | 8337 mm        |
| 3m                               |                                  | Front Side |                |                  |                  | *8990<br>*8990   | *6540<br>*5370 | *4700<br>4340  | *4290<br>3310  | *4010<br>2610  |                |               |               | *3280<br>2300  | 8545 mm        |
| 2m                               |                                  | Front Side |                |                  |                  | *4980<br>*4980   | *8150<br>7970  | *6280<br>5610  | *5260<br>4180  | *4640<br>3220  | 4170<br>2530   |               |               | *3480<br>2210  | 8631 mm        |
| 1m                               |                                  | Front Side |                |                  |                  | *5090<br>*5090   | *9510<br>7500  | *7130<br>5340  | *5810<br>4020  | *5000<br>3120  | 4100<br>2470   |               |               | 3640<br>2170   | 8597 mm        |
| 0m                               |                                  | Front Side |                |                  |                  | *5160<br>*5160   | *10330<br>7210 | *7780<br>5140  | 6270<br>3890   | 5050<br>3040   | 4050<br>2420   |               |               | 3700<br>2200   | 8443 mm        |
| -1m                              |                                  | Front Side |                |                  | *5800<br>*5800   | *5170<br>*5170   | *10660<br>7090 | *8170<br>5010  | 6380<br>3790   | 4980<br>2980   | 4010<br>2390   |               |               | 3880<br>2310   | 8162 mm        |
| -2m                              |                                  | Front Side |                | *7040<br>*7040   | *5200<br>*5200   | *8130<br>*8130   | *10630<br>7060 | *8290<br>4960  | 6330<br>3740   | 4940<br>2940   |                |               | 4220<br>2510  |                | 7740 mm        |
| -3m                              |                                  | Front Side |                | *5900<br>*5900   | *8360<br>*8360   | *11660<br>*11660 | *10290<br>7100 | *8130<br>4960  | 6320<br>3740   | 4950<br>2950   |                |               | 4790<br>2860  |                | 7150 mm        |
| -4m                              |                                  | Front Side |                |                  | *11920<br>*11920 | *12370<br>11980  | *9590<br>7200  | *7640<br>5020  | *6160<br>3790  |                |                |               | *5690<br>3480 |                | 6346 mm        |
| -5m                              |                                  | Front Side |                |                  |                  | *10710<br>*10710 | *8390<br>7370  | *6630<br>5150  |                |                |                |               | *6280<br>4820 |                | 5224 mm        |

- Notes : 1. The above loads are in compliance with SAE and ISO Hydraulic Excavator Lift Capacity Standards.  
 2. Rated loads do not exceed 87% of hydraulic lifting capacity or 75% of tipping load.  
 3. Rated loads marked with an asterisk (\*) are limited by hydraulic capacity rather than tipping load.



# SE210LC-3

## Lifting Capacities

(Shoe 600mm+Bucket 0.92m³, Counterweight 3500kg)

unit : kg

|                                  | A                                |            | 0m         | 1m | 2m             | 3m               | 4m             | 5m             | 6m             | 7m            | 8m           | 9m            | Max.Reach      |                |
|----------------------------------|----------------------------------|------------|------------|----|----------------|------------------|----------------|----------------|----------------|---------------|--------------|---------------|----------------|----------------|
|                                  | B                                |            |            |    |                |                  |                |                |                |               |              |               |                |                |
| Boom<br>5.7m<br>+<br>Arm<br>2.3m | 7m                               | Front Side |            |    |                |                  |                |                | *4020<br>*4020 |               |              |               | *4050<br>*4050 | 6139 mm        |
|                                  | 6m                               | Front Side |            |    |                |                  |                |                | *4030<br>*4030 |               |              |               | *4070<br>3620  | 6885 mm        |
|                                  | 5m                               | Front Side |            |    |                |                  |                |                | *4290<br>*4290 | *4150<br>3480 |              |               | *4140<br>3120  | 7418 mm        |
|                                  | 4m                               | Front Side |            |    |                | *7250<br>*7250   | *6070<br>*6070 | *5210<br>*5210 | *4710<br>4410  | *4370<br>3390 |              |               | *4240<br>2800  | 7785 mm        |
|                                  | 3m                               | Front Side |            |    |                |                  | *7580<br>*7580 | *6010<br>5770  | *5180<br>4280  | *4680<br>3290 | 4240<br>2600 |               | 4230<br>2600   | 8008 mm        |
|                                  | 2m                               | Front Side |            |    |                |                  | *5290<br>*5290 | *6880<br>5500  | *5690<br>4140  | *4990<br>3200 | 4180<br>2540 |               | 4090<br>2490   | 8099 mm        |
|                                  | 1m                               | Front Side |            |    |                |                  | *5010<br>*5010 | *7620<br>5270  | *6180<br>3990  | 5130<br>3120  | 4120<br>2490 |               | 4060<br>2460   | 8064 mm        |
|                                  | 0m                               | Front Side |            |    |                |                  | *4970<br>*4970 | *8120<br>5110  | 6480<br>3890   | 5060<br>3050  |              |               | 4160<br>2500   | 7899 mm        |
|                                  | -1m                              | Front Side |            |    |                | *5420<br>*5420   | *10710<br>7100 | *8340<br>5030  | 6400<br>3820   | 5010<br>3010  |              |               | 4400<br>2640   | 7598 mm        |
|                                  | -2m                              | Front Side |            |    | *6200<br>*6200 | *7930<br>*7930   | *10440<br>7130 | *8290<br>5010  | 6380<br>3800   | 5000<br>3000  |              |               | 4850<br>2910   | 7141 mm        |
|                                  | -3m                              | Front Side |            |    | *9430<br>*9430 | *12430<br>12000  | *9890<br>7210  | *7940<br>5050  | 6410<br>3820   |               |              |               | 5660<br>3400   | 6496 mm        |
|                                  | -4m                              | Front Side |            |    | *4990<br>*4990 | *11170<br>*11170 | *8950<br>7350  | *7190<br>5150  |                |               |              |               | *6270<br>4340  | 5594 mm        |
|                                  | -5m                              | Front Side |            |    |                |                  | *7310<br>*7310 |                |                |               |              |               | *6840<br>6820  | 4271 mm        |
|                                  | Boom<br>5.7m<br>+<br>Arm<br>1.8m | 7m         | Front Side |    |                |                  |                |                |                |               |              |               |                | *4410<br>*4410 |
| 6m                               |                                  | Front Side |            |    |                |                  |                |                | *4390<br>*4390 |               |              |               | *4400<br>4020  | 6448 mm        |
| 5m                               |                                  | Front Side |            |    |                |                  |                | *4980<br>*4980 | *4610<br>4510  | *4450<br>3420 |              |               | *4450<br>3400  | 7016 mm        |
| 4m                               |                                  | Front Side |            |    |                |                  | *6810<br>*6810 | *5670<br>*5670 | *5010<br>4360  | *4620<br>3350 |              |               | *4540<br>3030  | 7403 mm        |
| 3m                               |                                  | Front Side |            |    |                |                  |                | *6460<br>5630  | *5490<br>4190  | *4900<br>3260 |              |               | 4560<br>2800   | 7638 mm        |
| 2m                               |                                  | Front Side |            |    |                |                  |                | *7270<br>5370  | *5960<br>4050  | 5170<br>3160  |              |               | 4400<br>2680   | 7734 mm        |
| 1m                               |                                  | Front Side |            |    |                |                  |                | *7910<br>5160  | *6380<br>3930  | 5080<br>3070  |              |               | 4370<br>2650   | 7696 mm        |
| 0m                               |                                  | Front Side |            |    |                |                  | *8130<br>6940  | *8260<br>5040  | 6430<br>3840   | 5020<br>3020  |              |               | 4490<br>2700   | 7524 mm        |
| -1m                              |                                  | Front Side |            |    |                |                  | *8210<br>6950  | *8330<br>5000  | 6380<br>3800   | 5000<br>3000  |              |               | 4780<br>2870   | 7206 mm        |
| -2m                              |                                  | Front Side |            |    | *9810<br>*9810 | *8160<br>*8160   | *10030<br>7150 | *8130<br>5010  | 6380<br>3800   |               |              |               | 5340<br>3210   | 6722 mm        |
| -3m                              |                                  | Front Side |            |    | *8300<br>*8300 | *11190<br>*11190 | *9340<br>7270  | *7620<br>5080  | *6110<br>3860  |               |              |               | *6070<br>3830  | 6031 mm        |
| -4m                              | Front Side                       |            |            |    | *9890<br>*9890 | *8180<br>7450    | *6550<br>5230  |                |                |               |              | *6470<br>5160 | 5044 mm        |                |

- Notes : 1. The above loads are in compliance with SAE and ISO Hydraulic Excavator Lift Capacity Standards.  
 2. Rated loads do not exceed 87% of hydraulic lifting capacity or 75% of tipping load.  
 3. Rated loads marked with an asterisk (\*) are limited by hydraulic capacity rather than tipping load.





## Standard Equipment

- Air Cleaner
- Adjustable Monitor
- Alternator(50A)
- Automatic Travel System
- Automatic Idling System
- Automatic Deaeration System
- Auxiliary Hydraulic Valve
- Batteries
- Battery Sealing Cover
- Boom/Arm Holding Valve
- Bucket Cylinder Cushion
- Dampening Cab Mounts
- Engine Restart Prevention Circuit
- Hydraulic Track Adjusters
- Integrated Mode Selection System
- Joysticks, Pilot-operated
- Cab, All-weather Sound Suppressed, Includes :
  - Ashtray
  - Cigar Lighter
  - Door Locks
  - Floor Mat
  - Horn
  - Hot & Cool Box
  - Pull-up Type Front Window
  - Removable Lower Windshield
  - Seat
  - Seat Belt
  - Safety Glasses
  - Windshield Wiper with Intermittent Feature
- Lights :
  - Frame Mounted, Two
  - Boom Mounted, Two
- Low Emission Engine
- Master Switch
- Mirrors
- One Touch Power Boost
- Safe Engine Start/Stop Function
- Self-diagnostic System
- Sealed & Greased Track
- Starting Motor(24 volt, 7.46kW)
- Straight Travel Circuit
- Tiltable Oil Cooler
- Tool Box, Locking
- Track Guards
- Water Separator, Fuel line

## Optional Equipment

- Anti-drop Valve : Boom, Arm
- Air Conditioner
- Air Heater
- Automatic Greasing System
- Block Heater : 120V, 240V
- Cab Guard
- Falling Object Guard (FOG)
- Fuel Filler Pump
- Fuel Warmer
- Heater
- Overload Warning Device
- Precleaner
- Purifier
- Rubber Pads Mounted on Track Shoes
- Spare Parts
- Stereo Cassette Radio (AM/FM)
- Tool Kit
- Travel Alarm
- Vandalism Kit

\* Specifications may vary by the region without notice.

\* All materials contained within are confidential to Samsung Global Sales Force and may not be copied without the pre-approval of Samsung.

\* Materials and specifications are subject to change without notice.



*Under our policy of continuous improvement, we reserve the right to change specifications and design without prior notice.  
The illustrations do not necessarily show the standard version of the machine.*

**VOLVO**

**Volvo Construction  
Equipment Group**

Ref. No. 21 1 435 1204  
Printed in Korea 98.08-2  
Volvo, Seoul

English  
KOR