

# SPOTLIGHT ON THE NEW EB 150 AND EB 200



**Pel-Job**   
*The difference on the site.*

In-house document reserved  
for the Pel-Job network salesmen





**EB 150 XR**



**EB 150 XT**



**EB 150 XTV**



**EB 200 XT**



**EB 200 XTV**

One mini-excavator in two sold in Europe weighs from 1 to 2 tonnes, which underlines the size of this market. Thanks to their compact dimensions, these machines are used on all sites where bulkier excavator would simply be too unwieldy.

With the new EB 150 and EB 200, in this sector Pel-Job offers the most extensive range on the market comprising five compact shovels of 1.5 to 2 tonnes.

Following three years of studies and trials, these machines include the many innovations requested and awaited by our clients.

This guide will tell you more about these new compact excavator which, in keeping with the Pel-Job tradition, will make all the difference to every one of your sites.

**Pel-Job** 

*The difference on the site.*

# WHAT ARE OUR CLIENTS LOOKING FOR ?

## QUALITY



Pages 12 to 15

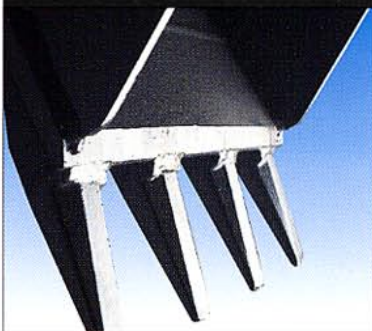
A satisfied client is a faithful client. Hence our policy of zero-fault design: the meticulous selection of components, uncompromising tests and multiple production controls are the bases ensuring the quality of our machines.



Pages 4 to 5

Pages 6 to 9

## PERFORMANCE



Pel-Job has always made a point of producing high-performance machines designed to make all the difference on site. In line with this tradition, the new EB 150 and EB 200 provide the highest bucket forces within their class.

## THE CHOICE



The new Pel-Jobs come in a total of five different models, enabling the client to choose just the right excavator to meet his site requirements, his constraints... and his budget !



Pages 20 to 24

## COMFORT



Have you ever spent eight hours at the controls of a excavator? So have our testers. We know that comfort is an entirely legitimate requirement. More space, less noise, less fatigue: the new cabin will appeal to all.

Page 11

## STYLING



We're sure you'll agree that the styling of the new Pel-Jobs is a success. But its good looks aren't the whole story: the styling is also functional as can be seen from the very high all-round shape of the counterweight for maximum rear and protection.

Pages 16 to 19

Page 10

Pages 25 to 27

## INNOVATION



The new EB 200 XTV alone represents a unique concept : a performance worthy of a 2.5 tonne machine in a machine less than one metre wide. Who else but Pel-Job could come up with that ?

## STURDINESS



We all know what demands are placed on a compact excavator on the site. That is why numerous guards have been fitted at all the sensitive points to ensure high resistance to all shocks.

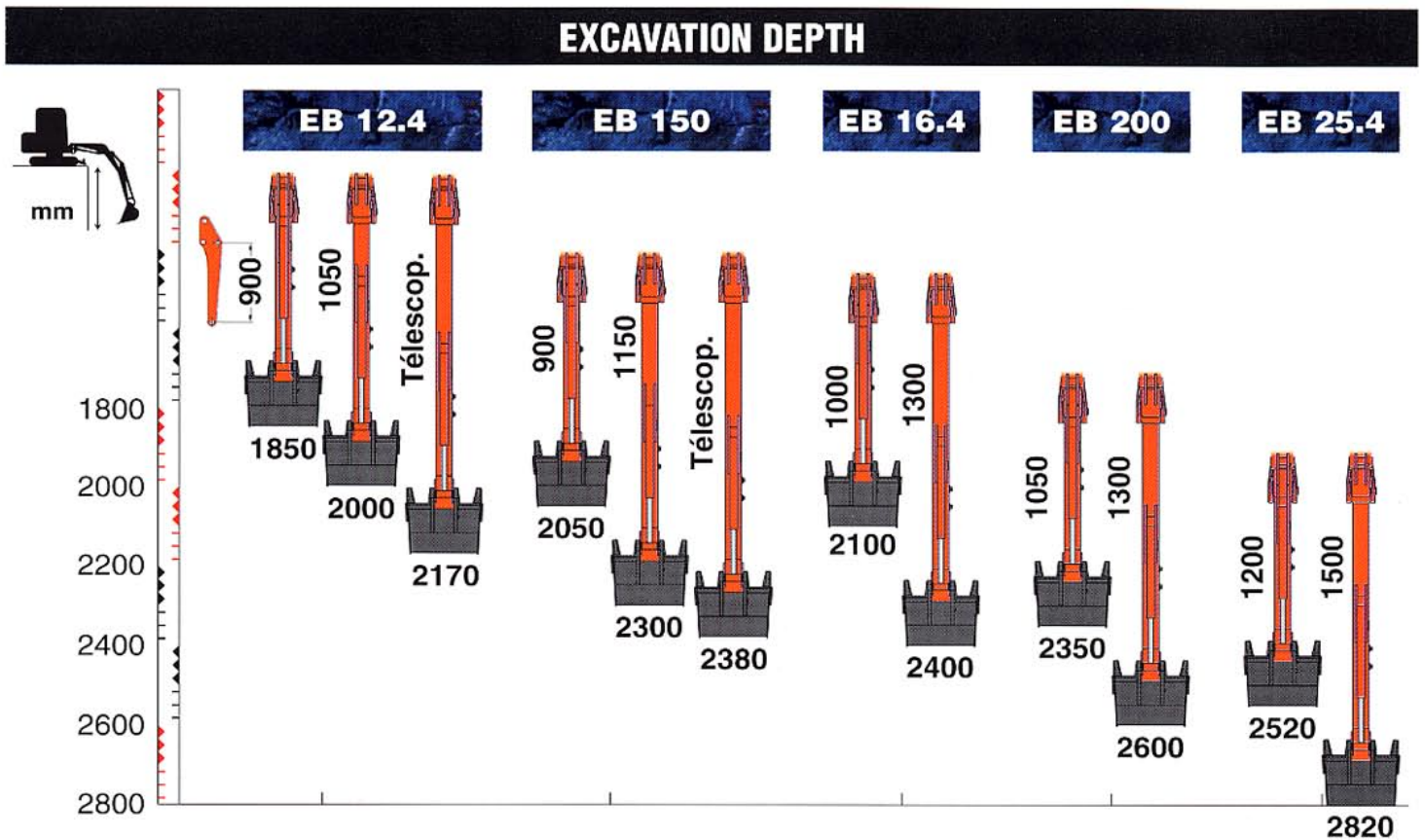
## MAINTENANCE



Our clients don't want to waste time. Thus all maintenance operations have been simplified and intervals extended. The tilting counterweight gives full access to the engine is arguably the best of many examples.

# IN THE LEAD BY YET ANOTHER

The Pel-Job models EB 124, 14.4 and 16.4 had already earned a reputation for their very high performance. And now the new EB 150 and EB 200 forge even further ahead to set a new market standard.

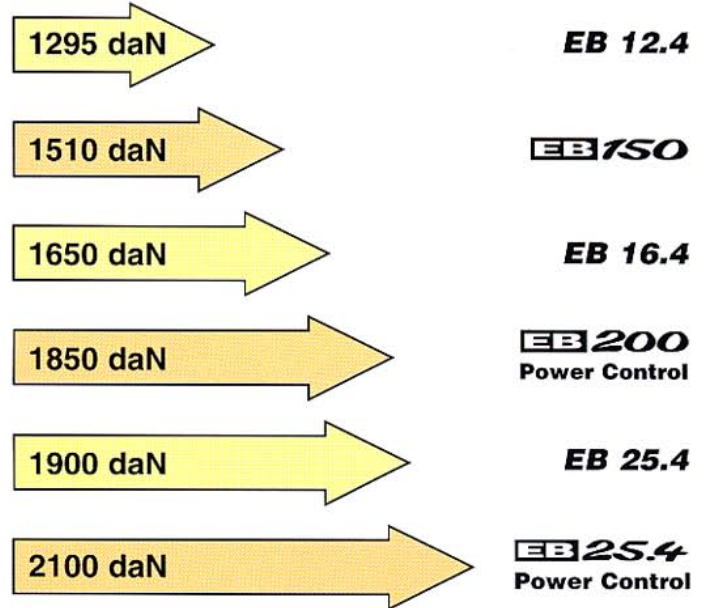
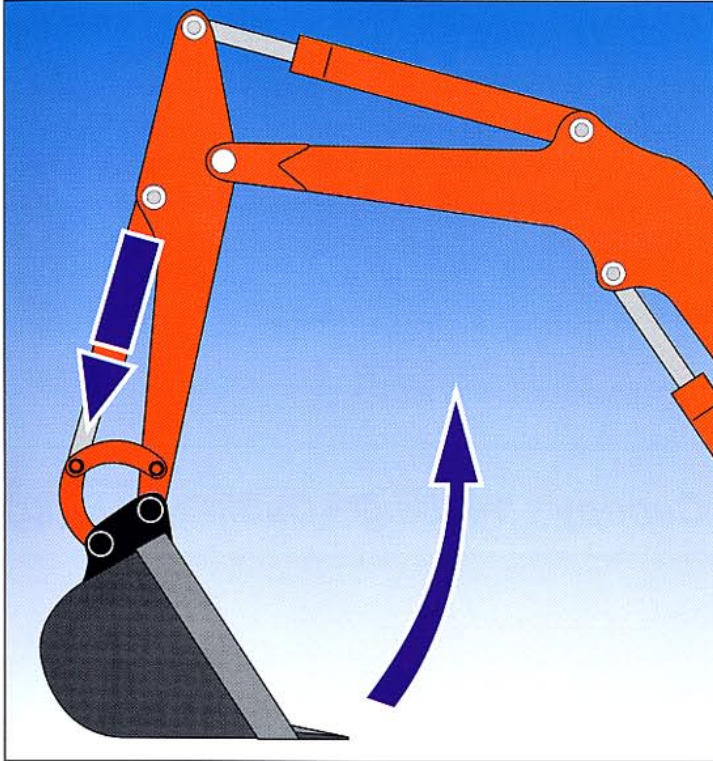


# LENGTH

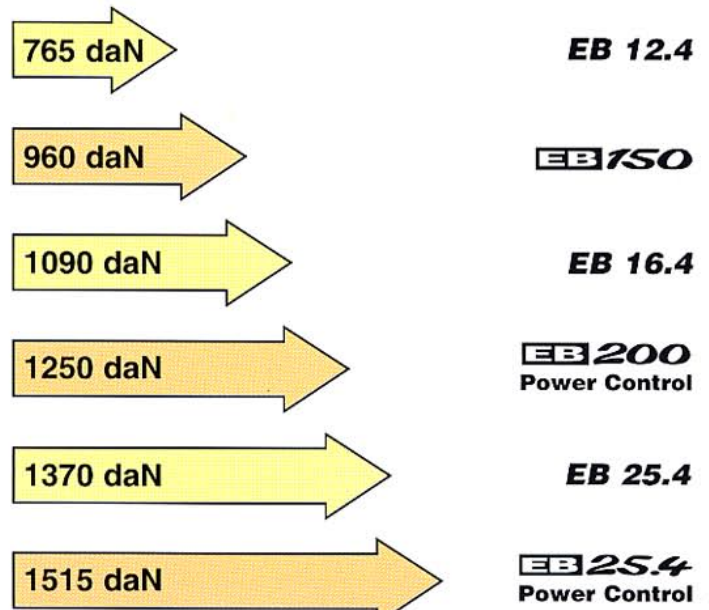
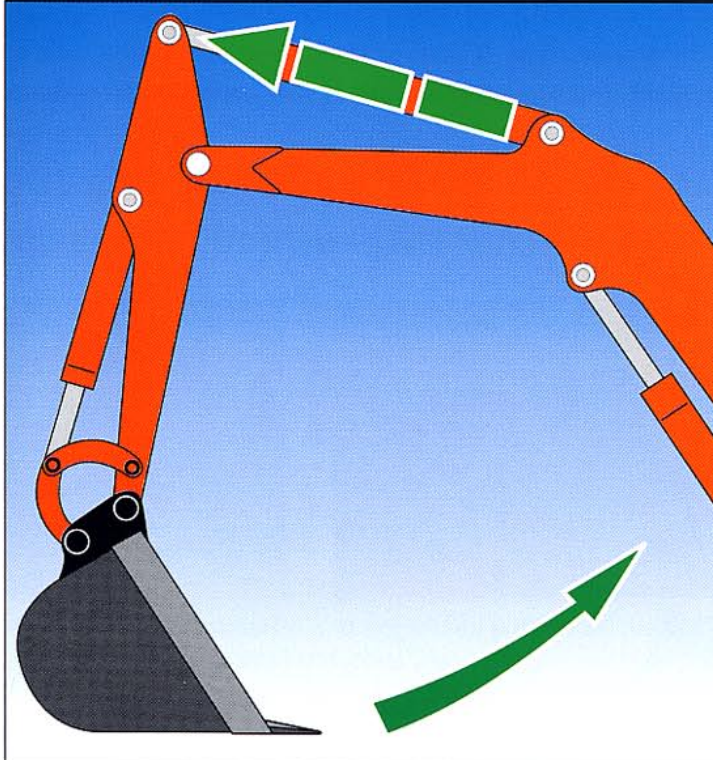
A quick glance at the comparisons below will show you the progress made from one generation of Pel-Jobs to the next.



## DIGGING FORCE



## TEAROUT FORCE



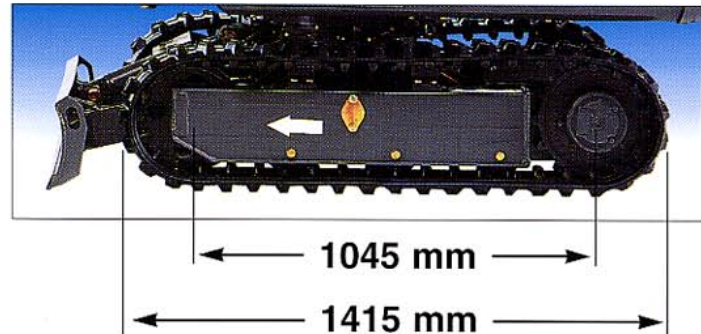
# THE MOST EXTENSIVE RANGE ON

All the EB 150s (XR, XT and XTV) have the same engine, the same distributors and the same pumps calibrated to identical pressures. Their equipment (boom, arm and bucket) is also identical. Thus these three Pel-Jobs give the same bucket performance.

## EB 150 XR



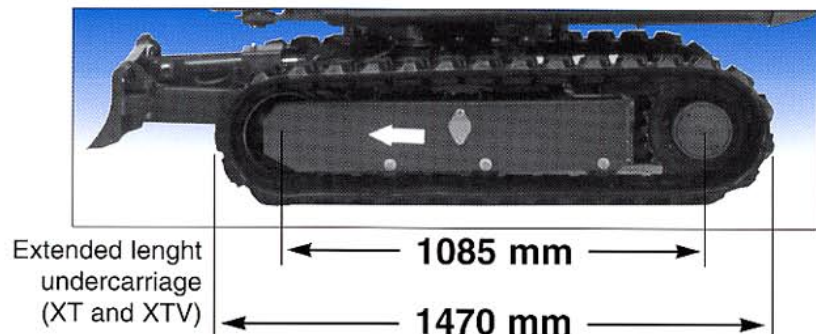
Canopy : 1435 kg - Cabin : 1565 kg



## EB 150 XT



Canopy : 1485 kg - Cabin : 1615 kg



The EB 150 XT offers a high degree of comfort: on the cabin versions, the "Comfort Pack" and reinforced sound insulation are included as standard. The two travelling speeds and the anti-vibration profile of the tracks allow the machine to be moved rapidly all over the site.

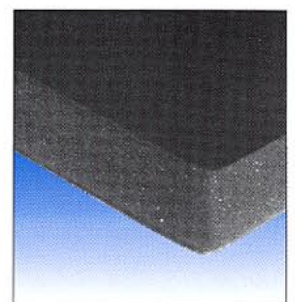
### ADDITIONAL EQUIPMENT ON THE XT AND XTV VERSIONS COMPARED WITH THE XR VERSION



Insulated double roof over the cabin\*



Glove compartment behind the seat\*



Reinforced cabin sound insulation

\*Comfort Pack

N.B: The comfort pack is only included in the cabin versions. The canopy is identical on all the XR, XT and XTV versions.



# THE MARKET

The only differences are found in the underframe and the degree of cabin comfort.



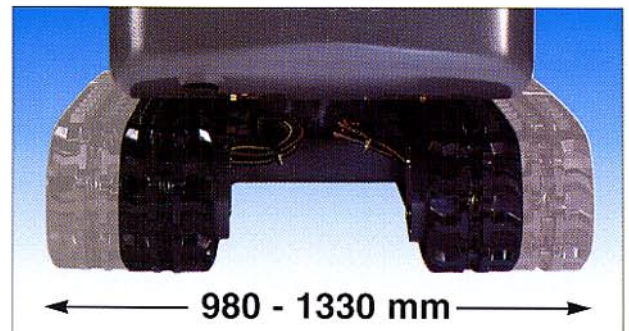
The first model in the EB 150 range, the XR version offers 100% of the performance levels common to all the EB 150. Designed basically for clients concerned with cost effectiveness, it is distinguished by its outstanding cost/performance ratio and its exceptional sturdiness.

## EB 150 XTV

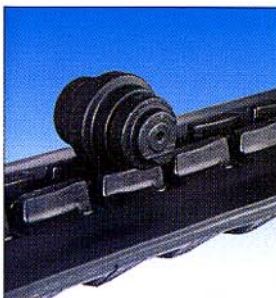
**Canopy : 1605 kg - Cabin : 1735 kg**



Variable-width undercarriage



With its hydraulic variable-width underframe, the EB 150 XTV provides an exceptional margin of lateral stability in all problem situations (work on the slant or on the side, handling jobs, etc.)



Two travelling speeds

Anti-vibration track profile and bright-polishes idlers for a longer service life



# THE NEW EB 200: A UNIQUE MACHINE

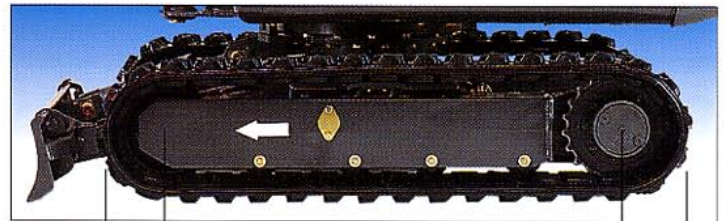
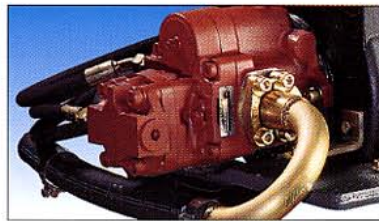
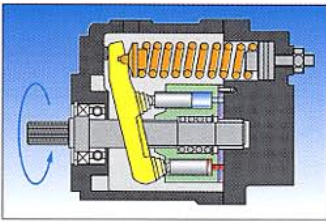
The performance of this new Pel-Job, which is unique on the market, is equivalent to and even better than that of many of the competing 2.5 tonne machines, at the same time as being more compact and easier to transport thanks to its weight of less than 2 tonnes.

## EB 200 XT

**Canopy : 1650 kg - Cabin : 1780 kg**



An outstandingly efficient Pel-Job, whose exceptional performance is ensured by the Power Control variable-discharge pump. The Comfort Pack on the cabin versions plus two running speeds are part of the standard equipment.



Bucket force comparable to that of many 2.5 tonne models on the market with the Power Control pump

1240 mm

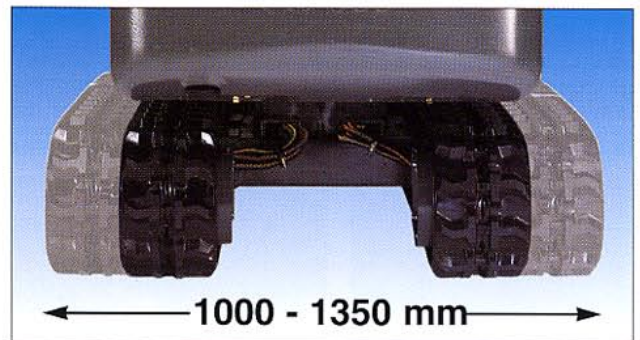
1630 mm

## EB 200 XTV

**Canopy : 1745 kg - Cabin : 1875 kg**



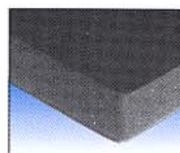
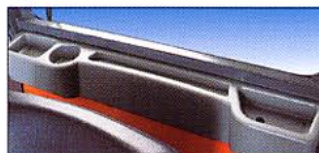
The variable-width undercarriage on the EB 200 XTV means full advantage can be taken of the high performance ensured by this Pel-Job. The operator can at any time select the machine width he requires, from one metre for a go-anywhere operation up to 1.35 metres for exceptional stability.



Variable-width undercarriage

1000 - 1350 mm

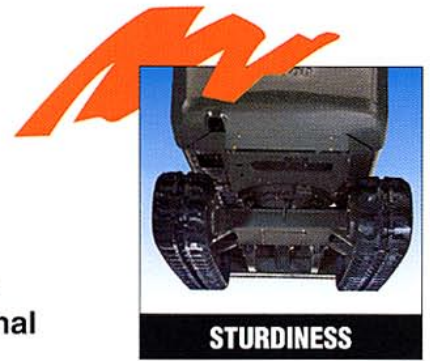
### STANDARD EQUIPMENT EB 200 XT / XTV





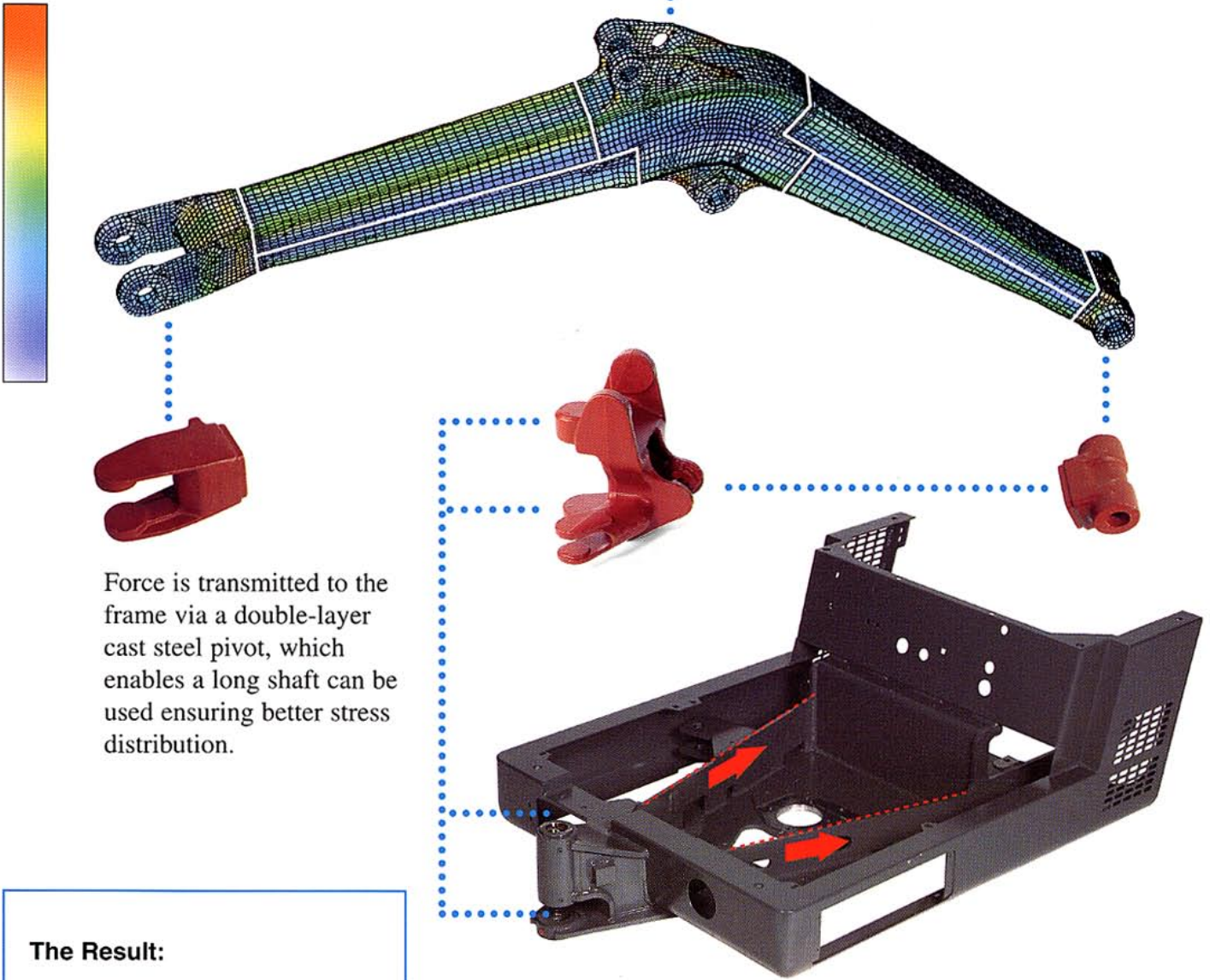
The considerably greater dumping heights enable a "6x4" to be loaded without any problems.

# THE NEW WELDED STRUCTURE FOR INCREASED STURDINESS



The new EB 150 and EB 200 models are designed to stand up to the toughest working conditions. The boom represents an entirely original concept using cast steel in all areas subjected to a high stress concentration. At the same time, all the welds are located on the neutral fibre, i.e. in the area subjected to the least stress.

All this means that boom rigidity is appreciably increased without any additional weight so as to retain the shovel's balance and handling capacity.



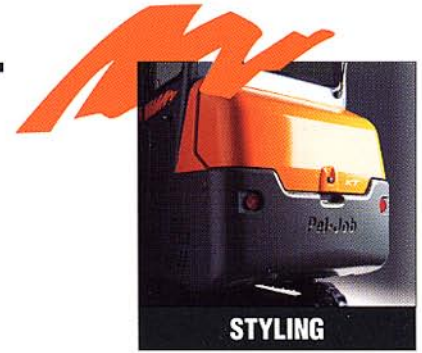
Force is transmitted to the frame via a double-layer cast steel pivot, which enables a long shaft can be used ensuring better stress distribution.

**The Result:**

- A lighter and more rigid boom
- Stress distributed over the whole of the frame

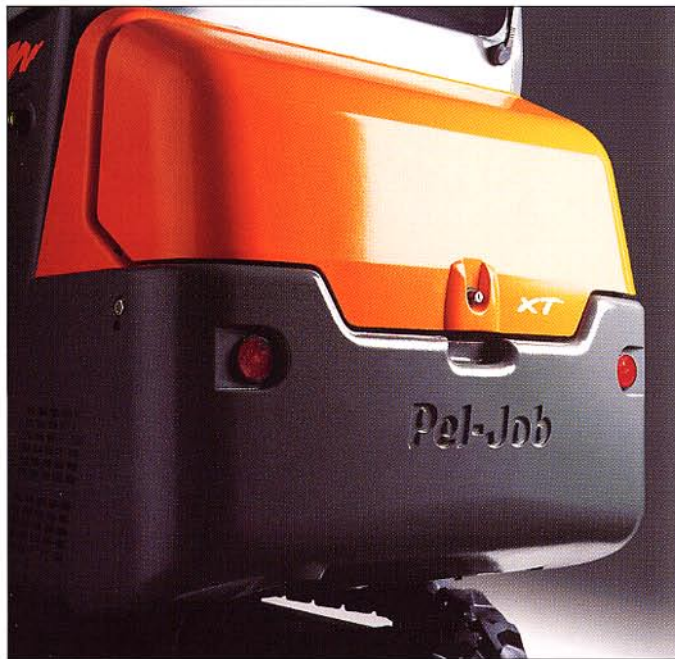
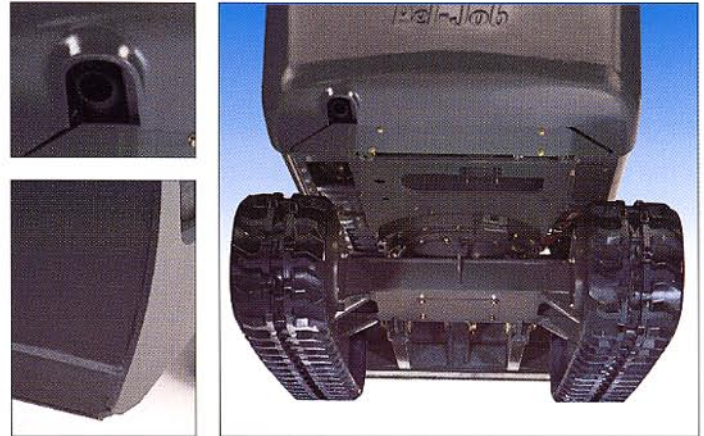
This stress is then taken up by two V-beams which distribute it over the whole of the mechanically welded frame of the turret.

# EXCAVATORS PROTECTED AGAINST ALL EVENTUALITIES



## Integral protection of all of the lower section.

- Protective plate under the engine rump: no risk of holing.
- Exhaust port protected by a boss on the counterweight: no risk of tearing off or obstruction if the counterweight rubs up against a slope.
- Armoured travel geared motors and feed hoses.
- Cutting edge welded to the blade.



## Compact shockproof rear section.

- Extra-high all-round cast iron counterweight.
- Casing in dimensionally stable polymer resin ("Telene Mastershok") identical to the materials used in the manufacture of car bumpers. High absorption of violent shocks, regains its initial shape following any shock, good paint retention, no risk of corrosion.
- Engine cover set back from the counterweight and angled so as to reduce the risk of shocks.
- Lock recessed for greater protection.

## Lifting eyes on the top of the excavator

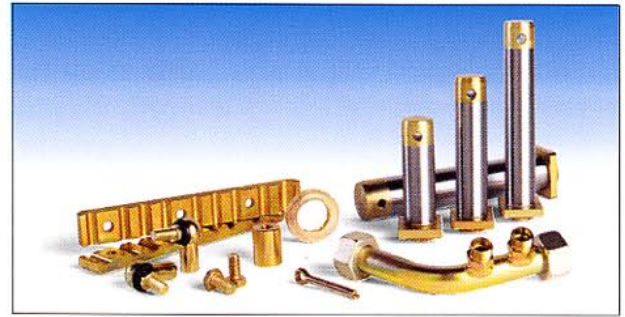
- Two lifting eyes on the cabin or canopy roof.
- One lifting eye on the top of the equipment.
- Easy excavator coupling with no risk of canopy or cabin damage from straps or chains.
- Maximum safety ensured when slinging.



# QUALITY ENSURING RELIABILITY

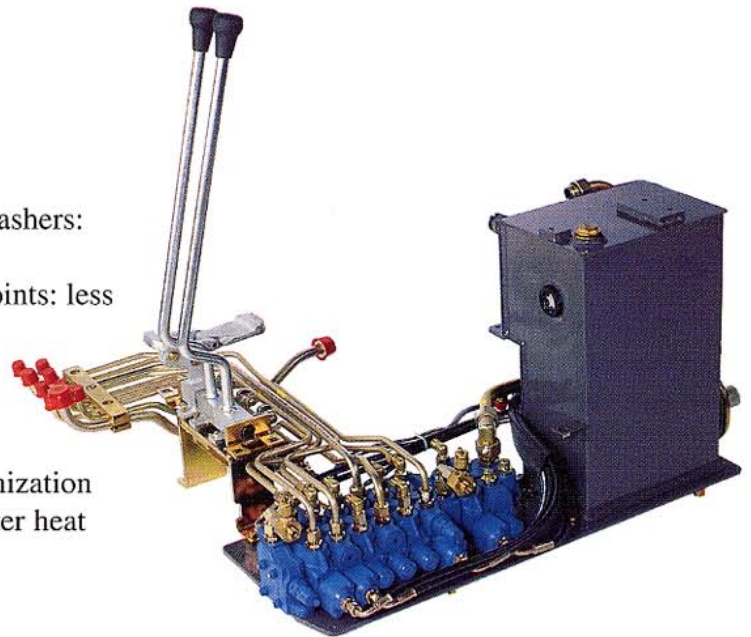
## Excellent protection against corrosion

- all fastenings, shafts and hydraulic lines are galvanized and chromated
- the cabin and the canopy are treated by cathaphoresis (total immersion in a paint bath) ensuring full protection, even in the hollow bodies
- all parts are painted prior to assembly: no part of the excavator is left unpainted
- the Telene covers are corrosion-proof
- the client may have a special colour on request



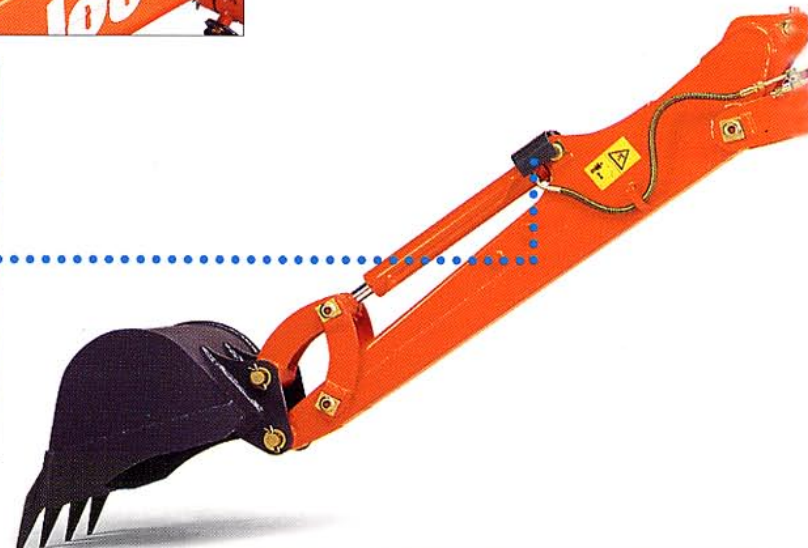
## Meticulous Assembly

- lateral play on the shafts is limited by polyamide washers: less impact noise while working
- simplified travel controls plus large-diameter ball joints: less play, more accuracy
- a maximum of rigid internal pipework: less risk of friction, wear and working loose, ensuring reduced maintenance and repairs
- no hydraulic tube is painted (protection is by galvanization and chromating): no damage to appearance and better heat exchange



## Complete protection of all rams and hydraulic connections

- blade ram protection
- protection of all ram connection units
- boom ram rod protection
- new tube routing on the bucket and arm rams: no risk of shocks



# AND A LONG SERVICE LIFE



## Reinforced Lateral Brackets

- metal internal reinforcement supporting the control levers
- new bellows fixed over the whole profile providing enhanced bellows stability on the bracket.
- new throttle control with reinforced cable and return spring ensuring operational reliability.



# QUALITY ENSURING RELIABILITY

## Direct slewing ring drive

- high-capacity high-torque hydraulic motor
- no reduction gear: the motor drives the ring directly
- greater slewing accuracy
- gear noise eliminated
- wear eliminated to cut maintenance costs



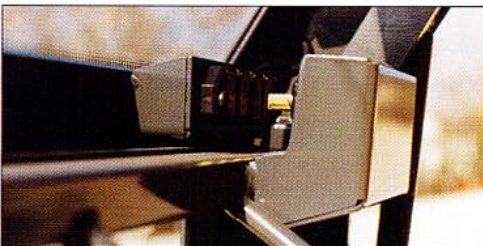
## Protective cap for the engine starting contactor

- no risk of water inleakage: safety
- freeze protection: starting guaranteed in winter



## Rollers of the XT and XTV versions mounted with ice seal

- better leaktightness: longer life

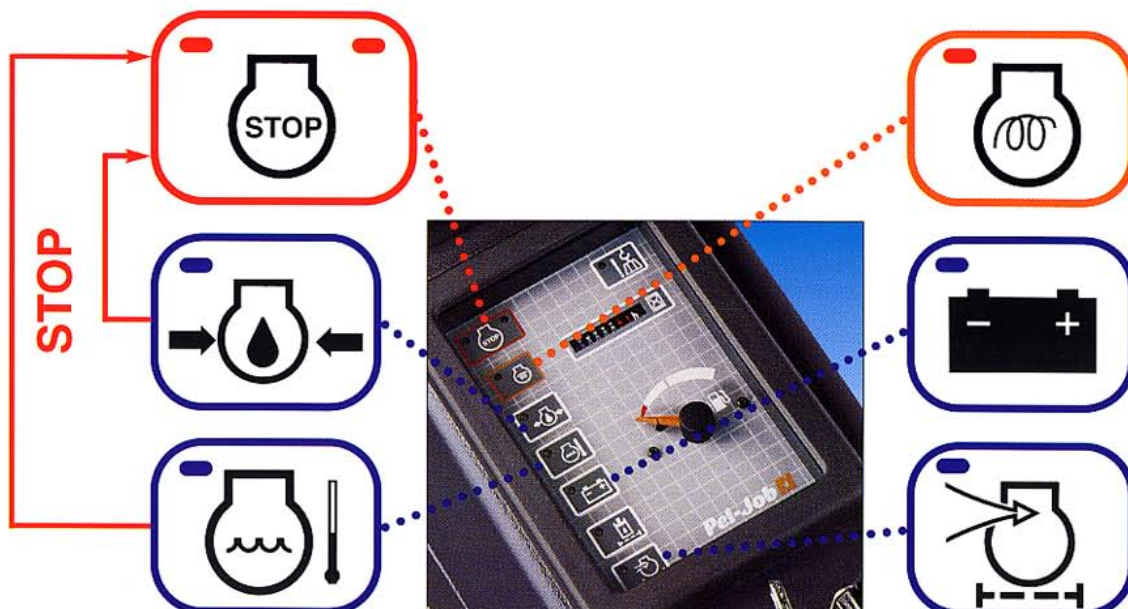


## Contact supply of the windscreen wiper motor

- no electrical wire between the cab and the opening windscreen: better finish, no risk of pull-out
- windscreen wiper cannot be actuated when the windscreen is open: reliability

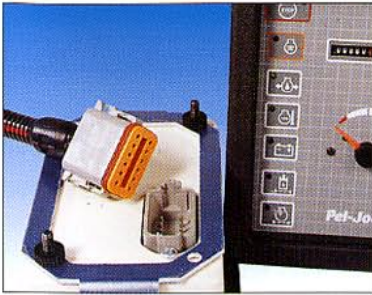
## Automatic engine watch

- automatic stopping in case of overheating or dropping of engine oil pressure: engine reliability
- starter cannot be actuated with the engine turned on: starter protection if the ignition key is accidentally operated





# AND A LONG SERVICE LIFE



## Top-quality wiring and connections

- leaktightness (IP 66) of all connections: risk-free washing with high-pressure cleaner
- leaktightness of the dashboard front panel: no condensation behind the glass



## Cab and canopy directly fixed on the chassis

- less vibrations
- greater sturdiness



## Additional light (option)

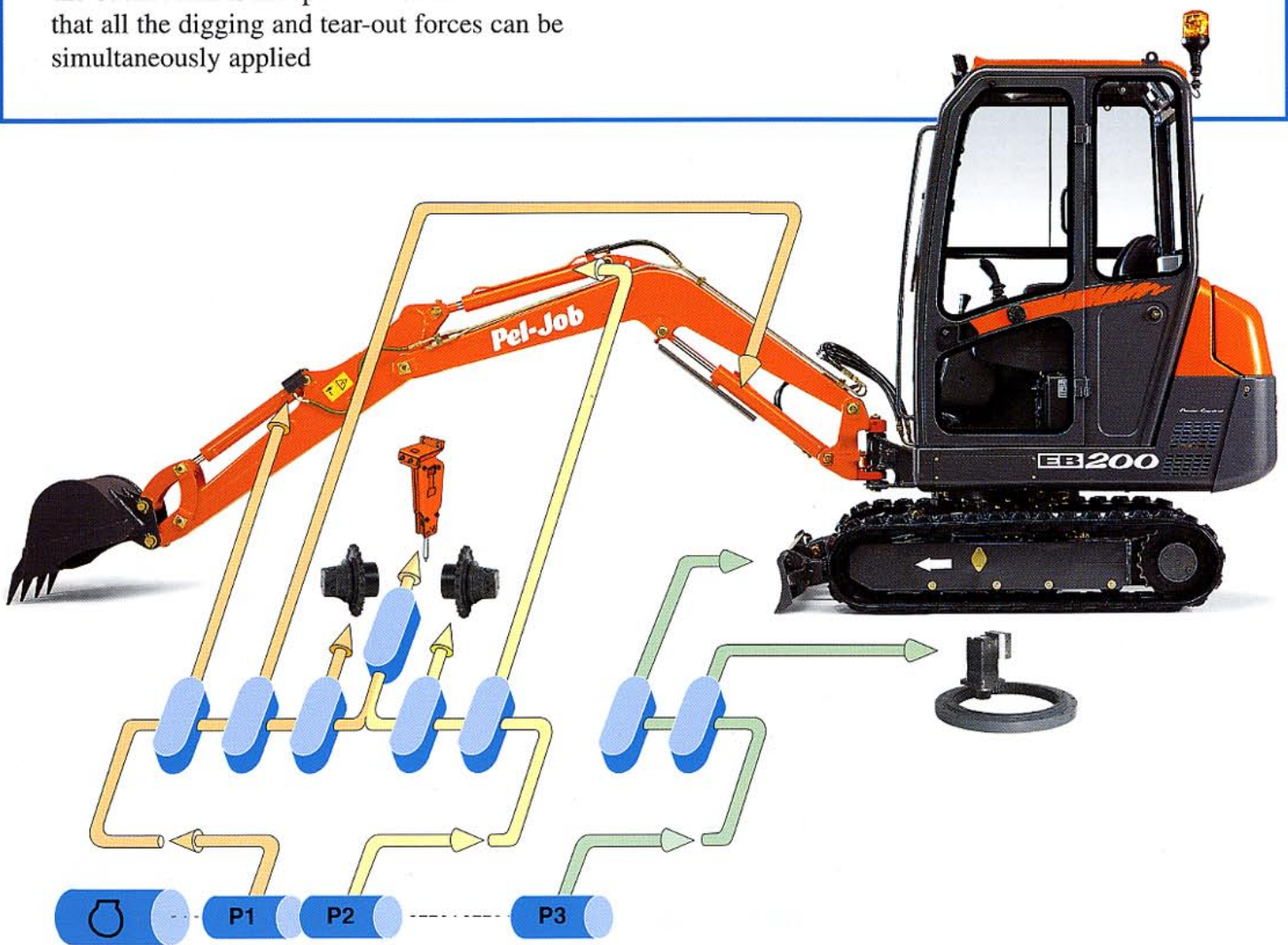
- fully protected working light on the boom
- easily removable flashing beacon on flexible mount to prevent breakage



# PEL-JOB HYDRAULIC SYSTEM: AT THE

The EB 150 and EB 200 are equipped with three independent hydraulic circuits for ensuring that each movement is fully simultaneous.

- slewing is independent of the boom and arm movements: raising or lowering the equipment does not slow down slewing during loading or descent to the maximum dig depot
- the arm ram is independent of the boom ram to ensure fast equipment raising (or lowering)
- the bucket ram is independent of the arm ram so that all the digging and tear-out forces can be simultaneously applied
- the blade is independent of the travelling circuits, even at high speed, to avoid slowing down forward motion when the blade is raised
- each travel motor (right and left) has its own independent pump for straight-line travel



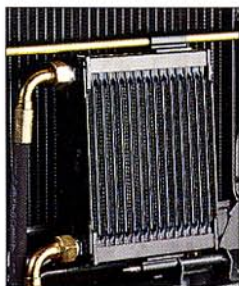
## Combining flow for the attachment circuit

- very high hydraulic breaker efficiency:
  - EB 150: 32 litres/minute
  - EB 200: 43 litres/minute

## Pump summary table

	EB 150	EB 200 Power Control
Pressure	170 bars	210 bars
Pump 1	fixed delivery	variable delivery
Pump 2	fixed delivery	variable delivery
Pump 3	fixed delivery	fixed delivery

# FOREFRONT OF TECHNOLOGY



All the EB 150 and EB 200 have a hydraulic oil cooler as a standard feature

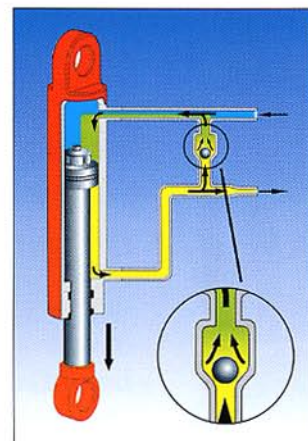
- fast stabilization of the hydraulic oil temperature
- no risk of overheating, even during intense and prolonged work
- work possible in hot atmosphere
- reduction of hydraulic loop capacity: less oil to replace

The distributor is equipped with a regeneration valve which recycles the expelled oil from the small section of the arm ram to the large section during downward movements

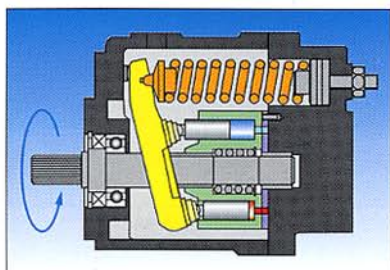
- energy recovery during arm lowering (driving load)
- time gain during descent to the pit bottom of the excavation
- the controls keep the same precision in all circumstances

## Power Control variable-delivery pump for EB 200

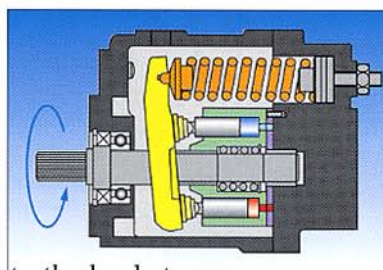
EB 200 is equipped with a Power Control variable-delivery twin pump which continuously fits the oil flow to the required force, to make the most of all the engine power.



Light digging: pressure is low. The plate tilts steeply and the flow is high. The equipment movements speed up: the full engine power is used.



Heavy force: the pressure is high (210 bars). The plate tilts slightly and the oil flow supplied by the pump is reduced. The equipment movements slow down, but the motor does not labour despite the very heavy forces imparted to the bucket.

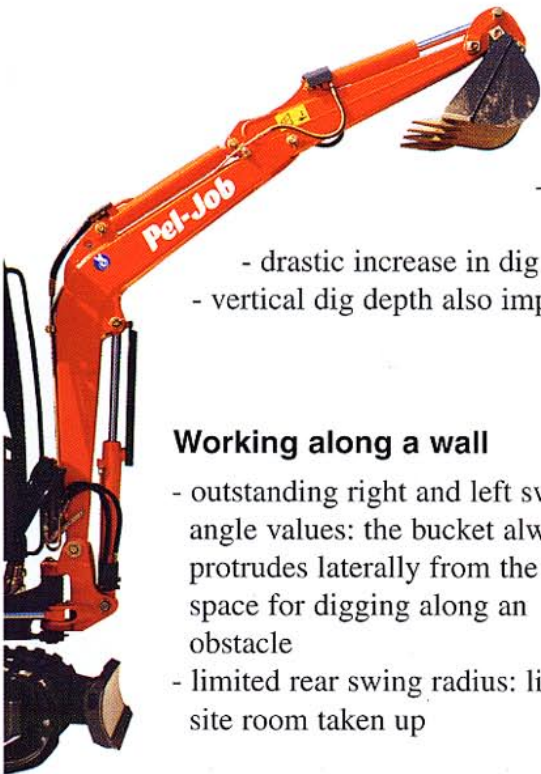


The new hydraulic distributors (new slide valves) bring even more precision and smoothness to the power-assisted controls



- high-precision excavation work close to pipelines
- high-quality finishing work
- safe handling operations

# THE DIFFERENCE ON THE SITE

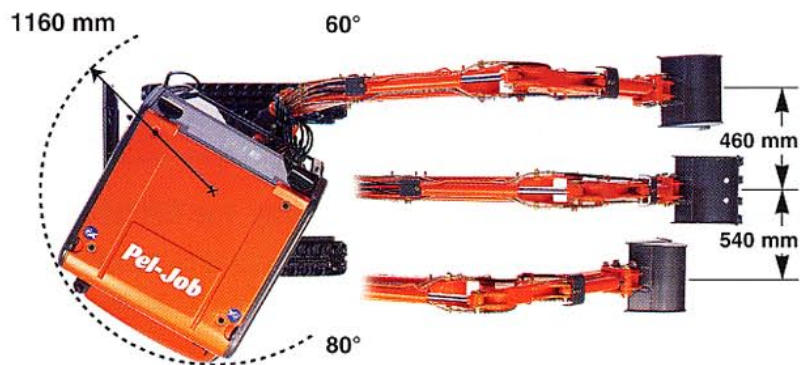


## Comfortably dimensioned boom swings

- very good dumping height: trucks can be directly loaded
- bucket still closed at max height: no loss of materials, max height is really useable
- boom swing identical in cab and canopy versions: no restriction on boom travel or swing angle in cab version
- drastic increase in dig depths (see page 4)
- vertical dig depth also improved to ease "square" finished pit bottoms

## Working along a wall



- outstanding right and left swing angle values: the bucket always protrudes laterally from the track space for digging along an obstacle
- limited rear swing radius: little site room taken up



## Fast travel

- two-speed travel as standard feature on XT and XTV versions
- max speeds : see chart



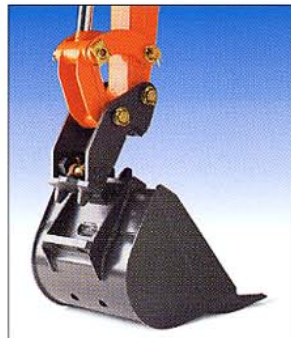
	EB 150 XT/XTV	EB 200 XT/XTV
	2,0 km/h	2,7 km/h
	3,5 km/h	4,7 km/h

## Levelling, travelling, backfilling...

- rounded blade profile: excellent dozing and continuous discharging of the earth or grass strip
- wear plate welded on the blade: ensures long blade life and keeps a constant angle of attack
- very high driving force: high-efficiency backfill work

## Pel-Job exclusive quick hitch

- immediate, tool-free accessory change
- time and safety gain
- reliable, easy-to-use system
- automatic play take-up

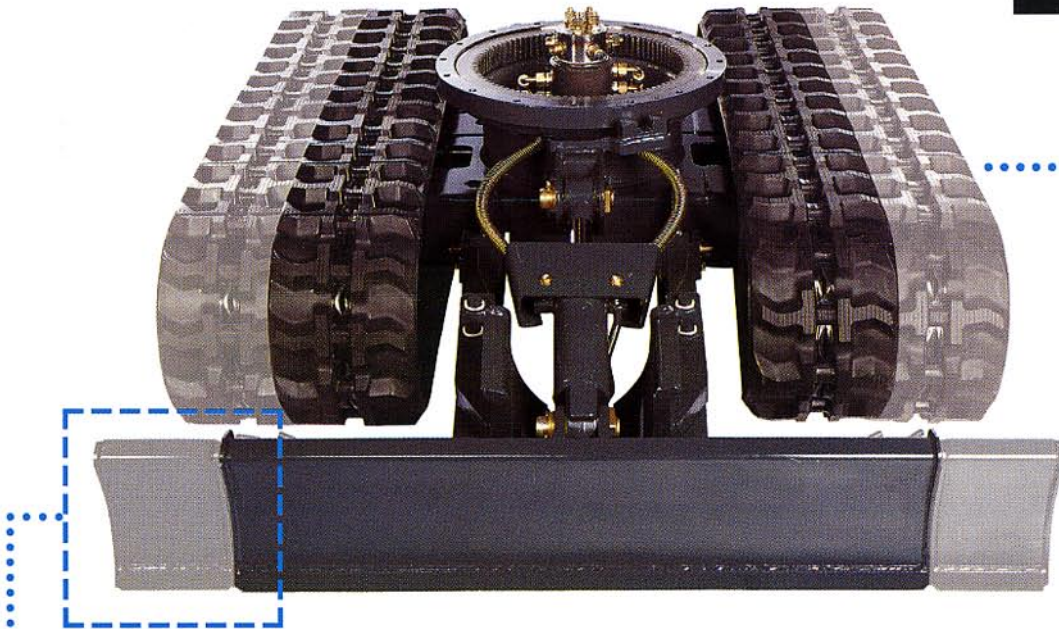


## Compatibility with all the Pel-Job accessories and buckets

- all the accessories of the EB 12.4 are mountable on EB 150
- all the accessories of the EB 16.4 are mountable on EB 200



# VARIABLE-WIDTH UNDERCARRIAGE



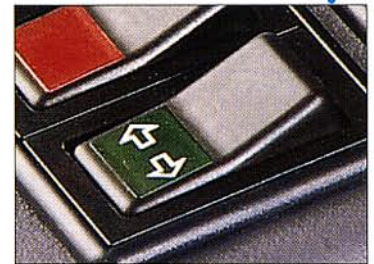
## Straightforward mounting of blade extensions

- tool-free mounting
- support for extensions on the blade arms

**XT** → **VARIABLE**

## Fully safe widening control:

- width variation is controlled by simultaneous action on the left-hand selector switch and on the right-hand blade lever
- operator error impossible: no risk of tipping on an incline or into a open excavation.



## Two machines in one:

### Narrow chassis

- less than one metre wide: access to the narrowest passageways (passage through gateways, alleyways, footbridges...)

### Wide chassis

- exceptional stability: greater safety
- increase in lateral load-bearing capacities
- the machine rests on a square base: exceptional stability when slewing
- capable of clearing a wide trench



EB 200 XTV

# A COMPACT MINI-EXCAVATOR HAS NEVER

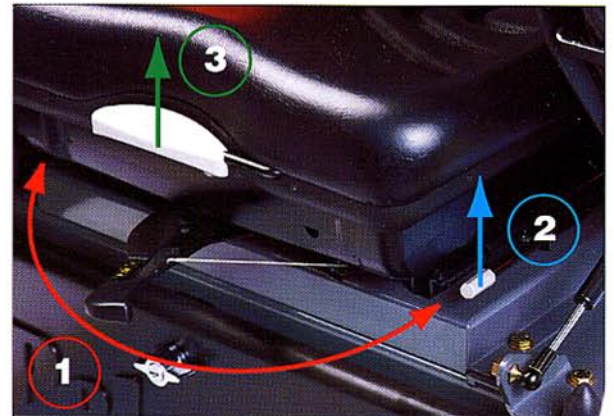
## A spacious, welcoming cab:

- appearance and overall presentation worthy of a larger mini-excavator
- roomy on the inside, particularly lengthwise: even tall drivers have enough leg-room
- flat, clear floor space: wide surface area for feet
- easy access thanks to the wide door and raisable console
- extensive glazed surfaces and plunging shape of the rear cover: excellent visibility right around the machine
- large sliding sidewindow: well ventilated
- very easy windscreen opening powered by gas-driven cylinders
- the windscreen is completely folded away under the roof in raised position
- the lower windscreen is easily removeable (only two attachment screws)
- floor nonskid profile: safety during mounting and dismounting



## New seat adjustable in all directions

- suspended seat identical for all versions (XR, XT, XTV, cab and canopy)
- 1: adjustable suspension to match driver weight
- 2: front/rear adjustment
- 3: adjustable back



## Complete radio pre-wiring as standard feature in all cabs (XR, XT, XTV)

- space for a radio
- space for two loudspeakers diameter 100 mm (standard grille)
- pre-fitted aerial
- complete on-the-spot wiring (power supply, aerial, loudspeakers)
- fast radio installation, without the need to remove any cab panelling



# BEEN SO COMFORTABLE



## A rugged, functional canopy

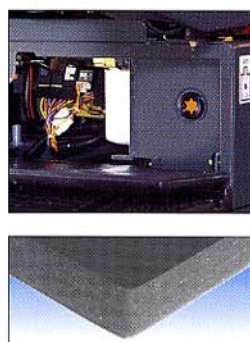


- access on both sides thanks to two raisable consoles
- full driver protection through the sheet metal roof and four uprights
- the driver can hold on to the front uprights and the crossbar when the mini-excavator works on an incline
- the roof overhang protects the driver from any falling objects
- strong, one-piece floor: no risk of losing the ground mat
- canopy quickly removed (four screws) for tunnelling work
- pre-designed to accommodate rear windscreen protection



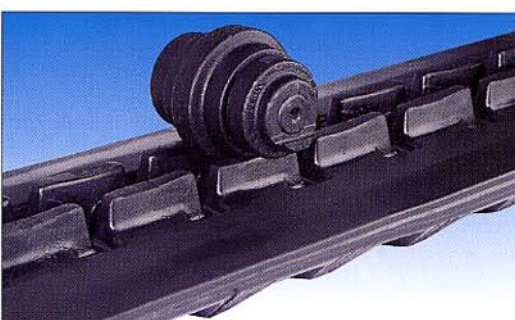
## High-performance heating and ventilation

- two-speed fan with outside air intake (can be used as an air vent in summer)
- large fan capacity (170 m<sup>3</sup> /hour and 320à kCal/hour): fast heating and demisting in winter
- heating temperature directly adjustable in the cab
- two directional air vents



## Efficient heat insulation

- twin cab roof protects from the sun (series comfort pack on XT and XTV versions)
- built-in hydraulic tank under the cover: no direct tank wall contact with the driver
- insulating foam between the cab and the engine



## New track profile (XT and XTV versions)

- enhanced ride comfort through the new tread profile
- alternating guide arrangement to ensure permanent contact between track and rollers: no vibration during travel
- central guidance by the roller pad: good de-tracking protection

# THE PLEASURE OF DRIVING A



## Pel-Job ergonomic arm-rests

- arm-rests right in line with the manipulators
- position raised 40 mm relative to EB 12.4: ideal forearm support
- large contact surface: extra comfort
- the rested forearm position allows high-precision control of the manipulators

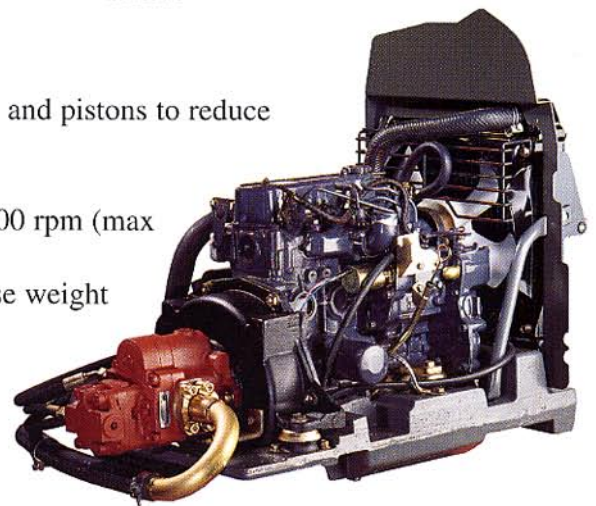


## New dashboard

- keeps the driver fully informed
- excellent visibility (non-reflecting glass)
- engine stops automatically in case of failure

## Highly advanced soundproofing

- new Mitsubishi L3E engine with modified combustion chambers and pistons to reduce sound level at source
- engine running limited to only 2200 rpm
- accelerator control intermediate position giving "eco" state at 1800 rpm (max torque state)
- engine/pump/radiator unit mounted on a cast steel bedplate whose weight absorbs most of the vibrations
- cab mounted on silent blocks
- reinforced cab soundproofing in XT and XTV versions: only 80 dB (A) for EB 150 XT





# PEL-JOB



## Power-assisted hydraulic controls

- smooth, high-flexibility controls for comfortable, accurate driving
- short, limited movement manipulators avoid wide driving actions: less fatigue
- boom right/left swing angle controlled directly by the manipulator: extra comfort for off set work (when the site is too narrow to slew the mini-excavator)
- new swing/slew changeover switch on the top of the left-hand manipulator: smoother and more reliable (same for right-hand horn)

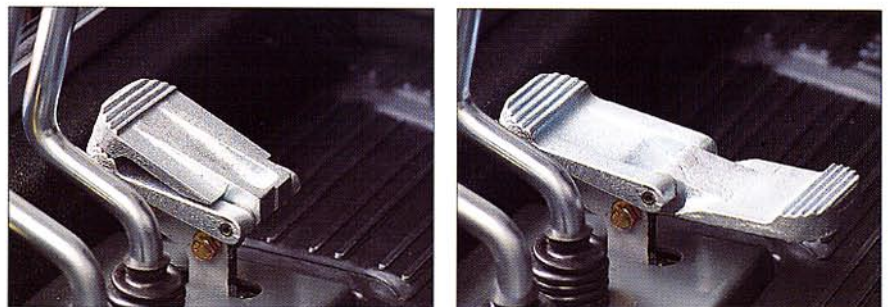
## Twin travel speed changeover control (versions XT and XTV)

- dual-position switch on left console (fast/slow speed selection)
- pushbutton on blade lever for easier driving during backfill operations: one hand kept on the travel controls, the other on the blade lever (slow-forward for more bucket force, fast-backward to gain time)



## Right control pedal

- hydraulic accessory control with the right foot: extra comfort
- better cab accessibility
- when not in use, the pedal folds away to free up floor space



## New system for locking the door open

- keeps the door locked open
- easily unlockable from outside or inside the cab, by pressing the knob next to the handle



# OUTSTANDING SAFETY STANDARDS



Canopy certified FOPS 1

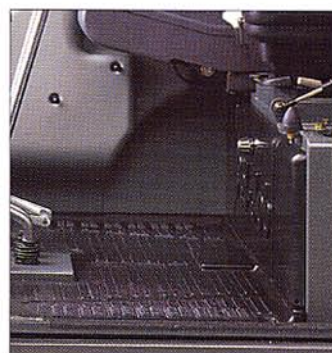


Cab certified FOPS 1 and TOPS

**FOPS 1 : Falling Object Protection Structure 1**  
**TOPS : Tip Over Protection Structure**



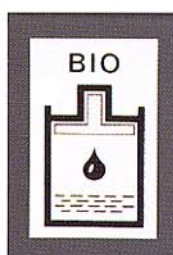
EB 150 and 200 comply with EU directives 89/392 and addenda, including a new safety feature which prevents engine startup if both consoles are lowered.



The nonskid floor boosts driver station safety during upward and downward travel.

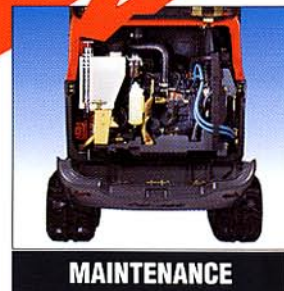


The cab is equipped as a standard feature with a safety belt (available as an option in the canopy versions), which protects the driver in case of tip-over.



Safety also means environment-friendliness: EB 150 and EB 200 are available as an option with biodegradable hydraulic oil and a catalytic exhaust pipe.

# CUTTING MAINTENANCE TIME



## Easy equipment monitoring

- all the boom and arm pins are fastened on the same side and exit on the left side
- hydraulic kit for the left-mounted breaker (the left side is the most visible during work)

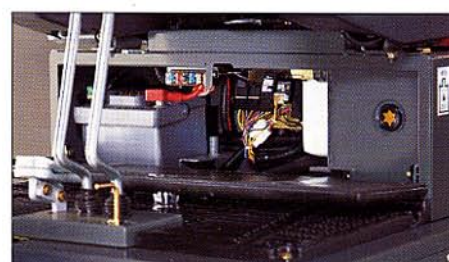
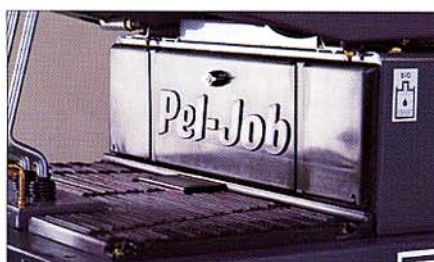


## Hoses mounted loose at the bottom of the boom

- no passage through the pivot: no friction or wear
- hose connected on the outside: top-speed replacement, with no need to follow the hose back to the distributor (the conduits inside the turret are made of metal tubes)

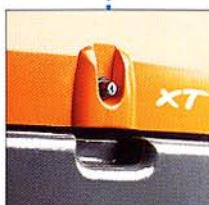
## Key-locked trap door

- fast access to fuses, battery and hydraulic filter
- sealed, maintenance-free battery
- tool box with space for user's manual



## Single key for all locks

- engine cover
- cab
- trap door



## Excellent accessibility to all components

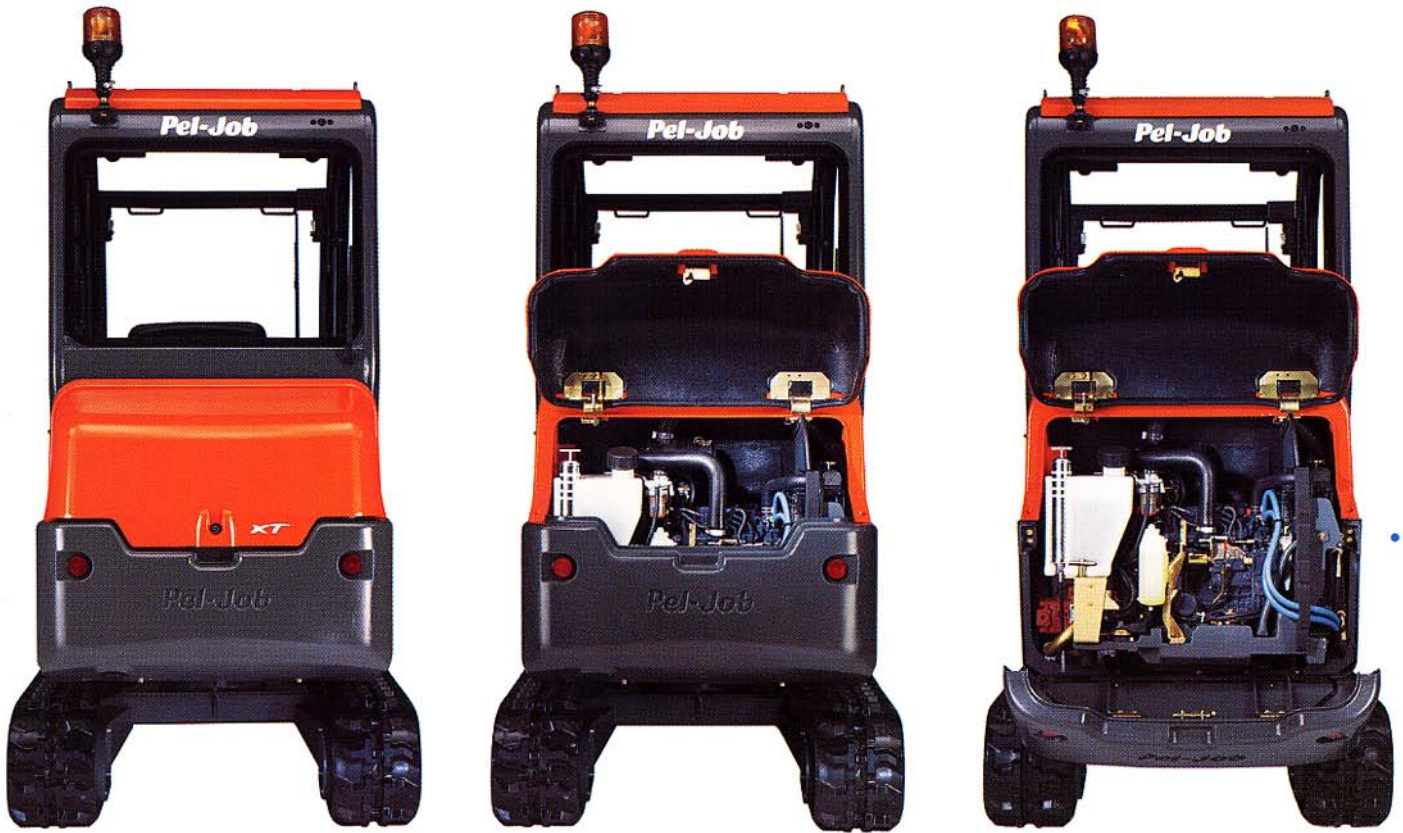
- only 6 screws in all for removing the floor and trap door
- direct access to the distributors, all the solenoids, the power unit and the slewing motor
- pressure taps directly on the distributors



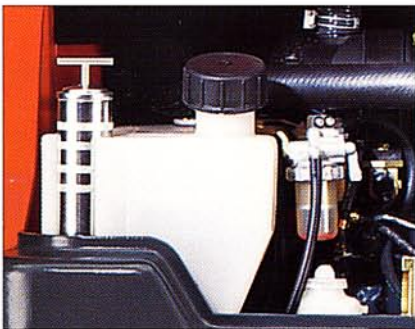
## Infrequent maintenance

operation (change/replacement)	frequency	
	EB 150 / 200	EB 12.4
hydraulic oil	1000 H	800 H
hydraulic filter	500 H	400 H
coolant	3000 H	400 H

# BETTER ACCESSIBILITY THAN YOU



By taking off the engine cover,  
the following functions can be accessed:

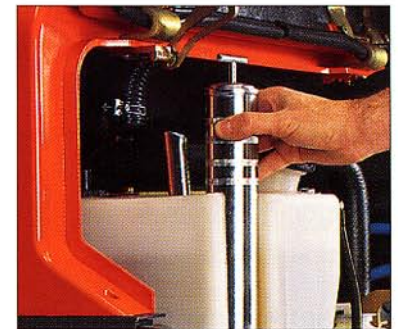


## Fuel

- transparent diesel oil tank: immediate level check without getting into the cab to turn on the ignition and look at the gauge, easy filling watch
- large-diameter, raised filling hole: easy filling, even with a jerrycan



Double diesel oil filtering:  
prefilter with transparent settling  
bowl to watch for condensation  
water, plus main filter.



Housing for grease gun in  
the tank: gun always to hand.

# HOPED FOR



The tilting counterweight, a Pel-Job exclusive, gives you the benefit of full engine accessibility

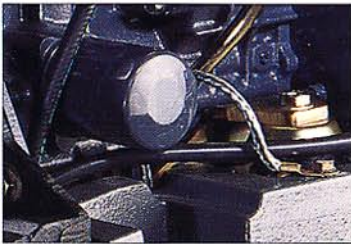


Extra fast swivelling of the engine sub-assembly (2 bolts to remove) to access the starter and alternator.

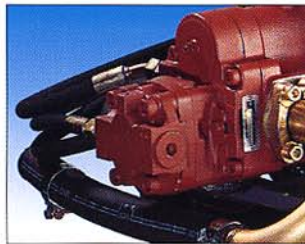


## Sliding oil cooler

Easy-to-clean inner face : enhanced cooling direct access to the engine oil filter for replacement.



Direct access to the engine oil filter.



Easy access to the hydraulic pumps.



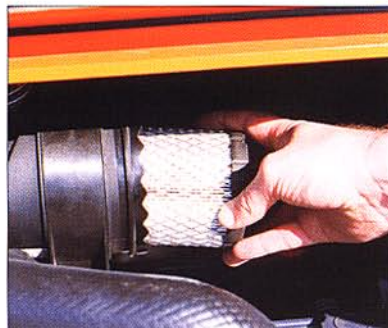
## Safe, easy-to-use mounting system

- only two screws and one safety bolt to release
- safe, easy closing by automatic relock



## Coolant

Transparent surge tank: visual level check.



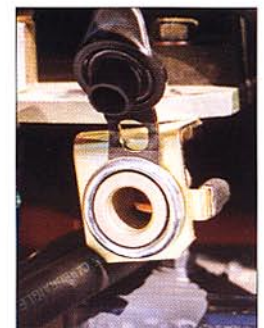
## Air filter

Fast, tool-free check and cleaning.



## Engine oil level

Gauge accessible from the top.



## Lighting

Socket for connecting a flashlight to the engine.

# EB 150

MODELS :	EB 150 XR	EB 150 XT	EB 150 XTV
----------	-----------	-----------	------------

Operational weight with rubber tracks			
Canopy version	1435 kg	1485 kg	1605 kg
Cab version	1565 kg	1615 kg	1735 kg
Ground pressure	0,30 kg/cm <sup>2</sup>	0,30 kg/cm <sup>2</sup>	0,32 kg/cm <sup>2</sup>

Bucket performances	
Excavation force	1510 daN
Tear-out force	960 daN

Buckets	
Standard bucket	400 mm (33 litres)
Other backhoe buckets available	from 200 to 600 mm (from 14 to 53 litres)
Cleaning buckets	from 850 to 1000 mm (from 52 to 60 litres)

Water-cooled 3-cylinder diesel engine	
Type	Mitsubishi L3E
Cubic capacity	952 cc
Rated horsepower (DIN 6270 B)	19.0 hp (14.0 kW) at 2800 rpm
Installed horsepower (DIN 6270B)	15.5 hp (11.3 kW) at 2200 rpm
Maximum torque	540 Nm at 1850 rpm
Battery	12 V - 45 AH
Fuel tank capacity	21 litres
Maximum slope and bank	30° / 58 % (engine's lubrication limit)

Hydraulic system with 3 independent circuits	
Controls	power-assisted hydraulic controls
Pumps	Triple gear pump
Delivery	16 + 16 + 11 litres/min.
Equipment and travel pressure	170 bar
Blade and slewing pressure	165 bar
Delivery of attachment circuit	32 litres/min.
Total capacity of circuit	23 litres

Lower chassis			
Type	Fixed	Fixed	Variable
Tractive force	1260 daN	1440 daN	1440 daN
Travel speed	2,0 km/h	2,0 - 3,5 km/h	2,0 - 3,5 km/h
Slewing motor	Orbitrol with direct drive without reduction unit		
Slewing speed	9 rpm		

Sound level (dynamic measurement)			
Sound level exterior (LwA)	95 dB(A)	93 dB(A)	93 dB(A)
Sound level in the cab (LpA)	81 dB(A)	80 dB(A)	80 dB(A)
Sound level under the canopy (LpA)	81 dB(A)	80 dB(A)	80 dB(A)

4-post canopy			
FOPS 1 protection	●	●	●
Adjustable suspended seat	●	●	●
Lighting	1 working light		

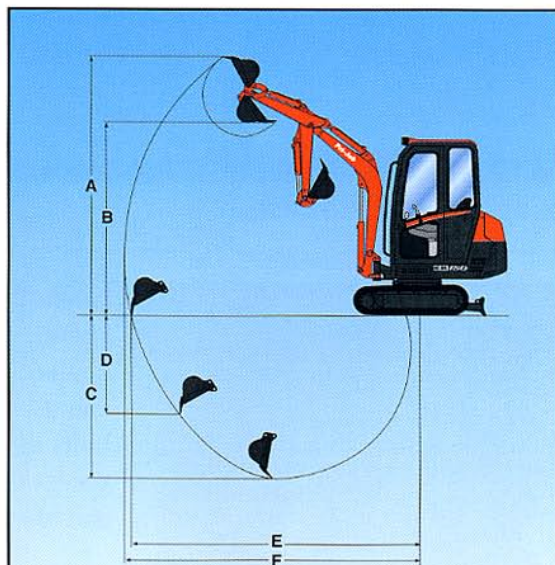
Cab heating and ventilation			
FOPS 1 and TOPS protection	●	●	●
Adjustable suspended seat	●	●	●
Pre-equipment radio	●	●	●
Lighting	2 working lights		
"Confort" pack*	○	●	●

● : standard equipment - ○ : optional equipment - \* "Confort" pack : insulating double cab roof and glove box behind seat.

#### Other options and accessories available :

Steel tracks (+60 kg)	Organic hydraulic oil	Special paint	Safety valve for handling
Double-acting hydraulic kit	Catalytic exhaust	Revolving light	Working light on boom
Mechanical quick release coupling	Rear working light		

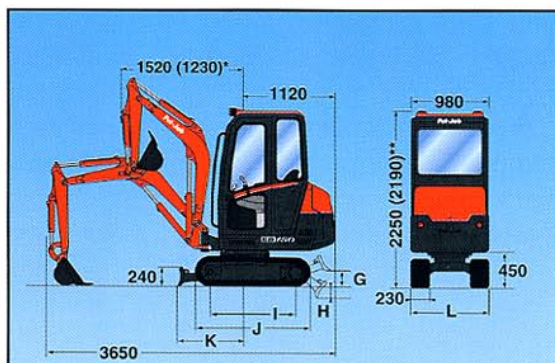
Refer also to the Pel-Job buckets and accessories catalogue.



Arm	A	B	C*	C	D	E	F
900 mm	3410	2480	2200	2050	1500	3610	3710
1150 mm	3550	2620	2450	2300	1740	3850	3940
Telescopic	3740	2710	2520	2380	1950	3980	4070

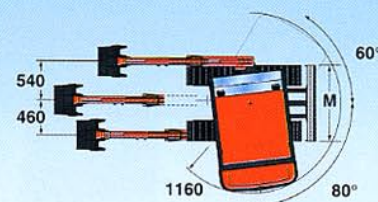
\* Dig depth with blade down

(mm)



\* Front turning circle with max. offset

\*\* Canopy



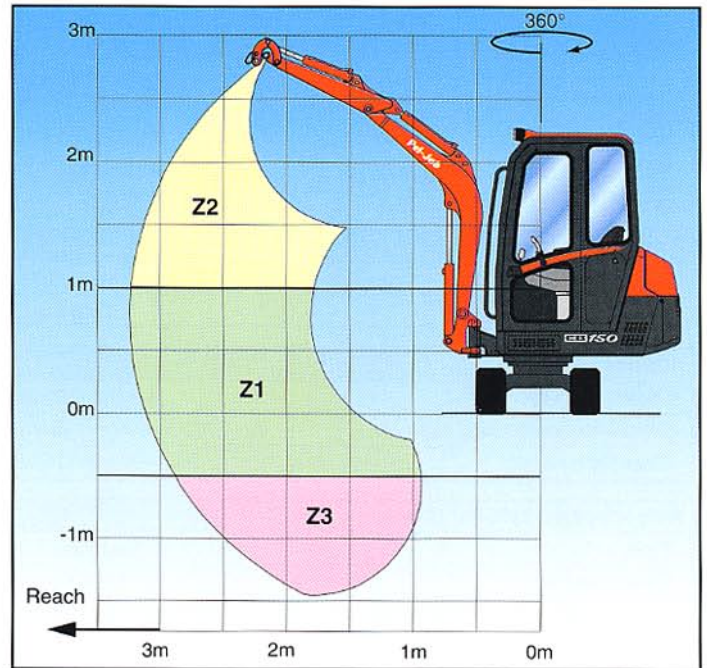
	G	H	I	J	K	L	M
EB 150 XR	210	150	1045	1415	790	980	980
EB 150 XT	210	150	1085	1470	790	980	980
EB 150 XTV	210	230	1085	1470	945	980-1330	980-1350

(mm)







# LIFTING PERFORMANCES IN FULL ROTATION

These values are indicated for a machine with rubber tracks and without a bucket and a quick coupling, for a load handled on a 360° full rotation.






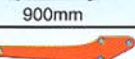
The lifting capacities represent 75% of the tipping load or 87% of the hydraulic limit. (ISO 10567).



## EB 150 XR




		REACH	1.00 m	1.50 m	2.00 m	2.50 m	3.00 m	maxi : 3.40 m
CABIN 	900mm 	Z2			275	205	160	
		Z1	745°	385	260	195	155	
		Z3	745°	395	260	195		
	1150mm 	Z2			280	190*	160	
		Z1	610°	385	260	195	155	130
		Z3	610°	385	260	195	155	
CANOPY 	900mm 	Z2			325*	240	185	
		Z1	745°	440	295	220	175	
		Z3	745°	445	300	225		
	1150mm 	Z2			320	190*	180	
		Z1	610°	435	295	220	175	150
		Z3	610°	440	295	220	175	

## EB 150 XT

		REACH	1.00 m	1.50 m	2.00 m	2.50 m	3.00 m	maxi : 3.40 m
CABIN 	900mm 	Z2			285	210	165	
		Z1	745°	405	270	205	160	
		Z3	745°	410	275	205		
	1150mm 	Z2			290	190*	165	
		Z1	610°	400	270	200	160	135
		Z3	610°	405	270	200	160	
CANOPY 	900mm 	Z2			325*	250*	200	
		Z1	745°	485	325	245	195	
		Z3	745°	495	330	245		
	1150mm 	Z2			350	190*	200	
		Z1	610°	485	325	245	195	165
		Z3	610°	485	325	245	195	

## EB 150 XT V

With maximum width on undercarriage (width : 1.33m)

		REACH	1.00 m	1.50 m	2.00 m	2.50 m	3.00 m	maxi : 3.40 m
CABIN 	900mm 	Z2			330*	250*	210	
		Z1	760°	530	350	260	205	
		Z3	760°	535	350	260		
	1150mm 	Z2			385*	190*	210	
		Z1	610°	525	350	260	205	175
		Z3	610°	530	350	260	205	
CANOPY 	900mm 	Z2			330*	250*	235	
		Z1	760°	595	395	295	230	
		Z3	760°	605	395	295		
	1150mm 	Z2			385*	190*	230*	
		Z1	610°	590	385*	290	230	210
		Z3	610°	595	395	290	230	

\* : hydraulic limit

# EB 200

<b>MODELS :</b>	<b>EB 200 XT</b>	<b>EB 200 XTV</b>
-----------------	------------------	-------------------

<b>Operational weight with rubber tracks</b>		
Canopy version	1650 kg	1745 kg
Cab version	1780 kg	1875 kg
Ground pressure	0,26 kg/cm <sup>2</sup>	0,28 kg/cm <sup>2</sup>

<b>Bucket performances</b>	
Excavation force	1850 daN
Tear-out force	1250 daN

<b>Buckets</b>	
Standard bucket	500 mm (62 litres)
Other backhoe buckets available	from 225 to 600 mm (from 28 to 77 litres)
Cleaning buckets	1000 mm (117 litres)

<b>Water-cooled 3-cylinder diesel engine</b>	
Type	Mitsubishi L3E
Cubic capacity	952 cc
Rated horsepower (DIN 6270 B)	19.0 hp (14.0 kW) at 2800 rpm
Installed horsepower (DIN 6270B)	15.5 hp (11.3 kW) at 2200 rpm
Maximum torque	540 Nm at 1850 rpm
Battery	12 V - 45 AH
Fuel tank capacity	21 litres
Maximum slope and bank	30° / 58 % (engine's lubrication limit)

<b>Hydraulic system with 3 independent circuits</b>	
Controls	power-assisted hydraulic controls
Pumps	triple, variable capacity Power Control pump
Delivery	21.5 + 21.5 + 14 litres/min.
Equipment and travel pressure	210 bar
Blade and slewing pressure	190 bar
Delivery of attachment circuit	43 litres/min.
Total capacity of circuit	23 litres

<b>Lower chassis</b>		
Type	Fixed	Variable
Tractive force	1770 daN	1770 daN
Travel speed	2,7 - 4,7 km/h	2,7 - 4,7 km/h
Slewing motor	Orbitrol with direct drive without reduction unit	
Slewing speed	10 rpm	

<b>Sound level (dynamic measurement)</b>	
Sound level exterior (LwA)	93 dB(A)
Sound level in the cab (LpA)	83 dB(A)
Sound level under the canopy (LpA)	81 dB(A)

<b>4-post canopy</b>		
FOPS 1 protection	●	●
Adjustable suspended seat	●	●
Lighting	1 working light	

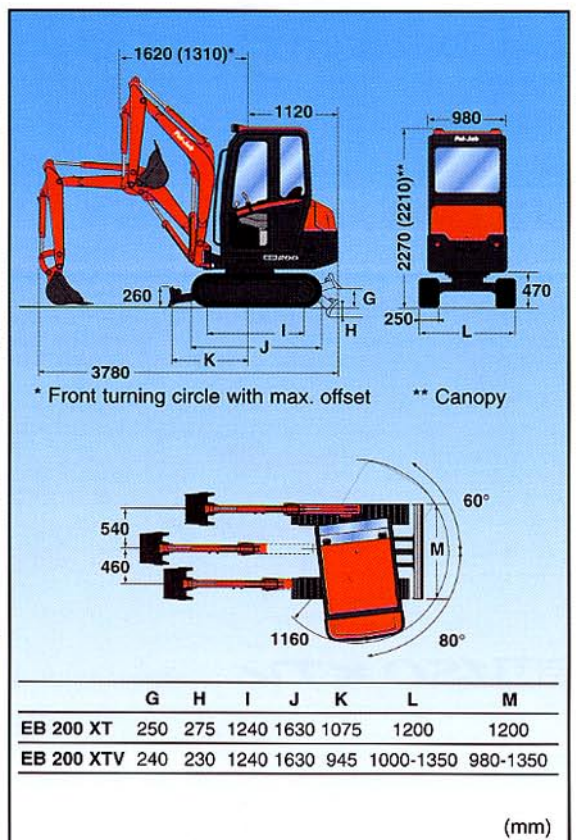
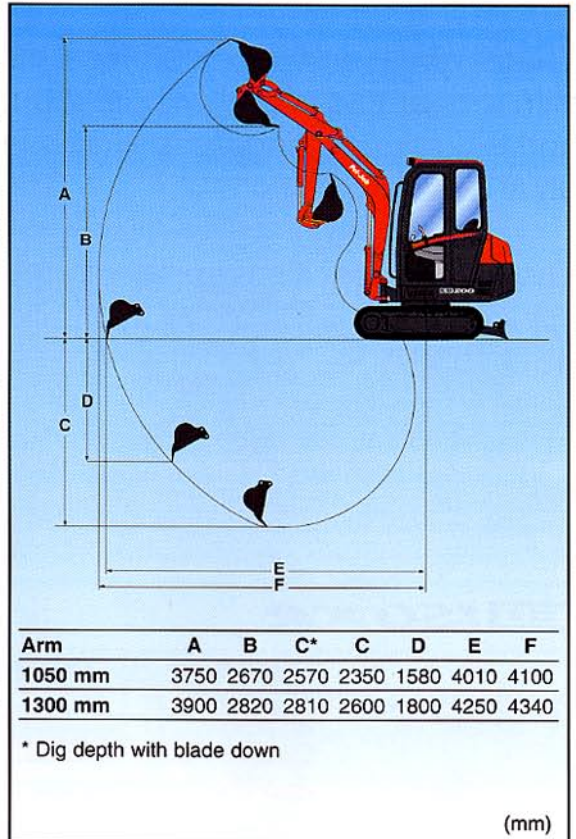
<b>Cab heating and ventilation</b>		
FOPS 1 and TOPS protection	●	●
Adjustable suspended seat	●	●
Pre-equipment radio	●	●
Lighting	2 working lights	
"Comfort" pack*	●	●

● : standard equipment - \* "Comfort" pack : insulating double cab roof and glove box behind seat.

### Other options and accessories available :

Steel tracks (+60 kg)	Organic hydraulic oil	Special paint	Safety valve for handling
Double-acting hydraulic kit	Catalytic exhaust	Revolving light	Working light on boom
Mechanical quick release coupling	Rear working light		

Refer also to the Pel-Job buckets and accessories catalogue.

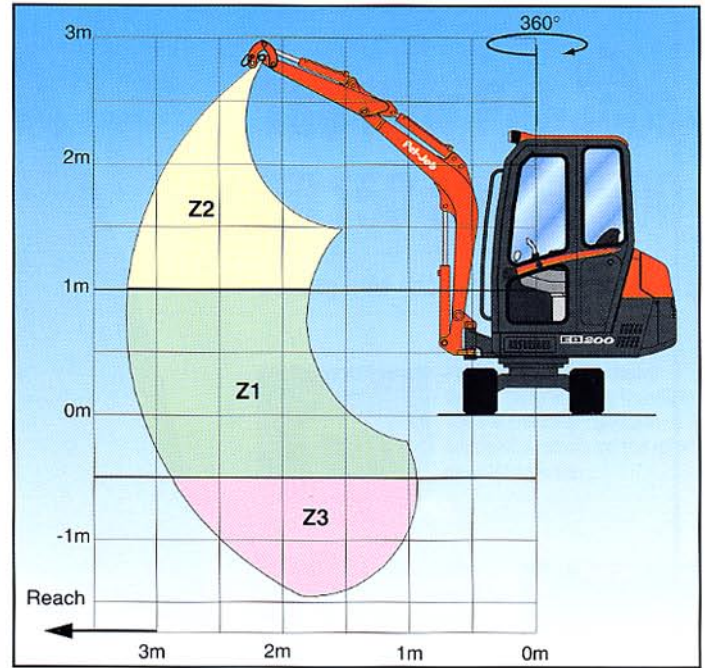








# LIFTING PERFORMANCES IN FULL ROTATION

These values are indicated for a machine with rubber tracks and without a bucket and a quick coupling, for a load handled on a 360° full rotation.

The lifting capacities represent 75% of the tipping load or 87% of the hydraulic limit. (ISO 10567).









## EB 200 XT

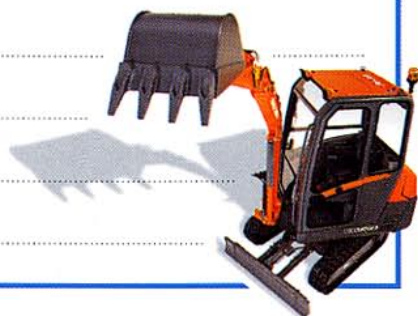
		REACH	1.00 m	1.50 m	2.00 m	2.50 m	3.00 m	3.50 m	maxi : 3.70 m
<b>CABIN</b> 	 1050mm	Z2			395	285*	220		
		Z1	895*	580	375	275	215	175	
		Z3	895*	600	385	280			
	 1300mm	Z2			420	305	235	185	
		Z1	755*	600	390	285	220	180	170
		Z3	755*	615	395	285	225		
<b>CANOPY</b> 	 1050mm	Z2			440*	285*	260		
		Z1	895*	675	440	325	255	210	
		Z3	895*	695	450	330			
	 1300mm	Z2			470	320*	265*	210	
		Z1	755*	670	435	320	250	205	190
		Z3	755*	685	440	320	250		

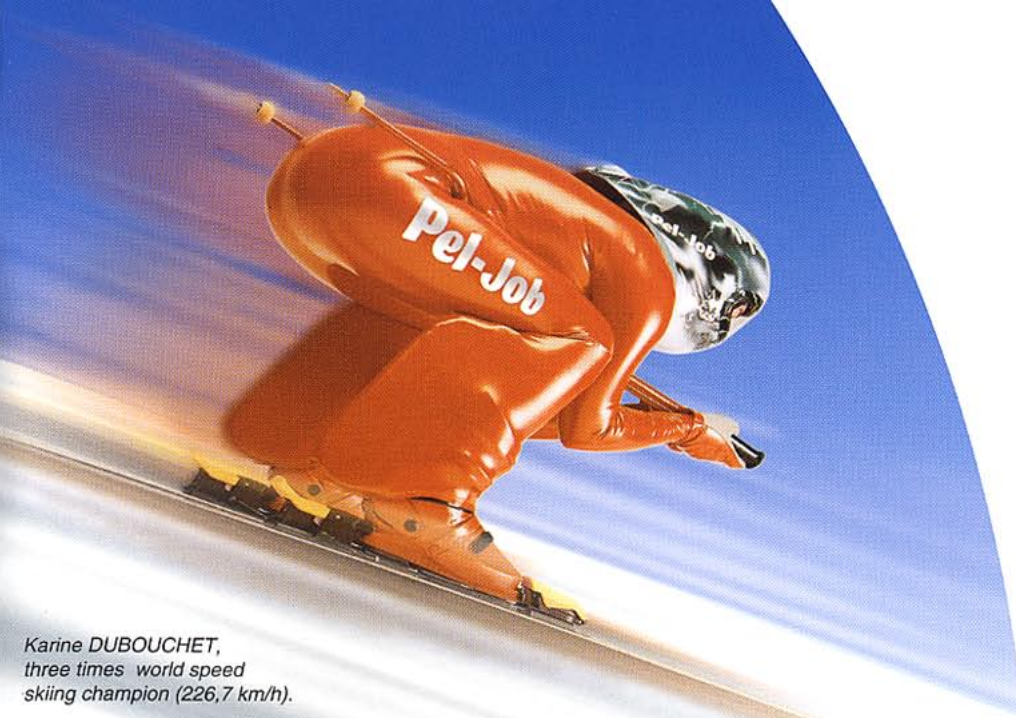
## EB 200 XT V

With maximum width on undercarriage (width : 1.35m)

		REACH	1.00 m	1.50 m	2.00 m	2.50 m	3.00 m	3.50 m	maxi : 3.70 m
<b>CABIN</b> 	 1050mm	Z2			440*	285*	290		
		Z1	895*	765*	495	360	280	230	
		Z3	895*	805	505	365			
	 1300mm	Z2			530*	320*	265*	230	
		Z1	755*	795*	495	355	275	225	210
		Z3	755*	795	500	360	280		
<b>CANOPY</b> 	 1050mm	Z2			440*	285*	325*	270	
		Z1	895*	765*	575	420	325		
		Z3	895*	925	585	425			
	 1300mm	Z2			530*	320*	265*	265	
		Z1	755*	795*	570	415	320	260	245
		Z3	755*	915	575	415	325		

\* : hydraulic limit





Karine DUBOUCHET,  
three times world speed  
skiing champion (226,7 km/h).

## Champions of all categories



# The New Pel-Jobs EB 150 and EB 200

Setting new records in every respect :



**Performance :** Impressive bucket force and two travelling speeds ensuring rapid and successful results on the most demanding sites.

**Versatility :** A new variable frame enabling the operator to choose at any time between the agility of an excavator less than 1 metre wide and the stability afforded by an extra-wide frame.



**Comfort :** A spacious and silent operator cabin, with servo-assisted precise controls for greater comfort and safety.

**Innovation :** An all-round counterweight that tilts instantly to give full access to the engine and simplify all maintenance work.



The new Pel-Jobs EB 150 and EB 200 : a complete range of five compact 1.5 to 2.0 tonne excavators.



Model displayed : the EB 200 XTV.

*The difference on the site.*

# Pel-Job



**Pel-Job** 

Ecomat industrie SA, BP 119, 01303 Belley, France  
Tél. +33 (0) 4 79 81 15 09, Fax +33 (0) 4 79 81 39 63