









# Material Handling Equipment



ÅKERMAN EW230B, EC230B, EC300, EC420, EC620





- **Operating Weights:**  
*EW230B – 19,5 t*  
*EC230B – 21,1 t*  
*EC300 – 30,2 t*  
*EC420 – 41,5 t*  
*EC620 – 57,4 t*
- *Direct injection, turbocharged Volvo diesel engine*
- *Åkerman three-circuit hydraulic system*
- *Comfort cab*
  - *computerized control and warning system*
  - *ergonomic environment*
  - *low sound level*
  - *filtered air*
- *Permanent 4-wheel drive. Four travel speeds - max. 30 km/h (EW230B)*
- *Four outriggers. (EW230B)*

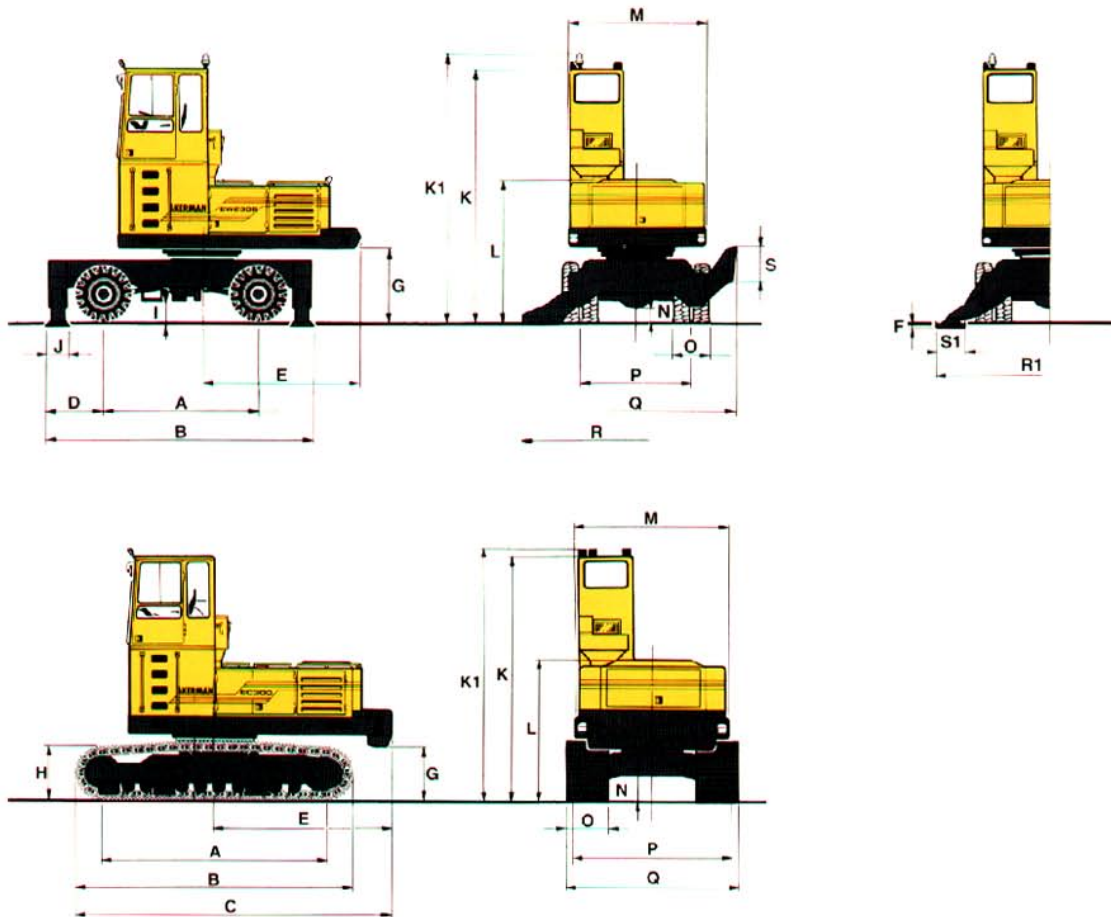
**ÅKERMAN**

ENGINE		EW230B	EC230B	EC300	EC420	EC620
	VOLVO engine ..... Model The engines are turbocharged, 4-stroke diesel engines with water cooling and direct injection.	TD61GE	TD61GE	TD71GE	TD101GE	TD121KG
Net output at .....	r/min	2100	2100	2000	1700	1800
ISO 3046 / DIN 6271* .....	kW (hp)	122 (166)	122 (166)	154 (209)	192 (262)	284 (386)
Cylinder diameter .....	mm	98,43	98,43	104,77	120,65	130,17
Piston stroke .....	mm	120	120	130	140	150
Stroke volume .....	dm <sup>3</sup>	5,48	5,48	6,73	9,60	11,98
The engines are equipped with electric starter elements to facilitate starting in cold weather.						
* Fan excluded						
ELECTRIC SYSTEM						
	A.C. Generator .....	V/A	28/55	28/55	28/45	28/45
	Battery .....	qty. (V)	4 (12)	4 (12)	4 (12)	2 (12)
	Battery capacity .....	Ah	2 x 60	2 x 60	2 x 60	170
UNDERCARRIAGE						
	<b>Travel - Tracks</b> Each track is powered by an axial piston hydraulic motor. The track brakes are of multiple-plate type and are activated by spring power and hydraulically released.					
Max. tractive effort .....	kN		222	297	372	480
Max. travel speed .....	km/h		5,1	2,8	3,7	2,3
Number of track shoes each side .....	qty.		50	53	49	53
Standard track width .....	mm		600	700	700	800
Rollers each side .....	bottom (top)		9 (2)	10 (2)	9 (2)	10 (2)
	<b>Travel - Wheels</b> One big variable piston motor mounted on a two step gearbox powers front and rear axle with hub reductions.					
Max. tractive effort .....	kN	148				
Travel speed, high speed .....	km/h	0 - 30				
Travel speed, low speed .....	km/h	0 - 8				
Twin wheels (std) .....		10.00-20PR16				
SLEWING SYSTEM						
	The superstructure is slewed by an axial piston motor. Cab lock, slew gearbox and slew drive shaft are geared between the slew motor and the inner tooth race of the slew ring. Slewing ring runs in sealed oil bath.					
Slew, start to stop*						
90° turn .....	s	6,2	6,2	4,8	5,5	7,2
180° turn .....	s	8,2	8,2	7,1	7,5	10,2
SERVICE REFILL CAPACITIES						
	Fuel tank .....	l	340	340	340	770
	Fuel pump capacity .....	l/min	90	90	90	90
	Hydraulic system, total .....	l	400	400	430	840
	Diesel engine .....	l	22	22	25	38
	Cooling system (incl. glycol) .....	l	32	32	48	60

<b>CAB</b>		<b>EW230B</b>	<b>EC230B</b>	<b>EC300</b>	<b>EC420</b>	<b>EC620</b>
 <p>Operator's cab with a supporting frame structure. Large panes for all round good visibility. The upper front pane can be pushed up in the ceiling, and the lower one can be removed. Sliding window in the cab door.</p> <p><b>Heater and defroster:</b> Pressurised and filtered cab. A 3-speed fan provides efficient heating and defrosting through 14 outlets. Prepared for Air Conditioning.</p> <p><b>Operator's seat:</b> Adjustable suspension operator's seat with headrest and individually adjustable armrests and hand controls.</p> <p><b>Sound level:</b> Approved according to 86/662/EEC.</p>						
Surroundings (ISO 6393)						
(10 m distance from the machine)						
Average value $L_{WA}$ (acoustic power) ..... dB (A)		108	108	108	107	110
Inside the cab (ISO 6394)						
with the door closed						
$L_{pA}$ (acoustic pressure) ..... dB (A)		76	77	75	75	78
<b>HYDRAULIC SYSTEM</b>						
 <p><b>Åkerman 3-circuit system all servo controlled.</b></p> <p><b>Pumps:</b> P1 is a pressure controlled variable pump with priority to slew circuit. P2 and P3 are power and pressure controlled variable pumps with opposite cross flow priority to boom, bucket and arm.</p> <p><b>Mode selector:</b> EC/EW230B – EC420 have three working modes and EC620 has two:  <b>HLD</b> = Heavy Lift Device  <b>ECO</b> = Economy  <b>CAP</b> = Capacity  Powerboost temporarily selectable 10 sec. even in Economy and Capacity mode.</p> <p><b>Valve system:</b> Boom, arm and bucket are operated by dual main valves to obtain best combination of precision manoeuvrability and minimised fuel consumption. Boom cylinder equipped with floating position valve for improved comfort and increased digging speed. Security hose rupture valve on the boom cylinder.</p>						
Pump P1						
Max. pressure .....		26	26	26	25	29
Max. flow .....		88	88	110	151	180
Pumps P2 and P3						
Max. pressure .....		28	28	26	26	30
Power boost .....		32	32	30	30	-
Max. flow .....		2 x 142	2 x 142	2 x 170	2 x 245	2 x 180/173
Servo pump						
Pressure .....		6,5	6,5	6,5	6,5	6,5
Flow .....		28	19,5	18,5	15,5	27
Steering pump						
Pressure .....		14	-	-	-	-
Flow .....		34	-	-	-	-

WEIGHTS		EW230B	EC230B	EC300	EC420	EC620
	Base machine incl. counterweight..... kg	17 000	18 600	26 000	35 700	48 400
	Counterweight..... kg	3 000	3 500	5 000	7 800	10 600
	Compl. weight of equipment..... kg	2 500 2 750*	2 500 2 750*	4 180	5 830	9 000
	<b>Total weight excl. gen. set and lifting device ..... tonnes</b>	<b>19,5 - 19,8</b>	<b>21,1 - 21,4</b>	<b>30,2</b>	<b>41,5</b>	<b>57,4</b>
EQUIPMENT						
	Sealed spheric hardened steel link bearings. Hose rupture valve standard on boom lowering motion.					
	Boom length..... m	6,0 6,75*	6,0 6,75*	7,4	8,6 7,0*	10,3
	Dipper arm length..... m	4,4 5,15*	4,4 5,15*	5,5	6,5 4,37*	8,1
	Jib length..... m				3,25*	
	* = Optional					

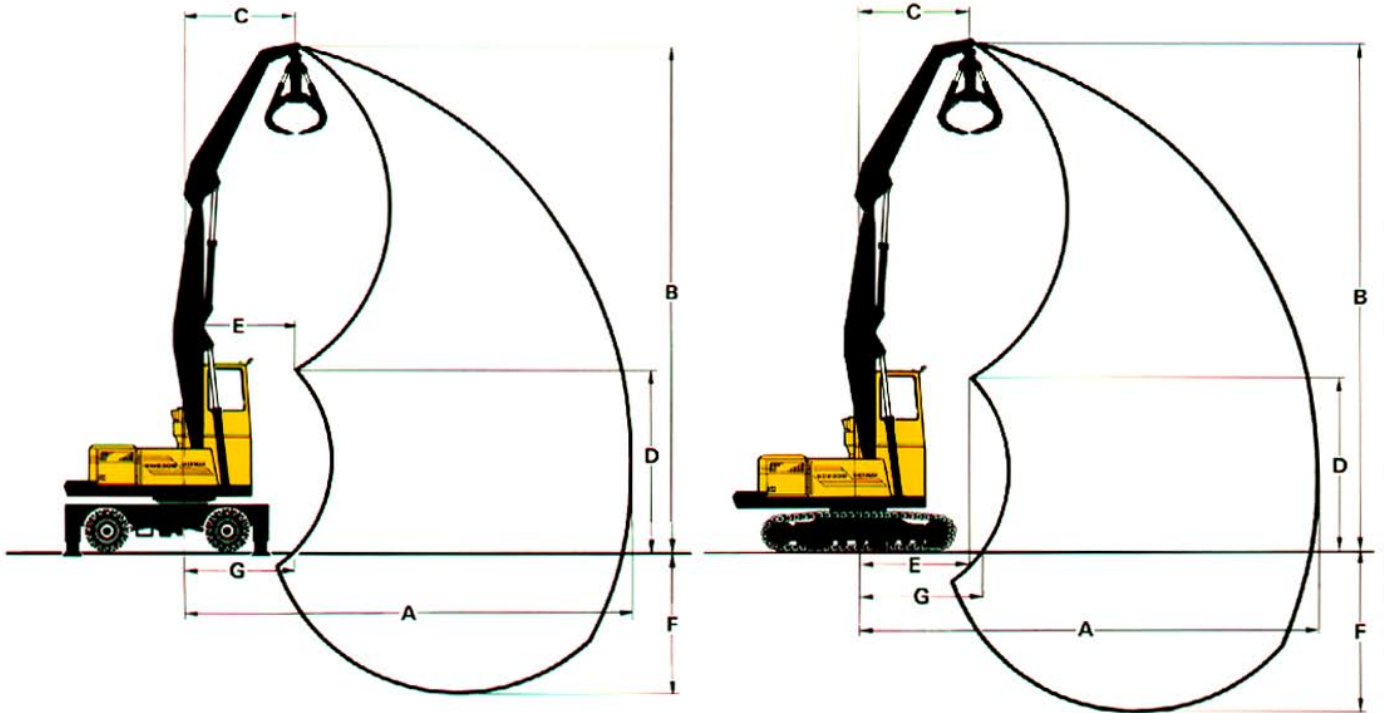
### DIMENSIONS



	EW230B	EC230B	EC300	EC420	EC620
A	2,78 m	3,73 m	4,21 m	4,05 m	4,63 m
B	4,98 m	4,54 m	5,13 m	5,07 m	5,78 m
C	-	5,14 m	5,72 m	6,16 m	7,11 m
D	1,16 m	-	-	-	-
E	2,87 m	2,87 m	3,16 m	3,62 m	4,22 m
F	0,11 m	-	-	-	-
G	1,28 m	1,03 m	0,97 m	1,08 m	1,42 m
H	-	0,81 m	0,94 m	1,02 m	1,15 m
I	0,44 m	-	-	-	-
J	0,45 m	-	-	-	-
K	4,48 m	4,23 m	4,39 m	4,57 m	4,78 m

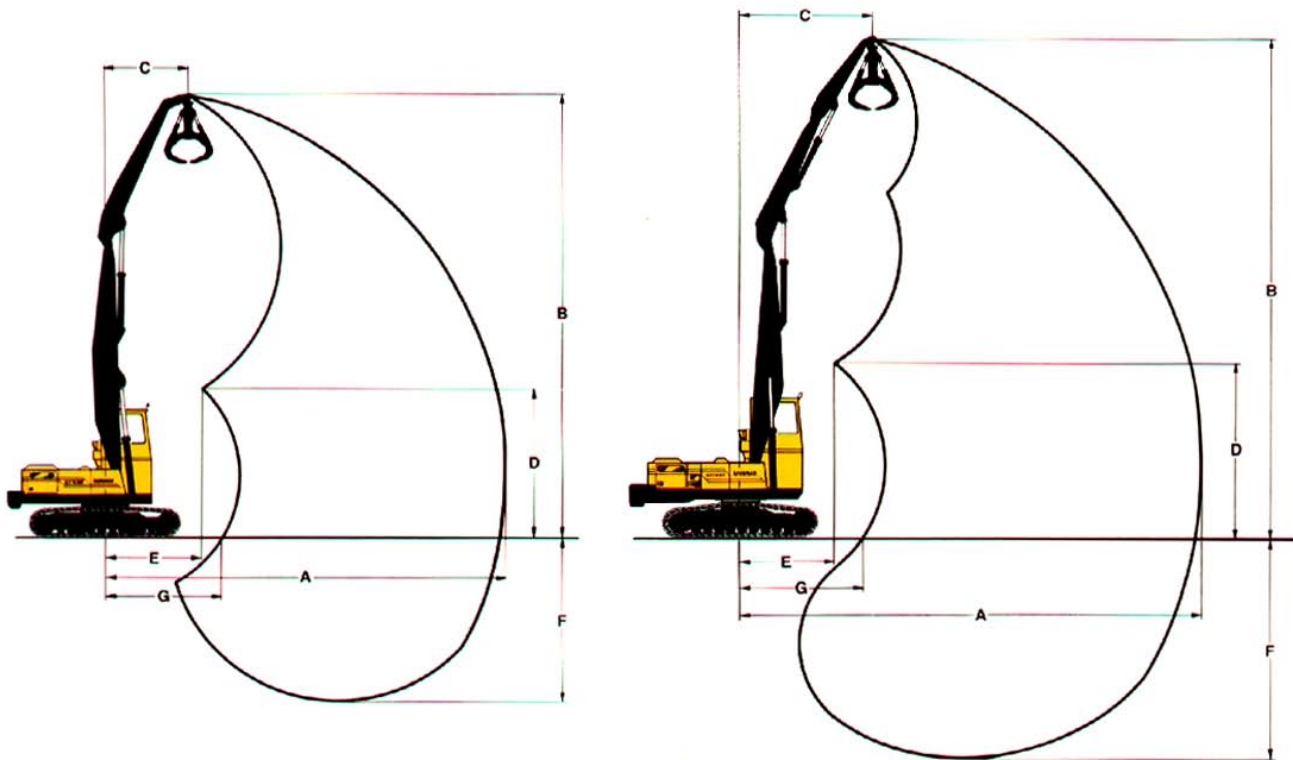
	EW230B	EC230B	EC300	EC420	EC620
K1	4,75 m	4,37 m	4,53 m	4,71 m	4,92 m
L	2,46 m	2,22 m	2,36 m	2,61 m	2,91 m
M	2,49 m	2,49 m	2,75 m	2,90 m	3,03 m
N	0,33 m	0,47 m	0,42 m	0,46 m	0,55 m
O	0,60 m	0,60 m	0,70 m	0,70 m	0,80 m
P	1,90 m	2,56 m	2,65 m	2,80 m	3,40 m
Q	2,97 m	2,99 m	3,15 m	3,30 m	3,96 m
R	3,83 m	-	-	-	-
R1	3,85 m	-	-	-	-
S	0,53 m	-	-	-	-
S1	0,46 m	-	-	-	-

## WORKING RANGES – EW230B and EC230B



	EW230B		EC230B	
<b>Boom</b> ..... m	<b>6,0</b>	<b>6,75</b>	<b>6,0</b>	<b>6,75</b>
<b>Dipper arm</b> ..... m	<b>4,4</b>	<b>5,15</b>	<b>4,4</b>	<b>5,15</b>
A Max. reach, slewing centre-dipper pin ..... m	10,4	11,7	10,4	11,7
B Max. height, ground-dipper pin ..... m	11,8	13,1	11,5	12,8
C Distance from slewing centre-dipper pin at position B ..... m	2,6	3,3	2,6	3,3
D Max. height, ground-dipper pin, boom at maximum lift, dipper folded ..... m	4,2	4,3	4,0	4,0
E Distance from slewing centre-dipper pin at position D ..... m	2,5	2,5	2,5	2,5
F Max. depth, ground-dipper pin ..... m	3,3	3,5	3,5	3,7
G Min. reach, slewing centre-dipper pin at ground level ..... m	2,6	2,5	2,8	2,7


## WORKING RANGES – EC300, EC420 and EC620



	EC300	EC420 2-piece equipment	EC420 3-piece equipment	EC620
<b>Boom</b> ..... m	7,4	8,6	7,0	10,3
<b>Dipper arm</b> ..... m	5,5	6,5	4,37	8,1
<b>Jib</b> ..... m			3,25	
A Max. reach, slewing centre-dipper pin ..... m	12,8	15,1	14,7	18,3
B Max. height, ground-dipper pin ..... m	14,3	16,5	16,1	19,7
C Distance from slewing centre-dipper pin at position B ..... m	2,7	4,4	4,3	4,7
D Max. height, ground-dipper pin, boom at maximum lift, dipper folded ..... m	4,9	5,3	5,7	5,6
E Distance from slewing centre-dipper pin at position D ..... m	3,0	4,2	3,0	4,6
F Max. depth, ground-dipper pin ..... m	5,2	6,6	7,1	6,0
G Min. reach, slewing centre-dipper pin at ground level ..... m	3,6	4,6	3,9	5,2

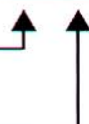
# STABILITY AND LIFTING CAPACITIES EW230B

Unit: 1 000 kg.

	Height of dipper arm top	 Lifting capacity at 360° swing										
		Reach from machine center										
		3,0 m	4,5 m	6,0 m	7,5 m	9,0 m	10,5 m	12,0 m	13,5 m	15,0 m	Max. reach	Max. m
<b>6,0 m boom</b> <b>4,4 m arm</b> <b>Counterweight</b> <b>3 000 kg</b> <b>4 outriggers</b> <b>down</b> <b>Solid tyres</b>	12,0 m											
	10,5 m		15,3 7,56								9,70 5,68	5,9
	9,0 m			9,55 6,63	6,61 5,19						6,53 5,07	7,6
	7,5 m			9,57 6,54	6,69 5,88						5,19 4,66	8,8
	6,0 m		15,4 7,96	9,45 6,80	6,63 5,96	4,98 5,29					4,51 4,49	9,6
	4,5 m		14,9 9,07	9,20 7,32	6,51 6,18	4,92 5,33					4,14 4,48	10,1
	3,0 m		14,1 10,5	8,86 7,92	6,33 6,43	4,84 5,37					3,93 4,37	10,4
	1,5 m		13,3 11,4	8,52 8,32	6,15 6,55	4,74 5,30					3,89 4,17	10,4
	0,0 m		12,9 9,78	8,26 8,21	6,01 6,37	4,67 4,99					3,97 3,82	10,2
	-1,5 m		12,7 9,11	8,12 7,45	5,92 5,73	4,63 4,24					4,23 3,44	9,7
-3,0 m		12,7 7,50	8,09 5,92	5,92 4,44						5,21 3,65	8,3	
<b>6,75 m boom</b> <b>5,15 m arm</b> <b>Counterweight</b> <b>3 000 kg</b> <b>4 outriggers</b> <b>down</b> <b>Solid tyres</b>	12,0 m											
	10,5 m			9,70 5,93	6,69 4,65						6,05 3,99	8,0
	9,0 m			9,77 5,83	6,78 5,26	5,00 4,25					4,77 3,83	9,3
	7,5 m			9,71 5,92	6,75 5,28	5,02 4,77					4,03 3,65	10,3
	6,0 m			9,50 6,28	6,63 5,47	4,96 4,84	3,86 4,31				3,59 3,56	11,0
	4,5 m		14,9 8,58	9,15 6,86	6,44 5,76	4,85 4,97	3,81 4,33				3,36 3,69	11,4
	3,0 m		13,9 9,99	8,70 7,50	6,20 6,06	4,72 5,09	3,74 4,33				3,18 3,58	11,7
	1,5 m		12,9 10,9	8,26 7,94	5,96 6,25	4,58 5,13	3,66 4,25				3,14 3,55	11,7
	0,0 m		12,3 6,89	7,93 7,95	5,76 6,20	4,46 5,00	3,60 4,02				3,19 3,33	11,5
	-1,5 m		12,1 6,32	7,73 7,41	5,63 5,81	4,39 4,61	3,56 3,52				3,34 3,04	11,1
-3,0 m		12,0 6,88	7,67 6,31	5,59 4,99	4,36 3,84	3,60 2,59				3,60 2,59	10,5	

Tipping load\*

Hydr. lifting capacities\*\*



\* Regardless of the hydraulic lifting capacity of the machine.

\*\* Regardless of the stability of the machine.

Working pressure with HLD = 32 MPa (320 bar)

# STABILITY AND LIFTING CAPACITIES FOR EC230B

Unit: 1 000 kg.

	Height of dipper arm top	 Lifting capacity at 360° swing											
		Reach from machine center											
		3,0 m	4,5 m	6,0 m	7,5 m	9,0 m	10,5 m	12,0 m	13,5 m	15,0 m	Max. reach	Max. m	
<b>6,0 m boom</b> <b>4,4 m arm</b> <b>Counterweight</b> <b>3 500 kg</b> <b>600 mm track shoes</b>	12,0 m												
	10,5 m		11,0 7,38									8,09 5,93	5,5
	9,0 m			7,20 6,69								5,20 5,04	7,4
	7,5 m			7,25 6,53	5,13 5,89							4,06 4,49	8,7
	6,0 m			7,16 6,73	5,10 5,93	3,83 5,28						3,53 4,46	9,5
	4,5 m		10,8 8,85	6,95 7,22	4,99 6,14	3,79 5,32						3,23 4,61	10,0
	3,0 m		10,1 10,3	6,65 7,83	4,83 6,39	3,71 5,37						3,05 4,54	10,3
	1,5 m		9,47 11,3	6,34 8,28	4,67 6,54	3,62 5,33						2,97 4,24	10,4
	0,0 m		9,02 10,4	6,09 8,27	4,52 6,42	3,55 5,06						3,02 3,95	10,2
	-1,5 m		8,82 9,02	5,94 7,62	4,44 5,88	3,51 4,41						3,17 3,52	9,8
-3,0 m		8,80 7,95	5,90 6,23	4,41 4,71							3,69 3,48	8,7	
<b>6,75 m boom</b> <b>5,15 m arm</b> <b>Counterweight</b> <b>3 500 kg</b> <b>600 mm track shoes</b>	12,0 m		11,1 5,93									8,41 5,01	5,4
	10,5 m			7,30 5,80	5,08 4,33							4,91 4,10	7,7
	9,0 m			7,40 5,84	5,19 5,28	3,82 3,96						3,71 3,68	9,2
	7,5 m			7,36 5,89	5,18 5,27	3,86 4,77						3,13 3,57	10,2
	6,0 m			7,19 6,21	5,09 5,43	3,81 4,82	2,94 4,31					2,78 3,57	10,9
	4,5 m		10,8 8,36	6,89 6,75	4,92 5,70	3,72 4,94	2,90 4,32					2,54 3,53	11,4
	3,0 m		9,95 9,77	6,50 7,40	4,70 6,01	3,59 5,07	2,84 4,33					2,44 3,79	11,6
	1,5 m		9,11 10,8	6,10 7,89	4,48 6,23	3,46 5,13	2,76 4,27					2,37 3,59	11,7
	0,0 m		8,54 7,27	5,77 7,98	4,28 6,23	3,35 5,03	2,70 4,07					2,39 3,41	11,5
	-1,5 m		8,28 6,30	5,58 7,54	4,16 5,90	3,27 4,70	2,66 3,63					2,46 3,08	11,2
-3,0 m		8,23 6,75	5,50 6,53	4,10 5,16	3,24 4,00	2,67 2,75					2,65 2,70	10,6	
-4,5 m			5,53 4,93	4,11 3,89							3,70 3,43	8,2	

Tipping load\*

Hydr. lifting capacities\*\*

\* Regardless of the hydraulic lifting capacity of the machine.


\*\* Regardless of the stability of the machine.

Working pressure with HLD = 32 MPa (320 bar)



# STABILITY AND LIFTING CAPACITIES FOR EC300

Unit: 1 000 kg.

	Height of dipper arm top	 Lifting capacity at 360° swing											
		Reach from machine center										Max. reach	Max. m
		3,0 m	4,5 m	6,0 m	7,5 m	9,0 m	10,5 m	12,0 m	13,5 m	15,0 m			
<b>7,4 m boom</b> <b>5,5 m arm</b> <b>Counterweight</b> <b>5 000 kg</b> <b>700 mm track shoes</b>	13,5 m		17,0 7,28									12,5 6,05	5,5
	12,0 m			11,3 7,02	7,88 5,57							7,14 4,82	8,0
	10,5 m			11,5 7,43	8,08 6,81	6,00 5,35						5,40 4,36	9,6
	9,0 m			11,5 7,34	8,11 6,83	6,07 6,42	4,67 4,60					4,46 4,02	10,8
	7,5 m			11,3 7,66	8,00 7,01	6,02 6,48	4,68 6,02					3,96 4,02	11,6
	6,0 m		17,2 8,14	10,9 8,41	7,79 7,44	5,89 6,71	4,62 6,13	3,69 4,42				3,61 4,00	12,2
	4,5 m		16,1 11,1	10,4 9,50	7,48 8,04	5,71 7,04	4,51 6,28	3,65 5,51				3,38 4,00	12,6
	3,0 m		14,8 14,4	9,75 10,7	7,12 8,70	5,49 7,39	4,38 6,44	3,58 5,66				3,25 4,10	12,8
	1,5 m		13,5 8,75	9,14 11,7	6,77 9,23	5,28 7,66	4,25 6,54	3,51 5,62				3,21 4,33	12,8
	0,0 m		12,8 5,72	8,68 12,1	6,48 9,46	5,10 7,75	4,14 6,50	3,45 5,42				3,22 4,30	12,7
	-1,5 m		12,5 5,96	8,43 11,8	6,30 9,29	4,97 7,56	4,07 6,23	3,43 4,95				3,34 4,68	12,3
	-3,0 m		12,5 6,92	8,34 10,8	6,21 8,64	4,92 7,00	4,05 5,61					3,54 4,26	11,8
-4,5 m			8,38 9,19	6,23 7,43	4,93 5,93						4,16 4,55	10,4	

Tipping load\*

Hydr. lifting capacities\*\*




- \* Regardless of the hydraulic lifting capacity of the machine.
- \*\* Regardless of the stability of the machine.

Working pressure with HLD = 30 MPa (300 bar)

# STABILITY AND LIFTING CAPACITIES FOR EC420

Unit: 1 000 kg.

	Height of dipper arm top	 Lifting capacity at 360° swing														
		Reach from machine center														
		4,5 m	6,0 m	7,5 m	9,0 m	10,5 m	12,0 m	13,5 m	15,0 m	16,5 m	Max. reach	Max. m				
<b>8,6 m boom</b> <b>6,5 m arm</b> <b>Counterweight</b> <b>7 800 kg</b> <b>700 mm track shoes</b>	16,5 m											25,3	9,71	4,6		
	15,0 m			12,2	7,70								11,1	6,88	8,0	
	13,5 m			12,6	8,98	9,50	7,65						7,89	5,83	10,1	
	12,0 m			12,8	8,85	9,67	8,26	7,55	7,31				6,40	5,32	11,6	
	10,5 m					9,69	8,15	7,62	7,66	6,11	6,63		5,55	5,14	12,7	
	9,0 m			12,7	8,97	9,61	8,27	7,58	7,69	6,12	7,20	5,00	5,05	4,96	4,89	13,6
	7,5 m			12,4	9,48	9,44	8,58	7,47	7,87	6,07	7,27	5,01	6,72	4,55	4,63	14,3
	6,0 m	16,7	11,0	12,0	10,3	9,17	9,05	7,30	8,14	5,96	7,40	4,96	6,77	4,33	4,88	14,7
	4,5 m	15,8	13,6	11,5	11,2	8,85	9,60	7,09	8,46	5,83	7,57	4,88	6,81	4,14	4,72	15,0
	3,0 m	14,8	15,3	10,9	12,1	8,51	10,1	6,87	8,76	5,69	7,71	4,80	6,83	4,11	5,43	15,2
	1,5 m	14,0	16,4	10,4	12,8	8,19	10,5	6,66	8,97	5,56	7,78	4,72	6,78	4,08	5,59	15,2
	0,0 m	13,4	12,4	10,0	13,1	7,93	10,7	6,49	9,00	5,44	7,71	4,65	6,59	4,06	5,01	15,0
	-1,5 m	13,1	10,8	9,79	12,8	7,75	10,5	6,37	8,78	5,37	7,42	4,62	6,18	4,19	4,97	14,7
	-3,0 m	13,0	11,3	9,68	12,0	7,67	9,88	6,31	8,24	5,34	6,85	4,63	5,42	4,40	4,57	14,2
-4,5 m	13,1	12,6	9,70	10,6	7,67	8,82	6,32	7,29	5,37	5,85	4,74	4,04	4,74	4,04	13,5	
-6,0 m	13,3	10,1	9,81	8,63	7,75	7,19	6,40	5,78					5,78	4,80	11,5	

Tipping load\*


Hydr. lifting capacities\*\*

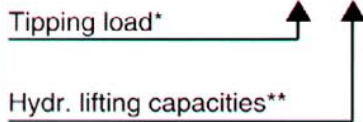
- \* Regardless of the hydraulic lifting capacity of the machine.
- \*\* Regardless of the stability of the machine.

Working pressure with HLD = 30 MPa (300 bar)

# STABILITY AND LIFTING CAPACITIES FOR EC620

Unit: 1 000 kg.

	Height of dipper arm top	 Lifting capacity at 360° swing											
		Reach from machine center											
		6,0 m	7,5 m	9,0 m	10,5 m	12,0 m	13,5 m	15,0 m	16,5 m	18,0 m	Max. reach	Max. m	
<b>10,3 m boom</b> <b>8,1 m arm</b> <b>Counterweight</b> <b>10 600 kg</b> <b>800 mm track shoes</b>	18,0 m		22,4 9,86	16,6 7,86								16,6 7,86	9,0
	16,5 m			17,3 9,66	13,4 8,11							11,8 6,90	11,3
	15,0 m			17,7 10,4	13,8 9,43	10,9 7,93						9,35 6,14	13,1
	13,5 m			17,8 10,8	13,9 10,2	11,1 9,18	9,02 7,49					8,00 5,89	14,4
	12,0 m			17,8 11,1	13,9 10,6	11,2 9,59	9,10 8,74	7,48 6,63				7,03 5,60	15,5
	10,5 m			17,6 11,5	13,8 10,7	11,1 9,61	9,08 8,73	7,51 7,92				6,34 5,35	16,4
	9,0 m			17,3 12,2	13,5 10,8	10,9 9,70	8,97 8,76	7,46 7,92	6,25 6,66			5,92 5,52	17,0
	7,5 m		22,3 12,5	16,8 12,6	13,2 11,1	10,7 9,84	8,79 8,82	7,35 7,92	6,20 7,06			5,51 5,26	17,6
	6,0 m	30,2 12,9	21,3 14,9	16,1 13,1	12,7 11,4	10,3 9,99	8,56 8,88	7,20 7,91	6,12 7,00	5,24 5,21	5,24 5,21	5,24 5,21	18,0
	4,5 m	28,0 20,6	20,0 16,4	15,3 13,6	12,2 11,6	9,95 10,1	8,30 8,90	7,02 7,87	6,00 6,90	5,16 5,81	5,09 5,43	5,09 5,43	18,2
	3,0 m	25,6 21,8	18,7 17,0	14,4 13,9	11,6 11,8	9,56 10,2	8,03 8,87	6,83 7,76	5,88 6,74	5,10 5,58	4,98 5,33	4,98 5,33	18,3
	1,5 m	23,6 12,2	17,4 17,2	13,6 14,0	11,1 11,8	9,19 10,1	7,76 8,72	6,65 7,56	5,76 6,47	5,03 5,21	4,93 4,93	4,93 4,93	18,3
	0,0 m	22,2 7,66	16,5 16,8	13,0 13,7	10,6 11,5	8,86 9,80	7,53 8,42	6,49 7,22	5,65 6,06	4,99 4,65	4,93 4,45	4,93 4,45	18,2
	-1,5 m	21,4 7,10	15,9 15,1	12,5 13,0	10,2 10,9	8,59 9,29	7,34 7,92	6,36 6,69	5,58 5,45		5,02 4,00	5,02 4,00	17,9
	-3,0 m	21,1 7,55	15,5 13,5	12,2 11,8	10,0 10,0	8,41 8,49	7,21 7,17	6,27 5,93	5,54 4,58		5,32 3,96	5,32 3,96	17,1
-4,5 m		15,4 11,7	12,1 10,2	9,87 8,69	8,31 7,37	7,14 6,12	6,25 4,85			5,97 4,34	5,97 4,34	15,6	
-6,0 m				9,85 6,97						8,72 6,19	8,72 6,19	11,6	



\* Regardless of the hydraulic lifting capacity of the machine.

\*\* Regardless of the stability of the machine.

Working pressure = 30 MPa (300 bar)

## STANDARD EQUIPMENT

<p><b>Engine and Electrical System</b>          Computer controlled monitoring system          Battery disconnecter and main fuel tap          Air filter with indicator          Hour meter          Electric preheating element          Revs counter          Fuel meter          Temperature meter for cooling fluid and hydraulic oil          24 volt electrical system          Cranked exhaust pipe</p> <p><b>Undercarriage – crawler</b>          Slew ring in oil bath          Top rollers, 2 pcs          Tripple grouser track shoes with mud holes (EC230B-EC300)          Hydraulic track adjuster          Derailing shields</p> <p><b>Undercarriage – wheel</b>          Slew ring in oil bath          Twin wheels 10.00 – 20PR16          Four outriggers          4-wheel drive          Oscillating front axle <math>\pm 7^\circ</math>          Axles with hub reduction          2-circuit travel brakes</p>	<p><b>Safety and Comfort</b>          Cab heating with 14 outlets          Filtered air intake          Openable side pane in the cab door          Emergency exit through rear window          Ergonomically designed and adjustable operator's seat          Rear view mirrors,          2 exterior          1 interior          Lights (crawler):          5 working lights, front, halogen          1 working light, rear, halogen          Lights (wheel):          headlights,          full and dipped beam          asymmetrical, halogen          3 working lights, front, halogen          1 working light, rear, halogen          Brakelights          Rear lights          Direction indicators          Instrument lighting          Illuminated cab, engine compartment and fuel filling compartment          Safety bar for control levers          Tinted windows (clear forward)          Double intermittent windscreen wipers</p>	<p>Windscreen washers          Hydraulic refuelling pump, 90 l/min          Air horn          Hose rupture valve on boom cylinder</p> <p><b>Hydraulics</b>          Three variable axial piston working pumps (EC/EW230B – EC420)          Three variable and two fixed axial piston working pumps (EC620)          Mode selector          Standard filter cartridges for return, leak oil and respiration filter systems          Dual main valve for the travel and equipment functions          Float position on boom</p>	<p><b>Equipment</b>          6,0 m boom (EC/EW230B)          7,4 m boom (EC300)          8,6 m boom (EC420)          10,3 m boom (EC620)          4,4 m dipper arm (EC/EW230B)          5,5 m dipper arm (EC300)          6,5 m dipper arm (EC420)          8,1 m dipper arm (EC620)          End dampening on all cylinders          Spherical link bearings in all connections          Friction welded piston rod eyes</p>
---	--	---	---

## OPTIONAL EQUIPMENT *(Standard on certain markets)*

<p><b>Engine and Electrical System</b>          Electric over speed protector          Digital timer          Engine heater          Immersion heater, 220 V          Precyclone with exhaust ejector</p> <p><b>Undercarriage – crawler</b>          Alternative track shoes          Skid rails (EC230B-EC420)</p> <p><b>Undercarriage – wheel</b>          Solid rubber tyres          Wide base tyres          Dozer blade          Mud guards          Stone protection rings          Widening rings 2 x 50 mm          Articulated outrigger plates          Tool box</p>	<p><b>Safety and Comfort</b>          Interior and exterior glare shields          Protective grid for front pane/roof pane (FOPS)          Fire extinguisher          Seat belt          Rotating beacon          Rear window jalousie          Air conditioning          Micro filter for the cab          Extra hose rupture valve on dipper arm cylinders          600 mm and 1220 mm cab extensions          1830 mm cab extension (EC420/EC620)          Extra circulation pump for the heating system          Radio cassette</p>	<p><b>Hydraulics</b>          Installation of a 4th working pump (EC/EW230B-EC420)          Hydraulic equipment for:          rotating grab/clamshell generator (magnet)          Biologically degradable oil</p>	<p><b>Equipment</b>          6,75 m boom (EC/EW230B)          5,15 m dipper arm (EC/EW230B)          3-piece equipment (EC420)          7,0 m boom          4,37 m dipper arm          3,25 m jib</p>
---	--	---	---

Under our policy of continuous product improvement, we reserve the right to change specifications and design without prior notice. The illustrations do not necessarily show the standard version of the machine.

## VME Excavators AB

Box 115, S-241 22 ESLÖV SWEDEN

Ref. No. 21 1 430 0067 ENGLISH (global)

Printed in Sweden 03.11.94