

VOLVO BACKHOE LOADER

BL70



MORE CARE. BUILT IN.



LOADS OF PERFORMANCE, BY DESIGN.

More care. Built in. It's the Volvo way and it's the BL70 Backhoe Loader. Part of Volvo's compact global range, with Compact Wheel Loaders, Compact Excavators and Skid Steer Loaders, the BL70 offers a high performance backhoe, durable loader and Volvo comfort, serviceability and safety.

Your inspiration, our passion

For over 80 years, Volvo Construction Equipment has delivered productive machines that help make you more profitable. The Volvo BL70 Backhoe Loader is the continuation of this legacy, and it's been built for you from the ground up. Designed and built with direct input from backhoe customers at every phase of the development, the Volvo BL70 is everything you've ever wanted in a machine - a backhoe with the power and performance of a Volvo Excavator, a loader with the strength and simplicity of a Volvo Wheel Loader, a comfortable operator's station and serviceability features that ensure long, productive machine life.

Terrain tested toughness

To ensure the BL70 Backhoe Loader meets the strict Volvo quality standards applied to all our products, the machine has gone through rigorous tests to prepare it for the day-to-day assault of deep trenching, heavy lifting, loading, craning and more. And because it was designed and built from the ground up - not simply remodeled over time - it functions as a cohesive unit to make you more productive than ever.

Proven power, proven performance

The Volvo BL70 is equipped with a proven 90 net hp turbocharged Volvo diesel engine for reliable, responsive power. The standard Powershuttle gearbox features four fully synchronized gear and electro-hydraulic switching between forward and reverse. For increased balance, the transmission is mounted directly to the engine. The optional Powershift transmission has four forward and reverse speeds and features a standard kick down for fast, smooth shifting from second to first gear. For ease of operation, a forward/reverse switch is integrated on the loader joystick. A fully automatic mode is activated in fourth gear for effortless transport.

Long life on the job

The Volvo BL70's undercarriage and frame are designed and built strong for maximum performance and long life. Every hydraulic line, fitting, pin and bolt is corrosion protected, and all hydraulic fittings employ O-ring face seal technology to ensure dry hydraulic joints. All electrical components are of the highest quality and all connections feature a waterproof, snap-together design. The rear kingpost area is accented by a stout, 15" double clevis mainframe, a heavy-duty, spring-applied hydraulic-release boom lock and high-mounted dual swing cylinders. Control valve hoses are routed through the cast iron kingpost and hydraulic lines are routed within the profile of the boom and dipper for protection and visibility.



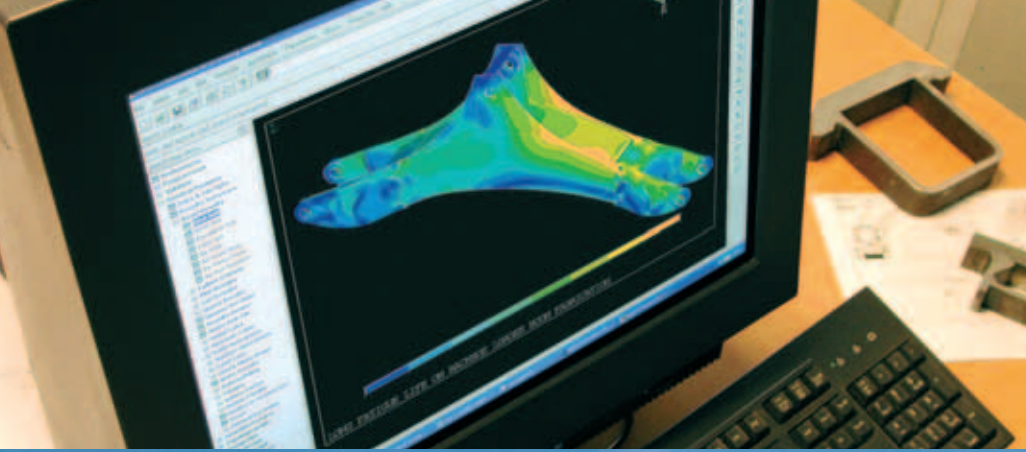
- The Volvo engine delivers proven power.



- More care, built in from the ground up.



- Quality and safety ensured with state of the art technology.



- Designed and built for your work.
- Versatile multi-purpose bucket.



GET READY TO BREAK NEW GROUND.

The Volvo BL70 Backhoe Loader was born to dig - and it's ready to tackle the toughest jobs around. Versatile and strong, the BL70's backhoe will help you dig into greater profits. A perfect combination of power and precision, the Volvo BL70 is the ideal solution for all your applications.

Built to last

The Volvo BL70 features a closed-box construction boom with fewer components - and fewer welds - to give it superior strength. The kingpost is made of cast iron, which provides uncompromising strength and durability, while still allowing for flexible movement.

Always ready to perform

When you need to perform in difficult conditions, day in and day out, the BL70 delivers every time. The BL70's high performance backhoe has a 4388 mm dig depth and 591 kN of bucket breakout force. The narrow curved boom provides excellent visibility, easy truck loading and outstanding lift capacity. For safe travel on roads, the boom lock can be manually-applied and hydraulically-released. And there's a locking pin to secure the swing in place.

Added versatility

Few machines offer more versatility than the Volvo Backhoe Loader. And with a wide assortment of versatile attachments, you've got the flexibility of an entire fleet of machines. Choose the optional hydraulic backhoe attachment that allows you to save time and effort by quickly changing attachments from the operator's station. You can also get an auxiliary hydraulic circuit to operate backhoe and loader attachments, such as a hammer and a MP bucket.

We're flexible

In today's jobsite, you demand a backhoe loader that can adapt to the work at hand. That's why the Volvo BL70 Backhoe Loader has optional features like an extendible dipper. And because operators are as diverse as the jobs, the Volvo BL70 offers added versatility and comfort with the choice of excavator or backhoe control patterns.



- ROPS/FOPS certified safety cage.



- Quick, easy optional backhoe attachment bracket.



- High-mounted dual swing cylinders: out of the dirt.



- Roller switch operated extendable dipper.
- Curved, narrow boom: capacity and visibility.
- Powerful backhoe bucket dig force.



MAKE EVERY LOAD COUNT.

When it's time to backfill a trench or load a truck, you want it done fast and efficient. Volvo took what it learned from over 50 years of producing its Wheel Loaders to develop a loader that makes you more productive - with faster cycle times, outstanding lift capacity and easy operation.

The capacity to load more

The Volvo BL70 features a 1,3 cubic yard General Purpose Standard Bucket that gives you the capacity to move more material with every load, for faster cycle times, greater productivity and increased profitability. If you are looking for the ultimate in flexibility and versatility, an optional Multi-Purpose Bucket lets you perform up to nine separate functions. Both styles are available with a choice of bolt-on teeth or a reversible, bolt-on cutting edge.

Strength you can see

The Volvo BL70's loader features box-weld construction with a large, reinforced cross tube and friction-welded dual lift cylinders. This provides strength without excessive weight for greater lifting capacity and better visibility.

Enhanced vision

Increase cycle times and improved safety with performance enhancing visibility. The loader is configured along a sloped hood line to provide optimum visibility. And the loader features a center-mounted bucket cylinder for a better view - right down to the bucket corners. Even the paint scheme on the hood is optimized to help eliminate glare.

Pick up the pace

Nothing improves productivity and profitability like fast, efficient work. The single, center-mounted dump cylinder provides over 12445 lb of breakout force, so you can handle the load with speed, ease and no hesitation. There's also less hydraulic flow required

for faster dump times. And featuring a patented self-leveling system, the Volvo BL70 Backhoe Loader offers faster, smoother operation and better spoil retention.

Loads of possibilities

For increased versatility and to expand the BL70's capabilities, the loader attachment bracket provides the perfect solution. Quick and easy change from one attachment to another - without leaving the operator seat. There's no need to switch machines to complete the job. The BL70 loader attachment bracket makes your work faster, safer and more productive. We've designed it so that you can also use many attachments from other Volvo compacts and mid-range Volvo wheel loaders. Product line compatibility is just another way that Volvo helps make the BL70 your flexible business partner.

Take control of every load

You're in control of the backhoe loader built for productivity, ease of operation and comfort. The state-of-the-art loader is pilot operated and the multi-function control lever simplifies loading operations. The comfort-grip joystick allows for precision operation with minimal effort of all loader functions: raise, lower, tilt, return-to-dig and float. Simply push forward and backward the roller switch integrated on the joystick to open and close the multi-purpose bucket. There's also a transmission forward/reverse button and disconnect button on the joystick to help speed up cycle times.



- Versatile loader attachment bracket.



- Single center-mounted dump cylinder.



- Multi-function control lever.



- Pallet fork option for added versatility.
- 1,3 cubic yard general purpose bucket.
- Plenty of power for all applications.



TAKE COMFORT IN THE DETAILS.

Volvo understands you work long, hard hours. We also know that you don't always work in ideal conditions. That's why we spent so much time developing the operator's station that gives you the comfort you deserve - and the ease of operation you demand. Get comfortable with Volvo production.

Easy, comfortable operation

Once inside the cab, you'll find that all function controls are ergonomically placed on the right side console to reduce fatigue and maximize productivity through easy access. Comfortable grips and responsive handling allow operators to easily raise, lower, tilt, return-to-dig and float with precision and speed.

See your productivity rise

Flat windows assure no distortion. The front and rear side windows can also be partially or fully opened for comfort and ventilation. A one-piece, floor-to-ceiling rear window opens easily via gas cylinders, allowing excellent visibility to the working area. The rear window stores easily overhead, and provides a slight overhang to protect the operator's feet from rain. And with four front and four rear work lights provided standard, you get excellent visibility, even in low-light conditions.

It's all right where you want it

The comfortable, roomy operator's station offers a tilt steering column that adjusts to fit any sized operator. In addition, the front console contains well-placed, well-lit display indicators right in your field of vision. Separate heating and air conditioning systems offer the ultimate in operator comfort and convenience. Both systems feature strategically positioned adjustable ducts and individual fan and temperature controls - allowing you to extend your operating season by working comfortably - regardless of the weather. There are even ample storage areas for

tools, gloves, chains and more. And for easy clean up, the removable, cushioned floor mat is channeled so the water runs out the doors.

At the seat of comfort

Get more comfort features - regardless of your size - with a cushioned suspension seat with multiple adjustments, including lumbar supports, height, and fore and aft movement. There's also an optional air-ride, heated suspension seat with arm rests for even more comfort. An optional Boom Suspension System offers a smoother overall ride and can help assure material retention in the loader bucket.

Take control of your comfort

Increase backhoe production with standard joystick pilot controls. The joystick control columns are independent from the seat, but you can control the joysticks with your wrists, while your forearms rest comfortably on the seat armrests and your back is against the backrest. This allows the operator to enjoy ergonomic comfort, greater precision and the ease of operation of a hydraulic excavator. Joystick control columns are fully adjustable. For easy use of the optional extended dipper, simply push the roller switch integrated on the right hand side joystick. A pattern change valve lets you change from standard backhoe to excavator control based on operator preference.



- Air conditioning circulates through eight air vents.



- Tilting steering column.



- Easily rotate the seat with one hand.



- Optional mechanical controls if desired.
- Precise, easy pilot control comfort is standard.
- Plenty of floor space and storage.



UP AND RUNNING - SAFE AND SOUND.

If it's not running, you're losing money. That's why Volvo made the BL70 so easy to service and so safe to operate. Reliable, productive machines, easy access serviceability and safety that puts your mind at ease. These are Volvo priorities and they are the cornerstones of the Volvo BL70.

Open wide

Easy maintenance means more uptime and greater profits. For easy, total access to the engine compartment, simply release the hood latch and lift the tilt-up hood with one hand. Fluid fills and checks are on the left side of the engine and all engine filters are on the right side. The tilting hydraulic/transmission oil cooler allows easy access and cleaning.

More care. Built in.

The Volvo BL70 was designed for fast and simple maintenance with 50-hour greasing intervals, ground-level fluid checks grouped for easy maintenance and common filter access points.

Safe on the outside

The Volvo BL70 has a variety of features that make it safer to service, transport and work near. The integrated, heavy-duty loader safety strut holds the loader safely in the raised position. When you want to dig or transport the machine, the stabilizers add extra safety with locking anti-drift valves.

Safe on the inside

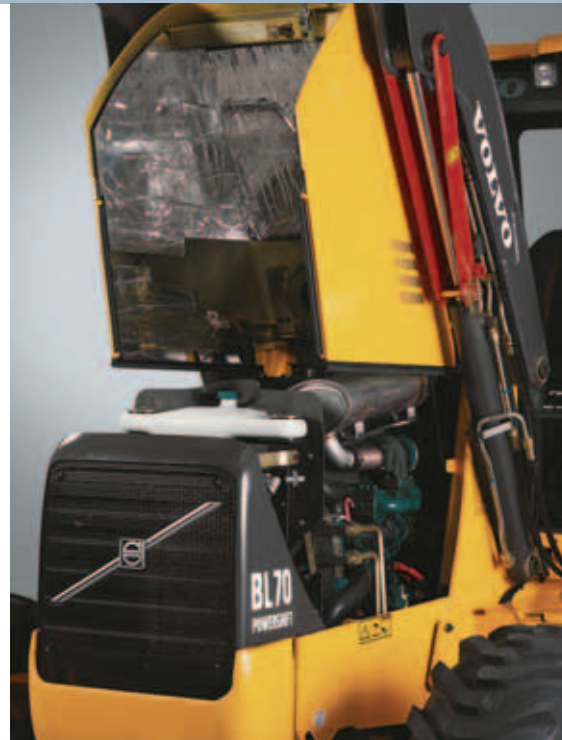
Entering and exiting the machine is simplified with three steps and easy-to-reach handrails. Climb aboard and work confidently with a retractable seat belt, rear view mirror and a mechanical parking brake. Enjoy excellent all-around visibility from large, flat windows and narrow cab pillars. Instrumentation provides audio and visual warnings of machine functions. The interlocking brake pedals give you the option of single or double pedal braking, for tighter turning and sure stopping power.

Protect your investment

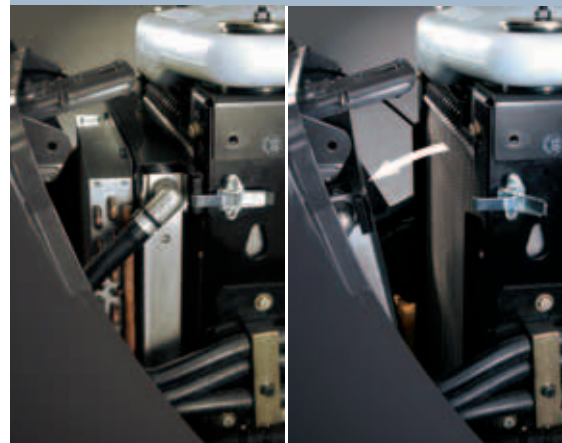
A single key operates all locks: Doors, ignition, hood, fuel cap and toolbox for simplicity and vandal protection. A standard battery disconnect switch prevents unwanted machine use and adds more safety. ROPS units also feature a standard lockable instrument panel to protect from vandals and the elements.

Performance for the long haul

Volvo Backhoe Loaders are backed by a standard warranty to keep you running. And with the strongest global dealer network always ready to assist you with parts and service, extended warranty programs and more, you have everything you need for maximum uptime, greater productivity and increased profitability. Contact your local dealer, and get started today!



- Rear-tilting one-piece hood.



- Tilting cooler/radiator access for easy cleaning.



- Integrated safety strut.



- Entry and exit: quick, safe and easy.
- Plenty of storage for tools and more.
- Optional multi-purpose bucket.



SPECIFICATIONS

Engine

Low-emission 90 net hp direct-injection, turbocharged, 4-cylinder, liquid-cooled Volvo diesel engine with a 28% torque rise.

Model	Volvo D4D
Displacement	4,04 l
Compression ratio	19:1
Rated speed	2200 rpm
Maximum torque @ 1500 rpm	390 Nm

Electrical system

Weatherproof connections. Standard 12-volt, 690 CCA battery with dual-battery option. Standard 95-amp alternator.

Drivetrain

Foot-operated differential lock allows 100% full lock on rear axle. Final reduction in wheel hubs by a three pinion outboard planetary drive.

Travel speed powershuttle

Maximum speed, forward/reverse

1	5,2 km/h
2	8,4 km/h
3	17 km/h
4	34 km/h

Brakes

Multi-plate, oil immersed, servo power assisted, self-adjusting outboard disc brakes with four wheel drive automatically engaged in third and fourth gear. Independent, interlocking, twin serrated brake pedals.

Steering

Hydrostatic steering with protected double acting single cylinder behind the front axle with remote grease fitting for axle pivot pin.

Four Wheel drive

Turns lock to lock	4
Steering angle of	55°
Turning Radius over the wheels	3,3 m
Turning radius over the loader bucket	4,9 m
Axle oscillation	8° each side

Hydraulic system

Closed-center, load-sensing, flow-sharing with a variable-displacement axial-piston pump powering the digging elements and attachments.

Max. flow	160 l/min
Working pressure	250 bar
System capacity	110 l

Weight

4WD cab machine with Multi-purpose loader bucket, 24 in. heavy-duty backhoe bucket, counterweight, 175 lb operator, full fuel tank, and extendible dipper.

Operating weight	8580 kg
-------------------------	---------

Transmission

Completely sealed 122 in. diameter torque converter mounted to engine flywheel with a flexplate. Powershuttle gear box with four forward and four reverse fully synchronized gears. Electro-hydraulic forward/reverse switch on the loader joystick. Forward/reverse lever on steering column.

Service fill capacities

Cooling system	19 l
Fuel tank	120 l
Engine oil (w/filter)	14 l
Rear axle - Differential oil capacity	14,5 l
Front axle (4WD) - Differential oil capacity	6,5 l
Hydraulic reservoir	41 l
Hydraulic system	110 l

Backhoe performance

High-performance backhoe is closed-box welded, narrow and curved, and includes a switch-activated boom lock and manual swing locking pin. Cast iron swing post. Cushioned swing, boom and bucket cylinders. Extendible dipper increases the reach by 39 in. Externally adjustable nylatron extendible dipper wear pads. Pilot joystick controls (backhoe or excavator pattern). Weekly (50-hour) greasing intervals.

Standard dipper

Bucket width	610 mm
Bucket capacity	0,20 m ³
Bucket digging force (SAE)	59,1 kN
Dipper digging force (SAE)	38,8 kN
Bucket rotation	194°

Extendible Dipper

Bucket width	610 mm
Bucket capacity	0,20 m ³
Bucket digging force (SAE)	59,1 kN
Dipper digging force (SAE)	
Ret	38,8 kN
Ext	28,5 kN
Bucket rotation	194°

Loader performance

Volvo patented single, low-effort, pilot-operated joystick controls all loader functions. Loader features a single cylinder and is self-leveling with float and return-to-dig. Loader is box weld constructed with large diameter cross member and friction welded dual lift cylinders. Optional Boom Suspension System (ride control).

13 cu. yd., 925 in. wide, general purpose or multi-purpose buckets with optional teeth and reversible bolt-on cutting edges. Integral safety strut. Weekly (50 hour) greasing intervals.

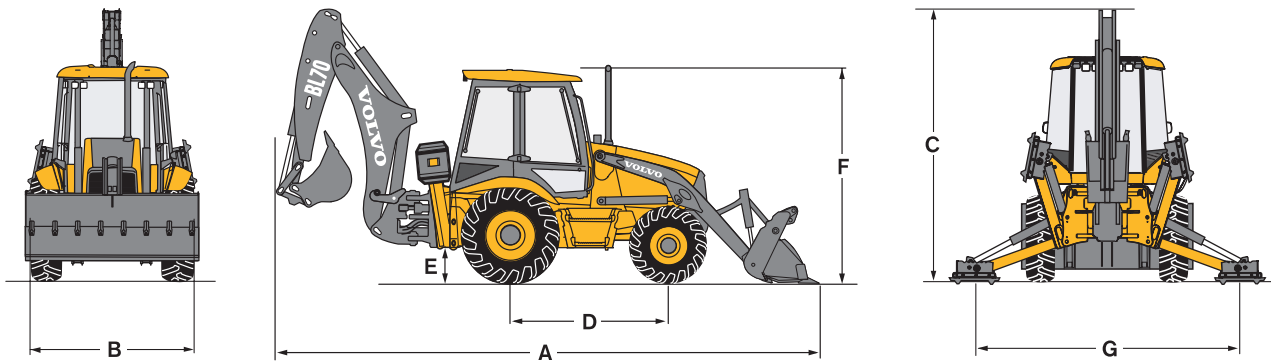
Lift capacity at full height (with general purpose bucket)	3154 kg
Bucket breakout force (with general purpose bucket)	55,4 kN

Cycle Times:

Raise to full height	4,6 sec
Dump time	1,8 sec
Curl time	2,3 sec
Lower	3,1 sec

Tires

Rear:	19,5Lx24 or 21Lx24 (option) or 19,5L-24, 10 Ply Goodyear IT525 (Option) or 21L-24, 10 Ply Goodyear IT525 (Option)
Front:	12,5/80-18 or 12,5/80-18, 10 Ply, Goodyear SG Lug (Option)

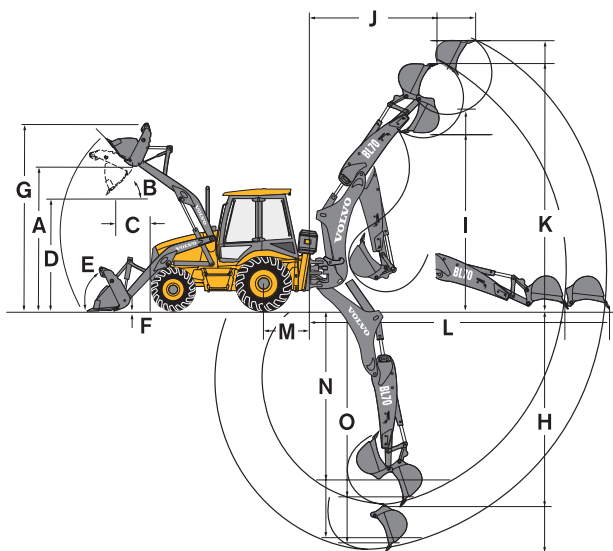


Dimensions

A - Overall length	7298 mm
B - Overall width	2459 mm
C - Overall height	3662 mm
D - Wheelbase 4WD	2188 mm
E - Ground clearance	318 mm
F - Height to top of ROPS (cab and canopy)	2897 mm
G - Stabiliser spread at ground level	3238 mm

Loader buckets	Width	Weight	Capacity
General Purpose bucket	2350 mm	450 kg	1000 l
Multipurpose bucket	2350 mm	784 kg	1000 l

Excavator bucket	Width	Weight	Capacity	Nbr. Teeth
	Heavy-Duty backhoe bucket	300 mm	114 kg	0,08 m ³
Heavy-Duty backhoe bucket	450 mm	140 kg	0,14 m ³	4
	610 mm	167 kg	0,2 m ³	5
	910 mm	215 kg	0,33 m ³	6
Grading bucket	1215 mm	135 kg	0,16 m ³	0
	1515 mm	158 kg	0,21 m ³	0



Loader dimensions

A - Height to hinge pin	3404 mm
B - Dump angle	49°
C - Dump reach at 45°	838 mm
D - Dump height at 45°	2662 mm
E - Bucket rollback at ground level	45°
F - Dig depth below grade	211 mm
G - Overall operating height, fully raised MP bucket	4413 mm

Backhoe dimensions - Standard dipper

H - Maximum digging depth (SAE)	4388 mm
J - Loading reach at maximum height	2910 mm
K - Operating height	5646 mm
L - Reach from swing post at ground level	5811 mm
M - Rear axle to swing post axis distance	1147 mm
N - Digging depth SAE 8 ft (2.44 m) flat bottom	4015 mm
O - Digging depth SAE 2ft (610 mm) flat bottom	4361 mm
Bucket digging force	59,1 kN
Dipper digging force	38,8 kN

Backhoe dimensions - Extendible dipper

H - Maximum digging depth (SAE)	Ret -	4388 mm
	Ext -	5448 mm
I - Loading Clearance	Ret -	3820 mm
	Ext -	4425 mm
J - Loading reach	Ret -	2910 mm
	Ext -	3792 mm
K - Operating height	Ret -	5646 mm
	Ext -	6279 mm
L - Reach from swing post at ground level	Ret -	5813 mm
	Ext -	6791 mm
N - Digging depth SAE 8 ft (2.44 m) flat bottom	Ret -	4015 mm
	Ext -	5147 mm
O - Digging depth SAE 2 ft (610 mm) flat bottom	Ret -	4361 mm
	Ext -	5418 mm
Bucket breakout force		59,1 kN
Dipper breakout force	Ret -	38,8 kN
	Ext -	28,5 kN
Bucket rotation		194°
Swing torque		26 kNm

LIFTING CAPACITY

Lift capacity figures comply with SAE J31.

All figures are stated in pounds (kilograms).

The large arc indicates boom-lift.

The small arc indicates dipper- lift with the boom at 63°.

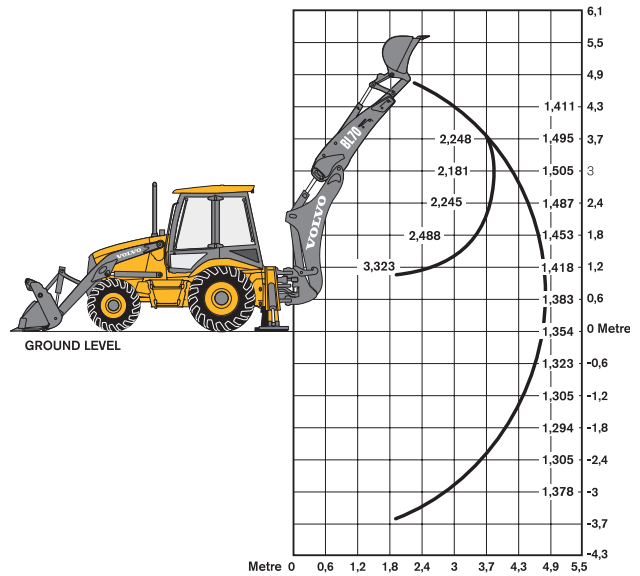
BL70 Backhoe with Standard Dipper

Equipped with 24" heavy-duty backhoe bucket,

1,3 cu. yd. heavy-duty loader bucket,

12,5/80x18 front tires,

19,5L-24 rear tires



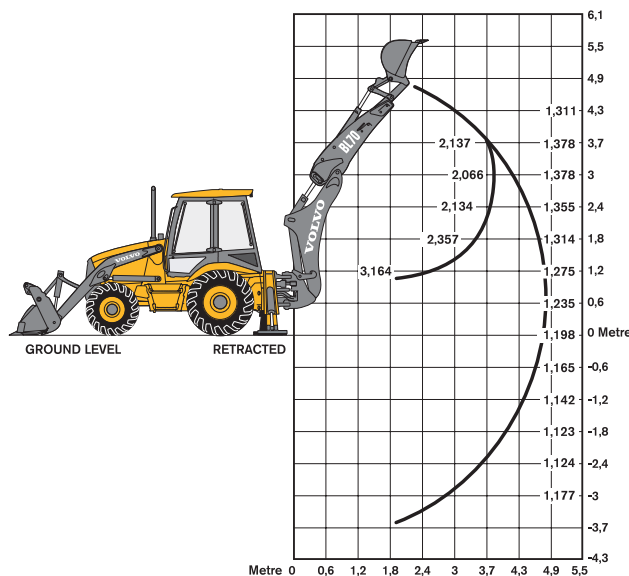
BL70 Backhoe with Extendible Dipper, Retracted

Equipped with 24" heavy-duty backhoe bucket,

13 cu. yd. heavy-duty loader bucket,

12,5/80x18 front tires,

19,5L-24 rear tires



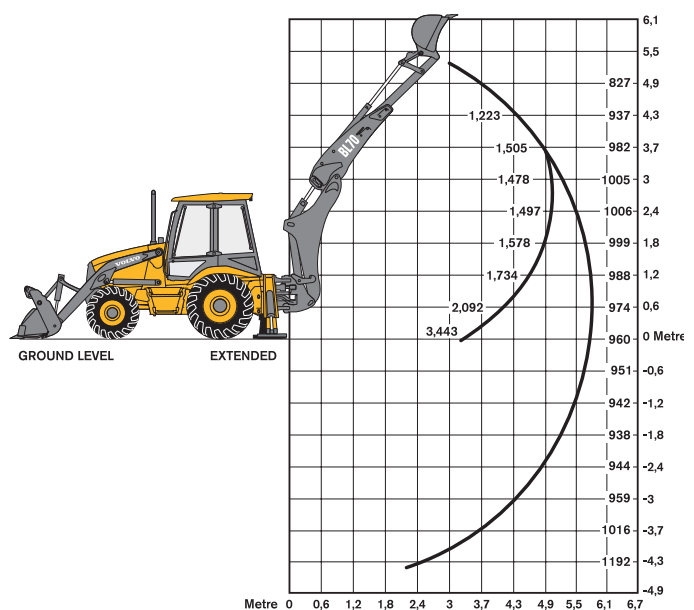
BL70 Backhoe with Extendible Dipper, Extended

Equipped with 24" heavy-duty backhoe bucket,

1,3 cu. yd. heavy-duty loader bucket,

12,5/80x18 front tires,

19,5L-24 rear tires



STANDARD EQUIPMENT

General

One-piece, unitized mainframe and componentized driveline. Machine tie down and lift points, cast iron front bumper. Resilient rear fenders, right-side mounted fuel tank, and tool box. Flip-open, rear-tilting, one-piece hood for ease of service. Sealed loader and backhoe pins and bushings provide 50-hour lubrication interval. Machine includes operator manual, AEM safety manual, service and safety decals.

Cab

Meets SAE ROPS/FOPS requirements, dual entry, serrated steps and easy-to-reach handrails, deluxe trim, heavy-duty cloth suspension seat with armrests and 2 in. retractable seat belt, tilt steering column, sunvisor, hand and foot throttle, padded floor mat, interior rearview mirror, and domelight. Four front and four rear work lights, back-up alarm, horn with front/rear facing access, warning buzzer, hazard flashers and turn signals. Two 12-volt mobile power sockets, cup holders, coat hook, storage trays. Heater/defroster system, cab pressurization, front/rear windshield wiper/washer, four flat tinted side windows that open fully or partially, one piece slide-open rear window.

Canopy

Meets SAE ROPS/FOPS requirements, dual entry, serrated steps and easy-to-reach handrails, heavy-duty vinyl suspension seat with armrests and 2 in. retractable seat belt, tilt steering column, hand and foot throttle, padded floor mat, interior rearview mirror. Four front and four rear work lights, back-up alarm, horn with front/rear facing access, hazard flashers and turn signals. One 12 volt mobile power sockets, cup holders, and storage trays. Sealed switches on right side instrument panel with lockable vandal guard.

Loader

Fabricated arms with dual lift cylinders and single, center-mounted dump cylinder, optional choice of buckets, with pilot-

operated joystick. Transmission disconnect and forward/reverse transmission direction change buttons on joystick in addition to a powershift direction lever on steering column. Hydro-mechanical self-leveling system, loader arm float and bucket return-to-dig.

Engine

Volvo 404 I, 90 SAE Net HP, turbocharged diesel engine which meets or exceeds EPA compliance requirements. Self-cleaning, dual element air cleaner, spin-on fuel filter, fuel and water separator, high ambient tilting cooling package, front grill, key-activated manifold cold start assist, anti-freeze protection. 500 hour service interval.

Transmission

Four speeds forward and four speeds reverse. Synchronized shifting in all gears, powershift direction change, 12.2 in. diameter torque converter, transmission disconnect switch on loader control lever and transmission shift lever, 100% foot activated differential lock, spin-on oil filter.

Rear Axle

Double reduction with outboard planetary drive. Switch activated differential lock. Ten-bolt pattern wheel hub.

Front Axle - 4WD

Cast iron bar axle with centrally-mounted and protected double-acting steering cylinder. Remote grease fitting for axle pivot pin. Double reduction with outboard planetary drive. Hydrostatic power steering utilizes main hydraulic pump via priority valve. Eight-bolt pattern wheel hub.

Brakes

External, multi-disc, oil immersed, hydraulically actuated and power assisted self adjusting service brakes. Brake pedals operable either independently or interlocked. Internal parking brake. 4WD units equipped with 4WD assist braking in third and fourth gears.

Electrical System

12-volt system. Meets IP65 water ingress test standard, 95 amp alternator, one 690 CCA low maintenance battery. Four front adjustable 55 watt halogen work lights and four rear adjustable 55 watt halogen work lights. Central fuse panel plus fuses and relays within tool box. Neutral start circuit and weatherproof connectors.

Instrumentation and Controls

Right side instrument panel with switches and visual warning system. Instruments to monitor the following machine functions: engine coolant temperature, engine rpm, machine hours, fuel level, engine preheating, engine oil pressure, air cleaner restriction, transmission oil temperature, service indicator, battery charging, hydraulic filter restriction, and hydraulic oil temperature.

Hydraulic System

Closed-center, load-sensing, flow sharing system with variable displacement axial piston pump, maximum flow of 42 US gallons per minute and system pressure of 3625 pounds per square inch. O-ring face seal hydraulic fittings, lockable hydraulic tank cap. Hoses and tubing designed for long life and ease of service.

Backhoe

Pilot-operated controls (switchable between SAE backhoe and ISO excavator pattern). Centermount standard dipper with 14 ft. 5 in. maximum dig depth, optional extendible dipper with 17 ft. 10 in. maximum dig depth, switch activated boom lock, and manual swing lock. State-of-the-art, high-performance backhoe, wide stance stabilizers with flipover pads and anti-drift valves, twin cylinder swing system, five ton lift eye, and optional choice of buckets.

Security

Single key system for ignition, cab doors, fuel tank, and tool box.

Warranty

12 month limited warranty included. Variety of optional Component Assurance Programs available.

OPTIONAL EQUIPMENT

Operator's Area

Boom Suspension System (ride control)
Rotating beacon with in-cab switch.
AM-FM stereo CD radio with speakers.
Air-conditioning for cab.
Front windshield and wiper for canopy.
Sun visor kit for canopy.
3 in. wide retractable seat belt.
Exterior rearview mirrors.
Mechanical backhoe controls in lieu of pilot controls.

Fully automatic Powershift transmission

Backhoe Attachments

Backhoe bucket attachment bracket, mechanical.
Backhoe bucket attachment bracket, hydraulic.

Backhoe Auxiliary Hydraulics

Hydraulic breaker circuit kit (Includes valve, control switch, boom pipework and machine end quick couplers).
Rigid Hammer Lines.

Loader Attachments

Multipurpose loader bucket.
Loader attachment bracket.
Fork kit for general purpose loader bucket.
Flip-over fork kit for multipurpose loader bucket.

Loader Auxiliary Hydraulics

Required for multi-purpose bucket, loader attachment bracket, and other hydraulic attachments.
Loader hydraulics and loader arm pipework for operation of multipurpose bucket.

Cutting Edges and Teeth

Bucket teeth, bolt-on, set of eight.
Reversible, bolt-on cutting edge for bucket.

Miscellaneous

Anti theft device.
Hand held hydraulic circuit.
Special paint.
Special quantities (Call Volvo Order Desk).



Volvo Construction Equipment is different. It's designed, built and supported in a different way. That difference comes from an engineering heritage of over 170 years. A heritage of thinking first about the people who actually use the machines. About how to help them be safer, more comfortable, more productive. About the environment we all share. The result of that thinking is a growing range of machines and a global support network dedicated to helping you do more. People around the world are proud to use Volvo. And we're proud of what makes Volvo different – **More care. Built in.**



All products are not available in all markets. Under our policy of continuous improvement, we reserve the right to change specifications and design without prior notice. The illustrations do not necessarily show the standard version of the machine.

VOLVO

Construction Equipment

www.volvoce.com

Ref. No. 30 2 432 1155 English (International region)
Printed in Sweden 2006.12
Volvo, Belley CEX