

VOLVO WHEEL LOADERS
**FIRE SUPPRESSION
SYSTEM**



MORE CARE. BUILT IN.



A TAILOR MADE FIRE SUPPRESSION SYSTEM TO MEET ALL NEEDS

Once again, Volvo is leading the way in safety with a fully integrated, factory installed fire suppression system developed especially for Volvo wheel loaders. A highly reliable system that meets the tough demands from both customers and insurance companies alike. And because it's Volvo, our global service organization can guarantee the best possible support with competent personnel and the right equipment.

Volvo makes fire safety even safer

Safety has always been a top priority for Volvo and during recent years we have significantly reduced the risk for leakage of flammable liquids and lowered the working temperature on the warmest surfaces in the engine compartment. Now we can offer you a factory installed fire suppression system built entirely of trusted components and with the quality you expect from Volvo.

Up to the task

The greatest fire hazards for a wheel loader are the engine, hydraulics, fuel and electrical system. Fires are usually intense and difficult to put out with hand-held extinguishers and a fast spreading fire in a wheel loader can cause large and costly damage not just to operator and machine, but to the work site as well. That's why insurance companies demand that machines working in hazardous environments and with flammable materials such as peat, wood chips, forestry, paper and petroleum; be equipped with flame retardant systems. Volvo's new fire suppression system meets these strict demands and helps provide an effective protection against catastrophe.

The Volvo advantage

Compared to a third party system, there are many advantages to a Volvo factory installed system. Nozzles are strategically positioned for the best possible effect and the sprinkler system is mounted so as not to interfere with regular service and maintenance. The entire system consists of trusted and

proven components for higher reliability and functionality. Further, unlike bolt-on third party systems, we test our fire suppression system on our own machines.

Gentle on the machine

The system's firefighting agent is an efficient wet chem (liquid) that is gentle on the machine, making cleanup less complicated and repair costs lower as compared to systems employing dry chem (powder). That means the machine will be back in production faster. When the ignition is turned off or the machine is idling with the parking brake engaged, the system is fully automatic in order to hinder the fire spreading. Once the machine is in operation, the operator receives information via the alarm and control panel and then can choose to activate the system with the emergency switch or by use of the control panel. Should the operator choose the latter, the engine will continue to run so the operator can move the machine in order to safeguard buildings in the area.

No two fires are alike

Fire is an unpredictable phenomenon and no two are alike. It's important to point out that this is a fire suppression system whose primary purpose is to give the operator time to reach safety and if possible keep the fire from spreading further. In most cases, the system will completely extinguish the fire.



A FULLY INTEGRATED SYSTEM

Compared to a third party system, there are many advantages to a Volvo tailor made factory installed fire suppression system. The nozzles are strategically positioned for the best possible effect and the system is tested on our machines.

Wet chem system (liquid), not aggressive as dry chem (powder)

**20 litre single tube (L150F-L220F)
15 litre single tube (L60-L120F)**

Factory installed

Tailor made for the Volvo engine compartment

Heat sensitive line detector



Up to 16 nozzles on the sprinkler circuit

Automatic and manual activation

Audible alarm with integrated strobe light

Safety level fulfill SBF 127 for construction machines (Swedish Fire Protection Association)

Automatic main switch and engine shut down - high safety

A RELIABLE SYSTEM THAT MEETS ALL DEMANDS



Emergency stop and control panel

Activation of the emergency stop shuts down the engine and main electric power, engages the parking brake and – if fire is detected – activates the sprinkler system.

Manual activation button

Activation of the sprinkler system via the manual activation button can be initiated at any time, even when the machine is not in operation and if the machine's electrical power supply is turned off.

Sprinkler circuit with up to 16 nozzles

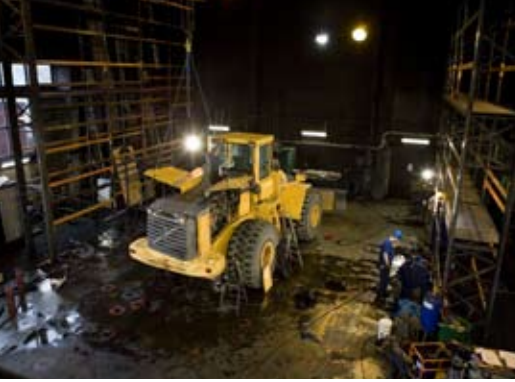
The Volvo fire suppression system is a stainless steel sprinkler circuit, tailor made for the Volvo engine compartment. It contains up to 16 nozzles and is available for L60F – L220F. It is able to detect fire and heat thanks to a parallel detector circuit that can automatically activate the sprinkler system.

Audible alarm with integrated strobe light

The siren/strobe light is activated when fire is detected. The firefighting agent is wet chem.

Brackets for handheld fire extinguishers

Brackets are provided on each of the front fenders to fix hand-held fire extinguishers. For added safety, it is recommended that this system supplements the installed sprinkler system. Further, according to SBF 127, two 6 kg fire extinguishers are required for work in fire-hazardous conditions and environments.





Volvo Construction Equipment is different. Our machines are designed, built and supported in a different way. That difference comes from an engineering heritage of over 175 years. A heritage of thinking first about the people who actually use the machines. About how to help them be safer, more comfortable, more productive. About the environment we all share. The result of that thinking is a growing range of machines and a global support network dedicated to helping you do more. People around the world are proud to use Volvo. And we're proud of what makes Volvo different – **More care. Built in.**



Not all products are available in all markets. Under our policy of continuous improvement, we reserve the right to change specifications and design without prior notice. The illustrations do not necessarily show the standard version of the machine.

VOLVO

Volvo Construction Equipment
www.volvoce.com

PUB 21A1006050
2010-02
Volvo, Global Marketing

English (Global)
WLO