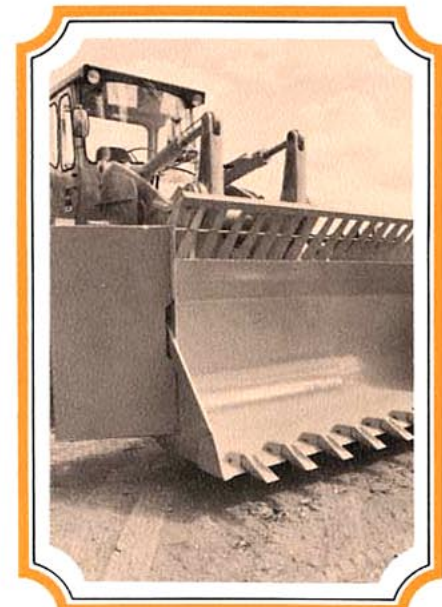
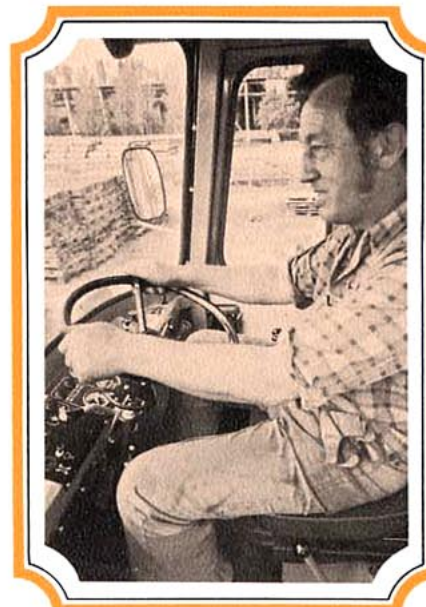
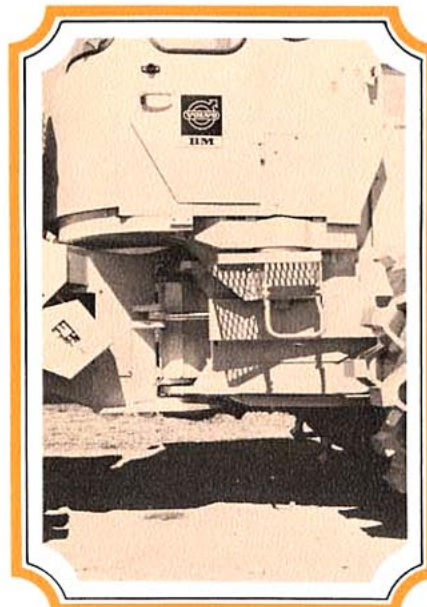
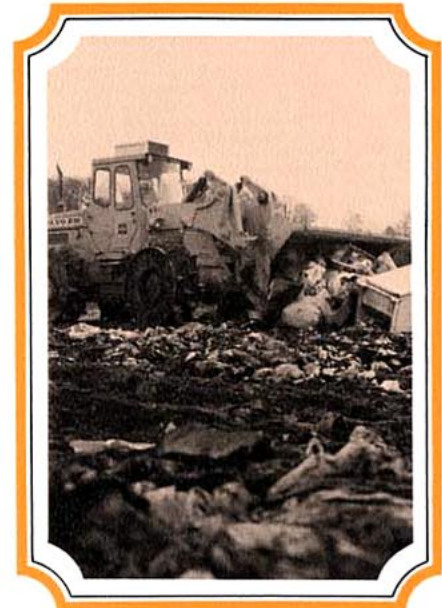
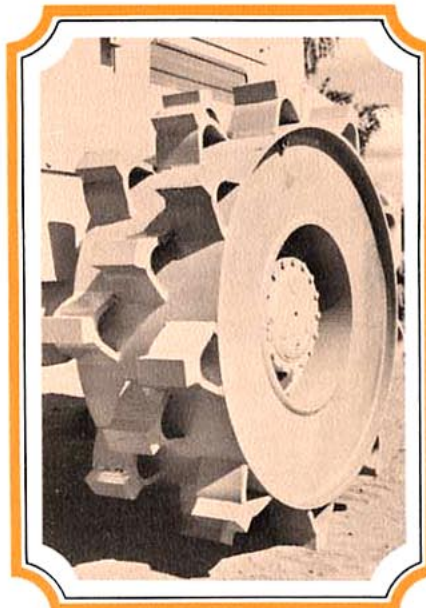
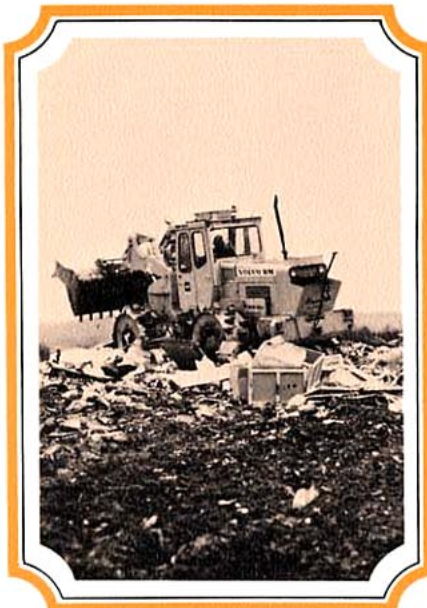


VOLVO BM

846 COMPACTOR

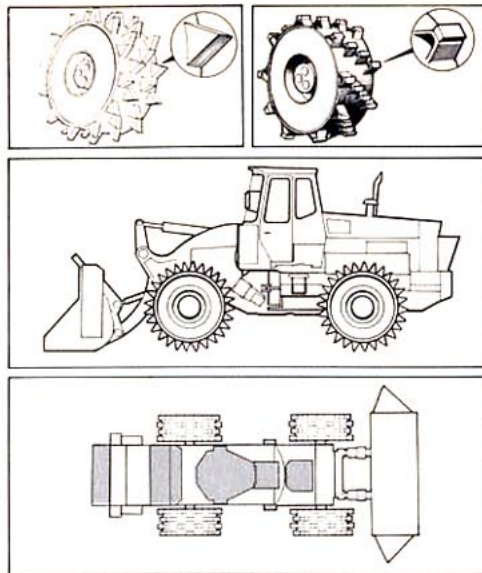


The cab is spacious, with large windows and an efficient heating and ventilation system. Particular attention has been paid to the insulation and suspension of the cab to achieve optimum sound-proofing.



The Volvo BM 846 – an efficient and economical compactor

The Volvo BM 846 can handle the toughest jobs. Its 110 hp DIN (81 kW) engine, its well-balanced transmission and long wheelbase, give it an outstanding operating ability for a machine of its class. The 846 compactor is designed to level and compact refuse and waste from average size towns, and is highly versatile, not only in moving, breaking up, and compacting the waste, but also in digging up, carrying and spreading the covering material. The machine's large, all-welded wheels, and heavy-duty cover plates fitted underneath and on the sides, provide excellent protection when working on hard, heavy materials. A very comfortable cab allows the operator to work with greater efficiency, while articulated steering and a stable loader unit give the machine first-class manoeuvrability. The Volvo BM 846 compactor, therefore, meets the high demands of efficient, economical compacting.



Each wheel consists of an all-welded drum complete with compacting pads. There are two types of pads: pointed (left inset); and U-shaped (right inset). The choice of pad is determined by the nature of the work and conditions at the tip.

Protective plates (shown in grey on the drawing) are fitted over all vulnerable parts.



TECHNICAL DATA VOLVO BM 846 COMPACTOR

Weight

Total weight with pointed pads 12200 kg (26900 lb)

Engine

Type Volvo D60A
6-cyl., direct injection
Output DIN 81 kW at 40 rev/sec
110 hp at 2400 rev/min
Torque DIN 364 Nm at 26.5 rev/sec
268 ft.lb at 1600 rev/min
Bore × stroke 98.43 × 120 mm
(3.875 × 4.72 in)
Displacement 5.48 l (334 cu.in)
Specific fuel consumption DIN 2.50 g/kWh at 26.5 rev/sec
184 g/hph at 1600 rev/min

Electrical system

Voltage 24 volts
Alternator 700 watts
Starter motor 3 kW (4 hp)
Battery capacity 96 Ah

Torque converter

Type Single-stage
Conversion ratio 3.3:1

Transmission

Type Power shift
Number of speeds 4 forward
4 reverse

Axles

2- or 4-wheel drive
Fully floating axles with planetary gears in hubs
Differential lock
Rear axle oscillation: 30°

Brakes

Pneumatic-hydraulic disc brakes in dual circuit system
Mechanical parking brake

Steering system

Hydrostatic articulated steering
Steering angle ± 40°
Turning radius 5200 mm (205 in)
Pump capacity 75 l/min (16.5 Imp.gal/min)
Working pressure 130 kg/cm² (1850 lb/sq.in)

Wheels

Drum width 570 mm (22 in)
Drum diameter 1200 mm (47 in)
Pad height 135 mm (5.3 in)

Breakout force

75700 N (17000 ft.lb)

Hydraulic system

Pump, type gear pump
Capacity 220 l/min (48 Imp.gal/min)
at 2400 rev/min
Working pressure 120 kg/cm² (1700 lb/sq.in)

Cylinder dimensions:

Lift cylinders
Bore/stroke 130/950 mm (5.1/37.4 in)
Tilt cylinders
Bore/stroke 110/490 mm (4.3/19.3 in)

Oil and fluid volumes

Cooling system 26 l (5.7 Imp.gal)
Engine lubricant oil 15 l (3.3 Imp.gal)
Fuel tank 195 l (42 Imp.gal)
Hydraulic system 130 l (28.5 Imp.gal)

Standard equipment

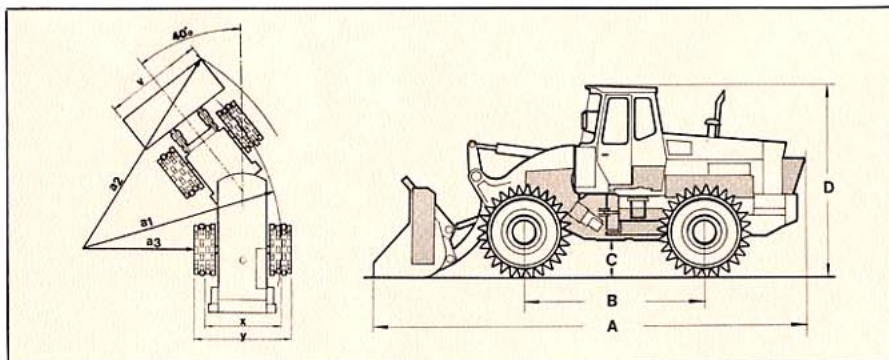
Ashtray
External rear-view mirrors
Lights
main beams, high/low (2)
working beams, front, (2)
working beams, rear, (2)
parking lights
side lights
brake lights
Fuel gauge
Cigarette lighter
Differential lock
Anchor for safety belt
Utility box in cab
Master switch
Impact-tested safety cab
Cab heating system with fresh air intake and defroster
Air cleaner indicator
Instrument panel with symbols
Pilot lamps for:
air brakes
working beams
battery charge
high beam

Direction indicators

Air cleaner (paper type) with pre-cleaner and coarse filter
Silencer
Control valve, three sections
Horn
Seat springs
Inspection lamp socket
Trailer outlet
Sun visor
Safety start
Temperature gauges for:
transmission fluid
coolant
Hour counter
Compressor
Pressure gauges for:
oil pressure, engine
oil pressure, hydraulic transmission
air pressure, brakes
Hazard flashers with pilot lamp
Warning lamp for parking brake
Tool kit
Wipers for:
windscreen
rear window
Alternator

Optional equipment

Working light, front, low-level, (1)
Rear-view mirror, internal
Fuel filter (Tropik)
Underbody protection plates
Towhook
Tinted glass in cab
Inspection lamp
Speedometer (including mileage recorder)
Cab ventilator
Air conditioner
Lifting lugs
Engine heater
electric
LP gas
Attachment bracket
mechanical
hydraulic
Ring pumping system
Lines for:
3rd hydraulic function
4th hydraulic function
Bucket indicator
Protective grilles for working lights
Trailer outlet
Safety belt
Roof hatch
Rotating warning beacon



Dimensions

A	overall length	6750 mm (266 in)
B	wheelbase	2860 mm (113 in)
C	ground clearance	480 mm (18.9 in)
D	height	3000 mm (118 in)
Y	width over wheels	2400 mm (94 in)
V	width over bucket	2500 mm (98 in)
	width over bucket with wings	3500 mm (138 in)
X	track	1960 mm (77 in)
a1	turning radius	4910 mm (193 in)
a2	swept radius without wings	5640 mm (222 in)
a3	inner radius	2700 mm (106 in)

Specifications and design are subject to alteration without notice.

VOLVO BM

VOLVO BM AB ESKILSTUNA SWEDEN

Ref.No. 21 1 669 1322
ENGELSKA
Production group for basic printed matter Volvo BM
Photo Studio Roland