

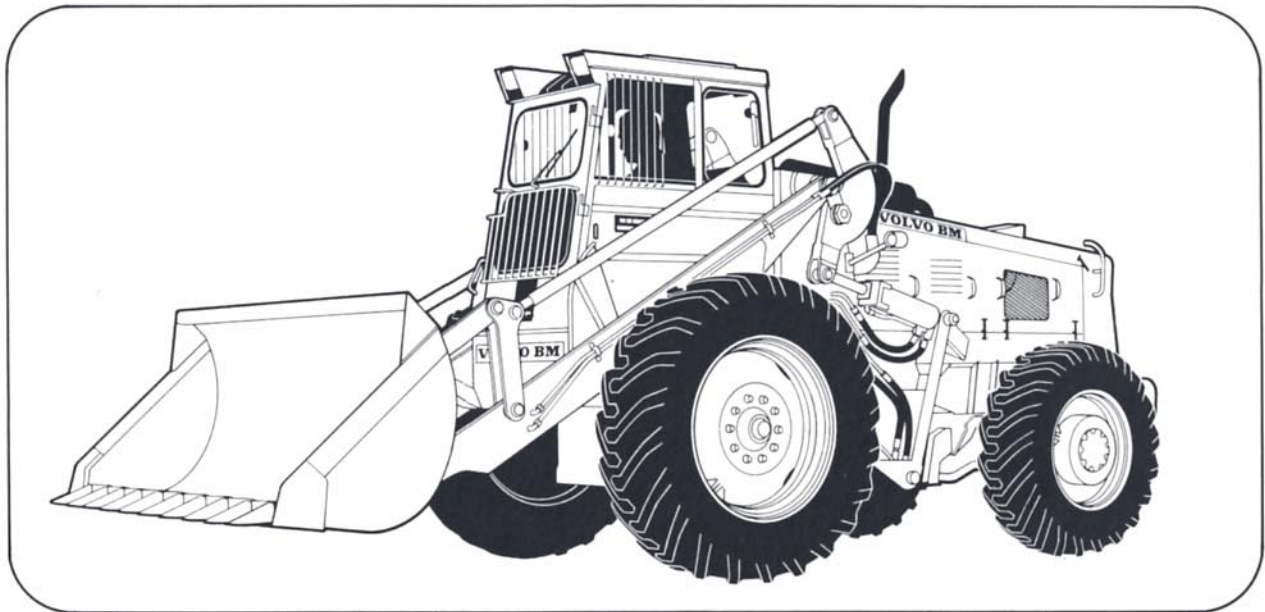
# **VOLVO BM**

## **ALLROUND LOADER 841**



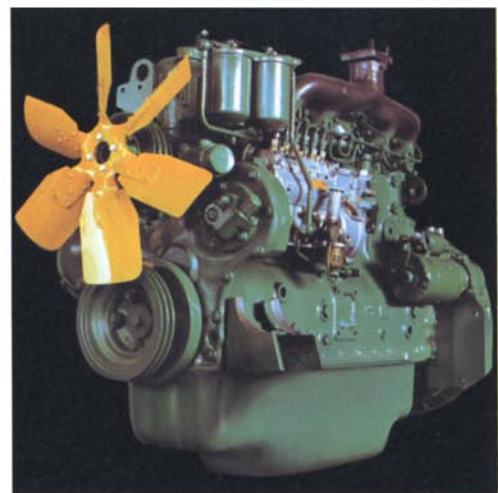
# VOLVO BM 841 — the big Allrounder

The VOLVO BM 841 is the largest machine in VOLVO BM's Allrounder series—standard-equipped, it weighs about 10 tons and is equipped with a 1.3 m<sup>3</sup> (1.7 yd<sup>3</sup>) standard bucket. Backed up by many years of experience from a wide range of applications in countries throughout the world, the 841 has continually been refined and improved in function and quality. The result is a loader with excellent reliability and an outstanding capability to perform a wide variety of different jobs. The powerful engine, torque converter, power-shift transmission and large wheels endow the machine with excellent tractive power. The loading unit lifts high and reaches far and can be equipped with many different attachments. With the VOLVO BM 841, you have a machine with the capacity for both bucket loading and materials handling work.



## Tough VOLVO engine

The 841 is powered by the 6-cylinder VOLVO D50B diesel engine, which develops 82.4 kW SAE (112 hp). Torque is high throughout the entire range of rpm, providing good lugging power. The engine is designed to handle heavy loads with a good margin. The crankshaft is carried in 7 bearings with large bearing surfaces and is very well balanced. The cooling system is so effective that the engine can run with a full load at an outside temperature of up around +55°C. Furthermore, the engine has equipment which performs high-grade cleaning of fuel, oil and air, making it reliable and long-wearing.



The VOLVO D50B diesel engine.

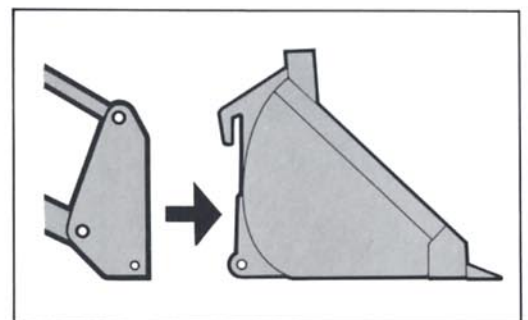


### Snap-on coupling and a range of attachments

The 841 is furnished with an attachment bracket which permits attachment changes in the space of about one minute, to adapt the machine for many different duties.

The attachment range includes about 70 different implements grouped under the general headings of buckets, grapples, timber and pulpwood implements, crane jibs, dozer blades, snow-removal equipment and a number of special attachments. This enables VOLVO BM loaders to handle more jobs than other loaders in their class.

In cases where attachments are changed frequently, the machine can be equipped with a hydraulic attachment bracket. The driver can then manage the entire change from his position in the cab.



The snap-on coupling permits attachment changes in the space of about one minute.

## The VOLVO BM 841 is made for heavy duty at a variety of tasks

The VOLVO BM 841 is suited to most jobs due to its tough, stable design, coupled with an ability to manoeuvre in cramped quarters, a small turning radius, fingertip-ease hydrostatic steering and power-shift transmission. The driver has a clear view and is able to work with precision from the safe cab, thanks to its up-front position, close to the work which is being performed.

### High lift and generous outreach

The special design of the loading unit with high mounting affords complete parallel side-arm action, an outreach of 1.4 m (4.5 ft) and a lifting height under level bucket of 3.6 m (nearly 12 ft).

### A machine for all seasons and types of work

You can choose from among the 70 different attachments to find the ones which are just right for your needs. The 841 is a versatile machine which can handle a wide variety of jobs, so it often takes the place of different types of specialist machines.



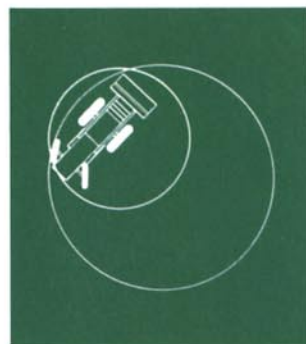
With the generous outreach, the driver does not have to sneak up close to the truck to tip the bucket. In addition, it is easy to distribute the load evenly over the width of the truck. The long outreach also enables the 841 to load and unload material from one side of railway wagons and truck platforms.



The power-shift transmission has two speed ranges in both forward and reverse, providing four speeds in each direction. The gear lever is easy to operate with short travels between the gears and distinct positions. The safety start prevents the machine from being started in gear.



On soft, slippery ground, ground-contact pressure and a good distribution of tractive power are decisive in determining mobility. The 841 performs well under such conditions due to good weight distribution, large wheels, 4-wheel drive and differential lock.



The 841 has a large lock-to-lock steering arc, making it easy to manoeuvre and agile in cramped quarters. Turning radius without steering brakes... 5.5 m (18 ft) Turning radius with steering brakes... about 3.5 m (about 12 ft)

## Fast, economical and comfortable

The VOLVO BM 841 is a fast machine which, with its big wheels, powerful engine and well-balanced transmission, provides excellent "go-anywhere" mobility and adequate penetrating force in hard materials. Since it is also adaptable to perform diverse materials handling jobs in the face of the stiffest competition, the VOLVO BM 841 is a safe and economical investment.

### **The VOLVO BM 841 ...**

... is versatile owing to the wide range of attachments and the snap-on coupling permitting quick changes.

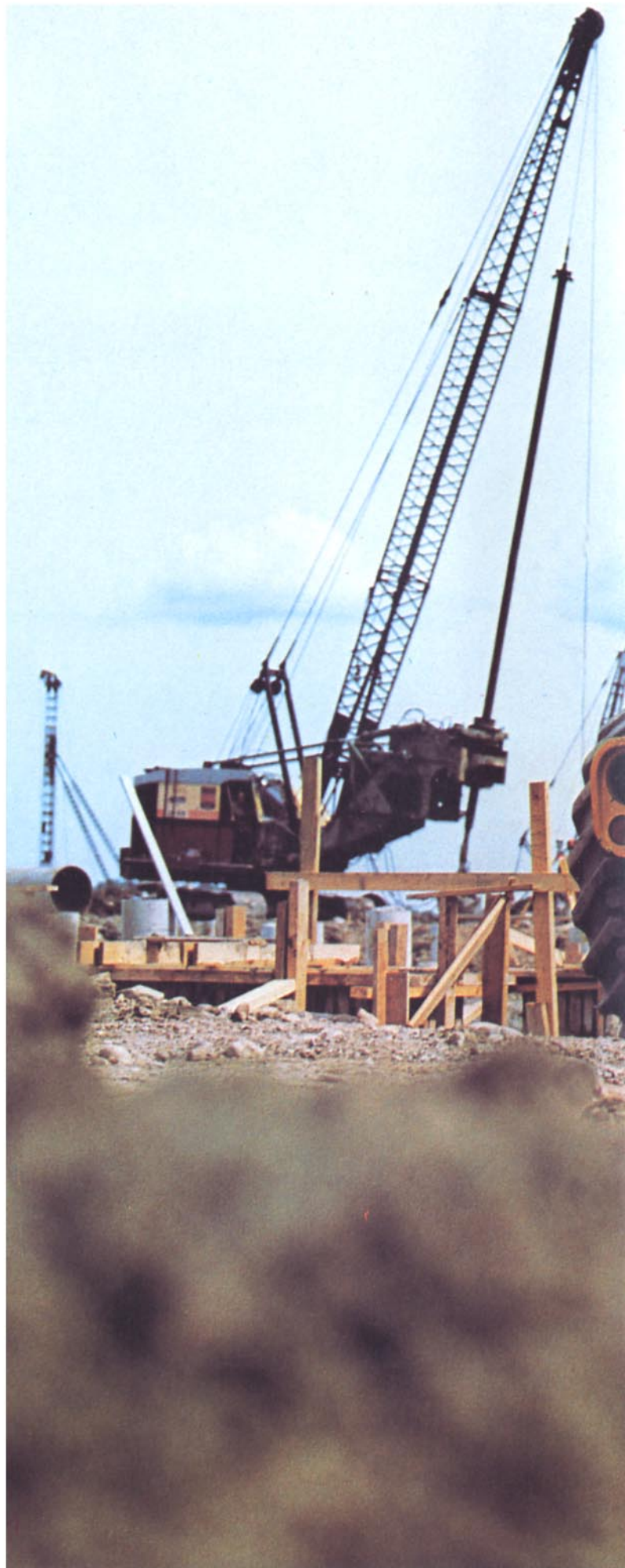
... is equipped with a torque converter and a power-shift transmission for quick and easy shifting without clutching and automatic boost of tractive power under increasing resistance.

... is powered by a sturdy 6-cylinder VOLVO diesel engine—economical and durable.

... has a well-designed loading unit which combines generous outreach and lifting height, parallel side-arm action and favourable bucket angles.

### **Well-designed safety cab**

The driver sits comfortably in the snug safety cab and has a clear view through the spacious windows. The cab is rubber-mounted, weatherproof and well sound-insulated. Standard equipment includes a heavy-duty heater with two fan speeds. For use in hot climates, the cab can be equipped with a roof-mounted cab ventilator which provides a pleasant flow of air. The seat, upholstered in soft nylon pile, can be adjusted vertically and horizontally which, along with adjustable springs and backrest angle, permits adaptation to individual comfort needs.





VOLVO  
BM

L.M 841

VARNING  
for backande maskin



VOLVO BM 841, the big allround loader which combines capacity and strength with versatility, thanks to a comprehensive range of attachments. The 841 is therefore a machine which is as good at bucket loading as it is at materials handling.

**VOLVO BM**  
VOLVO BM AB ESKILSTUNA SWEDEN

Ref. No. 21 1 669 1005  
ENGELSKA