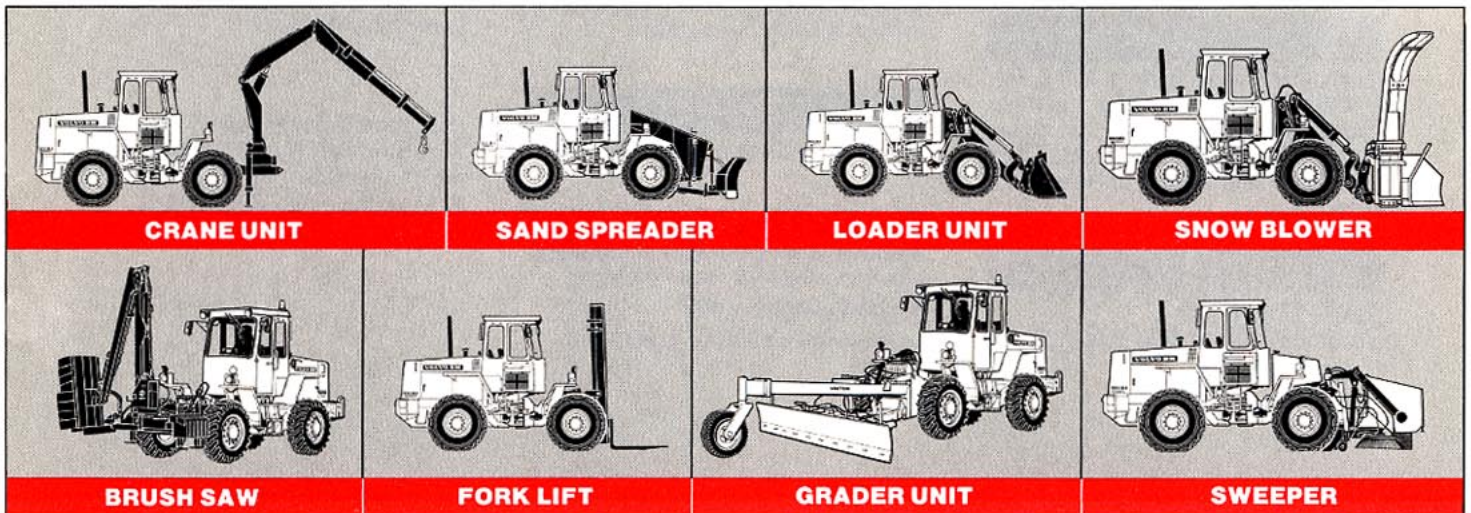


# **VOLVO BM 4200 B**

## **CASSETTE SYSTEM**

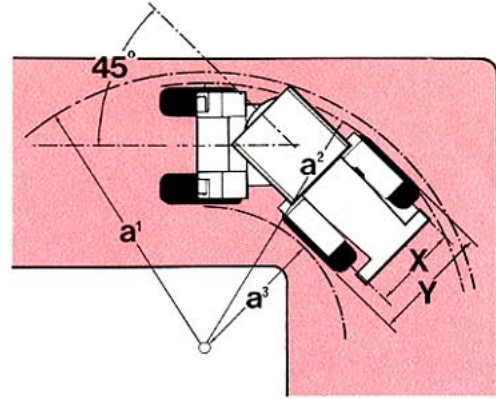
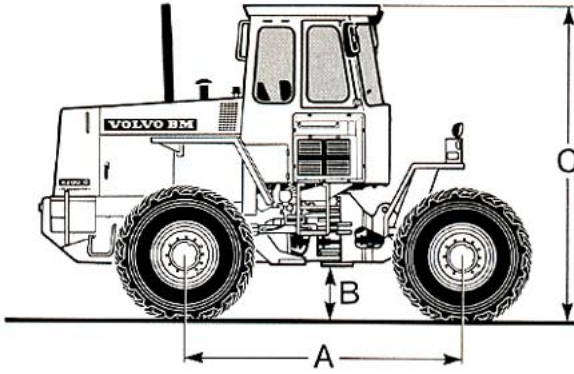


The Volvo BM 4200 B cassette system is designed to enable one machine to change frequently from one specialist handling task to another, retain high capacity levels on each and every application and provide the operator with a superb working environment whilst he's doing it.

The cassette system is a logical extension of Volvo BM's established all-rounder philosophy. Where, instead of having a loader system fitted with a snap-on coupling to accept a range of interchangeable attachments, a complete purpose-designed cassette is slotted onto the front frame of the basic machine. Changing from one cassette to another is achieved in less than ten minutes, giving you a machine that can perform entirely different functions with great efficiency, while retaining all the good mobility and stability characteristics of the articulated 4200 B loader.



## DIMENSIONS 4200 B CASSETTE SYSTEM



A = 2 700 mm (8 ft 10 in)	a <sup>2</sup> = 4 260 mm (14 ft)
B = 355 mm (1 ft 2 in)	a <sup>3</sup> = 2 280 mm (7 ft 6 in)
C = 2 905 mm (9 ft 6 in)	X = 1 600 mm (5 ft 3 in)
a <sup>1</sup> = 4 310 mm (14 ft 2 in)	Y = 1 980 mm (6 ft 6 in)

Operating weight: 5 550 kg (12 235 lb)

### ENGINE

Volvo BM D 45 B

**Flywheel rating:** 62 kW at 36.7 rps  
DIN 70020 (84 hp at 2 200 rpm  
DIN)

**Gross rating:** 66 kW at 36.7 rps  
SAE J 270 (90 hp at 2 200 rpm  
SAE)

**Max. torque:** 310 Nm at 20 rps DIN  
70020 (228 lbf ft at 1 200 rpm DIN)  
315 Nm at 20 rps SAE J 270 (232  
lbf ft at 1 200 rpm SAE)

**Air cleaning in three stages:** 1.  
Cyclone precleaner with exhaust  
ejection 2. Paper filter 3. Catch-all  
safety filter.

### ELECTRICAL SYSTEM 24 V

**Central warning lamp for the fol-  
lowing functions:** (For certain  
markets only) Engine oil pressure.  
Brake pressure. Parking brake. En-  
gine temperature. Transmission tem-  
perature.

### TORQUE CONVERTER

**Type:** Single-stage

**Torque multiplication ratio:** 3.1:1

### TRANSMISSION

**Type:** Power-shift

**Designation:** Volvo BM HT 90

Number of gears forward/reverse 4/4.  
Automatic Power Shift as option.  
*Eight speed transmission as option.*

### AXLES

Volvo BM. Fully floating halfshafts  
with planetary hub reductions.

### BRAKES

**Service brakes:** Fully hydraulic disc  
brakes, dual circuit system.

### TYRES

14.9—24. Alternatively 15.5—25

### STEERING

Load-sensing hydrostatic steering.

**Steering angle:** ±45°

**Lock-to-lock turns of wheel:** 4.2

### HYDRAULIC SYSTEM

The hydraulic system is equipped  
with a third hydraulic control as  
standard. A fourth hydraulic control  
can easily be installed.

Certain cassette versions require  
dual-circuit hydraulics.

### CAB

Tested and approved as a safety cab  
in accordance with Article 3 Section  
8 of the Swedish Environment Pro-  
tection Act and meets ISO  
3471-1980. ROPS (SS783) and  
ISO 3449-1980 FOPS (SS782) as  
well as SS/ISO 6055 "Overhead  
guards for lift-truck".

*For further information, see data  
brochure Ref. No. 21 1 669 1702,  
which contains detailed specifica-  
tions on the Volvo BM 4200 B.*

# VOLVO BM

VOLVO BM AB ESKILSTUNA SWEDEN

*Under our policy of continuous product improvement, we reserve the right to change specifications and design without prior notice. The illustrations do not necessarily show the standard version of the machine.*

Ref.No. 21 1 669 1701  
ENGELSKA  
Production group for basic printed matter: Volvo BM  
Photo: Foto Consult  
Illustrations: Ulf Almqvist