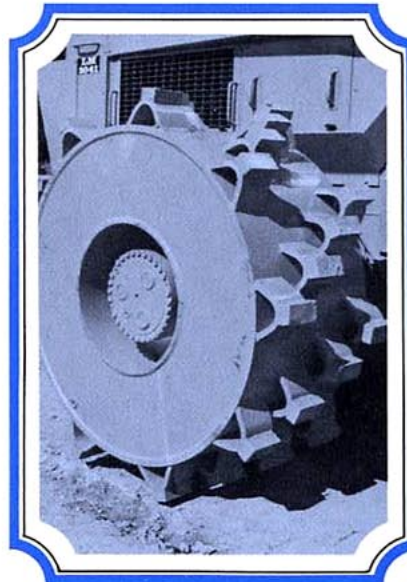
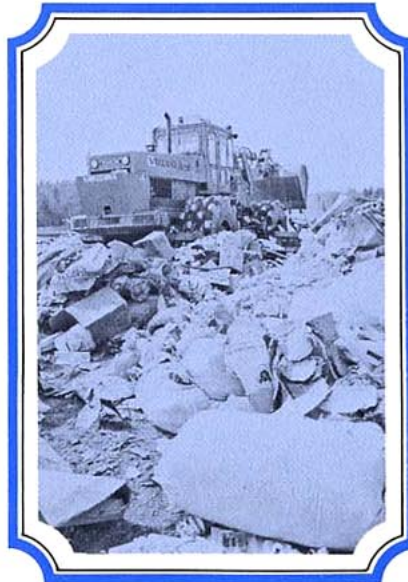
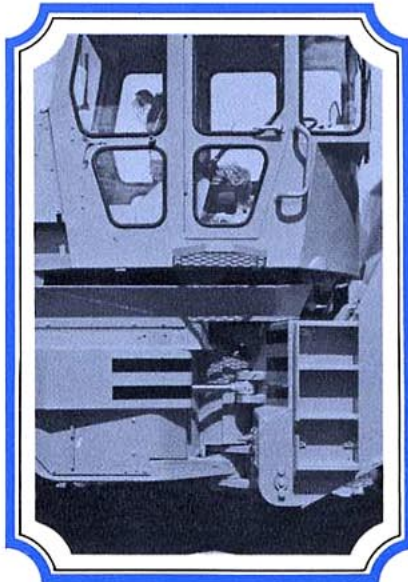
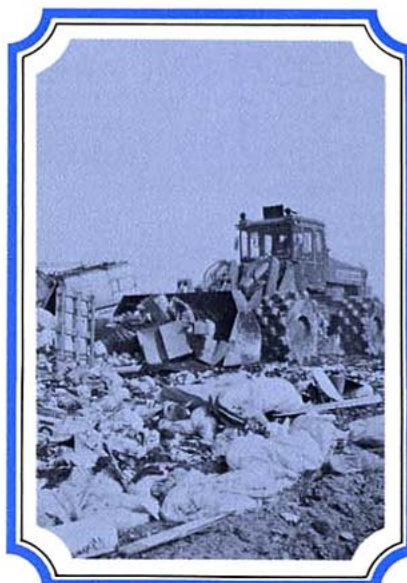
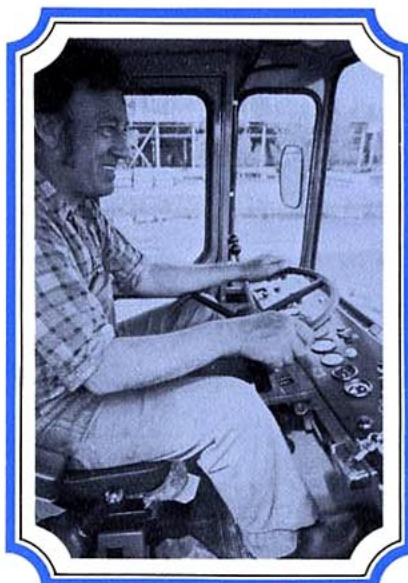


# **VOLVO BM**

## **1641 COMPACTOR**







The safety cab of the 1641 is spacious and comfortable. Effective insulation and rubber pads between frame and cab keep noise level inside the cab extremely low.



# The Volvo BM 1641 – a high-capacity compactor

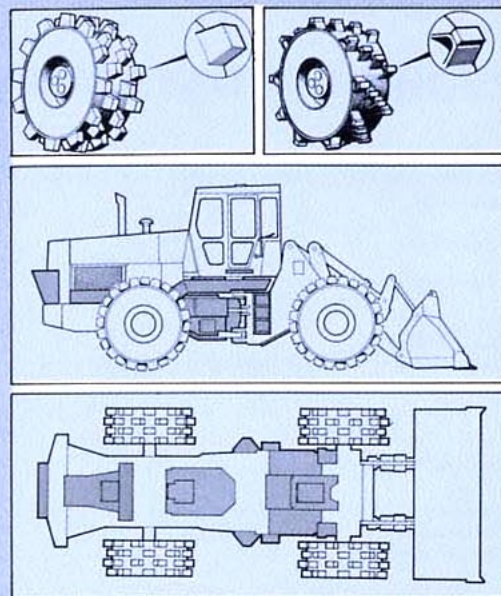
The Volvo 1641 compactor is designed for levelling and compacting refuse and waste collected from large towns and cities. The machine is very versatile, enabling waste to be moved, broken up, and compacted. It can also be used to dig up, carry, and spread material for covering the waste.

The compactor has large, all-welded wheels, and heavy-duty cover plates are fitted underneath and along the sides of the vehicle to give protection during work with hard, heavy materials.

The machine's long wheelbase and its even weight distribution give excellent stability to a vehicle that has such ample lifting force and long reach. The sound-insulated safety cab provides the operator with comfortable working conditions. The Volvo BM 1641 compactor is powerful, efficient, easy to service, and thoroughly reliable on sites where the work is demanding.



Heavy-duty wheel  
cleaners give more  
effective compacting.



Each wheel consists of an all-welded drum complete with compacting pads. These pads are of two types: truncated pads (left inset); or U-shaped pads (right inset). The choice of pad shape is determined by the type of work to be done and the conditions at the site. The front and rear axles are of heavy-duty design.

Cover plates (in grey on the drawing) protect all vulnerable parts





# TECHNICAL DATA VOLVO BM 1641 COMPACTOR

## Engine

Volvo TD 100A, 6-cyl., direct injection	
Output DIN	151 kW at 36.5 rev/sec 205 hp at 220 rev/min
Torque DIN	774 Nm at 23.5 rev/sec 578 ft.lb. at 1400 rev/min
Bore × stroke	120.65 × 140 mm (4.72 × 5.5 in)
Displacement	9.6 l (586 cu.in)
Specific fuel consumption DIN	225 g/kWh at 23.5 rev/sec 165 g/hph at 1400 rev/min

## Electrical system

Voltage	24 volts
Alternator	1260 watts
Starter motor	4.4 kW (6 hp)
Battery capacity	135 Ah

## Torque converter

Type	Single-stage
Torque ratio	2.8:1

## Transmission

Type	Power-shift
Gears	3 forward 3 reverse

## Axles

2- or 4-wheel drive  
Fully-floating axles with planetary gears in hubs  
Rear axle oscillation 34°

## Brakes

Air brakes in dual circuit system  
Mechanical parking brake

## Steering system

Hydrostatic articulated steering	
Steering angle	± 37.5°
Turning radius	6300 mm (20 ft. 7 in)
Pump capacity	160 l/min (35 Imp.gal/min)
Working pressure	10.0 MPa (1422 lb/sq.in)

## Capacity data

Total weight with truncated pads	23000 kg (50700 lb)
Total weight with U-shaped pads	24000 kg (53000 lb)
Breakout force	12500 kgf (27000 ft.lb)
Width over wheels (Y)	2910 mm (115 in)
Width over bucket (V)	3100 mm (122 in)
Track (x)	2310 mm (91 in)
Swept radius (a <sub>1</sub> )	7100 mm (280 in)
Turning radius (a <sub>2</sub> )	6300 mm (248 in)

## Wheels

Drum width	670 mm (26 in)
Drum diameter (excluding pads)	1325 mm (52 in)
Pad height	140 mm (5.5 in)
Recommended travelling speed	8.0 km/h (5 mph)

## Hydraulic system

Pump type	gear pump
Capacity	160 l/min (35 Imp.gal/min) at 37 rev/sec (2200 rev/min)
Working pressure	14.0 MPa (2000 lb/sq.in)

## Cylinder dimensions:

Lift cylinders	
Bore stroke	180/895 mm (7/35 in)
Tilt cylinders	
Bore stroke	150/845 mm (5.9/33 in)

## Oil and fluid volumes

Cooling system	60 l (13 Imp.gal)
Engine lubricant oil	31 l (6.8 Imp.gal)
Fuel tank	245 l (53 Imp.gal)
Hydraulic tank	230 l (50 Imp.gal)

## Standard equipment

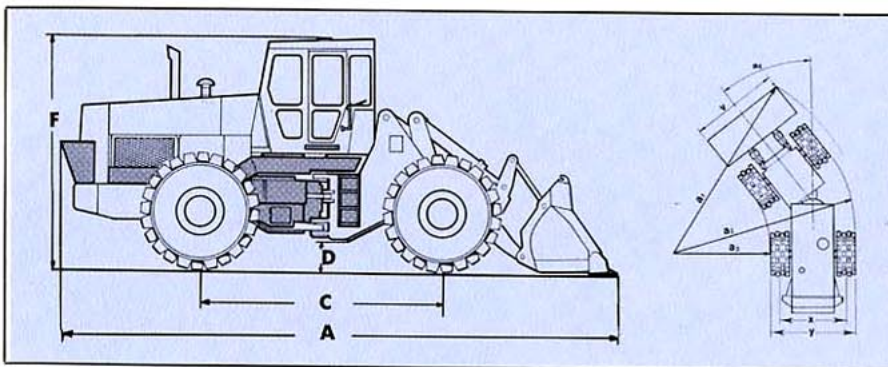
Ashtray  
Rear view mirrors, external 2  
Lights  
front-working beams  
rear-working beams  
tail and brake lights  
main beams, high/low/parking  
cab lighting  
side lights  
Fuel filter  
Fuel gauge  
Cigarette lighter  
Hitch  
Utility box  
Spark-arresting silencer  
Master switch  
Cab  
Cab heater with defroster and fresh air intake  
Instrument panel

## Pilot lamps for:

air brakes  
rear-working beams  
high beam  
flashers  
battery charge  
parking brake  
oil pressure, engine  
Direction indicators  
Air cleaner with ejector-discharge cyclone cleaner  
Automatic lift  
Pressure gauges:  
oil pressure, engine  
oil pressure, hydraulic transmission  
air pressure, brake  
Control valve (single-lever, servo-assisted, 3 sections)  
Ring pumping system  
Horn  
Seat springs  
Automatic bucket  
Roof hatch  
Thermometers:  
hydraulic transmission oil  
engine coolant  
Hour counter  
Compressor  
Tool kit  
Wipers: windscreen  
rear window  
Alternator

## Optional equipment

Working lights, extra to standard fittings  
Exhaust gas cleaner  
Fuel filter, extra to standard  
Valve for third hydraulic function  
Electrical equipment for 4th and 5th hydraulic functions  
Hand brake, air-operated  
Green-tinted cab window glass  
Cab heater, extra to standard  
Cab ventilator  
Engine coolant filter  
Air conditioner  
Heavy-duty air cleaner  
Control lever, line for 3rd hydraulic function  
Engine heater, electric  
Engine heater, LP gas  
Radio  
Attachment bracket, hydraulic lock  
Sun visor  
Safety belt  
Rotating warning beacon, with or without collapsible mounting  
Fire extinguisher  
Wheel cleaners



## Dimensions

A	7950 mm (313 in)
C	3470 mm (137 in)
D	400 mm (16 in)
F	3200 mm (126 in)
X	2310 mm (91 in)
Y	2910 mm (115 in)

Swept radius a <sub>1</sub>	7100 mm (280 in)
Turning radius a <sub>2</sub>	6300 mm (248 in)
Inner radius a <sub>3</sub>	3700 mm (146 in)
Steering angle α	37.5°

Specifications and design are subject to alteration without notice.

# VOLVO BM

VOLVO BM AB ESKILSTUNA SWEDEN

Ref.No. 21 1 669 1321

ENGELSKA

Produktion gruppen för baski-printad matter Volvo BM  
Photo: Studio Roland Foto Consult