

# Zettelmeyer

made in W.-Germany

## Wheel Loader ZL 8 C

Standard Bucket Capacity 0.4 m<sup>3</sup>



Germany's only wheel loader manufacturer with a complete performance range



## Technical description:

- Operating weight 2930 kg (6459 lbs), standard bucket 0,4 m<sup>3</sup> (0.52 cu.yd)
- Economical aircooled Diesel engine
- Central articulating-oscillating joint for high stability and maneuverability
- 100% differential lock, electro-hydraulically actuated in both axles
- Hydrostatic drive reversible under load
- Two quick-change-systems for all applications
- Temperature controlled hydraulic fluid guarantees max. performance under all ambient conditions
- Safety certificate according to german legislation
- Simple service and maintenance



The ZL 8 C economical in all applications.

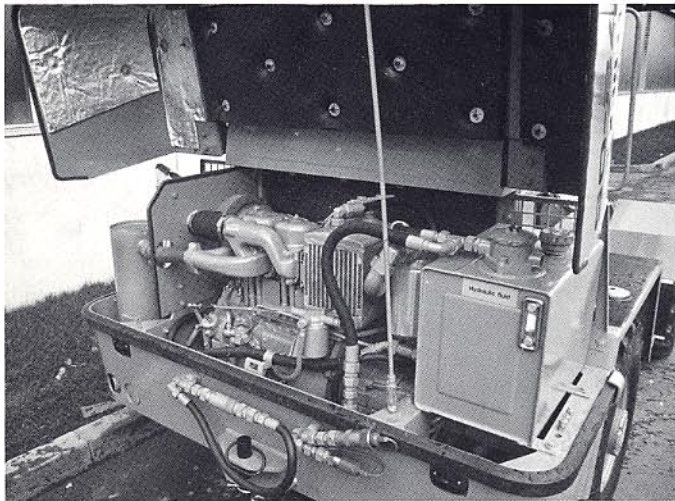
---

### Technical data

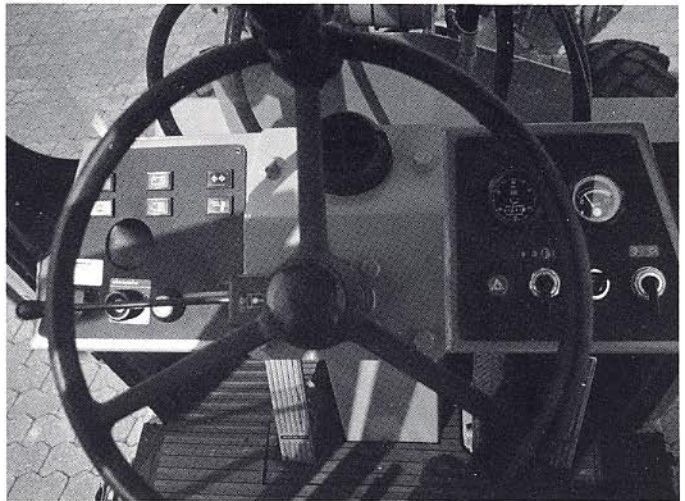
---

<b>Engine:</b>	Deutz, 2-cylinder, 4-stroke Diesel engine, direct injection, aircooled, 26 kW/35 DIN HP at 3000 RPM, tank capacity 45 liters
<b>Transmission:</b>	Hydrostatic transmission, reversible and shiftable (high-low) under load »Inchpedal« – for infinitely variable regulation of speed and rimpull by the hydrostatic system Working speed: up to 9 km/h (5.6 mph) Traveling speed: up to 19 km/h (11.8 mph)
<b>Axles:</b>	Rigid-axles with planetary reduction in wheel hubs, 100% differential lock electro-hydraulically actuated in both axles, width of track: 1340 mm
<b>Brakes:</b>	1. Wear free hydrostatic brake 2. Hydraulic operating brake on rear axle 3. Parking brake
<b>Tires:</b>	10.5–18
<b>Steering:</b>	Central articulation oscillating joint. Hydraulic steering with double acting cylinder, safety steering, articulation: ± 40°, oscillation: ± 12,5°
<b>Hydraulic system:</b>	Gear pump, working pressure 180 bar, maincontrol valve with 2 spools and safety valve one lift and one tilt cylinder, doubleacting roll back angle: max. 60° dump angle: max. 93° dump angle at max. lift: 55° raising time: 6 sec. lowering time: 3,5 sec. hydraulic tank capacity: 45 liters
<b>Electric equipment:</b>	Electric system 12 V, battery 1 x 12 V/88 Ah
<b>Standard equipment:</b>	Soundproofed Rops-cabin, adjustable operators seat, access on both sides. Sliding windows, Safety certificate according to german legislation, tool kit, engine noise reduction
<b>Optional equipment:</b>	Tires 11.5/80–15 15.5/55–R 18 Deutz swirl chamber engine 20,5 kW/28 HP (DIN) at 3000 RPM Double air filter FOPS Detachable cabin High lift boom arm Optional hydraulic circuit front/rear <b>Further Attachments upon request</b>

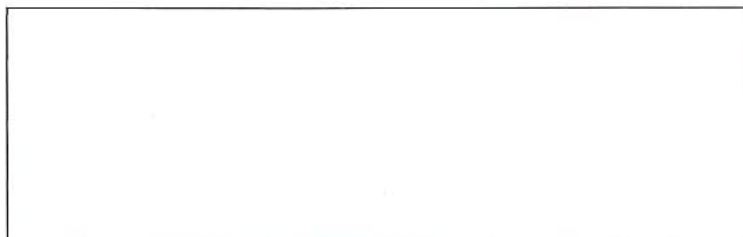




Powerful air cooled Diesel engine for quick and simple service.



The dash bord: Complete instrumentation at a glance.



Zettelmeyer Baumaschinen GmbH, P. O. Box 1340, D-5503 Konz, Germany, Tel. (6501) 840, Tx. 472771

**Zettelmeyer**

THP ZL 8 C Engl. 11.84 G · Subject to change in design, weights and dimensions without notice.