

Zettelmeyer

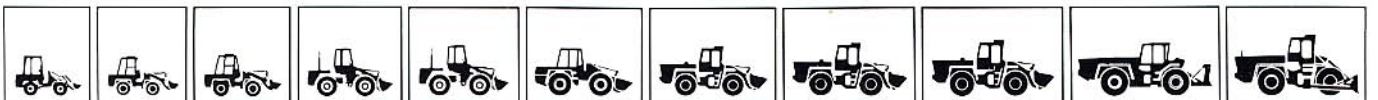
made in W.-Germany

Wheel Loader ZL 601

33 kW/45 HP (DIN) · Bucket capacity 0.5 – 1.5 m³



Germany's only wheel loader manufacturer with a complete performance range



Wheel Loader ZL 601



Engine

Make/Type	Hatz/Diesel 4 stroke
Model	3 L 330 S/3 L 30 C
Output DIN 70020	33 kW/45 HP
at engine speed	3000 rpm
Max. torque	121 Nm
at engine speed	2100 rpm
No. cylinders/configuration	3/in-line
Bore/stroke	95/100 mm
Displacement	2126 cm ³
Combustion system	direct injection
Cooling	air

Electrics:	
battery	12 V/88 Ah
alternator	14 V/55 A
starter motor	2.7 kW/12 V



Transmission

Hydrostatic transmission, gear selection low/high and reversing under load.

Inching pedal for continuously variable speed control.

	Speeds (with standard tyres)	
	forward	reverse
Off-road	10.5	10.5 km/h
On-road	20	20 km/h



Axles

Four-wheel drive by 2 DB portal axles.

Ground clearance	450 mm
Track	1382 mm
Oscillation at wheel, max.	200 mm

100% differential lock on both axles.

Reduction:	
transmission	i = 3.466
axle	i = 8.1
total	i = 28.07



Brakes

1. Service brake: hydrostatic transmission acting on all four wheels
2. Service brake: central disc brake acting on all four wheels
3. Parking brake: drum brakes acting on all four wheels



Tyres

Standard	12.5 – 20	rim	11.00 x 20
Optional	12.5 – 18		11.00 x 18
	14.5 – 20		11.00 x 20
	15.5/55 R 18		11.00 x 18

You are urged us in selecting optimum tyres for particular operating conditions.



Steering

Central articulating oscillating-joint

Central articulation	± 38°
Oscillation	± 10°

Hydraulic steering via one double-acting steering cylinder
bore/stroke 63/300 mm

Gear-type tandem pump
capacity at 3000 rpm 24 l/min

Relief-Pressure 150 bar



Hydraulics

1 double-acting tilt cylinder
bore/stroke 80/440 mm

2 double-acting lift cylinders
bore/stroke 75/510 mm

Gear-type tandem pump
capacity at 3000 rpm 42 l/min

Relief-Pressure 200 bar

Common tank for working hydraulics, drive and steering is pressurized (0,3 Bar).

Thermostat controlled oil circuit with integrated cooling system and electrically switched cooling fan.

Filters can be changed without requiring the tank to be emptied.

Lift time (loaded) 6.5 sec.

Lowering time (empty) 3.0 sec.

Dump time 1.8 sec.

Roll-back time 1.0 sec.

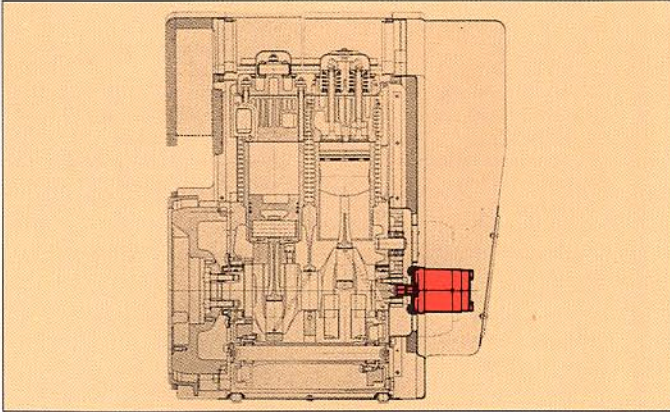


Service Data

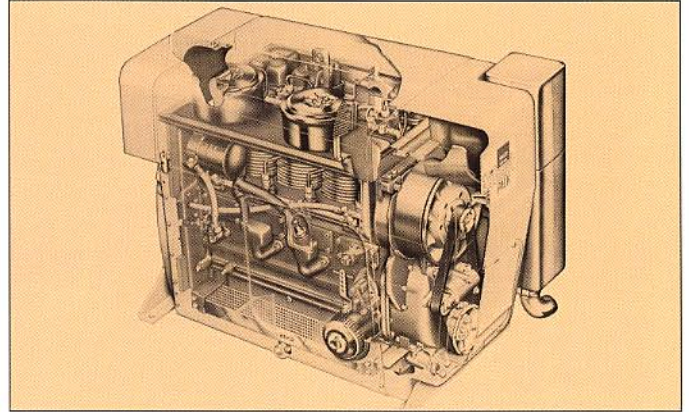
Fuel tank	60 l
Engine	7.5 l
Hydraulic system incl. tank	50 l
Front axle	3.5 l
Rear axle	7.5 l
Brakes	1.0 l

A powerful concept at extremely low noise.

Designed for extra comfort and environmental compatibility – the noise reduced (ZL 601) and the encapsulated (ZL 601 S) both air-cooled 3 cylinder power units developing 33 kW/45 HP at 3000 rpm.

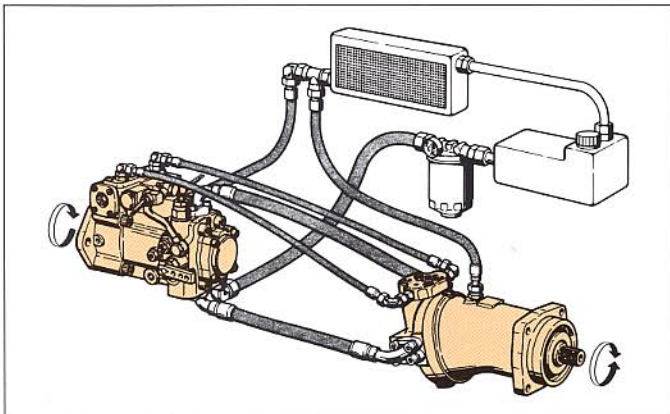


Noise emitting components such as the pumps for the steering and working hydraulics are incorporated in the capsule.

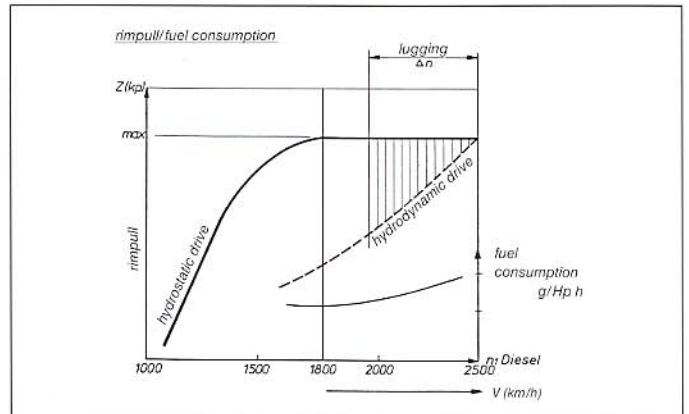


Designed for noise levels of less than 74 dB (A) outside and less than 85 dB (A) in side the cab.

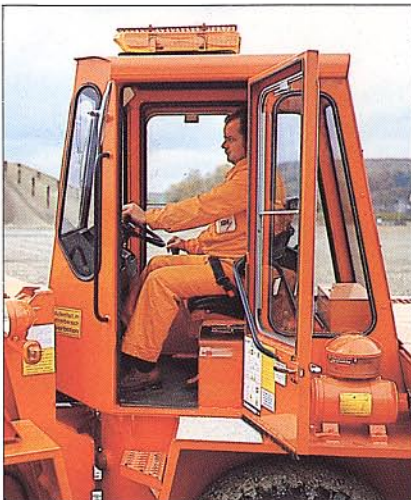
Maximum cost effectiveness with minimum fuel consumption through hydrostatic transmission



Powerful, automatic, hydrostatic transmission saves fuel, is cost effective and permits easy servicing. Thermostat monitored flow control does away with the fuel guzzling, low output cold starting phase.



Human engineered safety cab and low-maintenance design guarantee optimum ease of operation



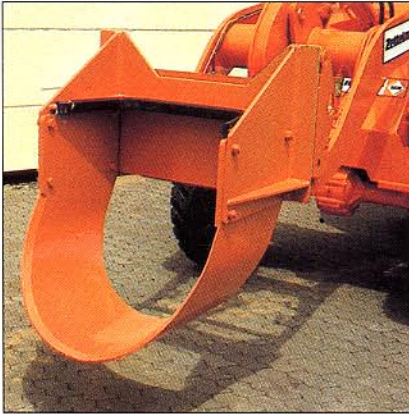
ROPS safety cab with good all-round visibility. Easy boarding. Walk-through cab.



Ergonomical arrangement of controls and gauges.



Built for extreme resistance – a low-maintenance forged articulating – oscillating joint.



Tree planting is no problem with this special attachment.

Front end quick-change system — fast and easy.

Optional quick-change carrier (hydraulic or mechanical) greatly improves the versatility of the ZL 601.

An comprehensive quick-change (QC) range of attachments turns the ZL 601 into a complete industrial machine for applications in all sorts of production and service applications.



The clam bucket does 4 jobs in one: excavating, loading, grabbing and levelling.



Concrete transportation units in various sizes.



Grass, hay, scrub the right fork for each job.

An attachment program with more than 40 different units demonstrates the ZL 601 versatility



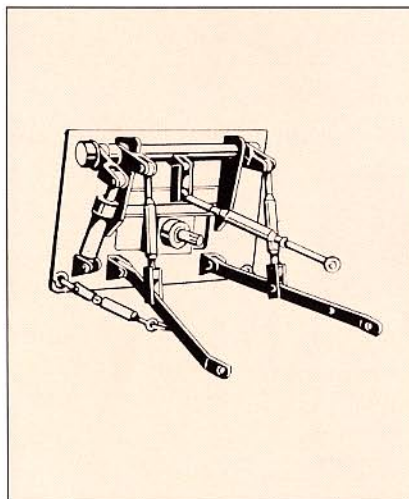
Three-point hydraulic attachment: cultivator.



Side shift adjustment is continuous up to 1.10 m operated from the driver's seat for excavator attachment.



Three-point hydraulic attachment: sand, salt or fertilizer spreader.

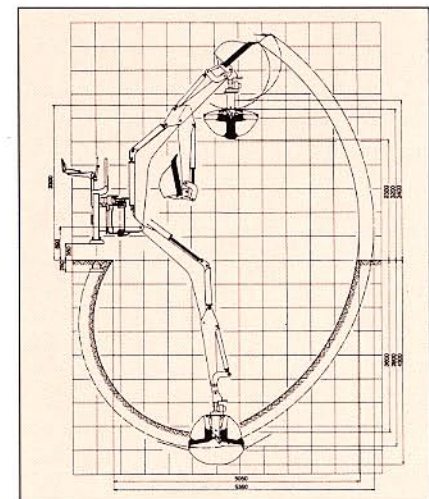


Rear excavator and quick-change attachments.

A powerful rear excavator is an extremely useful tool due to the many attachments available. For a multitude of tasks in highway maintenance, excavation and construction engineering or in landscaping.

A full range of attachments for agricultural, forestry and municipal applications is available for straight-forward, speedy changing by means of the hydraulic three-point linkage.

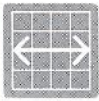
◀ Three-point hydraulic linkage with PTO





Operating Data

Buckets dimensions and weights with 12.5 – 20 tyres		High density bucket	High density bucket	GP bucket	Light Mat. bucket	Light Mat. bucket	Light Mat. bucket	Light Mat. bucket	Clam bucket (4 in 1)	High- tip bucket
Material density max.	t/m ³	2.2	2.0	1.8	1.5	1.2	1.0	0.6	1.8	0.8
Capacity, heaped	m ³	0.5	0.6	0.7	0.85	1	1.2	1.5	0.6	0.85
Capacity, struck	m ³	0.42	0.5	0.6	0.75	0.85	1.06	1.4	0.5	0.75
Bucket weight	kg	280	280	300	310	340	380	390	420	490
Bucket teeth	-	6	6	6	6	6	6	6	6	-
Tipping load, straight	kg	2800	2770	2720	2620	2520	2420	2320	2520	2320
Tipping load, full turn	kg	2360	2330	2280	2230	2160	2060	1950	2180	1930
Breakout force	da N	4100	4050	3900	3050	2700	2300	2300	3650	2600
Hydraulic lifting capacity	da N	2800	2750	2720	2650	2550	2450	2400	2580	2400
Operating weight	kg	4080	4080	4100	4110	4140	4180	4190	4220	4290

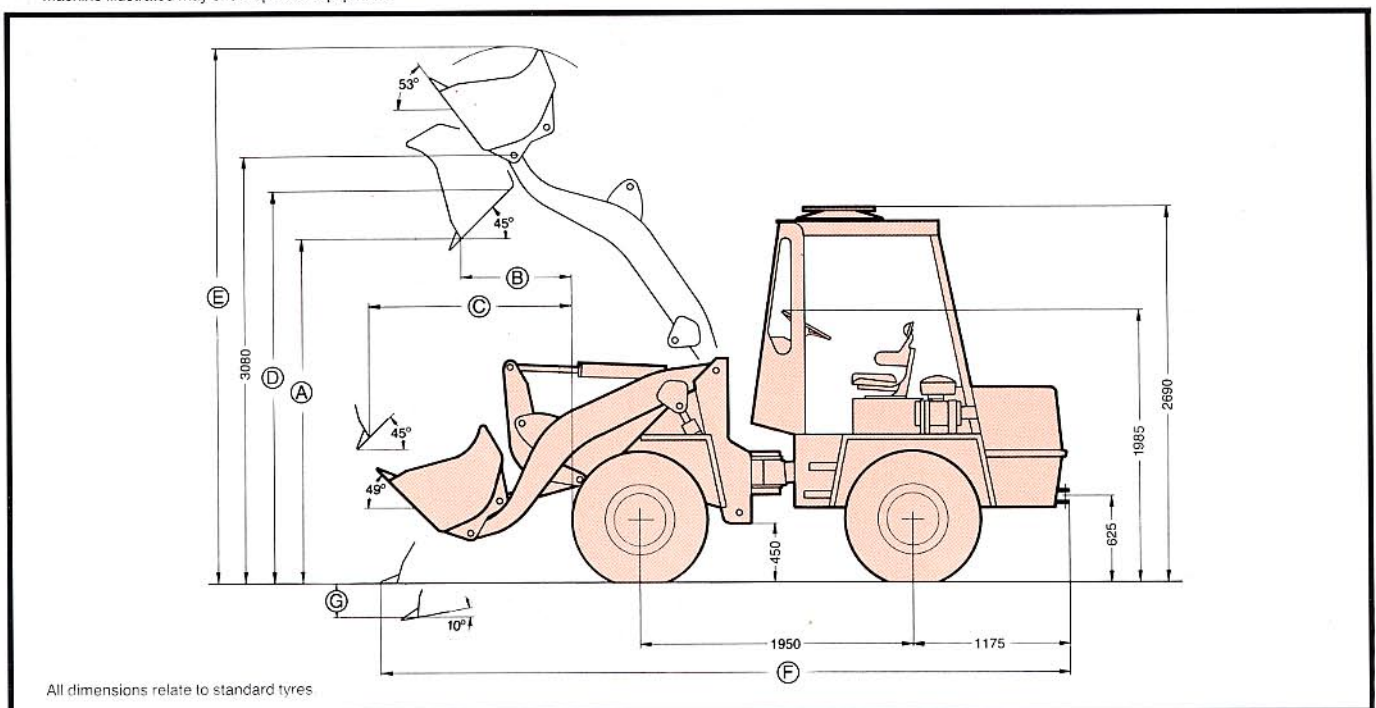


Dimensions

(A) Dump height	mm	2550	2500	2450	2330	2195	2100	2100	2445	3540
(B) Reach at max. height	mm	765	745	740	840	810	900	900	750	1050
(C) Reach at 1,5 m height	mm	1375	1405	1400	1505	1475	1565	1565	1415	1975
(D) Load over height	mm	2890	2850	2790	2820	2745	2745	2745	2850	3580
(E) Lift height max.	mm	3780	3870	3880	3930	3910	4045	4045	3950	4630
(F) Total length	mm	4865	4915	5000	5150	5320	5450	5450	4990	5300
(G) Digging depth at 10°	mm	150	190	245	280	405	430	430	240	260
Turning radius, outside bucket	mm	4250	4300	4350	4380	4440	4480	4580	4320	4400
Bucket width	mm	1750	1750	1750	1750	1750	1750	2000	1750	1750

Excellent performance calls for the correct bucket. 7 standard buckets are available for the ZL 601, i. e. a bucket for every type of material and application, plus a 4 in 1 bucket and high-tip bucket.

Machine illustrated may show optional equipment.



Equipment

Comfort ROPS cab

Walk-through cab
 Lockable doors
 Driver seat, 4-way adjustable
 Seat belt
 Indicators:
 warning lamps
 engine oil pressure
 traction hydraulics oil temperature
 engine temperature
 battery charging
 air filter indicator
 warning buzzer for engine oil temperature and traction hydraulics oil temperature
 Sky light
 Noise insulation according to German Code requirements
 Doors feature sliding windows
 Tool box (lockable)
 Heater with defroster nozzle
 Tinted safety glass (front windshield)
 Windshield washer
 Windshield wiper on front and rear window

General

Alternator (55 amp)
 Dry air cleaner
 Load position indicator
 Towing device
 Lockable tank cap on fuel tank
 Exhaust at cab roof
 Safety equipment in accordance with stringent German regulations and certified (see below)
 Fully equipped to comply with German road traffic regulations
 Noise reduced or noise encapsulated engine



Industrial front loader configuration with quick-change fork (1750 kg load capacity*) or other attachments in the quick-change range.



Optional Equipment

Various bucket sizes with/without teeth
 Permanently installed loading fork
 QC rock fork
 QC attachment carrier, mech.
 QC attachment carrier, hydr.
 QC loading fork
 QC hook and tackle
 QC swivel blade
 QC sweeper
 QC front ripper
 QC tree planting shovel
 QC pusher
 QC manure fork
 QC snow plow
 QC front winch
 QC rock clamp
 QC barrel clamp
 QC bale handler
 QC auger
 QC hydraulic hammer
 QC salt and sand spreader

Silo bucket
 Extra-wide bucket
 Rock bucket
 Three-point hydraulics with PTO
 Cultivator
 Bolt-on cutting edge
 Optional hydraulics, front
 Optional hydraulics, rear
 Backhoe preparation
 Backhoe
 Rear scarifier
 Single-lever operation
 FOPS
 Stacker guard
 Extra-long lifting arm
 Ether coldstart
 Anti-Vandalism kit
 *Loading fork with 1000 mm fork prongs and removable counterweight (300 kg)

