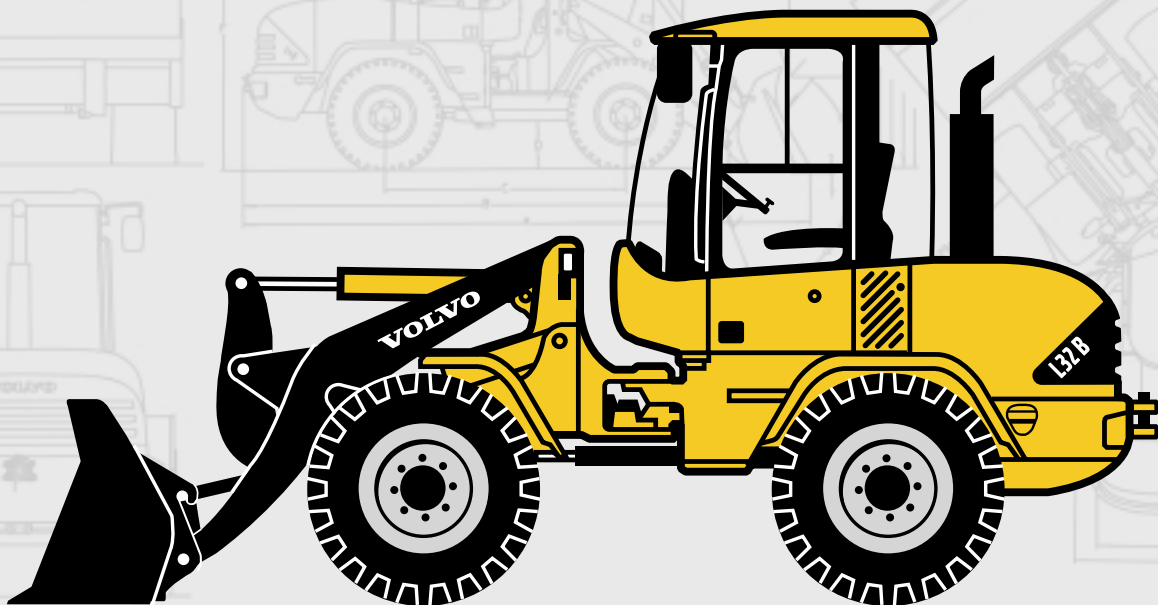


## VOLVO COMPACT WHEEL LOADER

# L32B



- **Gross Power:**  
SAE J1995 51/69 kW/hp  
**Net Power:**  
SAE J1349 49/66 kW/hp
- **Operating Weight:**  
5,5-5,6 t
- **Bucket Capacities:**  
1,0-1,5 m<sup>3</sup>
- **High-performance, low environmental impact diesel engine:** quiet, low emissions, economical fuel consumption.
- **Hydrostatic drive with significant advantages:**
  - Easy to operate due to automatic drive facility.
  - Maintains high drawbar pull even when working hydraulics are engaged.
  - Advantageous hydrostatic brakes, wear-free and safe.
- **Powerful Z-bar loader-linkage with two lifting cylinders:**
  - High breakout force and lifting capacity in bucket applications.
  - Excellent fork-lift capacity.
- **Operator-selected 100% differential lock on both axles** to give optimum traction.
- **Standard hydraulic quick-change coupling:** Various tried-and-tested attachments for a wide range of applications.
- **Purpose designed cab comfort:**
  - Electronic Information System.
  - Multi-function lever.

# VOLVO



## ENGINE

**Engine:** Deutz in-line 4-cylinder, 4 stroke, direct injection diesel engine with turbocharging, oil/air cooled.

### Air cleaning:

1. Paper filter with indicator in cab
2. Safety filter

Engine .....	BF4L 1011F
Gross power @ .....	2300 r/min
SAE J1995 .....	51 kW
SAE J1995 .....	69 PS
Net power @ .....	2300 r/min
SAE J1349 - DIN ISO 1585 .....	49 kW
SAE J1349 - DIN ISO 1585 .....	66 PS
Max. torque @ .....	1900 r/min
SAE J1349 netto .....	208 Nm
DIN ISO 1585 .....	208 Nm
Cubic capacity .....	2,73 l
Bore .....	91 mm
Stroke .....	105 mm



## ELECTRICAL SYSTEM

Rated voltage .....	12 V
Battery voltage .....	12 V
Battery capacity .....	88 Ah
Alternator rating .....	1120/80 W/A
Starter motor output .....	2,2 kW



## DRIVETRAIN

**Transmission:** hydrostatic transmission, full power shift under load, both when changing direction (forward and reverse) and between ranges. Maximum drawbar force can be achieved in all ranges. «Inch/brake pedal» for variable machine speed control and power transfer to bucket hydraulics at constant engine rpm. Multi-function lever for change of direction, differential lock and use of the servo-control.

**Axles:** all-wheel drive by two rigid portal axles.

**Differential locks:** hydraulically actuated 100% differential locks in both axles.

**Frame:** solid front and rear frame, robot-welded. Articulating oscillating joint for optimum manoeuvrability and traction.

Oscillation at wheel, max. ....	260 mm
Track .....	1482 mm
Angle of oscillation .....	±10°
Tires: Size .....	365/80 R20
Rim .....	11 x 20

<b>Speed, max.:</b>	<b>Standard</b>
1st range forward/reverse .....	6,0 km/h
2nd range forward/reverse .....	20,0 km/h



## SERVICE FILL CAPACITIES

Engine .....	10,5 l
Fuel tank .....	86,0 l
Front axle, total .....	11,0 l
Rear axle, incl. drop-box .....	12,0 l
Hydraulic tank, incl. hydraulic system .....	65,0 l



## BRAKING SYSTEM

**Service brake:** reliable dual braking system, acting upon all four wheels.

1. Wear-free, hydrostatic inching brake
2. Central friction brake, actuated via «inch/brake pedal». First stage of pedal application actuates the inching facility, the last third of pedal application applies the central friction brake.

**Parking brake:** central drum brake, acting upon all four wheels.



## HYDRAULIC SYSTEM

Thermostatically controlled oil circuit with integrated cooling system.

**Hydraulic control valve:** Servo-controlled, double acting control valve three spool system, with primary and secondary pressure valves.

1. Lifting function
2. Tilting function
3. Additional function for hydraulic QC  
Unlock, neutral, lock  
Preparation for operating hydraulic attachments with this function is available as an option.

**Hydraulic oil filter:** Combined suction and return-filtration cartridge with a 10 µm filter.

The filter can be replaced without emptying the hydraulic oil tank.

**Hydraulic pump:** gear type-pump

Hydraulic pump	
Flow .....	52 l/min
@ engine rpm .....	2300 r/min
Relief valve pressure .....	23 MPa



## STEERING

Hydrostatic steering. Central articulating-ocillating joint with damping effect.

**Steering pump:** gear-type pump

**Steering cylinder:** 1 double-acting steering cylinder

Steering	
Angle of articulation .....	±40°
Steering pump	
Flow .....	25 l/min
@ engine rpm .....	2300 r/min
Relief valve pressure .....	18,5 MPa



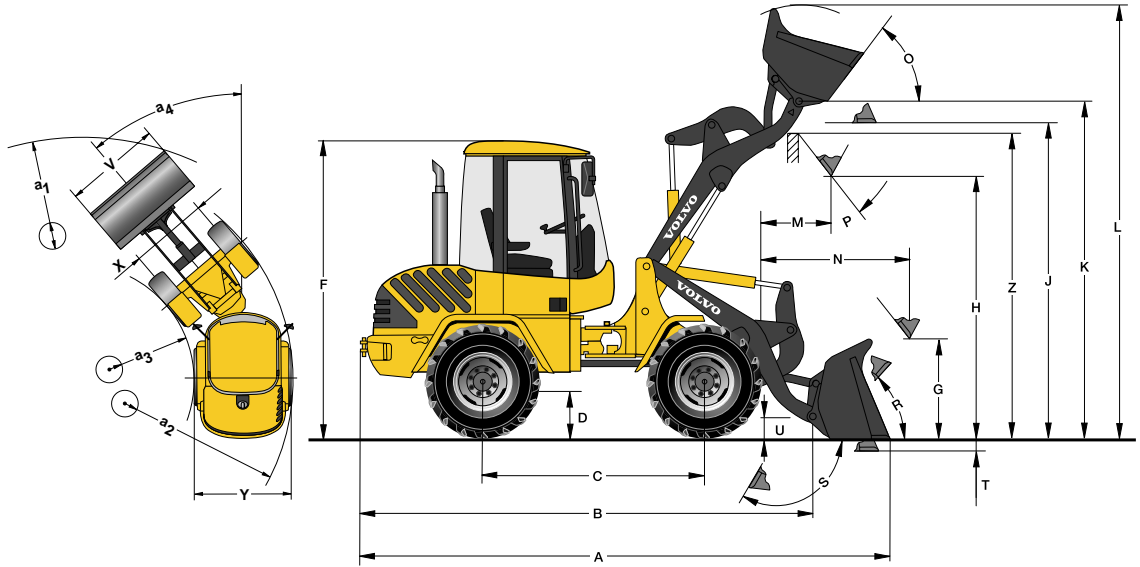
## LINKAGE

Linkage system:	Z
Lift cylinders .....	2
Tilt cylinders .....	1
Lift time (loaded) .....	6,5 s
Lowering time (empty) .....	3,5 s
Dump time .....	1,5 s
Crowd time .....	2,0 s

## DIMENSIONS • Z-BAR LINKAGE

L32B with Z-bar linkage,  
Z-attachment carrier  
and 365/80 R20 tires

B	4440	mm
C	2150	mm
D	440	mm
F	2710	mm
G	900	mm
J	3080	mm
K	3280	mm
O	67	°
P	45	°
R	50	°
S	140	°
U	200	mm
X	1482	mm
Y	1835	mm
Z	2970	mm
a <sub>2</sub>	3910	mm
a <sub>3</sub>	2030	mm
a <sub>4</sub>	±40	°



## OPERATING DATA • Z-BAR LINKAGE

Data according to bucket type		General Purpose		Light Material		4-in-1	High-Tip
L32B with Z-bar linkage, Z-attachment carrier and 365/80 R20 tires							
Capacity heaped	m <sup>3</sup>	1,0	1,1	1,3	1,5	0,9	1,5
Material density	kg/m <sup>3</sup>	1800	1600	1300	1100	1800	1000
Static tipping load, straight (ISO / DIS)	kg	4180	4100	3900	3800	3800	3500
Static tipping load, full turn 40° (ISO / DIS)	kg	3700	3600	3500	3400	3350	3100
Hydraulic lifting capacity, max.	kN	44,0	43,0	42,0	41,0	40,5	36,0
Breakout force	kN	52,0	45,0	40,0	37,0	45,3	-
A Total length	mm	5240	5340	5450	5510	5340	5700
L Lift height, max.	mm	4230	4280	4360	4440	4150	5160
V Bucket width	mm	1900	1900	1900	2000	1900	2000
a <sub>1</sub> Clearance circle	mm	8540	8610	8670	8800	8600	8930
T Digging depth	mm	115	115	115	115	120	115
H Dump height	mm	2600	2520	2440	2400	2500	3780
M Reach at max. height	mm	720	780	850	890	750	990
N Reach, max.	mm	1520	1580	1650	1690	1550	2220
Operating weight	kg	5500	5520	5550	5580	5710	5860

Data with Loading Fork		L32B - Possible machine variations		
		Linkage/attach. carrier	Standard	High speed
Centre of gravity 500 mm				
Tipping load, full turn (ISO / DIS)	kg	2850		
Payload according to EN 474-3, 60/80%	kg	1700/2250		
Payload 80%, transport position, 40° full turn	kg	2500		
		Z-bar / Z	●	—
		TP	—	—

## STANDARD EQUIPMENT

### Engine

Diesel engine, direct fuel injection  
Extra fuel filter  
Cold start aid  
Dry-type air filter

### Electrical System

Alternator 80 A

### Lighting:

Main head lights (halogen)  
full/dipped/asymmetrical  
Working lights (2 front/1 rear)  
Parking lights  
Rear lights  
Brake lights  
Direction indicators  
Hazard warning lights  
Reversing lights  
Cab lighting

### Instrumentation & controls:

Multi-function lever  
12 Volt accessories socket  
Horn  
Hazard warning switch  
Safety start

### Electronic

#### Information System:

Analog LED-information for:

Fuel level  
Engine temperature  
Drive system oil temperature  
LED-illuminated symbols  
(colour-coded) for:  
Direction (forward/reverse)  
Indicators (left/right)  
Pre-heater

Main beam  
Differential locks  
Boom arm suspension system  
(option)  
Loading fork operation (option)  
*LED-illuminated symbols (red)  
with acoustic signal for:*

Parking brake  
Air filter restriction  
Drive system oil temperature  
Engine temperature  
Engine oil pressure  
Battery charging  
Return filter

*Touch pad with symbols and  
integrated LEDs for:*

Parking lights  
Working lights (front/rear)  
Windscreen wiper (rear)  
Rotating beacon (option)  
Boom arm suspension system  
on/off (option)

Locking and activation of Volvo  
-attachment carrier (option)

Activation of multi-function  
lever for directional change  
*Digital LED display activated by  
dual function keys for:*

Entry and retrieval of opera-  
ting and service information  
Anti-theft function control

### Drivetrain

Hydrostatic drive  
Operator-selected 100%  
differential locks

Tires 365/80 R20

### Hydraulic System

Gear-type pump  
Control valve three-spool  
system  
3rd hydraulic circuit

### Service and Maintenance

Tool kit  
Wheel nut wrench

### Cab, Exterior

ROPS/FOPS-cab with flexible  
mountings  
Walk-through cab  
Lockable doors  
All-round tinted safety glass  
Windscreen wiper (front/rear)  
Windscreen washer (front/rear)  
Sliding window in the left door  
Door stops  
External rear view mirrors  
(right/left)

### Cab, Interior

4-way adjustable operator's  
seat  
Adjustable steering column  
Seat belt  
Sunvisor  
Heater with air-filter and  
defroster (front/rear)  
Cab ventilation  
Preparation for an optional air-  
conditioner  
Storage box in the cab

### Working Equipment

Bucket level indicator

Hydraulic quick-change  
attachment carrier

### Carriage Body

Fenders and mudguards,  
(front/rear)  
Lockable engine hood  
Vertical exhaust  
Towing device  
Lifting eyes

### International Standards for Machines and Production

*Quality:*

DIN/ISO 9001

*Safety:*

CE - Criterion

Machine guide-lines 98/37/EC

ROPS ISO 3471

FOPS ISO 3449

Operating weight

ISO 7131

Tipping load / Payload:

ISO/DIS 14397-1

EMV (Electromagnetic

Compatibility)

89/336/EEC plus supplement

*Environment:*

DIN/ISO 14001

Sound insulation:

86/622/EEC, amendment

95/27/EC

German environmental seal

«low noise» RAL - UZ 53

## OPTIONAL EQUIPMENT

### Engine

Pre-heater

### Hydraulics

Additional hydraulics for  
3rd hydraulic circuit  
4th hydraulic circuit  
Additional pump

### Cab

Handthrottle  
Hand control inch valve  
Airconditioner  
Radio

### Working Equipment

Boom arm suspension system

### Environment

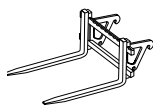
Initial filling of biodegradable  
hydraulic oil

### Safety

Anti-theft system  
Protective guards for:  
Main head lights  
Working lights  
Rear lights  
Rotating beacon  
Audible reverse alarm

## ATTACHMENTS

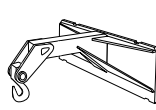
A small selection of the most popular attachments.  
Further buckets and attachments available on request.



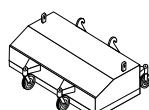
Loading  
Fork



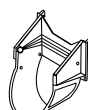
4-in-1  
Bucket



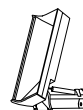
Material Handling  
Arm



Sweeper



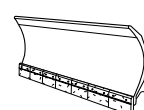
Tree Transplanting  
Bucket



Side-Tip  
Bucket



Hay/Manure  
Fork



Snow  
Plow

Under our policy of continuous product improvement, we reserve the right to change specifications and design without prior notice. The illustrations do not necessarily show the standard version of the machine.

# VOLVO

Volvo Construction  
Equipment

Ref. No. 21 2 430 5520  
Printed in Germany 2001.02  
Volvo, Konz

English  
CWL  
2908359