

VR-723 Material Handler



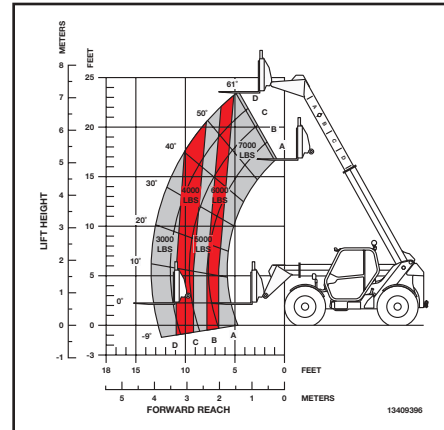
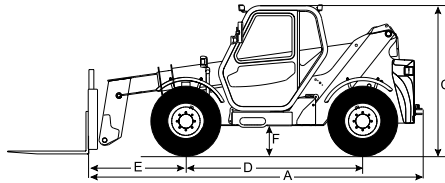
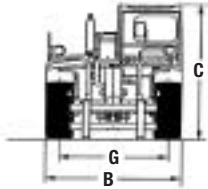
Powerful and Productive

With exceptional break-out force, speed and versatility, this material handler loads, digs, grades and places material. Plus, it allows the operator to easily change out attachments without leaving the cab. Ingersoll-Rand machines carry more weight throughout their load zones than competitive models, while offering more responsive handling and greater agility moving around the jobsite. Stability, capacity, reach and strength — by every measure, these machines excel.



VR-723 Material Handler

Specifications



MODEL VR-723

SIZE / DIMENSIONS

Overall Length (less forks) in (cm)	A	201 (510)
Overall Width in (cm)	B	87.2 (222)
Overall Height in (cm)	C	90 (230)
Wheelbase in (cm)	D	112 (285)

REACH

Drive Axle to Carriage Front in (cm)	E	58 (146)
Ground Clearance in (cm)	F	17 (42)
Tread Width in (cm)	G	72 (182)
Side Leveling		+ / - 6°
Shipping Weight lb (kg)		15,950 (7250)

TURNING RADIUS

Inside in (cm)	54 (137)
Outside in (cm)	154 (390)

ENGINE

Make / Model	Perkins / 1104C-44T turbocharged diesel
Horsepower hp (kW)	100 (74.5) @ 2,200 rpm
Torque ft-lb (Nm)	304 (412) @ 1,400 rpm

TRANSMISSION

Type	Hydrostatic
Two Driving Modes	Working / travel
Working Speed (fwd & rev) mph (km/h)	0 - 4.6 (0 - 7.39)
Travel Speed (fwd & rev)	0 - 15.4 (0 - 25)

DRIVE AXLES

Front & Rear	All-wheel drive
Type	Planetary steering

BRAKES

Service	Internal wet disc
Parking	Internal — spring applied, hydraulic release

TIRES

Make / Model	Titan / Lift Rigger II
Front & Rear	400 / 70 x 20 — 166A2
Ballast	Not required

STEERING

Three Modes	2-wheel, 4-wheel or crab
-------------	--------------------------

ELECTRICAL

Negative Ground	12V
Alternator	100A
Battery	900A
Back-up Alarm	102 dBA

Product improvement is a continuing goal at Ingersoll-Rand.
Designs and specifications are subject to change without notice or obligation.

RATED LOAD CAPACITY

Boom Retracted @ Max Angle lb (kg)	7,000 (3182)
Boom Extended @ Max Angle lb (kg)	7,000 (3182)
Boom Extended @ Max Reach lb (kg)	3,000 (1364)

OPERATING SPECIFICATIONS

Max Lift Capacity lb (kg)	7,000 (3182)
Max Lift Height ft (cm)	23' 4" (712)
Max Forward Reach ft (cm)	
From Front of Tires to 24" Load Center	13' 4" (406)
Practical Placement Height ft (cm)	21' (640)
Max Reach Practical Placement Height ft (cm)	7' 2" (219)
Max Vertical Reach Below Grade in (cm)	15" (37)
Max Reach @ Max Height ft (cm)	
From Front of Tires to 24" Load Center	4' 6" (137)
Break-out Force lb (kN)	11,885 (53)
Drawbar Pull lb (kN)	10,341 (46)

BOOM

Boom Type	2-Stage
Boom Angles	Up: 62° Down: -9°
Extend Speed	6.9 seconds
Retract Speed	5.6 seconds
Boom Lift Speed	7.5 seconds
Boom Lower Speed	4.6 seconds
Carriage Rotation	154°

Note: Capacities are to ASME B56.6-2002

OPTIONS / ACCESSORIES

- Air-conditioned cab
- Rotating beacon

