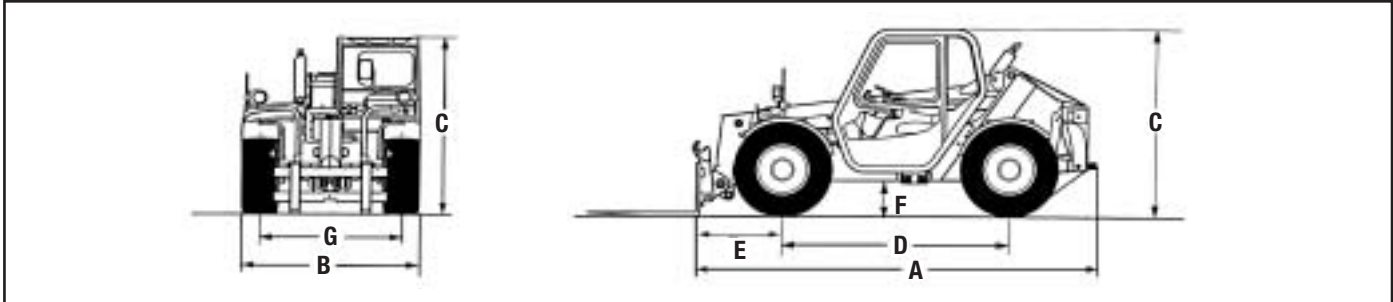


VR-518 Material Handlers

SPECIFICATIONS



MACHINE DIMENSIONS*		FT / IN	MM
Overall Length (less forks)	A	14' 6"	4420
Overall Width	B	6' 6"	1981
Overall Height	C		
w/ Standard Tires		6' 11"	2108
w/ Low-profile Tires		6' 9"	2057
Wheelbase	D	8' 2"	2490
Drive Axle to Carriage Front	E	4' 8"	1422
Ground Clearance	F		
w/ Standard Tires		1' 2"	356
w/ Low-profile Tires		1' 0"	305
Tread Width		5' 2"	1575
Shipping Weight**		10,846 lb	4930 kg
Max Forward Reach		10' 8"	3251
Max Lift Height			
w/ Standard Tires		18' 4"	5588
w/ Low-profile Tires		17' 11"	5461
Max Reach @ Max Lift Height		3' 6"	1067
Practical Placement Height			
w/ Standard Tires		15' 9"	4800
w/ Low-profile Tires		15' 6"	4725
Max Reach @ Practical Placement Height		5' 3"	1600
Max Reach Below Grade w/ Standard Carriage			
w/ Standard Tires		1' 0"	305
w/ Low-profile Tires		1' 3"	381
Bucket Dump Height		16' 3"	4953
Reach @ Dump Height		2' 8"	813
TURNING RADIUS	FT / IN	MM	
To Outside of Tires	12' 4"	3759	
To Inside of Tires	4' 0"	1219	
PERFORMANCE	LB	KG	
Boom Retracted @ Max Height	5,000	2,273	
Capacity @ Max Height	5,000	2,273	
Capacity @ Max Reach	2,000	909	

18-ft 4-in
Maximum Lift Height

99 hp
EPA Tier I
Turbocharged Diesel Engine

5,000 lb
Rated Lift Capacity



* Vehicle dimensions with 24-in (600 mm) load center.

** Lightest machine — no attachment, air-filled tires and open ROPS.

VR-518 Material Handlers

SPECIFICATIONS

BOOM

Boom Type	2-stage
Max Boom Angle	62°
Min Boom Angle	-9°
Bucket Dump Angle @ Max Height	26.8°
Telescope Extend Speed	8.0 seconds
Telescope Retract Speed	7.1 seconds
Boom Raise	8.4 seconds
Boom Lower	5.0 seconds
Carriage Rotation	153°
Auxiliary Hydraulic Flow	22 gpm
Draw Bar Pull	8,317 lb (34996 N)
Bucket Breakout Force	8,093 lb (36000 N)

ENGINE

Make / Model	Perkins 1004.40T
Fuel / Cooling	Diesel / liquid
SAE net hp	99 hp
Fuel Tank Capacity	38.3 gal (145 L)

TRANSMISSION

Type	2-speed hydrostatic with inching
Low Speed	4.7 mph (7.6 km/h)
High Speed	18.4 (29.6 km/h)

OPERATION

Steering	2-wheel, 4-wheel or crab
Drive	All-wheel drive
Hydraulics	Boom lift, telescope, carriage rotate & auxiliary boom circuit controlled by single joystick

STANDARD FEATURES

- Single joystick control
- Single auxiliary hydraulics
- Back-up alarm
- Boom angle indicator
- Cup holder
- Fenders
- Frame level indicator
- Front and rear work lights
- Turn signals / flashers / brake lights
- Horn and seat belt
- Lockable engine hood
- 12V power port
- Lockable battery cover
- Lockable fuel tank cap
- Lockable hydraulic tank cap
- Rear wiper / washer
- Road lights
- Trailer hitch

OPTIONS / ACCESSORIES

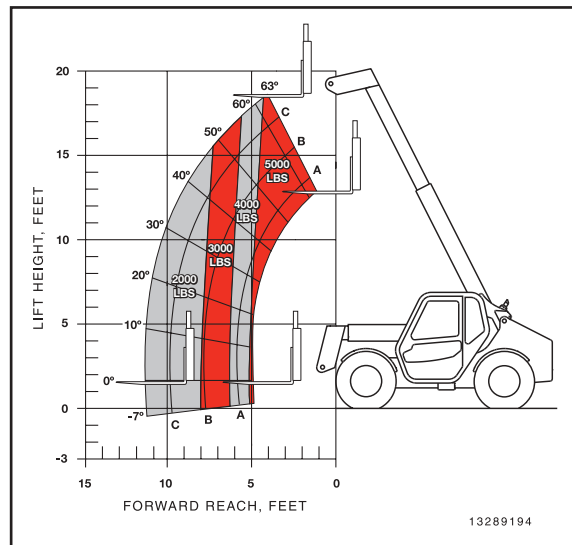
- All-weather cab w/ heat and air conditioning
- Windshield guard
- Rotating beacon

ATTACHMENTS*

- Buckets
- Side-tilt carriages
- Truss booms
- Various width carriages
- Bob-Tach™ adapter

* Contact your local Ingersoll-Rand distributor for additional attachment options.

VR-518



Always read and understand the published rated load capacity for the material handler model you are operating and do not exceed it. Load ratings per ASME B56.6 — 1992.

