

# XR

SERIES  
TELESCOPIC  
HANDLERS

# UpRight



XR636

XR637

XR640

XR641

XR840

XR841



# Our new Telehandler is stronger, quicker, smarter and very smooth.

All around the world UpRight is known for the durability and value of our machines — a reputation of quality, imagination and innovation that now reaches new heights with the introduction of the UpRight XR Series telescopic handler.

Though it is true that there are many telehandlers on the market, there has never been a machine as well thought out and finely-tuned as the UpRight XR Series.

You see, we didn't just march into the telehandler business and expect to succeed overnight. We did our homework. We talked to drivers. We actually drove most of the telehandlers that were available. And through it all - years of studies and engineering - our aim was true: to produce a telehandler that was better in all respects.







We know that telehandler operators spend a lot of time in the seat. That's why one of our priorities was to ensure maximum comfort and visibility. The spacious UpRight cab is filled with amenities and easy to operate, intuitive controls. A quiet engine and smooth, comfortable controls reduce operator fatigue during long work shifts. The UpRight XR Series is available in low boom mount (637, 641, or 841) or high boom mount (636, 640, or 840) configurations. Low is for maximum driving visibility in tool carrying applications. High is for increased visibility for pick-and-carry.

Yes, it's fast. And really maneuverable. Get up to 22 mph with the powerful Cummins diesel engine and 4-speed powershift transmission. Then, our three-mode steering makes any job easy – a single switch selects 2-wheel, 4-wheel or crab steer modes to get you into tight spaces or over rough terrain.

What about servicing? Well, we've designed the XR Series to need less service than the others. But when it does need work, it's easy to maintain, keeping downtime to an absolute minimum. We've mounted the engine on the side with a single wide-opening cover. The high density boom slide bearings, the internally mounted extension cylinder and chains can all be replaced without disassembly of the boom.

Plus, there's an extensive selection of options and attachments available to maximize the XR Series' versatility on just about any jobsite. Specialist forks and carriages, auxiliary hydraulics, and productivity tools such as a truss boom, material bucket and dozer blade mean the machine stays on site from first operation to last.

Our warranty is second to none. It features two full years' warranty on hydraulic, drive train, and electrical parts and labor and five years' warranty on structural components. Service training, technical support and parts are available through our worldwide UpRight product support organization.





# Standard Features



ROPS & FOPS certified cab with lockable storage

3 rear view mirrors

Frame mounted boom guides for tool carrying applications

16-ply tires resist punctures, foam fill optional

2 wheel front, 4 wheel and crab steering

A

UpRight

Inboard, wet disc brakes

Unibody welded, balanced frame for smooth ride



Automatically applied parking brake with push button release

Push button inching control

Single joystick control of all boom functions

Self-retracting seatbelt — stays out of the mud

Padded adjustable seat

Ergonomically designed dash with full instrumentation



# Options & Attachments

Optional fully enclosed cab

Air intake heater grid for improved cold starting



10/10 degree frame leveling

Oscillating rear axle with auto lock at boom angle over 40 degrees

15 gallon fuel tank with lockable cover



Truss Boom



Side-tilt Carriage



Utility Bucket



Scraper Blade

## Options

Cummins 4BT3.9 110hp turbo engine (std. on XR 840/841)

15.5 x 25, 12 ply tires

Foam filled tires

Enclosed cab with heater

3" self-retracting seatbelt

Air conditioning

Fenders

Road lights

Work lights

Flashing amber beacon

Auxiliary hydraulics



Skid-steer Attachment Adapter



Standard 60 inch-wide Carriage



Grapple Bucket



# Specifications

## XR636 / XR637

### OPERATING CHARACTERISTICS

Rated capacity:	6,000 lb. (2,720kg)
Maximum lift height:	XR636: 36 ft. (10.9m) XR637: 37 ft. (11.3m)
Max. forward reach F:	23 ft. 9 in. (7.2m)
Capacity @ max. forward reach:	XR636: 2,000 lb. (907kg) XR637: 1,500 lb. (680kg)
Max. reach below grade:	40 in. (1.0m)
Frame levelling capability, (l/r):	10°/10°
Max. drive speed:	22 mph (35km/h)

### ENGINE

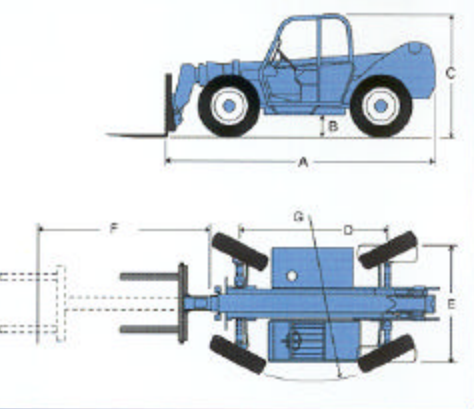
Cummins diesel 4B3.9-80  
Naturally aspirated, 80hp (60kw) @ 2500 rpm  
Cummins diesel 4BT3.9-110  
Turbocharged, 110hp (82kw) @ 2500 rpm

### DRIVE COMPONENTS

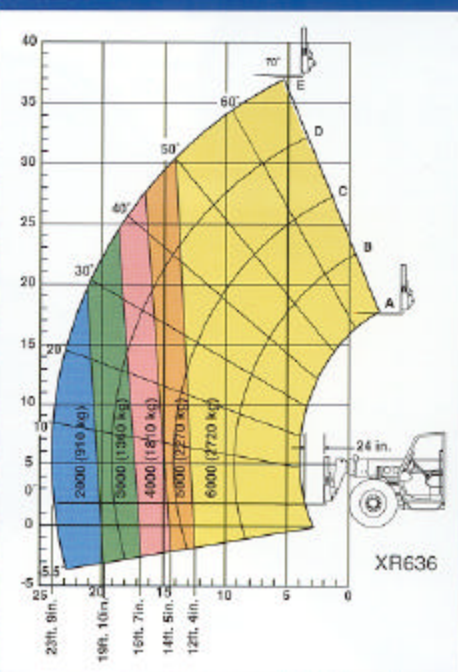
Transmission: Powershift, 4 forward/3 reverse speeds  
Axles: All wheel drive, planetary steering, compact 4 pinion differentials, single double-acting steer cylinder  
Service brakes: Inboard, fully enclosed wet disc both axles  
Parking brake: Automatically activated, spring-applied, hydraulically-released  
Tires: 13.0 x 24, 16-ply air (foam filled optional)

### KEY DIMENSIONS/CAPACITIES

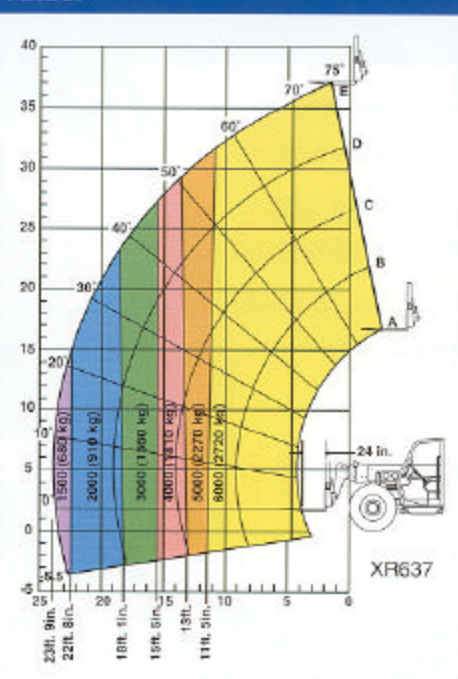
Overall length (less forks) A:	216 in. (5.49m)
Overall width E:	98 in. (2.49m)
Overall height C:	96 in. (2.42m)
Wheelbase D:	121 in. (3.07m)
Ground clearance B:	16 in. (0.40m)
Outside turning radius (between curbs) G:	12 ft. 11 in. (3.9m)
Fuel tank capacity:	35 gals. (130 liters)
Hydraulic reservoir capacity:	48 gals. (180 liters)
Operating weight:	18,500 lb. (8,390kg)



### XR636



### XR637



## XR640 / XR641

### OPERATING CHARACTERISTICS

Rated capacity:	6,000 lb. (2,720kg)
Maximum lift height:	XR640: 40.5 ft. (12.3) XR641: 41.5 ft. (12.6)
Max. forward reach F:	27 ft. 2 in. (8.3)
Capacity @ max. forward reach:	1,300 lb. (590kg) with optional stabilizers: 3,000 lb. (1,361kg)
Max. reach below grade:	48 in. (1.2)
Frame levelling capability, (l/r):	10°/10°
Max. drive speed:	22 mph (35km/h)

### ENGINE

Cummins diesel 4B3.9-80  
Naturally aspirated, 80hp (60kw) @ 2500 rpm  
Cummins diesel 4BT3.9-110  
Turbocharged, 110hp (82kw) @ 2500 rpm

### DRIVE COMPONENTS

Transmission: Powershift, 4 forward/3 reverse speeds  
Axles: All wheel drive, planetary steering, compact 4 pinion differentials, single double-acting steer cylinder  
Service brakes: Inboard, fully enclosed wet disc both axles  
Parking brake: Automatically activated, spring-applied, hydraulically-released  
Tires: 13.0 x 24, 16-ply air (foam filled optional)

### KEY DIMENSIONS/CAPACITIES

Overall length (less forks) A:	228 in. (5.70m)
Overall width E:	98 in. (2.49m)
Overall height C:	96 in. (2.42m)
Wheelbase D:	121 in. (3.07m)
Ground clearance B:	16 in. (0.40m)
Outside turning radius (between curbs) G:	12 ft. 11 in. (3.9m)
Fuel tank capacity:	35 gals. (130 liter)
Hydraulic reservoir capacity:	48 gals. (180 liter)
Operating weight:	18,680 lb. (8,470kg)

The UpRight XR Series is available in low or high boom mount configurations



Low Boom: XR637, XR641, XR841

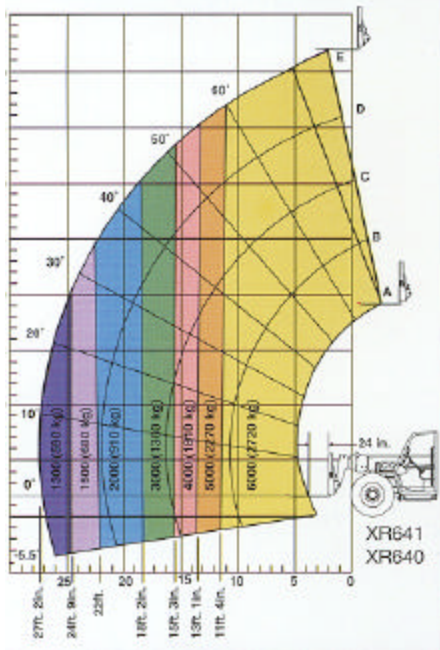


High Boom: XR636, XR640, XR840



# XR840/XR841

## XR640 & XR641 without Stabilizers



## OPERATING CHARACTERISTICS

Rated capacity: 8,000 lb. (3,629kg)  
 Maximum lift height: XR840: 40.5 ft. (12.3m)  
 XR841: 41.5 ft. (12.6m)  
 Max. forward reach F: 27 ft. 2 in. (8.3m)  
 Capacity @ max. forward reach: 1,825 lb. (930kg)  
 with optional stabilizers: 4,000 lb. (1,814kg)  
 Max. reach below grade: 48 in. (1.2m)  
 Frame levelling capability, (l/r): 10°/10°  
 Max. drive speed: 22 mph (35km/h)

## ENGINE

Cummins diesel 4BT3.9-110  
 Turbcharged, 110hp (82kw) @ 2500 rpm

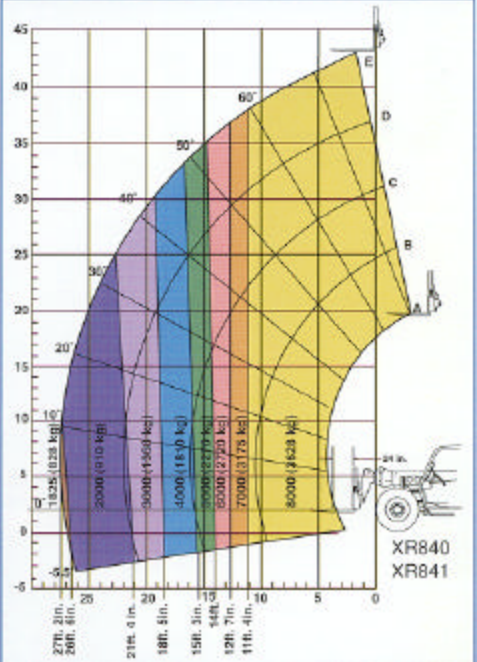
## DRIVE COMPONENTS

Transmission: Powershift, 4 forward/3 reverse speeds  
 Axles: All wheel drive, planetary steering, compact 4 pinion differentials, single double-acting steer cylinder  
 Service brakes: Inboard, fully enclosed wet disc both axles  
 Parking brake: Automatically activated, spring-applied, hydraulically-released  
 Tires: 13.0 x 24, 16-ply air (foam filled optional)

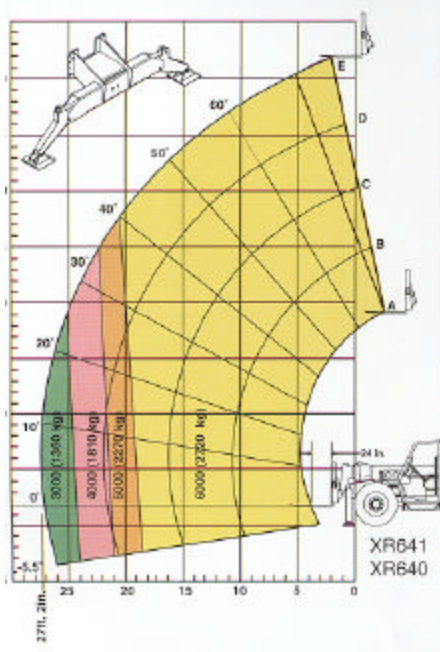
## KEY DIMENSIONS/CAPACITIES

Overall length (less forks) A: 228 in. (5.70m)  
 Overall width E: 98 in. (2.49m)  
 Overall height C: 96 in. (2.42m)  
 Wheelbase D: 121 in. (3.07m)  
 Ground clearance B: 16 in. (0.40m)  
 Outside turning radius (between curbs) G: 12 ft. 11 in. (3.9m)  
 Fuel tank capacity: 35 gals. (130 liters)  
 Hydraulic reservoir capacity: 48 gals. (180 liters)  
 Operating weight: 21,180 lb. (9,605kg)

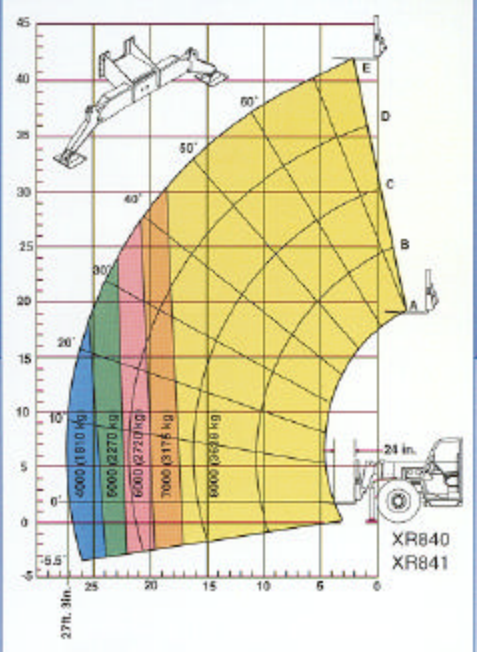
## XR840 & XR841 without Stabilizers



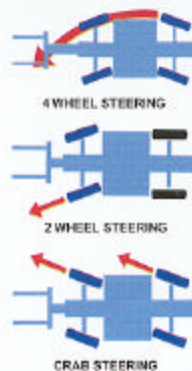
## XR640 & XR641 with Stabilizers



## XR840 & XR841 with Stabilizers



**Maneuvering is easy: select from three steering modes with a single switch**



Meets applicable requirements of OSHA and ANSI/ASME B56.6b -1998 stability tests for rough terrain fork lifts. Cab meets SAE J1040 ROPS and SAE J231 FOPS requirements. Specifications subject to change without notice.



[www.upright.com](http://www.upright.com)

**UpRight** **XR**  
SERIES  
TELESCOPIC  
HANDLERS

**North America  
U.S.A.**

(800) 926-5438  
(559) 891-5200  
Fax: (559) 896-9012  
1775 Park Street  
Selma, California  
93662

**Europe**

International Support Centre  
31-10-238-0000  
Fax: 31-10-238-0001  
Innsbruckweg 114, 3047 AH  
Rotterdam, The Netherlands

Complete product support for UpRight telehandlers, as well as UpRight articulated and telescopic booms, scissor lifts, portable personnel lifts, and aluminum scaffolding

Financial services

Customer service and technical assistance

Best warranty program in the industry

Electronic service manuals

Worldwide regional parts depots

Comprehensive sales, service, operator training

Extensive marketing services

Printed in U.S.A.  
© UpRight, Inc. 2000

Form No. 200401-000-2006 15-A