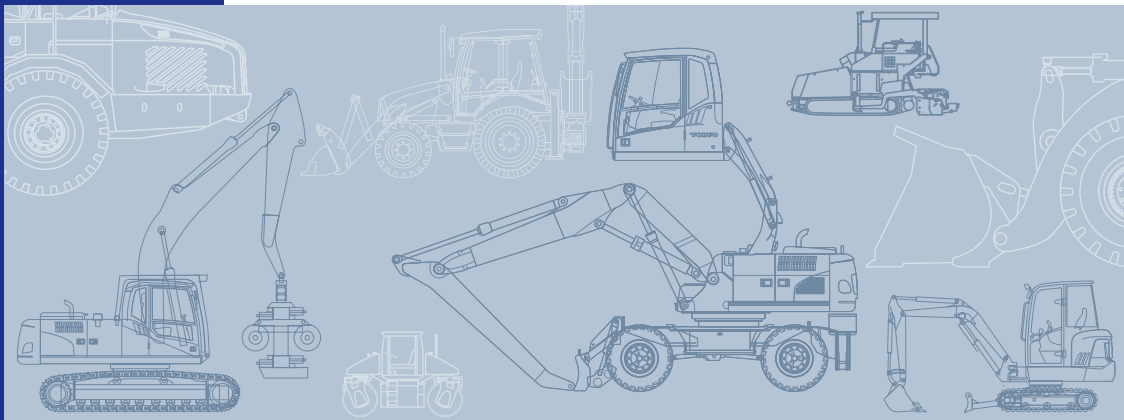


# VOLVO CONSTRUCTION EQUIPMENT PRODUCT RANGE



**MORE CARE. BUILT IN.**





# CONTENT

The Volvo Group	4
Volvo Construction Equipment	6
Products	11
Volvo Financial Services	60
Volvo Used Equipment	62
Customer Support	64

# THE VOLVO GROUP

The Volvo Group is one of the leading suppliers of commercial transport solutions providing products such as trucks, buses, construction equipment, drive systems for marine and industrial applications as well as aircraft engine components. The Volvo Group also offers its customers financial services. The Group has about 100,000 employees, production facilities in 19 countries, and sales activities in some 180 countries. Quality, safety and environmental care are the values that form the Volvo Group's common base and are important components of our corporate culture.

The Volvo Group is the world's largest manufacturer of heavy-duty diesel engines for commercial use and also a significant manufacturer of drivelines for heavy vehicles.

During the year, the Volvo Group showcased the fourth-generation hybrid solution on a broad front in buses, trucks and construction equipment.

Unlike a series hybrid system, a powertrain based on a parallel hybrid system can be used as a pure conventional diesel powered system or as an electric powertrain system

Volvo Trucks



Renault Trucks



Nissan Diesel



Mack Trucks



Construction Equipment



Buses





or in a mixed mode. This flexibility ensures highest possible system efficiency irrespective of driving condition and a much improved overall fuel efficiency compared to the series hybrid system.

The Volvo Group's hybrid solutions reduces fuel consumption by up to 20% in refuse trucks, reduces CO<sub>2</sub> emissions by up to 20% in distribution trucks, and up to 30% in city buses and decreases fuel consumption in wheel loaders by up to 50%.



Volvo Penta

Volvo Aero

Financial Services



# VOLVO CONSTRUCTION EQUIPMENT

Volvo CE is the world's largest manufacturer of articulated haulers and wheel loaders, and one of the world's largest manufacturers of excavation equipment, road development machines and compact construction equipment.

Volvo CE continues to evolve as a total solution provider and to develop its segmentation approach to customer needs. In line with the Group's strategy to increase to grow within soft products, Volvo CE continues to expand its soft products offering, including remote machine monitoring systems and uptime services.

The rental business has expanded with 15 new rental stores in North America, Europe and other markets.

Products launched in 2008 included:

- L220F Hybrid wheel loader prototype
- L45F and L50F mid-sized wheel loaders
- EW210C mid-sized excavator
- L180F High-Lift wheel loader
- Feller bunchers for the forestry segment



# AT THE CORE OF EVERYTHING WE DO

Volvo has a great heritage of engineering excellence. The Volvo Construction Equipment is designed around the people who use it. It's built to work harder, for longer. To be kinder to the environment.

Our philosophy summarizes what we want our customers to think about us. It forms a core to our thinking – a reminder and summary of the overall design approach.

That approach is of course based in the Volvo values of quality, safety and environmental care and the Volvo people-first design principles. Everything we do in designing, building and delivering equipment for our customers should fit in with our philosophy and the Volvo values.

We call the unique philosophy that sets us apart:

**MORE CARE. BUILT IN.**







# PRODUCTS

Compact Wheel Loaders	12
Wheel Loaders	16
Backhoe Loaders	20
Compact Excavators	22
Wheeled Excavators	26
Elevated Cab	30
Crawler Excavators	32
Elevated Cab	36
Standard Demolition	38
High Reach Demolition	40

Articulated Haulers	42
Motor Graders	44
Milling Equipment	46
Pavers	48
Screeds	50
Asphalt Compactors	52
Soil Compactors	54
Tracked Forestry Carriers	56
Pipelayers	58

Volvo Financial Services	60
Volvo Used Equipment	62
Customer Support	64

# COMPACT WHEEL LOADERS

## Main features

- Three types of linkage: Parallel, Z-bar and TP-linkage
- Quick change coupler with a wide range of attachments
- Inch brake pedal for variable machine speed control
- Comfort cab with excellent all-round view
- Unique manoeuvrability (high ground clearance, operator selected 100% differential locks)
- Good access for easy servicing
- Low-emission engines



		<b>L20B</b>	<b>L25B</b>	<b>L25B</b>
		<b>Parallel-linkage</b>	<b>Parallel-linkage</b>	<b>Z-linkage</b>
<b>Engine</b>	Volvo	D3.6D	D3.6D	D3.6D
<b>Max power</b> SAE J1995 gross	kW	41	43	43
Rated speed	r/min	2 300	2 300	2 300
<b>Max power</b> SAE J1995, net	kW	40	42	42
Rated speed	r/min	2 300	2 300	2 300
<b>Max. torque</b> ISO 9249, SAE J1349 net	Nm	180	190	190
Rated speed	r/min	1 700	1 700	1 700
<b>Maximum speed</b> , forward/reverse	km/h	20	20	20
<b>Tipping load</b> (ISO/DIS 14397-1) straight	kg	3 250	3 800	3 615
<b>Tipping load</b> (ISO/DIS 14397-1) at full turn 40°	kg	2 900	3 400	3 255
<b>Breakout force</b>	kN	35	37	55
With hook-on bucket	m <sup>3</sup>	0,7	0,85	0,9
<b>Bucket capacity</b>	m <sup>3</sup>	0,7–1,2	0,85–1,5	0,9–1,4
<b>Operating weight</b>	t	4,3	4,8	4,8

# COMPACT WHEEL LOADERS

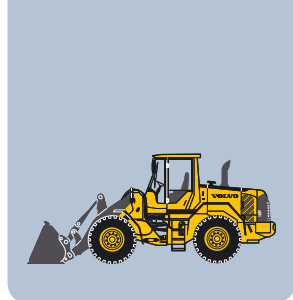
		<b>L30B Pro Z-linkage</b>	<b>L35B Pro TP-linkage</b>	<b>L35B Pro Z-linkage</b>
<b>Engine</b>	Volvo	D3.6D	D3.6D	D3.6D
<b>Max power</b> SAE J1995 gross	kW	52	59	59
Rated speed	r/min	2 300	2 300	2 300
<b>Max power</b> SAE J1995, net	kW	50	57	57
Rated speed	r/min	2 300	2 300	2 300
<b>Max. torque</b> ISO 9249, SAE J1349 net	Nm	241	241	241
Rated speed	r/min	1 700	1 700	1 700
<b>Maximum speed</b> , forward/reverse	km/h	20/30	20/30	30
<b>Tipping load</b> (ISO/DIS 14397-1) straight	kg	4 350	4 200	4 950
<b>Tipping load</b> (ISO/DIS 14397-1) at full turn 40°	kg	3 850	3 700	4 350
<b>Breakout force</b>	kN	61	62,5	60,5
With hook-on bucket	m <sup>3</sup>	1,0	1,0	1,2
<b>Bucket capacity</b>	m <sup>3</sup>	1-1,5	1-1,4	1,2-1,4
<b>Operating weight</b>	t	5,5	6,1	6,25

		<b>L40B</b>	<b>L45F</b>	<b>L50F</b>
		<b>TP-linkage</b>	<b>TP-linkage</b>	<b>TP-linkage</b>
<b>Engine</b>	Volvo	D5D	D5D	D5D
<b>Max power</b> SAE J1995 gross	kW	71	75	87
Rated speed	r/min	2 200	2 200	2 200
<b>Max power</b> SAE J1995, net	kW	69	73	85
Rated speed	r/min	2 200	2 200	2 200
<b>Max. torque</b> ISO 9249, SAE J1349 net	Nm	400	409	478
Rated speed	r/min	1 700	1 600	1 600
<b>Maximum speed</b> , forward/reverse	km/h	20/35	20/42	20/42
<b>Tipping load</b> (ISO/DIS 14397-1) straight	kg	5 450	5 970	6 560
<b>Tipping load</b> (ISO/DIS 14397-1) at full turn 40°	kg	4 800	5 290	5 810
<b>Breakout force</b>	kN	66	62	72
With hook-on bucket	m <sup>3</sup>	1,3	1,4	1,5
<b>Bucket capacity</b>	m <sup>3</sup>	1,3–2	1,2–2,0	1,4–2,3
<b>Operating weight</b>	t	7,82	8,63	9,41

# WHEEL LOADERS

## Main features

- TP-linkage (patented) with parallel lift action and high breakout torque throughout the lifting range (not L350F)
- Care Cab for high operator comfort and efficiency
- Optimized serviceability and Contronic monitoring system
- Automatic shifting system, APS with mode selector (4 forward and 4 reverse gears).
- Load-sensing hydraulics
- High performance, low emission engines.
- Low sound levels
- AWB, axles with hub-mounted wet disc brakes (oil cooled) (AHW L350F)
- Boom suspension BSS (optional equipment)
- Comfort Drive Control, CDC lever steering (optional equipment)
- Volvo Genuine Attachments, the widest range of original attachments
- TP-linkage, attachment bracket and attachments optimized for best visibility



		<b>L60F</b>	<b>L70F</b>	<b>L90F</b>
<b>Engine</b>	Volvo	D6E LC E3	D6E LB E3	D6E LA E3
<b>Max power, at</b>	r/s (r/min)	28,3 (1 700)	28,3 (1 700)	28,3 (1 700)
SAE J1995 gross	kW (hp)	115 (156)	126 (171)	129 (175)
ISO 9249, SAE J1349 net	kW (hp)	114 (155)	125 (170)	128 (174)
<b>Tires</b>		17,5 R25, 20,5 R25, 600/65 R25	20,5 R25, 600/65 R25	20,5 R25, 650/65 R25
<b>Breakout force</b>	kN	82,9	95,4	118,5
with bucket	m <sup>3</sup>	2,1	2,3	2,5
<b>Static tipping load</b>				
at full turn	kg	7 380	8 420	9 570
<b>Bucket capacity</b>	m <sup>3</sup>	1,6-5,0	2,0-6,4	2,1-7,0
<b>Log grapples</b>	m <sup>2</sup>	0,7-1,3	0,9-1,5	1,3-2,4
<b>Operating weight</b>	t	11,0-12,3	12,7-15,0	15,0-17,0

# WHEEL LOADERS

		<b>L110F</b>	<b>L120F</b>
<b>Engine</b>	Volvo	D7E LB E3	D7E LA E3
<b>Max power, at</b>	r/s (r/min)	28,3 (1 700)	28,3 (1 700)
SAE J1995 gross	kW (hp)	170 (231)	180 (245)
ISO 9249, SAE J1349 net	kW (hp)	169 (230)	179 (243)
<b>Tires</b>		23,5 R25, 750/65 R25	23,5 R25, 750/65 R25
<b>Breakout force</b>	kN	156,7	164
with bucket	m <sup>3</sup>	3,1	3,4
<b>Static tipping load</b>			
at full turn	kg	11 270	12 140
<b>Bucket capacity</b>	m <sup>3</sup>	2,7–9,5	2,6–9,5
<b>Log grapples</b>	m <sup>2</sup>	1,1–2,4	1,1–2,4
<b>Operating weight</b>	t	18,0–20,0	19,0–21,0

		<b>L150F</b>	<b>L180F</b>	<b>L220F</b>	<b>L350F</b>
<b>Engine</b>	Volvo	D12D LB E3	D12D LA E3	D12D LB E3	D16E LA E3
<b>Max power, at</b>	r/s (r/min)	23,3-28,3 (1 400-1 700)	23,3-26,7 (1 400-1 600)	26,7 (1 600)	28,3-30,0 (1 700-1 800)
SAE J1995 gross	kW (hp)	210 (286)	235 (320)	261 (355)	397 (540)
ISO 9249, SAE J1349 net	kW (hp)	209 (284)	234 (318)	259 (352)	394 (536)
<b>Tires</b>		26,5 R25 775/65 R29	26,5 R25 775/65 R29	29,5 R25 875/65 R29	35/65 R33 875/65 R33
<b>Breakout force</b>	kN	184,7	214,7	224,5	472,8
with bucket	m <sup>3</sup>	4,0	4,6	5,4	6,9
<b>Static tipping load</b>					
at full turn	kg	15 280	18 260	20 750	34 290
<b>Bucket capacity</b>	m <sup>3</sup>	3,1-12,0	3,7-14,0	4,5-14,0	6,2-12,7
<b>Log grapples</b>	m <sup>2</sup>	1,6-3,1	1,6-3,5	1,7-4,0	5,5-6,3
<b>Operating weight</b>	t	23,0-26,0	26,0-29,0	31,0-33,0	50,0-56,0

#### **L180F High-lift**

<b>Engine</b>	Volvo	D12D LA E3
<b>Max power, at</b>	r/s (r/min)	23,3-26,7 (1 400-1 600)
SAE J1995 gross	kW (hp)	235 (320)
ISO 9249, SAE J1349 net	kW (hp)	234 (318)
<b>Tires</b>		775/65 R29
<b>Log grapples</b>	m <sup>2</sup>	2,3-3,8
<b>Operating weight</b>	t	33,0-36,0

# BACKHOE LOADERS

## Main features

- High performance, low emission Volvo engines
- Hydraulic control valve features the “Flow Sharing” system giving fast and simultaneous movements
- Volvo exclusive self-levelling linkage, single cylinder offers an impressive digging force and excellent visibility
- Volvo, single, pilot-assisted loader joystick with integrated forward and reverse switch
- Deluxe cab with excellent sound proofing for high operator comfort and efficiency
- Excellent serviceability at ground level; rear tilting bonnet and grouped service points



		<b>BL61</b>	<b>BL61 Plus</b>
<b>Engine</b>	Volvo	D5D	D5D
<b>Max power</b> SAE J1995 gross	kW	64	70
Rated speed	r/min	2 200	2 200
<b>Max. torque</b> SAE J1995 gross	Nm	380	400
Rated speed	r/min	1 600	1 600
<b>Maximum speed</b> , forward/reverse	km/h	18,5/37	36,7
<b>Bucket breakout force Loader</b>	kN	43,9	47,9
<b>Lifting capacity</b> Loader	kg	2 691	2 922
<b>Bucket capacity</b> Loader	m <sup>3</sup>	0,8	0,8
<b>SAE digging depth</b> Backhoe (retracted/extended)	mm	4 211/5 275	4 258/5 321
<b>Bucket capacity</b> Backhoe	m <sup>3</sup>	0,07-0,31	0,07-0,31
<b>Bucket digging force</b> Backhoe	kN	52,8	52,8
<b>Operating weight</b>	t	8,17	8,17

		<b>BL71</b>	<b>BL71 Plus</b>
<b>Engine</b>	Volvo	D5D	D5D
<b>Max power</b> SAE J1995 gross	kW	70	75
Rated speed	r/min	2 200	2 200
<b>Max. torque</b> SAE J1995 gross	Nm	400	420
Rated speed	r/min	1 600	1 600
<b>Maximum speed</b> , forward/reverse	km/h	18,8/37,6	19,5/36,9
<b>Bucket breakout force Loader</b>	kN	53,8	53,8
<b>Lifting capacity</b> Loader	kg	3 154	3 154
<b>Bucket capacity</b> Loader	m <sup>3</sup>	1	1
<b>SAE digging depth</b> Backhoe (retracted/extended)	mm	4 292/5 354	4 292/5 354
<b>Bucket capacity</b> Backhoe	m <sup>3</sup>	0,07-0,31	0,07-0,31
<b>Bucket digging force</b> Backhoe	kN	59,1	59,1
<b>Operating weight</b>	t	8,59	8,59

# COMPACT EXCAVATORS

## Main features

- X-shaped undercarriage, as on heavier excavators: more rigidity and sturdiness
- Opening or tilting counterweight: direct access to components for easy maintenance
- Load Sensing hydraulic technology: full independence of movements for smooth and precise operation
- Maximum stability and high digging forces: maximum performance and productivity
- Great visibility and large cabs for more comfort



		<b>EC15BXR</b>	<b>EC15BXT</b>	<b>EC15BXTV</b>
<b>Engine</b>	Volvo	D1D	D1D	D1D
<b>Max power, SAE J1995 gross</b>	kW	12	12	12
Rated speed	r/min	2 200	2 200	2 200
<b>Width overall</b>	mm	980	980	980-1 330
<b>Boom offset, left/right</b>	°	80/60	80/60	80/60
<b>Maximum reach*</b>	m	3,71-3,94	3,71-3,94	3,71-3,94
<b>Digging depth*</b>	m	2,20-2,45	2,20-2,45	2,20-2,45
<b>Dump height*</b>	m	2,48-2,62	2,48-2,62	2,48-2,62
<b>Breakout force</b>	kN	15,1	15,1	15,1
<b>Tear out force</b>	kN	9,6	9,6	9,6
<b>Operating weight</b>				
Canopy version	t	1,48	1,54-1,59	1,64-1,69
Cab version	t	1,6	1,66-1,71	1,76-1,81

		<b>EC20BXT</b>	<b>EC20BXTV</b>
<b>Engine</b>	Volvo	D1D	D1D
<b>Max power, SAE J1995 gross</b>	kW	12	12
Rated speed	r/min	2 200	2 200
<b>Width overall</b>	mm	1 200	1 000-1 350
<b>Boom offset, left/right</b>	°	80/60	80/60
<b>Maximum reach*</b>	m	4,10-4,25	4,10-4,25
<b>Digging depth*</b>	m	2,57-2,81	2,57-2,81
<b>Dump height*</b>	m	2,67-2,82	2,67-2,82
<b>Breakout force</b>	kN	18,5	18,5
<b>Tear out force</b>	kN	12,5	12,5
<b>Operating weight</b>			
Canopy version	t	1,68-1,74	1,78-1,83
Cab version	t	1,81-1,86	1,9-1,96

\* Standard arm-long arm

# COMPACT EXCAVATORS

		<b>EC27C</b>	<b>EC35C</b>	<b>EC55C</b>
<b>Engine</b>	Volvo	D1.6D	D2.2D	D3.1D
<b>Max power, SAE J1995 gross</b>	kW	20,4	27,1	36,2
Rated speed	r/min	2 200	2 200	2 100
<b>Width overall</b>	mm	1 550	1 620	1 920
<b>Boom offset, left/right</b>	°	76/58	76/56	80/50
<b>Maximum reach*</b>	m	4,55-4,84	5,19-5,47	6,10-6,39
<b>Digging depth*</b>	m	2,80-3,10	3,43-3,71	3,75-4,05
<b>Dump height*</b>	m	3,16-3,34	3,53-3,7	4,14-4,33
<b>Breakout force</b>	kN	24,6	30,9	41,4
<b>Tear out force</b>	kN	18	22,4	28,4
<b>Operating weight</b>				
Canopy version	t	2,66-2,71	3,435	NA
Cab version	t	2,79-2,84	3,565	5,70

		<b>ECR28</b>	<b>ECR38</b>
<b>Engine</b>	Volvo	D1.2D	D1.6D
<b>Max power, SAE J1995 gross</b>	kW	14,4	20,4
Rated speed	r/min	2 200	2 200
<b>Width overall</b>	mm	1 500	1 620
<b>Boom offset, left/right</b>	°	70/50	70/50
<b>Maximum reach*</b>	m	4,47-4,70	5,04-5,27
<b>Digging depth*</b>	m	2,66-2,91	3,06-3,31
<b>Dump height*</b>	m	2,84-2,97	3,19-3,33
<b>Breakout force</b>	kN	19,7	28,8
<b>Tear out force</b>	kN	14,6	19,2
<b>Operating weight</b>			
Canopy version	t	2,73-2,83	3,34-3,39
Cab version	t	2,82-2,96	3,44-3,48

		<b>ECR48C</b>	<b>ECR58 Plus</b>	<b>ECR88 Plus</b>
<b>Engine</b>	Volvo	D2.2D	D3.1D	D3.4E
<b>Max power, SAE J1995 gross</b>	kW	27,1	38,2	43,8
Rated speed	r/min	2 200	2 100	2 100
<b>Width overall</b>	mm	1 950	2 000	2 300
<b>Boom offset, left/right</b>	°	76/56	70/60	70/60
<b>Maximum reach*</b>	m	5,8-6,18	6,08-6,46	7,01-7,39
<b>Digging depth*</b>	m	3,66-4,03	3,85-4,24	4,47-4,87
<b>Dump height*</b>	m	3,6-3,82	3,97-4,21	4,86-5,12
<b>Breakout force</b>	kN	34,2	39	59
<b>Tear out force</b>	kN	25,5	27	41
<b>Operating weight</b>				
Canopy version	t	4,7	NA	NA
Cab version	t	4,8	5,88-5,97	8,45-8,65

\* Standard arm-long arm

# WHEELED EXCAVATORS

## Main features

- Volvo Care Cab improves comfort with an adjustable seat, ergonomics and isolated cab mountings
- More intelligent electronic climate control system delivers the highest-capacity heating and cooling available
- Extensive windshield wiping area, including both upper corners
- Durable aluminum radiator and charged-air cooler
- Compact rear tail radius and a low engine hood
- Unique superstructure alignment system via position sensor
- One-way travel pedal with rocker switch control (F-N-R) on the right joystick
- Advanced downhill retardation
- Adjustable, easy-to-read 16,3 cm (6,4") color LCD monitor for real-time information and trouble-shooting
- Built-in service display on the LCD monitor – plus advanced tools (VCADS, MATRIS)
- Unique digging brake features automatic engagement/disengagement for superior productivity
- Attachment management system provides optimal flow and pressure adjustment
- Optional quick fit systems make bucket/tool changing easy
- +/- 9° oscillating front axle for excellent off-road travel
- Bolt-on, flexible bottom step provides greater damage resistance and is easy to replace
- More commonality between Volvo Wheeled and Crawler Excavators to lower owning/operating costs



		<b>EW140C mono boom</b>	<b>EW160C mono boom</b>	<b>EW180C mono boom</b>
<b>Engine</b>	Volvo	D5E	D6E	D6E
<b>Max power, at</b>	r/s (r/min)	33,3 (2 000)	30,0 (1 800)	31,6 (1 900)
ISO 9249/DIN 6271, net	kW (hp)	91 (122)	106 (142)	113 (152)
<b>Wheel base</b>	mm	2 600	2 600	2 650
<b>Max. travel speed</b>	km/h	20,0/30,0/35,0	20,0/30,0/35,0	20,0/30,0/35,0
<b>Bucket capacity</b>	m <sup>3</sup>	0,65-0,98*	0,70-1,03*	0,85-1,08*
<b>Lifting capacity</b>				
along undercarriage	t	4,6	5,2	7,8
at reach/height	m	6,0/1,5	6,0/1,5	6,0/1,5
<b>Breakout force, SAE</b>	kN	94	108	115,8
<b>Max. digging reach</b>	m	9	9,6	9,6
<b>Max. digging depth</b>	m	5,7	6,2	6,2
<b>Operating weight</b>	t	14,4-15,6	16,4-17,7	18,0-19,5

\* Direct fit GP buckets, rounded values

# WHEELED EXCAVATORS

		<b>EW210C mono boom</b>	<b>EW230C mono boom**</b>	<b>EW140C 2-piece boom</b>
<b>Engine</b>	Volvo	D6E	D6E	D5E
<b>Max power, at</b>	r/s (r/min)	31,6 (1 900)	33,3 (2 000)	33,3 (2 000)
ISO 9249/DIN 6271, net	kW (hp)	120 (161)	125 (168)	91 (122)
<b>Wheel base</b>	mm	2 750	2 750/2 850	2 600
<b>Max. travel speed</b>	km/h	20,0/25,0/30,0	20,0/25,0	20,0/30,0/35,0
<b>Bucket capacity</b>	m <sup>3</sup>	0,93-1,13*	1,23-1,50*	0,58-0,88*
<b>Lifting capacity</b>				
along undercarriage	t	8,1	8,8	4,5
at reach/height	m	6,0/1,5	6,0/1,5	6,0/1,5
<b>Breakout force, SAE</b>	kN	124,2	141,8	94
<b>Max. digging reach</b>	m	10,1	10,5	9,3
<b>Max. digging depth</b>	m	6,6	6,8	5,7
<b>Operating weight</b>	t	19,9-21,5	23,1-24,8	14,6-15,8

		<b>EW160C</b> <b>2-piece boom</b>	<b>EW180C</b> <b>2-piece boom</b>	<b>EW210C</b> <b>2-piece boom**</b>	<b>EW230C</b> <b>2-piece boom**</b>
<b>Engine</b>	Volvo	D6E	D6E	D6E	D6E
<b>Max power, at</b>	r/s (r/min)	30,0 (1 800)	31,6 (1 900)	31,6 (1 900)	33,3 (2 000)
ISO 9249/DIN 6271, net	kW (hp)	106 (142)	113 (152)	120 (161)	125 (168)
<b>Wheel base</b>	mm	2 600	2 650	2 750	2 750/2 850
<b>Max. travel speed</b>	km/h	20,0/30,0/35,0	20,0/30,0/35,0	20,0/25,0/30,0	20,0/25,0
<b>Bucket capacity</b>	m <sup>3</sup>	0,68–1,00*	0,80–1,03*	0,90–1,10*	1,18–1,45*
<b>Lifting capacity</b>					
along undercarriage	t	5,3	7,1	7,8	8,3
at reach/height	m	6,0/1,5	6,0/1,5	6,0/1,5	6,0/1,5
<b>Breakout force, SAE</b>	kN	108	115,8	124,2	141,8
<b>Max. digging reach</b>	m	9,8	9,8	10,1	10,5
<b>Max. digging depth</b>	m	6,2	6,4	6,5	6,8
<b>Operating weight</b>	t	16,7–18,0	18,6–20,1	20,6–22,2	23,9/25,6

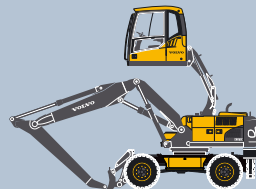
\* Direct fit GP buckets, rounded values    \*\* Values for machines with heavy counterweight

# WHEELED EXCAVATORS

## ELEVATED CAB

### Main features

- Hydraulically elevated Volvo Care Cab, raising the operator's line-of-sight to more than 5 meters: commanding view, outstanding maneuverability and stability in small, densely filled, urban or inner-city indoor waste and recycling yards. In its lowered position, cab allows easy and safe entry for the operator
- Micro mesh doors – hinged type (optional), protecting the engine and cooling department from ingress of dust and debris
- Sealing of cooler compartment area (optional), increasing service-intervals and cooling efficiency
- Reversible cooling fan and engine air intake pre-cleaner available to keep the engine and filters cleaner in dusty applications, leading to more uptime and reliability
- Dust net for radiator and oil cooler (optional) for extra filtration leading to higher cooling efficiency and more uptime



**EW160C  
with elevated cab**

<b>Engine</b>	Volvo	D6E EDE3
<b>Max power, at</b>	r/s (r/min)	30,0 (1 800)
ISO 9249/DIN 6271, net	kW (hp)	106 (144)
SAE J1995, gross	kW (hp)	115 (156)
<b>Max. torque at 1 350 rpm</b>	Nm	730
<b>Max. digging reach</b>		
Mono boom	m	9,63
2-piece boom	m	9,78
<b>Max. digging depth</b>		
Mono boom	m	6,24
2-piece boom	m	6,22
<b>Max. cab height</b>		
Fully raised	m	5,60
<b>Operating weight</b>	t	16,8–18,5

# CRAWLER EXCAVATORS

## Main features

- Volvo Care Cab with operator protective structure
- More intelligent electronic climate control system delivers the highest-capacity heating and cooling available
- Extensive windshield wiping area, including both upper corners
- Optional quick fit systems make bucket/tool changing easy
- New generation Volvo V-ACT engines are powerful, innovative and efficient
- Volvo continues to deliver industry-leading fuel efficiency
- Standard high-capacity alternator
- Anti-slip steps and platforms with punched steel plates for superior grip
- Adjustable, easy-to-read 16,3 cm (6,4") color LCD monitor for real-time information and trouble-shooting
- Common oil drain with valve is quick and easy
- Built-in service display on the LCD monitor – plus advanced tools (VCADS, MATRIS)
- Boom, arm and bucket regeneration
- Hydraulically-driven cooling fan with computer-automated fan speed control
- Reinforced frame and track motor piping protection



		<b>EC140C</b>	<b>EC140CL</b>	<b>EC140CLM</b>	<b>ECR145CL</b>
<b>Engine</b>	Volvo	D4E EBE3	D4E EBE3	D4E EBE3	D4E EAE3
<b>Rated output at</b>	r/s (r/min)	33 (2 000)	33 (2 000)	33 (2 000)	33 (2 000)
ISO 9249, SAE J1349, net	kW (hp)	69 (94)	69 (94)	69 (94)	69 (94)
Gross (SAE J1995)	kW (hp)	80 (109)	80 (109)	80 (109)	80 (109)
<b>Track length</b>	mm	3 560	3 760	3 790	3 750
<b>Track gauge</b>	mm	1 990	1 990	1 990	1 990
<b>Bucket capacity</b>	m <sup>3</sup>	0,55-0,93	0,55-0,93	0,55-0,93	0,53-0,88
<b>Lifting capacity</b>					
along undercarriage	t	3,2	3,6	3,7	3,6
at reach/height	m	6,0/1,5	6,0/1,5	6,0/1,5	6,0/1,5
<b>Breakout force, SAE</b>	kN	87,3	87,3	87,3	85,7
<b>Max. digging reach</b>	m	8,3	8,3	8,3	8,4
<b>Max. digging depth</b>	m	5,5	5,5	5,3	5,5
<b>Operating weight</b>	t	12,8-13,1	13,3-14,8	14,2-15,0	14,8-15,9

		<b>EC160CL</b>	<b>EC160CNL</b>	<b>EC180CL</b>	<b>EC210CL</b>
<b>Engine</b>	Volvo	D6E EBE3	D6E EBE3	D6E EBE3	D6E EFE3
<b>Rated output at</b>	r/s (r/min)	30 (1 800)	30 (1 800)	30 (1 800)	30 (1 800)
ISO 9249, SAE J1349, net	kW (hp)	87 (118)	87 (118)	87 (118)	110 (150)
Gross (SAE J1995)	kW (hp)	98 (133)	98 (133)	98 (133)	123 (167)
<b>Track length</b>	mm	3 980	3 980	4 166	4 460
<b>Track gauge</b>	mm	2 200	1 990	2 200	2 390
<b>Bucket capacity</b>	m <sup>3</sup>	0,68-1,23	0,68-1,13	0,58-1,23	0,83-1,43
<b>Lifting capacity</b>					
along undercarriage	t	4,9	4,8	5,3	7,1
at reach/height	m	6,0/1,5	6,0/1,5	6,0/1,5	6,0/1,5
<b>Breakout force, SAE</b>	kN	105,2	105,2	105,2	130,4
<b>Max. digging reach</b>	m	9,0	9,0	9,0	9,9
<b>Max. digging depth</b>	m	6,0	6,0	6,0	6,7
<b>Operating weight</b>	t	16,8-19,1	16,7-18,9	18,3-19,2	21,7-23

		<b>EC210CN</b>	<b>EC210CNL</b>	<b>EC210CLR</b>	<b>ECR235CL</b>
<b>Engine</b>	Volvo	D6E EFE3	D6E EFE3	D6E EAE3	D6E EAE3
<b>Rated output at</b>	r/s (r/min)	30 (1 800)	30 (1 800)	30 (1 800)	30 (1 800)
ISO 9249, SAE J1349, net	kW (hp)	110 (150)	110 (150)	110 (150)	110 (150)
Gross (SAE J1995)	kW (hp)	123 (167)	123 (167)	123 (167)	123 (167)
<b>Track length</b>	mm	4 170	4 460	4 460	4 460
<b>Track gauge</b>	mm	2 200	2 040	2 390	2 390
<b>Bucket capacity</b>	m <sup>3</sup>	0,78–1,33	0,78–1,3	0,52	0,95–1,3
<b>Lifting capacity</b>					
along undercarriage	t	6,6	7,1	2,8	7,5
at reach/height	m	6,0/1,5	6,0/1,5	10,5/1,5	6,0/1,5
<b>Breakout force, SAE</b>	kN	130,4	130,4	68,6	124,7
<b>Max. digging reach</b>	m	9,9	9,9	15,8	9,9
<b>Max. digging depth</b>	m	6,7	6,7	12,1	6,8
<b>Operating weight</b>	t	21,4–22,4	22,1–23,1	23,2	23,8–26,1

		<b>EC235CNL</b>	<b>EC240CL</b>	<b>EC240CNL</b>	<b>EC240CLR</b>
<b>Engine</b>	Volvo	D6E EAE3	D7E EBE3	D7E EBE3	D7E EBE3
<b>Rated output at</b>	r/s (r/min)	30 (1 800)	30 (1 800)	30 (1 800)	30 (1 800)
ISO 9249, SAE J1349, net	kW (hp)	113 (154)	125 (170)	125 (170)	125 (170)
Gross (SAE J1995)	kW (hp)	126 (171)	138 (188)	138 (188)	138 (187)
<b>Track length</b>	mm	4 360	4 650	4 650	4 650
<b>Track gauge</b>	mm	2 040	2 590	2 390	2 590
<b>Bucket capacity</b>	m <sup>3</sup>	0,85–1,40	0,98–1,83	0,8–1,68	0,52
<b>Lifting capacity</b>					
along undercarriage	t	7,6	9,1	9,1	3,3
at reach/height	m	6,0/1,5	6,0/1,5	6,0/1,5	10,5/1,5
<b>Breakout force, SAE</b>	kN	150	156,9	156,9	68,6
<b>Max. digging reach</b>	m	9,1	10,3	10,3	18,3
<b>Max. digging depth</b>	m	5,8	7,0	7,0	14,4
<b>Operating weight</b>	t	23,6–25,0	25,3–26,0	25,2–26,1	27,7

		<b>EC290CL</b>	<b>EC290CNL</b>	<b>EC290CLR</b>	<b>ECR305CL</b>	<b>EC360CL</b>
<b>Engine</b>	Volvo	D7E EAE3	D7E EAE3	D7E EAE3	D7E EAE3	D12D EBE3
<b>Rated output at</b>	r/s (r/min)	30 (1 800)	30 (1 800)	30 (1 800)	30 (1 800)	28 (1 700)
ISO 9249, SAE J1349, net	kW (hp)	143 (194)	143 (194)	143 (194)	143 (194)	184 (250)
Gross (SAE J1995)	kW (hp)	153 (208)	153 (208)	153 (208)	153 (208)	198 (269)
<b>Track length</b>	mm	4 870	4 870	4 870	4 950	5 180
<b>Track gauge</b>	mm	2 590	2 390	2 590	2 740	2 740
<b>Bucket capacity</b>	m <sup>3</sup>	1,08-1,95	0,95-1,73	0,52-0,57	1,23-1,95	1,53-2,78
<b>Lifting capacity</b>						
along undercarriage	t	10,8	10,8	4,2	11,0	11,3
at reach/height	m	6,0/1,5	6,0/1,5	10,5/1,5	6,0/1,5	7,5/1,5
<b>Breakout force, SAE</b>	kN	173	173	69,1	173	209,0
<b>Max. digging reach</b>	m	10,7	10,7	18,6	10,6	11,2
<b>Max. digging depth</b>	m	7,3	7,3	14,8	7,0	7,5
<b>Operating weight</b>	t	29,2-30,5	29,0-30,4	32,1	33,8-37,0	38,3-39,7

		<b>EC360CNL</b>	<b>EC460CL</b>	<b>EC460CL Retrac</b>	<b>EC700CL</b>
<b>Engine</b>	Volvo	D12D EBE3	D12D EAE3	D12D EAE3	D16E EAE3
<b>Rated output at</b>	r/s (r/min)	28 (1 700)	30 (1 800)	30 (1 800)	30 (1 800)
ISO 9249, SAE J1349, net	kW (hp)	184 (250)	235 (320)	235 (320)	316 (430)
Gross (SAE J1995)	kW (hp)	198 (269)	245 (333)	245 (333)	346 (470)
<b>Track length</b>	mm	5 180	5 370	5 370	5 990
<b>Track gauge</b>	mm	2 390	2 740	2 890	3 350
<b>Bucket capacity</b>	m <sup>3</sup>	1,35-2,45	1,78-3,5	1,9-3,8	2,48-6,6
<b>Lifting capacity</b>					
along undercarriage	t	11,0	13,8	13,2	17,2
at reach/height	m	7,5/1,5	7,5/1,5	7,5/1,5	9,0/1,5
<b>Breakout force, SAE</b>	kN	209,0	244,2	244,2	374
<b>Max. digging reach</b>	m	11,2	12,0	12,5	11,5
<b>Max. digging depth</b>	m	7,5	7,7	8,1	7,3
<b>Operating weight</b>	t	38,0-39,4	45,6-47,1	46,6-48,3	69,3-71,7

# CRAWLER EXCAVATORS

## ELEVATED CAB

### Main features

- Hydraulically elevated Volvo Care Cab, raising the operator's line-of-sight to more than 5 meters: commanding view, outstanding maneuverability and stability in small, densely filled, urban or inner-city indoor waste and recycling yards. In its lowered position, cab allows easy and safe entry for the operator

The optional available waste package includes:

- Micro mesh doors – hinged type, protecting the engine and cooling department from ingress of dust and debris

- Sealing of cooler compartment area, increasing service-intervals and cooling efficiency
- Reversible cooling fan and engine air intake pre-cleaner available to keep the engine and filters cleaner in dusty applications, leading to more uptime and reliability
- Dust net for radiator and oil cooler for extra filtration leading to higher cooling efficiency and more uptime



**EC210C**  
**with elevated cab**

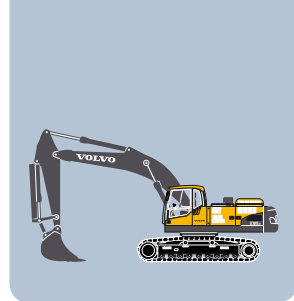
<b>Engine</b>	Volvo	D6E EAE3
<b>Max power, at</b>	r/s (r/min)	30,0 (1 800)
ISO 9249/DIN 6271, net	kW (hp)	110 (150)
SAE J1995, gross	kW (hp)	123 (167)
<b>Max. torque at 1 350 rpm</b>	Nm	735
<b>Max. digging reach</b>		
Mono boom	m	10,39
2-piece boom	m	9,84
<b>Max. digging depth</b>		
Mono boom	m	7,33
2-piece boom	m	6,3
<b>Max. cab height</b>		
Fully raised	m	5,47
<b>Operating weight</b>	t	22,15–23,85

# CRAWLER EXCAVATORS

## STANDARD DEMOLITION

### Main features

- Demolition guarding: frame-mounted falling object guard (FOG), bolted side impact protection system, double-thickness side doors, bucket and boom cylinder guards that protect rods, cylinders and piping
- Undercarriage protection: full-length track-chain guards, thick 10 mm under plating with bolt-head protection, an 8 mm swing-ring guard and hinged service panels with recessed hinges
- Optional, reversible cooling fan and micro mesh screens on the side doors and engine cowl to reduce effects of dust and airborne debris



		<b>EC210CLD</b>	<b>EC240CLD</b>	<b>EC290CLD</b>	<b>EC360CLD</b>
<b>Engine</b>	Volvo	D6E	D7E	D7E	D12D
<b>Rated output at</b>	r/s (r/min)	30 (1 800)	30 (1 800)	30 (1 800)	28 (1 700)
ISO 9249, SAE J1349, net	kW (hp)	110 (150)	125 (170)	143 (195)	184 (250)
<b>Bucket capacity</b>	m <sup>3</sup>	0,8–1,4	1–1,8	1,37–2,55	1,5–2,8
<b>System pressure (attm.)</b>	Mpa	31,4	31,4	31,4	31,4
with power boost (attm.)	Mpa	34,3	34,3	34,3	34,3
<b>Max. flow rate</b>	l/min	2 x 200	2 x 230	2 x 250	2 x 280
<b>Lifting capacity</b>					
along undercarriage	t	7,1	9,1	10,8	11,3
at reach/height	m	6,0/1,5	6/1,5	6/1,5	7,5/1,5
<b>Operating weight</b>					
without attachment	t	21,7–23	25,3–26,2	29,1–30,4	38,3–39,7

		<b>EC460CLD</b>	<b>EC700CLD</b>
<b>Engine</b>	Volvo	D12D	D16E
<b>Rated output at</b>	r/s (r/min)	30 (1 800)	30 (1 800)
ISO 9249, SAE J1349, net	kW (hp)	235 (320)	316 (430)
<b>Bucket capacity</b>	m <sup>3</sup>	1,8–3,5	2,5–6,6
<b>System pressure (attm.)</b>	Mpa	31,4	31,4
with power boost (attm.)	Mpa	34,3	34,3
<b>Max. flow rate</b>	l/min	2 x 345	2 x 436
<b>Lifting capacity</b>			
along undercarriage	t	13,8	20
at reach/height	m	7,5/1,5	7,5/1,5
<b>Operating weight</b>			
without attachment	t	45,6–48,3	68,3–70,6

# CRAWLER EXCAVATORS

## HIGH REACH DEMOLITION

### Main features

- 17-32 m High Reach Boom and optimum hydraulic capacity and flow to power high-reach attachments such as pulverizers, hammers, shears etc
- The standard hydraulically tilting cab tilts up to 30 degrees to enhance visibility and reduce operator fatigue and neck strain on high-reach jobs
- Excellent stability and safety thanks to a long undercarriage, extra modular counterweight, boom and arm holding valves, optional slew-reduction control, and a Total Moment Indicator that warns the operator if the machine approaches the maximum safe working load
- Easy and quick change from demolition configuration to straight or regular boom thanks to the innovative Volvo modular joint system
- Optional hydraulically variable undercarriage width for easier transport and for optimal stability



		<b>EC360CHR</b>	<b>EC460CHR</b>	<b>EC700BHR</b>
<b>Engine</b>	Volvo	D12D	D12D	D16E
<b>Rated output at</b>	r/s (r/min)	28 (1 700)	30 (1800)	30 (1 800)
ISO 9249, SAE J1349, net	kW (hp)	184 (250)	235 (320)	316 (430)
<b>Max. pin height</b>	m	21	27.25	29-32
<b>Max. forward reach</b>	m	12,8	16.60	19,6
<b>Max. attachment weight</b>				
at 21m pin height	t	3	-	-
at 29 m pin height	t	-	-	3,5
at 32 m pin height	t	-	-	2,5
<b>Cab tilting angle</b>	°	30°	30°	30°
<b>Track gauge</b>				
with hydraulic variable undercarriage	mm	2 390-3 390	2 390-3 390	2 740-3 740
<b>Operating weight</b>				
without attachment	t	43-46,3	63	81,5-88,5

# ARTICULATED HAULERS

## Main features

- Excellent operator environment contributes to high productivity from the beginning to the end of the shift. A reliable three-point front suspension gives comfortable smooth ride
- Good overall visibility and low sound level in the cab. Volvo has the lowest sound levels in the industry
- Maintenance free suspensions, straddle mounted bogie beam gives large wheel movement and low frame stress. Front axle with durable three-point suspension
- Full suspension with automatic leveling and stabilizer provides excellent offroad performance and improved productivity
- Volvo's unique self-compensating hydro-mechanical steering, easy highspeed driving and steering accuracy promoting productivity. Powerful when in rough conditions
- Well matched components in a Volvo designed power train, specifically developed for the Articulated haulers. Low power losses and long service life
- Volvo exhaust brake and retarder reduces service brake wear and operating cost
- Extended service intervals. Level checks – on the Contronic instrument panel. No daily or weekly service. Swing down front. Service platform reduce service time



		<b>A25E 4x4</b>	<b>A25E</b>	<b>A30E</b>	<b>A35E</b>
<b>Engine</b>	Volvo	D9B	D9B	D9B	D12D
<b>Max power, at</b>	r/s (r/min)	35 (2 100)	35 (2 100)	31,7 (1 900)	30 (1 800)
SAE J1995 gross	kW (hp)	224 (305)	224 (305)	252 (343)	313 (426)
SAE J1349 net	kW (hp)	223 (303)	223 (303)	251 (341)	309 (420)
<b>Max torque, at</b>	r/s (r/min)	20 (1 200)	20 (1 200)	20 (1 200)	20 (1 200)
SAE J1349 gross	Nm (lb ft)	1 700 (1 254)	1 700 (1 254)	1 700 (1 254)	2 100 (1 549)
SAE J1349 net	Nm (lb ft)	1 689 (1 246)	1 689 (1 246)	1 689 (1 246)	2 056 (1 547)
<b>Max. speed</b>	km/h (mile/h)	53 (33)	53 (33)	53 (33)	57 (35,4)
<b>Load capacity</b>	kg (sh tn)	24 000 (26,5)	24 000 (26,5)	28,000 (31)	33 500 (37)
SAE 2:1 heap	m <sup>3</sup> (yd <sup>3</sup> )	13 (17)	15 (19,6)	17,5 (22,9)	20,5 (26,8)
<b>Net weight</b>	kg (lb)	19 500 (42 990)	21 600 (47 619)	23 100 (50 926)	28 100 (61 950)
<b>Gross weight</b>	kg (lb)	43 500 (95 900)	45 600 (100 530)	51 100 (112 656)	61 600 (135 805)

		<b>A40E</b>	<b>A35EFS</b>	<b>A40EFS</b>
<b>Engine</b>	Volvo	D16E	D12D	D16E
<b>Max power, at</b>	r/s (r/min)	30 (1 800)	30 (1 800)	30 (1 800)
SAE J1995 gross	kW (hp)	350 (476)	313 (426)	350 (476)
SAE J1349 net	kW (hp)	346 (471)	309 (420)	346 (471)
<b>Max torque, at</b>	r/s (r/min)	20 (1 200)	20 (1 200)	20 (1 200)
SAE J1349 gross	Nm (lb ft)	2 525 (1 862)	2 100 (1 549)	2 525 (1 862)
SAE J1349 net	Nm (lb ft)	2 493 (1 837)	2 056 (1 547)	2 493 (1,837)
<b>Max. speed</b>	km/h (mile/h)	57 (35,4)	57 (35,4)	57 (35,4)
<b>Load capacity</b>	kg (sh tn)	39 000 (43)	33 500 (37)	39 000 (43)
SAE 2:1 heap	m <sup>3</sup> (yd <sup>3</sup> )	24,0 (31,4)	20,5 (26,8)	24,0 (31,4)
<b>Net weight</b>	kg (lb)	30 200 (66 580)	28 500 (62 832)	30 600 (67 461)
<b>Gross weight</b>	kg (lb)	69 200 (152 560)	62 000 (136 686)	69 600 (153 442)

# MOTOR GRADERS

## Main features

G900 Motor Graders feature several breakthrough 'best in class' innovations such as the industry's first, 11 speed transmission which improves productivity and lowers fuel consumption. A Volvo exclusive!

Three power ranges are standard, the G900 Motor Graders feature high torque at low engine rpm's providing superior performance and low fuel consumption.

Designed with extensive operator input, the G900 cab has great visibility, low noise levels and low effort controls. It all adds up to a 'great place to spend the working day'.

Superior blade mobility, excellent blade down pressure and pull means high productivity.

Proportional Demand Flow (PDF) hydraulics are smooth and consistent and are ideal for Automatic Blade Control systems such as GPS.

Transmission developed for Motor Grader applications feature:

- Direct drive, full powershift
- Single lever shifter with integrated park brake control
- Sequential shift with electronic engine over-speed protection
- Shuttle shifting is an easy to use straight-line, shift pattern allowing forward to reverse shifts (and vice versa) without using the inching pedal or stopping first – reduces cycle times and operator fatigue

Standard transmission is the HTE840 with 8 forward and 4 reverse gears. Optional is the exclusive HTE1160 with 11 speeds forward and 6 speeds reverse.

G946 and G976 can be operated in 2, 4 or 6 wheel drive modes. Front 2 wheel drive mode provides exceptional smooth control in fine grad applications. A Volvo exclusive!



		<b>G930</b>	<b>G940</b>	<b>G946</b>	<b>G960</b>
<b>Engine</b>	Volvo	D7E	D7E	D7E	D7E
<b>Net engine power</b>					
Low Range	kW (hp)	115 (155)	130 (175)	145 (195)*	145 (195)
Mid Range	kW (hp)	130 (175)	145 (195)	160 (215)*	160 (215)
High	kW (hp)	145 (195)	160 (215)	175 (235)*	175 (235)
<b>Overall length</b>	mm	8 930	9 150	9 150	9 150
<b>Wheelbase</b>	mm	6 280	6 280	6 280	6 280
<b>Blade pull @.9 coefficient</b>	kg	9 990	10 530	14 925*	11 205
<b>Blade down pressure</b>	kg	8 188	8 131	8 650	8 823
<b>Operating weight</b>	kg	15 800	16 400	17 300	17 550

		<b>G970</b>	<b>G976</b>	<b>G990</b>
<b>Engine</b>	Volvo	D9B	D9B	D9B
<b>Net engine power</b>				
Low Range	kW (hp)	156 (210)	168 (225)*	168 (225)
Mid Range	kW (hp)	171 (230)	183 (245)*	183 (245)
High	kW (hp)	186 (250)	198 (265)*	198 (265)
<b>Overall length</b>	mm	9500	9 500	9 730
<b>Wheelbase</b>	mm	6 531	6 531	6 681
<b>Blade pull @.9 coefficient</b>	kg	12 240	16 635*	14 310
<b>Blade down pressure</b>	kg	9 253	9 776	11 058
<b>Operating weight</b>	kg	18 900	19 800	22 100

\* With AWD engaged

# MILLING EQUIPMENT

## Main features

- Small milling machine with the technology of a big one
- Future-orientated Operating Concept EPM
- Patented LINE Manager Technology
- Digital Control with graphical display
- Water tank designed for long working cycles and increased productivity
- Superior Safety Concept
- Best Serviceability and Maintainability



**MW500**

<b>Engine</b>	Deutz	TCD2012L04 2V
<b>Power</b>	kW	95
<b>Number of Wheels</b>		4
<b>Milling width</b>	mm	500
<b>Milling depth</b>	mm	210
<b>Working speed</b>	m/min	35
<b>Theoretical Conveyor Capacity</b>	m <sup>3</sup> /min	80
<b>Water Tank Capacity</b>	l	600
<b>Operating weight</b>		
without conveyor	t	8,1

# PAVERS

## Main features

- Designed with global technology and valuable input from our customers
- Ample reserve power, robust and sturdy design and high paving outputs for maximum reliability and cost-effectiveness
- Unique EPM operating panel – widely recognised as the most intuitive system on the market
- Exemplary ease of operation, exceptional ergonomics and excellent all-round vision
- Volvo “Smart Power”, a synonym for reduced noise emissions and more economic machine operation
- Phenomenal traction and class-leading manoeuvrability
- Optimised access to the service points allow for easy maintenance



		<b>ABG2820</b>	<b>ABG5820</b>	<b>ABG6820</b>
<b>Engine</b>	Deutz	TD2011L04	TCD2013L04 2V	TCD2013L04 2V
<b>Maximum Paving Width</b>	m	4,0	8,0	8,0
<b>Power</b>	kW	63	112	125
<b>Propulsion</b>		Tracked	Tracked	Tracked
<b>Paving speed</b>	m/min	29,0	20,0	20,0

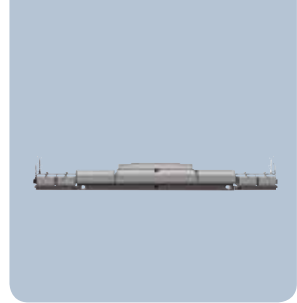
		<b>ABG7820</b>	<b>ABG8820</b>	<b>ABG9820</b>
<b>Engine</b>	Deutz	TCD2013L06 2V	TCD2013L06 2V	TCD2015V06 4V
<b>Maximum Paving Width</b>	m	10,0	13,0	16,0
<b>Power</b>	kW	170	182	273
<b>Propulsion</b>		Tracked	Tracked	Tracked
<b>Paving speed</b>	m/min	20,0	20,0	60,0

		<b>ABG5770</b>	<b>ABG5870</b>	<b>ABG6870</b>
<b>Engine</b>	Deutz	TCD2013L04 2V	TCD2013L04 2V	TCD2013L04 2V
<b>Maximum Paving Width</b>	m	7,5	8,0	9,0
<b>Power</b>	kW	122	122	122
<b>Propulsion</b>		Wheeled	Wheeled	Wheeled
<b>Paving speed</b>	m/min	40,0	40,0	40,0

# SCREEDS

## Main features

- Volvo screeds combine efficiency and cost-effectiveness in a modern and compact design
- Exemplary operating convenience and superior ease of maintenance
- The unique double tamper technology helps customers around the World to achieve the highest levels of precompaction
- Patented quick-coupling system makes the mounting of screed extensions quicker and safer
- Patented screed guide system on Volvo Vario Screeds
- Patented, remote controlled hydraulic crown adjustment
- The Volvo heating system raises the screed to operating temperature quickly and economically



		<b>MB120</b>	<b>MB120 Vario</b>	<b>MB122</b>	<b>MB122 Vario</b>	<b>VB30</b>	<b>VB78ETC</b>
<b>Screen width</b>	m	3,00	3,00	2,5	2,5	1,50	2,50
<b>Standard Paving Width</b>	m	3-16	9,5-12,5	2,5-12	9-12	1,5-3	2,5-5
<b>Max Paving Depth*</b>	mm	500	500	300	300	250	300
<b>Screed Heat Type</b>		Gas	Gas	Gas	Gas	Electric	Electric

		<b>VB78GTC</b>	<b>VB-T78ETC</b>	<b>VB-T78GTC</b>	<b>VB79ETC</b>	<b>VB88ETC</b>	<b>VB88GTC</b>
<b>Screen width</b>	m	2,50	2,50	2,50	2,50	3,00	3,00
<b>Standard Paving Width</b>	m	2,5-5	2,5-5	2,5-5	2,5-5	3-6	3-6
<b>Max Paving Depth*</b>	mm	300	300	300	300	500	500
<b>Screed Heat Type</b>		Gas	Electric	Gas	Electric	Electric	Gas

		<b>VB89ETC</b>	<b>VDT120</b>	<b>VDT120 Vario</b>	<b>VDT121</b>	<b>VDT121 Vario</b>	<b>VDT-V78ETC</b>
<b>Screen width</b>	m	3,00	3,00	3,00	2,50	2,50	2,50
<b>Standard Paving Width</b>	m	3-6	3-13	9,5-12,5	2,5-13	9-12	2,5-5
<b>Max Paving Depth*</b>	mm	300	500	500	300	300	300
<b>Screed Heat Type</b>		Electric	Gas	Gas	Gas	Gas	Electric

		<b>VDT-V78GTC</b>	<b>VDT-V79ETC</b>	<b>VDT-V88ETC</b>	<b>VDT-V88GTC</b>	<b>VDT-V89ETC</b>
<b>Screen width</b>	m	2,50	2,50	3,00	3,00	3,00
<b>Standard Paving Width</b>	m	2,5-5	2,5-5	3-6	3-6	3-6
<b>Max Paving Depth*</b>	mm	300	300	500	500	300
<b>Screed Heat Type</b>		Gas	Electric	Electric	Gas	Electric

\* Depends on the type of pavers used

# ASPHALT COMPACTORS

## Main features

- Volvo asphalt compactors have been designed to help customers deliver maximum productivity, density, and smoothness
- They feature advanced designs in operator comfort and visibility, and the industry's best water system
- Ground-level access to all maintenance points allows for superior serviceability
- The large models offer an electronically controlled steering system for exceptional manoeuvrability and precision



		<b>CR24</b>	<b>DD14S</b>	<b>DD16</b>	<b>DD22</b>	<b>DD24</b>	<b>DD31HF</b>
<b>Operating weight w/ROPS*</b>	kg	2 604	1 519	1 619	2 450	2 600	3 102
<b>Drum width</b>	mm	1 200	900	1 000	1 000	1 200	1 250
<b>Vibration frequency</b>	Hz	66,7	66,7	66,7	55/57	55/67	70
<b>Amplitude</b>	mm	32	15,6	17,8	25/37	28/40	36

		<b>DD38HF</b>	<b>DD85</b>	<b>DD95</b>
<b>Operating weight w/ROPS*</b>	kg	3 809	8 750	9 650
<b>Drum width</b>	mm	1 375	1 680	1 680
<b>Vibration frequency</b>	Hz	70	40/50	40/50
<b>Amplitude</b>	mm	36	67/82	67/82

# SOIL COMPACTORS

## Main features

- Volvo soil compactors are built to deliver maximum performance, excellent gradeability and class leading compaction forces
- The premium shock mounted cabin vouches for safe and productive operating hours with excellent comfort
- DX-versions feature 5 variable frequency settings, which allow the operator to adapt the vibration to the material
- Excellent accessibility makes daily routine maintenance easy and time-efficient



		<b>SD25D</b>	<b>SD25F</b>	<b>SD45D</b>	<b>SD45F</b>	<b>SD70D</b>	<b>SD77DX</b>
<b>Operating weight</b>	kg	2 562	2 685	4 807	5 147	7 595	7 595
<b>Drum width</b>	mm	1 067	1 067	1 372	1 372	1 676	1 676
<b>Vibration frequency</b>	Hz	36,7	36,7	31,7	31,7	30,8/33,8	23,3-33,8
<b>Amplitude</b>	mm	1,55	1,40	1,98	1,71	1,98/1,20	1,98/1,20

		<b>SD77F</b>	<b>SD115D</b>	<b>SD115F</b>	<b>SD122D</b>	<b>SD122DX</b>	<b>SD122F</b>
<b>Operating weight</b>	kg	7 995	11 490	12 020	12 515	12 515	13 425
<b>Drum width</b>	mm	1 676	2 134	2 134	2 134	2 134	2 134
<b>Vibration frequency</b>	Hz	23,3-33,8	23,3-33,8	23,3-33,8	30,8/33,8	23,3-33,8	23,3-33,8
<b>Amplitude</b>	mm	1,98/1,33	1,92/1,29	2,14/1,39	1,90/1,17	1,90/1,17	2,03/1,31

		<b>SD160DX</b>	<b>SD160F</b>	<b>SD190DX</b>	<b>SD200DX</b>	<b>SD200F</b>
<b>Operating weight</b>	kg	16 199	16 489	19 645	20 643	20 328
<b>Drum width</b>	mm	2 134	2 134	2 134	2 134	2 134
<b>Vibration frequency</b>	Hz	23,3-33,8	23,3-33,8	23,3-33,8	23,3-33,8	23,3-33,8
<b>Amplitude</b>	mm	1,97/1,28	2,21/1,68	1,97/1,28	1,76/1,14	1,99/1,51

# TRACKED FORESTRY CARRIERS

## Main features

- Volvo Custom Care Cab with heavy duty forestry guarding meeting global safety standards
- Heavy-duty protection for upper and lower structure
- Purpose-built, high-walker undercarriage (from FC2421C upwards) with full length track guard, idler reinforcement and heavy duty track motor covers
- Heavy duty forestry boom and arm with heavy duty hydraulic cylinder and work light guarding
- Optional LevelMax leveling module (available from FC2421C upwards) automatically levels the superstructure up to 21 degrees in all four directions when working on steep slopes or uneven ground, resulting in operator comfort, improved performance and less swing component wear



		<b>FC2121C</b>	<b>FC2421C</b>
<b>Engine</b>	Volvo	D6E	D6E
<b>Max. power at</b>	r/s (r/min)	30 (1 800)	30 (1 800)
SAE J1995 gross	kW (hp)	123 (167)	123 (167)
ISO 9249, SAE J1349 net	kW (hp)	110 (150)	110 (150)
<b>Max. engine torque</b>	Nm	735	735
<b>Max. reach</b>			
from swing centre	mm	8 460	8 460
with boom/arm	m	5,7/2,9	5,7/2,9
<b>Max. tractive effort</b>	kN	183	209
<b>Max. speed</b>	km	5,5	4,7
<b>Weight</b>			
with std boom/arm, w/o attachment	t	24,5	27,9

# PIPELAYERS

## Main features

- Longer boom provides more hook height and better reach, allowing the machine to work farther from the trench
- Lift and positioning performance through 360 degrees of swing for maximum flexibility and infinite load positioning – a solution unattainable with traditional side boom pipelayers
- Elevated Volvo Care Cab with operator protective structure lifts the operator providing a wider field of vision to the entire job site for more productivity and safety
- Fixed, raised cab on PL4611; hydraulically elevating cab on PL4608
- Innovative Load Management System featuring a boom-mounted light bar, in-cab monitor and warning systems to optimize operator confidence, effectiveness and safety
- Extra-wide undercarriage and wide track shoes increase machine stability and floatation. Track frames are removable for easy transport on the PL4611; hydraulically variable undercarriage on the PL4608



		<b>PL4608</b>	<b>PL4611</b>
<b>Engine</b>	Volvo	D12D	D12D
<b>Rated output at</b>	r/s (r/min)	30 (1 800)	30 (1 800)
Gross (SAE J1995)	kW (hp)	245 (333)	245 (333)
ISO 9249, SAE J1349 net	kW (hp)	235 (320)	235 (320)
<b>Max. engine torque</b>	Nm	1 720	1 720
<b>Max. tipping capacity</b>	t	80	113
<b>Related capacity</b>	t	49	70
<b>Std. boom length</b>	m	9,2	9
<b>Max. working slope</b>	°	30° (60%)	35° (70%)
<b>Operating weight</b>	t (lb)	57,5	68

# VOLVO FINANCIAL SERVICES



Volvo Financial Services offers a wide range of financial solutions. As part of the Volvo Group, we know all about the machines you rely on every day and we understand the demands of the construction industry.

Additionally, we appreciate that no two business operations are the same, so we take the time to get to know your unique situation.

You need a partner that you can trust and that can deliver finance solutions that optimize your productivity while maximizing your return on investment. We deliver a full range of products and services directly through your Volvo dealer.

### **Versatile loans and leases**

Working closely with our customers and dealers we use our expertise to ensure a smooth purchase process and provide customized funding solutions that best suit your needs.

### **Insurance Services**

Our insurance plans are designed around you and are the safest way to ensure continuity for your operations.

### **Always by your side**

When you need us, we're there ...

Even in the toughest of times ...

Volvo Financial Services.



# VOLVO USED EQUIPMENT



## Are you in the market for used equipment?

The Volvo Used Equipment Network exists to help you to find the right used machine, of the right quality, for your requirements – and always with the high level of service you would expect from

an authorised Volvo dealer.

Volvo is the partner you can trust to help you to select the best used equipment for your needs. We also offer a bespoke refurbishment service.

From the machines that we have, we select those Volvo machines that qualify to undergo an inspection and refurbishment process that will result in them becoming **Volvo Approved Used Equipment**.

## These carefully selected machines

are meticulously inspected by Volvo Service Technicians and then subjected to rigorous testing. Every machine that passes becomes **Volvo Approved Used Equipment** certified.



How stringent are these tests? Well, we asked ourselves what we would look for in a quality used machine – and we began there. That's why buying Volvo Approved Used Equipment is probably as close to buying a brand new Volvo machine as you can get.

To find out more about Volvo Approved Used Equipment, please visit your local Volvo dealer or go on-line at [www.volvoce.com/used](http://www.volvoce.com/used)

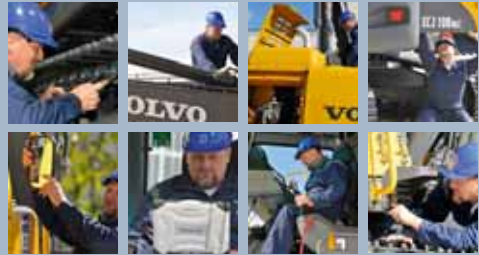


**Volvo Road Machinery** is also part of the Volvo Approved Used Equipment programme.

Unlike other machines, the process of inspection and refurbishment for Road Machinery is handled in the same factory the machine was actually built in.

Machines in this category are mostly pavers, although compaction equipment is increasingly becoming available.

To check the latest availability of Road Machinery and other Volvo Approved Used Equipment, please visit our website at [www.volvoce.com/used](http://www.volvoce.com/used)



**A SERIES OF RIGUROUS TESTS  
AND INSPECTIONS TO BECOME  
VOLVO APPROVED USED EQUIPMENT**



# CUSTOMER SUPPORT



An investment in a Volvo machine is an investment in the health of your business, so we make sure it comes with a commitment to provide you world class service and parts for the entire life of that investment.

Volvo machines are engineered to operate in some of the harshest conditions on earth. Our mission is to deliver on the “More care. Built in.” promise by helping you keep your machines at work and getting them back to work faster when they need service.

We help protect your business – and your profits – from the ground up.

We understand total cost of ownership and how it relates to your ability to control your business. That’s why we offer a full range of products and services, backed by

the expertise only we can offer, for the total care of your Volvo machine.

We are at your service. With a global reach and a commitment to deliver the solutions you need, we may be one of the most important business decisions you make.

## **Genuine Volvo Parts**

Volvo machines can perform as they do because of the seamless interaction of thousands of mechanical and electronic parts. Each one is specifically designed or selected by Volvo engineers to work in unison and provide perfect fit and function. There is no better way to protect the functional integrity of a Volvo machine than to fit it with only Genuine Volvo Parts.



### **Volvo Tooth System**

This Volvo engineered tooth system is a powerful ally in the quest for increased production. Teeth that penetrate better, last longer, and change out faster. Trust Volvo to develop a tooth solution so innovative, even some owners of our competitors' machines use them.

### **Volvo Lubricants and Coolants**

Volvo engines, drivetrains and hydraulic systems are engineered to exacting tolerances, which is one reason why owners can depend on them to operate in the harshest of conditions. Volvo lubricants and coolants are developed or selected as a part of the component engineering process – to ensure optimum suitability and long, productive component life. Advanced formulations to protect industry leading performance. It's another example of how Volvo puts technology to work for our customers.

### **Factory Remanufactured Components**

How do you know a remanufactured component is as good as new? When it's Factory Remanufactured by Volvo. "Like new" performance, fully tested and backed, and the latest technological updates wherever applicable – all at a price lower than buying new.

### **Volvo Trained Technicians**

Your authorized Volvo dealer's service team is where Volvo technology and Volvo trained expertise come together to provide industry leading diagnostic tools and techniques. Here you find the most up to date knowledge and tools to keep your Volvo machine performing like a champion.

# CUSTOMER SUPPORT

## CUSTOMER SUPPORT AGREEMENTS

A Customer Support Agreement is an invaluable way to plan, manage and control machine operating costs. As the needs of businesses vary, so do our Customer

Support Agreements. From simple inspection and reporting, to totally fixed and planned service cost – we have the plan structured to fit your business needs.

VOLVO CONSTRUCTION EQUIPMENT



### THE GOLD AGREEMENT

- A worry free, full service, maintenance and repair contract. Fixed costs guaranteed for the life of the agreement (excluding site damage).
- Complete, certified service history, providing highest resale potential for your machine.

VOLVO CONSTRUCTION EQUIPMENT



### THE SILVER AGREEMENT

- Our most flexible agreement.
- Add or delete features during the term of agreement.
- Tailor it to changes in machine use.
- Lets you set the extent to which you are covered for major repairs.

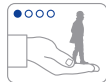
VOLVO CONSTRUCTION EQUIPMENT



### THE BLUE AGREEMENT

- Your best way to achieve fixed costs for regular service and maintenance work.
- Includes MATRIS machine operational analysis – our state of the art tool for assessing a machine's operational patterns.
- Regular machine software updates to give your machine our latest improvements.

VOLVO CONSTRUCTION EQUIPMENT



### THE WHITE AGREEMENT

- Regular machine inspections by Volvo trained technicians.
- Detailed inspection reports to support effective service planning and enhance machine resale value.
- Regular machine analysis to support maximum machine performance.

# CUSTOMER SUPPORT

## CARETRACK

### Monitor your machines – from wherever you are

CareTrack® is a remote monitoring system developed to work with the onboard electronic control system built into your Volvo machine. Once installed, valuable operating data such as machine location, fuel consumption and service needs are at your fingertips via GPRS/GSM mobile network or satellite. All you need is an internet connected computer and your secure log-on password.

Now you have the power to drive your business forward by making the most of your Volvo machine. Maximize production, minimize costs and improve fleet effectiveness. You can optimize your machine investment – shift by shift, job by job.





Volvo Construction Equipment is different. Our machines are designed, built and supported in a different way. That difference comes from an engineering heritage of over 175 years. A heritage of thinking first about the people who actually use the machines. About how to help them be safer, more comfortable, more productive. About the environment we all share. The result of that thinking is a growing range of machines and a global support network dedicated to helping you do more. People around the world are proud to use Volvo. And we're proud of what makes Volvo different – **More care. Built in.**



*Not all products are available in all markets. Under our policy of continuous improvement, we reserve the right to change specifications and design without prior notice. The illustrations do not necessarily show the standard version of the machine.*

Ref. No. VOE2186692688  
Printed in Sweden 2009-03-10,0  
Volvo, Brussels

English  
GMC

**VOLVO**

Volvo Construction Equipment  
[www.volvoce.com](http://www.volvoce.com)