



Volvo Construction Equipment

EC380E_{HR}, EC480E_{HR}

VOLVO EXCAVATORS



Volvo EC380E_{HR}, E480E_{HR} in detail.

Engine

The latest generation, Volvo engine Tier 4f (Stage IV) emissions compliant diesel engine fully meets the demands of the latest, emissions regulations. Featuring Volvo Advanced Combustion Technology (V-ACT), it is designed to deliver superior performance and fuel efficiency. The engine uses precise, high-pressure fuel injectors, turbo charger and air-to-air intercooler, and electronic engine controls to optimize machine performance.

Air Filter: 3-stage with precleaner.

Automatic Idling System: Reduces engine speed to idle when the levers and pedals are not activated resulting in less fuel consumption and low cab noise levels.

EC380E_{HR}

Engine Tier 4f (Stage IV)	Volvo	D13J
Max power at	r/s / r/min	28 / 1 700
Net, ISO 9249/SAE J1349	kW / hp	225 / 306
Gross, ISO 14396/SAE J1995	kW / hp	226 / 307
Max torque at	Nm / r/min	1 692 / 1 275
No. of cylinders		6
Displacement	l	12.8
Bore	mm	131
Stroke	mm	158

EC480E_{HR}

Engine Tier 4f (Stage IV)	Volvo	D13J
Max power at	r/s / r/min	30 / 1 800
Net, ISO 9249/SAE J1349	kW / hp	277 / 376
Gross, ISO 14396/SAE J1995	kW / hp	278 / 378
Max torque at	Nm / r/min	1 890 / 1 350
No. of cylinders		6
Displacement	l	12.8
Bore	mm	131
Stroke	mm	158

Electrical system

High-capacity electrical system that is well protected. Waterproof double-lock harness plugs are used to secure corrosion-free connections. The main relays and solenoid valves are shielded to prevent damage. The master switch is standard. Contronics provides advanced monitoring of machine functions and important diagnostic information.

		EC380E _{HR}	EC480E _{HR}
Voltage	V	24	24
Batteries	V	2 x 12	2 x 12
Battery capacity	Ah	200	200
Alternator	V / Ah	28 / 80	28 / 80

Swing system

The swing system uses an axial piston motors, driving a planetary gearbox for maximum torque. An automatic holding brake and anti-rebound valve are standard.

		EC380E _{HR}	EC480E _{HR}
Max. slew speed	r/min	10.2	9.3
Max. slew torque	kNm	130.5	166.3

Drive

Each track is powered by an automatic two-speed shift travel motor. The track brakes are multi-disc, spring-applied and hydraulic released. The travel motor, brake and planetary gears are well protected within the track frame.

		EC380E _{HR}	EC480E _{HR}
Max. drawbar pull	kN	276.5	333
Max. travel speed (1st Gear/2nd Gear)	km/h	3.4/5.3	3.2/5.2
Gradeability	°	35	35

Undercarriage

The undercarriage has a robust X-shaped frame. Greased and sealed track chains are standard.

		EC380E _{HR}	EC480E _{HR}
Track pads		2 x 50	2 x 52
Link pitch	mm	215.9	215.9
Shoe width, triple grouser	mm	600 / 700 / 800 / 900	600 / 700 / 800 / 900
Shoe width, double grouser	mm	600	600
Bottom rollers		2 x 9	2 x 9
Top rollers		2 x 2	2 x 2(2 x 3*)

* Retractable undercarriage

Hydraulic system

The new electro-hydraulic system and new MCV (main control valve) use intelligent technology to control on-demand flow for high-productivity, high-digging capacity and excellent fuel consumption.

The following important functions are included in the system:

Summation system: Combines the flow of both hydraulic pumps to a single function to ensure quick cycle times and high productivity.

Boom priority: Gives priority to the boom operation for faster raising when loading or performing deep excavations.

Arm priority: Gives priority to the arm operation for faster cycle times in leveling and for increased bucket filling when digging.

Swing priority: Gives priority to swing functions for faster simultaneous operations.

Regeneration system: Prevents cavitation and provides flow to other movements during simultaneous operations for maximum productivity.

Power boost: All digging and lifting forces are increased.

Holding valves: Boom and arm holding valves prevent the digging equipment from creeping.

	EC380EHR	EC480EHR
Main pump, Type 2 x variable displacement axial piston pumps		
Maximum flow l/min	2 x 300	2 x 376
Pilot pump, Type Gear pump		
Maximum flow l/min	32.6	32

Hydraulic motors

Travel: Variable displacement axial piston motor with mechanical brake
Slew: Fixed displacement axial piston motor with mechanical brake

	EC380EHR	EC480EHR
Relief valve setting		
Implement MPa	32.4/35.3	32.4/35.3
Travel circuit MPa	35.3	32.4
Slew circuit MPa	27.9	25.8
Pilot circuit MPa	3.9	3.9

Hydraulic cylinders

	EC380EHR	EC480EHR
Base boom	2	2
Bore x Stroke ø x mm	165 x 1 530	180 x 1 590
Arm	1	1
Bore x Stroke ø x mm	175 x 1 700	190 x 1 850
Bucket	1	1
Bore x Stroke ø x mm	145 x 1 285	165 x 1 335
Intermediate arm	1	1
Bore x Stroke ø x mm	160 x 1 530	175 x 1 700
Demolition arm	1	1
Bore x Stroke ø x mm	150 x 1 745	175 x 1 700
Crusher arm	1	1
Bore x Stroke ø x mm	130 x 1 150	130 x 1 150

Service refill capacities

	EC380EHR	EC480EHR
Fuel tank l	620	680
AdBlue/DEF tank l	62.5	62.5
Hydraulic system, total l	500	525
Hydraulic tank l	225	270
Engine oil l	42	42
Engine coolant l	60	60
Slew reduction unit l	6.5	2 x 6
Travel reduction unit l	2 x 6.8	2 x 7.5

Hydraulic cylinder for Demolition EC380EHR

	Qty	Bore ø mm	Stroke mm
for Demolition			
Base boom cylinder	2	165	1 530
Intermediate arm cylinder	1	160	1 530
Demolition arm cylinder	1	150	1 745
Crusher arm cylinder	1	130	1 150

for Digging

Base boom cylinder	2	165	1 530
Arm cylinder	1	175	1 700
Bucket cylinder	1	145	1 285

for HR

Modular cylinder	2	100	545
Tilting cab cylinder	2	65	130
Hyd. Retractable U/C cylinder	2	140	1 000

Hydraulic cylinder for Demolition EC480EHR

	Qty	Bore ø mm	Stroke mm
for Demolition			
Base boom cylinder	2	180	1 590
Intermediate arm cylinder	1	175	1 700
Demolition arm cylinder	1	175	1 700
Crusher arm cylinder	1	130	1 150

for Digging

Base boom cylinder	2	180	1 590
Arm cylinder	1	190	1 850
Bucket cylinder	1	165	1 335

for HR

Modular cylinder	2	100	590
Tilting cab cylinder	2	65	130
Hyd. Retractable U/C cylinder	2	140	1 000

Tilting Cab

The standard hydraulically tilting cabin tilts up to 30 degrees to enhance visibility and reduce operator fatigue and neck strain on high-reach jobs.

The operator's cab has easy access via a wide door opening. The cab is supported on hydraulic dampening mounts to reduce shock and vibration levels. These along with sound absorbing lining provide low noise levels. The cab has excellent all-round visibility, especially upward, with a wide front glass and top wiper. Integrated air-conditioning and heating system: The pressurized and filtered cab air is supplied by an automatically-controlled fan. The air is distributed throughout the cab from 14 vents. Ergonomic operator's seat: The adjustable seat and joystick console move independently to accommodate the operator. The seat has 12 different adjustments plus a seat belt for the operator's comfort and safety.

Sound Level

	EC380EHR	EC480EHR
Sound level in cab according to ISO 6396		
LpA dB(A)	71	71
External sound level according to ISO 6395 and EU Noise Directive (2000/14/EC) and 474-1:2006 +A1:2009		
LwA dB(A)	105	106

Digging Equipment

	EC380EHR	EC480EHR
Arm with strip m	3.20	3.35
Arm without strip m	3.20	3.35
Arm with strip m	3.90	3.90
Arm without strip m	3.90	3.90

Specifications.

MACHINE WEIGHTS

EC380EHR

At Demolition Equipment			
(Condition shoe for EU region)	mm	600	600
		Fixed undercarriage	Hydraulically retracted undercarriage
Base machine	kg	36 540	40 740
3-piece demolition equipment (incl cradle)	kg	7 510	7 510
Boom extension	kg	NO	NO
Additional CWT	kg	2 750	2 750
Total weight	kg	46 800	51 000
At Digging Equipment			
Base machine	kg	36 540	40 740
Digging equipment with 3.35m arm (incl cradle)	kg	5 180	5 180
Total weight	kg	41 720	45 920

EC480EHR (Manually removable counterweight)

At Demolition Equipment				
(Condition shoe for EU region)	mm	600	600	600
		Fixed undercarriage	Mech. retracted undercarriage	Hydr. retracted undercarriage
Base machine	kg	44 720	45 685	50 465
3-piece demolition equipment (incl cradle)	kg	9 755	9 755	9 755
Boom extension	kg	NO	NO	NO
Additional CWT	kg	3 350	3 350	3 350
Total weight	kg	57 825	58 790	63 570
At Digging Equipment				
Base machine	kg	44 720	45 685	50 465
Digging equipment with 3.35m arm (incl cradle)	kg	6 350	6 350	6 350
Total weight	kg	51 070	52 035	56 815

EC480EHR (Hydraulically removable counterweight)

At Demolition Equipment				
(Condition shoe for EU region)	mm	600	600	600
		Fixed undercarriage	Mech. retracted undercarriage	Hydr. retracted undercarriage
Base machine	kg	44 520	45 485	50 265
3-piece demolition equipment (incl cradle)	kg	9 755	9 755	9 755
Boom extension	kg	NO	NO	NO
Additional CWT	kg	3 500	3 500	3 500
Total weight	kg	57 775	58 740	63 520
At Digging Equipment				
Base machine	kg	44 520	45 485	50 265
Digging equipment with 3.35m arm (incl cradle)	kg	6 350	6 350	6 350
Total weight	kg	50 870	51 835	56 615

GROUND PRESSURE

Description	Shoe width mm	Operating weight kg	Ground pressure kPa	Overall width mm
-------------	------------------	------------------------	------------------------	---------------------

EC380EHR

Demolition mode; fixed undercarriage, with 12.57 m base boom + demo. boom, 2.5 m inter. arm, 6.7 m demolition arm, 2 500 kg crusher, 10 000 kg counterweight				
Triple grouser	600	48 615	86.7	3 980
	700	49 055	75.0	4 080
	800	49 505	66.2	4 180
	900	49 955	59.4	4 280
Triple grouser (HD)	600	49 065	87.5	3 980
Double grouser	600	48 895	87.2	3 980

EC380EHR

Demolition mode; hydraulically retractable undercarriage, with 12.57 m base boom + demo. boom, 2.5 m inter. arm, 6.7 m demolition arm, 3 000 kg crusher, 10 000 kg counterweight				
Triple grouser	600	53 310	95.1	3 980
	700	53 750	82.2	4 080
	800	54 200	71.7	4 180
	900	54 650	65.0	4 280
Triple grouser (HD)	600	53 760	95.9	3 980
Double grouser	600	53 590	95.6	3 980

EC480EHR

Demolition mode; fixed undercarriage, with 15.60 m base boom + demo. boom, 2.5 m inter. arm, 8.5 m demolition arm, 3 000 kg crusher, 13 000 kg counterweight				
Triple grouser	600	60 340	104.3	3 340
	700	60 840	90.2	3 440
	800	61 345	79.5	3 540
	900	61 845	71.3	3 640
Double grouser	600	60 390	104.4	3 340

EC480EHR

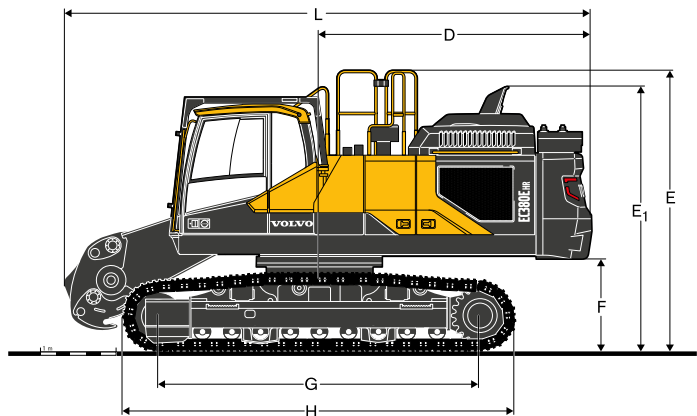
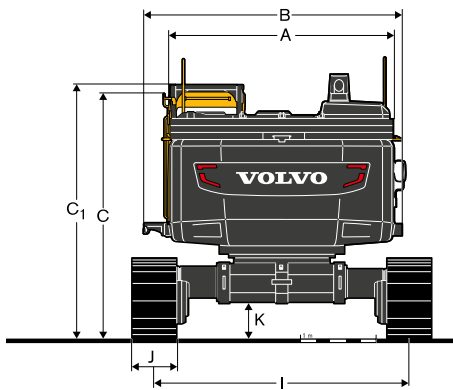
Demolition mode; mech. retractable undercarriage, with 15.60 m base boom + demo. boom, 2.5 m inter. arm, 8.5 m demolition arm, 3 000 kg crusher, 13 000 kg counterweight				
Triple grouser	600	61 305	105.5	3 490
	700	61 805	91.2	3 590
	800	62 310	80.4	3 690
	900	62 810	72.1	3 790
Double grouser	600	61 355	105.6	3 490

EC480EHR

Demolition mode; hydraulically retractable undercarriage, with 15.60 m base boom + demo. boom, 2.5 m inter. arm, 8.5 m demolition arm, 3 500 kg crusher, 13 000 kg counterweight				
Triple grouser	600	66 585	114.4	3 980
	700	67 085	98.8	4 080
	800	67 590	87.1	4 180
	900	68 090	78	4 280
Double grouser	600	66 635	114.5	3 980

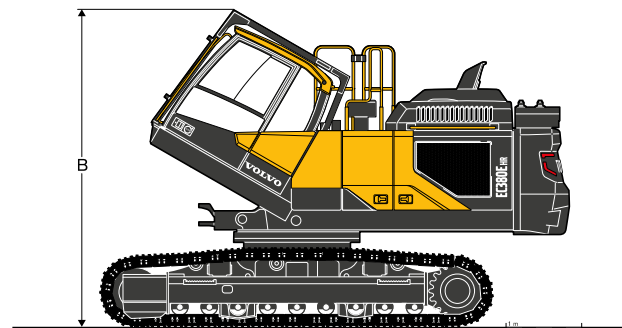
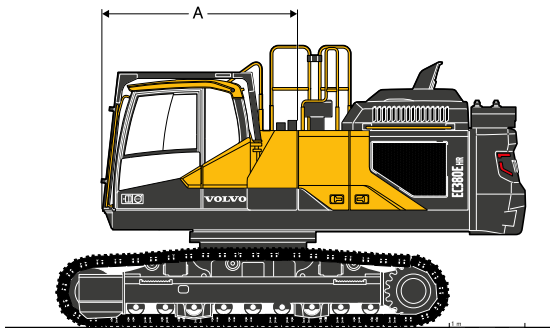
Specifications.

DIMENSIONS



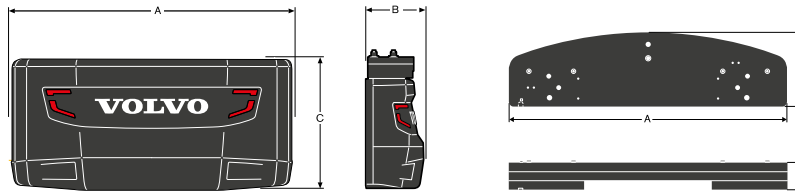
Description	Unit	EC380EHR		EC480EHR		
		Undercarriage fixed (Standard)	Undercarriage hydraulically retractable	Undercarriage fixed (Standard)	Undercarriage mechanically retractable	Undercarriage hydraulically retractable
A Width superstructure	mm	2 990	2 990	2 990	2 990	2 990
B Overall width with walk way (Only left side)	mm	3 320	3 320	3 320	3 320	3 320
Overall width with SIPS(both side) & Cab entrance step(Left side)	mm	3 415	3 415	3 415	3 415	3 415
Overall width without SIPS(both side) & Cab entrance step(Left side)	mm	2 990	2 990	2 990	2 990	2 990
C Overall height	mm	3 235	3 265	3 280	3 390	3 390
C ₁ Overall height (incl. FOG)	mm	3 330	3 360	3 390	3 500	3 500
D Tail swing radius	mm	3 600	3 600	3 880	3 880	3 880
E Overall height of Handrail	mm	3 690	3 720	3 735	3 845	3 845
E ₁ Overall height of Diffuser	mm	3 470	3 500	3 515	3 625	3 625
F Minimum Counterweight clearance *	mm	1 220	1 220	1 250	1 360	1 360
G Tumbler length	mm	4 240	4 240	4 370	4 370	4 370
H Track length	mm	5 180	5 210	5 370	5 370	5 370
I Track gauge (extended)	mm	2 740	3 380	2 740	2 890	3 380
Track gauge (retracted)	mm	-	2 390	-	2 390	2 390
J Shoe width	mm	600	600	600	600	600
K Min. ground clearance *	mm	500	480	515	710	485
L Overall length	mm	7 065	7 065	7 535	7 535	7 535
Total weight without additional counterweight	kg	36 540	40 730	44 720	45 685	50 465

* With shoe grouser



Dimensions of basic demolition machines	Unit	EC380EHR		EC480EHR		
		Undercarriage fixed (Standard)	Undercarriage hydraulically retractable	Undercarriage fixed (Standard)	Undercarriage mechanically retractable	Undercarriage hydraulically retractable
A Tilting cab length	mm	2 585	2 585	2 585	2 585	2 585
B Cabin height when fully tilted	mm	4 155	4 185	4 240	4 350	4 350
Cab tilting angle	°	30	30	30	30	30

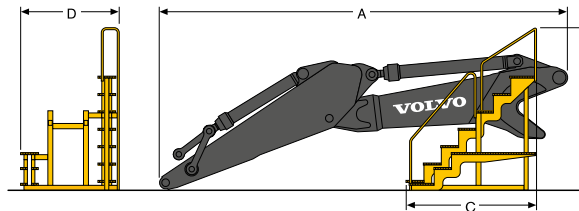
DIMENSIONS



Dimensions of the counterweight

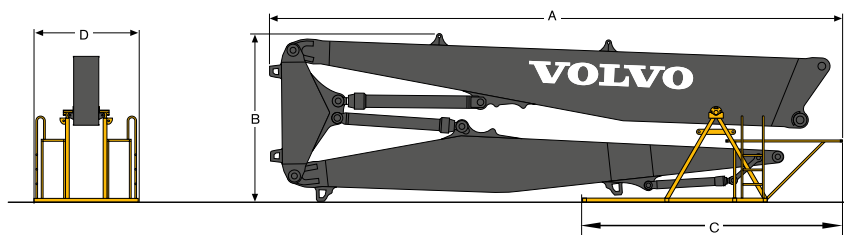
Description	Unit	EC380EHR		EC480EHR		
		standard	additional cwt	standard	additional cwt w/ fixed cwt	additional cwt w/ hydr remove cwt
A Width counterweight	mm	2 974	2 950	2 990	2 950	2 950
B Thickness counterweight	mm	734	590	920	590	590
C Height counterweight	mm	1 395	270	1 140	360	360
Total weight counterweight	kg	7 250	2 750	9 750	3 350	3 500

CAUTION: The machine can transported with the digging boom fitted. If it's transported without digging boom but with additional counterweight, take care of stability (tilting back) during the loading / unloading on truck.



Dimensions of backhoe equipment

Description	Unit	EC380EHR		EC480EHR	
		3.2 m	3.9 m	3.35 m	3.9 m
A Length - mounting to arm end	mm	6 865	7 600	8 775	8 785
B Overall height	mm	2 320	2 340	2 500	2 480
C Length of support cradle	mm	1 185	1 185	2 565	2 565
D Width of support cradle	mm	1 630	1 630	2 080	2 080
Weight of digging boom with transport cradle	kg	5 180	5 320	6 350	6 440

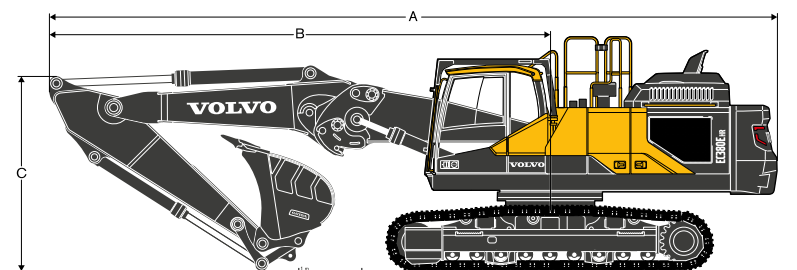


Dimensions of 3-piece demolition boom in support cradle

Description	Unit	EC380EHR	EC480EHR
A Overall length	mm	10 075	13 380
B Overall height	mm	3 012	3 050
C Length of support cradle	mm	2 565	2 585
D Width of support cradle	mm	2 080	2 040
Weight of working equipment without attachment, including support cradle	kg	7 510	9 755

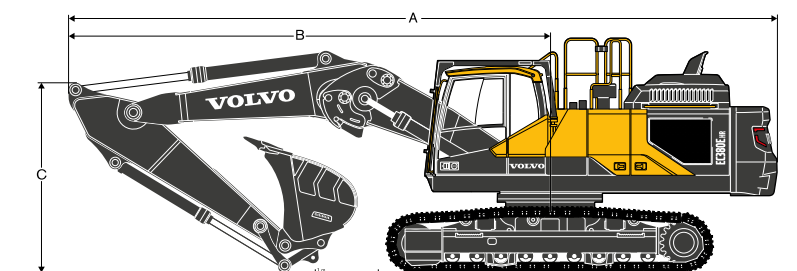
Specifications.

DIMENSIONS



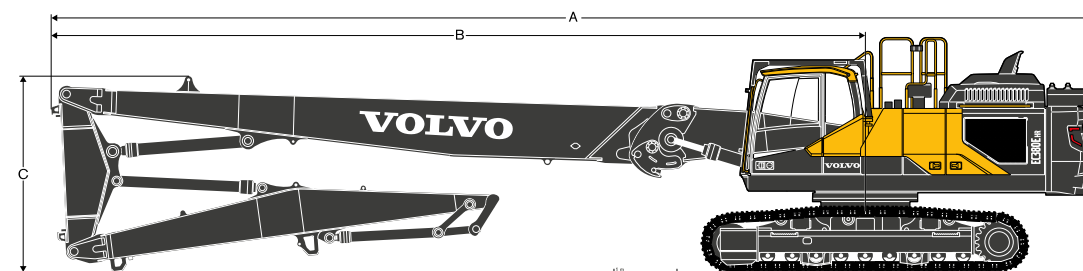
Dimensions of demolition machine including backhoe equipment (position for transport)

Boom	Unit	EC380EHR		EC480EHR	
		Straight boom 6.8 m		Straight boom 7.5 m	
Arm		3.2 m	3.9 m	3.35 m	3.9 m
A Overall length	mm	11 555	11 420	12 735	12 720
B Swing centre to front of equipment	mm	7 955	7 820	8 855	8 835
C Maximum height of boom in transport position	mm	3 085	3 960	3 510	3 670
Operating weight, excluding bucket	kg	45 525	45 665	56 330	56 420



Dimensions of demolition machine including backhoe equipment (position for transport)

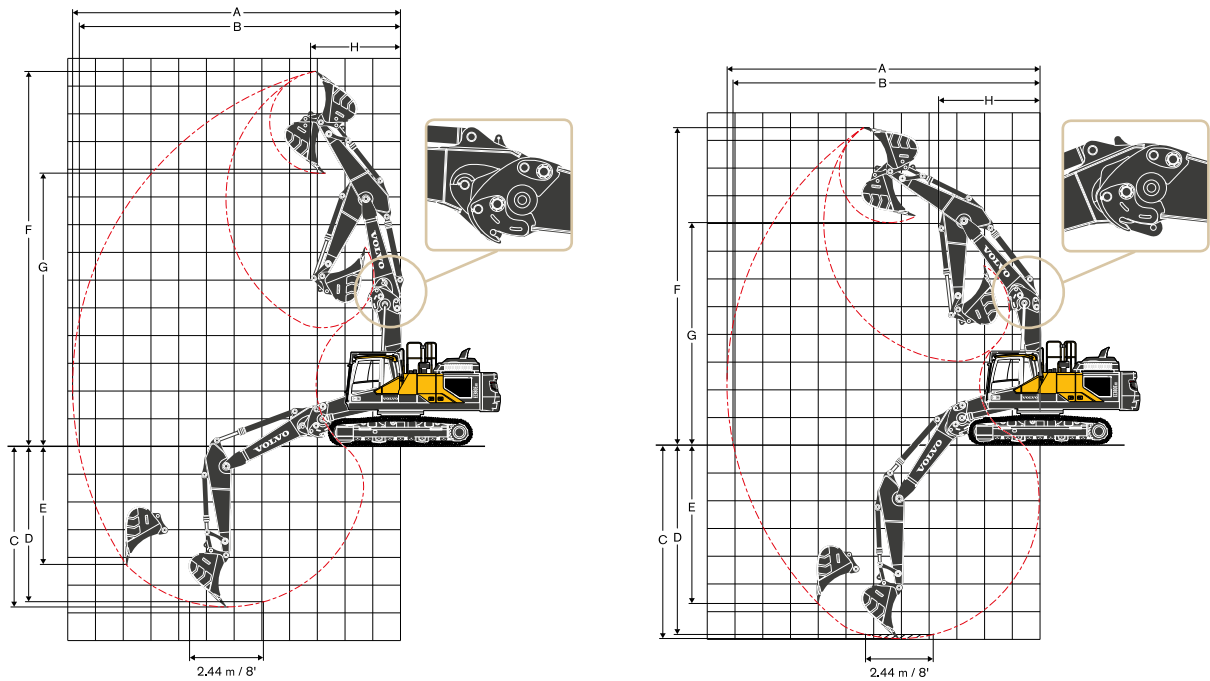
Boom	Unit	EC380EHR		EC480EHR	
		Bent boom 6.5 m		Bent boom 7.0 m	
Arm		3.2 m	3.9 m	3.35 m	3.9 m
A Overall length	mm	11 250	11 255	12 160	12 135
B Swing centre to front of equipment	mm	7 650	7 655	8 280	8 255
C Maximum height of boom in transport position	mm	3 605	3 845	3 860	3 830
Operating weight, excluding bucket	kg	45 525	45 665	56 330	56 420



Dimensions of demolition machine including 3-piece demolition attachment

	Unit	EC380EHR	EC480EHR
A Overall length	mm	16 515	20 045
B Swing centre to front of equipment	mm	12 915	16 165
C Maximum height of boom in transport position	mm	3 110	3 095
Operating weight, excluding crusher	kg	50 310	63 085

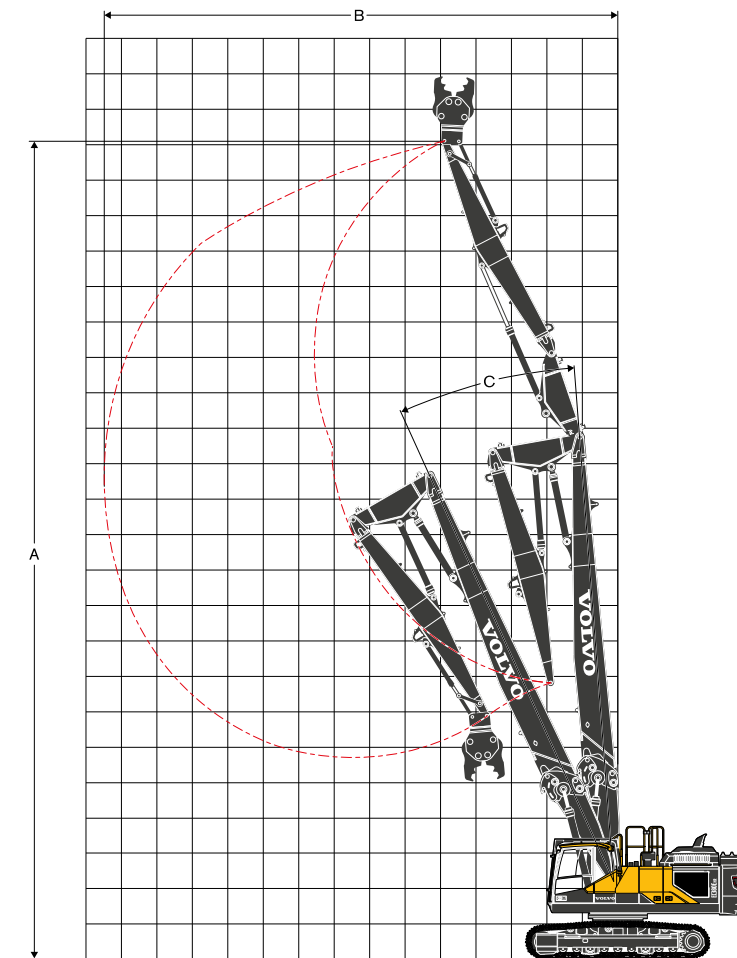
WORKING RANGES AND DIGGING FORCES



Unit		EC380EHR		EC480EHR	
Working ranges of demolition machines with straight boom					
Boom		Straight boom 6.8 m		Straight boom 7.5 m	
Arm		3.2 m	3.9 m	3.35 m	3.9 m
Bucket tip radius	mm	1 846	1 846	1 960	1 960
A Maximum digging reach	mm	11 825	12 500	12 815	13 330
B Maximum digging reach on ground	mm	11 625	12 310	12 590	13 115
C Maximum digging depth	mm	5 800	6 500	6 470	7 020
D Maximum digging depth (2.4 m level)	mm	5 650	6 370	6 325	6 890
E Maximum vertical wall digging depth	mm	4 300	4 815	5 060	5 520
F Maximum cutting height	mm	13 495	14 090	13 905	14 275
G Maximum dumping height	mm	9 810	10 410	10 030	10 410
H Minimum front swing radius	mm	3 250	3 580	3 970	3 940
Digging forces of demolition machines with straight boom					
Boom		Straight boom 6.8 m		Straight boom 7.5 m	
Arm		3.2 m	3.9 m	3.35 m	3.9 m
Bucket tip radius	mm	1 846	1 846	1 960	1 960
Breakout force-bucket (Normal/Power boost) ISO	kN	201/219	201/219	243/265	243/265
Tearout force-arm (Normal / Power boost) ISO	kN	162/177	142/155	198/216	177/193
Rotation angle, bucket	°	178	178	183	183
Working ranges of demolition machines with bent boom					
Boom		Bent boom 6.5 m		Bent boom 7.0 m	
Arm		3.2 m	3.9 m	3.35 m	3.9 m
Bucket tip radius	mm	1 846	1 846	1 960	1 960
A Maximum digging reach	mm	11 285	11 935	12 095	12 585
B Maximum digging reach on ground	mm	11 075	11 735	11 855	12 355
C Maximum digging depth	mm	7 010	7 710	7 730	8 280
D Maximum digging depth (2.4 m level)	mm	6 860	7 575	7 585	8 150
E Maximum vertical wall digging depth	mm	5 740	6 340	5 530	5 865
F Maximum cutting height	mm	11 420	11 790	10 990	11 135
G Maximum dumping height	mm	7 995	8 375	7 490	7 655
H Minimum front swing radius	mm	3 660	3 710	5 065	4 935
Digging forces of demolition machines with bent boom					
Boom		Bent boom 6.5 m		Bent boom 7.0 m	
Arm		3.2 m	3.9 m	3.35 m	3.9 m
Bucket tip radius	mm	1 846	1 846	1 960	1 960
Breakout force-bucket (Normal/Power boost) ISO	kN	201/219	201/219	243/265	243/265
Tearout force-arm (Normal / Power boost) ISO	kN	162/177	142/155	198/216	177/193
Rotation angle, bucket	°	178	178	183	183

Specifications.

WORKING RANGES AND DIGGING FORCES



EC380EHR demolition machine with 3-piece demolition boom

Description	Unit	EC380EHR Undercarriage, fixed (Standard)
A Maximum pin height	mm	23 025
B Maximum pin reach	mm	14 490
Maximum tool weight	t	2.5
C Operating angle	°	20

Description	Unit	EC380EHR Undercarriage hydraulically retractable
A Maximum pin height	mm	23 060
B Maximum pin reach	mm	14 490
Maximum tool weight	t	3
C Operating angle	°	20

EC480EHR demolition machine with 3-piece demolition boom

Description	Unit	EC480EHR Undercarriage, fixed
A Maximum pin height	mm	28 030
B Maximum pin reach	mm	16 090
Maximum tool weight	t	3
C Operating angle	°	15

Description	Unit	EC480EHR Undercarriage mechanically retractable
A Maximum pin height	mm	28 140
B Maximum pin reach	mm	16 090
Maximum tool weight	t	3
C Operating angle	°	15

Description	Unit	EC480EHR Undercarriage hydraulically retractable
A Maximum pin height	mm	28 140
B Maximum pin reach	mm	16 090
Maximum tool weight	t	3.5
C Operating angle	°	15

LIFTING CAPACITY EC380EHR with fixed type long crawler undercarriage

At the arm end without bucket.

For lifting capacity including bucket, simply subtract actual weight of the direct fit bucket or the bucket with quick fit from the following values.

	Lifting hook related to ground level	1.5 m		3.0 m		4.5 m		6.0 m		7.5 m		9.0 m		10.5 m		Max. reach		
		Along UC	Across UC	Along UC	Across UC	Along UC	Across UC	Along UC	Across UC	Along UC	Across UC	Along UC	Across UC	Along UC	Across UC	Along UC	Across UC	m
Bent boom	9.0 m kg							*10 270	*10 270							*7 960	*7 960	6.5
6.5 m	7.5 m kg							*11 340	*11 340	*9 170	*9 170					*7 300	*7 300	7.8
Arm	6.0 m kg							*12 180	*12 180	*11 100	*11 100					*7 060	*7 060	8.6
3.2 m	4.5 m kg					*17 320	*17 320	*13 710	*13 710	*11 790	11 230	*8 600	8 340			*7 100	*7 100	9.1
Shoe	3.0 m kg					*21 030	*21 030	*15 460	15 230	*12 670	10 840	10 180	8 180			*7 350	*7 350	9.4
900 mm	1.5 m kg					*23 330	22 740	*16 850	14 550	13 160	10 470	9 990	8 000			*7 850	7 480	9.4
CWT	0.0 m kg					*23 620	22 180	*17 430	14 110	12 890	10 210	9 860	7 880			*8 700	7 660	9.2
7 250 kg	-1.5 m kg			*14 870	*14 870	*22 460	22 080	*17 020	13 940	12 770	10 090					*10 130	8 270	8.7
	-3.0 m kg			*23 760	*23 760	*19 980	*19 980	*15 420	14 010	*11 730	10 180					*10 730	9 560	7.9
	-4.5 m kg					*15 630	*15 630	*11 800	*11 800							*9 950	*9 950	6.6
Bent boom	9.0 m kg															*6 170	*6 170	7.4
6.5 m	7.5 m kg									*9 030	*9 030					*5 730	*5 730	8.6
Arm	6.0 m kg									*10 190	*10 190	*7 430	*7 430			*5 570	*5 570	9.3
3.9 m	4.5 m kg					*15 310	*15 310	*12 560	*12 560	*10 990	*10 990	*9 560	8 480			*5 580	*5 580	9.8
Shoe	3.0 m kg					*19 220	*19 220	*14 460	*14 460	*12 000	10 970	10 260	8 250			*5 760	*5 760	10.1
900 mm	1.5 m kg					*22 270	*22 270	*16 150	14 720	*12 930	10 540	10 020	8 020			*6 110	*6 110	10.1
CWT	0.0 m kg			*9 000	*9 000	*23 500	22 250	*17 140	14 160	12 890	10 210	9 830	7 840			*6 690	*6 690	9.8
7 250 kg	-1.5 m kg	*9 270	*9 270	*13 970	*13 970	*23 110	21 930	*17 210	13 860	12 690	10 010	9 740	7 750			*7 640	7 330	9.4
	-3.0 m kg	*14 670	*14 670	*20 430	*20 430	*21 350	*21 350	*16 210	13 820	*12 610	9 990					*9 290	8 260	8.6
	-4.5 m kg			*23 940	*23 940	*17 970	*17 970	*13 720	*13 720	*9 850	*9 850					*9 800	*9 800	7.5
Straight boom	10.5 m kg					*13 120	*13 120									*10 090	*10 090	5.5
6.8 m	9.0 m kg					*11 700	*11 700	*12 030	*12 030							*8 290	*8 290	7.3
Arm	7.5 m kg					*10 870	*10 870	*11 990	*11 990	*11 680	11 400					*7 520	*7 520	8.5
3.2 m	6.0 m kg			*11 010	*11 010	*12 760	*12 760	*13 390	*13 390	*12 680	11 220	*9 530	8 270			*7 170	*7 170	9.2
Shoe	4.5 m kg					*21 200	*21 200	*16 060	15 450	*13 180	10 890	10 160	8 160			*7 050	*7 050	9.7
900 mm	3.0 m kg							*17 120	14 680	13 200	10 510	9 980	7 990			*7 150	6 820	10.0
CWT	1.5 m kg							*17 450	14 090	12 860	10 180	9 810	7 830			*7 420	6 750	10.0
7 250 kg	0.0 m kg					*13 620	*13 620	*16 720	13 780	12 640	9 980	9 710	7 730			*7 940	6 940	9.8
	-1.5 m kg					*18 120	*18 120	*14 870	13 730	*11 790	9 930	*8 660	7 760			*7 700	7 480	9.3
	-3.0 m kg					*13 840	*13 840	*11 790	*11 790	*9 090	*9 090					*6 190	*6 190	8.5
	-4.5 m kg															*10 530	*10 530	4.0
Straight boom	12.0 m kg																	
6.8 m	10.5 m kg							*9 680	*9 680							*7 470	*7 470	6.6
Arm	9.0 m kg							*9 630	*9 630	*9 020	*9 020					*6 410	*6 410	8.2
3.9 m	7.5 m kg							*9 280	*9 280	*9 680	*9 680	*7 540	*7 540			*5 890	*5 890	9.2
Shoe	6.0 m kg					*8 790	*8 790	*9 980	*9 980	*10 400	*10 400	*9 520	8 430			*5 640	*5 640	10.0
900 mm	4.5 m kg					*16 300	*16 300	*13 530	*13 530	*12 360	11 040	10 260	8 250			*5 550	*5 550	10.4
CWT	3.0 m kg							*16 530	14 920	*13 270	10 610	10 030	8 030	*7 160	6 300	*5 630	*5 630	10.6
7 250 kg	1.5 m kg							*17 280	14 210	12 900	10 220	9 800	7 820	*7 610	6 220	*5 820	*5 820	10.7
	0.0 m kg					*15 390	*15 390	*17 060	13 760	12 610	9 940	9 650	7 670			*6 180	*6 180	10.5
	-1.5 m kg			*9 020	*9 020	*19 640	*19 640	*15 760	13 590	*12 450	9 820	9 600	7 620			*6 780	6 640	10.0
	-3.0 m kg					*16 350	*16 350	*13 300	*13 300	*10 450	9 860	*7 330	*7 330			*6 230	*6 230	9.3
	-4.5 m kg							*9 360	*9 360									8.3
Bent boom	9.0 m kg							*10 270	*10 270							*7 960	*7 960	6.5
6.5 m	7.5 m kg							*11 340	*11 340	*9 170	*9 170					*7 300	*7 300	7.8
Arm	6.0 m kg							*12 180	*12 180	*11 100	*11 100					*7 060	*7 060	8.6
3.2 m	4.5 m kg					*17 320	*17 320	*13 710	*13 710	*11 790	11 120	*8 600	8 260			*7 100	*7 100	9.1
Shoe	3.0 m kg					*21 030	*21 030	*15 460	15 090	*12 670	10 730	10 070	8 090			*7 350	*7 350	9.4
800 mm	1.5 m kg					*23 330	22 520	*16 850	14 400	13 030	10 360	9 890	7 920			*7 850	7 400	9.4
CWT	0.0 m kg					*23 620	21 960	*17 430	13 970	12 750	10 100	9 760	7 790			*8 700	7 580	9.2
7 250 kg	-1.5 m kg			*14 870	*14 870	*22 460	21 860	*17 020	13 800	12 630	9 990					*10 130	8 180	8.7
	-3.0 m kg			*23 760	*23 760	*19 980	*19 980	*15 420	13 860	*11 730	10 070					*10 730	9 470	7.9
	-4.5 m kg					*15 630	*15 630	*11 800	*11 800							*9 950	*9 950	6.6
Bent boom	9.0 m kg															*6 170	*6 170	7.4
6.5 m	7.5 m kg									*9 030	*9 030					*5 730	*5 730	8.6
Arm	6.0 m kg									*10 190	*10 190	*7 430	*7 430			*5 570	*5 570	9.3
3.9 m	4.5 m kg					*15 310	*15 310	*12 560	*12 560	*10 990	*10 990	*9 560	8 390			*5 580	*5 580	9.8
Shoe	3.0 m kg					*19 220	*19 220	*14 460	*14 460	*12 000	10 870	10 160	8 170			*5 760	*5 760	10.1
800 mm	1.5 m kg					*22 270	*22 270	*16 150	14 580	*12 930	10 440	9 920	7 940			*6 110	*6 110	10.1
CWT	0.0 m kg			*9 000	*9 000	*23 500	22 030	*17 140	14 010	12 760	10 100	9 720	7 760			*6 690	*6 690	9.8
7 250 kg	-1.5 m kg	*9 270	*9 270	*13 970	*13 970	*23 110	21 710	*17 210	13 720	12 560	9 910	9 630	7 670			*7 640	7 250	9.4
	-3.0 m kg	*14 670	*14 670	*20 430	*20 430	*21 350	*21 350	*16 210	13 680	12 530	9 890					*9 290	8 180	8.6
	-4.5 m kg			*23 940	*23 940	*17 970	*17 970	*13 720	*13 720	*9 850	*9 850					*9 800	*9 800	7.5
Straight boom	10.5 m kg					*13 120	*13 120									*10 090	*10 090	5.5
6.8 m	9.0 m kg					*11 700	*11 700	*12 030	*12 030							*8 290	*8 290	7.3
Arm	7.5 m kg					*10 870	*10 870	*11 990	*11 990	*11 680	11 290					*7 520	*7 520	8.5
3.2 m	6.0 m kg			*11 010	*11 010	*12 760	*12 760	*13 390	*13 390	*12 680	11 120	*9 530	8 190			*7 170	*7 170	9.2
Shoe	4.5 m kg					*21 200	*21 200	*16 060	15 310	*13 180	10 780	10 060	8 080			*7 050	*7 050	9.7
800 mm	3.0 m kg							*17 120	14 540	13 070	10 400	9 880	7 900			*7 150	6 740	10.0
CWT	1.5 m kg							*17 450	13 950	12 730	10 080	9 710	7 740			*7 420	6 670	10.0
7 250 kg	0.0 m kg					*13 620	*13 620	*16 720	13 640	12 510	9 870	9 610	7 650			*7 940	6 870	9.8
	-1.5 m kg					*18 120	*18 120	*14 870	13 590	*11 790	9 830	*8 660	7 680			*7 700	7 400	9.3
	-3.0 m kg					*13 840	*13 840	*11 790	*11 790	*9 090	*9 090					*6 190	*6 190	8.5
	-4.5 m kg															*10 530	*10 530	4.0
Straight boom	12.0 m kg																	
6.8 m	10.5 m kg							*9 680	*9 680							*7 470	*7 470	6.6
Arm	9.0 m kg							*9 630	*9 630	*9 020	*9 020					*6 410	*6 410	8.2
3.9 m	7.5 m kg							*9 280	*9 280	*9 680	*9 680	*7 540	*7 540			*5 890	*5 890	9.2
Shoe	6.0 m kg					*8 790	*8 79											

Specifications.

LIFTING CAPACITY EC380EHR with fixed type long crawler undercarriage

At the arm end without bucket.

For lifting capacity including bucket, simply subtract actual weight of the direct fit bucket or the bucket with quick fit from the following values.

	Lifting hook related to ground level	1.5 m		3.0 m		4.5 m		6.0 m		7.5 m		9.0 m		10.5 m		Max. reach		
		Along UC	Across UC	Along UC	Across UC	Along UC	Across UC	Along UC	Across UC	Along UC	Across UC	Along UC	Across UC	Along UC	Across UC	Along UC	Across UC	m
Bent boom	9.0 m	kg						*10 270	*10 270							*7 960	*7 960	6.5
6.5 m	7.5 m	kg						*11 340	*11 340	*9 170	*9 170					*7 300	*7 300	7.8
Arm	6.0 m	kg						*12 180	*12 180	*11 100	*11 100					*7 060	*7 060	8.6
3.2 m	4.5 m	kg				*17 320	*17 320	*13 710	*13 710	*11 790	11 020	*8 600	8 170			*7 100	*7 100	9.1
Shoe	3.0 m	kg				*21 030	*21 030	*15 460	14 940	*12 670	10 630	9 970	8 010			*7 350	*7 350	9.4
700 mm	1.5 m	kg				*23 330	22 300	*16 850	14 260	12 900	10 260	9 780	7 830			*7 850	7 320	9.4
CWT	0.0 m	kg				*23 620	21 740	*17 430	13 830	12 620	9 990	9 660	7 710			*8 700	7 500	9.2
7 250 kg	-1.5 m	kg		*14 870	*14 870	*22 460	21 640	*17 020	13 660	12 500	9 880					*10 130	8 090	8.7
	-3.0 m	kg		*23 760	*23 760	*19 980	*19 980	*15 420	13 720	*11 730	9 970					*10 730	9 370	7.9
	-4.5 m	kg				*15 630	*15 630	*11 800	*11 800							*9 950	*9 950	6.6
Bent boom	9.0 m	kg														*6 170	*6 170	7.4
6.5 m	7.5 m	kg								*9 030	*9 030					*5 730	*5 730	8.6
Arm	6.0 m	kg								*10 190	*10 190	*7 430	*7 430			*5 570	*5 570	9.3
3.9 m	4.5 m	kg				*15 310	*15 310	*12 560	*12 560	*10 990	*10 990	*9 560	8 310			*5 580	*5 580	9.8
Shoe	3.0 m	kg				*19 220	*19 220	*14 460	*14 460	*12 000	10 760	10 060	8 090			*5 760	*5 760	10.1
700 mm	1.5 m	kg				*22 270	*22 270	*16 150	14 430	*12 930	10 330	9 810	7 860			*6 110	*6 110	10.1
CWT	0.0 m	kg			*9 000	*9 000	*23 500	21 810	*17 140	13 870	12 630	9 990	9 620	7 670		*6 690	*6 690	9.8
7 250 kg	-1.5 m	kg	*9 270	*9 270	*13 970	*13 970	*23 110	21 490	*17 210	13 580	12 420	9 800	9 530	7 590		*7 640	7 170	9.4
	-3.0 m	kg	*14 670	*14 670	*20 430	*20 430	*21 350	*21 350	*16 210	13 530	12 400	9 780				*9 290	8 090	8.6
	-4.5 m	kg			*23 940	*23 940	*17 970	*17 970	*13 720	*13 720	*9 850	*9 850				*9 800	*9 800	7.5
Straight boom	10.5 m	kg						*13 120	*13 120							*10 090	*10 090	5.5
6.8 m	9.0 m	kg						*11 700	*11 700	*12 030	*12 030					*8 290	*8 290	7.3
Arm	7.5 m	kg						*10 870	*10 870	*11 990	*11 990	*11 680	11 190			*7 520	*7 520	8.5
3.2 m	6.0 m	kg			*11 010	*11 010	*12 760	*12 760	*13 390	*13 390	*12 680	11 010	*9 530	8 100		*7 170	*7 170	9.2
Shoe	4.5 m	kg					*21 200	*21 200	*16 060	15 160	*13 180	10 680	9 960	8 000		*7 050	7 010	9.7
700 mm	3.0 m	kg						*17 120	14 390	12 940	10 300	9 770	7 820		*7 150	6 670	10.0	
CWT	1.5 m	kg						*17 450	13 800	12 590	9 970	9 600	7 660		*7 420	6 600	10.0	
7 250 kg	0.0 m	kg						*13 620	*13 620	*16 720	13 500	12 380	9 770	8 500	7 570	*7 940	6 790	9.8
	-1.5 m	kg						*18 120	*18 120	*14 870	13 440	*11 790	9 720	*8 660	7 600	*7 700	7 320	9.3
	-3.0 m	kg						*13 840	*13 840	*11 790	*11 790	*9 090	*9 090			*6 190	*6 190	8.5
	-4.5 m	kg														*10 530	*10 530	4.0
Straight boom	12.0 m	kg																
6.8 m	10.5 m	kg								*9 680	*9 680					*7 470	*7 470	6.6
Arm	9.0 m	kg								*9 630	*9 630	*9 020	*9 020			*6 410	*6 410	8.2
3.9 m	7.5 m	kg								*9 280	*9 280	*9 680	*9 680	*7 540	*7 540	*5 890	*5 890	9.2
Shoe	6.0 m	kg						*8 790	*8 790	*9 980	*9 980	*10 400	*10 400	*9 520	8 260	*5 640	*5 640	10.0
700 mm	4.5 m	kg						*16 300	*16 300	*13 530	*13 530	*12 360	10 830	10 050	8 090	*5 550	*5 550	10.4
CWT	3.0 m	kg								*16 530	14 640	13 060	10 400	9 820	7 860	*7 160	6 160	10.6
7 250 kg	1.5 m	kg								*17 280	13 920	12 640	10 010	9 600	7 650	*7 610	6 080	10.7
	0.0 m	kg								*17 060	13 480	12 350	9 730	9 440	7 500	*5 820	6 090	10.5
	-1.5 m	kg			*9 020	*9 020	*19 640	*19 640	*15 760	13 310	12 220	9 610	9 390	7 450		*6 780	6 490	10.0
	-3.0 m	kg						*16 350	*16 350	*13 300	*13 300	*10 450	9 650	*7 330	*7 330	*6 230	*6 230	9.3
	-4.5 m	kg								*9 360	*9 360							8.3
Bent boom	9.0 m	kg								*10 270	*10 270					*7 960	*7 960	6.5
6.5 m	7.5 m	kg								*11 340	*11 340	*9 170	*9 170			*7 300	*7 300	7.8
Arm	6.0 m	kg								*12 180	*12 180	*11 100	*11 100			*7 060	*7 060	8.6
3.2 m	4.5 m	kg				*17 320	*17 320	*13 710	*13 710	*11 790	10 910	*8 600	8 090			*7 100	*7 100	9.1
Shoe	3.0 m	kg				*21 030	*21 030	*15 460	14 800	*12 670	10 520	9 870	7 930			*7 350	*7 350	9.4
600 mm	1.5 m	kg				*23 330	22 080	*16 850	14 120	12 770	10 150	9 680	7 750			*7 850	7 240	9.4
CWT	0.0 m	kg				*23 620	21 520	*17 430	13 690	12 490	9 890	9 550	7 630			*8 700	7 420	9.2
7 250 kg	-1.5 m	kg				*14 870	*14 870	*22 460	21 420	*17 020	13 510	12 370	9 780			*10 040	8 000	8.7
	-3.0 m	kg				*23 760	*23 760	*19 980	*19 980	*15 420	13 580	*11 730	9 860			*10 730	9 270	7.9
	-4.5 m	kg						*15 630	*15 630	*11 800	*11 800					*9 950	*9 950	6.6
Bent boom	9.0 m	kg														*6 170	*6 170	7.4
6.5 m	7.5 m	kg										*9 030	*9 030			*5 730	*5 730	8.6
Arm	6.0 m	kg								*10 190	*10 190	*7 430	*7 430			*5 570	*5 570	9.3
3.9 m	4.5 m	kg				*15 310	*15 310	*12 560	*12 560	*10 990	*10 990	*9 560	8 230			*5 580	*5 580	9.8
Shoe	3.0 m	kg				*19 220	*19 220	*14 460	*14 460	*12 000	10 660	9 950	8 000			*5 760	*5 760	10.1
600 mm	1.5 m	kg				*22 270	*22 270	*16 150	14 290	12 850	10 230	9 710	7 770			*6 110	*6 110	10.1
CWT	0.0 m	kg				*9 000	*9 000	*23 500	21 590	*17 140	13 730	12 500	9 890	9 520	7 590	*6 690	6 660	9.8
7 250 kg	-1.5 m	kg	*9 270	*9 270	*13 970	*13 970	*23 110	21 270	*17 210	13 440	12 290	9 700	9 430	7 500		*7 640	7 090	9.4
	-3.0 m	kg	*14 670	*14 670	*20 430	*20 430	*21 350	21 310	*16 210	13 390	12 270	9 680				*9 290	8 000	8.6
	-4.5 m	kg				*23 940	*23 940	*17 970	*17 970	*13 720	13 600	*9 850	*9 850			*9 800	*9 800	7.5
Straight boom	10.5 m	kg								*13 120	*13 120					*10 090	*10 090	5.5
6.8 m	9.0 m	kg								*11 700	*11 700	*12 030	*12 030			*8 290	*8 290	7.3
Arm	7.5 m	kg								*10 870	*10 870	*11 990	*11 990	*11 680	11 080	*7 520	*7 520	8.5
3.2 m	6.0 m	kg								*12 760	*12 760	*13 390	*13 390	*12 680	10 910	*9 530	8 020	9.2
Shoe	4.5 m	kg						*21 200	*21 200	*16 060	15 020	*13 180	10 570	9 850	7 910	*7 050	6 940	9.7
600 mm	3.0 m	kg								*17 120	14 250	12 810	10 190	9 670	7 740	*7 150	6 600	10.0
CWT	1.5 m	kg								*17 450	13 660	12 460	9 860	9 500	7 580	*7 420	6 530	10.0
7 2																		

LIFTING CAPACITY EC380EHR with hydraulically retractable undercarriage

At the arm end without bucket.

For lifting capacity including bucket, simply subtract actual weight of the direct fit bucket or the bucket with quick fit from the following values.

	Lifting hook related to ground level	1.5 m		3.0 m		4.5 m		6.0 m		7.5 m		9.0 m		10.5 m		Max. reach		
		Along UC	Across UC	Along UC	Across UC	Along UC	Across UC	Along UC	Across UC	Along UC	Across UC	Along UC	Across UC	Along UC	Across UC	Along UC	Across UC	m
Bent boom	9.0 m kg							*10 270	*10 270							*7 960	*7 960	6.5
6.5 m	7.5 m kg							*11 340	*11 340	*9 170	*9 170					*7 300	*7 300	7.8
Arm	6.0 m kg							*12 180	*12 180	*11 100	*11 100					*7 060	*7 060	8.6
3.2 m	4.5 m kg					*17 320	*17 320	*13 710	*13 710	*11 790	*11 790	*8 600	*8 600			*7 100	*7 100	9.1
Shoe	3.0 m kg					*21 030	*21 030	*15 460	*15 460	*12 670	*11 830	*11 010	8 960			*7 350	*7 350	9.4
900 mm	1.5 m kg					*23 330	*23 330	*16 850	15 890	*13 410	11 460	10 950	8 780			*7 850	*7 850	9.4
CWT	0.0 m kg					*23 620	*23 620	*17 430	15 460	*13 730	11 200	10 830	8 660			*8 700	8 430	9.2
7 250 kg	-1.5 m kg			*14 870	*14 870	*22 460	*22 460	*17 020	15 290	*13 350	11 080					*10 130	9 090	8.7
	-3.0 m kg			*23 760	*23 760	*19 980	*19 980	*15 420	15 350	*11 730	11 170					*10 730	10 500	7.9
	-4.5 m kg					*15 630	*15 630	*11 800	*11 800							*9 950	*9 950	6.6
Bent boom	9.0 m kg															*6 170	*6 170	7.4
6.5 m	7.5 m kg									*9 030	*9 030					*5 730	*5 730	8.6
Arm	6.0 m kg									*10 190	*10 190	*7 430	*7 430			*5 570	*5 570	9.3
3.9 m	4.5 m kg					*15 310	*15 310	*12 560	*12 560	*10 990	*10 990	*9 560	9 260			*5 580	*5 580	9.8
Shoe	3.0 m kg					*19 220	*19 220	*14 460	*14 460	*12 000	11 960	*10 510	9 040			*5 760	*5 760	10.1
900 mm	1.5 m kg					*22 270	*22 270	*16 150	16 070	*12 930	11 530	*10 960	8 810			*6 110	*6 110	10.1
CWT	0.0 m kg			*9 000	*9 000	*23 500	*23 500	*17 140	15 500	*13 510	11 200	10 790	8 620			*6 690	*6 690	9.8
7 250 kg	-1.5 m kg	*9 270	*9 270	*13 970	*13 970	*23 110	*23 110	*17 210	15 210	*13 510	11 000	10 700	8 540			*7 640	*7 640	9.4
	-3.0 m kg	*14 670	*14 670	*20 430	*20 430	*21 350	*21 350	*16 210	15 160	*12 610	10 980					*9 290	9 090	8.6
	-4.5 m kg			*23 940	*23 940	*17 970	*17 970	*13 720	*13 720	*9 850	*9 850					*9 800	*9 800	7.5
Straight boom	10.5 m kg					*13 120	*13 120									*10 090	*10 090	5.5
6.8 m	9.0 m kg					*11 700	*11 700	*12 030	*12 030							*8 290	*8 290	7.3
Arm	7.5 m kg					*10 870	*10 870	*11 990	*11 990	*11 680	*11 680					*7 520	*7 520	8.5
3.2 m	6.0 m kg			*11 010	*11 010	*12 760	*12 760	*13 390	*13 390	*12 680	12 210	*9 530	9 060			*7 170	*7 170	9.2
Shoe	4.5 m kg					*21 200	*21 200	*16 060	*16 060	*13 180	11 880	11 130	8 950			*7 050	*7 050	9.7
900 mm	3.0 m kg							*17 120	16 030	*13 630	11 500	10 940	8 770			*7 150	*7 150	10.0
CWT	1.5 m kg							*17 450	15 440	*13 730	11 170	10 770	8 610			*7 420	*7 420	10.0
7 250 kg	0.0 m kg					*13 620	*13 620	*16 720	15 130	*13 190	10 970	*10 400	8 520			*7 940	*7 660	9.8
	-1.5 m kg					*18 120	*18 120	*14 870	14 870	*11 790	10 920	*8 660	8 550			*7 700	*7 700	9.3
	-3.0 m kg					*13 840	*13 840	*11 790	*11 790	*9 090	*9 090					*6 190	*6 190	8.5
	-4.5 m kg															*10 530	*10 530	4.0
Straight boom	12.0 m kg																	
6.8 m	10.5 m kg							*9 680	*9 680							*7 470	*7 470	6.6
Arm	9.0 m kg							*9 630	*9 630	*9 020	*9 020					*6 410	*6 410	8.2
3.9 m	7.5 m kg							*9 280	*9 280	*9 680	*9 680	*7 540	*7 540			*5 890	*5 890	9.2
Shoe	6.0 m kg					*8 790	*8 790	*9 980	*9 980	*10 400	*10 400	*9 520	9 210			*5 640	*5 640	10.0
900 mm	4.5 m kg					*16 300	*16 300	*13 530	*13 530	*12 360	12 030	*10 910	9 040			*5 550	*5 550	10.4
CWT	3.0 m kg							*16 530	16 270	*13 270	11 600	10 990	8 820	*7 160	6 950	*5 630	*5 630	10.6
7 250 kg	1.5 m kg							*17 280	15 550	*13 610	11 210	10 770	8 600	*7 610	6 870	*5 820	*5 820	10.7
	0.0 m kg					*15 390	*15 390	*17 060	15 110	*13 410	10 930	10 610	8 450			*6 180	*6 180	10.5
	-1.5 m kg			*9 020	*9 020	*19 640	*19 640	*15 760	14 940	*12 450	10 810	*9 710	8 400			*6 780	*6 780	10.0
	-3.0 m kg					*16 350	*16 350	*13 300	*13 300	*10 450	*10 450	*7 330	*7 330			*6 230	*6 230	9.3
	-4.5 m kg							*9 360	*9 360									8.3
Bent boom	9.0 m kg							*10 270	*10 270							*7 960	*7 960	6.5
6.5 m	7.5 m kg							*11 340	*11 340	*9 170	*9 170					*7 300	*7 300	7.8
Arm	6.0 m kg							*12 180	*12 180	*11 100	*11 100					*7 060	*7 060	8.6
3.2 m	4.5 m kg					*17 320	*17 320	*13 710	*13 710	*11 790	*11 790	*8 600	*8 600			*7 100	*7 100	9.1
Shoe	3.0 m kg					*21 030	*21 030	*15 460	*15 460	*12 670	11 720	*11 010	8 880			*7 350	*7 350	9.4
800 mm	1.5 m kg					*23 330	*23 330	*16 850	15 750	*13 410	11 360	10 850	8 700			*7 850	*7 850	9.4
CWT	0.0 m kg					*23 620	*23 620	*17 430	15 320	*13 730	11 090	10 720	8 580			*8 700	8 350	9.2
7 250 kg	-1.5 m kg			*14 870	*14 870	*22 460	*22 460	*17 020	15 150	*13 350	10 980					*10 130	9 000	8.7
	-3.0 m kg			*23 760	*23 760	*19 980	*19 980	*15 420	15 210	*11 730	11 060					*10 730	10 400	7.9
	-4.5 m kg					*15 630	*15 630	*11 800	*11 800							*9 950	*9 950	6.6
Bent boom	9.0 m kg															*6 170	*6 170	7.4
6.5 m	7.5 m kg									*9 030	*9 030					*5 730	*5 730	8.6
Arm	6.0 m kg									*10 190	*10 190	*7 430	*7 430			*5 570	*5 570	9.3
3.9 m	4.5 m kg					*15 310	*15 310	*12 560	*12 560	*10 990	*10 990	*9 560	9 180			*5 580	*5 580	9.8
Shoe	3.0 m kg					*19 220	*19 220	*14 460	*14 460	*12 000	11 860	*10 510	8 960			*5 760	*5 760	10.1
800 mm	1.5 m kg					*22 270	*22 270	*16 150	15 920	*12 930	11 430	10 880	8 730			*6 110	*6 110	10.1
CWT	0.0 m kg			*9 000	*9 000	*23 500	*23 500	*17 140	15 360	*13 510	11 090	10 690	8 540			*6 690	*6 690	9.8
7 250 kg	-1.5 m kg	*9 270	*9 270	*13 970	*13 970	*23 110	*23 110	*17 210	15 070	*13 510	10 900	10 600	8 460			*7 640	*7 640	9.4
	-3.0 m kg	*14 670	*14 670	*20 430	*20 430	*21 350	*21 350	*16 210	15 020	*12 610	10 880					*9 290	9 000	8.6
	-4.5 m kg			*23 940	*23 940	*17 970	*17 970	*13 720	*13 720	*9 850	*9 850					*9 800	*9 800	7.5
Straight boom	10.5 m kg					*13 120	*13 120									*10 090	*10 090	5.5
6.8 m	9.0 m kg					*11 700	*11 700	*12 030	*12 030							*8 290	*8 290	7.3
Arm	7.5 m kg					*10 870	*10 870	*11 990	*11 990	*11 680	*11 680					*7 520	*7 520	8.5
3.2 m	6.0 m kg			*11 010	*11 010	*12 760	*12 760	*13 390	*13 390	*12 680	12 110	*9 530	8 970			*7 170	*7 170	9.2
Shoe	4.5 m kg					*21 200	*21 200	*16 060	*16 060	*13 180	11 770	11 020	8 870			*7 050	*7 050	9.7
800 mm	3.0 m kg							*17 120	15 880	*13 630	11 390	10 840	8 690			*7 150	*7 150	10.0
CWT	1.5 m kg							*17 450	15 290	*13 730	11 070	10 670	8 530			*7 420	*7 360	10.0
7 250 kg	0.0 m kg					*13 620	*13 620	*16 720	14 990	*13 190	10 870	*10 400	8 440			*7 940	*7 580	9.8
	-1.5 m kg					*18 120	*18 120	*14 870	*14 870	*11 790	10 820	*8 660	8 470			*7 700	*7 700	9.3
	-3.0 m kg					*13 840	*13 840	*11 790	*11 790	*9 090	*9 090					*6 190	*6 190	8.5
	-4.5 m kg															*10 530	*10 530	4.0
Straight boom	12.0 m kg																	
6.8 m	10.5 m kg							*9 680	*9 680							*7 470	*7 470	6.6
Arm	9.0 m kg							*9 630	*9 630	*9 020	*9 020					*6 410	*6 410	8.2
3.9 m	7.5 m kg							*9 280	*9 280	*9 680	*9 680	*7 540	*7 540			*5 890	*5 890	9.2
Shoe	6.0 m kg	</																

LIFTING CAPACITY EC480EHR with mechanically retractable undercarriage

At the arm end without bucket.

For lifting capacity including bucket, simply subtract actual weight of the direct fit bucket or the bucket with quick fit from the following values.

	Lifting hook related to ground level	1.5 m		3.0 m		4.5 m		6.0 m		7.5 m		9.0 m		10.5 m		Max. reach		m		
		Along UC	Across UC	Along UC	Across UC	Along UC	Across UC	Along UC	Across UC	Along UC	Across UC	Along UC	Across UC	Along UC	Across UC	Along UC	Across UC			
Bent boom	9.0 m kg									*10 770	*10 770					*9 830	*9 830	7.6		
7 m	7.5 m kg									*11 910	*11 910					*9 330	*9 330	8.7		
Arm	6.0 m kg									*12 660	*12 660	*11 990	10 890			*9 190	*9 190	9.5		
3.35 m	4.5 m kg					*21 680	*21 680	*16 460	*16 460	*13 920	*13 920	*12 540	10 640			*9 320	*9 060	9.9		
Shoe	3.0 m kg					*24 150	*24 150	*19 070	*18 900	*15 360	*13 570	*13 200	10 310			*9 710	*8 580	10.1		
900 mm	1.5 m kg					*16 690	*16 690	*21 140	*17 970	*16 620	*13 020	*12 870	10 000			*10 400	*8 440	10.1		
CWT	0.0 m kg					*20 540	*20 540	*22 220	*17 410	*16 510	*12 640	*12 630	9 780			*11 110	*8 620	9.8		
9 750 kg	-1.5 m kg			*15 320	*15 320	*28 740	*27 260	*22 260	*17 190	*16 310	*12 450	*12 540	9 690			*11 910	*9 220	9.3		
	-3.0 m kg			*24 960	*24 960	*27 600	*27 490	*21 190	*17 240	*16 340	*12 480					*13 580	*10 480	8.6		
	-4.5 m kg			*31 570	*31 570	*23 930	*23 930	*18 520	*17 580							*14 190	*13 140	7.4		
Bent boom	9.0 m kg															*7 870	*7 870	8.3		
7 m	7.5 m kg											*9 310	*9 310			*7 520	*7 520	9.3		
Arm	6.0 m kg									*11 820	*11 820	*11 240	11 090			*7 430	*7 430	10.0		
3.9 m	4.5 m kg							*15 320	*15 320	*13 160	*13 160	*11 920	10 790			*7 540	*7 540	10.4		
Shoe	3.0 m kg					*25 080	*25 080	*18 080	*18 080	*14 700	*13 770	*12 790	10 430	*8 940	8 160	*7 850	*7 850	10.6		
900 mm	1.5 m kg					*21 910	*21 910	*20 420	*18 230	*16 120	*13 160	*12 960	10 080	*9 400	7 990	*8 370	*7 890	10.6		
CWT	0.0 m kg			*8 450	*8 450	*22 190	*22 190	*21 870	*17 540	*16 590	*12 710	*12 660	9 800			*9 210	*8 030	10.3		
9 750 kg	-1.5 m kg	*10 980	*10 980	*15 030	*15 030	*27 700	*27 190	*22 310	*17 200	*16 310	*12 450	*12 500	9 650			*10 540	*8 510	9.9		
	-3.0 m kg	*17 290	*17 290	*22 480	*22 480	*28 670	*27 300	*21 690	*17 140	*16 250	*12 390	*12 530	9 670			*12 290	*9 500	9.1		
	-4.5 m kg			*32 210	*32 210	*25 680	*25 680	*19 710	*17 370	*15 260	*12 590					*13 700	*11 500	8.0		
	-6.0 m kg					*20 180	*20 180	*15 100	*15 100							*13 650	*13 650	6.4		
Straight boom	12.0 m kg															*14 080	*14 080	4.9		
7.5 m	10.5 m kg							*15 030	*15 030							*10 970	*10 970	7.2		
Arm	9.0 m kg							*14 550	*14 550	*14 300	*14 300					*9 720	*9 720	8.6		
3.35 m	7.5 m kg							*15 010	*15 010	*14 510	*14 510	*13 220	10 710			*9 110	*9 110	9.6		
Shoe	6.0 m kg					*22 720	*22 720	*18 080	*18 080	*15 240	*14 140	*13 420	10 540			*8 820	*8 420	10.3		
900 mm	4.5 m kg							*20 010	*19 030	*16 200	*13 550	*13 130	10 250	10 250	8 000	*8 770	*7 780	10.7		
CWT	3.0 m kg							*21 640	*17 910	*16 850	*12 960	*12 790	9 920	10 120	7 860	*8 930	*7 460	10.9		
9 750 kg	1.5 m kg							*22 240	*17 160	*16 340	*12 490	*12 500	9 650	9 990	7 740	*9 310	*7 400	10.8		
	0.0 m kg							*21 630	*16 820	*16 040	*12 210	*12 320	9 480	9 940	7 700	*9 810	*7 600	10.6		
	-1.5 m kg					*17 660	*17 660	*19 930	*16 780	*15 960	*12 130	*12 280	9 440			*10 210	*8 120	10.1		
	-3.0 m kg					*19 980	*19 980	*17 120	*16 980	*13 960	*12 240	*10 590	9 600			*9 140	*9 110	9.4		
	-6.0 m kg															*10 420	*10 420	6.0		
Straight boom	12.0 m kg															*8 570	*8 570	7.9		
7.5 m	10.5 m kg									*10 970	*10 970					*7 730	*7 730	9.2		
Arm	9.0 m kg									*12 320	*12 320	*9 600	*9 600			*7 300	*7 300	10.2		
3.9 m	7.5 m kg							*12 200	*12 200	*12 880	*12 880	*12 170	10 910			*7 090	*7 090	10.8		
Shoe	6.0 m kg					*14 580	*14 580	*14 860	*14 860	*14 630	*14 380	*12 960	10 700	*9 770	8 220	*7 900	*7 070	11.2		
900 mm	4.5 m kg							*19 200	*19 200	*15 690	*13 770	*13 270	10 370	10 360	8 090	*7 070	*7 070	11.2		
CWT	3.0 m kg							*21 080	*18 250	*16 700	*13 130	*12 890	10 020	10 170	7 920	*7 200	*6 960	11.4		
9 750 kg	1.5 m kg							*22 100	*17 350	*16 460	*12 590	*12 550	9 700	10 000	7 750	*7 480	*6 900	11.4		
	0.0 m kg							*11 880	*11 880	*21 970	*16 870	*16 080	*12 240	*12 320	9 480	*9 890	*7 640	*7 060	11.1	
	-1.5 m kg							*17 680	*17 680	*20 710	*16 720	*15 920	*12 090	*12 220	9 380	*9 900	*7 650	*8 710	*7 480	10.7
	-3.0 m kg							*22 290	*22 290	*18 340	*16 830	*14 850	*12 130	*11 730	9 450	*9 030	*8 290	10.0		
	-4.5 m kg									*14 620	*14 620	*11 710	*11 710					9.0		
Bent boom	9.0 m kg									*10 770	*10 770					*9 830	*9 830	7.6		
7 m	7.5 m kg									*11 910	*11 910					*9 330	*9 330	8.7		
Arm	6.0 m kg									*12 660	*12 660	*11 990	10 790			*9 190	*9 190	9.5		
3.35 m	4.5 m kg					*21 680	*21 680	*16 460	*16 460	*13 920	*13 920	*12 540	10 540			*9 320	*8 970	9.9		
Shoe	3.0 m kg					*24 150	*24 150	*19 070	*18 720	*15 360	*13 440	*13 070	10 210			*9 710	*8 490	10.1		
800 mm	1.5 m kg					*16 690	*16 690	*21 140	*17 790	*16 620	*12 890	*12 740	9 900			*10 400	*8 350	10.1		
CWT	0.0 m kg					*20 540	*20 540	*22 220	*17 230	*16 340	*12 510	*12 500	9 670			*10 990	*8 530	9.8		
9 750 kg	-1.5 m kg			*15 320	*15 320	*28 740	*26 980	*22 260	*17 010	*16 140	*12 320	*12 410	9 580			*11 790	*9 120	9.3		
	-3.0 m kg			*24 960	*24 960	*27 600	*27 210	*21 190	*17 060	*16 170	*12 350					*13 440	*10 370	8.6		
	-4.5 m kg			*31 570	*31 570	*23 930	*23 930	*18 520	*17 400							*14 190	*13 010	7.4		
Bent boom	9.0 m kg															*7 870	*7 870	8.3		
7 m	7.5 m kg											*9 310	*9 310			*7 520	*7 520	9.3		
Arm	6.0 m kg									*11 820	*11 820	*11 240	10 990			*7 430	*7 430	10.0		
3.9 m	4.5 m kg							*15 320	*15 320	*13 160	*13 160	*11 920	10 690			*7 540	*7 540	10.4		
Shoe	3.0 m kg					*25 080	*25 080	*18 080	*18 080	*14 700	*13 630	*12 790	10 330	*8 940	8 080	*7 850	*7 850	10.6		
800 mm	1.5 m kg					*21 910	*21 910	*20 420	*18 050	*16 120	*13 030	*12 820	9 980	*9 400	7 900	*8 370	*7 800	10.6		
CWT	0.0 m kg			*8 450	*8 450	*22 190	*22 190	*21 870	*17 360	*16 420	*12 580	*12 530	9 700			*9 210	*7 940	10.3		
9 750 kg	-1.5 m kg	*10 980	*10 980	*15 030	*15 030	*27 700	*26 920	*22 310	*17 020	*16 140	*12 320	*12 370	9 540			*10 540	*8 410	9.9		
	-3.0 m kg	*17 290	*17 290	*22 480	*22 480	*28 670	*27 020	*21 690	*16 970	*16 080	*12 260	*12 390	9 570			*12 160	*9 400	9.1		
	-4.5 m kg			*32 210	*32 210	*25 680	*25 680	*19 710	*17 190	*15 260	*12 460					*13 700	*11 380	8.0		
	-6.0 m kg					*20 180	*20 180	*15 100	*15 100							*13 650	*13 650	6.4		
Straight boom	12.0 m kg															*14 080	*14 080	4.9		
7.5 m	10.5 m kg							*15 030	*15 030							*10 970	*10 970	7.2		
Arm	9.0 m kg							*14 550	*14 550	*14 300	*14 300					*9 720	*9 720	8.6		
3.35 m	7.5 m kg							*15 010	*15 010	*14 510	*14 450	*13 220	10 610			*9 110	*9 110	9.6		
Shoe	6.0 m kg					*22 720	*22 720	*18 080	*18 080	*15 240	*14 010	*13 310	10 440			*8 820	*8 330	10.3		
800 mm	4.5 m kg							*20 010	*18 860	*16 200	*13 420	*13 000	10 140	10 150	7 910	*8 770	*7 690	10.7		
CWT	3.0 m kg							*21 640	*17 730	*16 680	*12 830	*12 660	9 820	10 010	7 780	*8 930	*7 370	10.9		
9 750 kg	1.5 m kg							*22 240	*16 980	*16 170	*12 360	*12 370	9 550	9 880	7 650	*9 310	*7 320	10.8		
	0.0 m kg							*21 630	*16 640	*15 870	*12 080	*12 180	9 370	9 830	7 610	*9 700	*7 510	10.6		
	-1.5 m kg							*17 660	*17 660	*19 930	*16 610	*15 790	*11 990	9 340		*10 210	*8 030	10.1		
	-3.0 m kg																			

Specifications.

LIFTING CAPACITY EC480EHR with mechanically retractable undercarriage

At the arm end without bucket.

For lifting capacity including bucket, simply subtract actual weight of the direct fit bucket or the bucket with quick fit from the following values.

	Lifting hook related to ground level	1.5 m		3.0 m		4.5 m		6.0 m		7.5 m		9.0 m		10.5 m		Max. reach		m		
		Along UC	Across UC	Along UC	Across UC	Along UC	Across UC	Along UC	Across UC	Along UC	Across UC	Along UC	Across UC	Along UC	Across UC	Along UC	Across UC			
Bent boom	9.0 m	kg								*10 770	*10 770					*9 830	*9 830	7.6		
7 m	7.5 m	kg								*11 910	*11 910					*9 330	*9 330	8.7		
Arm	6.0 m	kg								*12 660	*12 660	*11 990	10 690			*9 190	*9 190	9.5		
3.35 m	4.5 m	kg				*21 680	*21 680	*16 460	*16 460	*13 920	*13 920	*12 540	10 440			*9 320	8 810	9.9		
Shoe	3.0 m	kg				*24 150	*24 150	*19 070	*18 560	*15 360	*13 320	*12 930	10 110			*9 710	8 410	10.1		
7 00 mm	1.5 m	kg				*16 690	*16 690	*21 140	17 620	16 570	12 770	12 600	9 800			*10 400	8 260	10.1		
CWT	0.0 m	kg				*20 540	*20 540	*22 220	17 070	16 160	12 390	12 360	9 580			10 870	8 450	9.8		
9 750 kg	-1.5 m	kg		*15 320	*15 320	*28 740	26 730	*22 260	16 850	15 960	12 200	12 270	9 490			11 650	9 030	9.3		
	-3.0 m	kg		*24 960	*24 960	*27 600	26 960	*21 190	16 900	15 900	12 230					13 290	10 270	8.6		
	-4.5 m	kg		*31 570	*31 570	*23 930	*23 930	*18 520	17 230							14 190	12 880	7.4		
Bent boom	9.0 m	kg														*7 870	*7 870	8.3		
7 m	7.5 m	kg										*9 310	*9 310			*7 520	*7 520	9.3		
Arm	6.0 m	kg								*11 820	*11 820	*11 240	10 890			*7 430	*7 430	10.0		
3.9 m	4.5 m	kg						*15 320	*15 320	*13 160	*13 160	*11 920	10 590			*7 540	*7 540	10.4		
Shoe	3.0 m	kg				*25 080	*25 080	*18 080	*18 080	*14 700	*13 510	*12 790	10 230	*8 940	8 000	*7 850	*7 850	10.6		
700 mm	1.5 m	kg				*21 910	*21 910	*20 420	17 880	*16 120	12 910	12 690	9 880	*9 400	7 820	*8 370	7 720	10.6		
CWT	0.0 m	kg			*8 450	*8 450	*22 190	*22 190	*21 870	17 190	16 240	12 460	12 390	9 600		*9 210	7 860	10.3		
9 750 kg	-1.5 m	kg	*10 980	*10 980	*15 030	*15 030	*27 700	26 660	*22 310	16 850	15 960	12 200	12 230	9 450		*10 540	8 330	9.9		
	-3.0 m	kg	*17 290	*17 290	*22 480	*22 480	*28 670	26 760	*21 690	16 800	15 900	12 140	12 250	9 470		12 020	9 300	9.1		
	-4.5 m	kg			*32 210	*32 210	*25 680	*25 680	*19 710	17 020	*15 260	12 340				13 700	11 270	8.0		
	-6.0 m	kg					*20 180	*20 180	*15 100	*15 100						13 650	13 650	6.4		
Straight boom	12.0 m	kg														14 080	14 080	4.9		
7.5 m	10.5 m	kg						*15 030	*15 030							*10 970	*10 970	7.2		
Arm	9.0 m	kg						*14 550	*14 550	*14 300	*14 300					*9 720	*9 720	8.6		
3.35 m	7.5 m	kg						*15 010	*15 010	*14 510	14 330	*13 220	10 510			*9 110	*9 110	9.6		
Shoe	6.0 m	kg				*22 720	*22 720	*18 080	*18 080	*15 240	13 890	13 170	10 340			*8 820	8 250	10.3		
700 mm	4.5 m	kg						*20 010	18 690	*16 200	13 300	12 860	10 050	10 030	7 830	*8 770	7 610	10.7		
CWT	3.0 m	kg						*21 640	17 570	16 500	12 710	12 520	9 720	9 890	7 700	*8 930	7 300	10.9		
9 750 kg	1.5 m	kg						*22 240	16 820	16 000	12 230	12 230	9 450	9 760	7 580	*9 310	7 240	10.8		
	0.0 m	kg						*21 630	16 480	15 700	11 950	12 040	9 280	9 720	7 530	9 590	7 440	10.6		
	-1.5 m	kg						*17 660	*17 660	*19 930	16 440	15 610	11 870	12 010	9 240	*10 210	7 950	10.1		
	-3.0 m	kg						*19 980	*19 980	*17 120	16 630	*13 960	11 990	*10 590	9 400	*9 140	8 920	9.4		
	-6.0 m	kg														10 420	*10 420	6.0		
Straight boom	12.0 m	kg																		
7.5 m	10.5 m	kg								*10 970	*10 970					*8 570	*8 570	7.9		
Arm	9.0 m	kg								*12 320	*12 320	*9 600	*9 600			*7 730	*7 730	9.2		
3.9 m	7.5 m	kg						*12 200	*12 200	*12 880	*12 880	*12 170	10 710			*7 300	*7 300	10.2		
Shoe	6.0 m	kg				*14 580	*14 580	*14 860	*14 860	*14 630	14 130	*12 960	10 500	*9 770	8 060	*7 090	*7 090	10.8		
700 mm	4.5 m	kg						*19 200	19 110	*15 690	13 510	12 990	10 170	10 140	7 930	*7 070	*7 070	11.2		
CWT	3.0 m	kg						*21 080	17 910	16 690	12 880	12 620	9 820	9 950	7 750	*7 200	6 810	11.4		
9 750 kg	1.5 m	kg						*22 100	17 010	16 110	12 340	12 280	9 500	9 780	7 580	*7 480	6 750	11.4		
	0.0 m	kg						*11 880	*11 880	*21 970	16 530	15 730	11 990	12 050	9 280	9 660	7 480	*7 950	6 910	11.1
	-1.5 m	kg						*17 680	*17 680	*20 710	16 380	15 570	11 830	11 950	9 180	9 670	7 490	*8 710	7 320	10.7
	-3.0 m	kg						*22 290	*22 290	*18 340	16 490	*14 850	11 870	*11 730	9 250	*9 030	8 110	10.0		
	-4.5 m	kg								*14 620	*14 620	*11 710	*11 710					9.0		
Bent boom	9.0 m	kg								*10 770	*10 770					*9 830	*9 830	7.6		
7 m	7.5 m	kg								*11 910	*11 910					*9 330	*9 330	8.7		
Arm	6.0 m	kg								*12 660	*12 660	*11 990	10 610			*9 190	*9 190	9.5		
3.35 m	4.5 m	kg				*21 680	*21 680	*16 460	*16 460	*13 920	*13 830	*12 540	10 360			*9 320	8 810	9.9		
Shoe	3.0 m	kg				*24 150	*24 150	*19 070	18 420	*15 360	13 210	12 820	10 030			*9 710	8 340	10.1		
600 mm	1.5 m	kg				*16 690	*16 690	*21 140	17 490	16 440	12 670	12 500	9 720			*10 400	8 190	10.1		
CWT	0.0 m	kg				*20 540	*20 540	*22 220	16 930	16 030	12 290	12 260	9 500			10 770	8 370	9.8		
9 750 kg	-1.5 m	kg		*15 320	*15 320	*28 740	26 510	*22 260	16 710	15 820	12 100	12 160	9 410			11 550	8 960	9.3		
	-3.0 m	kg		*24 960	*24 960	*27 600	26 740	*21 190	16 760	15 850	12 130					13 170	10 180	8.6		
	-4.5 m	kg		*31 570	*31 570	*23 930	*23 930	*18 520	17 090							14 190	12 780	7.4		
Bent boom	9.0 m	kg														*7 870	*7 870	8.3		
7 m	7.5 m	kg										*9 310	*9 310			*7 520	*7 520	9.3		
Arm	6.0 m	kg								*11 820	*11 820	*11 240	10 810			*7 430	*7 430	10.0		
3.9 m	4.5 m	kg						*15 320	*15 320	*13 160	*13 160	*11 920	10 510			*7 540	*7 540	10.4		
Shoe	3.0 m	kg				*25 080	*25 080	*18 080	*18 080	*14 700	*13 410	*12 790	10 150	*8 940	7 930	*7 850	7 800	10.6		
600 mm	1.5 m	kg				*21 910	*21 910	*20 420	17 750	*16 120	12 810	12 580	9 800	*9 400	7 750	*8 370	7 660	10.6		
CWT	0.0 m	kg				*8 450	*8 450	*22 190	*22 190	*21 870	17 050	16 110	12 360	12 290	9 520	*9 210	7 890	10.3		
9 750 kg	-1.5 m	kg	*10 980	*10 980	*15 030	*15 030	*27 700	26 440	*22 310	16 710	15 820	12 090	12 120	9 370		*10 540	8 250	9.9		
	-3.0 m	kg	*17 290	*17 290	*22 480	*22 480	*28 670	26 550	*21 690	16 660	15 760	12 040	12 150	9 390		11 920	9 220	9.1		
	-4.5 m	kg			*32 210	*32 210	*25 680	*25 680	*19 710	16 880	*15 260	12 240				13 700	11 170	8.0		
	-6.0 m	kg					*20 180	*20 180	*15 100	*15 100						13 650	13 650	6.4		
Straight boom	12.0 m	kg																		
7.5 m	10.5 m	kg						*15 030	*15 030							*10 970	*10 970	7.2		
Arm	9.0 m	kg						*14 550	*14 550	*14 300	*14 300					*9 720	*9 720	8.6		

LIFTING CAPACITY EC480EHR with hydraulically retractable undercarriage

At the arm end without bucket.

For lifting capacity including bucket, simply subtract actual weight of the direct fit bucket or the bucket with quick fit from the following values.

	Lifting hook related to ground level	1.5 m		3.0 m		4.5 m		6.0 m		7.5 m		9.0 m		10.5 m		Max. reach		m		
		Along UC	Across UC	Along UC	Across UC	Along UC	Across UC	Along UC	Across UC	Along UC	Across UC	Along UC	Across UC	Along UC	Across UC	Along UC	Across UC			
Bent boom	9.0 m kg									*10 770	*10 770					*9 830	*9 830	7.6		
7 m	7.5 m kg									*11 910	*11 910					*9 330	*9 330	8.7		
Arm	6.0 m kg									*12 660	*12 660	*11 990	11 850			*9 190	*9 190	9.5		
3.35 m	4.5 m kg					*21 680	*21 680	*16 460	*16 460	*13 920	*13 920	*12 540	11 590			*9 320	*9 320	9.9		
Shoe	3.0 m kg					*24 150	*24 150	*19 070	*19 070	*15 360	*14 770	*13 300	11 270			*9 710	*9 410	10.1		
900 mm	1.5 m kg					*16 690	*16 690	*21 140	19 600	*16 620	14 230	*14 000	10 960			*10 400	9 270	10.1		
CWT	0.0 m kg					*20 540	*20 540	*22 220	19 050	*17 420	13 850	13 890	10 730			*11 520	9 480	9.8		
9 750 kg	-1.5 m kg			*15 320	*15 320	*28 740	*28 740	*22 260	18 830	*17 550	13 660	13 800	10 640			13 110	10 130	9.3		
	-3.0 m kg			*24 960	*24 960	*27 600	*27 600	*21 190	18 870	*16 700	13 690					*13 980	11 500	8.6		
	-4.5 m kg			*31 570	*31 570	*23 930	*23 930	*18 520	*18 520							*14 190	*14 190	7.4		
Bent boom	9.0 m kg															*7 870	*7 870	8.3		
7 m	7.5 m kg											*9 310	*9 310			*7 520	*7 520	9.3		
Arm	6.0 m kg									*11 820	*11 820	*11 240	*11 240			*7 430	*7 430	10.0		
3.9 m	4.5 m kg							*15 320	*15 320	*13 160	*13 160	*11 920	11 750			*7 540	*7 540	10.4		
Shoe	3.0 m kg					*25 080	*25 080	*18 080	*18 080	*14 700	*14 700	*12 790	11 390	*8 940	*8 940	*7 850	*7 850	10.6		
900 mm	1.5 m kg					*21 910	*21 910	*20 420	19 860	*16 120	14 370	*13 630	11 040	*9 400	8 780	*8 370	*8 370	10.6		
CWT	0.0 m kg			*8 450	*8 450	*22 190	*22 190	*21 870	19 170	*17 140	13 920	13 930	10 760			*9 210	8 830	10.3		
9 750 kg	-1.5 m kg	*10 980	*10 980	*15 030	*15 030	*27 700	*27 700	*22 310	18 830	*17 540	13 660	13 760	10 600			*10 540	9 360	9.9		
	-3.0 m kg	*17 290	*17 290	*22 480	*22 480	*28 670	*28 670	*21 690	18 780	*17 100	13 600	*13 610	10 630			*12 830	10 440	9.1		
	-4.5 m kg			*32 210	*32 210	*25 680	*25 680	*19 710	19 000	*15 260	13 800					*13 700	12 600	8.0		
	-6.0 m kg					*20 180	*20 180	*15 100	*15 100							*13 650	*13 650	6.4		
Straight boom	12.0 m kg															*14 080	*14 080	4.9		
7.5 m	10.5 m kg							*15 030	*15 030							*10 970	*10 970	7.2		
Arm	9.0 m kg							*14 550	*14 550	*14 300	*14 300					*9 720	*9 720	8.6		
3.35 m	7.5 m kg							*15 010	*15 010	*14 510	*14 510	*13 220	11 660			*9 110	*9 110	9.6		
Shoe	6.0 m kg					*22 720	*22 720	*18 080	*18 080	*15 240	*15 240	*13 420	11 500			*8 820	*8 820	10.3		
900 mm	4.5 m kg							*20 010	*20 010	*16 200	14 760	*13 840	11 200	*11 210	8 790	*8 770	8 550	10.7		
CWT	3.0 m kg							*21 640	19 550	*17 060	14 160	14 050	10 880	11 150	8 650	*8 930	8 220	10.9		
9 750 kg	1.5 m kg							*22 240	18 790	*17 480	13 690	13 760	10 600	11 020	8 530	*9 310	8 160	10.8		
	0.0 m kg							*21 630	18 460	*17 230	13 410	13 580	10 430	10 970	8 490	*9 940	8 380	10.6		
	-1.5 m kg					*17 660	*17 660	*19 930	18 420	*16 130	13 330	*12 980	10 400			*10 210	8 940	10.1		
	-3.0 m kg					*19 980	*19 980	*17 120	*17 120	*13 960	13 450	*10 590	10 550			*9 140	*9 140	9.4		
	-6.0 m kg															*10 420	*10 420	6.0		
Straight boom	12.0 m kg																			
7.5 m	10.5 m kg									*10 970	*10 970					*8 570	*8 570	7.9		
Arm	9.0 m kg									*12 320	*12 320	*9 600	*9 600			*7 730	*7 730	9.2		
3.9 m	7.5 m kg							*12 200	*12 200	*12 880	*12 880	*12 170	11 870			*7 300	*7 300	10.2		
Shoe	6.0 m kg					*14 580	*14 580	*14 860	*14 860	*14 630	*14 630	*12 960	11 650	*9 770	9 010	*7 090	*7 090	10.8		
900 mm	4.5 m kg							*19 200	*19 200	*15 690	14 970	*13 480	11 330	11 390	8 880	*7 070	*7 070	11.2		
CWT	3.0 m kg							*21 080	19 880	*16 700	14 330	*13 990	10 970	11 210	8 710	*7 200	*7 200	11.4		
9 750 kg	1.5 m kg							*22 100	18 990	*17 340	13 800	13 810	10 650	11 030	8 540	*7 480	*7 480	11.4		
	0.0 m kg							*11 880	*11 880	*21 970	18 500	*17 360	13 440	13 580	10 430	10 920	8 430	*7 950	7 800	11.1
	-1.5 m kg							*17 680	*17 680	*20 710	18 360	*16 590	13 290	*13 440	10 340	*10 450	8 440	*8 710	8 260	10.7
	-3.0 m kg							*22 290	*22 290	*18 340	*18 340	*14 850	13 330	*11 730	10 400	*9 030	*9 030	10.0		
	-4.5 m kg									*14 620	*14 620	*11 710	*11 710					9.0		
Bent boom	9.0 m kg									*10 770	*10 770					*9 830	*9 830	7.6		
7 m	7.5 m kg									*11 910	*11 910					*9 330	*9 330	8.7		
Arm	6.0 m kg									*12 660	*12 660	*11 990	11 750			*9 190	*9 190	9.5		
3.35 m	4.5 m kg					*21 680	*21 680	*16 460	*16 460	*13 920	*13 920	*12 540	11 500			*9 320	*9 320	9.9		
Shoe	3.0 m kg					*24 150	*24 150	*19 070	*19 070	*15 360	14 650	*13 300	11 170			*9 710	9 320	10.1		
800 mm	1.5 m kg					*16 690	*16 690	*21 140	19 440	*16 620	14 110	*14 000	10 860			*10 400	9 180	10.1		
CWT	0.0 m kg					*20 540	*20 540	*22 220	18 890	*17 420	13 730	13 770	10 640			*11 520	9 390	9.8		
9 750 kg	-1.5 m kg			*15 320	*15 320	*28 740	*28 740	*22 260	18 660	*17 550	13 540	13 680	10 550			13 000	10 040	9.3		
	-3.0 m kg			*24 960	*24 960	*27 600	*27 600	*21 190	18 710	*16 700	13 570					*13 980	11 400	8.6		
	-4.5 m kg			*31 570	*31 570	*23 930	*23 930	*18 520	*18 520							*14 190	*14 190	7.4		
Bent boom	9.0 m kg															*7 870	*7 870	8.3		
7 m	7.5 m kg											*9 310	*9 310			*7 520	*7 520	9.3		
Arm	6.0 m kg									*11 820	*11 820	*11 240	*11 240			*7 430	*7 430	10.0		
3.9 m	4.5 m kg							*15 320	*15 320	*13 160	*13 160	*11 920	11 650			*7 540	*7 540	10.4		
Shoe	3.0 m kg					*25 080	*25 080	*18 080	*18 080	*14 700	*14 700	*12 790	11 290	*8 940	8 870	*7 850	*7 850	10.6		
800 mm	1.5 m kg					*21 910	*21 910	*20 420	19 700	*16 120	14 250	*13 630	10 940	*9 400	8 700	*8 370	*8 370	10.6		
CWT	0.0 m kg			*8 450	*8 450	*22 190	*22 190	*21 870	19 010	*17 140	13 800	13 800	10 670			*9 210	8 750	10.3		
9 750 kg	-1.5 m kg	*10 980	*10 980	*15 030	*15 030	*27 700	*27 700	*22 310	18 870	*17 540	13 540	13 640	10 510			*10 540	9 270	9.9		
	-3.0 m kg	*17 290	*17 290	*22 480	*22 480	*28 670	*28 670	*21 690	18 620	*17 100	13 480	*13 610	10 530			*12 830	10 350	9.1		
	-4.5 m kg			*32 210	*32 210	*25 680	*25 680	*19 710	18 840	*15 260	13 680					*13 700	12 490	8.0		
	-6.0 m kg					*20 180	*20 180	*15 100	*15 100							*13 650	*13 650	6.4		
Straight boom	12.0 m kg																			
7.5 m	10.5 m kg							*15 030	*15 030							*10 970	*10 970	7.2		
Arm	9.0 m kg							*14 550	*14 550	*14 300	*14 300					*9 720	*9 720	8.6		
3.35 m	7.5 m kg							*15 010	*15 010	*14 510	*14 510	*13 220	11 570			*9 110	*9 110	9.6		
Shoe	6.0 m kg					*22 720	*22 720	*18 080	*18 080	*15 240	15 230	*13 420	11 400			*8 820	*8 820	10.3		
900 mm	4.5 m kg							*20 010	*20 010	*16 200	14 640	*13 840	11 110	11 190	8 710	*8 770	8 480	10.7		
CWT	3.0 m kg							*21 640	19 390	*17 060	14 050	13 930	10 790	11 050	8 580	*8 930	8 140	10.9		
9 750 kg	1.5 m kg							*22 240	18 630	*17 480	13 570	13 640	10 510	10 920	8 450	*9 310	8 080	10.8		
	0.0 m kg							*21 630	18 290	*17 230	13 290	13 450	10 340	10 870	8 410	*9 940	8 300	10.6		
	-1.5 m kg					*17 660	*17 660	*19 930	18 260	*16 130	13 210	*12 980	10 300			*10 210	8 860	10.1		
	-3.0 m kg																			

Specifications.

LIFTING CAPACITY EC480EHR with hydraulically retractable undercarriage

At the arm end without bucket.

For lifting capacity including bucket, simply subtract actual weight of the direct fit bucket or the bucket with quick fit from the following values.

	Lifting hook related to ground level	1.5 m		3.0 m		4.5 m		6.0 m		7.5 m		9.0 m		10.5 m		Max. reach		m
		Along UC	Across UC	Along UC	Across UC	Along UC	Across UC	Along UC	Across UC	Along UC	Across UC	Along UC	Across UC	Along UC	Across UC	Along UC	Across UC	
Bent boom	9.0 m	kg								*10 770	*10 770					*9 830	*9 830	7.6
7 m	7.5 m	kg								*11 910	*11 910					*9 330	*9 330	8.7
Arm	6.0 m	kg								*12 660	*12 660	*11 990	11 660			*9 190	*9 190	9.5
3.35 m	4.5 m	kg				*21 680	*21 680	*16 460	*16 460	*13 920	*13 920	*12 540	11 410			*9 320	*9 320	9.9
Shoe	3.0 m	kg				*24 150	*24 150	*19 070	*19 070	*15 360	14 540	*13 300	11 080			*9 710	9 240	10.1
700 mm	1.5 m	kg				*16 690	*16 690	*21 140	19 280	*16 620	13 990	13 890	10 770			*10 400	9 100	10.1
CWT	0.0 m	kg				*20 540	*20 540	*22 220	18 730	*17 420	13 610	13 650	10 540			*11 520	9 310	9.8
9 750 kg	-1.5 m	kg		*15 320	*15 320	*28 740	*28 740	*22 260	18 500	*17 550	13 420	13 560	10 460			12 880	9 950	9.3
	-3.0 m	kg		*24 960	*24 960	*27 600	*27 600	*21 190	18 550	*16 700	13 450					*13 980	11 300	8.6
	-4.5 m	kg		*31 570	*31 570	*23 930	*23 930	*18 520	*18 520							*14 190	14 130	7.4
Bent boom	9.0 m	kg														*7 870	*7 870	8.3
7 m	7.5 m	kg										*9 310	*9 310			*7 520	*7 520	9.3
Arm	6.0 m	kg								*11 820	*11 820	*11 240	*11 240			*7 430	*7 430	10.0
3.9 m	4.5 m	kg						*15 320	*15 320	*13 160	*13 160	*11 920	11 560			*7 540	*7 540	10.4
Shoe	3.0 m	kg				*25 080	*25 080	*18 080	*18 080	*14 700	*14 700	*12 790	11 200	*8 940	8 800	*7 850	*7 850	10.6
700 mm	1.5 m	kg				*21 910	*21 910	*20 420	19 540	*16 120	14 130	*13 630	10 850	*9 400	8 620	*8 370	*8 370	10.6
CWT	0.0 m	kg		*8 450	*8 450	*22 190	*22 190	*21 870	18 850	*17 140	13 680	13 680	10 570			*9 210	8 670	10.3
9 750 kg	-1.5 m	kg	*10 980	*10 980	*15 030	*15 030	*27 700	*27 700	*22 310	18 510	*17 540	13 420	10 420			*10 540	9 190	9.9
	-3.0 m	kg	*17 290	*17 290	*22 480	*22 480	*28 670	*28 670	*21 690	18 460	*17 100	13 360	13 540	10 440		*12 830	10 250	9.1
	-4.5 m	kg			*32 210	*32 210	*25 680	*25 680	*19 710	18 680	*15 260	13 560				*13 700	12 380	8.0
	-6.0 m	kg					*20 180	*20 180	*15 100	*15 100					*13 650	*13 650	6.4	
Straight boom	12.0 m	kg														*14 080	*14 080	4.9
7.5 m	10.5 m	kg						*15 030	*15 030							*10 970	*10 970	7.2
Arm	9.0 m	kg						*14 550	*14 550	*14 300	*14 300					*9 720	*9 720	8.6
3.35 m	7.5 m	kg						*15 010	*15 010	*14 510	*14 510	*13 220	11 480			*9 110	*9 110	9.6
Shoe	6.0 m	kg				*22 720	*22 720	*18 080	*18 080	*15 240	15 110	*13 420	11 310			*8 820	*8 820	10.3
700 mm	4.5 m	kg						*20 010	*20 010	*16 200	14 520	*13 840	11 010	11 090	8 630	*8 770	8 400	10.7
CWT	3.0 m	kg						*21 640	19 230	*17 060	13 930	13 810	10 690	10 950	8 500	*8 930	8 070	10.9
9 750 kg	1.5 m	kg						*22 240	18 470	*17 480	13 460	13 520	10 420	10 820	8 380	*9 310	8 010	10.8
	0.0 m	kg						*21 630	18 130	*17 230	13 170	13 330	10 240	10 770	8 330	*9 940	8 230	10.6
	-1.5 m	kg				*17 660	*17 660	*19 930	18 100	*16 130	13 090	*12 980	10 210			*10 210	8 780	10.1
	-3.0 m	kg				*19 980	*19 980	*17 120	*17 120	*13 960	13 210	*10 590	10 360			*9 140	*9 140	9.4
	-6.0 m	kg													*10 420	*10 420	6.0	
Straight boom	12.0 m	kg														*8 570	*8 570	7.9
7.5 m	10.5 m	kg								*12 320	*12 320	*9 600	*9 600			*7 730	*7 730	9.2
Arm	9.0 m	kg						*12 200	*12 200	*12 880	*12 880	*12 170	11 680			*7 300	*7 300	10.2
3.9 m	7.5 m	kg						*14 860	*14 860	*14 630	*14 630	*12 960	11 470	*9 770	8 860	*7 090	*7 090	10.8
Shoe	6.0 m	kg			*14 580	*14 580		*19 200	*19 200	*15 690	14 730	*13 480	11 140	11 190	8 730	*7 070	*7 070	11.2
700 mm	4.5 m	kg						*21 080	19 560	*16 700	14 100	13 910	10 780	11 010	8 550	*7 200	*7 200	11.4
CWT	3.0 m	kg						*22 100	18 670	*17 340	13 560	13 570	10 470	10 830	8 380	*7 480	7 480	11.4
9 750 kg	1.5 m	kg						*11 880	*11 880	*21 970	18 180	*17 360	13 210	13 340	10 240	*7 950	7 650	11.1
	0.0 m	kg						*17 680	*17 680	*20 710	18 040	*16 590	13 050	13 240	10 150	*10 450	8 290	10.7
	-1.5 m	kg						*22 290	*22 290	*18 340	18 140	*14 850	13 100	*11 730	10 220	*9 030	8 960	10.0
	-3.0 m	kg								*14 620	*14 620	*11 710	*11 710					9.0
	-4.5 m	kg																
Bent boom	9.0 m	kg								*10 770	*10 770					*9 830	*9 830	7.6
7 m	7.5 m	kg								*11 910	*11 910					*9 330	*9 330	8.7
Arm	6.0 m	kg								*12 660	*12 660	*11 990	11 570			*9 190	*9 190	9.5
3.35 m	4.5 m	kg				*21 680	*21 680	*16 460	*16 460	*13 920	*13 920	*12 540	11 310			*9 320	*9 320	9.9
Shoe	3.0 m	kg				*24 150	*24 150	*19 070	*19 070	*15 360	14 420	*13 300	10 990			*9 710	9 160	10.1
600 mm	1.5 m	kg				*16 690	*16 690	*21 140	19 120	*16 620	13 870	13 770	10 680			*10 400	9 020	10.1
CWT	0.0 m	kg				*20 540	*20 540	*22 220	18 560	*17 420	13 490	13 530	10 450			*11 520	9 230	9.8
9 750 kg	-1.5 m	kg		*15 320	*15 320	*28 740	*28 740	*22 260	18 340	*17 460	13 300	13 440	10 360			12 770	9 870	9.3
	-3.0 m	kg		*24 960	*24 960	*27 600	*27 600	*21 190	18 390	*16 700	13 330					*13 980	11 200	8.6
	-4.5 m	kg		*31 570	*31 570	*23 930	*23 930	*18 520	*18 520							*14 190	14 010	7.4
Bent boom	9.0 m	kg														*7 870	*7 870	8.3
7 m	7.5 m	kg										*9 310	*9 310			*7 520	*7 520	9.3
Arm	6.0 m	kg								*11 820	*11 820	*11 240	*11 240			*7 430	*7 430	10.0
3.9 m	4.5 m	kg						*15 320	*15 320	*13 160	*13 160	*11 920	11 470			*7 540	*7 540	10.4
Shoe	3.0 m	kg				*25 080	*25 080	*18 080	*18 080	*14 700	14 620	*12 790	11 100	*8 940	8 720	*7 850	*7 850	10.6
600 mm	1.5 m	kg				*21 910	*21 910	*20 420	19 380	*16 120	14 010	*13 630	10 750	*9 400	8 540	*8 370	*8 370	10.6
CWT	0.0 m	kg		*8 450	*8 450	*22 190	*22 190	*21 870	18 890	*17 140	13 560	13 560	10 480			*9 210	8 590	10.3
9 750 kg	-1.5 m	kg	*10 980	*10 980	*15 030	*15 030	*27 700	*27 700	*22 310	18 350	*17 460	13 300	13 400	10 320		*10 540	9 110	9.9
	-3.0 m	kg	*17 290	*17 290	*22 480	*22 480	*28 670	*28 670	*21 690	18 300	*17 100	13 240	13 420	10 340		*12 830	10 160	9.1
	-4.5 m	kg			*32 210	*32 210	*25 680	*25 680	*19 710	18 520	*15 260	13 440				*13 700	12 270	8.0
	-6.0 m	kg					*20 180	*20 180	*15 100	*15 100					*13 650	*13 650	6.4	
Straight boom	12.0 m	kg														*14 080	*14 080	4.9
7.5 m	10.5 m	kg						*15 030	*15 030							*10 970	*10 970	7.2
Arm	9.0 m	kg						*14 550	*14 550	*14 300	*14 300					*9 720	*9 720	8.6
3.35 m	7.5 m																	

Equipment.

STANDARD EQUIPMENT EC380EHR, EC480EHR

Engine
Turbocharged, 4 stroke diesel engine with water cooling, direct injection and charged air cooler that meets Tier4f/EU Stage IV requirements.
Air intake heater
Fuel filter and water separator
Fuel filler pump: 50 l/min, with automatic shut-off
Alternator, 80 A
Precleaner, Cyclone
Electric/Electronic control system
Contronics
Advanced mode control system
Self-diagnostic system
Machine status indication
Engine speed sensing power control
Automatic idling system
One-touch power boost
Safety stop/start function
Adjustable two LCD color monitors
Master electrical disconnect switch
Engine restart prevention circuit
High-capacity halogen lights(Optional selection to LED):
Frame-mounted 2
Boom-mounted 4
Batteries, 2 x 12 V / 200 Ah
Start motor, 24 V / 7 kW
CareTrack
Engine emergency stop switch
Overload Warning (TMI & Slew limitation)
Front camera for demolition
Rear view camera on counterweight
Cleaning air gun
Dust suppression system
Hydraulic system
Hose rupture valve for UHR:
boom cylinder and arm
Hydraulic piping:
Hammer & shear:
Two pump flow
Slope & rotator
Oil leak (drain) line
Quick fit piping
Additional return filter
Overload warning device
Automatic sensing hydraulic system
Summation system
Boom priority
Arm priority
Swing priority
Boom and arm regeneration valves
Slew anti-rebound valves
Boom and arm holding valves
Multi-stage filtering system
Cylinder cushioning
Cylinder contamination seals
Auxiliary hydraulic valve
Automatic two-speed travel motors
Hydraulic oil, ISO VG 46
Superstructure
Full height counterweight: 7 250 kg (EC380EHR)
Full height counterweight: 9 750 kg (EC480EHR)
Additional counterweight for high reach: 2 750 kg (EC380EHR)
Additional counterweight for high reach: 3 350 kg (EC480EHR manual CWT)
Additional counterweight for high reach: 3 500 kg (EC480EHR hyd removable CWT)
HD undercover plate (8 mm)
HD double thickness side doors with micro mesh
Access way with handrail
Punched metal anti-slip plates
Tool storage area
Undercarriage
Fixed undercarriage
Swing ring guard
HD Undercover plate (10 mm)
Hydraulic track adjusters
Greased and sealed track link
Standard track guards
Foot support bar

Tilting cab, and interior
Tilting cab
Seat, mech. susp w/ heater, w/o X-Isolator
Control Joystick with 3 switch & 1 prop. control
Air-conditioner climate control
Silicon oil and rubber mounts with spring
Adjustable operator seat and joystick control console
AM/FM stereo with CD Player and MP3 input with bluetooth
Flexible antenna
Hydraulic safety lock lever
Cab, all-weather sound suppressed, includes:
Cup holder
Door locks
Tinted glass
Floor mat
Horn
Large storage area
Seat belt, 3 inch retractable
Safety glass(front and side)
LEXAN glass(roof)
Sun shields, front, roof, rear
Windshield wipers with intermittent feature(front and roof)
Master key
Frame mounted Falling object guard (FOG)

OPTIONAL EQUIPMENT EC380EHR, EC480EHR

Engine
Block heater: 120 V, 240 V
Oil bath pre-cleaner
Diesel coolant heater ,10kW
Water separator with heater
Reversible cooling fan
Electric
Extra lights(halogen or LED):
Cab mounted x2 (front) x1 (rear)
Counterweight mounted x1
Travel alarm
Anti-theft system
Rotating warning beacon
Side view camera
Hydraulic system
Hose rupture valve for digging boom : Arm
Hydraulic piping:
Work tool management system (Up to 20 programmable memories)
Grapple for digging boom
Quick fit piping for digging boom
Volvo hydraulic quick fit, (SQF S3,VQC-HU,DR38) for digging boom (EC380EHR)
Volvo hydraulic quick fit, (SQF S3,VQC-HU,DR48) for digging boom (EC480EHR)
Straight travel pedal
Hydraulic oil, ISO VG 32, 68
Hydraulic oil, biodegradable 46
Hydraulic oil, longlife oil 32, 46, 68
Boom cylinder guard
Bucket cylinder guard
Superstructure
Side Impact Protection System
Side walk-way for tilting cab
Cab and interior
Seat, Mech. susp w/o heater, w/o X-Isolator
Seat, Air susp w/ heater, w/ X-Isolator
Pilot control pattern change
Smoker kit (ashtray & lighter)
Safety net for front window
Lower wiper with intermittent control
Specific key
Undercarriage
Hydraulically retractable undercarriage
Mechanically retractable undercarriage (EC480EHR)
Full track guards
Track shoes
600/700/800/900 mm triple grouser shoes
600 mm double grouser shoes
Digging equipment
Digging boom Straight 6,8 m / Bent 6,5 m (EC380EHR)
Arm: 3.2 m / 3.9 m (EC380EHR)
Digging boom Straight 7.5 m / Bent 7.0 m (EC480EHR)
Arm: 3.35 m / 3.9 m (EC480EHR)
Manual centralized lubrication
High reach
Boom HR-3 piece: 23 m (EC380EHR)
Boom HR-3 piece: 28 m (EC480EHR)
Additional front camera for demolition(left hand side)
Service
Spare parts
Tool kit, full scale
Tool kit, daily maintenance

Not all products are available in all markets. Under our policy of continuous improvement, we reserve the right to change specifications and design without prior notice. The illustrations do not necessarily show the standard version of the machine.

VOLVO

Volvo Construction Equipment

www.volvoce.com