

Volvo Construction Equipment
Building Tomorrow



EC750E_{HR}

Volvo Excavators



Reaching new heights

PATENTED HYDRAULIC MODULAR JOINTS

- Change from high reach to digging configuration using two-pin hydraulic lock
- Second hydraulic modular joint on extension boom
- Common interface between extension boom and digging boom for quick configuration



EASY TO TRANSPORT

- Retractable undercarriage
- Easy-to-remove track frames
- Ability to self-disassemble/reassemble

AN EXCEPTIONAL HIGH-REACH EXCAVATOR

- Maximum pin height of 36m (118ft)
- 10m (33ft) reach below ground

OUTSTANDING STABILITY

- All-new undercarriage specifically developed for demolition segment – heavier and wider than the larger EC950E undercarriage
- 0.5m (1.6ft) longer and 1m (3.2ft) wider than conventional EC750E
- Impressive track gauge of 4.3m (17.4ft)
- Additional 4 tonnes (4.4 tons) of counterweight
- Total machine weight of 104 tonnes (115 tons)

VISIBLY IN CONTROL

- Large area of laminated glazing for good sight lines of work area
- Comfortable and spacious cab with convenient layout of controls
- Cabin tilts to 30°, reducing operator strain and fatigue
- Dust suppression system and camera on demolition arm as standard – delivering high quality images to in-cab display
- Real-time Total Moment Indicator as standard

ADDED PROTECTION

- Volvo Care Cab with Falling Object Guard (FOG) and side impact protection (SIPS)
- Heavy-duty belly cover and under cover
- Swing ring protection guard
- Added protection on boom and crusher cylinders
- Full support of Volvo aftermarket and dealer network

MULTI-USE DEMOLITION MACHINE

- Work underground and under water
- Offered with two high-reach demolition boom sets and one digging boom set with extension
- Carry a tool of to 3.6 tonnes (4 tons) when working at maximum height
- Second high-reach configuration has 26m (85ft) maximum pin height for use with larger 5 tonne (5.5ton) tool
- Digging boom set with 4.4m (14.4ft) extension allows for 18m (59ft) pin height while using a tool up to 9.1 tonnes (10 tons)

Volvo EC750E_{HR} in detail

Engine

The latest generation, Volvo engine Tier 4f (Stage IV) emissions certified diesel engine fully meets the demands of the latest, emissions regulations. Featuring Volvo Advanced Combustion Technology (V-ACT), it is designed to deliver superior performance and fuel efficiency. The engine uses precise, highpressure fuel injectors, turbo charger and air-to-air intercooler, and electronic engine controls to optimize machine performance. Air Filter: 3-stage with precleaner. Automatic Idling System: Reduces engine speed to idle when the levers and pedals are not activated resulting in less fuel consumption and low cab noise levels.

Engine Tier 4f (Stage IV)	Volvo	D16J
Max power at	r/s / r/min	30 / 1,800
Net, ISO 9249/SAE J1349	kW (hp)	392 (526)
Gross, ISO 14396/SAE J1995	kW (hp)	393 (527)
Max torque at	Nm (lbf ft) / r/min	2,570 (1,896) / 1,350
No. of cylinders		6
Displacement	l (in ³)	16.1 (982)
Bore	mm (in)	144 (5.67)
Stroke	mm (in)	165 (6.5)

Electrical system

High-capacity electrical system that is well protected. Waterproof double-lock harness plugs are used to secure corrosion-free connections. The main relays and solenoid valves are shielded to prevent damage. The master switch is standard. Contronics provides advanced monitoring of machine functions and important diagnostic information.

Voltage	V	24
Batteries	V	2 x 12
Battery capacity	Ah	210
Alternator	V / Ah	28 / 80

Swing system

The swing system uses an axial piston motors, driving a planetary gearbox for maximum torque. An automatic holding brake and anti-rebound valve are standard.

Max. slew speed	r/min	7
Max. slew torque	kNm (lbf ft)	275.3 (203,051)

Drive

Each track is powered by an automatic two-speed shift travel motor. The track brakes are multi-disc, spring-applied and hydraulic released. The travel motor, brake and planetary gears are well protected within the track frame.

Max. drawbar pull	kN (lb)	472 (106,110)
Max. travel speed (1st Gear/2nd Gear)	km/h (mi/h)	2.9/4.6 (1.8/2.9)
Gradeability	°	33

Undercarriage

The undercarriage has a robust X-shaped frame. Greased and sealed track chains are standard.

Track pads		2 x 52
Link pitch	mm (in)	260.4 (10.25)
Shoe width, triple grouser	mm (in)	-
Shoe width, double grouser	mm (in)	650 / 750 / 900 (26 / 30 / 36)
Bottom rollers		2 x 9
Top rollers		2 x 3

* Retractable undercarriage

Service refill capacities

Fuel tank	l (gal)	800 (211.3)
AdBlue/DEF tank	l (gal)	80 (21.1)
Hydraulic system, total	l (gal)	655 (173.0)
Hydraulic tank	l (gal)	350 (92.5)
Engine oil	l (gal)	52 (13.7)
Engine coolant	l (gal)	66 (17.4)
Slew reduction unit	l (gal)	2 x 6.8 (2 x 1.8)
Travel reduction unit	l (gal)	2 x 13.5 (2 x 3.6)

Hydraulic system

The new electro-hydraulic system and new MCV (main control valve) use intelligent technology to control on-demand flow for high-productivity, high-digging capacity and excellent fuel consumption. The following important functions are included in the system:
 Summation system: Combines the flow of both hydraulic pumps to a single function to ensure quick cycle times and high productivity.
 Boom priority: Gives priority to the boom operation for faster raising when loading or performing deep excavations.
 Arm priority: Gives priority to the arm operation for faster cycle times in leveling and for increased bucket filling when digging.
 Swing priority: Gives priority to swing functions for faster simultaneous operations.
 Regeneration system: Prevents cavitation and provides flow to other movements during simultaneous operations for maximum productivity.
 Power boost: All digging and lifting forces are increased.
 Holding valves: Boom and arm holding valves prevent the digging equipment from creeping

Main pump, Type 2 x variable displacement axial piston pumps

Maximum flow	l/min (gal/min)	2 x 450 (2 x 119)
--------------	-----------------	-------------------

Pilot pump, Type Gear pump

Maximum flow	l/min (gal/min)	34.5 (9.1)
--------------	-----------------	------------

Hydraulic motors

Travel: Variable displacement axial piston motor with mechanical brake
 Slew: Fixed displacement axial piston motor with mechanical brake

Relief valve setting

Implement	Mpa (psi)	33.8/35.8 (4,902/5,192)
Travel circuit	Mpa (psi)	33.8 (4,902)
Slew circuit	Mpa (psi)	26.5 (3,843)
Pilot circuit	Mpa (psi)	3.9 (566)

Base boom cylinder

Quantity		2
Bore	ø mm	230 (9.1)
Stroke	mm	1 697 (66.8)

Tilting Cab

The standard hydraulically tilting cabin tilts up to 30 degrees to enhance visibility and reduce operator fatigue and neck strain on high-reach jobs. The operator's cab has easy access via a wide door opening. The cab is supported on hydraulic dampening mounts to reduce shock and vibration levels. These along with sound absorbing lining provide low noise levels. The cab has excellent all-round visibility, especially upward, with a wide front glass and top wiper. Integrated air-conditioning and heating system: The pressurized and filtered cab air is supplied by an automatically-controlled fan. The air is distributed throughout the cab from 14 vents. Ergonomic operator's seat: The adjustable seat and joystick console move independently to accommodate the operator. The seat has 12 different adjustments plus a seat belt for the operator's comfort and safety. Refrigerant of the type R134a is used when this machine is equipped with air conditioning. Contains fluorinated greenhouse gas R134a, Global Warming Potential 1.430 t CO₂-eq

Sound Level

Sound level in cab according to ISO 6396		
LpA	dB(A)	72
External sound level according to ISO 6395 and EU Noise Directive (2000/14/EC) and 474-1:2006 +A1:2009		
LwA	dB(A)	108

MACHINE WEIGHTS

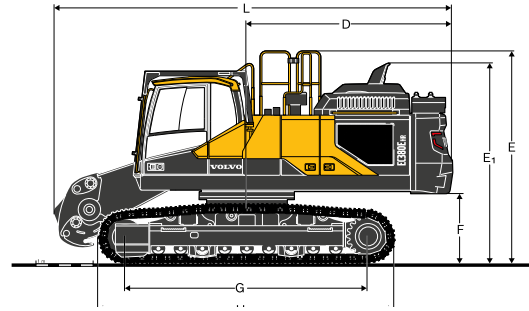
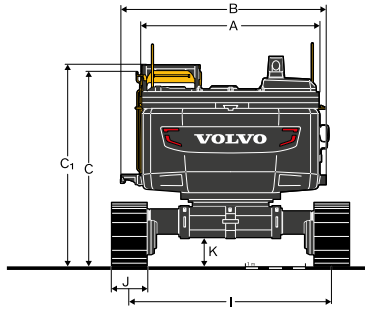
EC750EHR (Hydraulically removable counterweight)	750 mm (30") shoe			
	Hydr. retracted undercarriage			
At Demolition Equipment				
Base machine (with undercarriage)	kg	lb	79,342	174,919
Undercarriage (2)	kg	lb	39,248	86,527
3-piece demolition equipment (incl cradle)	kg	lb	19,500	42,990
Additional CWT	kg	lb	4,186	9,229
Total weight	kg	lb	103,028	227,138
At Digging Equipment				
Base machine (with undercarriage)	kg	lb	79,342	174,919
Undercarriage (2)	kg	lb	39,248	86,527
Digging equipment with 3.35m (11') arm (incl cradle)	kg	lb	10,880	23,986
Boom extension (incl cradle)	kg	lb	6,780	14,947
Total weight without boom extension	kg	lb	89,460	197,225
Additional CWT	kg	lb	4,186	9,229
Total weight with boom extension	kg	lb	101,188	223,081

GROUND PRESSURE

Description	Shoe width		Operating weight		Ground pressure		Overall width	
	mm	in	kg	lb	kPa	psi	mm	ft in
Demolition mode; hydraulically retractable undercarriage, with 13.88 m (45.5 ft) base boom + demo. boom, 2.6 m (8.5 ft) inter. arm, 7.41 m (24.3 ft) demolition arm, 5,000 kg (11,023 lb) crusher, 15,000 kg (33,069 lb) counterweight								
Double grouser	650	26	100,183	220,865	132.3	19.2	3,795 / 3,700*	12'5" / 12'2"*
	750	30	100,945	222,545	115.5	16.8	3,800	12'6"
	900	36	102,088	225,065	97.3	14.1	3,950	13'0"
Demolition mode; hydraulically retractable undercarriage, with 12.67 m (41.6 ft) base boom + EXT. boom + demo. boom, 4.2 m (13.8 ft) digging arm, 9 100 kg (20,062 lb) tool, 15,000 kg (33,069 lb) counterweight								
Double grouser	650	26	107,678	237,389	142.2	20.6	3,795 / 3,700*	12'5" / 12'2"*
	750	30	108,440	239,069	124.1	18.0	3,800	12'6"
	900	36	109,583	241,589	104.5	15.2	3,950	13'0"
Demolition mode; hydraulically retractable undercarriage, with 8.3 m (27.2 ft) base boom + digging boom, 4.2 m (13.8 ft) digging arm, 7,260 kg (16,006 lb) tool, 11,200 kg (24,692 lb) counterweight								
Double grouser	650	26	95,875	211,368	126.6	18.4	3,795 / 3,700*	12'5" / 12'2"*
	750	30	96,637	213,048	110.6	16.0	3,800	12'6"
	900	36	97,780	215,568	93.2	13.5	3,950	13'0"

* without welding block

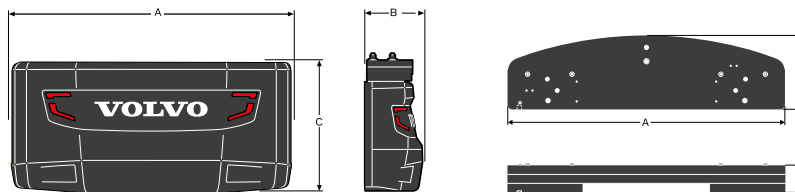
Specifications



DIMENSIONS

Description	Unit		EC750EHR	
			Undercarriage hydraulically retractable	
A Width superstructure	mm	ft in	3,420	11'3"
B Overall width with walk way (Only left side)	mm	ft in	-	-
Overall width with SIPS(both side) & Cab entrance step(Left side)	mm	ft in	3,904	12'10"
Overall width without SIPS(both side) & Cab entrance step(Left side)	mm	ft in	-	-
C Overall height	mm	ft in	3,484	11'5"
C1 Overall height (incl. FOG)	mm	ft in	3,562	11'8"
D Tail swing radius	mm	ft in	4,238	13'11"
E Overall height of Handrail	mm	ft in	3,941	12'11"
E Overall height of Diffuser	mm	ft in	3,790	12'5"
F Minimum Counterweight clearance *	mm	ft in	1,480	4'10"
G Tumbler length	mm	ft in	5,280	17'4"
H Track length	mm	ft in	6,518	21'5"
I Track gauge (extended)	mm	ft in	4,300	14'1"
Track gauge (retracted)	mm	ft in	3,050	10'0"
J Shoe width	mm	ft in	750	2'6"
K Min. ground clearance *	mm	ft in	563	1'10"
L Overall length	mm	ft in	8,728	28'8"

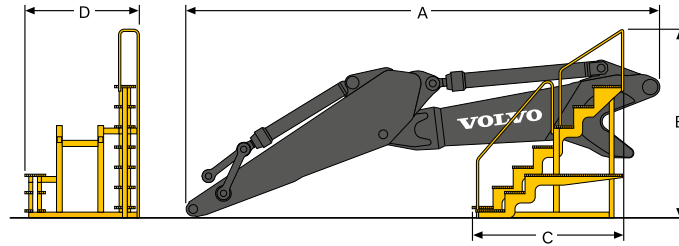
* With shoe grouser



DIMENSIONS OF THE COUNTERWEIGHT

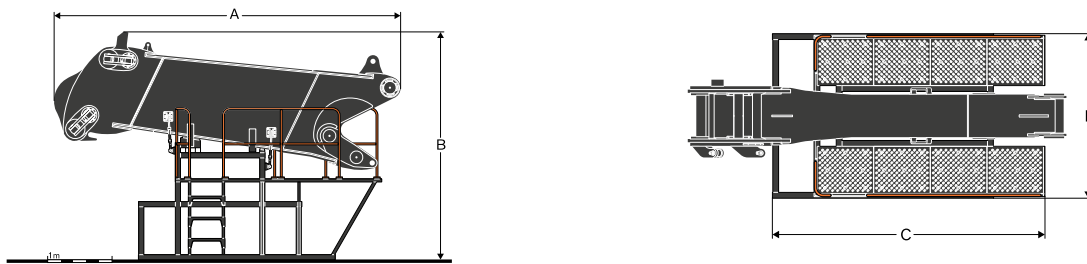
Description	Unit		EC750EHR			
			standard		additional cwt w/ hyd removable	
A Width counterweight	mm	ft in	3,406	11'2"	3,240	10'8"
B Thickness counterweight	mm	ft in	808	2'8"	658	2'2"
C Height counterweight	mm	ft in	1,747	5'9"	360	1'2"
Total weight counterweight	kg	lb	11,200	24,692	4,186	9,229

CAUTION: The machine can transported with the digging boom fitted. If it's transported without digging boom but with additional counterweight, take care of stability (tilting back) during the loading / unloading on truck.



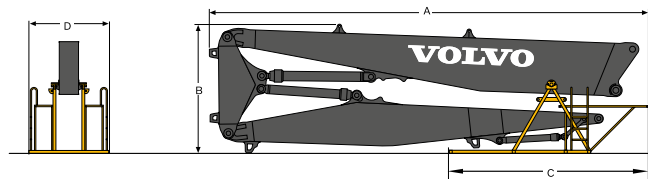
DIMENSIONS OF DIGGING EQUIPMENT

Description	Unit		EC750EHR 4.2 m (13'9")	
	mm	ft in		
A Length - mounting to arm end	mm	ft in	8,190	26'10"
B Overall height	mm	ft in	2,945	9'8"
C Length of support cradle	mm	ft in	2,565	8'5"
D Width of support cradle	mm	ft in	2,080	6'10"
Weight of digging boom with transport cradle	kg	lb	11,075	24,416



DIMENSIONS OF DIGGING BOOM EXTENSION

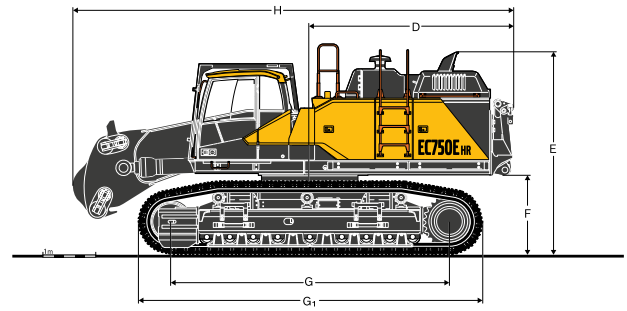
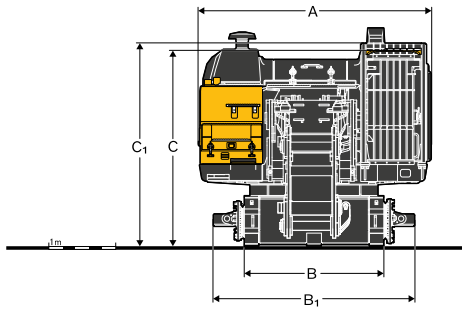
Description	Unit		EC750EHR	
	mm	ft in		
A Overall length	mm	ft in	5,383	17'8"
B Overall height	mm	ft in	3,584	11'9"
C Length of support cradle	mm	ft in	3,776	12'5"
D Width of support cradle	mm	ft in	2,280	7'6"
Weight, including support cradle	kg	lb	6,618	14,590



DIMENSIONS OF 3-PIECE DEMOLITION BOOM IN SUPPORT CRADLE

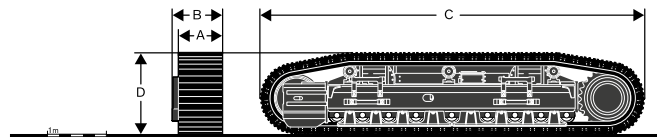
Description	Unit		EC750EHR			
	mm	ft in	26m (85'4")		36m (118'1")	
A Overall length	mm	ft in	11,082	36'4"	17,306	56'9"
B Overall height	mm	ft in	3,569	11'9"	3,597	11'10"
C Length of support cradle	mm	ft in	8,510	27'11"	13,838	45'5"
D Width of support cradle	mm	ft in	2,416	7'11"	2,416	7'11"
Weight of working equipment without attachment, including support cradle	kg	lb	14,240	31,394	19,500	42,990

Specifications



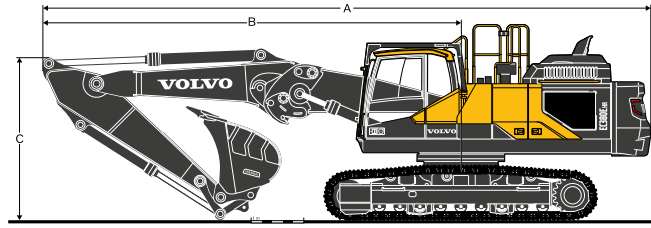
DIMENSION OF BASE MACHINE, TRANSPORTATION MODE

Description	Unit		EC750EHR	
			Hydraulically retractable	Undercarriage
A. Overall width with Handrail on FOG	mm	ft in	3,498	11'6"
B. Width lower frame center	mm	ft in	2,095	6'10"
B1. Overall width lower frame center	mm	ft in	3,044	9'12"
C. Overall height	mm	ft in	2,971	9'9"
C1. Overall height (incl. FOG)	mm	ft in	3,050	10'0"
D. Swing radius center to CWT linkage	mm	ft in	3,867	12'8"
E. Overall height of Diffuser	mm	ft in	3,277	10'9"
F. Minimum upper frame clearance	mm	ft in	921	3'0"
G. Length lower frame center	mm	ft in	2,859	9'5"
G. Overall length lower frame center	mm	ft in	3,781	12'5"
H. Overall length	mm	ft in	8,353	27'5"
Base machine weight	kg	lb	28,895	63,702



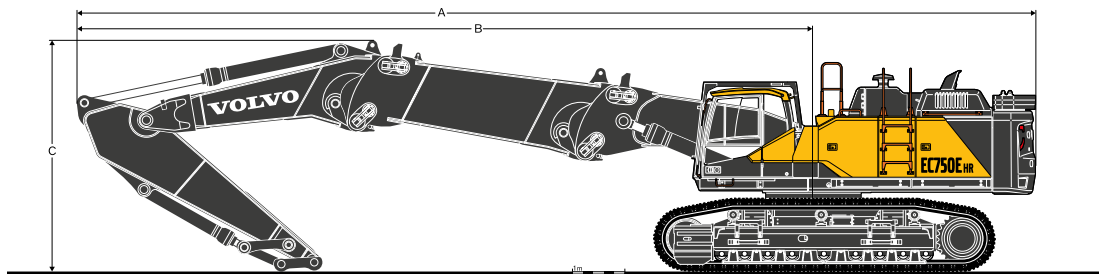
DIMENSION OF BASE MACHINE, TRACK FRAME

Description	Unit		EC750EHR	
			Hydraulically retractable	Undercarriage
A. Width track	mm	ft in	750	2'6"
B. Overall width track and frame	mm	ft in	855	2'10"
C. Length	mm	ft in	6,518	21'5"
D. Height	mm	ft in	1,406	4'7"
Total weight	kg	lb	19,624	43,263



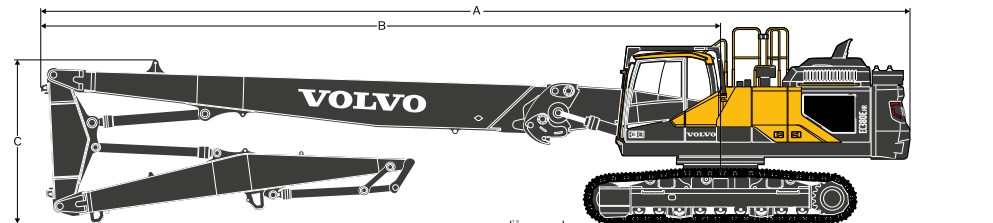
DIMENSIONS WITH DIGGING EQUIPMENT (POSITION FOR TRANSPORT)

Boom		Unit		EC750EHR	
				Straight boom 8.3 m (27'3")	
Arm				4.2 m (13'9")	
A	Overall length	mm	ft in	13,899	45'7"
B	Swing centre to front of equipment	mm	ft in	9,660	31'8"
C	Maximum height of boom in transport position	mm	ft in	4,243	13'11"
Operating weight, excluding bucket		kg	lb	89,377	197,042



DIMENSIONS WITH DIGGING BOOM EXTENSION

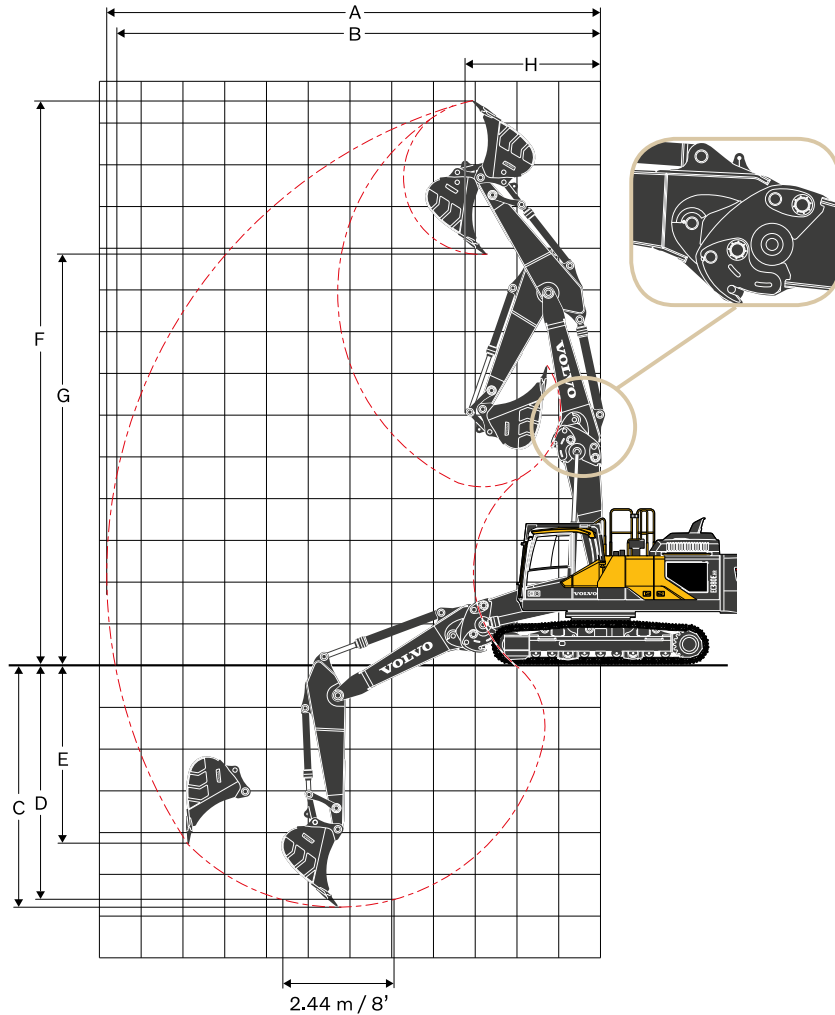
Boom		Unit		EC750EHR	
				Straight Boom 12.7m (41'8")	
Arm				4.2 m (13'9")	
A	Overall length	mm	ft in	18,311	60'1"
B	Swing centre to front of equipment	mm	ft in	14,072	46'2"
C	Maximum height of boom in transport position	mm	ft in	4,418	14'6"
Operating weight, excluding tool , cradle		kg	lb	99,340	219,007



DIMENSIONS WITH 3-PIECE DEMOLITION ATTACHMENT

		Unit		EC750EHR			
				26m (85'4")		36m (118'1")	
A	Overall length	mm	ft in	18,939	62'2"	25,156	82'6"
B	Swing centre to front of equipment	mm	ft in	14,701	48'3"	20,918	68'8"
C	Maximum height of boom in transport position	mm	ft in	3,621	11'11"	3,489	11'5"
Operating weight, excluding crusher		kg	lb	95,945	211,522	100,429	221,408

Specifications

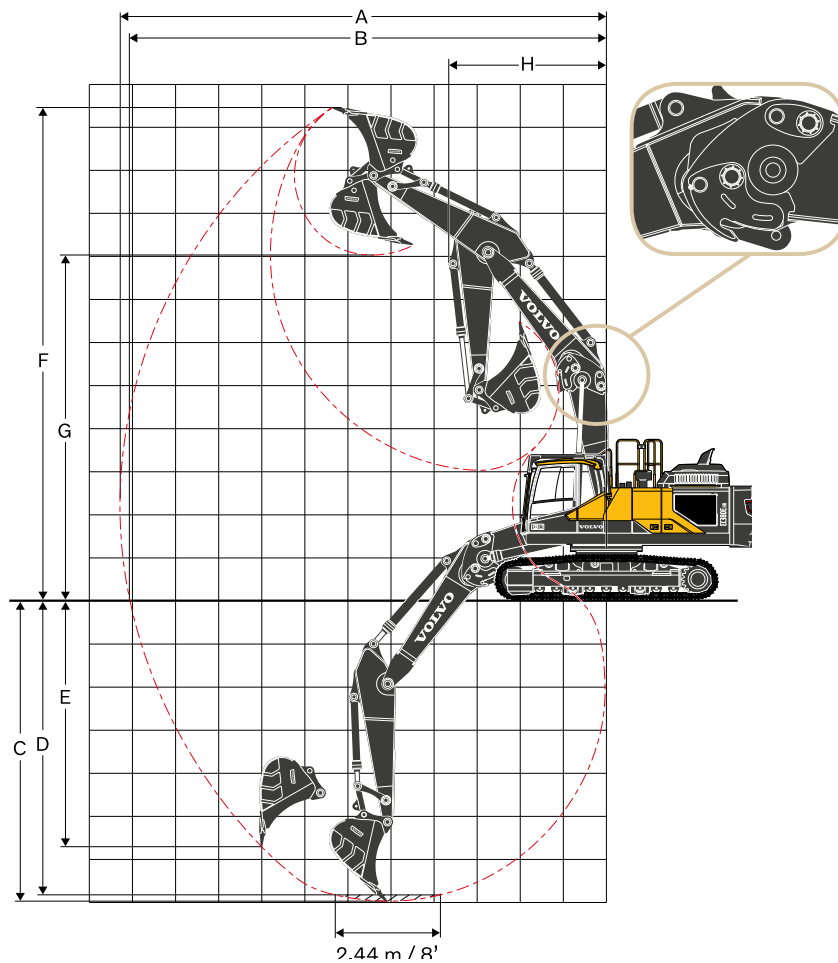


WORKING RANGES WITH STRAIGHT BOOM

		EC750EHR	
Boom		Straight boom 8.3 m (27'3")	
Arm		4.2 m (13'9")	
Bucket tip radius	mm ft in	2,190	7'2"
A Maximum digging reach	mm ft in	14,567	47'10"
B Maximum digging reach on ground	mm ft in	14,339	47'1"
C Maximum digging depth	mm ft in	6,861	22'6"
D Maximum digging depth (2.4 m level)	mm ft in	6,744	22'2"
E Maximum vertical wall digging depth	mm ft in	4,684	15'4"
F Maximum cutting height	mm ft in	15,810	51'10"
G Maximum dumping height	mm ft in	11,465	37'7"
H Minimum front swing radius	mm ft in	4,906	16'1"

DIGGING FORCES WITH STRAIGHT BOOM

		EC750EHR	
Boom		Straight boom 8.3 m (27'3")	
Arm		4.2 m (13'9")	
Bucket tip radius	mm ft in	2,190	7'2"
Breakout force-bucket (Normal/Power boost) ISO	kN lbf	304/317	68,342/71,264
Tearout force-arm (Normal / Power boost) ISO	kN lbf	255/266	57,326/59,799
Rotation angle, bucket	°	173.4	



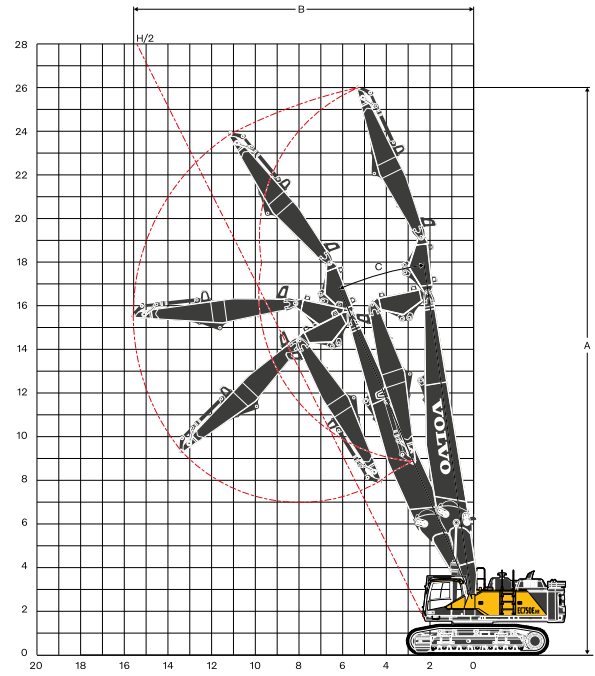
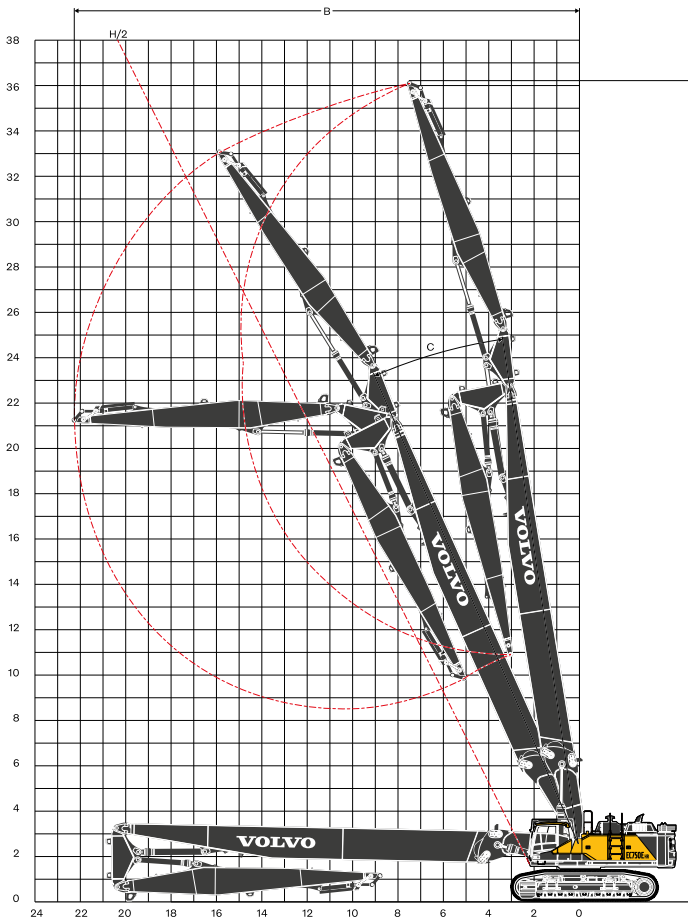
WORKING RANGES WITH BENT BOOM

		EC750EHR	
Boom		Bent boom 7.7 m (25'3")	
Arm		4.2 m (13'9")	
Bucket tip radius	mm ft in	2,190	7'2"
A Maximum digging reach	mm ft in	13,697	44'11"
B Maximum digging reach on ground	mm ft in	13,452	44'2"
C Maximum digging depth	mm ft in	8,324	27'4"
D Maximum digging depth (2.4 m level)	mm ft in	8,207	26'11"
E Maximum vertical wall digging depth	mm ft in	7,257	23'10"
F Maximum cutting height	mm ft in	12,520	41'1"
G Maximum dumping height	mm ft in	8,558	28'1"
H Minimum front swing radius	mm ft in	5,354	17'7"

DIGGING FORCES WITH BENT BOOM

		EC750EHR	
Boom		Bent boom 7.7 m (25'3")	
Arm		4.2 m (13'9")	
Bucket tip radius	mm ft in	2,190	7'2"
Breakout force-bucket (Normal/Power boost) ISO	kN lbf	304/317	68,342/71,264
Tearout force-arm (Normal / Power boost) ISO	kN lbf	255/266	57,326/59,799
Rotation angle. bucket	°	173.4	

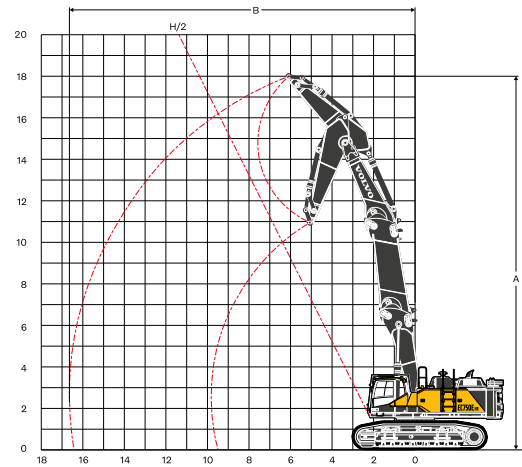
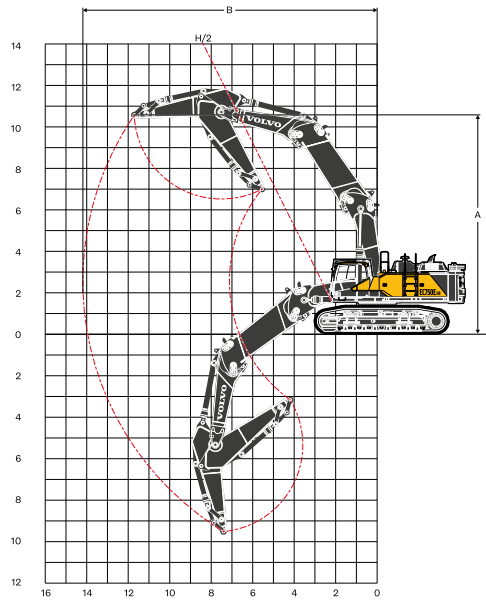
Specifications



WORKING RANGES AND MAX. TOOL WEIGHT (machines with 3-piece demolition boom)

Description	Unit		EC750EHR				
			26m (85'4")		36m (118'1")		
			Undercarriage hydraulically retractable		Undercarriage hydraulically retractable		
A	Maximum pin height	mm	ft in	26,000	85'4"	36,000	118'1"
	Pin height H/2			22,600	74'2"	31,922 / 31,271*	104'9" / 102'7"
B	Maximum pin reach	mm	ft in	15,589	51'2"	22,273 / 20,626*	73'1" / 67'8"
	Pin reach H/2			12,672	41'7"	17,348 / 17,023*	56'11" / 55'10"
	Maximum tool weight	t	lb	5	11,023	3.6	7,937
C	Operating angle		°		23.5		23.5 / 18.5

*Across



WORKING RANGES AND MAX. TOOL WEIGHT (machines with digging boom extension)

EC750EHR

Boom			Straight & Straight Boom 11.9 m (39'1")		Bent & Bent boom 11.0 m (36'1")	
Arm			4.2 m (13'9") arm		4.2 m (13'9") arm	
Description			Undercarriage, hydraulically retractable			
Unit						
A	Maximum pin height	mm ft in	15,083	49'6"	10,570	34'8"
B	Maximum pin reach	mm ft in	15,314	50'3"	14,198	46'7"
	Maximum tool weight	t lb	6.5	14,330	9.5	20,944
C	Maximum pin depth	mm ft in	NO		9,509	31'2"

Specifications

LIFTING CAPACITY EC750EHR

At the arm end without bucket. For lifting capacity including bucket, simply subtract actual weight of the direct fit bucket or the bucket with quick fit from the following values.

	Lifting hook related to ground level	3.0 m, 10 ft		4.5 m, 15 ft		6.0 m, 20 ft		7.5 m, 25 ft		9.0 m, 30 ft		10.5 m, 35 ft		12.0 m, 40 ft		Max. reach								
		Along UC	Across UC	Along UC	Across UC	Along UC	Across UC	Along UC	Across UC	Along UC	Across UC	Along UC	Across UC	Along UC	Across UC	Along UC	Across UC	Max.						
Boom 7.7 m (25'3") Arm 4.2 m (13'9") Shoe 900 mm (36") Hyd. Removal CWT 12,816 kg (28,254 lb)	10.5 m	kg															*11,030	*11,030	8.3 m					
	35 ft	lb															*24,317	*24,317	27.2 ft					
	9 m	kg								*13,480	*13,480						*10,330	*10,330	9.5 m					
	30 ft	lb								*29,718	*29,718						*22,774	*22,774	31.2 ft					
	7.5 m	kg								*16,280	*16,280						*10,030	*10,030	10.4 m					
	25 ft	lb								*35,891	*35,891						*22,112	*22,112	34.1 ft					
	6 m	kg							*21,010	*21,010	*18,880	*18,880	*13,860	*13,860				*10,000	*10,000	11.0 m				
	20 ft	lb							*46,319	*46,319	*41,623	*41,623	*30,556	*30,556				*22,046	*22,046	36.1 ft				
	4.5 m	kg			*40,660	*40,660	*30,390	*30,390	*24,910	*24,910	*21,510	*21,510	*16,830	16,570				*10,180	*10,180	11.3 m				
	15 ft	lb			*89,640	*89,640	*66,998	*66,998	*54,917	*54,917	*47,421	*47,421	*37,104	36,531				*22,443	*22,443	37.1 ft				
	3 m	kg							*33,680	*33,680	*26,770	*26,770	*22,550	20,630	*19,610	15,910				*10,600	*10,600	11.5 m		
	10 ft	lb							*74,252	*74,252	*59,018	*59,018	*49,714	45,481	*43,233	35,076				*23,369	*23,369	37.7 ft		
	1.5 m	kg							*35,820	*35,820	*28,140	25,930	*23,330	19,540	19,220	15,260				*11,280	*11,280	11.5 m		
	5 ft	lb							*78,969	*78,969	*62,038	57,166	*51,434	43,078	42,373	33,643				*24,868	*24,868	37.7 ft		
	0 m	kg				*23,020	*23,020	*36,370	34,780	*28,680	24,580	*23,590	18,660	18,660	14,730				*12,320	*12,320	11.2 m			
	0 ft	lb				*50,750	*50,750	*80,182	76,677	*63,229	54,190	*52,007	41,138	41,138	32,474				*27,161	*27,161	36.7 ft			
	-1.5 m	kg	*17,320	*17,320	*30,250	*30,250	*35,370	33,760	*28,190	23,750	*23,070	18,080	18,330	14,410				*13,900	*13,900	10.8 m				
	-5 ft	lb	*38,184	*38,184	*66,690	*66,690	*77,977	74,428	*62,148	52,360	*50,861	39,860	40,411	31,769				*30,644	*30,644	35.4 ft				
	-3 m	kg	*26,390	*26,390	*40,850	*40,850	*32,840	*32,840	*26,420	23,410	*21,360	17,870						*16,470	15,300	10.1 m				
	-10 ft	lb	*58,180	*58,180	*90,059	*90,059	*72,400	*72,400	*58,246	51,610	*47,091	39,397						*36,310	33,731	33.1 ft				
-4.5 m	kg	*37,440	*37,440	*35,150	*35,150	*28,460	*28,460	*22,860	*22,860	*17,340							*17,070	*17,070	9.1 m					
-15 ft	lb	*82,541	*82,541	*77,492	*77,492	*62,743	*62,743	*50,398	*50,398	*38,228	*38,228						*37,633	*37,633	29.9 ft					
-6 m	kg					*21,180	*21,180	*15,700	*15,700										7.6 m					
-20 ft	lb					*46,694	*46,694	*34,613	*34,613										24.9 ft					
Boom 8.3 m (27'3") Arm 4.2 m (13'9") Shoe 900 mm (36") Hyd. Removal CWT 12,816 kg (28,254 lb)	13.5 m	kg															*16,030	*16,030	5.7 m					
	45 ft	lb															*35,340	*35,340	18.7 ft					
	12 m	kg							*15,460	*15,460							*12,820	*12,820	8.0 m					
	40 ft	lb							*34,083	*34,083							*28,263	*28,263	26.2 ft					
	10.5 m	kg							*16,230	*16,230	*14,450	*14,450					*11,370	*11,370	9.5 m					
	35 ft	lb							*35,781	*35,781	*31,857	*31,857					*25,067	*25,067	31.2 ft					
	9 m	kg							*16,080	*16,080	*16,170	*16,170	*11,340	*11,340				*10,590	*10,590	10.6 m				
	30 ft	lb							*35,450	*35,450	*35,649	*35,649	*25,000	*25,000				*23,347	*23,347	34.8 ft				
	7.5 m	kg							*15,940	*15,940	*17,110	*17,110	*17,300	*17,300	*15,450				*10,180	*10,180	11.3 m			
	25 ft	lb							*35,142	*35,142	*37,721	*37,721	*38,140	*38,140	*34,061	*34,061				*22,443	*22,443	37.1 ft		
	6 m	kg							*22,910	*22,910	*21,010	*21,010	*19,700	*19,700	*17,580	15,940				*9,990	*9,990	11.9 m		
	20 ft	lb							*50,508	*50,508	*46,319	*46,319	*43,431	*43,431	*38,757	35,142				*22,024	*22,024	39.0 ft		
	4.5 m	kg							*34,970	*34,970	*27,870	27,010	*23,290	19,970	19,270	15,360	*12,910	12,010				*10,000	*10,000	12.2 m
	15 ft	lb							*77,096	*77,096	*61,443	59,547	*51,346	44,026	42,483	33,863	*28,462	26,477				*22,046	*22,046	40.0 ft
	3 m	kg							*36,300	35,670	*28,600	25,130	*23,580	18,880	18,610	14,720	14,870	11,720				*10,220	*10,220	12.4 m
	10 ft	lb							*80,028	78,639	*63,052	55,402	*51,985	41,623	41,028	32,452	32,783	25,838				*22,531	*22,531	40.7 ft
	1.5 m	kg							*34,430	33,290	*28,480	23,630	22,930	17,950	18,020	14,160	14,600	11,460				*10,610	*10,610	12.3 m
	5 ft	lb							*75,905	73,392	*62,788	52,095	50,552	39,573	39,727	31,217	32,187	25,265				*23,391	*23,391	40.4 ft
	0 m	kg							*33,050	32,120	*27,250	22,670	22,230	17,290	17,600	13,760	*13,370	11,320				*11,240	11,190	12.1 m
	0 ft	lb							*72,863	70,812	*60,076	49,979	49,009	38,118	38,801	30,336	*29,476	24,956				*24,780	24,670	39.7 ft
-1.5 m	kg				*17,550	*17,550	*29,750	*29,750	*24,810	22,240	*20,450	16,960	*16,460	13,590				*12,190	11,810	11.7 m				
-5 ft	lb				*38,691	*38,691	*65,587	*65,587	*54,697	49,031	*45,084	37,390	*36,288	29,961				*26,874	26,037	38.4 ft				
-3 m	kg				*26,470	*26,470	*24,610	*24,610	*21,040	*21,040	*17,240	16,980	*12,910	*12,910				*10,420	*10,420	11.0 m				
-10 ft	lb				*58,356	*58,356	*54,256	*54,256	*46,385	*46,385	*38,008	37,434	*28,462	*28,462				*22,972	*22,972	36.1 ft				
-4.5 m	kg								*15,580	*15,580	*12,110	*12,110								10.1 m				
-15 ft	lb								*34,348	*34,348	*26,698	*26,698								33.1 ft				

Notes: 1. The above loads are in compliance with SAE and ISO Hydraulic Excavator Lift Capacity Standards. 2. They do not exceed 87% of hydraulic lifting capacity or 75% of tipping load. 3. Rated loads marked with an asterisk (*) are limited by hydraulic capacity rather than tipping load.

LIFTING CAPACITY EC750EHR

At the arm end without bucket. For lifting capacity including bucket, simply subtract actual weight of the direct fit bucket or the bucket with quick fit from the following values.

	Lifting hook related to ground level	3.0 m, 10 ft		4.5 m, 15 ft		6.0 m, 20 ft		7.5 m, 25 ft		9.0 m, 30 ft		10.5 m, 35 ft		12.0 m, 40 ft		Max. reach			
		Along UC	Across UC	Along UC	Across UC	Along UC	Across UC	Along UC	Across UC	Along UC	Across UC	Along UC	Across UC	Along UC	Across UC	Along UC	Across UC	Max.	
Boom 7.7 m (25'3") Arm 4.2 m (13'9") Shoe 750 mm (30") Hyd. Removal CWT 12,816 kg (28,254 lb)	10.5 m	kg															*11,030	*11,030	8.3 m
	35 ft	lb															*24,317	*24,317	27.2 ft
	9 m	kg								*13,480	*13,480						*10,330	*10,330	9.5 m
	30 ft	lb								*29,718	*29,718						*22,774	*22,774	31.2 ft
	7.5 m	kg								*16,280	*16,280						*10,030	*10,030	10.4 m
	25 ft	lb								*35,891	*35,891						*22,112	*22,112	34.1 ft
	6 m	kg							*21,010	*21,010	*18,880	*18,880	*13,860	*13,860			*10,000	*10,000	11.0 m
	20 ft	lb							*46,319	*46,319	*41,623	*41,623	*30,556	*30,556			*22,046	*22,046	36.1 ft
	4.5 m	kg			*40,660	*40,660	*30,390	*30,390	*24,910	*24,910	*21,510	*21,510	*16,830	16,340			*10,180	*10,180	11.3 m
	15 ft	lb			*89,640	*89,640	*66,998	*66,998	*54,917	*54,917	*47,421	*47,421	*37,104	36,023			*22,443	*22,443	37.1 ft
	3 m	kg					*33,680	*33,680	*26,770	*26,770	*22,550	20,340	19,600	15,680			*10,600	*10,600	11.5 m
	10 ft	lb					*74,252	*74,252	*59,018	*59,018	*49,714	44,842	43,211	34,568			*23,369	*23,369	37.7 ft
	1.5 m	kg					*35,820	*35,820	*28,140	25,550	*23,330	19,250	18,920	15,020			*11,280	*11,280	11.5 m
	5 ft	lb					*78,969	*78,969	*62,038	56,328	*51,434	42,439	41,711	33,113			*24,868	*24,868	37.7 ft
	0 m	kg			*23,020	*23,020	*36,370	34,250	*28,680	24,200	23,370	18,370	18,360	14,490			*12,320	*12,320	11.2 m
	0 ft	lb			*50,750	*50,750	*80,182	75,508	*63,229	53,352	51,522	40,499	40,477	31,945			*27,161	*27,161	36.7 ft
	-1.5 m	kg	*17,320	*17,320	*30,250	*30,250	*35,370	33,230	*28,190	23,370	22,760	17,790	18,030	14,170			*13,900	13,680	10.8 m
	-5 ft	lb	*38,184	*38,184	*66,690	*66,690	*77,977	73,260	*62,148	51,522	50,177	39,220	39,749	31,239			*30,644	30,159	35.4 ft
	-3 m	kg	*26,390	*26,390	*40,850	*40,850	*32,840	*32,840	*26,420	23,040	*21,360	17,580					*16,470	15,050	10.1 m
	-10 ft	lb	*58,180	*58,180	*90,059	*90,059	*72,400	*72,400	*58,246	50,794	*47,091	38,757					*36,310	33,180	33.1 ft
-4.5 m	kg	*37,440	*37,440	*35,150	*35,150	*28,460	*28,460	*22,860	*22,860	*17,340						*17,070	*17,070	9.1 m	
-15 ft	lb	*82,541	*82,541	*77,492	*77,492	*62,743	*62,743	*50,398	*50,398	*38,228	*38,228					*37,633	*37,633	29.9 ft	
-6 m	kg					*21,180	*21,180	*15,700	*15,700									7.6 m	
-20 ft	lb					*46,694	*46,694	*34,613	*34,613									24.9 ft	
Boom 8.3 m (27'3") Arm 4.2 m (13'9") Shoe 750 mm (30") Hyd. Removal CWT 12,816 kg (28,254 lb)	13.5 m	kg														*16,030	*16,030	5.7 m	
	45 ft	lb														*35,340	*35,340	18.7 ft	
	12 m	kg							*15,460	*15,460						*12,820	*12,820	8.0 m	
	40 ft	lb							*34,083	*34,083						*28,263	*28,263	26.2 ft	
	10.5 m	kg							*16,230	*16,230	*14,450	*14,450				*11,370	*11,370	9.5 m	
	35 ft	lb							*35,781	*35,781	*31,857	*31,857				*25,067	*25,067	31.2 ft	
	9 m	kg							*16,080	*16,080	*16,170	*16,170	*11,340	*11,340			*10,590	*10,590	10.6 m
	30 ft	lb							*35,450	*35,450	*35,649	*35,649	*25,000	*25,000			*23,347	*23,347	34.8 ft
	7.5 m	kg					*15,940	*15,940	*17,110	*17,110	*17,300	*17,300	*15,450	*15,450			*10,180	*10,180	11.3 m
	25 ft	lb					*35,142	*35,142	*37,721	*37,721	*38,140	*38,140	*34,061	*34,061			*22,443	*22,443	37.1 ft
	6 m	kg					*22,910	*22,910	*21,010	*21,010	*19,700	*19,700	*17,580	15,940			*9,990	*9,990	11.9 m
	20 ft	lb					*50,508	*50,508	*46,319	*46,319	*43,431	*43,431	*38,757	35,142			*22,024	*22,024	39.0 ft
	4.5 m	kg					*34,970	*34,970	*27,870	27,010	*23,290	19,970	19,270	15,360	*12,910	12,010	*10,000	*10,000	12.2 m
	15 ft	lb					*77,096	*77,096	*61,443	59,547	*51,346	44,026	42,483	33,863	*28,462	26,477	*22,046	*22,046	40.0 ft
	3 m	kg					*36,300	35,670	*28,600	25,130	*23,580	18,880	18,610	14,720	14,870	11,720	*10,220	*10,220	12.4 m
	10 ft	lb					*80,028	78,639	*63,052	55,402	*51,985	41,623	41,028	32,452	32,783	25,838	*22,531	*22,531	40.7 ft
	1.5 m	kg					*34,430	33,290	*28,480	23,630	22,930	17,950	18,020	14,160	14,600	11,460	*10,610	*10,610	12.3 m
	5 ft	lb					*75,905	73,392	*62,788	52,095	50,552	39,573	39,727	31,217	32,187	25,265	*23,391	*23,391	40.4 ft
	0 m	kg					*33,050	32,120	*27,250	22,670	22,230	17,290	17,600	13,760	*13,370	11,320	*11,240	11,190	12.1 m
	0 ft	lb					*72,863	70,812	*60,076	49,979	49,009	38,118	38,801	30,336	*29,476	24,956	*24,780	24,670	39.7 ft
-1.5 m	kg			*17,550	*17,550	*29,750	*29,750	*24,810	22,240	*20,450	16,960	16,460	13,590			*12,190	11,810	11.7 m	
-5 ft	lb			*38,691	*38,691	*65,587	*65,587	*54,697	49,031	*45,084	37,390	*36,288	29,961			*26,874	26,037	38.4 ft	
-3 m	kg			*26,470	*26,470	*24,610	*24,610	*21,040	*21,040	*17,240	16,980	*12,910	*12,910			*10,420	*10,420	11.0 m	
-10 ft	lb			*58,356	*58,356	*54,256	*54,256	*46,385	*46,385	*38,008	37,434	*28,462	*28,462			*22,972	*22,972	36.1 ft	
-4.5 m	kg							*15,580	*15,580	*12,110	*12,110							10.1 m	
-15 ft	lb							*34,348	*34,348	*26,698	*26,698							33.1 ft	

Notes: 1. The above loads are in compliance with SAE and ISO Hydraulic Excavator Lift Capacity Standards. 2. They do not exceed 87% of hydraulic lifting capacity or 75% of tipping load. 3. Rated loads marked with an asterisk (*) are limited by hydraulic capacity rather than tipping load.

Specifications

LIFTING CAPACITY EC750EHR

At the arm end without bucket. For lifting capacity including bucket, simply subtract actual weight of the direct fit bucket or the bucket with quick fit from the following values.

	Lifting hook related to ground level	3.0 m, 10 ft		4.5 m, 15 ft		6.0 m, 20 ft		7.5 m, 25 ft		9.0 m, 30 ft		10.5 m, 35 ft		12.0 m, 40 ft		Max. reach						
		Along UC	Across UC	Along UC	Across UC	Along UC	Across UC	Along UC	Across UC	Along UC	Across UC	Along UC	Across UC	Along UC	Across UC	Along UC	Across UC	Max.				
Boom 7.7 m (25'3") Arm 4.2 m (13'9") Shoe 650 mm (26") Hyd. Removal CWT 12,816 kg (28,254 lb)	10.5 m	kg															*11,030	*11,030	8.3 m			
	35 ft	lb															*24,317	*24,317	27.2 ft			
	9 m	kg								*13,480	*13,480						*10,330	*10,330	9.5 m			
	30 ft	lb								*29,718	*29,718						*22,774	*22,774	31.2 ft			
	7.5 m	kg								*16,280	*16,280						*10,030	*10,030	10.4 m			
	25 ft	lb								*35,891	*35,891						*22,112	*22,112	34.1 ft			
	6 m	kg							*21,010	*21,010	*18,880	*18,880	*13,860	*13,860				*10,000	*10,000	11.0 m		
	20 ft	lb							*46,319	*46,319	*41,623	*41,623	*30,556	*30,556				*22,046	*22,046	36.1 ft		
	4.5 m	kg			*40,660	*40,660	*30,390	*30,390	*24,910	*24,910	*21,510	21,310	*16,830	16,180				*10,180	*10,180	11.3 m		
	15 ft	lb			*89,640	*89,640	*66,998	*66,998	*54,917	*54,917	*47,421	46,980	*37,104	35,671				*22,443	*22,443	37.1 ft		
	3 m	kg					*33,680	*33,680	*26,770	*26,770	*22,550	20,150	19,400	15,520				*10,600	*10,600	11.5 m		
	10 ft	lb					*74,252	*74,252	*59,018	*59,018	*49,714	44,423	42,770	34,216				*23,369	*23,369	37.7 ft		
	1.5 m	kg					*35,820	*35,820	*28,140	25,300	*23,330	19,050	18,720	14,860				*11,280	*11,280	11.5 m		
	5 ft	lb					*78,969	*78,969	*62,038	55,777	*51,434	41,998	41,270	32,761				*24,868	*24,868	37.7 ft		
	0 m	kg			*23,020	*23,020	*36,370	33,900	*28,680	23,950	23,120	18,170	18,160	14,330				*12,320	*12,320	11.2 m		
	0 ft	lb			*50,750	*50,750	*80,182	74,737	*63,229	52,801	50,971	40,058	40,036	31,592				*27,161	*27,161	36.7 ft		
	-1.5 m	kg	*17,320	*17,320	*30,250	*30,250	*35,370	32,880	*28,190	23,120	22,510	17,590	17,840	14,010				*13,900	13,530	10.8 m		
	-5 ft	lb	*38,184	*38,184	*66,690	*66,690	*77,977	72,488	*62,148	50,971	49,626	38,779	39,330	30,887				*30,644	29,829	35.4 ft		
	-3 m	kg	*26,390	*26,390	*40,850	*40,850	*32,840	32,580	*26,420	22,790	*21,360	17,380						*16,470	14,880	10.1 m		
	-10 ft	lb	*58,180	*58,180	*90,059	*90,059	*72,400	71,827	*58,246	50,243	*47,091	38,316						*36,310	32,805	33.1 ft		
-4.5 m	kg	*37,440	*37,440	*35,150	*35,150	*28,460	*28,460	*22,860	*22,860	*17,340	*17,340						*17,070	*17,070	9.1 m			
-15 ft	lb	*82,541	*82,541	*77,492	*77,492	*62,743	*62,743	*50,398	*50,398	*38,228	*38,228						*37,633	*37,633	29.9 ft			
-6 m	kg					*21,180	*21,180	*15,700	*15,700										7.6 m			
-20 ft	lb					*46,694	*46,694	*34,613	*34,613										24.9 ft			
Boom 8.3 m (27'3") Arm 4.2 m (13'9") Shoe 650 mm (26") Hyd. Removal CWT 12,816 kg (28,254 lb)	13.5 m	kg															*16,030	*16,030	5.7 m			
	45 ft	lb															*35,340	*35,340	18.7 ft			
	12 m	kg							*15,460	*15,460							*12,820	*12,820	8.0 m			
	40 ft	lb							*34,083	*34,083							*28,263	*28,263	26.2 ft			
	10.5 m	kg							*16,230	*16,230	*14,450	*14,450					*11,370	*11,370	9.5 m			
	35 ft	lb							*35,781	*35,781	*31,857	*31,857					*25,067	*25,067	31.2 ft			
	9 m	kg							*16,080	*16,080	*16,170	*16,170	*11,340	*11,340				*10,590	*10,590	10.6 m		
	30 ft	lb							*35,450	*35,450	*35,649	*35,649	*25,000	*25,000				*23,347	*23,347	34.8 ft		
	7.5 m	kg					*15,940	*15,940	*17,110	*17,110	*17,300	*17,300	*15,450	*15,450				*10,180	*10,180	11.3 m		
	25 ft	lb					*35,142	*35,142	*37,721	*37,721	*38,140	*38,140	*34,061	*34,061				*22,443	*22,443	37.1 ft		
	6 m	kg					*22,910	*22,910	*21,010	*21,010	*19,700	*19,700	*17,580	15,780				*9,990	*9,990	11.9 m		
	20 ft	lb					*50,508	*50,508	*46,319	*46,319	*43,431	*43,431	*38,757	34,789				*22,024	*22,024	39.0 ft		
	4.5 m	kg					*34,970	*34,970	*27,870	26,750	*23,290	19,780	19,070	15,200	*12,910	11,870				*10,000	*10,000	12.2 m
	15 ft	lb					*77,096	*77,096	*61,443	58,974	*51,346	43,607	42,042	33,510	*28,462	26,169				*22,046	*22,046	40.0 ft
	3 m	kg					*36,300	35,320	*28,600	24,880	*23,580	18,690	18,410	14,560	14,710	11,590				*10,220	*10,220	12.4 m
	10 ft	lb					*80,028	77,867	*63,052	54,851	*51,985	41,204	40,587	32,099	32,430	25,552				*22,531	*22,531	40.7 ft
	1.5 m	kg					*34,430	32,940	*28,480	23,380	22,680	17,750	17,820	14,000	14,430	11,320				*10,610	*10,610	12.3 m
	5 ft	lb					*75,905	72,620	*62,788	51,544	50,001	39,132	39,286	30,865	31,813	24,956				*23,391	*23,391	40.4 ft
	0 m	kg					*33,050	31,770	*27,250	22,420	21,990	17,090	17,410	13,600	*13,370	11,190				*11,240	11,050	12.1 m
	0 ft	lb					*72,863	70,041	*60,076	49,428	48,480	37,677	38,382	29,983	*29,476	24,670				*24,780	24,361	39.7 ft
-1.5 m	kg			*17,550	*17,550	*29,750	*29,750	*24,810	21,990	*20,450	16,760	*16,460	13,440				*12,190	11,670	11.7 m			
-5 ft	lb			*38,691	*38,691	*65,587	*65,587	*54,697	48,480	*45,084	36,949	*36,288	29,630				*26,874	25,728	38.4 ft			
-3 m	kg			*26,470	*26,470	*24,610	*24,610	*21,040	*21,040	*17,240	16,790	*12,910	*12,910				*10,420	*10,420	11.0 m			
-10 ft	lb			*58,356	*58,356	*54,256	*54,256	*46,385	*46,385	*38,008	37,016	*28,462	*28,462				*22,972	*22,972	36.1 ft			
-4.5 m	kg							*15,580	*15,580	*12,110	*12,110								10.1 m			
-15 ft	lb							*34,348	*34,348	*26,698	*26,698								33.1 ft			

Notes: 1. The above loads are in compliance with SAE and ISO Hydraulic Excavator Lift Capacity Standards. 2. They do not exceed 87% of hydraulic lifting capacity or 75% of tipping load. 3. Rated loads marked with an asterisk (*) are limited by hydraulic capacity rather than tipping load.

LIFTING CAPACITY EC750EHR

At the arm end without bucket. For lifting capacity including bucket, simply subtract actual weight of the direct fit bucket or the bucket with quick fit from the following values.

With Boom extension	Lifting hook related to ground level	4.5 m, 15 ft		6.0 m, 20 ft		7.5 m, 25 ft		9.0 m, 30 ft		10.5 m, 35 ft		12.0 m, 40 ft		13.5 m, 45 ft		15.0 m, 50 ft		16.5 m, 55 ft		Max. reach					
		Along UC	Across UC	Along UC	Across UC	Along UC	Across UC	Along UC	Across UC	Along UC	Across UC	Along UC	Across UC	Along UC	Across UC	Along UC	Across UC	Along UC	Across UC	Along UC	Across UC	Max.			
Bent & Straight boom	13.5 m	kg																				*10,790	*10,790	11.5 m	
	45 ft	lb																					*23,788	*23,788	37.7 ft
	12 m	kg																					*10,320	*10,320	12.7 m
	40 ft	lb																					*22,752	*22,752	41.7 ft
	10.5 m	kg																							
	35 ft	lb																							
	9 m	kg																							
	30 ft	lb																							
	7.5 m	kg																							
	25 ft	lb																							
	6 m	kg																							
	20 ft	lb																							
	4.5 m	kg																							
	15 ft	lb																							
	3 m	kg																							
	10 ft	lb																							
	1.5 m	kg																							
	5 ft	lb																							
	0 m	kg																							
	0 ft	lb																							
	Removal CWT	-1.5 m	kg																						
		-5 ft	lb																						
		-3 m	kg																						
		-10 ft	lb																						
		-4.5 m	kg																						
-15 ft		lb																							
-6 m		kg																							
-20 ft		lb																							
-7.5 m		kg																							
-25 ft		lb																							
Straight & Bent boom		15 m	kg																						
		50 ft	lb																						
		13.5 m	kg																						
		45 ft	lb																						
		12 m	kg																						
		40 ft	lb																						
	10.5 m	kg																							
	35 ft	lb																							
	11.9 m	kg																							
	39 ft	lb																							
	7.5 m	kg																							
	25 ft	lb																							
	4.2 m	kg																							
	13.9 m	kg																							
	20 ft	lb																							
	4.5 m	kg																							
15 ft	lb																								
3 m	kg																								
10 ft	lb																								
1.5 m	kg																								
5 ft	lb																								
0 m	kg																								
0 ft	lb																								
Removal CWT	-1.5 m	kg																							
	-5 ft	lb																							
	-3 m	kg																							
	-10 ft	lb																							
	-4.5 m	kg																							
	-15 ft	lb																							
	-6 m	kg																							
	-20 ft	lb																							
	Straight & Straight boom	18 m	kg																						
		60 ft	lb																						
		16.5 m	kg																						
		55 ft	lb																						
		15 m	kg																						
		50 ft	lb																						
		13.5 m	kg																						
		45 ft	lb																						
12 m		kg																							
40 ft		lb																							
10.5 m		kg																							
35 ft		lb																							
12.7 m		kg																							
41.8 m		kg																							
9 m		kg																							
30 ft		lb																							
4.2 m	kg																								
7.5 m	kg																								
25 ft	lb																								
6 m	kg																								
20 ft	lb																								
4.5 m	kg																								
15 ft	lb																								
3 m	kg																								
10 ft	lb																								
1.5 m	kg																								
5 ft	lb																								
0 m	kg																								
0 ft	lb																								
Removal CWT	-1.5 m	kg																							
	-5 ft	lb																							
	-3 m	kg																							
	-10 ft	lb																							
	-4.5 m	kg																							
	-15 ft	lb																							

Notes: 1. The above loads are in compliance with SAE and ISO Hydraulic Excavator Lift Capacity Standards. 2. They do not exceed 87% of hydraulic lifting capacity or 75% of tipping load. 3. Rated loads marked with an asterisk (*) are limited by hydraulic capacity rather than tipping load.

Equipment

STANDARD EQUIPMENT

Engine

Turbocharged, 4 stroke diesel engine with water cooling, direct injection and charged air cooler that meets Tier4f/EU Stage IV requirements.

Air intake heater

Fuel filter and water separator

Fuel filler pump: 50 l/min (13.2 gal/min), with automatic shut-off

Alternator, 80 A

Precleaner, Cyclone

Electric/Electronic control system

Contronics

Advanced mode control system

Self-diagnostic system

Machine status indication

Engine speed sensing power control

Automatic idling system

One-touch power boost

Safety stop/start function

Adjustable two LCD color monitors

Master electrical disconnect switch

Engine restart prevention circuit

High-capacity halogen lights(Optional selection to LED):

Frame-mounted 2

Boom-mounted 4

Batteries, 2 x 12 V / 200 Ah

Start motor, 24 V / 7 kW

CareTrack

Engine emergency stop switch

Overload Warning (TMI & Slew limitation)

Front camera for demolition

Rear view camera on counterweight

Cleaning air gun

Dust suppression system

Hydraulic system

Hose rupture valve for UHR:

boom cylinder and arm

Hydraulic piping:

Hammer & shear:

Two pump flow

Slope & rotator

Oil leak (drain) line

Quick fit piping

Additional return filter

Overload warning device

Automatic sensing hydraulic system

Summation system

Boom priority

Arm priority

Swing priority

Boom and arm regeneration valves

Slew anti-rebound valves

Boom and arm holding valves

Multi-stage filtering system

Cylinder cushioning

Cylinder contamination seals

Auxiliary hydraulic valve

Automatic two-speed travel motors

Hydraulic oil, ISO VG 46

STANDARD EQUIPMENT

Superstructure

Full height counterweight: 11,200 kg (24,692 lb)

Additional counterweight for high reach: 4,186 kg (9,229 lb) (EC750EHR hyd removable CWT)

HD undercover plate (8 mm / 0.31 in)

HD double thickness side doors with micro mesh

Access way with handrail

Punched metal anti-slip plates

Tool storage area

Undercarriage

Fixed undercarriage

Retractable undercarriage

Swing ring guard

HD Undercover plate (10 mm / 0.39 in)

Hydraulic track adjusters

Greased and sealed track link

Standard track guards

Foot support bar

Tilting cab, and interior

Tilting cab

Seat, mech. susp w/ heater, w/o X-Isolator

Control Joystick with 3 switch & 1 prop. control

Air-conditioner climate control

Silicon oil and rubber mounts with spring

Adjustable operator seat and joystick control console

AM/FM stereo with CD Player and MP3 input with bluetooth

Flexible antenna

Hydraulic safety lock lever

Cab, all-weather sound suppressed, includes:

Cup holder

Door locks

Tinted glass

Floor mat

Horn

Large storage area

Seat belt, 3 inch retractable

Safety glass(front and side)

LEXAN glass(roof)

Sun shields, front, roof, rear

Windshield wipers with intermittent feature(front and roof)

Master key

Frame mounted Falling object guard (FOG)

OPTIONAL EQUIPMENT
Engine
Block heater: 120 V, 240 V
Oil bath pre-cleaner
Diesel coolant heater ,10kW
Water separator with heater
Reversible cooling fan
Electric
Extra lights(halogen or LED):
Cab mounted x2 (front) x1 (rear)
Counterweight mounted x1
Travel alarm
Anti-theft system
Rotating warning beacon
Side view camera
Hydraulic system
Hose rupture valve for digging boom : Arm
Hydraulic piping:
Work tool management system (Up to 20 programmable memories)
Grapple for digging boom
Quick fit piping for digging boom
Straight travel pedal
Hydraulic oil, ISO VG 32, 68
Hydraulic oil, biodegradable 46
Hydraulic oil, longlife oil 32, 46, 68
Boom cylinder guard
Bucket cylinder guard
Superstructure
Side Impact Protection System
Side walk-way for tilting cab

OPTIONAL EQUIPMENT
Cab and interior
Seat, Mech. susp w/o heater, w/o X-Isolator
Seat, Air susp w/ heater, w/ X-Isolator
Pilot control pattern change
Smoker kit (ashtray & lighter)
Safety net for front window
Lower wiper with intermittent control
Specific key
Undercarriage
Hydraulically retractable undercarriage
Full track guards
Track shoes
600/700/800/900 mm (24"/28"/32"/36") triple grouser shoes
600 mm (24")double grouser shoes
650/750/900 mm (26"/30"/36") double grouser shoes
Digging equipment
Digging boom Straight 8.3 m (27'3") / Bent 7.7 m (25'3")
Arm: 4.2 m (13'9")
Boom extension 4.39 m (14'5")
Manual centralized lubrication
High reach
Boom HR-3 piece: 26 m (85.3 ft)
Boom HR-3 piece: 36 m (118.1 ft)
Additional front camera for demolition(left hand side)
Service
Spare parts
Tool kit, full scale
Tool kit, daily maintenance

Not all products are available in all markets. Under our policy of continuous improvement, we reserve the right to change specifications and design without prior notice. The illustrations do not necessarily show the standard version of the machine.

VOLVO

Volvo Construction Equipment

volvoce.com