

Volvo Construction Equipment  
Building Tomorrow



# DD128C

Volvo Double Drum Compactors 79 in 28,430 lb 148 hp





# WELCOME TO OUR WORLD

Welcome to a world of industry leading machinery. A world where imagination, hard work and technological innovation will lead the way towards developing a future which is cleaner, smarter, and more connected. A world supported by the enduring values of the Volvo Group. A world of stability, sustainability and innovation. A world which we put our customers at the heart of.

Welcome to the world of Volvo Construction Equipment – we think you're going to like it here.

## The road to success

Our range of road machinery combines the heritage of the Ingersoll Rand and ABG brands with the engineering excellence of Volvo. The result is a line-up of Volvo pavers and compactors which achieve an unrivalled level of quality, in both paving and compaction applications.

Building on our proud history, we continue to innovate our products to offer customers the best solutions for their operation. Our Compact Assist and Pave Assist products are just two examples of how we are developing intelligent solutions to ensure our machines deliver world-class performance and results long into the future.



# Solutions for you

Our industry leading machines are just the start of your relationship with Volvo. As your partner, we have developed an extensive range of additional solutions to help you improve uptime, boost productivity and reduce costs.

## Designed for your business

Structured across nine blocks, our portfolio of products and services are designed to complement your machine's performance and boost your profitability. Simply put, we offer some of the best guarantees, warranties and technological solutions in the industry today.

## There when you need us

Whether you're buying new or used, our global network of dealers and technicians offer around-the-clock support, including machine monitoring and world-class parts availability. It's the basis of everything offered by Volvo Services, so you can be confident we've got you covered right from the start.



**BUILDING TOMORROW**

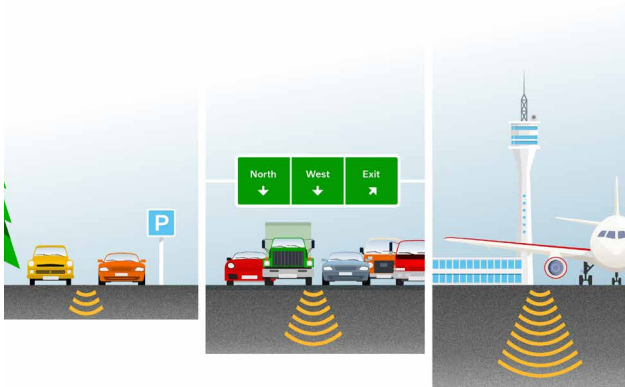


# Industry-leading performer

Introducing the DD128C double drum compactor. This 12 t machine offers outstanding versatility and performance, based on an ultra-high frequency of 4,800 vpm and drum amplitudes from a super-low 0.003", up to a high of 0.030". The compactor is designed to handle thin lift applications better than any other machine on the market but can comfortably take on traditional work as well.

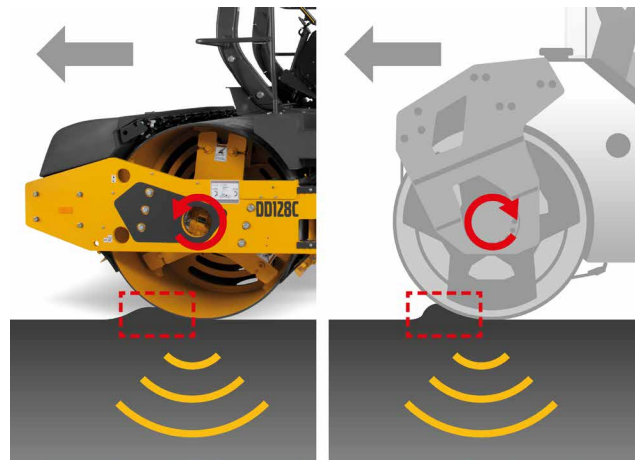
## Compact it all

The DD128C offers the widest drum amplitude range from 0.003" up to 0.030", letting you take on a wide range of applications, whether working with thick or thin layers. The compactor features 8 different amplitude settings with 5 unique frequencies; including low amplitude settings for improved productivity on ultra-thin lifts and other applications where static rolling and oscillation are used.



## Superior smoothness

The unique Volvo eight amplitude drum design enables auto-reversing eccentric rotation, which matches eccentric weight rotation with machine travel direction. The result is optimum smoothness, even with tender mixes, providing a level of control over the compaction process not possible with traditional two amplitude machines.



## Optimum water use

Optimize water use with the automatic spraying system, which provides variable flow proportional to machine speed, delivering consistent drum coverage and preventing material pick-up. The system also features a 'pre-wet' function which sprays both drums using primary and back-up spray bars for two full drum rotations (or 10 seconds). With the industry-leading fully redundant water system, operators can concentrate on rolling knowing a completely separate water system is available if needed.



## An efficient performer

Powered by the highly efficient Volvo 110 kW T4f engine, the DD128C has been designed to operate at a lower engine speed, minimizing both noise levels and fuel consumption. Fuel consumption can be further reduced by the engine's auto-idle and auto-shutdown features. Automatic regeneration requires no operator intervention.





# UNRIVALLED PRODUCTIVITY

Simply put, the DD128C is the most productive machine in its class. The ultra-high frequency of 4,800 vpm is the highest in the industry, offering the fastest possible rolling speeds while still maintaining optimum impact spacing. The patent-pending Ultra-Pac technology automatically sets the highest possible vibration frequency according to the selected amplitude, further optimizing performance and efficiency.





# BOOST PROFITABILITY

Achieve higher quality compaction, in less time and with less effort thanks to the real-time information Compact Assist provides operators. Using the 10" Volvo Co-Pilot, operators can confidently monitor the progress of their work, and eliminate under-compaction and over-compaction.

# Compact Assist

Unlock the full productivity potential of your DD128C with Compact Assist. Powered by Volvo Co-Pilot, the revolutionary in-cab 10" display, Compact Assist is a collection of functions designed to enhance the efficiency and profitability of your compactor. Functions are bundled into a range of packages, designed to make the operator's life easier and boost the success of your paving projects.

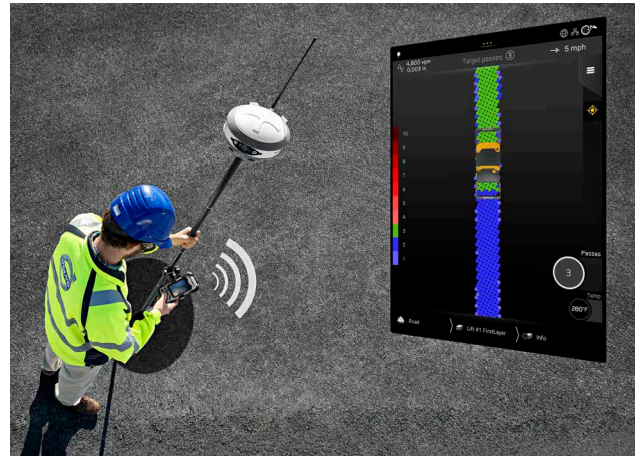
## Compact Assist Start

Includes Pass count mapping, Temperature mapping and makes it simple to upgrade to Compact Assist or Compact Assist with Density Direct in the future.



## Compact Assist

This package includes the functions from Compact Assist Start, plus high accuracy location, data recording and Real Time Kinematic (RTK) compatibility, offering millimeter-precision location accuracy.



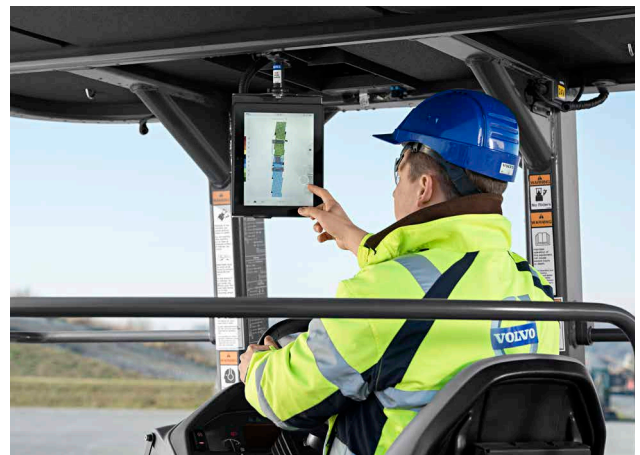
## Compact Assist with Density Direct

Includes all functions from Compact Assist package, plus compaction measurement, including Compaction Measurement Value (CMV) mapping and Density Direct mapping.



## Easy upgrades

The DD128C will come factory fitted with the necessary wiring needed to easily upgrade your machine to add Intelligent Compaction packages in the field.



Local, state, and federal requirements as well as specific job specifications vary greatly. Please verify that the selected package will meet your IC requirements.

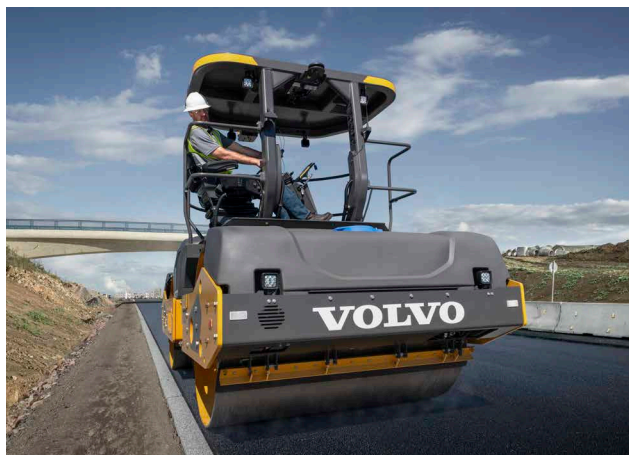


# The operator's choice

The DD128C is designed to provide operators with the highest levels of comfort and safety, helping them work to their full potential shift after shift. With easy to use controls, outstanding visibility and extensive safety features the DD128C offers the best operator environment on the market.

## Ultimate comfort

Enjoy the ultimate in operator comfort thanks to the 5-position console which rotates 180°, new fully-adjustable reclining seat, USB ports on the console and weatherproof manual storage case. Noise and vibration isolation further add to the outstanding comfort levels.



## Every angle in view

Operators benefit from unobstructed visibility all around the machine, including a clear view of the spray bars, nozzles and clear sight of the drum edges. The drum edge view is also enhanced due to the adjustable and reclining seat. The result is a confident, safer and higher quality machine operation.



## Safety first

Features including the ROPS/FOPS certified platform, seat belt alarm, operator presence switch and brake test functionality all contribute towards enhanced safety for the operator and others on the jobsite.



## See more, do more

Roll with precision day or night with a range of lighting packages available, offering increased visibility, safety and convenience. LED lights consume less power and are longer-lasting for an efficient and durable solution in low-light conditions.







# OPERATE WITH EASE

Operators will feel right at home with the intuitive and ergonomically positioned controls, including the new electronic Propulsion Control Lever. The automatic impact spacing control further enhances ease of operation. With the cruise control function operators can set a desired working speed, boosting productivity, consistency and operator comfort.





# SIMPLE TO SERVICE

When it comes to servicing, the DD128C keeps things simple, ensuring maximum uptime. The full width engine hood swings up and is held open by powerful gas springs to provide unobstructed access to all engine and hydraulic components, combined with a single access key to service hatches. Fuses and relays are grouped inside a sealed, lockable compartment for improved reliability and serviceability. Both water tanks are separately filled from ground level.



# Keep on rolling

Designing a best-in-class compactor which is durable and easy to service is just the start of how we strive to maximize uptime for our customers. Our range of Volvo Services, including Lifetime Frame and Structure Warranty, 24-hour parts delivery guarantee and proactive machine monitoring, are designed to help you get the maximum return on your investment.

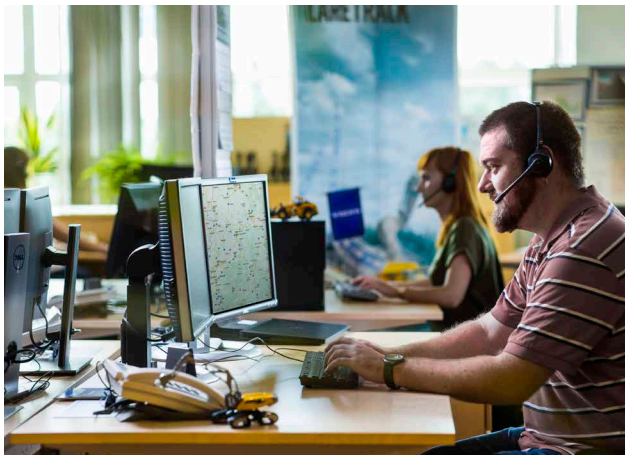
## Quality you can count on

Quality has long been a hallmark of the Volvo brand, built on decades of experience both in the field and the laboratory, which today contributes to our unrivalled frame and structure durability. Testament to the confidence we have in our products is our Lifetime Frame and Structure Warranty, which covers the frame and articulation joint.



## Machine monitoring made easy

Maximize machine uptime and reduce repair costs with the CareTrack telematic system. Choose to keep track of your machine yourself or let us take care of it with ActiveCare Direct. Our Volvo Uptime Center will provide 24/7 machine monitoring, supplying weekly reports and notifying you should preventive maintenance action be required.



## Keeping you moving

Maintain productivity and machine uptime with our range of Genuine Volvo Parts, and with a 24-hour parts delivery guarantee, you can count on getting the parts you need – when you need them. Stay on track with planned servicing and keep your asset covered with our range of flexible maintenance and repair options.





# The best in its class

## WIDEST DRUM AMPLITUDE RANGE

Whether thick or thin layers – work on a vast array of applications.

- Amplitude range of 0.003 in to 0.030 inches **A VOLVO-EXCLUSIVE**
- 8 different amplitude settings with 5 unique frequencies
- Low amplitude settings for applications where static rolling and oscillation are used

## SUPERIOR SMOOTHNESS

Optimum smoothness, even with tender mixes

- 79-inch wide drum featuring chamfered/radiused edges
- 8 amplitudes with auto-reversing eccentrics **A VOLVO-EXCLUSIVE**
- Automatic spraying system, Fully redundant water system
- Compact Assist functions/packages, powered by Volvo Co-Pilot

## KEEP ON ROLLING

A durable & easy-to-service compactor, complemented by smart Volvo Services

- Automatic passive engine regeneration
- Swing-up hood allows for easy access to engine and hydraulic components
- Water tanks can be filled from ground level
- Lifetime Frame and Structure Warranty
- ActiveCare Direct: 24/7 machine monitoring
- Genuine Volvo Parts, with a 24-hour parts delivery guarantee







## HIGHEST FREQUENCY IN THE INDUSTRY

Experience superior productivity, whatever the job.

- Frequency of 4,800 vpm **A VOLVO-EXCLUSIVE**
- Facilitates fast rolling speeds with vibration for maximum efficiency
- Ultra-Pac technology: automatic adjustment of frequency to match the selected amplitude

## HIGH COMFORT OPERATOR STATION

An ergonomic platform, combined with intuitive controls

- 5-position console, which rotates 180°
- Fully-adjustable reclining seat **NEW**
- Electronic control lever **NEW**
- Automatic impact spacing control **NEW**
- USB ports
- Low-noise and vibration

## SAFETY FIRST

For the operator and others on the jobsite

- Unobstructed visibility all around the machine
- ROPS/FOPS certified platform
- Seat belt alarm
- Operator presence switch
- Remote brake test functionality
- Lighting packages

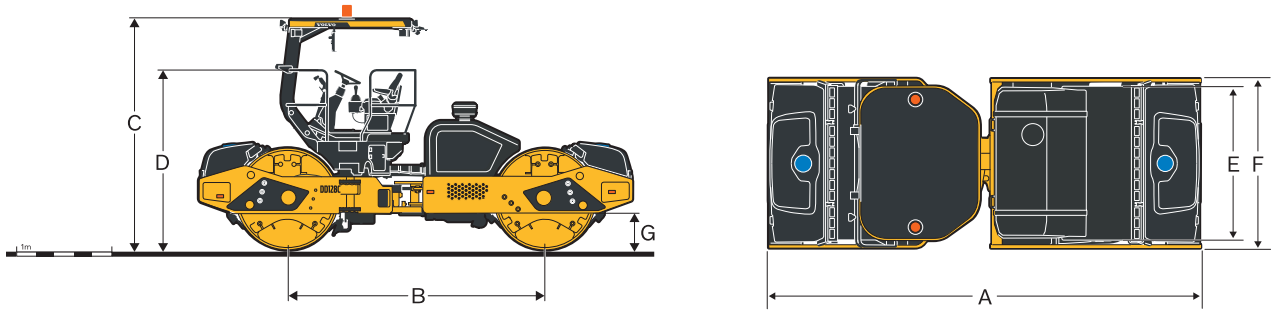
“ ”

*"The DD128C is our best compactor yet. This is the most productive, fuel-efficient, and versatile machine we offer."*

*Chad Fluent, Global Product Manager - Compactors*



# Specifications



Model			DD128C	
Machine weights				
Operating weight <sup>1</sup>	kg	lb	12,893	28,430
Weight @ front drum	kg	lb	6,846	15,095
Weight @ rear drum	kg	lb	6,047	13,335
Shipping weight <sup>2</sup>	kg	lb	12,120	26,724
Drums				
Width	mm	in	2,000	79
Diameter	mm	in	1,400	55
Shell thickness	mm	in	20	0.79
Finish	Machined surface; chamfered and radiused edges			
Propulsion				
Type	Closed-loop hydrostatic, parallel circuit to both drums			
Drum drive	2-speed axial piston motors with planetary gear drive			
Travel speed	km/h	mph	8.8-12.6	5.5-7.8
Engine				
Make / model	Volvo D4, EPA Tier 4 final			
Engine type	4 Cyl, Electronic, Turbo charged CAC, EGR, DPF, SCR			
Rated power @ 2,000 r/min	kW	hp	110	148
Electrical	24 V DC, 120 A alternator, Starter 5.5 kW, Battery 775 CCA (SAE)			
Brakes				
Service	Dynamic hydrostatic through propulsion system			
Parking secondary	Spring-applied, hydraulic release on both drum drives			
Water system				
Type	Pressure spray drum wetting system with dual water tanks			
Nozzles	Hand-serviceable spray nozzles, 10 per spray bar			
Filtration	Strainer at fill necks, primary filter at each pump, fine filter for each nozzle			
Drum wipers	Front and rear styrene wipers for each drum			
Water tank capacity	l	gal	1,280	338
Miscellaneous				
Articulation angle			+ / - 40°	+ / - 40°
Oscillation angle			+ / - 10°	+ / - 10°
Inside turning radius (to drum edge)	mm	in	3,772	149
Fuel tank capacity	l	gal	199.8	52.8
DEF tank capacity	l	gal	20	5.28
Hydraulic oil capacity	l	gal	149.9	39.6
Gradeability (theoretical)			31%	

<sup>1</sup> incl. 50% fuel, 50% water, full hyd., 75 kg / 165 lb operator

<sup>2</sup> incl. 50% fuel, no water, no operator

DIMENSIONS		
	DD128C	
	mm	in
A	5,973	235.2
B	3,550	139.8
C	3,177	125.1
D	2,479	97.6
E	2,218	87.3
F	2,000	79.0
G	505	19.9

AMPLITUDE SETTING						
	DD128C					
	Nominal amplitude		Vibration frequency		Eccentric force	
	mm	in	Hz	VPM	kN	lbf
1	0.08	0.0033	80	4,800	52.3	11,750
2	0.19	0.0074	68.3	4,100	85.7	19,270
3	0.34	0.0133	63.3	3,800	132.7	29,830
4	0.48	0.0189	53.3	3,200	133.0	29,910
5	0.60	0.0235	53.3	3,000	145.8	32,780
6	0.69	0.0271	50	3,000	167.7	37,690
7	0.74	0.0292	50	3,000	181.2	40,740
8	0.76	0.030	50	3,000	185.8	41,770



# Equipment

## STANDARD EQUIPMENT

### Engine

- Battery disconnect switch
- Fan belt protection

### Operator environment

- Open ROPS/FOPS canopy
- Operator seat w/adj back, steering wheel and main controls: rotating +/- 90°
- Propulsion control lever
- Adjustable steering wheel
- 2 charger sockets 12V
- 2 charger sockets 5V
- Anti-slip cab floor, easy to clean
- Cup holder
- Seat switch with timer delay
- 3" wide seat belt
- Seat belt alarm

### Vibration and drum system

- Auto vibration
- Selectable vibration: front, rear, both
- 8 amplitudes

### Electrics and electronics

- 4 Halogen work lights in frame (2 on each bumper)
- Permanent wetting system water level display
- Permanent fuel level display
- Information display:
  - Fluid temperatures
  - Engine speed
  - Vehicle speed
- Impact meter
- Emergency stop button

### Water system

- Two spray bars per drum

## OPTIONAL EQUIPMENT

### Electrics and electronics

- 4 LED frame lights
- 4 LED frame lights and 4 LED canopy lights
- Drum Edge, Surface, and Step Lights
- Light ready kit
- Rotating beacon
- Back up alarm
- Compact Assist Start
- Compact Assist
- Compact Assist with Density Direct
- CareTrack
- Caretrack Anti-theft
- Asphalt temperature gauge kit

### Structure

- Special paintwork
- Biodegradable hydraulic oil

### Others

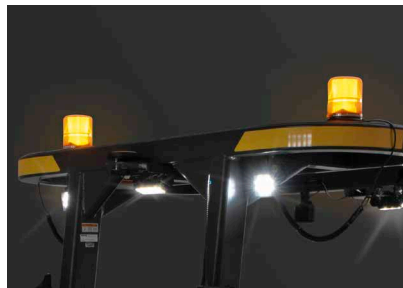
- Cocoa Mats
- Auto-idle shutdown
- Fuel Strainer
- Maintenance Package
- Metric Tool Kit
- Fire Extinguisher mounting bracket

## SELECTION OF VOLVO OPTIONAL EQUIPMENT

FOPS light ready kit



Rotating beacon



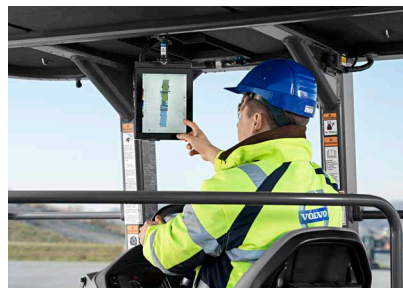
Cocoa mats



LED lighting packages



Compact Assist, powered by Volvo Co-Pilot



Winterization kit



Not all products are available in all markets. Under our policy of continuous improvement, we reserve the right to change specifications and design without prior notice. The illustrations do not necessarily show the standard version of the machine.





**Volvo Construction Equipment**  
volvoce.com