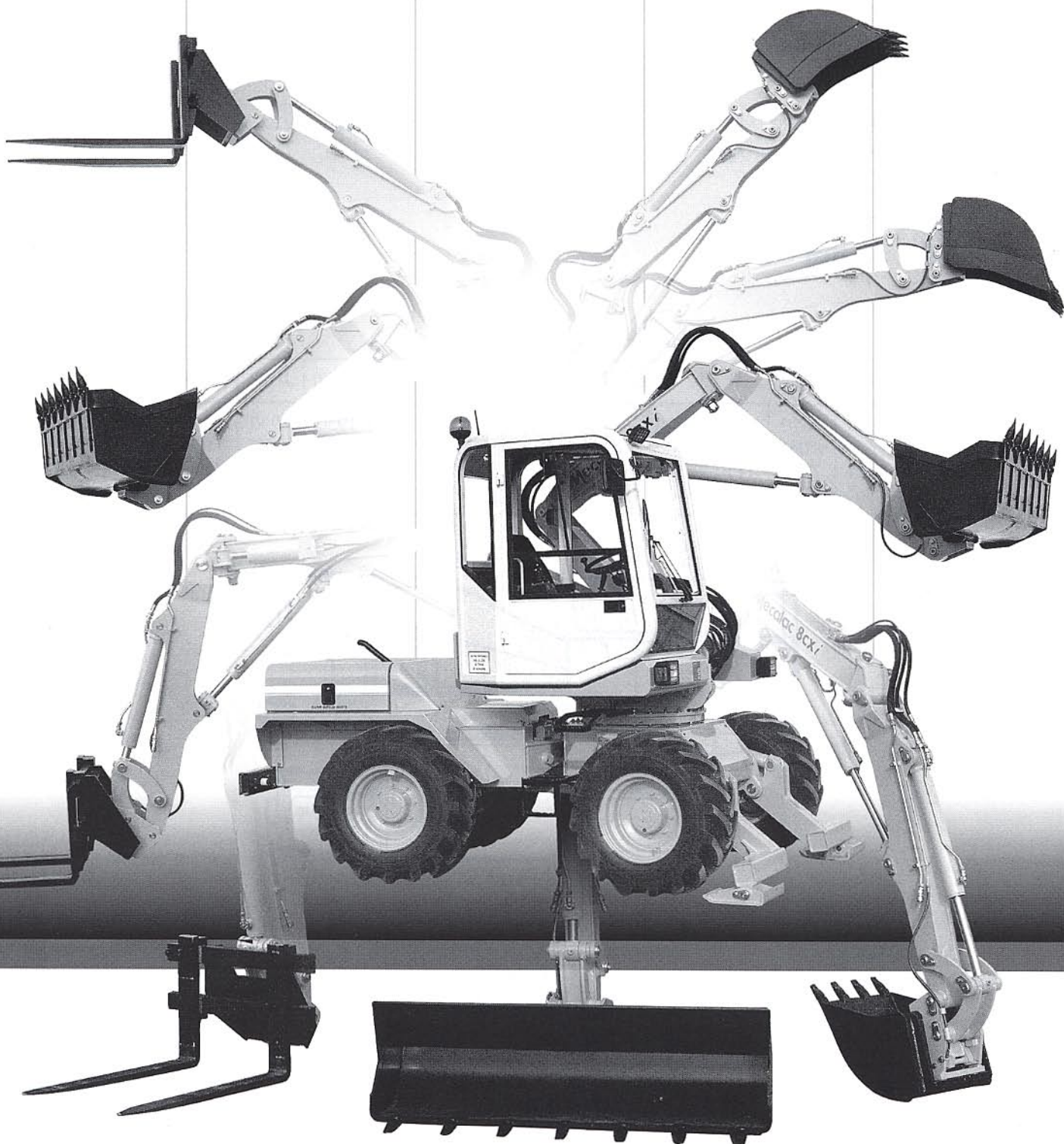
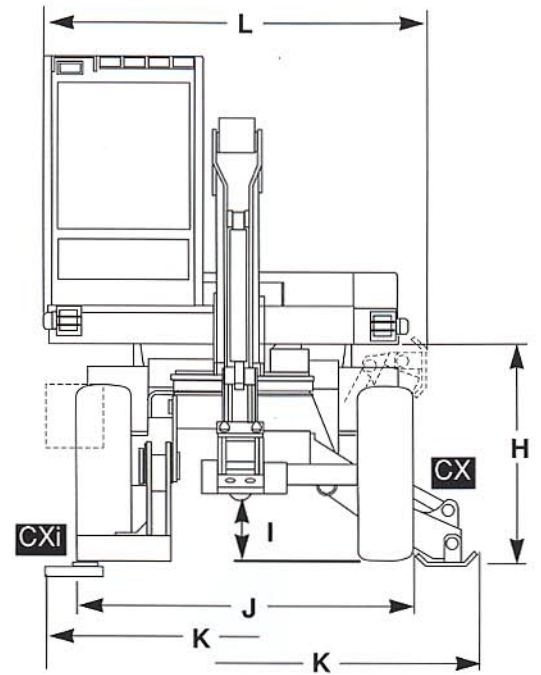
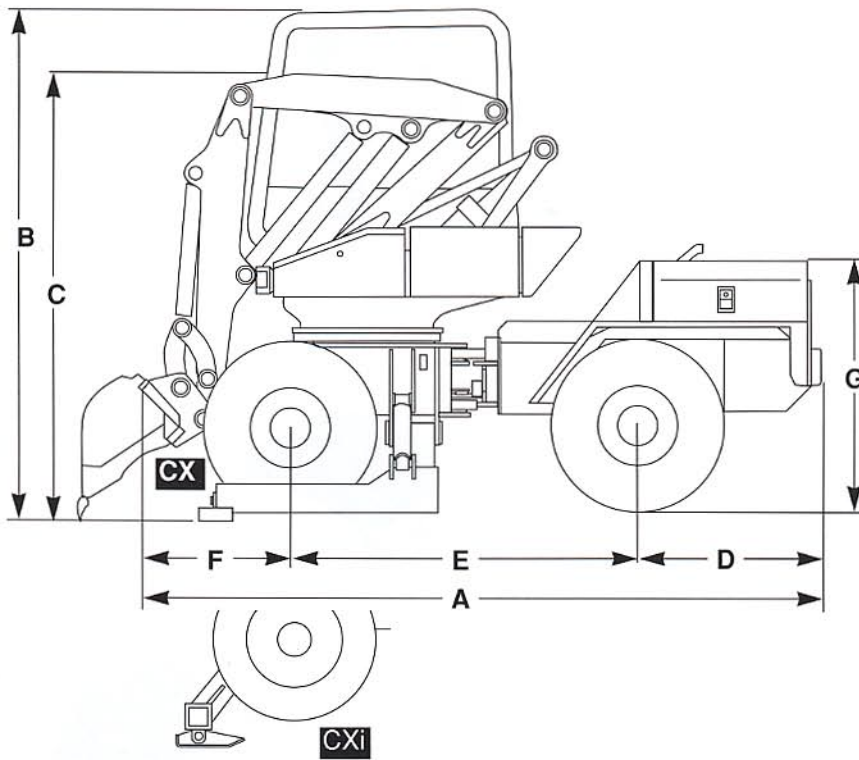


8CX · 8CX*i*



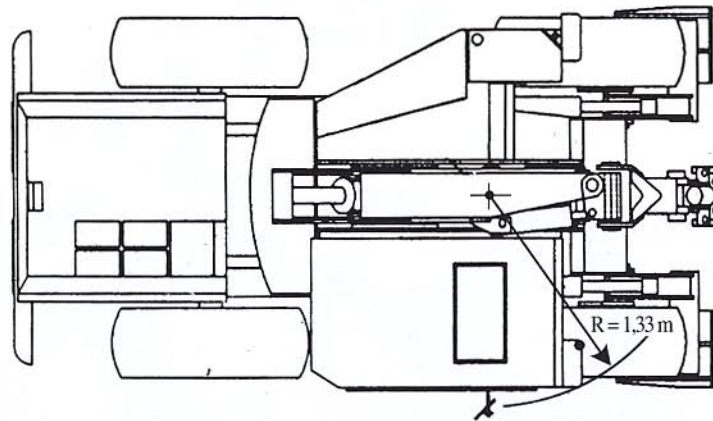
Mecalac 

OVERALL DIMENSIONS



mm / Inches

8CX - CXi	A	B	C	D	E	F	G	H	I	J(CXi)	J(CX)	k(CXi)	K(CX)	L(CXi)	L(CX)
(*) Tyres	4060 13'03"	2850 9'03"	2670 8'08"	1110 3'07"	2050 6'08"	900 2'11"	1381 4'06"	1180 3'10"	295 0'11"	1950 6'04"	1950 6'04"	2340 7'07"	2780 9'01"	2215 7'02"	2260 7'04"
(**)	4060 13'03"	2914 9'06"	2734 8'11"	1110 3'07"	2050 6'08"	900 2'11"	1445 4'08"	1206 3'11"	359 1'02"	2070 6'09"	1950 6'04"	2340 7'07"	2780 9'01"	—	—



WEIGHT

- Empty, in working order, without bucket 6260kg
13800lb
- Empty, in working order, with loading bucket 6500kg
114330lb

ENGINE

- ISUZU 4JB1 2771 cm³ 156cu.in
- Diesel, 4-cylinders, direct injection
- Water-cooled
- Diesel consumption : 7.15 l/h
- Oil capacity : 7.5 l
- Power (DIN 6271 ISO 3046/1) at 57 PS(42 KW),
at 2600 rpm

-Max. torque : 176 Nm at 1900 rpm

CHASSIS

- Articulated and oscillating by ball joints
 - horizontal displacement ±8°
 - articulation angle ±30°
 - turning radius
inside 2.80 m -11"
outside 4.90 m -17"
- Axles fixed rigidly on both chassis
- Front chassis equipped with 2 independent side stabilisers for the CX model
- Front chassis equipped with 2 independent front stabilisers for the CXi model
- Oscillation locking, standard on CXi model (optional on CX model), can be operated whatever the position of the machine on the ground; permits a

very large increase in stability, particularly during side work. In order to be unlocked, requires, as a safety measure, 2 control operations from the driver's seat.

● Tanks

- Hydraulic oil, built into the left-hand side member, capacity : 80 l.
- Diesel, built into the right-hand side member, capacity : 105 l.

● Filtration

- Hydraulic : on intake for translation ; on return for equipment ; on the "Load Sensing" system
- Diesel : filter on engine and sediment chamber

- filter
- air : dry air

REVOLVING SUPERSTRUCTURE

- full 360° slewing
- Inner toothed crown wheel drive
Swivelling by slow radial piston hydraulic motor
- Slewing speed : 8 rpm
- Hydraulic motor : 560 cm³ 34cu.in
- Max. pressure : 250 bar
- Dynamic braking

TRANSMISSION

- Hydraulic ; "automotive" type automatic control, i.e. controlled by the accelerator depending on forward resistance,
- Electric reversing mechanism on steering column without need to stop
- 2 speed ranges in both directions of travel : "site" and "road"
- "Inching" or slow approach control making it possible, at constant engine speed, to reduce the speed until the machine stops; this function is controlled by a pedal which also performs the hydrostatic braking function
- Hydraulic translation motor and pump are variable-displacement enabling the gear ratio to be varied continuously over the entire speed range
from 0 to 25 km/h
- Max. tractive effort 3900 daN 8500lb
- Max. pressure 460 bar
- Max. Flow rate 145 l/min
- Pump 56 cm³ 3.4cu.in

● Axles and wheels

- 4 driving wheels of the same size
(*fitted as standard with 12.0/18 PR12T86 tyres
(**)fitted optionally with 400 / 70-20T37 tyres
- 2 rigid driving axles fixed on the chassis
- on back axle transfer box with a single ratio giving movement directly to the back axle and to the front axle by a telescopic cardan shaft
- Simultaneous differential lock on both axles
- Negotiable incline on road : 35°
all terrain : 35°

● Brakes

- Main brakes multiple disc with oil bath incorporated in both axles
- Parking brakes multiple disc with oil bath incorporated in both axles
- Emergency brakes multiple disc with oil bath incorporated in both axles operating by lack of pressure
- Hydrostatic brake operated by the "Inching" function pedal

STEERING

- "Load Sensing" hydrostatic steering by 2 double-acting cylinders controlled by a directional control block with priority valve
- Max. pressure 175 bar
- Max. flow rate 32 l/min

EQUIPMENT

- Made up of 3 parts : boom, intermediate boom and arm
- Boom controlled by a patented cylinder and connecting rod system permitting 180° movement
- Offset
- mechanical right 22° and left 22° standard
- hydraulic optional right 30° and left 30°
- Quick-release tool connection system
- take-off with automatic mechanical locking
- hydraulic unlocking

● Power of the equipment

- Tear-out force (as backhoe) 4200 daN
- Tearout force (as loader) 3800 daN
- For lifting and handling, the "Mecalac" must be provided with safety valves (see recommendation)

HYDRAULIC CIRCUIT

● Equipment circuit

- Variable displacement piston pump 28 cm³ 1.7cu.in
- max. pressure 280 bar
- max. flow rate 73 l/min
- "Load Sensing" directional control block
- integral simultaneity of equipment slewing and movements
- progressivity of movements independent of load and flow rate
- Load- and flow rate-dependent pressure control
- pressure control depending on the highest load
- Flow rate automatically controlled according to use resulting in limitation of viscous restriction and a constant engine speed, fuel economy, reduction in sound level
- Ancillary functions controlled by solenoid valves
- independently-controlled right and left stabilisers
- differential lock
- tool unlocking
- arm-rest raising safety device
- running board (8CXi)
- brakes : parking, emergency, main, hydrostatic
- accelerator

● Slewing, steering circuit

- Independent of the other circuits ; by fixed displacement pump
- pressure 250 bar
- flow rate 32 l
- displacement 12 cm³

ELECTRICAL SYSTEM

- Battery 12 V 525 A - 115 A
- Alternator 12 V 35 Ah
- Starter 12 V 2,2 Kw

CAB

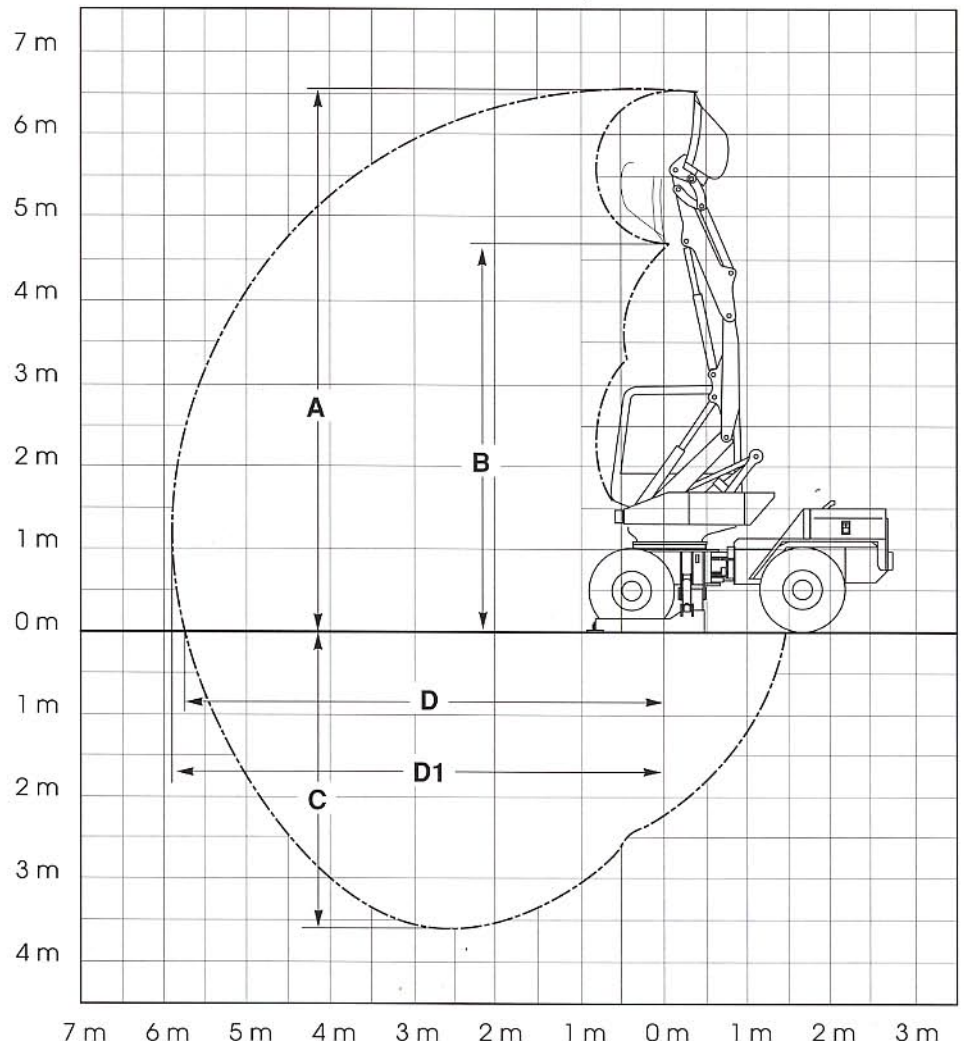
- ROPS and FOPS approved
- Safety glass providing greater visibility in all directions
- Sliding right-hand side window and windscreen
- Power-assisted controls
- Seat : position, back and hardness fully adjustable
- Heating and demisting by independent system with thermostatic temperature controls
- Ventilation in summer
- Electric fuel gauge and all the safety indicators grouped together on the ergonomic dashboard
- Hour counter visible without getting into the cab
- Main fuses easy to see and reach

● Sound proofing

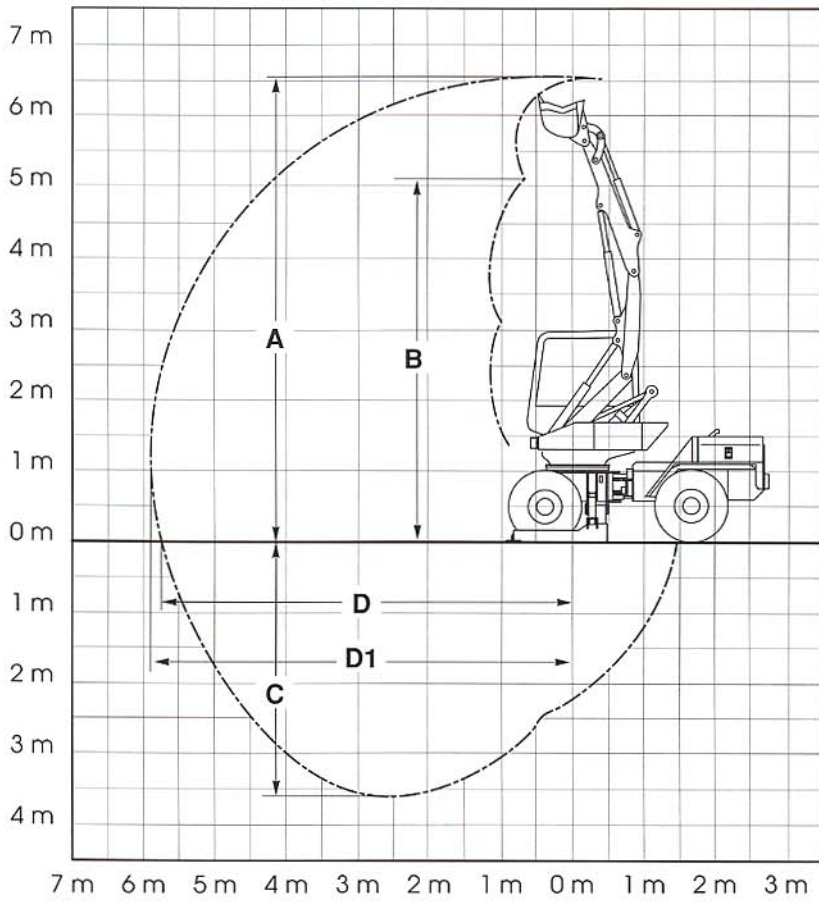
- Puissance acoustique : 102 dB (A) (outside)

BACKHOE EQUIPMENT (*)

* With DUNLOP 12.0 x 18 T 86 tyres



mm /inches	A	B	C	D	D1
8 CX / 8CXi	6690 -21'10"	4820-15'09"	3650-11'11"	5760-18'10"	5960-19'05"



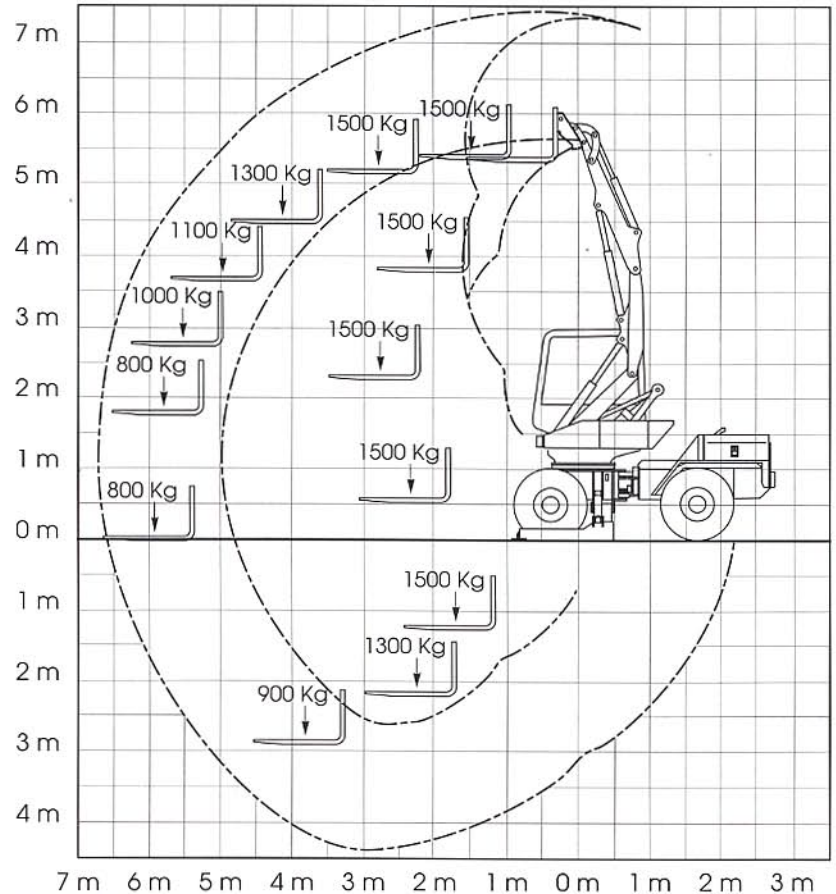
LOADER EQUIPMENT (*)

* With DUNLOP 12.0 x 18 T 86 tyres

mm-inches	A	B	C	D	D1
8 CX / 8CXi	6680 21'10"	5200 17'	3640 11'10"	5750 18'09"	5950 19'05"

HANDLING EQUIPMENT (*)

* With DUNLOP 12.0 x 18 T 86 tyres



Mecalac

Machines designed and manufactured in France

With a view to permanently improving their machines, Mecalac reserve the right to modify the specifications without prior notice

PAE LES GLAISINS BP 230
74942 ANNECY-LE VIEUX
CEDEX FRANCE
Tél. 50 64 01 63
Télex 385 254 F
Téléfax 50 64 02 79

Groupe Pel-Job