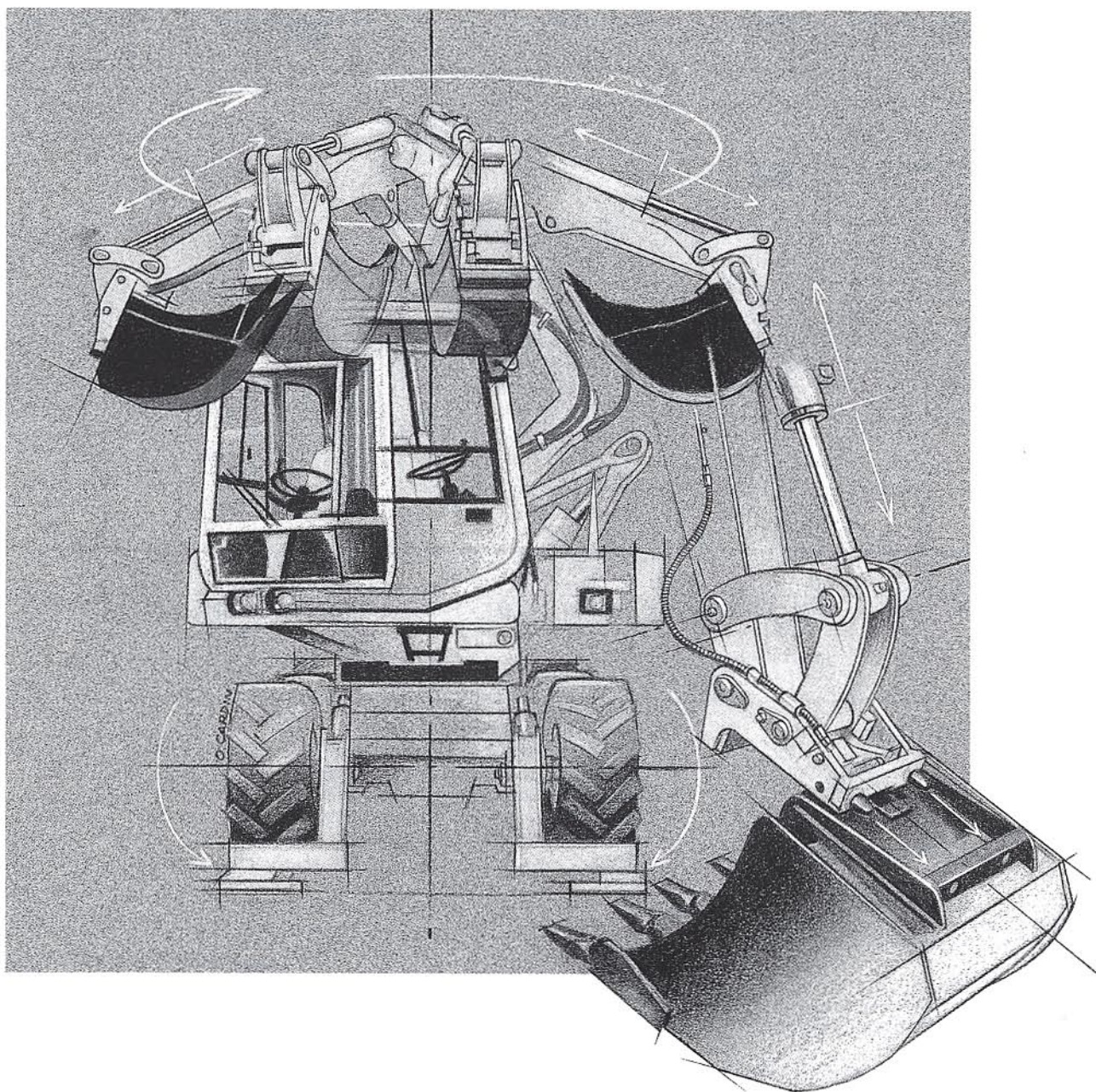
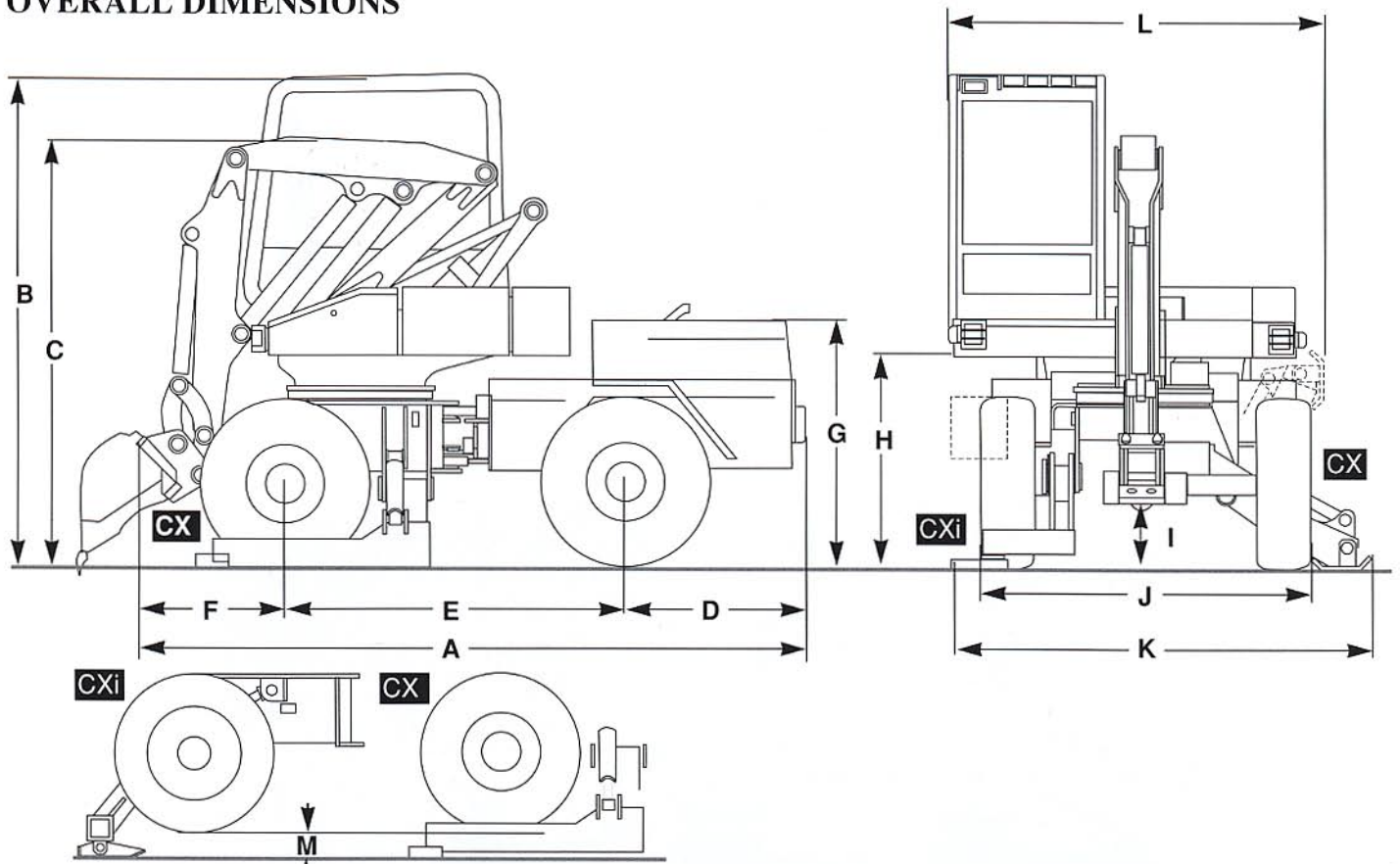


11CX • 11CX*i*

TECHNICAL DATA



OVERALL DIMENSIONS



11CXi(mm)	A	B	C	D	E	F	G	H	I	J	K	L	M
(*) Tyres (**)	4150	2974	2750	1100	2150	900	1750	1303	400	2154	2480	2225	163
(**)	-	2984	2760	-	-	-	1760	1313	410	2175	-	-	153
(***)	-	2989	2765	-	-	-	1775	1318	415	2254	-	-	148

11CX(mm)	A	B	C	D	E	F	G	H	I	J	K	L	M
(*) Tyres (**)	4150	2974	2750	1100	2150	900	1750	1303	400	2064	3100	2270	196
(**)	-	2984	2760	-	-	-	1760	1313	410	2085	-	-	186

WEIGHT

	11CX	11CXi
● Empty, in working order, without bucket	7870 kg 17377 lb	7630 kg 16847 lb
● Empty, in working order, with loading bucket	8200 kg 18106 lb	7960 kg 17576 lb

ENGINE

- DEUTZ F4L913 4058 cm³ 247.58 cu.in
- Diesel, 4-cylinders, direct injection
- Air-cooled
- Diesel consumption : 6~7 l/h
- Oil capacity : 11 litres engine, 1 litre "AIR filter"
- Power (DIN 6271 ISO 3046/1) : 76 HP (56 KW 2300 rpm
- Max. torque : 245 Nm at 1600 rpm

CHASSIS

- Articulated and oscillating
 - horizontal displacement ±8°
 - articulation angle ±33°
 - turning radius inside 2.56 m 8' 04"
 - outside 4.75 m 15' 06"
- Axles fixed rigidly on both chassis
- Front chassis equipped with 2 independent side stabilisers for the CX model
- Front chassis equipped with 2 independent front stabilisers for the CXi model

- Oscillation locking, standard on CXi model (optional on CX model), can be operated whatever the position of the machine on the ground; permits a very large increase in stability, particularly during side work. In order to be unlocked, requires, as a safety measure, 2 control operations from the driver's seat.

● Tanks

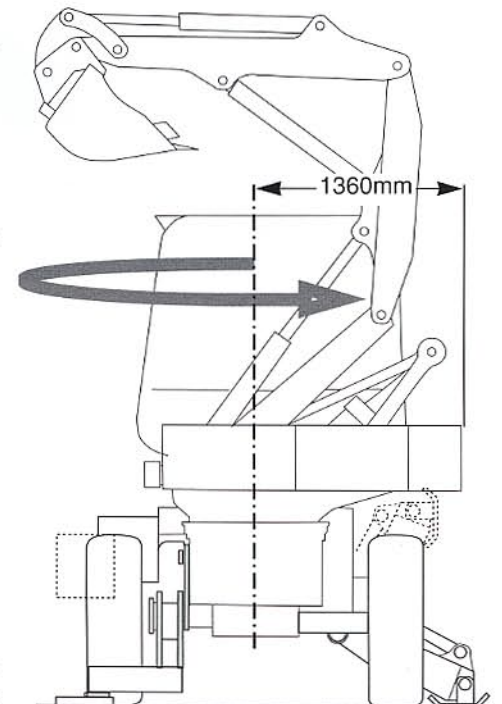
- Hydraulic oil, built into the left-hand side member, capacity : 80 l.
- Diesel, built into the right-hand side member, capacity : 110 l.

● Filtration

- Hydraulic :
 - Booster pump for translation (10 µ)
 - Return for equipment
- Diesel : Filter on engine
- Air : Oil bath filter

REVOLVING SUPERSTRUCTURE

- Full 360° slewing
- Crown wheel drive
- Swivelling by hydraulic gear motor (negative brake)
- Slewing speed : 8 rpm
- Hydraulic motor : 16 cm³ 0.97 cu.in



- Max. pressure : 400 bars
- Dynamic braking

TRANSMISSION

- Hydraulic ; "automotive" type automatic control, i.e. controlled by the accelerator depending on forward resistance,
- Electric reversing mechanism on steering column without need to stop
- 2 speed ranges in both directions of travel : "site" and "road"
- "Inching" or slow approach control making it possible, at constant diesel engine speed, to reduce the speed until the machine stops; this function is controlled by a pedal which also performs the hydrostatic braking function
- Hydraulic translation motor and pump are variable-displacement enabling the gear ratio to be varied continuously over the entire speed range
 - from 0 to 20 km/h
- Max. tractive effort 4500 daN
- Max. pressure 420 bars
- Max. flow rate 163 l/min
- Pump 71 cm³ 4.33 cu.in

Axles and wheels

- 4 driving wheels of the same size
- (*) fitted as standard with 400 / 70.20 T 37 Dunlop tyres
- (***)fitted optionally with 425 / 75 R 20 M 27 Michelin tyres
- (***) fitted optionally with 18.19.5 T 35 Dunlop tyres (CXi only)
- 2 rigid driving axles fixed on the chassis
 - on back axle transfer box with a single ratio giving movement directly to the back axle and to the front axle by a telescopic cardan shaft
- Simultaneous differential lock on both axles
- Negotiable incline
 - sur route : 35°
 - all terrain : 35°

Brakes

- Main brakes multiple disc with oil bath incorporated in both axles
- Parking brakes multiple disc with oil bath incorporated in both axles
- Emergency brakes multiple disc with oil bath incorporated in both axles operating by lack of pressure
- Hydrostatic brake operated by the "Inching" function pedal

STEERING

- "Load Sensing" hydraulic steering by 1 double-acting cylinder controlled by a directional control block with priority valve
 - Max. pressure 175 bar
 - Max. flow rate 35 l/mn

EQUIPMENT

- Made up of 3 parts : boom, intermediate boom and arm
- Boom controlled by a patented cylinder and connecting rod system permitting 180° movement
- Offset
 - mechanical right 22° and left 22° standard
 - hydraulic optional right 30° and left 30°
- Quick-release tool connection system
 - take-off with automatic mechanical locking
 - hydraulic unlocking
- Puissance de l'équipement
 - Tear-out force (as backhoe) 4900 daN
 - Tearout force (as loader) 4100 daN
 - For lifting and handling, the "Mecalac" must be provided with safety valves (see recommendation)

HYDRAULIC CIRCUIT

Equipment circuit

- Variable displacement piston pump 45 cm³
 - max. pressure 250 bar
 - max. flow rate 103 l/mn
- "Load Sensing" directional control block
 - integral simultaneity of equipment slewing and movements
 - progressivity of movements independent of load and flow rate
 - Load- and flow rate-dependent pressure control
 - pressure control depending on the highest load
 - Flow rate automatically controlled according to use resulting in limitation of viscous restriction and a constant engine speed, fuel economy, reduction in sound level
- Ancillary functions controlled by solenoid valves
 - independently-controlled right and left stabilisers
 - differential lock
 - tool unlocking
 - arm-rest raising safety device
 - running board (CXi)
 - brakes : parking, emergency, main, hydrostatic
 - accelerator

Slewing, steering circuit

- Independent of the other circuits ; by fixed displacement pump

- Alternator 12 V 95 Ah
- Starter 12 V 2.4 Kw

CAB

- ROPS and FOPS approved
- Safety glass providing greater visibility in all directions
 - Sliding right-hand side window and windscreen
- Power-assisted controls
- Seat : position, back and hardness fully adjustable
- Heating and demisting by independent system with thermostatic temperature controls
- Ventilation in summer
- Electric fuel gauge and all the safety indicators grouped together on the ergonomic dashboard
- Hour counter visible without getting into the cab
- Main fuses easy to see and reach

Sound proofing

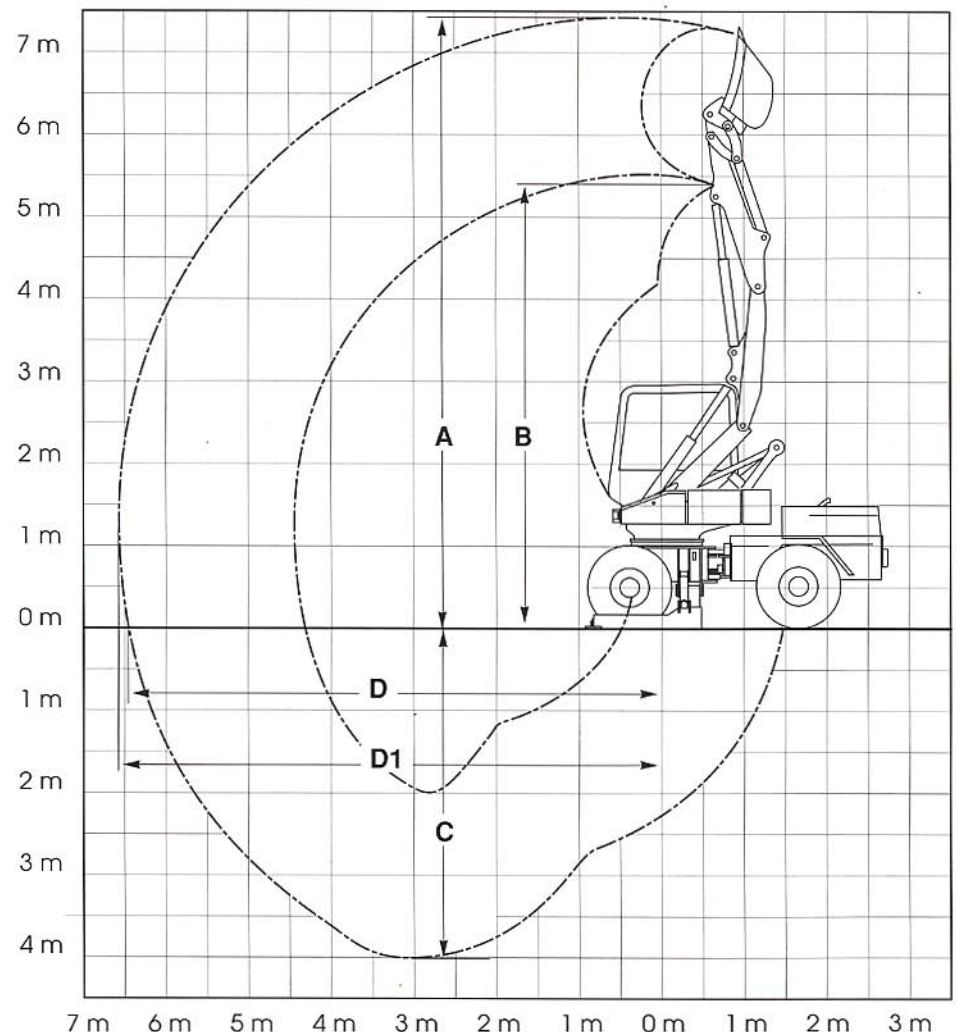
- Acoustic power (outside): 105 dB (A)
- Acoustic pressure (cab): 70LpA

ELECTRICAL SYSTEM

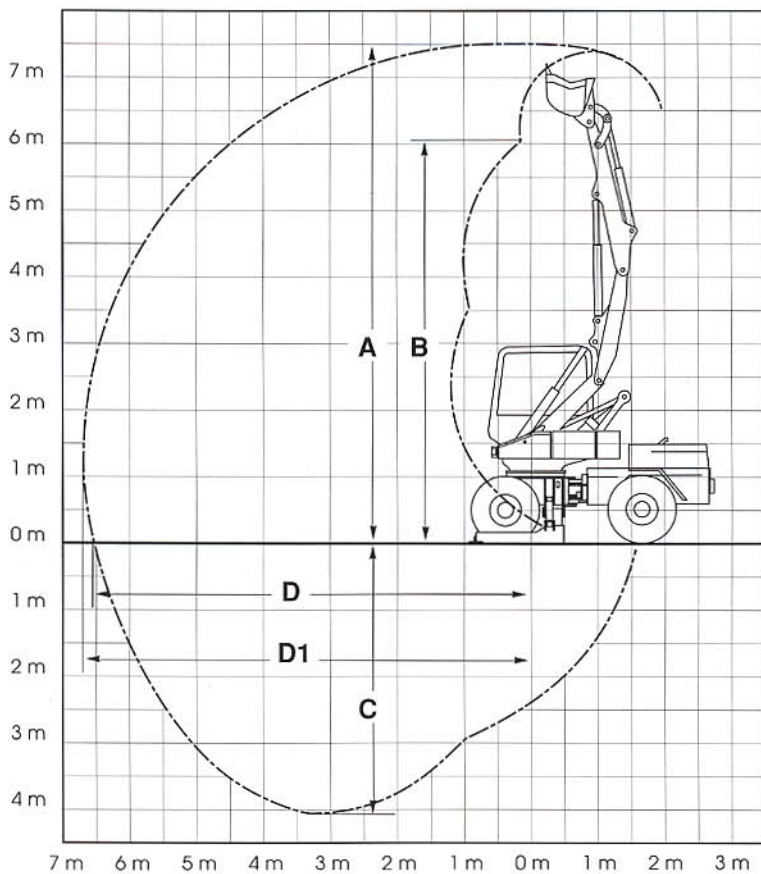
- Battery 2 x 6V 145 Amp.

BACKHOE EQUIPMENT (*)

* With DUNLOP 400/70.20 T 37 tyres



mm	A	B	C	D	D1
11 CX / 11 CXi	7265	5355	4100	6000	6140



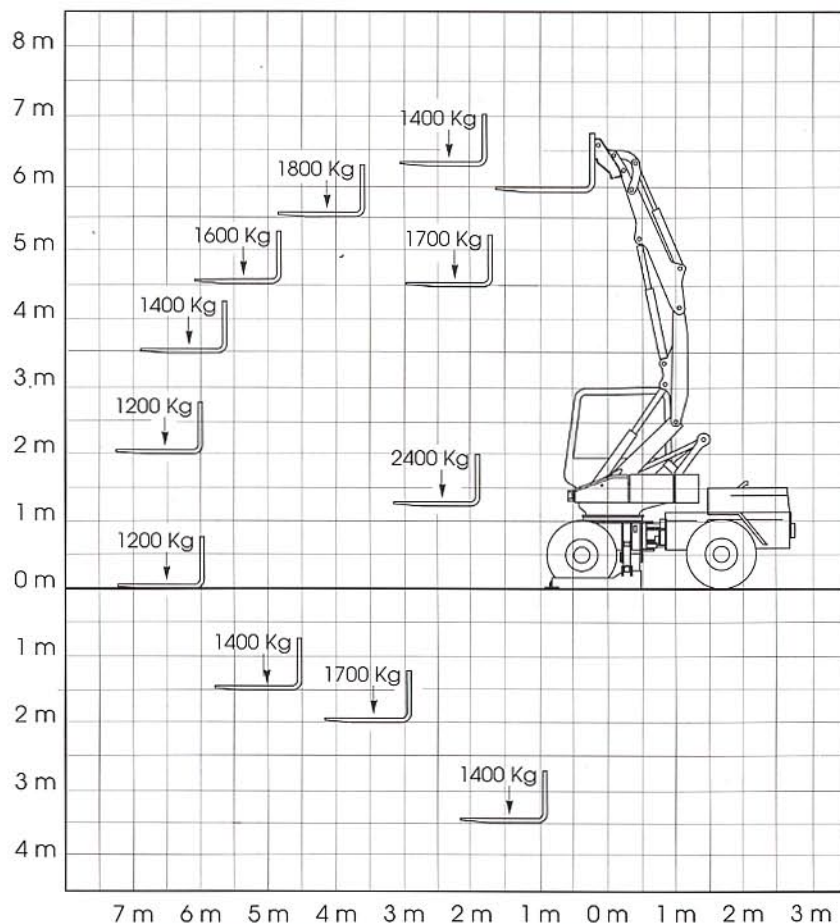
LOADER EQUIPMENT (*)

* With DUNLOP 400/70.20 T 37 tyres

mm	A	B	C	D	D1
11 CX / 11 CXi	7485	6050	4100	6100	6230

HANDLING EQUIPMENT (*)

- * With DUNLOP 400/70.20 T 37 tyres
- * Stabilizers resting on the ground.
- * Loads indicated: at 75% of the stability limit and 87% of the hydraulic limit



Mecalac

Machines designed and manufactured in France

With a view to permanently improving their machines, Mecalac reserve the right to modify the specifications without prior notice.

PAE LES GLAISINS BP 230
74942 ANNECY-LE VIEUX
CEDEX FRANCE
Tél. 50 64 01 63
Télex 385 254 F
Téléfax 50 64 02 79

GROUPE PEL-JOB