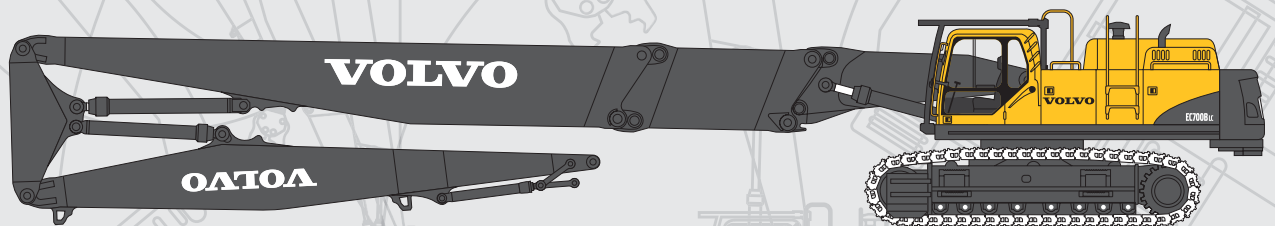


# VOLVO EXCAVATORS

# DEMOLITION

## EC210CLD - EC460CLD, EC700B STANDARD DEMOLITION EC360CHR / EC700BHR ULTRA HIGH REACH DEMOLITION



### EC210CLD - EC460CLD, EC700B Standard Demolition

- Engine power, net :  
110 kW (150 hp) - 316 kW (424 hp)
- Operating weight :  
21,7 t - 70,6 t
- Maximum digging reach :  
9,9 m - 11,5 m

### EC360CHR High Reach Demolition

- Engine power, net :  
184 kW (250 hp)
- Operating weight :  
43,0 t - 46,3 t
- Additional counterweight :  
3,0 t
- Maximum pin height :  
21,0 m

### EC700BHR Ultra High Reach Demolition

- Engine power, net :  
316 kW (424 hp)
- Operating weight :  
81,5 t - 88,5 t
- Additional counterweight :  
5,0 t
- Maximum pin height :  
29,0 m - 32,0 m

**MORE CARE. BUILT IN.**





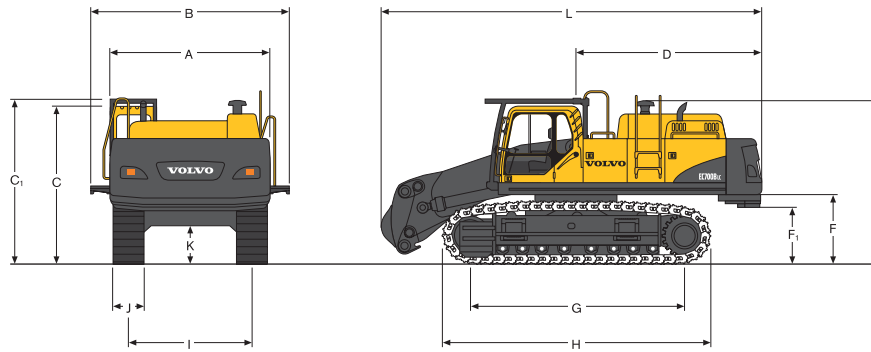
# SPECIFICATIONS EC210CLD - EC460CLD, EC700B STANDARD DEMOLITION

## Main Data of standard demolition machines

General Data		EC210CLD	EC240CLD	EC290CLD	EC360CLD	EC460CLD	EC700B
Operating weight, without attachment	t	21,7-23,0	25,3-26,2	29,1-30,4	38,3-39,7	45,6-48,3	68,3-70,6
Engine		Volvo D6E	Volvo D7E	Volvo D7E	Volvo D12D	Volvo D12D	Volvo D16E
Rated output, at r/s (r/min)	rpm	30 (1 800)	30 (1 800)	30 (1 800)	28 (1 700)	30 (1 800)	30 (1 800)
ISO 9249/SAE J1349, net kW (hp)	kW (hp)	110 (150)	125 (170)	143 (195)	184 (250)	235 (320)	316 (424)
Maximum torque	Nm @ rpm	735	870	965	1 475	1 720	2 500
Track length	mm	4 460	4 650	4 870	5 180	5 370	5 990
Track gauge	mm	2 390	2 590	2 590	2 740	2 740	3 350
Bucket capacity	m <sup>3</sup>	0,8-1,4	1,0-1,8	1,1-2,0	1,5-2,8	1,8-3,5	2,5-6,6
Lifting capacity along undercarriage	t	7,1	9,1	10,8	11,3	13,8	20,0
at reach/height	m	6,0 / 1,5	6,0 / 1,5	6,0 / 1,5	7,5 / 1,5	7,5 / 1,5	7,5 / 1,5
Breakout force, SAE	kN	130,4	156,9	173,0	209,0	244,2	323,0
Maximum digging reach	m	9,9	10,3	10,7	11,2	12,0	11,5
Maximum digging depth	m	6,7	7,0	7,3	7,5	7,7	7,3
Fuel tank capacity	l	335	470	470	620	685	840
Hydraulic system, total	l	330	320	400	500	525	655
Pump type		2 x variable displacement axial piston pumps					
System pressure (attachment)	MPa	31,4 MPa (320kg/cm <sup>2</sup> )					
with Power Boost (attachment)	MPa	34,3 MPa (350kg/cm <sup>2</sup> )					
Maximum flow rate	l/min	2 x 200	2 x 230	2 x 250	2 x 280	2 x 345	2 x 436
Swing speed	rpm	11,6	11,4	10,2	9,7	8,5	6,7
Travel speed (1st/2nd)	km/h	3,2 / 5,5	3,2 / 5,5	3,3 / 5,2	3,3 / 4,5	2,9 / 4,8	3,0 / 4,5
Gradeability	degree/%	35° (70%) (backhoe only)					
Maximum tractive effort	kN	183,0	209,0	230,5	256,9	325,0	453,0

# SPECIFICATIONS EC360CHR / EC700BHR ULTRA HIGH REACH DEMOLITION

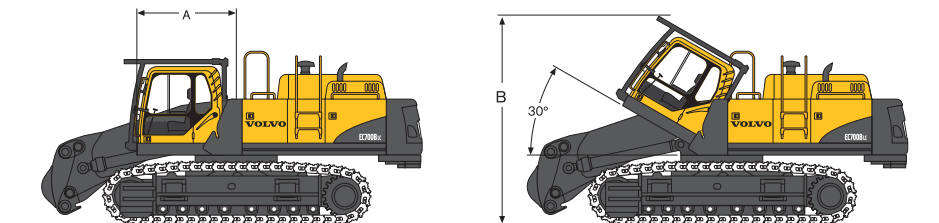
## Dimensions



### Dimensions of basic demolition machines

Description		EC360CHR Undercarriage long crawler	EC360CHR Undercarriage hydraulically retractable	EC700BHR Undercarriage mechanically retractable	EC700BHR Undercarriage hydraulically retractable
A. Width superstructure	mm	2 990	2 990	3 420	3 420
B. Overall width with walkway	mm	3 320	3 320	4 290	4 290
Overall width with SIPS*	mm	3 190	3 190	-	-
Overall width with SIPS removed*	mm	3 055	3 055	-	-
C. Overall height	mm	3 200	3 200	3 480	3 480
C1. Overall height (including FOG)	mm	3 330	3 330	3 610	3 610
D. Tail swing radius	mm	3 390	3 390	4 090	4 090
E. Overall height of precleaner	mm	2 700	2 700	3 590	3 590
F. Minimum counterweight clearance*	mm	1 210	1 210	1 510	1 510
F1. Minimum additional counterweight clearance*	mm	1 080	1 080	1 230	1 230
G. Tumbler length	mm	4 240	4 240	4 750	4 750
H. Track length	mm	5 180	5 180	5 990	5 990
I. Track gauge (extended)	mm	2 740	3 380	3 350	3 740
Track gauge (retracted)	mm	-	2 390	2 750	2 750
J. Shoe width	mm	710	600	650	650
K. Minimum ground clearance*	mm	500	400	860	630
L. Overall length	mm	6 920	6 920	8 380	8 380
Total weight without additional counterweight	t	31,8	35,0	61,0	68,0

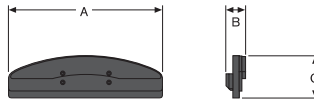
\*With shoe grouser



### Dimensions of demolition machines tilting cab

Description		EC360CHR	EC700BHR
A. Tilting cab length	mm	1 960	2 120
B. Cabin height when fully tilted	mm	4 135	4 450
Cab tilting angle	°	30°	30°

## Dimensions



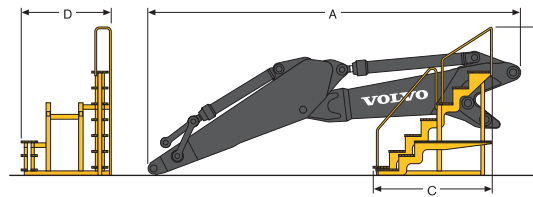
### Dimensions of the additional counterweight\*

Description		EC360CHR	EC700BHR
A. Width additional counterweight	mm	2 990	3 390
B. Thickness additional counterweight	mm	132	432
C. Height additional counterweight	mm	867	934
Total weight additional counterweight	t	3,0	5,0

\* Additional counterweight can be removed for transport

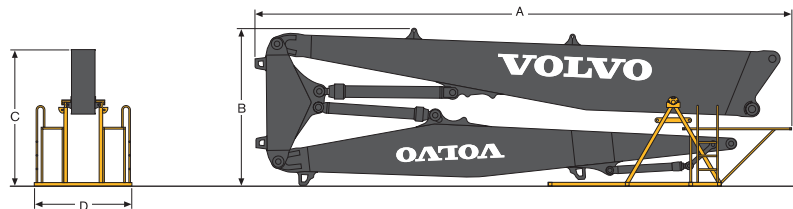
### CAUTION :

The machine can be transported with the digging boom fitted. If it's transported without digging boom but with additional counterweight (plus 5,0 t), take care of stability (tilting back) during the loading / unloading on truck.



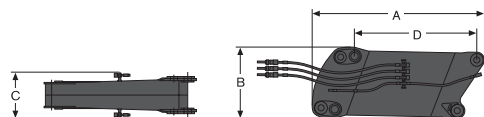
### Dimensions of backhoe equipment

Description		EC360CHR	EC700BHR
A. Length - mounting to arm end	mm	6 460	8 220
B. Overall height	mm	2 060	3 280
C. Length of support cradle	mm	1 180	2 630
D. Width of support cradle	mm	1 110	1 984
Weight of digging boom with (standard dipper arm and) transport cradle	t	4,3	8,3
	(mm)	(2 610)	(3 550)



### Dimensions of 3-piece demolition boom in support cradle

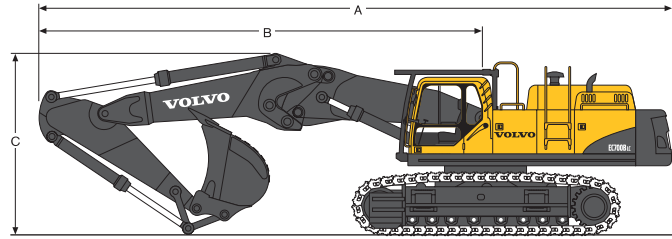
Description		EC360CHR	EC700BHR
A. Overall length	mm	8 070	11 830
B. Overall height	mm	3 110	3 450
C. Length of support cradle	mm	2 650	3 010
D. Width of support cradle	mm	2 110	2 150
Weight of working equipment without attachment, including support cradle	t	8,3	12,0



### Dimensions of demolition boom extension

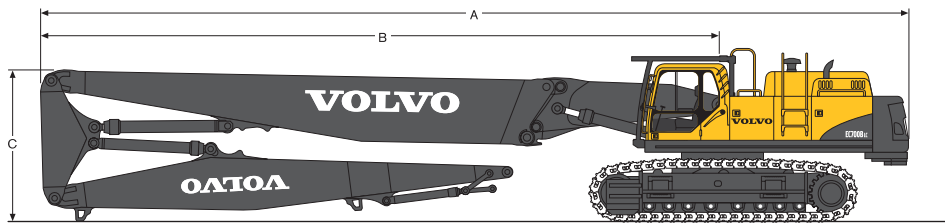
Description		EC700BHR
A. Overall length	mm	3 780
B. Overall height	mm	1 570
C. Overall Width	mm	970
D. Extension length	mm	3000
Weight of demolition boom extension	t	3,5

## Dimensions



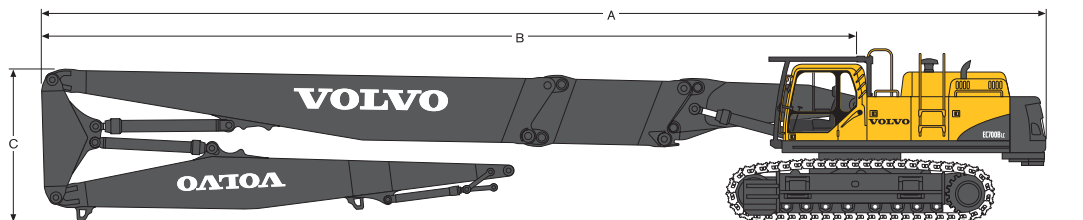
### Dimensions of demolition machine including backhoe equipment (position for transport)

Description		EC360BHR			EC700BHR			
Boom		Straight boom 6,8 m			Straight boom 8,3 m			
Arm		2,6 m	3,2 m	3,9 m	2,9 m	3,6 m	4,2 m	
A. Overall length	mm	11 450	11 400	11 260	13 920	13 760	13 660	
B. Swing centre to front of equipment	mm	8 060	8 010	7 870	9 830	9 670	9 570	
C. Maximum height of boom in transport position	mm	3 330	3 320	3 970	3 980	4 220	4 430	
Operating weight, excluding bucket		t	37,1	37,2	37,3	67,5	67,6	68,0



### Dimensions of demolition machine including 3-piece demolition attachment

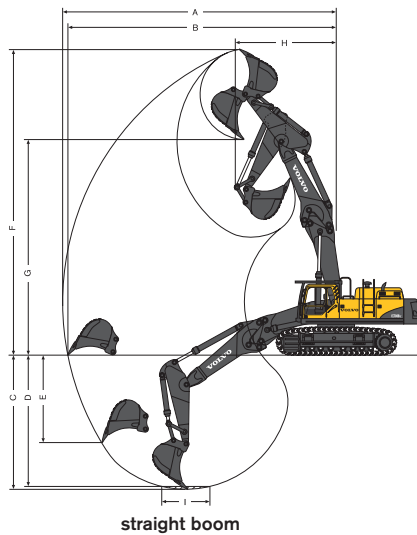
Description		EC360BHR	EC700BHR
A. Overall length	mm	14 350	19 130
B. Swing centre to front of equipment	mm	10 960	15 040
C. Maximum height of boom in transport position	mm	3 110	3 350



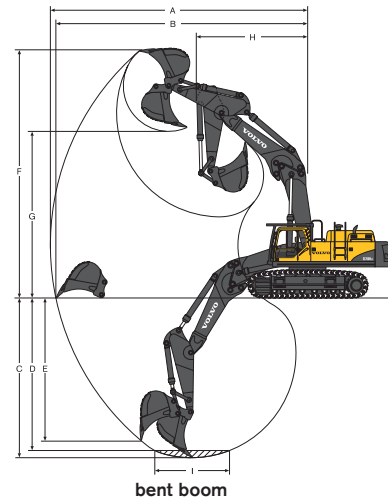
### Dimensions of demolition machine including 3-piece demolition attachment and boom extension

Description		EC700BHR
A. Overall length	mm	22 130
B. Swing centre to front of equipment	mm	18 040
C. Maximum height of boom in transport position	mm	3 340

## Working ranges & digging forces



straight boom



bent boom

### Working ranges of demolition machines with straight boom\*

Description		EC360CHR			EC700BHR		
Boom		Straight boom 6,8 m			Straight boom 8,3 m		
Arm		2,6 m	3,2 m	3,9 m	2,9 m	3,6 m	4,2 m
A. Maximum digging reach	mm	11 200	11 770	12 440	13 390	13 910	14 550
B. Maximum digging reach on ground	mm	10 990	11 570	12 260	13 130	13 660	14 300
C. Maximum digging depth	mm	5 090	5 680	6 390	6 580	7 160	7 810
D. Maximum digging depth (8' level)	mm	4 910	5 540	6 260	6 430	7 160	7 700
E. Maximum vertical wall digging depth	mm	2 560	3 980	4 820	4 290	4 930	5 470
F. Maximum cutting height	mm	12 840	13 330	13 920	14 970	15 300	15 780
G. Maximum dumping height	mm	9 430	9 920	10 520	10 560	11 030	11 520
H. Minimum front swing radius	mm	3 370	3 300	3 630	4 420	4 510	4 760

### Digging forces of demolition machines with straight boom\*

Description		EC360CHR			EC700BHR		
Boom		Straight boom 6,8 m			Straight boom 8,3 m		
Arm		2,6 m	3,2 m	3,9 m	2,9 m	3,6 m	4,2 m
Bucket tip radius	mm	1 620	1 620	1 620	2 150	2 150	2 150
Breakout force-bucket (Normal / Power boost) ISO	kN	215/236	215/236	215/236	326/356	326/356	326/356
Tearout force-arm (Normal / Power boost) ISO	kN	195/213	161/176	170/153	303/332	265/290	236/258
Rotation angle, bucket	°	177	177	177	173	173	173

### Working ranges of demolition machines with bent boom\*

Description		EC360CHR			EC700BHR		
Boom		Bent boom 6,5 m			Bent boom 7,7 m		
Arm		2,6 m	3,2 m	3,9 m	2,9 m	3,6 m	4,2 m
A. Maximum digging reach	mm	10 650	11 190	11 850	12 600	13 070	13 660
B. Maximum digging reach on ground	mm	10 440	10 980	11 650	12 330	12 810	13 400
C. Maximum digging depth	mm	6 290	6 890	7 590	7 830	8 430	8 980
D. Maximum digging depth (8' level)	mm	6 120	6 740	7 470	7 680	8 300	8 850
E. Maximum vertical wall digging depth	mm	4 890	5 360	5 960	7 020	7 720	8 220
F. Maximum cutting height	mm	11 040	11 320	11 690	12 250	12 280	12 530
G. Maximum dumping height	mm	7 820	8 110	8 490	8 160	8 360	8 610
H. Minimum front swing radius	mm	3 790	3 720	3 770	5 490	5 240	5 340

### Digging forces of demolition machines with bent boom\*

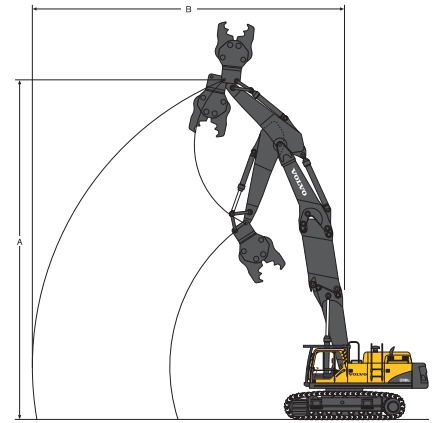
Description		EC360CHR			EC700BHR		
Boom		Bent boom 6,5 m			Bent boom 7,7 m		
Arm		2,6 m	3,2 m	3,9 m	2,9 m	3,6 m	4,2 m
Bucket tip radius	mm	1 620	1 620	1 620	2 150	2 150	2 150
Breakout force-bucket (Normal / Power boost) ISO	kN	215/236	215/236	215/236	326/356	326/356	326/356
Tearout force-arm (Normal / Power boost) ISO	kN	195/213	161/176	170/153	303/332	265/290	236/258
Rotation angle, bucket	°	177	177	177	173	173	173

\*Data with direct fit bucket

## Working ranges & digging forces

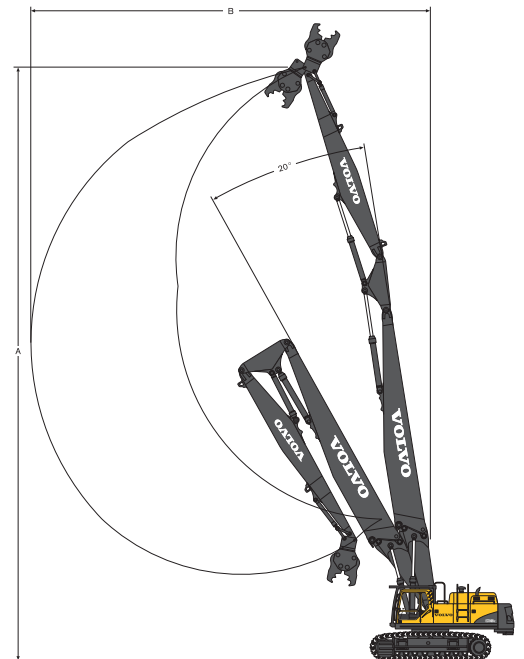
### Working ranges of demolition machine with mass demolition boom

Description		EC700BHR
A. Maximum pin height	mm	16 630
B. Maximum forward reach	mm	15 290
Weight of demolition boom extension	t	3,5
Maximum tool weight	t	-



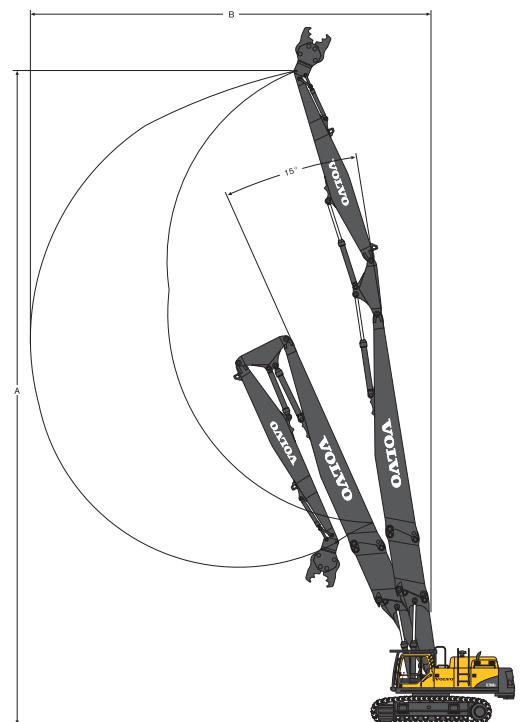
### Working ranges of demolition machines with 3-piece demolition boom

Description		EC360CHR	EC700BHR
A. Maximum pin height	mm	21 000	29 050
B. Maximum pin reach	mm	12 900	19 550
Maximum tool weight	t	3,0	3,5



### Working ranges of demolition machine with 3-piece demolition boom and boom extension

Description		EC700BHR
A. Maximum pin height	mm	32 010
B. Maximum pin reach	mm	19 620
Maximum tool weight with extension	t	2,5





## Lifting capacities EC360CHR with demolition equipment

### NOTE!

The rated loads in the table should be used as a guide.

Attachments, uneven ground conditions and soft or poor ground conditions have an effect on rated load.

The operator is responsible for being aware of these effects.

The equipment should not be lowered to or raised from the ground with the mid or demolition dipper arm extended.

### IMPORTANT!

The attachment weight is limited to 3,0 t, including quick coupler and attachment plate if fitted.

Weights that exceed 3,0 t could cause the machine to become unstable and tip over.

EC360CHR Demolition machine condition : with additional counterweight, without attachment and quick fit	
Outreach along undercarriage	Load (without load cell and fixing device)
m	t
11,7	6,9*
13,5	6,0*
15,9	5,3*
17,0	3,4

\*) The load capacities are limited by the machine's hydraulic lifting capacity rather than the tipping load.

Working pressure with powerboost = 35 MPa

The above values are in compliance with ISO10567 standard. They do not exceed 87 % of hydraulic lifting capacity or 75 % of tipping load, with the machine on firm, level ground.

## Lifting capacities EC700BHR with demolition equipment

### NOTE!

The rated loads in the table should be used as a guide.

Attachments, uneven ground conditions and soft or poor ground conditions have an effect on rated load.

The operator is responsible for being aware of these effects.

The equipment should not be lowered to or raised from the ground with the mid or demolition dipper arm extended.

### IMPORTANT!

The attachment weight is limited to 3,0 t, including quick coupler and attachment plate if fitted.

Weights that exceed 3,0 t could cause the machine to become unstable and tip over.

EC700BHR Demolition machine condition : with additional counterweight and 3,0 m boom extension, without attachment and quick fit	
Outreach along undercarriage	Load (without load cell and fixing device)
m	t
12,8	6,9*
16,8	4,7*
20,0	3,4*
23,0	2,5

\*) The load capacities are limited by the machine's hydraulic lifting capacity rather than the tipping load.

Working pressure with powerboost = 35 MPa

The above values are in compliance with ISO10567 standard. They do not exceed 87 % of hydraulic lifting capacity or 75 % of tipping load, with the machine on firm, level ground.




## Lifting capacity EC360CHR

At the arm end without bucket.

For lifting capacity including bucket, simply subtract actual weight of the direct fit bucket or the bucket with quick fit from the following values.

### • EC360CHR with hydraulically retractable undercarriage

	Across undercarriage		1,5 m		3,0 m		4,5 m		6,0 m		7,5 m		9,0 m		10,5 m		12,0 m		Maximum reach			
	↑	→	↑	→	↑	→	↑	→	↑	→	↑	→	↑	→	↑	→	↑	→	↑	→		
Undercarriage hydraulically retractable																			9,8*	9,8*	7,1	
																			9,7*	9,7*	8,0	
																			9,8*	9,6*	8,6	
																			9,6	8,0	8,9	
Bent boom 6,5 m																						
Arm 2,6 m																						
Counterweight 7 300 kg																						
Undercarriage hydraulically retractable																						
Bent boom 6,5 m																						
Arm 3,2 m																						
Counterweight 7 300 kg																						
Undercarriage hydraulically retractable																						
Bent boom 6,5 m																						
Arm 3,9 m																						
Counterweight 7 300 kg																						
Undercarriage hydraulically retractable																						
Straight boom 6,8 m																						
Arm 2,6 m																						
Counterweight 7 300 kg																						
Undercarriage hydraulically retractable																						
Straight boom 6,8 m																						
Arm 3,2 m																						
Counterweight 7 300 kg																						
Undercarriage hydraulically retractable																						
Straight boom 6,8 m																						
Arm 3,9 m																						
Counterweight 7 300 kg																						

Notes:

1. The above loads are in compliance with SAE and ISO Hydraulic Excavator Lift Capacity Standards.
2. They do not exceed 87% of hydraulic lifting capacity or 75% of tipping load.
3. Rated loads marked with an asterisk (\*) are limited by hydraulic capacity rather than tipping load.





# STANDARD EQUIPMENT EC360CHR

## Engine

Turbocharged, 4 stroke diesel engine with water cooling, direct injection and charged air cooler that meets EU Stage IIIA requirements  
3-stage air filter with indicator and precleaner  
Air intake heater  
Electric engine shut-off  
Fuel filter and water separator  
Fuel filler pump: 50 l/min, with automatic shut-off  
Alternator, 80 A

## Electric/Electronic control system

Contronics  
– Advanced mode control system  
– Self-diagnostic system  
Machine status indication  
Engine speed sensing power control  
Automatic idling system  
One-touch power boost  
Safety stop/start function  
Adjustable LCD color monitor  
Master electrical disconnect switch  
Engine restart prevention circuit  
High-capacity halogen lights:  
– Frame-mounted 2  
– Boom-mounted 4  
Batteries, 2 x 12 V / 200 Ah  
Start motor, 24 V / 6,6 kW

## Hydraulic system

Hose rupture valve: boom cylinder and arm  
Hydraulic piping:  
Hammer & shear:  
– one and two pump flow  
– Pedal switch control  
– Slope & rotator  
– Oil leak (drain) line  
– Quick fit piping

Overload warning device  
Automatic sensing hydraulic system  
– Summation system  
– Boom priority  
– Arm priority  
– Slew priority  
Boom and arm regeneration valves  
Slew anti-rebound valves  
Boom and arm holding valves  
Multi-stage filtering system  
Cylinder cushioning  
Cylinder contamination seals  
Auxiliary hydraulic valve  
Automatic two-speed travel motors  
Hydraulic oil, ISO VG 46  
Bucket & boom cylinder guard  
Two pump control for hammer & shear

## Superstructure

Access way with handrail  
**Removable additional counterweight for high reach**  
Full height counterweight:  
7 250 kg  
Tool storage area  
Punched metal anti-slip plates  
Undercover plate (heavy-duty 8 mm)  
HD double thickness side doors with micro mesh  
Side Impact Protection System

## Tilting cab, and interior

Fabric seat with heater and air suspension  
Control Joystick with proportional control  
Heater & air-conditioner, automatic  
Hydraulic dampening cab mounts  
Adjustable operator seat and joystick control console  
Flexible antenna  
Hydraulic safety lock lever

Cab, all-weather sound suppressed, includes:

- Ashtray
- Cup holder (x3)
- Lighter
- Door locks
- Tinted glass
- Floor mat
- Horn
- Large storage area
- Pull-up type front window
- Removable lower windshield
- Seat belt
- Safety glass
- Sun shields, front, roof, rear
- Windshield wiper with intermittent feature

Anti-vandalism kit assembly preparation  
Master key  
Falling object guard (FOG)  
– Frame-mounted

## Undercarriage

Swing ring guard  
Hydraulic track adjusters  
Greased and sealed track link  
Full track guards  
Undercover plate (heavy-duty 10 mm)

## Track shoes

Track shoes 600 mm with triple grousers

## Service

Tool kit, daily maintenance

# OPTIONAL EQUIPMENT EC360CHR

## Engine

Block heater: 120 V, 240 V  
Fuel filler pump  
Oil bath pre-cleaner  
Diesel coolant heater  
Water separator with heater

## Electric

Extra lights:  
– Cab front top-mounted 2  
– Cab rear-mounted 1  
– Counterweight-mounted 1  
CareTrack  
Travel alarm  
Rear view camera  
Anti-theft system  
Rotating warning beacon

## Hydraulic system

Boom float function  
Hydraulic piping:  
Hammer & shear:  
– Additional return filter

Volvo hydraulic quick fit, S3 size  
Straight travel pedal  
Hydraulic oil, ISO VG 32  
Hydraulic oil, ISO VG 46  
Hydraulic oil, ISO VG 68  
Hydraulic oil, biodegradable 32  
Hydraulic oil, biodegradable 46  
Snow protection kit

## Cab and interior

Seat  
Seat with heater  
Seat with heater and air sus-pension  
Seat belt, 3 inch  
Control joystick with semi-long levers  
Control joystic, 3 switch  
Control joystick with 5 switches each  
Air-conditioner climate control  
Cab-mounted falling object protective structure (FOPS)  
Safety screen for front window  
Lower wiper with intermittent control  
Rear view camera

## Undercarriage

### Hydraulically retracted

## Track shoes

600 mm, 700 mm triple grousers

## Digging equipment

### Straight boom 6,8 m

### Bent boom 6,5 m

Arm : 2,6 m/3,2 m/3,9 m/5,0 m

## High reach

### Boom HR: 21 m

### Camera system for high reach rig

## Service

Hand lamp  
Spare parts  
Tool kit, full scale

Standard and optional equipment may vary by market. Please consult your local Volvo dealer for details

# STANDARD EQUIPMENT EC700BHR

## Engine

Turbocharged, 4 stroke diesel engine with water cooling, direct injection and charged air cooler that meets EU Stage IIIA requirements  
3-stage air filter with indicator and precleaner  
Air intake heater  
Electric engine shut-off  
Fuel filter and water separator  
Fuel filler pump: 100 l/min, with automatic shut-off  
Alternator, 80 A

## Electric/Electronic control system

Contronics  
- Advanced mode control system  
- Self-diagnostic system  
Machine status indication  
Engine speed sensing power control  
Automatic idling system  
One-touch power boost  
Safety stop/start function  
Adjustable monitor  
Master switch  
Engine restart prevention circuit  
High-capacity halogen lights:  
- Frame-mounted 3  
- Boom-mounted 4  
Batteries, 2 x 12 V / 225 Ah  
Start motor, 28 V / 6,6 kW

## Hydraulic system

Hose rupture valve: boom and arm proportional control via joystick roller button  
Hydraulic piping:  
Hammer & shear:  
- one and two pump flow  
- Quick fit piping

Overload warning device  
Automatic hydraulic system  
- Summation system  
- Boom priority  
- Arm priority  
- Slew priority  
Boom and arm regeneration valves  
Slew anti-rebound valves  
Boom and arm holding valves  
2 pump flow control for hammer & shear  
Multi-stage filtering system  
Cylinder cushioning  
Cylinder contamination seals  
Bucket and boom cylinder guard  
Auxiliary hydraulic valve  
Automatic two-speed travel motors  
Hydraulic oil, ISO VG 46

## Superstructure

Access way with handrail  
**Removable additional counterweight for high reach**  
Full height counterweight:  
11 300 kg  
Tool storage area  
Punched metal anti-slip plates  
Undercover plate (heavy-duty 8 mm)  
Side walk-way

## Tilting cab, and interior

Fabric seat with heater and air suspension  
Control Joystick with proportional control  
Heater & air-conditioner, automatic  
Hydraulic dampening cab mounts  
Adjustable operator seat and joystick control console  
Flexible antenna  
Hydraulic safety lock lever

Cab, all-weather sound suppressed, includes:

- Ashtray
- Cup holder
- Lighter
- Door locks
- Tinted glass
- Floor mat
- Horn
- Large storage area
- Pull-up type front window
- Removable lower windshield
- Seat belt
- Safety glass
- Sun shield, front, roof, rear
- Windshield wiper with intermittent feature
- Stereo cassette radio

Anti-vandalism kit assembly preparation

Master ignition key

Falling object guard (FOG)

- Frame-mounted

## Undercarriage

Swing ring guard  
Hydraulic track adjusters  
Greased and sealed track chain  
Full track guards  
Undercover plate (heavy-duty 10 mm)  
Mechanically retractable track gauge

## Track shoes

Track shoes 650 mm with double grousers

## Service

Special tool for  
mechanical retractable frame

# OPTIONAL EQUIPMENT EC700BHR

## Engine

Block heater: 120 V, 240 V  
Dual stage precleaner  
Precleaner, Oil bath  
Diesel coolant heater  
Water separator with heater  
Low noise kit  
Fuel filler pump,

## Electric

Extra lights:  
- Cab-mounted 1  
- Counterweight-mounted 1  
Travel alarm  
Swing alarm  
Anti-theft system  
Rotating warning beacon

## Hydraulic system

Hydraulic piping:  
- Additional return filter  
- Pedal switch control

Straight travel pedal  
Hydraulic oil, ISO VG 32  
Hydraulic oil, ISO VG 46  
Hydraulic oil, ISO VG 68  
Hydraulic oil, biodegradable 32  
Hydraulic oil, biodegradable 46  
Arctic hose kit  
Snow protection kit

## Cab and interior

Seat  
Seat with heater  
Seat with heater and air sus-pension  
Seat belt, 3 inch  
Air-conditioner climate control  
Cab-mounted falling object protective structure (FOPS)  
Foot support bar  
Safety screen for front window  
Lower wiper with intermittent control

## Undercarriage

**Hydraulically retracted**

## Track shoes

750 mm, 900 mm double grousers

## Digging equipment

**Straight boom 8,3 m**

**Bent boom 7,7 m**

Arm: 2,9 m/3,55 m/4,2 m/ 5,2m

## High reach

**Mass demolition boom 16,6 m**

**Boom HR: 29 m**

**Boom extension: 3 m**

**Camera system for high reach rig**

## Service

Hand lamp  
Spare parts  
Tool kit, full scale

Standard and optional equipment may vary by market. Please consult your local Volvo dealer for details



Volvo Construction Equipment is different. Our machines are designed, built and supported in a different way. That difference comes from an engineering heritage of over 175 years. A heritage of thinking first about the people who actually use the machines. About how to help them be safer, more comfortable, more productive. About the environment we all share. The result of that thinking is a growing range of machines and a global support network dedicated to helping you do more. People around the world are proud to use Volvo. And we're proud of what makes Volvo different – **More care. Built in.**



*Not all products are available in all markets. Under our policy of continuous improvement, we reserve the right to change specifications and design without prior notice. The illustrations do not necessarily show the standard version of the machine.*

# **VOLVO**

**Volvo Construction Equipment**  
[www.volvo.com](http://www.volvo.com)

Ref. No. 21 B 100 4203 English, global  
Printed in Sweden 2008.05-2,0 EXC  
Volvo, Konz