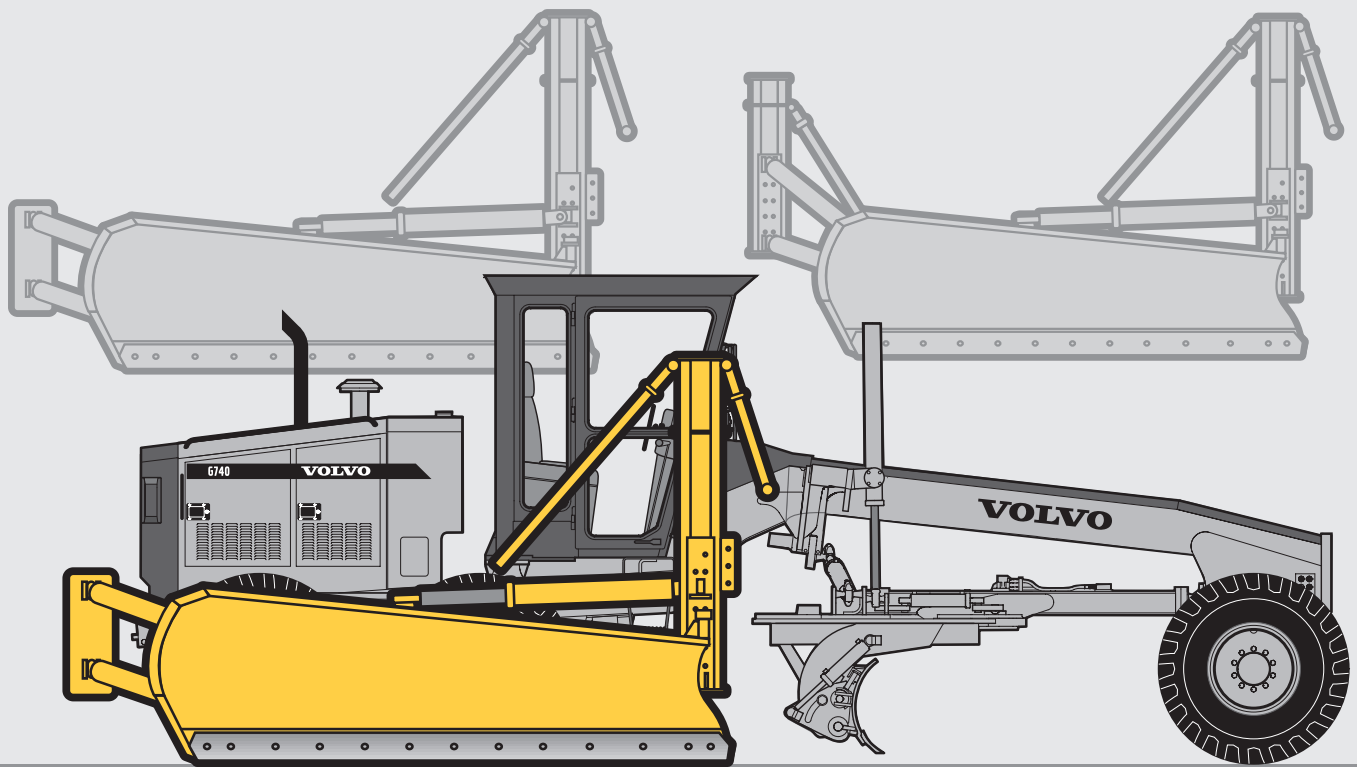


**VOLVO MOTOR GRADER**

# HYDRAULIC SNOW WING

**ATTACHMENT**



The Volvo Hydraulic Snow Wing is designed for high or low speed snow clearing application in combination with the grader moldboard or snow plow as the primary plowing tool. As material is displaced from the snow plow, the snow wing is designed to displace the material far back from the road surface to eliminate snow buildup and facilitate continued snow displacement.

## KEY FEATURES:

- Direct acting full hydraulic controls for excellent wing response
- Rear mounted Hydraulic Snow Wing can be used in conjunction with the moldboard for wider clearing width per pass
- Available in high and low benching configurations
- Rear mounting uses rear grader weight for excellent stability in high speed snow clearing operations

**VOLVO**

## MODEL W030 (high bench)

## MODEL W040 (low bench)

### • Dimensions:

Weight - High bench	4,800 lb	(2 177 kg)
- Low bench	4,000 lb	(1 814 kg)

### • Moldboard dimensions:

Height at toe	29"	(737 mm)
Height at discharge end	42"	(1 067 mm)
Length of cutting edge	150"	(3 810 mm)
Cutting width maximum	115"	(2 921 mm)
Cutting width minimum	88"	(2 235 mm)

### • Mounted dimensions:

(on G740 grader with 14:00 tires)		
Overall height	136"	(3 454 mm)
Minimum width		
Carry position	120"	(3 048 mm)
Masts - no wing	109"	(2 769 mm)
Benching height - low	38"	(965 mm)
Benching height - high	60"	(1 564 mm)

### • Moldboard construction:

Torque tube and rib construction resists flexing and twisting under extreme shock loads		
Moldboard skin - High carbon steel plate	3/16"	(4,7 mm)
Reversible cutting edge:		
1/2" x 8" x 150"		(13 mm x 203 mm x 3 810 mm)

• Stand-off arms: Two 3.0" (76 mm) stand-off arms have a coil spring shock absorber and are straddle mounted for strength. Arms may be adjusted over 6.0" (152 mm) intervals to vary width and tilt of wing

### • Tilt angle:

Arm adjustment		
- Upper	78" to 108"	(1 981 mm to 2 743 mm)
- Lower	78" to 108"	(1 981 mm to 2 743 mm)
Trip wing available optionally		

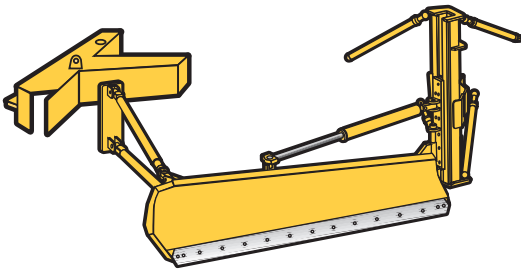
### • Masts:

High Bench		
Maximum level benching height - Skid shoe to protect bottom of mast	60"	(1 524 mm)
Ground clearance (14:00 tires)		
- Front mast	10"	(254 mm)
- Rear mast	15"	(380 mm)
Low Bench		
Maximum level benching height	38"	(965 mm)
Skid shoe to protect bottom of mast		
Ground clearance (14:00 tires)		
- Front mast	10"	(254 mm)
- Rear mast	15"	(380 mm)

• Standard paint color: Volvo Gray

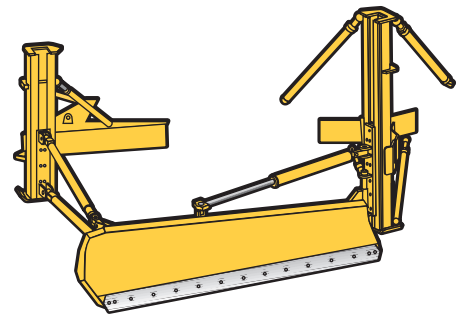
• Consult your dealer for hydraulic and mounting requirements

## LOW BENCH CONFIGURATION



At Volvo, we build our own line of custom designed attachments, to increase the versatility and productivity of our graders. Volvo attachments are made by grader specialists to meet the unique performance characteristics required in grader applications.

## HIGH BENCH CONFIGURATION



Your safety and the safety of those around you depends on using care and judgement when operating and servicing your grader. Do not operate the grader until you read and understand the warnings and instructions in the operator's manual. Volvo Motor Graders Limited is an ISO 9001 and 14001 registered company. [www.volvo.com](http://www.volvo.com)

Under our policy of continuous product development and improvement, we reserve the right to change the specifications and design without prior notice. The illustrations do not necessarily show the standard versions of the attachment or the machine.

# VOLVO

Volvo Construction Equipment Group

Ref. No. 21 2 434 1041  
Printed in Canada 1/2001- 10,0

GDR