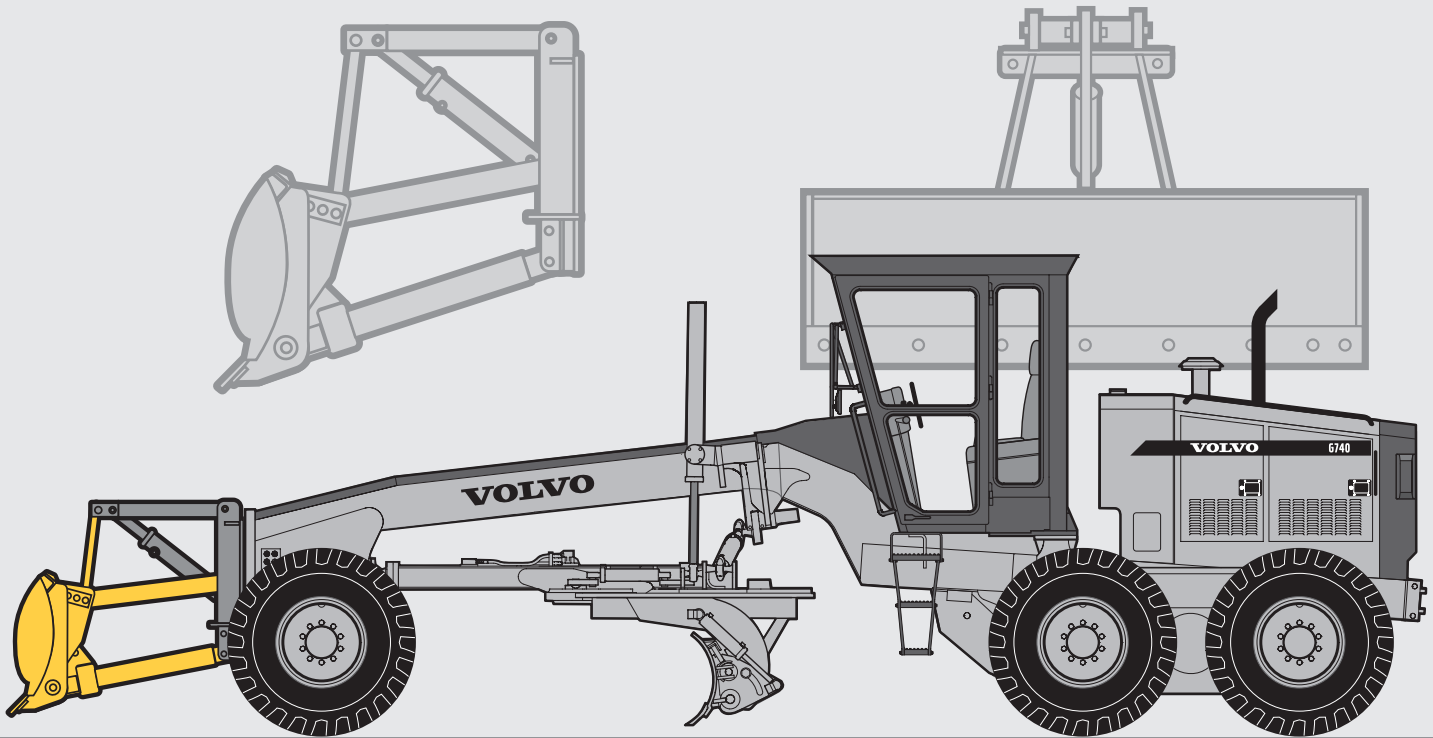


**VOLVO MOTOR GRADER**

# DOZER BLADE

**ATTACHMENT**



The Volvo Dozer Blade is ideal for any work requiring heavy loading or high impact. The Dozer Blade is deeply curved for maximum material movement and carry capacity.

## KEY FEATURES:

- Manually adjustable tilt angle
- Parallel lift arms maintain tilt through all ranges of movement
- High carbon steel edge is reversible for long wear
- Generous clearance under blade when raised
- Blade side aprons to limit material spillage

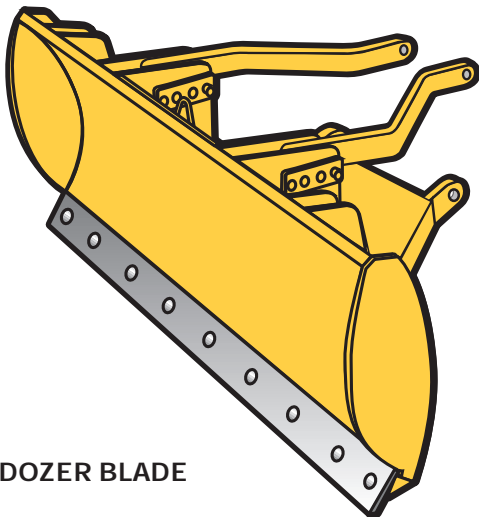
**VOLVO**

**MODEL V007****MODEL V008**

## • Dimensions:

Length	8'	(2,4 m)	9'	(2,7 m)
Weight	1,600 lb	(725 kg)	1,650 lb	(748 kg)
Width	97"	(2 463 mm)	109"	(2 768 mm)
Height	42"	(1 066 mm)	42"	(1 066 mm)
Blade skin thickness	3/16"	(4,7 mm)	3/16"	(4,7 mm)

- Blade pitch: Adjustable 15 degrees in 5 degree increments
- Construction: Arc welded carbon steel
- Edge: Replaceable, carbon steel
- Mounting: Requires a front mounting "A" Frame and front hydraulic operating circuit
- Blade: May be detached from "A" Frame by removing 5 pins and retaining clips
- Lower push frame: 3/16" (4,7 mm) welded steel box with solid steel bar pivot pins
- Standard paint color: Volvo Gray
- Consult your dealer for hydraulic and mounting requirements

**DOZER BLADE**

At Volvo, we build our own line of custom designed attachments, to increase the versatility and productivity of our graders. The Volvo attachments are made by grader specialists to meet the unique performance characteristics required in grader applications.

*Your safety and the safety of those around you depends on using care and judgement when operating and servicing your grader. Do not operate the grader until you read and understand the warnings and instructions in the operator's manual. Volvo Motor Graders Limited is an ISO 9001 and 14001 registered company. [www.volvo.com](http://www.volvo.com)*

*Under our policy of continuous product development and improvement, we reserve the right to change the specifications and design without prior notice. The illustrations do not necessarily show the standard versions of the attachment or the machine.*

**VOLVO**

Volvo Construction Equipment Group

Ref. No. 21 2 434 1033  
Printed in Canada 1/2001- 10,0

GDR