

# VOLVO EXCAVATORS

EC450, EC650



**VOLVO**

# Heavyweight-class performance

You know what is demanded of a modern production machine in terms of an efficient and comfortable work station. In terms of load capacity and durability. In terms of reliability and total economy. You may even demand more than many machines in this weight class are normally able to deliver.

What you really want is an ideal combination of brute strength and smart technology.

*The market's strongest 45-tonner, the Volvo EC450, and its big brother, the Volvo EC650, stand up to tough challenges year after year.*



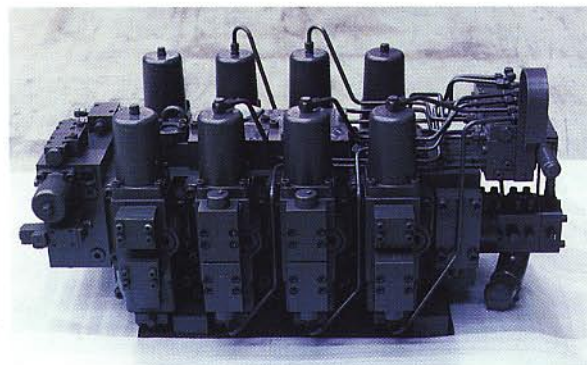




### High on power, low on fuel consumption and emissions

Both machines are equipped with Volvo's 12-litre low-emission engine with Intercooler and turbocharger. Thanks to efficient combustion you get both impressively high power and healthily low emissions. The emission values are below both US and European standards.

The engine has an efficient three-stage filter, water-separating fuel filter and convenient instrument monitoring of oil and coolant.



### Take a look into the heart of the machine – the superb hydraulic system

The hydraulic system in both machines has three working modes so you can always work at maximum efficiency.

Both machines are equipped with three-circuit hydraulic systems. Strength and precision are of top class, and you can easily retrofit the machine with different optional items of equipment.

Naturally, the hydraulic components are also built to handle heavy stresses. The hydraulic cylinders have double piston rod seals and friction-welded piston rods. The oil cooler is of the partial-flow type, which means that you get full cooling capacity even during intensive hydraulic hammer work.



### Hard-wearing and rugged construction

The robust undercarriage has built-in planetary gears and rests on a very rugged track system.

The centre passage is maintenance-free and the swing ring, an important precision component, runs in an oil bath.

The frame beam around the entire carriage body enables the machine to take all kinds of punishment.

In building the digging equipment, we have chosen spherical steel link bearings, which are able to absorb lateral forces. The bearings are sealed and last thousands of hours.



### Superb lift force

The wide, long undercarriage and the full-height counterweight make the machine so stable that the lift force in the HLD mode can be utilized to the full. Naturally, breakout forces are also at the top of the class.



## Sit back, relax and enjoy true comfort

Start by trying the different adjustment options for the seat – you'll soon find the combination of settings that suits you best.

Note that the seat is positioned far forward in the machine for optimum visibility. To further improve visibility, an important safety factor, both machines have dual windshield wipers and large glazed areas without sight-obstructing joints.

The sound level is pleasantly low – in many cases the stereo is louder than the engine.

Heating and ventilation are in a class of their own – the cab is, for example, slightly pressurized to keep out dust.

Instruments and controls are ergonomically designed and situated where they are easiest for you to use. The daily pre-start checkup of all important functions is performed from the cab.

## Mode selector included

With a simple press of a button on the mode selector you can choose between three working modes. In doing so you program the hydraulic system for different working conditions.

- ECO, the economy mode, for work requiring precision.
- CAP for maximum capacity and speed.



*Making light of heavy work – try an ideal operator environment.*

- HLD to increase the pressure in the system by about 12%. The digging and lifting forces are increased to a corresponding degree.

## Float position is standard

A patented solution that gives you a number of advantages. Topsoil stripping from bedrock is easier, for example, because the bucket follows the irregularities in the ground. Wear is



reduced, and less vibration is transmitted to the cab.

Furthermore, capacity increases thanks to the fact that no hydraulic power is needed to lower the boom.

## Shorter swing radius

The counterweight builds on height and not on length, a solution that enables you to work effectively in confined areas. The muffler has also been incorporated in the counterweight.

## Choose the right equipment

For the Volvo EC450, you can choose our tried-and-tested Heavy Duty hydraulic quickfit with safe two-hand release.

A wide range of accessories helps you to customize the machine for the work at hand. Ripper tooth, hammer plate, rock and general purpose buckets, and several boom and dipper arm lengths are included.

Other options include automatic lubrication (standard on the 650).

## **Consideration is included in the price**

Our philosophy in building construction equipment can be summed up as:  
Technology on human terms. When you choose a Volvo heavyweight, you are choosing more than just high capacity and high technology.

You are choosing machines built with consideration for both man and the environment. You are choosing security in the form of Volvo's service and parts organization.

You have a demanding job and demand results every day.

It's our job to show you consideration, to help you to perform.

Every day.

*Under our policy of continuous product improvement, we reserve the right to change specifications or design without prior notice. Illustrations do not necessarily show standard versions of the machines.*

# **VOLVO**

**Volvo Construction  
Equipment**

Ref.No. 21 1 430 0110  
Printed in Sweden 96.12 -3,0  
Tre Punkter, Göteborg 1996

English  
EXC