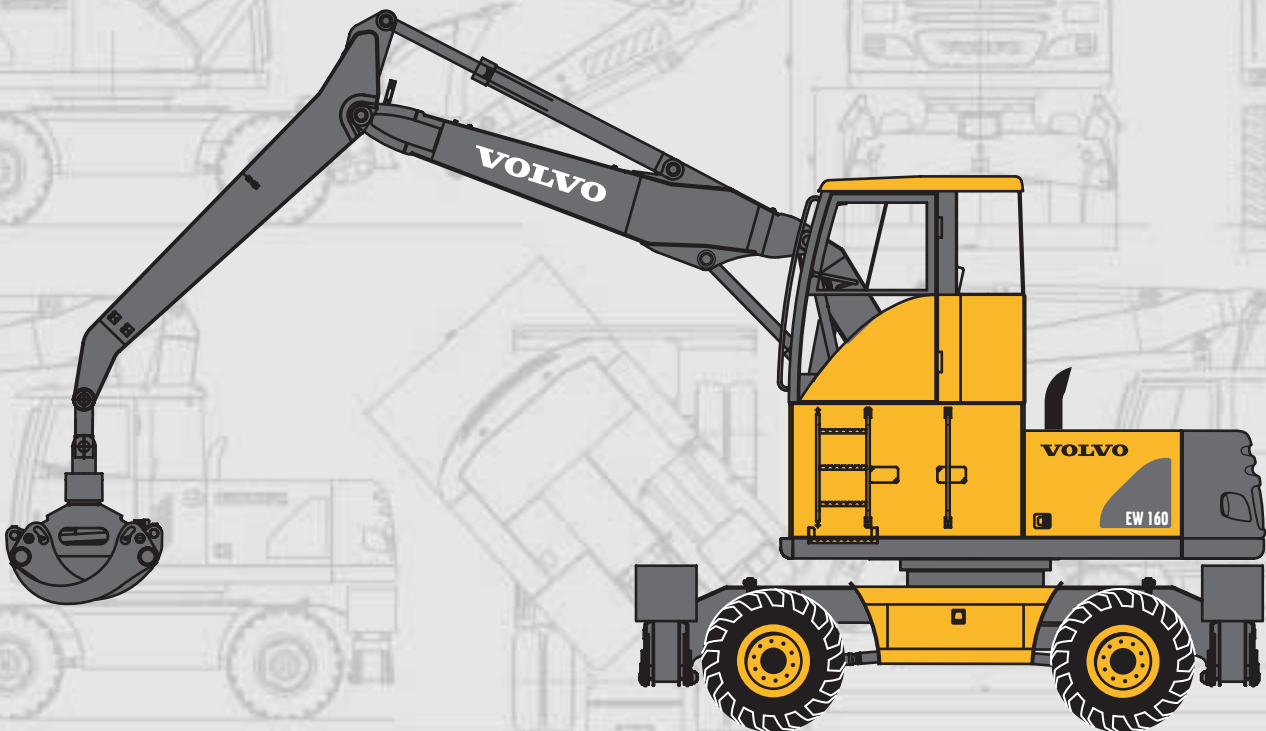


VOLVO EXCAVATOR

EW160

LOG HANDLER



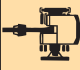
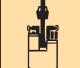
- **Engine power, gross:**
89 kW (121 hp)
- **Operating weight excl. grapple:**
14,0 – 15,8 t
- **Max. height with removable raised cab:**
3710 mm – 4610 mm
- Low emission, turbocharged, diesel engine with direct injection and intercooler
- Load sensing hydraulic system
- Care cab
 - computerized control and warning system
 - ergonomic environment
 - low sound level 73 db(A)
 - filtered air
- Removable raised platform in varying heights of 600 - 1500 mm
- Individually operated outriggers and dozer blade
- High versatility for extra equipment / hydraulics
- High travel speed – 30,0 km/h

VOLVO

SPECIFICATIONS

Data with raised cab (+1000 mm /+ 430 kg)		Monobloc Boom	2-Piece Boom
Operating weight excl. grapple with blade/outriggers		15,270	15,610
Operating weight excl. grapple with 4 outriggers		15,530	15,860
Engine	Model	TD40 KGE	TD40 KGE
	Output: Net	88 kW / 120 hp	88 kW / 120 hp
	Gross	89 kW / 121 hp	89 kW / 121 hp
	Fuel tank capacity	250 l	250 l
Hydraulic System	Hydraulic max. pressure	32 MPa	32 MPa
	Hydraulic max. pressure with Power boost	36 MPa	36 MPa
	Max. flow	235 l/min	235 l/min
	Servo pump pressure	3,5 MPa	3,5 MPa
	Servo pump flow	15 l/min	15 l/min
Performance	Slew speed	10 rpm	10 rpm
	Max. tractive effort	105 kN	105 kN
	Travel speed : road	30 km/h	30 km/h
	: site	8 km/h	8 km/h
	Creep speed	4 km/h	4 km/h
	Turning radius	6,8 m	6,8 m
Electrics	Voltage	24 V	24 V
	Battery	2 x 12 V	2 x 12 V
	Battery capacity	100 Ah	100 Ah
	Alternator	28 V / 55 A	28 V / 55 A

LIFTING CAPACITY (At the quickfit lifting hook/dipper pin, without bucket. Unit: 1 000 kg.)

 Across under-carriage  Along under-carriage	Lifting hook related to ground level	Reach from machine centre																Max. m				
		3,0 m				4,5 m				6,0 m				7,5 m					Max. reach			
		u		d		u		d		u		d		u		d			u		d	
5,0 m monobloc boom 3,0 m dipper arm for grab Outriggers and support blade	6,0 m									2,4	3,7*	2,9	3,7*					1,9	2,6*	2,3	2,6*	6,8
	4,5 m									2,4	4,0	2,8	4,0*	1,6	2,7*	2,0	2,7*	1,6	2,7*	2,0	2,7*	7,5
	3,0 m	6,1	8,0*	7,5	8,0*	3,4	5,4*	4,1	5,4*	2,2	3,8	2,7	4,5*	1,6	2,7	1,9	3,8	1,5	2,5	1,8	2,6*	7,9
	1,5 m					3,1	5,7	3,8	6,9*	2,1	3,7	2,6	5,2	1,5	2,6	1,9	3,7	1,4	2,4	1,7	2,7*	8,0
	0,0 m	5,1	5,6*	5,6*	5,6*	2,9	5,5	3,6	7,8*	2,0	3,6	2,5	5,1	1,5	2,6	1,8	3,6	1,4	2,5	1,7	2,9*	7,8
	-1,5 m	5,1	8,8*	6,5	8,8*	2,9	5,4	3,5	8,0	2,0	3,5	2,4	5,0					1,6	2,7	1,9	3,8	7,2
-3,0 m	5,2	11,0*	6,6	11,0*	2,9	5,4	3,6	7,5*	2,0	3,5	2,4	5,0					1,9	3,3	2,3	4,7	6,3	
5,0 m monobloc boom 3,0 m dipper arm for grab Outriggers front and rear	6,0 m									2,6	3,7*	3,2	3,7*					2,1	2,6*	2,6*	2,6*	6,8
	4,5 m									2,5	4,0*	3,1	4,0*	1,8	2,7*	2,2	2,7*	1,8	2,7*	2,2	2,7*	7,5
	3,0 m	6,5	8,0*	8,0*	8,0*	3,6	5,4*	4,5	5,4*	2,4	4,5*	3,0	4,5*	1,7	3,6	2,2	4,0*	1,6	2,6*	2,0	2,6*	7,9
	1,5 m					3,3	6,9*	4,3	6,9*	2,3	4,9	2,9	5,2*	1,7	3,5	2,1	4,1	1,5	2,7*	1,9	2,7*	8,0
	0,0 m	5,5	5,6*	5,6*	5,6*	3,2	7,5	4,1	7,8*	2,2	4,8	2,8	5,6	1,6	3,4	2,1	4,0	1,5	2,9*	2,0	2,9*	7,8
	-1,5 m	5,5	8,8*	7,3	8,8*	3,1	7,4	4,0	8,0*	2,1	4,7	2,7	5,5					1,7	3,6	2,2	3,9*	7,2
-3,0 m	5,6	11,0*	7,3	11,0*	3,1	7,5*	4,0	7,5*	2,1	4,7	2,7	5,3*					2,0	4,4	2,6	4,8*	6,3	
5,1 m 2-piece boom 3,0 m dipper arm Outriggers and support blade	6,0 m									2,4	3,8*	2,9	3,8*					1,8	3,1	2,2	3,2*	7,0
	4,5 m									3,6	4,0*	4,0*	4,0*	2,3	4,0	2,8	4,1*	1,6	2,8	1,9	3,7*	7,7
	3,0 m					3,3	5,7*	4,1	5,7*	2,2	3,8	2,7	4,7*	1,6	2,7	1,9	3,8	1,4	2,4	1,7	3,0*	8,1
	1,5 m					3,0	5,6	3,7	7,0*	2,1	3,6	2,5	5,2	1,5	2,6	1,8	3,7	1,3	2,3	1,6	3,0*	8,2
	0,0 m					2,8	5,4	3,5	7,8*	1,9	3,5	2,4	5,0	1,4	2,6	1,8	3,6	1,3	2,3	1,6	3,1*	8,0
	-1,5 m	5,0	6,7*	6,4	6,7*	2,8	5,3	3,5	7,8*	1,9	3,5	2,4	5,0	1,4	2,6	1,8	3,4*	1,4	2,6	1,8	3,4*	7,5
-3,0 m	5,0	10,3*	6,4	10,3*	2,8	5,4	3,5	7,1*	1,9	3,5	2,4	5,0					1,8	3,2	2,2	4,4*	6,5	
5,1 m 2-piece boom 3,0 m dipper arm Outriggers front and rear	6,0 m									2,6	3,8*	3,2	3,8*					2,0	3,2*	2,5	3,2*	7,0
	4,5 m									3,9	4,0*	4,0*	4,0*	2,5	4,1*	3,1	4,1*	1,7	3,6	2,2	3,7*	7,7
	3,0 m					3,6	5,7*	4,5	5,7*	2,4	4,7*	3,0	4,7*	1,7	3,6	2,1	4,2*	1,5	3,0*	2,1	3,1*	8,1
	1,5 m					3,3	7,0*	4,2	7,0*	2,2	4,9	2,8	5,3*	1,6	3,5	2,1	4,1	1,4	3,0*	1,8	3,0*	8,2
	0,0 m					3,1	7,5	4,0	7,8*	2,1	4,8	2,7	5,6	1,6	3,4	2,0	4,0	1,4	3,1*	1,9	3,1*	8,0
	-1,5 m	5,4	6,7*	6,7*	6,7*	3,0	7,4	3,9	7,8*	2,1	4,7	2,7	5,5	1,6	3,4*	2,0	3,4*	1,6	3,4*	2,0	3,4*	7,5
-3,0 m	5,4	10,3*	7,2	10,3*	3,0	7,1*	3,9	7,1*	2,1	4,7	2,7	5,1*					1,9	4,2	2,5	4,4*	6,5	

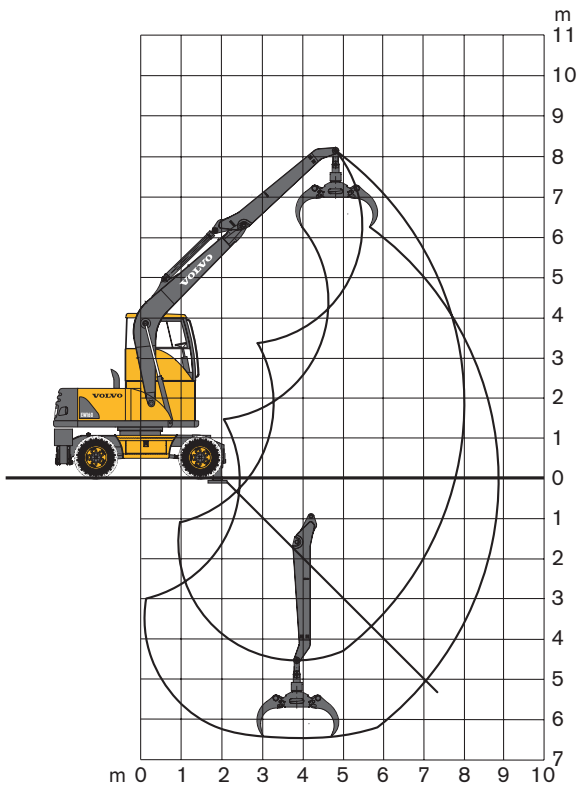
* Load capacity limited by machine's hydraulic lifting capacity.

The above values have been calculated in compliance with ISO standard 10 567. They do not exceed 87 % of hydraulic lifting capacity or 75 % of tipping load, with the machine on firm, level ground.

Working pressure with Power Boost = 36 MPa (360 bar/5 221psi)

DIGGING RANGES

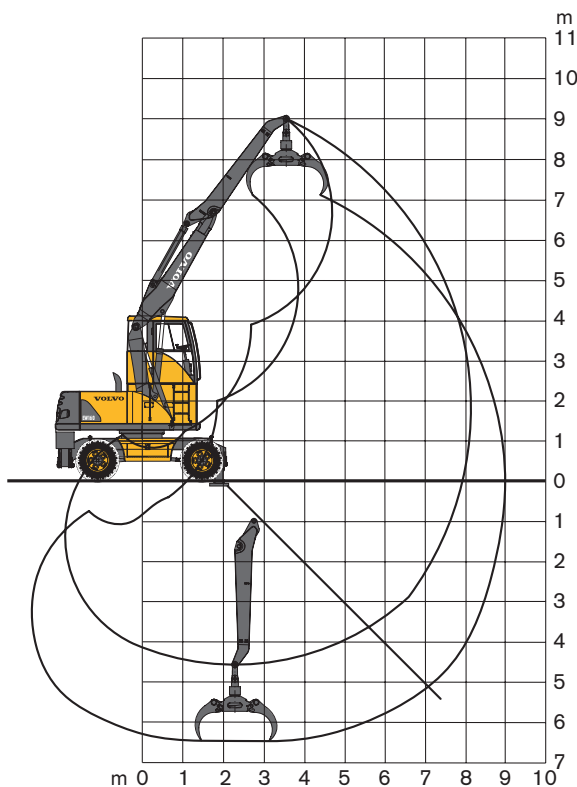
Monobloc boom 5.0 m and dipper arm for grab 3.0 m



Boom type		Monobloc
Boom length	m	5,0
Dipper arm for grab	m	3,0
Max. reach	m	8,1
Max. reach at ground level	m	7,8
Max. digging depth	m	4,6
Max. height ground – pin	m	8,1
Min. front slew radius	m	3,2

* Max. reach depends on grapple type and link.
Stated values are for dipper pin position.

2-piece boom 5.1 m and dipper arm for grab 3.0 m



Boom type		2-piece
Boom length	m	5,1
Dipper arm for grab	m	3,0*
Max. reach	m	8,2
Max. reach at ground level	m	8,0
Max. digging depth	m	4,6
Max. height ground – pin	m	9,0
Min. front slew radius	m	2,9

* Max. reach depends on grapple type and link.
Stated values are for dipper pin position.

STANDARD EQUIPMENT

Engine and electrical system

Contronic – computerized monitoring and alarm system
 Battery disconnecter
 Electrical idling speed
 Electronically controlled pump regulation (SSC)
 3-stage air filter with indicator
 Hour meter
 Tachometer
 Fuel level gauge
 Electric preheating coil
 24 V electrical system
 Well-protected electrical system
 Water separating fuel filter
 2 working lights on the cab

Undercarriage

4-wheel drive
 Oscillating front axle $\pm 9^\circ$
 Axles with hub reduction
 2-circuit travel brakes

Superstructure

Counterweight 3 250 kg

Safety and comfort

Safety bar to prevent accidental actuation via levers and pedals
 Interior lighting in cab
 2 exterior rear-view mirrors
 Ergonomic, operator's seat with seat belt
 Cab heating
 Filtered air intake
 Skylight of special plastic
 Sliding side window in cab door
 Interior sun visor
 Tinted window glass
 Upper windscreen wiper with intermittent function
 Windscreen washer
 Horn
 Glasscrusher hammer
 Silencer
 Oil draining cock on the engine
 Automatic slew holding brake

Hydraulic system

Variable axial-piston pump
 Mode Selector with 3 different modes
 Power Boost
 Wrist type control levers with four switches each
 Hydraulic cylinders with internal end dampening
 Variable motor with pressure control
 Return filter of full flow type 1000 h exchange interval
 Pressure relief system (Servo accumulator)
 Thermostatically controlled cooling fan
 Hydraulic equipment for:
 A. Slope bucket/rotator
 B. Grab/clam shell

Digging equipment

Attachment points for extra hydraulics

Environment

Sound pressure level (L_{pA}): **73 dB(A)**
 Sound power level (L_{WA}): **99 dB(A)**
 Approved acc. EEC guidelines:
 84/532 EEC
 79/113 EEC
 86/662 EEC
 German environmental certification «**low noise**»
 RAL-UZ53

ALTERNATIVE EQUIPMENT

Undercarriage

Twin wheels 10.00–20
 Twin wheels 10.00–20 solid
 Single wheels 18R-19.5
 Single wheels 600/40-22,5
 Dozer blade in front, and two outriggers rear
 Support blade, rear
 4 outriggers
 Grab bucket holder

Digging equipment

Booms
 5,0 m monobloc
 5,1 m 2-piece boom

Dipper arms

3,0 m dipper arm for grab

Cabin

Removable raised platform in varying heights of 600 - 1500 mm

OPTIONAL EQUIPMENT (Standard on certain markets)

Engine and electrical system

Diesel-powered cab and engine heater with digital timer
 Electric engine heater (220 V)
 Auto idling
 Extra headlights on boom
 1 working light rear (halogen)
 Protective net in front of the cooler
 Alternator 80 A
 Coolant filter
 Extra fuel filter

Undercarriage

Stone protection rings
 Mud guards
 Tool box
 Rear axle with limited slip
 Rear axle with drum brake
 Rear axle with limited slip and drum brake

Safety and comfort

Protective net for windscreen
 Protective cab roof (FOGS ISO 10 262-approved)
 Hose rupture valve on boom cylinder incl. overload alarm

Extra hose rupture valve – dipper arm cylinder
 Rotating warning beacon
 Electrically powered fuelling pump, 30 l/min, with overfilling protection
 Ergonomic, electrically heated operator's seat with seat belt
 Ergonomic, electrically heated operator's seat with air suspension and seat belt
 Sun visor, rear window and skylight
 Lower windscreen wiper with intermittent function
 Air conditioning
 Radio with tape player

Tool kit
 Travel alarm
 Cruise control

Hydraulic system

Float position on boom
 Biodegradable hydraulic oil

Under our policy of continuous product improvement, we reserve the right to change specifications and design without prior notice. The illustrations do not necessarily show the standard version of the machine.

VOLVO

**Volvo Construction
 Equipment**

Ref. No. 21 1 433 1103 English global
 Printed in Germany 2001.05 EXC
 Volvo, Konz