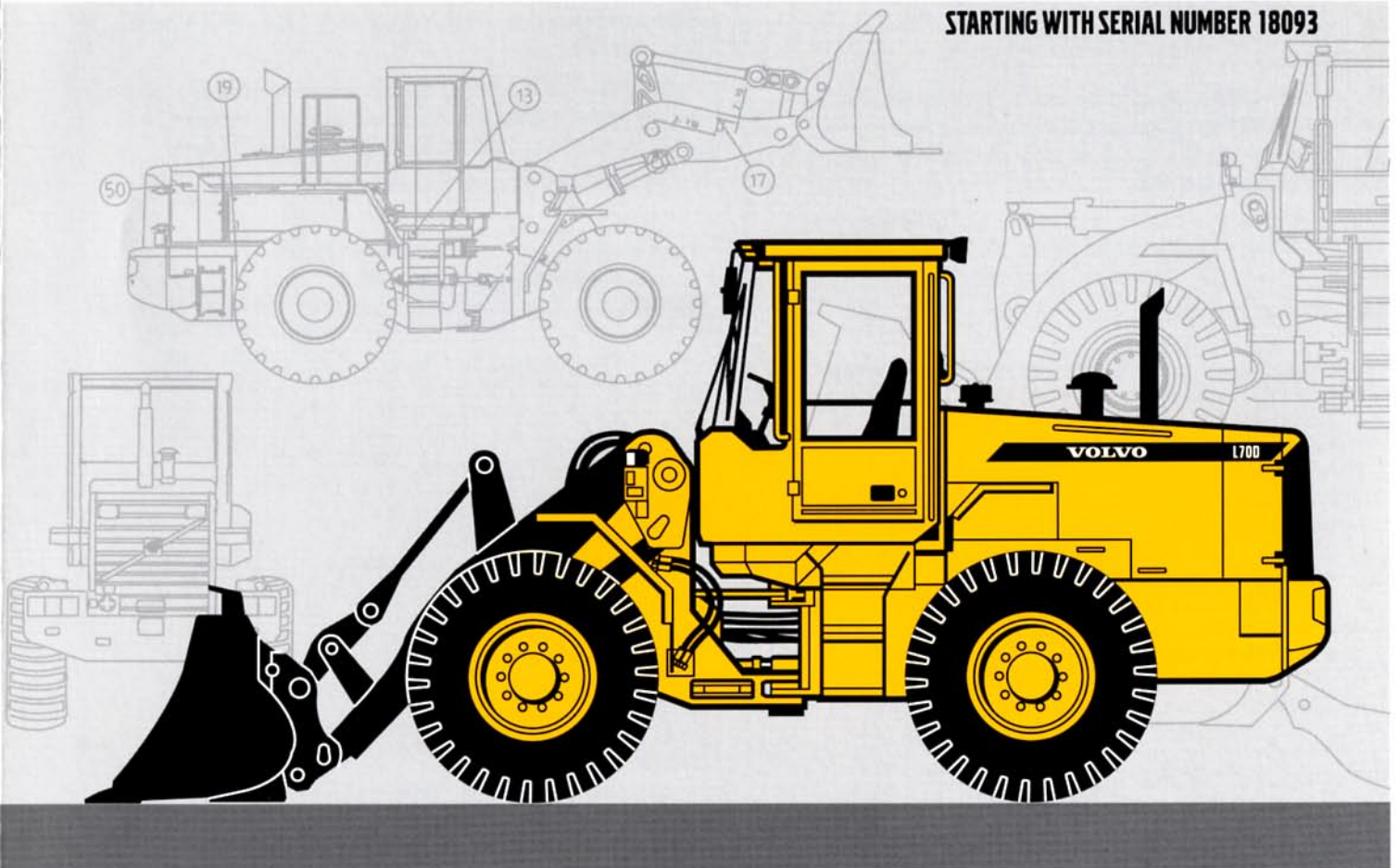


## VOLVO WHEEL LOADER

# L70D

STARTING WITH SERIAL NUMBER 18093



- **Engine output SAE J1995:**  
gross 96 kW (130 hp)  
ISO 9249, SAE J1349:  
net 91 kW (124 hp)
  - **Operating weight:** 10,9–12,2 t  
24,000–26,900 lb
  - **Bucket volume:** 1,6–5,0 m<sup>3</sup>  
2.1–6.5 yd<sup>3</sup>
  - **Volvo high-performance, low-emission engine**
    - Excellent low rpm performance
    - Meets all known exhaust emission regulations for offroad vehicles
  - **Volvo transmission with APS II**
    - 2nd generation Automatic Power Shift with mode selector
    - Optimizes performance
  - **Wet disc brakes**
    - Fully sealed, oil-circulation cooled, outboard mounted
  - **Torque Parallel Linkage**
    - High breakout torque throughout the working range
    - Excellent parallel lift-arm action
  - **Care Cab II**
    - Pressurized cab with high comfort and safety
  - **Contronic II monitoring system**
  - **Load-sensing working hydraulics and steering system**
  - **Pilot-operated working hydraulics**
- Optional equipment**
- Power take-off for hydraulically powered attachments
  - Hydraulic attachment bracket
  - Boom Suspension System
  - Comfort Drive Control
- Other options, see back page**

# VOLVO



## SERVICE

The Contronic II monitoring system provides information on machine condition, routine maintenance schedules and minimizes time required for troubleshooting.

**Service accessibility:** Large, easy-to-open engine access doors with gas struts. Swing-out radiator grille and radiator.

Refill capacities .. l	US gal	Refill capacities .. l	US gal		
Fuel tank .....	190	50.2	Gearbox .....	17	4.5
Engine coolant ...	40	10.6	Engine oil .....	16	4.2
Hydraulic tank .....	65	17.2	Axle front / rear ...	24/24	6.3/6.3



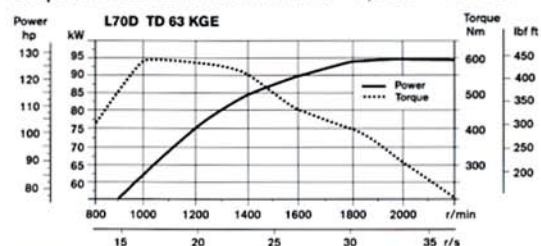
## ENGINE

The engine offers high torque and quick response at low rpm also under full load. The machine operates at low engine speeds, which contributes to good fuel economy, less noise, less wear and longer life.

**Engine:** High performance, low emission 6-cylinder, in-line, direct-injected, turbocharged, intercooled 4-stroke diesel engine with wet replaceable cylinder liners.

**Air cleaning:** three-stage.

Engine Volvo TD 63 KGE		
Max power at .....	35 r/s	2 100 r/min
SAE J1995 gross .....	96 kW	130 hp
ISO 9249, SAE J1349 net ...	91 kW	124 hp
With optional noise reduction kit EU2002 .....	93 kW	126 hp
Rated power at .....	36,6 r/s	2 200 r/min
SAE J1995 gross .....	94 kW	128 hp
ISO 9249, SAE J1349 net ...	89 kW	122 hp
With optional Noise reduction kit EU 2002 .....	92 kW	125hp
Max. torque at .....	18,3 r/s	1 100 r/min
SAE J1995 gross .....	595 Nm	439 lbf ft
ISO 9249, SAE J1349 net ...	590 Nm	435 lbf ft
Displacement .....	5,48 l	334 in <sup>3</sup>



## ELECTRICAL SYSTEM

Contronic II monitoring system with increased function control and capability to store data for analysis. Electrical system with circuit boards, well protected by fuses. The system is pre-wired for installation of optional equipment.

**Central warning system:** Central warning light for the following functions (buzzer with gear engaged): Engine oil pressure, transmission oil temperature, brake pressure, parking brake applied, steering system pressure, coolant temperature, transmission oil temperature, hydraulic oil temperature, overspeeding in engaged gear, computer malfunction.

Voltage .....	24 V
Batteries .....	2x12 V
Battery capacity .....	2x105 Ah
Cold cranking capacity, ea .....	690 A
Reserve capacity, ea .....	185 min
Alternator rating .....	1 680 W / 60 A
Starter-motor output .....	5,4 kW 7.3 hp



## DRIVETRAIN

The drivetrain and working hydraulics are well-matched to each other and of reliable design. Quick acceleration boosts productivity. Volvo system-compatible design facilitates servicing.

**Torque converter:** Single-stage

**Transmission:** Volvo Countershaft-type transmission with single-lever control. Fast and smooth directional and speed shifting.

**Shifting system:** Volvo Automatic Power Shift (APS II) with mode selector.

**Axes:** Volvo axles, fully floating with shafts and planetary-type hub reductions. Cast-steel axle housing. Fixed front axle and oscillating rear axle. 100% differential lock on front axle.

Transmission .....	Volvo HT 90			
Torque multiplication .....	2,85:1			
Speeds, max. forward/reverse ..	High range	Low range (Opt.)		
	km/h	mph	km/h	mph
1 .....	7,0	4.3	1,9	1.2
2 .....	14,0	8.7	3,7	2.3
3 .....	26,0	16.2	7,3	4.5
4 .....	44,0	27.3	13,6	8.5
Measured with tires .....	20.5 R25* L2			
Front axle .....	Volvo / AWB 15			
Oscillation, rear axle .....	±13°			
Ground clearance at 13° oscillation .....	420 mm	16.5 in		



## BRAKE SYSTEM

A simple and reliable brake system that ensures high availability and safety. Self-adjusting oil circulation-cooled wet disc brakes give long service intervals.

**Service brakes:** Volvo, dual-circuit system with nitrogen-charged accumulators. Fully hydraulically operated, enclosed, internal oil-circulation cooled disc brakes. Transmission declutch during braking can be preselected by a switch on the instrument panel. Brake performance test included in the Contronic II system.

**Parking brake:** Mechanically operated drum brake on front axle input shaft. Electro-hydraulically operated (option).

**Secondary brake:** Either the service brake circuits or the parking brake fulfills the safety requirements.

**Standards:** The brake system complies with the requirements of ISO 3450, SAE J1473.

Number of discs/wheel .....	1
Number of accumulators .....	3
Volume, each .....	0,5 l 30.5 in <sup>3</sup>

## OPERATIONAL DATA, VOLVO L70D\*\*

	GENERAL PURPOSE						GRADING	LIGHT MATERIAL		
Tires 20.5 R25	Bolt-on edge	Bolt-on edge	Bolt-on edge	Teeth	Teeth	Teeth		Bolt-on edge	Bolt-on edge	Bolt-on edge
Volume, heaped ISO/SAE	m <sup>3</sup> 1,9	1,9	1,7	1,6	1,8	1,8	1,6	3,1	3,1	5,0
	yd <sup>3</sup> 2,5	2,5	2,2	2,1	2,4	2,4	2,1	4,1	4,1	6,5
Volume at 110% fill factor	m <sup>3</sup> 2,1	2,1	1,9	1,8	2,0	2,0	–	3,4	3,4	5,5
	yd <sup>3</sup> 2,7	2,7	2,5	2,4	2,6	2,6	–	4,5	4,5	7,2
Static tipping load, straight	kg 8 730	8 260	8 820	8 510	8 890	8 390	7 360	8 270	7 820	7 810
	lb 19,250	18,210	19,440	18,760	19,600	18,500	16,230	18,230	17,240	17,220
at 35° turn	kg 7 810	7 370	7 900	7 600	7 970	7 490	6 570	7 370	6 950	6 900
	lb 17,220	16,250	17,420	16,760	17,570	16,510	14,480	16,250	15,320	15,210
at full turn	kg 7 540	7 100	7 630	7 330	7 690	7 230	6 330	7 110	6 690	6 640
	lb 16,620	15,650	16,820	16,160	16,950	15,940	13,960	15,670	14,750	14,640
Breakout force	kN 86,9	79,4	92,5	88,8	91,9	83,6	61,6	65,7	61,1	53,2
	lbf 19,540	17,850	20,800	19,960	20,660	18,790	13,850	14,770	13,740	11,960
A	mm 7 120	7 220	7 050	7 270	7 240	7 340	7 460	7 480	7 570	7 790
	ft in 23'4"	23'8"	23'1"	23'10"	23'9"	24'1"	24'6"	24'6"	24'10"	25'7"
E	mm 990	1 090	920	1 140	1 110	1 200	1 300	1 340	1 430	1 650
	ft in 3'3"	3'7"	3'0"	3'9"	3'8"	3'11"	4'3"	4'4"	4'8"	5'5"
H *)	mm 2 880	2 820	2 930	2 790	2 810	2 740	2 580	2 650	2 590	2 440
	ft in 9'6"	9'3"	9'7"	9'2"	9'3"	9'0"	8'6"	8'8"	8'6"	8'0"
L	mm 5 060	5 120	5 000	5 060	5 070	5 120	4 540	5 220	5 290	5 490
	ft in 16'7"	16'10"	16'5"	16'7"	16'7"	16'10"	14'11"	17'2"	17'4"	18'0"
M *)	mm 960	1 030	910	1 080	1 050	1 130	1 080	1 230	1 310	1 500
	ft in 3'2"	3'5"	3'0"	3'7"	3'6"	3'9"	3'6"	4'0"	4'4"	4'11"
N *)	mm 1 540	1 580	1 520	1 610	1 590	1 630	1 490	1 580	1 620	1 670
	ft in 5'1"	5'2"	5'0"	5'3"	5'3"	5'4"	4'11"	5'2"	5'4"	5'6"
V	mm 2 500	2 500	2 500	2 500	2 500	2 500	2 500	2 550	2 550	2 650
	ft in 8'2"	8'2"	8'2"	8'2"	8'2"	8'2"	8'2"	8'4"	8'4"	8'8"
a, clearance circle	mm 11 130	11 170	11 100	11 200	11 190	11 240	11 510	11 370	11 410	11 640
	ft in 36'6"	36'8"	36'5"	36'9"	36'9"	36'10"	37'9"	37'4"	37'5"	38'2"
Operating weight	kg 11 330	11 570	11 290	11 470	11 270	11 530	11 450	11 510	11 750	12 040
	lb 24,980	25,510	24,890	25,290	24,850	25,420	25,240	25,380	25,900	26,540

\*) at 45° dump angle

\*\*) attachment data applies only to original Volvo attachments

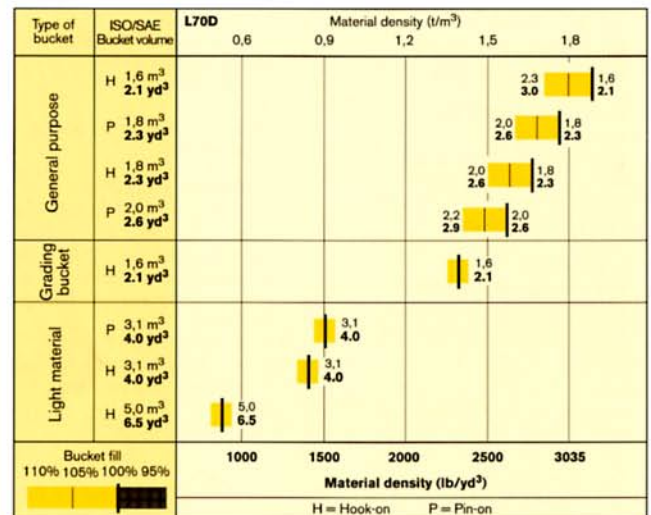
### BUCKET SELECTION CHART

The choice of bucket is determined by the density of the material and the expected bucket fill factor. The actual bucket volume is often larger than the rated capacity, due to the TP linkage features: • Open bucket design. • Very good roll back in positions. • Good bucket fill performance.

Example: Sand and gravel. Fill factor ~ 105%. Density 2865 lb/yd<sup>3</sup>. Result: The 2.3 yd<sup>3</sup> bucket carries 2.4 yd<sup>3</sup>. For optimum stability, always consult the bucket selection chart.

Material	Bucket fill %	Material density		ISO/SAE bucket volume		Actual volume	
		t/m <sup>3</sup>	lb/yd <sup>3</sup>	m <sup>3</sup>	yd <sup>3</sup>	m <sup>3</sup>	yd <sup>3</sup>
Earth/Clay	~ 110	~ 1,8	~ 3035	1,6	2,1	~ 1,8	~ 2,3
		~ 1,6	~ 2695	1,8	2,3	~ 2,0	~ 2,6
		~ 1,4	~ 2360	2,0	2,6	~ 2,2	~ 2,9
Sand/Gravel	~ 105	~ 1,9	~ 3200	1,6	2,1	~ 1,7	~ 2,2
		~ 1,7	~ 2865	1,8	2,3	~ 1,9	~ 2,5
		~ 1,5	~ 2530	2,0	2,6	~ 2,1	~ 2,7
Aggregate	~ 100	~ 1,9	~ 3200	1,6	2,1	~ 1,6	~ 2,1
		~ 1,7	~ 2865	1,8	2,3	~ 1,8	~ 2,3
		~ 1,6	~ 2695	2,0	2,6	~ 2,0	~ 2,6
Rock	≤ 100	~ 1,7	~ 2865	1,6	2,1	~ 1,6	~ 2,1

The size of rock buckets is designed for optimal penetration and filling capability rather than the density of the material.



### SUPPLEMENTAL OPERATING DATA

No additional counterweight available	Tires				Add extended fenders	
	17.5 R25* L2		17.5-25* L3			
Width over tires	mm	in	-90	3.5	+60	2.4
Ground clearance	mm	in	-60	2.4	+25	1.0
Operating weight	kg	lb	-330	730	+160	355
Tipping load, full turn	kg	lb	-190	420	+80	175
					+200	440
					+245	540

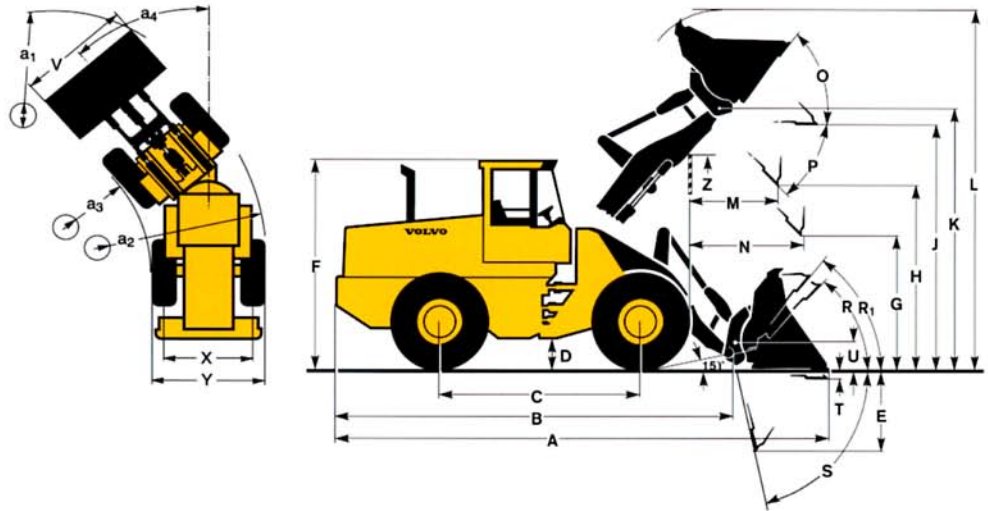
## OPERATIONAL DATA & DIMENSIONS

Tires: 20.5 R25\* L2

B	3 920 mm	12'10"
C	2 840 mm	9'4"
D	430 mm	1'5"
F	3 210 mm	10'6"
G	2 135 mm	7'0"
J	3 590 mm	11'9"
K	3 880 mm	12'9"
O	56°	
P	45°	
R	44°	
R <sub>1</sub> *	48°	
S	78°	
T	50 mm	0'2"
U	440 mm	1'5"
X	1 860 mm	6'1"
Y	2 390 mm	7'10"
Z	3 170 mm	10'5"
a <sub>2</sub>	5 100 mm	16'9"
a <sub>3</sub>	2 710 mm	8'11"
a <sub>4</sub>	±40°	

\* Carry position SAE

Where applicable, specifications and dimensions are in accordance with ISO 7131, SAE J732, ISO 7546, SAE J742, ISO 5998, SAE J818, and ISO 8313.

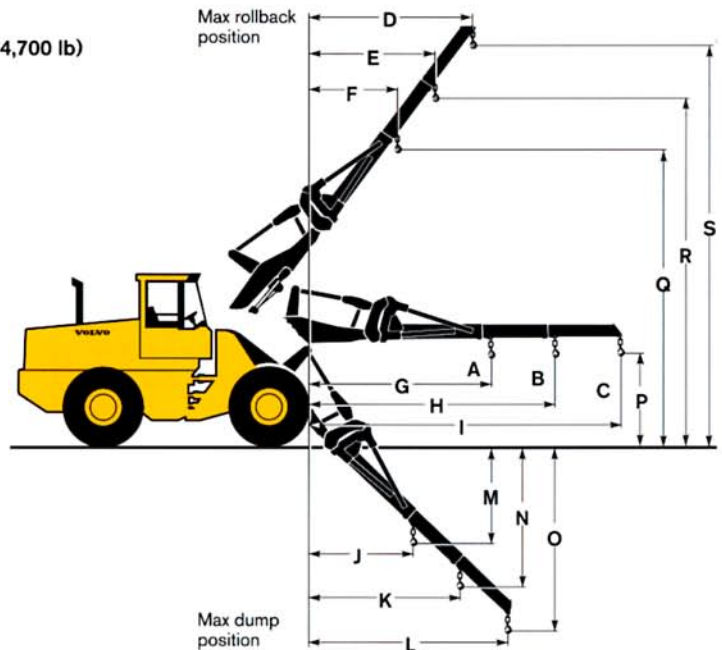


## MATERIAL HANDLING ARM (Hook on)

Tires: 20.5 R25\* L2

A	1 620 kg	3572 lb
B	1 280 kg	2822 lb
C	1 050 kg	2315 lb
D	2 510 mm	8'3"
E	1 940 mm	6'4"
F	1 410 mm	4'8"
G	3 260 mm	10'8"
H	4 300 mm	14'1"
I	5 430 mm	17'10"
J	1 020 mm	3'4"
K	1 370 mm	4'6"
L	1 760 mm	5'9"
M	2 190 mm	7'2"
N	3 170 mm	10'5"
O	4 230 mm	13'11"
P	1 500 mm	4'11"
Q	5 320 mm	17'5"
R	6 210 mm	20'4"
S	7 190 mm	23'7"

Order No: 92007  
Operating weight: 11 200 kg (24,700 lb)



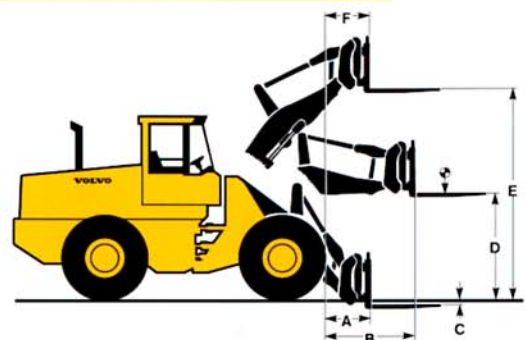
## PALLET FORK (Hook on)

Tires: 20.5 R25\* L2

A	840 mm	2'9"
B	1 560 mm	5'1"
C	80 mm	0'3"
D	1 830 mm	6'0"
E	3 730 mm	12'3"
F	670 mm	2'2"

Fork tine order no. (R/L): 93525/93526  
Length: 1 200 mm 3'11"  
Fork frame order no: 80041  
Width: 1 500 mm 4'11"  
Rated operating load\*: 4 290 kg 9,460 lb  
at load center distance: 600 mm 2'0"  
Operating weight: 11 250 kg 24,800 lb  
Incl. optional counterweight

\* acc. std EN 474-3, firm and level ground





## STEERING SYSTEM

Low effort steering provides fast work cycle times. Power-efficient system provides good fuel economy, good directional stability and smooth ride.

**Steering system:** Load-sensing hydrostatic articulated steering.

**System supply:** The steering system has priority feed from a load-sensing axial piston pump.

**Pump:** Double variable-flow axial piston pump.

**Cylinders:** Two double-acting cylinders.

Steering cylinders .....	2		
Bore .....	63 mm	2.48 in	
Piston rod diameter .....	40 mm	1.57 in	
Stroke .....	370 mm	14.57 in	
Relief pressure .....	21 MPa	3046 psi	
Max. flow .....	80 l/min	21.13 US gpm	
Articulation .....	±40°		



## CAB

Care Cab II with easy entry and wide door opening. Inside of cab lined with noise-absorbent materials. Sound and vibration suppressing suspension. Good all-round visibility through large glass areas. Curved front windshield of green-tinted glass. Ergonomically positioned controls and instruments permit a comfortable operating position.

**Instrumentation:** All important information is centrally located in the operator's field of vision. Center console display for Contronic II monitoring system.

**Heater and defroster:** Heating element with filtered fresh air and fan with four speeds. Defroster vents for all window areas.

**Operator's seat:** Operator's seat with adjustable suspension and retractable seatbelt. The seat is mounted on a bracket on the rear cab wall. The forces from the retractable seatbelt are absorbed by the seat rails. Meets ISO/DIS 7096-1997.

**Standard:** Tested and approved according to the following standards: ROPS (ISO/CD 3471, SAE J1040), FOPS (ISO 3449, SAE J231). Complies with "Overhead guards for rider lift trucks" (ISO 6055) and "Operator Restrain System" (SAE J386).

Emergency exits .....	2		
Sound level in cab ISO 6396 .....	71 dB (A)		
External sound level			
According to ISO 6395 .....	LwA 106 dB (A)		
According to EU 2002 requirements ...	LwA 104 dB (A)		
According to Blue Angel .....	LwA 101 dB (A)		
Ventilation .....	9 m <sup>3</sup> /min	318 ft <sup>3</sup> /min	
Heating capacity .....	11 kW	37,500 Btu/h	
Air conditioning (optional) .....	8 kW	27,300 Btu/h	



## HYDRAULIC SYSTEM

The Load-Sensing hydraulic system delivers the exact amount of oil required for the function used. At the same time, complete control of the hydraulics is achieved throughout the entire lifting range. The high capacity of the pumps results in quick and smooth movements.

**System supply:** One load-sensing double axial piston pump with variable displacement. The steering function always has priority.

**Valves:** Double-acting 2-spool valve. The main valve is controlled by a 2-spool pilot valve.

**Lift function:** The valve has four positions: raise, hold, lower and float position. Inductive/magnetic automatic boom kickout can be switched on and off and is adjustable to any position between maximum reach and full lifting height.

**Tilt function:** The valve has three functions: rollback, hold and dump. Inductive/magnetic automatic bucket positioner, can be switched on and off.

**Cylinders:** Double-acting cylinders for all functions.

**Filter:** Full-flow filtration through 20 micron (absolute) filter cartridge.

Axial piston pump			
Relief pressure .....	26,0 MPa	3771 psi	
Flow .....	160 l/min	42.3 US gpm	
at .....	10 MPa	1450 psi	
and engine speed .....	36,7 r/s	2 200 rpm	
Pilot system			
Relief pressure .....	3,0 MPa	435 psi	
Cycle times			
Raise* .....	5,4 s		
Dump* .....	1,1 s		
Lower, empty .....	3,0 s		
Total cycle time .....	9,5 s		

\* with load as per ISO 5998 and SAE J818



## LIFT-ARM SYSTEM

The TP Linkage combines high breakout torque throughout the working range with parallel lift-arm action. These features together with high lift height and long reach make the lift-arm system equally as good in bucket loading as in work with fork attachments and material handling arms.

Lift cylinder .....	2		
Bore .....	100 mm	3.9 in	
Piston rod diameter .....	70 mm	2.8 in	
Stroke .....	734 mm	28.9 in	
Tilt cylinder .....	1		
Bore .....	150 mm	5.9 in	
Piston rod diameter .....	80 mm	3.1 in	
Stroke .....	440 mm	17.3 in	

## STANDARD EQUIPMENT

### Engine

High performance, low emission  
Volvo TD 63 KDE  
Dual fuel filters  
Cold starting aid  
Air cleaner, dry type, dual element,  
exhaust-aspirated precleaner  
Coolant level, sight gauge  
Muffler, spark arresting  
Coolant filter  
Fan guard  
Primary fuel filter with water  
separator

### Electrical System

24 V – prewired for optional  
accessories  
Alternator, 24 V, 60 A  
Battery disconnect switch  
Gauges:  
• Fuel gauge  
• Engine coolant temperature  
gauge  
• Transmission oil temperature  
gauge  
• Hourmeter  
Horn, electric  
Instrument panel with symbols  
Lights:  
• Driving (2-front), halogen head  
lights with high/low beam  
• Parking lights  
• Stop/tail combination (2 rear)  
• Turn signals with separate hazard  
warning switch  
• Halogen working lights  
(2 front/2 rear)  
• Instrument lighting  
• Reverse alarm (SAE J994)

### Contronic II

#### Monitoring System, ECU with log and analysis system

Contronic II display  
Engine shutdown to idle  
• High engine coolant temperature  
• Low engine oil pressure  
• High transmission oil temperature  
Neutral start feature  
Brake performance test function  
Test function for warning and  
indicator lights  
Warning and indicator lights:  
• Alternator malfunction  
• Oil pressure, engine  
• Oil pressure, transmission  
• Brake pressure  
• Parking brake applied  
• Hydraulic oil level  
• Hydraulic oil temperature  
• Axle oil temperature  
• Primary steering  
• High beams  
• Turn signals  
• Rotating beacon  
• Preheating coil  
• Differential lock (front axle)  
• Coolant temperature  
• Transmission oil temperature  
• Brake charging  
• Air cleaner restriction  
• Hydraulic oil level  
• High speed/gear  
• Overspeed engine

### Drivetrain

Transmission: modulated with single  
lever control, Automatic Power  
Shift (APS II) with mode selector  
and operator-controlled declutch  
Forward and reverse switch on  
hydraulic control console  
Tires 17.5R25 L2  
100% differential lock, front axle

### Brake System

Wet, internal oil-circulation cooled,  
outboard-mounted disc brakes,  
4-wheel, dual circuit brake system  
Secondary brake system,  
accumulator supplied  
Parking brake

### Cab

ROPS (SAE J1040) (ISO 3471),  
FOPS (SAE J231) (ISO 3449).  
Acoustical lining  
Ashtray  
Cigarette lighter  
Cab access steps and handrails  
Dual service brake pedals  
Door lockable (left side)  
Heater/defroster/pressurizer  
with four speed blower fan  
Filtered air  
Floor mat  
Dome light  
2 interior rearview mirrors  
2 exterior rearview mirrors  
Openable window, right-hand side  
Steering wheel, adjustable tilt and  
telescopic, adjustable lever  
console  
Tinted safety glass  
Retractable seat belt (SAE J386)  
Ergonomically designed operator's

seat with adjustable suspension  
Storage compartment  
Sun visor  
Beverage holder  
Windshield wiper, front and rear  
Intermittent wiper, front  
Windshield washer, front and rear

### Hydraulic System

Main valve, 2-spool, pilot-operated  
Pilot valve, 2-spool  
Boom-lowering, stopped engine  
Dual axial piston pump  
Bucket lever detent  
Hydraulic control lever safety latch  
Hydraulic pressure test ports, quick  
connect  
Hydraulic fluid level, sight gauge  
Hydraulic oil cooler  
Bucket leveler, automatic with posi-  
tion indicator, adjustable  
Boom lever detents  
Boom kickout, automatic, adjustable  
Hydraulic pressure test port, quick  
connect

### External Equipment

Attachment bracket, hydraulic, with  
separate locking system  
Isolation mounts: cab, engine, trans-  
mission, radiator  
Lifting and tie-down lugs  
Side panels, engine hood  
Steering frame lock  
Vandalism lock, provision for:  
batteries, engine oil  
Drawbar hitch  
Fenders front/rear  
Fuel fill strainer

## OPTIONAL EQUIPMENT (Standard in certain markets)

### Service and Maintenance

Tool box  
Automatic lube system

### Engine

Coolant pre-heater (120 V/750 W)  
or (240 V/750 W)  
Pre-cleaner, oil bath type  
Pre-cleaner, turbo type

### Electrical System

Alternator 100 A  
Working lights front, extra  
Working lights rear, extra  
Rotating beacon, amber with  
collapsible mount

### Drivetrain

Transmission, 8-speed  
Limited slip differential, rear  
Limited slip differential, front and  
rear

### Cab

Installation kit for radio  
AM/FM radio with tape deck

Heated operator seat  
Armrest, left side  
Seat belt, 3 in, extended length  
Sliding window, right side  
Hand throttle  
Air suspended operator's seat  
Air conditioner  
Noise reduction kit, cab  
Parking brake alarm  
Open ROPS version  
Sunblinds  
Ventilation filter for asbestos  
environment

### Hydraulic System

Hydraulic control, 3rd function  
Hydraulic control, 4th function  
Hydraulic controls, 5th/6th function  
Hydraulic power take off, heavy duty  
Hydraulic single-acting lifting  
function  
Boom Suspension System  
Biodegradeable hydraulic fluid  
Lever detent 3rd function  
Arctic kit  
Single lever control

### External Equipment

Fenders, axle-mounted rear  
Fender wideners

### Other Equipment

Comfort Drive Control (CDC)  
Slow moving vehicle sign  
Secondary steering  
Electro-hydraulically operated  
parking brake

### Tires

20.5-25, 20.5R25\*, 555/70 R25

### Protective Equipment

Guards for:  
• Headlights  
• Rear working lights  
• Rear lights  
• Windshield  
• Air cleaner restriction  
Cover plate under cab  
Belly guards, front and rear

### Attachments

Buckets:  
• Straight with/without teeth  
• Spade nose with/without teeth  
• High tip  
• Light material  
Three piece, reversible bolt-on  
cutting edge  
Bolt-on and weld-on bucket teeth  
Log grapples  
Fork equipment  
Material handling arm  
Diagonal snow blade  
Broom  
Attachment rib kit

*Under our policy of continuous product improvement, we reserve the right to change specifications and design without prior notice. The illustrations do not necessarily show the standard version of the machine.*

# VOLVO

Volvo Construction Equipment  
North America Inc.

One Volvo Drive, Asheville, N.C. 28803-3447  
www.VolvoCE.com

Ref. No. 22 2 669 2319  
Printed in USA 06/01- 10,0