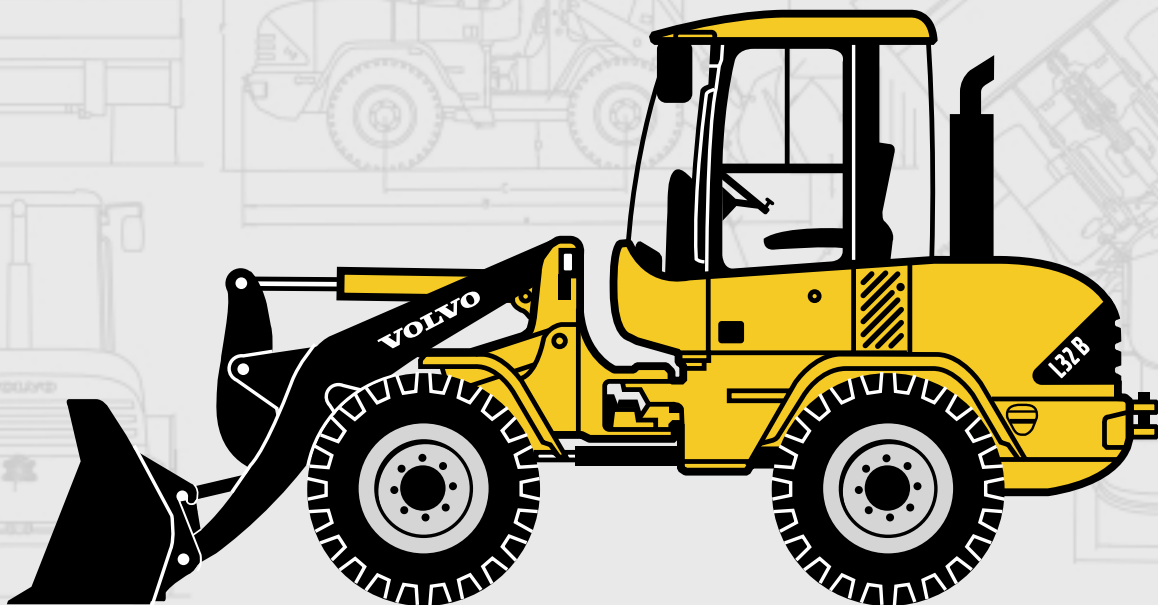


VOLVO COMPACT WHEEL LOADER

L32B



- **Gross Power:**
SAE J1995 51/69 kW/hp
Net Power:
SAE J1349 49/66 kW/hp
- **Operating Weight:**
5,5-5,6 t
- **Bucket Capacities:**
1,0-1,5 m³
- **High-performance, low environmental impact diesel engine:** quiet, low emissions, economical fuel consumption.
- **Hydrostatic drive with significant advantages:**
 - Easy to operate due to automatic drive facility.
 - Maintains high drawbar pull even when working hydraulics are engaged.
 - Advantageous hydrostatic brakes, wear-free and safe.
- **Powerful Z-bar loader-linkage with two lifting cylinders:**
 - High breakout force and lifting capacity in bucket applications.
 - Excellent fork-lift capacity.
- **Operator-selected 100% differential lock on both axles** to give optimum traction.
- **Standard hydraulic quick-change coupling:** Various tried-and-tested attachments for a wide range of applications.
- **Purpose designed cab comfort:**
 - Electronic Information System.
 - Multi-function lever.

VOLVO

A wheel loader of the compact class from Volvo

Compact wheel loader L32B



First-class operator comfort

Mount your new Volvo loader and start into a successful work day. Your compact machine from Volvo makes it easy for you. Its spacious, comfortable cabin is entirely designed for precise and fatigue free work: excellent air conditioning, adjustable operator's seat and individually adjustable steering column. Clearly arranged dash board with supporting electronics (Electronic Information System).

Innovative Design

The new Volvo wheel loaders are something to be proud of. Their unmistakable rounded silhouette is pointing the way for a completely new generation of construction equipment. The attractive appearance is combined with function: Rounded rear section and 3-D-panorama cabin with extremely narrow frame parts enable an all-round view which has never before been achieved - for additional safety at work. With their compact dimensions and the selectable 100% differential lock these machines can easily cope with difficult terrain.



Uncompromising performance

Well-proven technology, high quality components and a well thought-out design: engine and central maintenance points in a service-friendly transverse arrangement. Powerful Z-bar loader linkage with excellent lifting capacities and breakout forces. Durable hydrostatic travel drive for constant power. Strong diesel engines with high power reserves. Exemplary environmental features: excellent fuel economy, operation with low exhaust and reduced noise emissions. Approved by the German «Blue Angel» environmental seal for low noise machine operation.



1 Membrane key pad with symbols and integrated LEDs

- Entry and retrieval of basic operating data
- Functional keys for various operating functions
- Anti-theft function via numeric code

3 6-digit LED-display

- Indication of operating data

2 Colour-coded LED-illuminated symbols

- as controls
- as warning symbols combined with acoustic signal

4 Analog LED-information

- Fuel level
- Engine temperature
- Drive system oil temperature



Z-bar loader-linkage - robust multi-purpose loader-linkage with high breakout and lift forces. Powerful in loading and production.



Non stop operation

Don't forget your breaks. Otherwise it may easily happen that you are on the go around the clock. Because there is always something to do for a real Volvo allrounder: in the morning with a bucket, at noon with the loading fork, in the afternoon with the road sweeper. Or with another one of the more than 60 attachments, with which you can convert your compact Volvo to your individual needs. With hardly any loss of time, because the hydraulic quick change system is standard on all machines.





ENGINE

Engine: Deutz in-line 4-cylinder, 4 stroke, direct injection diesel engine with turbocharging, oil/air cooled.

Air cleaning:

1. Paper filter with indicator in cab
2. Safety filter

Engine	BF4L 1011F
Gross power @	2300 r/min
SAE J1995	51 kW
SAE J1995	69 PS
Net power @	2300 r/min
SAE J1349 - DIN ISO 1585	49 kW
SAE J1349 - DIN ISO 1585	66 PS
Max. torque @	1900 r/min
SAE J1349 netto	208 Nm
DIN ISO 1585	208 Nm
Cubic capacity	2,73 l
Bore	91 mm
Stroke	105 mm



ELECTRICAL SYSTEM

Rated voltage	12 V
Battery voltage	12 V
Battery capacity	88 Ah
Alternator rating	1120/80 W/A
Starter motor output	2,2 kW



DRIVETRAIN

Transmission: hydrostatic transmission, full power shift under load, both when changing direction (forward and reverse) and between ranges. Maximum drawbar force can be achieved in all ranges. «Inch/brake pedal» for variable machine speed control and power transfer to bucket hydraulics at constant engine rpm. Multi-function lever for change of direction, differential lock and use of the servo-control.

Axles: all-wheel drive by two rigid portal axles.

Differential locks: hydraulically actuated 100% differential locks in both axles.

Frame: solid front and rear frame, robot-welded. Articulating oscillating joint for optimum manoeuvrability and traction.

Oscillation at wheel, max.	260 mm
Track	1482 mm
Angle of oscillation	±10°
Tires: Size	365/80 R20
Rim	11 x 20

Speed, max.:	Standard
1st range forward/reverse	6,0 km/h
2nd range forward/reverse	20,0 km/h



SERVICE FILL CAPACITIES

Engine	10,5 l
Fuel tank	86,0 l
Front axle, total	11,0 l
Rear axle,	
incl. drop-box	12,0 l
Hydraulic tank, incl. hydraulic system	65,0 l



BRAKING SYSTEM

Service brake: reliable dual braking system, acting upon all four wheels.

1. Wear-free, hydrostatic inching brake
2. Central friction brake, actuated via «inch/brake pedal». First stage of pedal application actuates the inching facility, the last third of pedal application applies the central friction brake.

Parking brake: central drum brake, acting upon all four wheels.



HYDRAULIC SYSTEM

Thermostatically controlled oil circuit with integrated cooling system.

Hydraulic control valve: Servo-controlled, double acting control valve three spool system, with primary and secondary pressure valves.

1. Lifting function
2. Tilting function
3. Additional function for hydraulic QC
Unlock, neutral, lock
Preparation for operating hydraulic attachments with this function is available as an option.

Hydraulic oil filter: Combined suction and return-filtration cartridge with a 10 µm filter.

The filter can be replaced without emptying the hydraulic oil tank.

Hydraulic pump: gear type-pump

Hydraulic pump	
Flow	52 l/min
@ engine rpm	2300 r/min
Relief valve pressure	23 MPa



STEERING

Hydrostatic steering. Central articulating-ocillating joint with damping effect.

Steering pump: gear-type pump

Steering cylinder: 1 double-acting steering cylinder

Steering	
Angle of articulation	±40°
Steering pump	
Flow	25 l/min
@ engine rpm	2300 r/min
Relief valve pressure	18,5 MPa



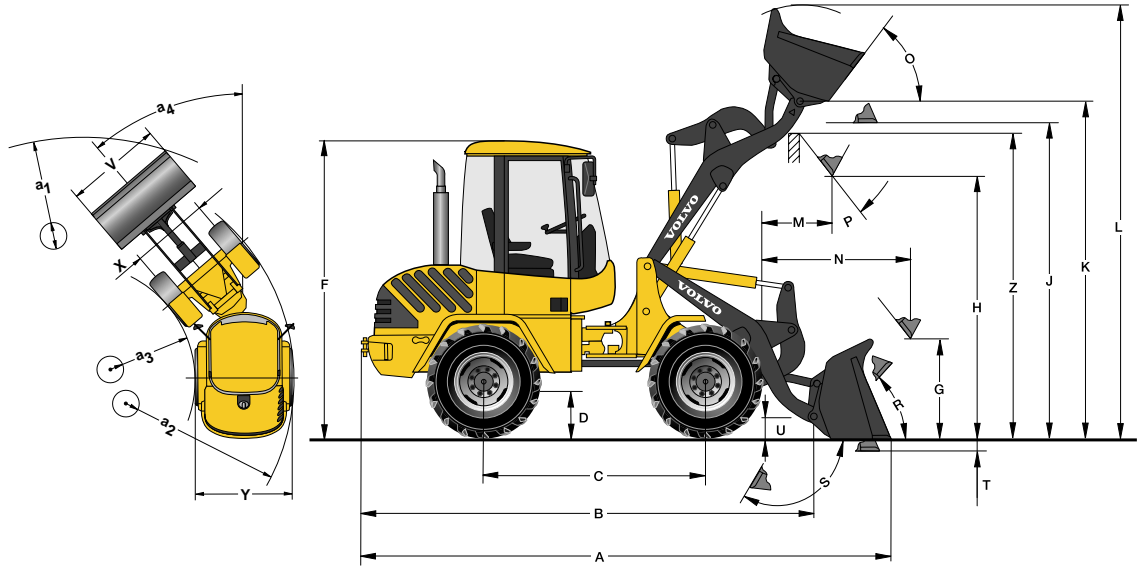
LINKAGE

Linkage system:	Z
Lift cylinders	2
Tilt cylinders	1
Lift time (loaded)	6,5 s
Lowering time (empty)	3,5 s
Dump time	1,5 s
Crowd time	2,0 s

DIMENSIONS • Z-BAR LINKAGE

L32B with Z-bar linkage,
Z-attachment carrier
and 365/80 R20 tires

B	4440	mm
C	2150	mm
D	440	mm
F	2710	mm
G	900	mm
J	3080	mm
K	3280	mm
O	67	°
P	45	°
R	50	°
S	140	°
U	200	mm
X	1482	mm
Y	1835	mm
Z	2970	mm
a ₂	3910	mm
a ₃	2030	mm
a ₄	±40	°

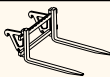


OPERATING DATA • Z-BAR LINKAGE

Data according to bucket type		General Purpose		Light Material		4-in-1	High-Tip
L32B with Z-bar linkage, Z-attachment carrier and 365/80 R20 tires							
Capacity heaped	m ³	1,0	1,1	1,3	1,5	0,9	1,5
Material density	kg/m ³	1800	1600	1300	1100	1800	1000
Static tipping load, straight (ISO / DIS)	kg	4180	4100	3900	3800	3800	3500
Static tipping load, full turn 40° (ISO / DIS)	kg	3700	3600	3500	3400	3350	3100
Hydraulic lifting capacity, max.	kN	44,0	43,0	42,0	41,0	40,5	36,0
Breakout force	kN	52,0	45,0	40,0	37,0	45,3	-
A Total length	mm	5240	5340	5450	5510	5340	5700
L Lift height, max.	mm	4230	4280	4360	4440	4150	5160
V Bucket width	mm	1900	1900	1900	2000	1900	2000
a ₁ Clearance circle	mm	8540	8610	8670	8800	8600	8930
T Digging depth	mm	115	115	115	115	120	115
H Dump height	mm	2600	2520	2440	2400	2500	3780
M Reach at max. height	mm	720	780	850	890	750	990
N Reach, max.	mm	1520	1580	1650	1690	1550	2220
Operating weight	kg	5500	5520	5550	5580	5710	5860

Data with Loading Fork

Centre of gravity 500 mm



Tipping load, full turn (ISO / DIS)	kg	2850
Payload according to EN 474-3, 60/80%	kg	1700/2250
Payload 80%, transport position, 40° full turn	kg	2500

L32B - Possible machine variations

Linkage/attach. carrier	Standard	High speed
Z-bar / Z	●	—
TP	—	—

STANDARD EQUIPMENT

Engine

Diesel engine, direct fuel injection
Extra fuel filter
Cold start aid
Dry-type air filter

Electrical System

Alternator 80 A

Lighting:

Main head lights (halogen)
full/dipped/asymmetrical
Working lights (2 front/1 rear)
Parking lights
Rear lights
Brake lights
Direction indicators
Hazard warning lights
Reversing lights
Cab lighting

Instrumentation & controls:

Multi-function lever
12 Volt accessories socket
Horn
Hazard warning switch
Safety start

Electronic

Information System:

Analog LED-information for:

Fuel level
Engine temperature
Drive system oil temperature
LED-illuminated symbols
(colour-coded) for:
Direction (forward/reverse)
Indicators (left/right)
Pre-heater

Main beam
Differential locks
Boom arm suspension system
(option)
Loading fork operation (option)
*LED-illuminated symbols (red)
with acoustic signal for:*

Parking brake
Air filter restriction
Drive system oil temperature
Engine temperature
Engine oil pressure
Battery charging
Return filter

*Touch pad with symbols and
integrated LEDs for:*

Parking lights
Working lights (front/rear)
Windscreen wiper (rear)
Rotating beacon (option)
Boom arm suspension system
on/off (option)

Locking and activation of Volvo
-attachment carrier (option)

Activation of multi-function
lever for directional change
*Digital LED display activated by
dual function keys for:*

Entry and retrieval of opera-
ting and service information
Anti-theft function control

Drivetrain

Hydrostatic drive
Operator-selected 100%
differential locks

Tires 365/80 R20

Hydraulic System

Gear-type pump
Control valve three-spool
system
3rd hydraulic circuit

Service and Maintenance

Tool kit
Wheel nut wrench

Cab, Exterior

ROPS/FOPS-cab with flexible
mountings
Walk-through cab
Lockable doors
All-round tinted safety glass
Windscreen wiper (front/rear)
Windscreen washer (front/rear)
Sliding window in the left door
Door stops
External rear view mirrors
(right/left)

Cab, Interior

4-way adjustable operator's
seat
Adjustable steering column
Seat belt
Sunvisor
Heater with air-filter and
defroster (front/rear)
Cab ventilation
Preparation for an optional air-
conditioner
Storage box in the cab

Working Equipment

Bucket level indicator

Hydraulic quick-change
attachment carrier

Carriage Body

Fenders and mudguards,
(front/rear)
Lockable engine hood
Vertical exhaust
Towing device
Lifting eyes

International Standards for Machines and Production

Quality:

DIN/ISO 9001

Safety:

CE - Criterion

Machine guide-lines 98/37/EC

ROPS ISO 3471

FOPS ISO 3449

Operating weight

ISO 7131

Tipping load / Payload:

ISO/DIS 14397-1

EMV (Electromagnetic

Compatibility)

89/336/EEC plus supplement

Environment:

DIN/ISO 14001

Sound insulation:

86/622/EEC, amendment

95/27/EC

German environmental seal

«low noise» RAL - UZ 53

OPTIONAL EQUIPMENT

Engine

Pre-heater

Hydraulics

Additional hydraulics for
3rd hydraulic circuit
4th hydraulic circuit
Additional pump

Cab

Handthrottle
Hand control inch valve
Airconditioner
Radio

Working Equipment

Boom arm suspension system

Environment

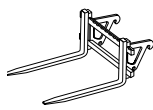
Initial filling of biodegradable
hydraulic oil

Safety

Anti-theft system
Protective guards for:
Main head lights
Working lights
Rear lights
Rotating beacon
Audible reverse alarm

ATTACHMENTS

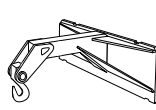
A small selection of the most popular attachments.
Further buckets and attachments available on request.



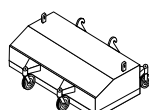
Loading
Fork



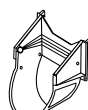
4-in-1
Bucket



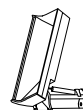
Material Handling
Arm



Sweeper



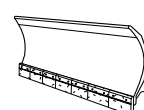
Tree Transplanting
Bucket



Side-Tip
Bucket



Hay/Manure
Fork



Snow
Plow

Under our policy of continuous product improvement, we reserve the right to change specifications and design without prior notice. The illustrations do not necessarily show the standard version of the machine.

VOLVO

Volvo Construction
Equipment

Ref. No. 21 2 430 5520
Printed in Germany 2001.02
Volvo, Konz

English
CWL
2908359