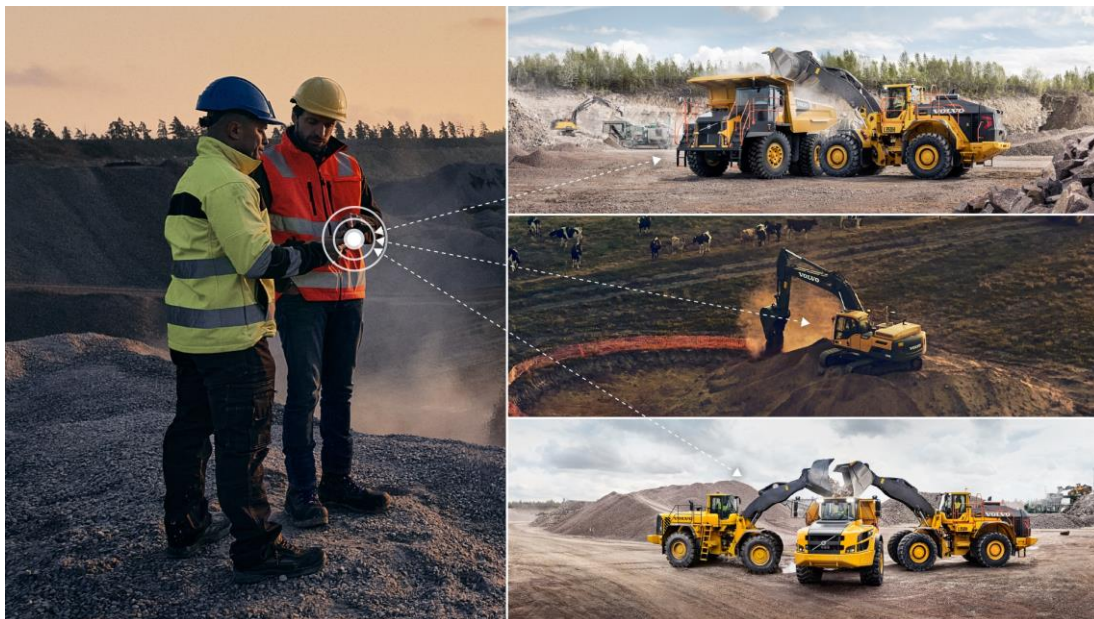


P R E S S R E L E A S E

## Volvo Construction Equipment launches Task Manager in North America to help keep projects on track

Managing a busy worksite can be time consuming and challenging, with many different and interdependent tasks and with numerous contractors, sub-contractors, sites and machines at play. Volvo Construction Equipment (Volvo CE) makes it easier to connect the pieces of the puzzle with Task Manager, a digital solution that is now launching in the North American market.



An easy-to-use web application, Task Manager is a worksite management tool that connects people, machines and projects, providing real-time visibility of the many tasks taking place on a busy site and helping ensure activities are delivered on target, on time and to budget.

Robert Nilsson, Service Offer Owner at Volvo CE, says: "We understand the challenges facing our customers in creating an accurate project timeline. Task Manager was developed with this in mind and with the objective to take the strain out of worksite management. By making it easy to see the status in real-time of the many activities on-site either from your mobile or desktop, Task Manager helps everyone stay on track – whatever the brand."

### Time for a change

[www.volvoce.com](http://www.volvoce.com)

Volvo Construction Equipment  
SE-405 08 Göteborg  
Sweden

Telephone  
+46 31 66 00 00

Registration No.  
556021-9338

Registered Office  
Eskilstuna,  
Sweden

With Task Manager, information on project status is instantly available wherever you are, whether on-site, in the office or at home, helping users stay apprised of developments and ensuring sites are as productive and efficient as possible. Once installed, new projects and work orders can easily be set up as required. Task Manager makes it possible to set targets and monitor progress, track material moved on site and manage data from a mixed fleet. And with all relevant information in one place, time spent on administrative tasks such as collating and consolidating data is reduced, leaving users more time to focus on the business in hand.

Task Manager is suitable for everyone from production managers and site supervisors to sub-contractors, all of whom have a vital role to play to keep infrastructure projects on target. Data can be filtered by different time frames, projects, activities, materials or work orders, providing updates in real-time and facilitating status update reports to management.

Task Manager also works together with the On-Board Weighing (OBW) functionality of Load Assist and Dig Assist with load receipts set up to automatically flow from the Volvo Co-Pilot into Task Manager. For customers without Load Assist or Dig Assist OBW, the operator can easily create manual load receipts.

Task Manager is available as a monthly subscription through local Volvo dealers. Find out more at <https://www.volvoce.com/united-states/en-us/services/volvo-services/productivity-services/task-manager/>.

March 2023

*Journalists wanting further information, please contact:*

**Dave Foster**

*Corporate Communications*

*Volvo Construction Equipment North America*

*dave.foster@volvo.com*

*717-300-6104*

**For more information, please visit [www.volvoce.com](http://www.volvoce.com)**

**For frequent updates, follow us on**

Twitter: @VolvoCEGlobal

LinkedIn: @Volvo Construction Equipment

Facebook: @VolvoCEGlobal

Instagram: @VolvoCE

YouTube: @Volvo Construction Equipment

Volvo Construction Equipment (Volvo CE) is a global leader in construction solutions, delivering premium products and services that combine power and performance with a more sustainable way of working. We are a company driven by people and together we have a purpose: To build the world we want to live in. Founded in 1832 and with a distribution network across every major market, our many dedicated experts around the world are fulfilling our

---

**V O L V O**

shared purpose through a focus on sustainability, electromobility and services. As well as our expanding range of electric machines and charging solutions, Volvo CE provides industry-leading haulers, loaders, excavators and much more, all built to suit the demands of our customers' varied construction and infrastructure needs. Volvo CE benefits from being connected to the Volvo Group, which also offers trucks, buses, power solutions for marine and industrial applications, financing and services that increase our customers' uptime and productivity. Through its holistic perspective, Volvo Group is committed to shaping the future landscape of sustainable transport and infrastructure solutions. For further company information and to explore our values further please visit [www.volvoce.com](http://www.volvoce.com)

---