

V O L V O

# 2023 | COMPACT EQUIPMENT



# Content

Find us on:





---

**Volvo Compact Products** **4**

Compact Wheel Loaders 6

Compact Excavators <12 t 12

Soil Compactors 28

Asphalt Compactors 30

---

**Volvo Services** **32**

---

**Notes** **42**

---

# Volvo Compact Products



# L45H

## Compact Wheel Loaders

---

### Short cycle times

- Differential lock front and rear
- Load-sensing hydraulics
- Powerful, fuel efficient Volvo engine
- Torque parallel linkage

### Take control

- Comfort Drive Control: lever steering (optional)
- Inch-brake pedal
- Joystick or multi-lever hydraulic pilot control

### The complete package

- Range of matched Volvo Attachments
- CareTrack telematics system: easy machine monitoring
- Genuine Volvo Parts
- Maintenance and Repair agreements

### Maximum uptime

- Reversible cooling fan
- Maintenance-free rear axle oscillation
- Dual element air filter protecting the engine
- Grouped grease points
- DPF regeneration occurs every 500 hours



		<b>L50H</b>	<b>L45H</b>
Engine		Volvo D4J	Volvo D4J
Engine gross power	kW	87	75
Max. torque ISO 9249, SAE J1349 net	Nm	466	416
Bucket capacity	m <sup>3</sup>	1.6	1.4
Tipping load (ISO/DIS 14397-1)	kg	5 750	5 250
... at full turn	°	40	40
Breakout force	kN	69	71
Hydraulic lifting capacity, max.	kN	86	70
Fork payload 80%	kg	3 840	3 530
Operating weight	kg	9 500	8 770
Maximum travel speed - Standard	km/h	20-30	20-30
Maximum travel speed - High speed	km/h	40-50	40-50
Based on machine configuration: With 1.6 m <sup>3</sup> / 2.1 yd <sup>3</sup> general purpose bucket (TPV linkage)			



# L35G

## Compact Wheel Loaders

---

### Fast cycle times

- Articulated oscillating joint and 100% different locks secure outstanding traction
- Portal axles design provides industry-leading ground clearance
- Independent hydraulic pumps enable simultaneous lifting and steering with no impact on boom speed
- Z-bar delivers high-breakout force and excellent parallel movement for bucket and forks applications

### Versatility

- Compact design minimizes transit time
- Volvo attachments brackets: efficient attachment changes
- Range of matched Volvo buckets, forks, grapples and material handling arms

### Enhanced uptime

- 100 hours lift frame greasing interval
- Easily accessed service points
- Genuine Volvo Parts: retain Volvo quality
- Control service costs with a Customer Support Agreement

### Easy and safe operation

- All-round visibility
- Adjustable steering column
- Single inching braking pedal
- FOPS/ROPS certified cab





		<b>L35G</b>	<b>L30G</b>
Engine		D3.3H	D3.3H
Engine gross power	kW	55.4	55.4
Max. torque ISO 9249, SAE J1349 net	Nm	-	-
Bucket capacity	m <sup>3</sup>	1.2	1
Tipping load (ISO/DIS 14397-1)	kg	4 350	3 850
. . . at full turn	°	40	40
Breakout force	kN	60.5	61
Hydraulic lifting capacity, max.	kN	61.5	57
Fork payload 80%	kg	2 600	2 400
Operating weight	kg	6 100	5 500
Maximum travel speed - Standard	km/h	20	20
Maximum travel speed - High speed	km/h	30	30

Based on L35G with cabin, 405/70 R20 tires Z-bar linkage and 1.2m<sup>3</sup> General purpose bucket and FEMIII forks.

Based on L30G with cabin, 365/80 R20 tires and 1m<sup>3</sup> General purpose bucket.



# L25 ELECTRIC

## Compact Wheel Loaders

NEW

### Everything you'd expect from Volvo

- Compact Design made for the tightest construction sites
- New HMI perfectly adapted to the new electric machine
- Rigid planetary axles with 100% switchable differential for maximum traction and minimal tire wear
- Best off-rad capability and stability
- Easy to maintain

### New levels of comfort

- Full LED lighting
- Low vibration
- Blows less dust
- Possibility to charge the machine at any point in time
- Less maintenance

### Get access to new markets

- Ability to work indoor
- Perfect fit for noise and dust sensitive areas
- Ability to work out of standard hours
- Equipped with On-Board charger
- Fast charging option – 0-100% in 2 Hours

### Zero emission electric power

- Locally emission free
- Sound level down tremendously
- Theft protected fixed battery
- Newest Li-Ion Battery 48V Technology with a capacity of 39kWh



### Work anything, anywhere

- Wide range of Volvo attachments
- Z attachment quick coupler with integrated 3rd hydraulic function

		L25 <b>NEW</b>	L20 <b>NEW</b>
Electric motor driveline (peak)	kW	36	28
Electric motor working hydraulics (peak)	kW	32	32
Standard bucket capacity	m <sup>3</sup>	0.9	0.8
Kinematics with attachment bracket design	Blank	Z	P
Tipping load (ISO/DIS 14397-1)	kg	3 350	3 000
...at full turn	°	38	38
Breakout force	kN	54.5	35
Hydraulic lifting capacity, max	kN	55	35
Fork payload 80%	kg	2 000	1 800
Max. dump height	mm	-	2 495
Operating weight	kg	5 080 - 5 260	4 500
Maximum travel speed - Standard	km/h	16	-
Battery voltage	V	48	48
Battery capacity	kWh	40	-
Battery capacity (standard)	kWh	-	33
Battery capacity (optional)	kWh	-	40
On board charging time 230 VAC 16A	hours	~12	<6h
Off board charging time 400 VAC 32A	hours	~2	<2h
Indicative runtime (depending on application)	hours	Up to 8 hours	Up to 8 hours

Based on machine configuration: L25 with z-bar linkage and 335/80 R18 tyres, 0.9 m<sup>3</sup> General Purpose bucket



# ECR58

## Compact Excavators

### The industry's best cab

- Most spacious cab in the industry
- Seat and consoles suspended together
- Large travel pedals, storage boxes, 12V and USB ports
- Best-in-class all-around visibility
- Quiet in-cab environment

### Precision controls

- Intuitive jogwheel and 5" color display
- Proportional fingertip controls
- Smooth combined movements

### Take on more

- Easy to transport and access tight spaces
- Factory-installed auxiliary hydraulics
- Customizable hydraulic flow settings
- Tilt Quick Coupler
- Steelwrist® Tiltrotator and factory-fit control system
- Range of Volvo Attachments

### Top of the class

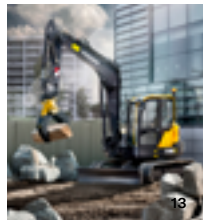
- Low center of gravity for excellent stability
- Superior breakout/tear out forces and lifting capacities
- Impressive tractive force
- Short swing radius

### Outstanding fuel efficiency

- Advanced hydraulic system with load sensing and flow sharing
- Eco Mode
- Auto-engine shutdown
- Engine auto-idle



		<b>ECR88D</b>	<b>ECR58</b>
Engine		Volvo D2.6H	D2.6H
Gross power	kW	43	35.5
Net power	kW	41	35
. . . at engine speed	r/min	2 000	2 200
Operating weight	kg	8 810 - 9 714	5 840
Operating weight - canopy version	kg	-	-
Bucket capacity	m <sup>3</sup>	0.079 - 0.333	0.11
Travel speed	km/h	2.6 / 5.2	2.6 / 4.5
Slewing speed	r/min	8.3	8.7
Breakout force	kN	50.7 / 50.4	41.9
Tear out force (arm breakout force)	kN	38.9 / 33.8	28.4
Overall width	mm	2 300	2 000
Overall length	mm	6 370 / 6 420	5 193
Main hydraulic pump max. flow	l/min	2 x 68 + 54	143
Boom swing angle, left / right	°	70 / 60	75 / 55



# ECR50

## Compact Excavators

---

### Durable by design

- Zero tail swing
- In-track boom swing
- New digging equipment
- Undercarriage and hoods from larger size machine

### Versatile performer

- True 5 tonne machine
- Stability and hydraulic performance
- Pre-set hydraulic modes and multiple auxiliary line options
- Compatible with a wide range of attachments

### Maximum uptime

- 50-hour greasing intervals
- Patented multifunction hydraulic filter, protecting the hydraulic system
- Easily accessed service points, wide-opening engine hood
- Auto engine shutdown
- Genuine Volvo Parts

### Intuitively efficient

- Simple controls layout
- Intuitive jogwheel and 5" color display
- Proportional fingertip controls
- Large travel pedals
- Automatic two-speed travel



		<b>ECR50</b>	<b>ECR40D</b>	<b>ECR35D</b>	<b>ECR25D</b>	<b>ECR18E</b>
Engine		D2.4H	Volvo D1.7A	Volvo D1.7A	D1.1A	D0.9A
Gross power	kW	31.2	18.5	18.5	15.6	12
Net power	kW	30.7	21.5	21.5	14.8	11.2
. . . at engine speed	r/min	2 200	2 200	2 200	2 400	2 300
Operating weight	kg	5 050	3 880 - 4 460	3 520 - 4 090	2 490 - 2 960	-
Operating weight - canopy version	kg	-	3 745 - 4 460	3 385 - 4 090	2 400 - 2 870	1 700
Bucket capacity	m <sup>3</sup>	0.11	0.052 - 0.150	0.052 - 0.150	0.034 - 0.119	0.014 - 0.051
Travel speed	km/h	2.7 / 4.4	2.7 / 4.5	2.7 / 4.5	2.4 / 4.5	1.8 / 3.5
Slewing speed	r/min	8.5	9	9	9.4	9.5
Breakout force	kN	36.2	32.9	30.7	22.3	12.9
Tear out force (arm breakout force)	kN	25.9	23.7	20.7	17.8	7.95
Overall width	mm	2 000	1 780	1 780	1 550	995 / 1 352
Overall length	mm	5 198	4 780	4 660	3 924 / 4 045	3 431
Main hydraulic pump max. flow	l/min	120	103	103	58	34
Boom swing angle, left / right	°	75 / 55	76 / 56	76 / 56	72 / 56	-

Based on machine configuration:

ECR40D: With 300mm rubber tracks and short arm

ECR35D: With 300mm rubber tracks and short arm

ECR25D: Operating weight with 75 kg operator, 250 mm rubber track, short arm and 500 mm direct fit bucket.



# ECR25 ELECTRIC

## Compact Excavators

### Zero emission electric power

- No emission locally
- Sound level down tremendously
- Maintenance free battery
- Low electricity cost
- No power consumption when machine not working

### New levels of comfort

- Low vibration
- Color display with jogwheel navigation
- Intuitive and easier to operate
- Full LED lighting
- Blows less dust



### Everything you'd expect from Volvo

- Monthly greasing only
- Patented hydraulic filter
- Hoses protected inside boom and arm
- Automatic travel speed

### Work anything, anywhere

- Same performance as its diesel equivalent
- Ultimate lifting capacity
- Zero-tail swing radius
- Front corner stays within tracks width
- Wide range of Volvo attachments

### Get access to new markets

- Ability to work indoor
- Ability to work out of standard hours
- Ability to work full shift
- Fast charging option



		<b>ECR25</b>	<b>ECR18</b>
Operating weight	kg	2 680 - 2 780	1 765
Maximum digging depth (short/long arm)	mm	2 461 - 2 761	2 234 - 2 434
Maximum dump height (short/long arm)	mm	2 784 - 2 957	2 444 - 2 588
Travel speed, low / high	km/h	2.4 / 4.5	1.9 / 3.8
Breakout force	kN	22.3	12.9
Tear out force (arm breakout force) (short/long arm)	kN	15 - 17.7	7.95 - 6.95
Overall width	mm	1 550 - 0	995 - 1 352
Overall length (short/long arm)	mm	3 876 - 4 008	3 431 - 3 309
Main hydraulic pump max. flow	l/min	58	-
Electric motor (peak)	kW	18	-
Battery voltage	V	48	48
Battery capacity	kWh	20	16
On board charging time 230 VAC 16A	hours	~ 5 h	-
Off board charging time 400 VAC 32A	Blank	~ 50 min for 80% charge	-
Sound pressure level (L <sub>pA</sub> ) at operator's position	dB	74	-
Sound power level (L <sub>WA</sub> ) around the machine	dB	84	-
Indicative runtime (depending on application)	hours	Up to 4 hours	Up to 4 hours



# EC60E

## Compact Excavators

---

### Customer Support Agreements

Customer Support Agreements offer preventive maintenance, total repairs and a number of uptime services.

### Attachments versatility

The Volvo attachments range allows the machine to take on a variety of tasks for a wide range of jobs and applications.

### Boosted performance

Do more in less time with increased combined digging efforts, a 10% improvement in traction, swing force and lifting capacity.

### Larger cab

More space results in comfortable and relaxed operation, increasing production and reducing fatigue.



### Serviceability

Ground level service access, new main control valve location, convenient greasing points and easy to clean cooling unit reduce service time.

		<b>EC60E</b>
Engine		D2.6H
Gross power	kW	44.3
Net power	kW	42.7
. . . at engine speed	r/min	2 200
Operating weight	kg	5 500~6 800
Operating weight - canopy version	kg	-
Bucket capacity	m <sup>3</sup>	0.07 ~ 0.265
Travel speed	km/h	2.4 / 4.4
Slewing speed	r/min	9.5
Breakout force	kN	43.3
Tear out force (arm breakout force)	kN	28.8
Overall width	mm	1 920
Overall length	mm	5 800 / 5 865
Main hydraulic pump max. flow	l/min	2 x 60.5
Boom swing angle, left / right	°	80 / 50



# EC35D

## Compact Excavators

---

### Built ready

Volvo's durable attachments have been purpose-built to deliver maximum productivity and long service life in combination with Volvo machines

### ECO mode

By simply pressing a button, the unique Volvo ECO mode reduces fuel consumption by up to 10%.



### Operator environment

The industry-leading, spacious Volvo FOPS1 on top, TOPS and ROPS cab boasts all around visibility, ergonomically positioned controls and excellent vibration and noise insulation.

### Patented hydraulic filter

Filtration occurs when the tank is filled or topped up and before the oil returns via the drain lines. The transparent bowl enables easy oil level and contamination checks.

		<b>EC35D</b>	<b>EC27D</b>
Engine		Volvo D1.7A	Volvo D1.1A
Gross power	kW	18.5	15.6
Net power	kW	21.5	14.8
. . . at engine speed	r/min	2 200	2 400
Operating weight	kg	3 530	2 730
Operating weight - canopy version	kg	3 395	2 640
Bucket capacity	m <sup>3</sup>	0.052 - 0.150	0.034 - 0.119
Travel speed	km/h	2.7 / 4.5	2.6 / 4.8
Slewing speed	r/min	9	9.4
Breakout force	kN	32.9	24.6
Tear out force (arm breakout force)	kN	23.7	18.1
Overall width	mm	1 780	1 550
Overall length	mm	4 620	3 933 / 3 811
Main hydraulic pump max. flow	l/min	103	65
Boom swing angle, left / right	°	76 / 56	72.5 / 53

Based on machine configuration:

EC35D: With 300mm rubber tracks and short arm

EC27D: Operating weight with 75kg operator, 300mm rubber track, short arm and 500mm direct fit bucket.



# EC20E

## Compact Excavators

---

### Safety first

- High visibility entry step and cab handrail, orange seatbelt
- 4 large easily accessible tie-down points on the upper frame
- Controls lock options (switch, seat operator presence or buckled seatbelt sensor)
- Easy entrance-exit to cab

### Maximize profitability

- Convenient access to engine compartment thanks to hinged fuel tank
- Auto engine shutdown and auto-idle (options)
- All-around flat windows
- 50-hour greasing intervals
- Patented hydraulic filter

### Small but tough

- All-around steel panels
- High-profile cast counterweight
- Protected hoses, routed inside the boom
- In-track boom swing

### The complete package

- Range of Volvo buckets and quick couplers
- Matched Volvo breaker
- Genuine Volvo Parts
- Volvo Financial Services

### The operator's choice

- Easy front window opening with lower window removal and storage ability
- Fingertip controls, with adjustable hydraulic flow
- Simple controls layout
- Automatic 2-speed travel
- Smooth combined movements



		<b>EC20E</b>	<b>EC18E</b>	<b>EC15E</b>
Engine		D0.9A	D0.9A	D0.9A
Gross power	kW	12	12	12
Net power	kW	11.2	11.2	11.2
. . . at engine speed	r/min	2 300	2 300	2 300
Operating weight	kg	1 965	1 810	1 640
Operating weight - canopy version	kg	1 881	1 732	1 556
Bucket capacity	m <sup>3</sup>	0.028 - 0.078	0.014 - 0.051	0.014 - 0.051
Travel speed	km/h	2.5 / 4.6	1.8 - 3.5 / 2.5 - 4.6	1.9
Slewing speed	r/min	9.5	9.5	9.5
Breakout force	kN	18.3	12.9	12.9
Tear out force (arm breakout force)	kN	12.3	7.95	7.95
Overall width	mm	995 / 1 352	995 / 1 352	995
Overall length	mm	3 707	3 550	3 550
Main hydraulic pump max. flow	l/min	48	34 / 48	34
Boom swing angle, left / right	°	-	-	-



# EC18 ELECTRIC

Compact Excavators

NEW



## Work anytime, anywhere

Create new commercial opportunities for your business with the EC18 Electric, all while benefiting the environment and communities.

## Create a better work environment

Whether working in the machine or on-site, all personnel benefit from the absence of exhaust fumes, industry leading low noise levels and the significant reduction in vibration and heat.

## Make the most of every charge

Featuring industry-leading battery technology, the EC18 Electric offers up to 5 hours of runtime and comes with a range of solutions to help manage the charging process more efficiently.

## Choice of charging solutions

The EC18 Electric can be recharged in as little as 1.25 hours. Choose between multiple charging solutions depending on the requirements of your operation.



		<b>EC18</b>	<b>NEW</b>
Operating weight	kg	1 960	
Maximum digging depth (short/long arm)	mm	2 234 - 2 434	
Maximum dump height (short/long arm)	mm	2 444 - 2 588	
Travel speed, low / high	km/h	1.9 / 3.8	
Breakout force	kN	12.9	
Tear out force (arm breakout force) (short/long arm)	kN	7.95 - 6.95	
Overall width	mm	995 - 1 352	
Overall length (short/long arm)	mm	3 550 - 3 431	
Battery voltage	V	48	
Battery capacity	kWh	20	
Indicative runtime (depending on application)	hours	Up to 5 hours	



# EW60E

## Compact Excavators

---

### Boosted performance

Do more in less time with outstanding combined digging efforts, powerful travel force, fluid swing force and optimal lifting capacity.

### Attachments versatility

The Volvo attachments range allows the machine to take on a variety of tasks for a wide range of jobs and applications.

### Larger cab

A comfortable working space results in better operation, increasing production and reducing fatigue.

### Serviceability

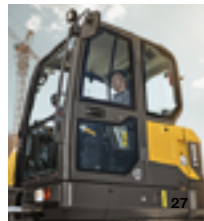
Ground level service access, including great access to the main control valve, convenient greasing points and easy to clean cooling unit reduce service time.



### Customer Support Agreements

Customer Support Agreements offer preventive maintenance, total repairs and a number of uptime services.

		<b>EW60E</b>
Operating weight	kg	5 550~6 960
Gross power	kW	47.30
... at engine speed	r/min	2 400
Bucket capacity	m <sup>3</sup>	0.07~0.265
Max lifting capacity	kg	3 030
... at reach / height	m	3.0/1.0
Max. digging reach	mm	6 024
Max. digging depth	mm	3 292
Breakout force (ISO) (Normal)	kN	43.30
Breakout force (ISO) (Boost)	kN	-
Max speed	km/h	20/30
Tail swing radius	mm	1 650
* Based on machine configuration: Machine with 2.9m boom, 1.6m arm, 0.142m <sup>3</sup> bucket, Standard counterweight, Dozer blade.		
** Chosen travel speed option may be affected by local regulations.		
*** Real Max Travel speeds may be different depending on option configurations.		



# SD45B

## Soil Compactors

---

### Versatility for all your jobs

Whether operating in confined spaces or across difficult terrain, the SD45B provides solid stability and versatility.

### More work, fewer passes

Achieve density in fewer passes with high centrifugal force, high amplitude and heavy drum weight.

### Volvo puts you in control

Reduce fatigue with all-around visibility, the adjustable seat and easy-to-reach controls.

### Efficient from the ground-up

Optimize service efficiency with the hinged engine hood and tilt able operator's platform for swift ground-level access.



		<b>SD45B</b>
Operating weight (with ROPS)	kg	4 948
Operating weight (with Cab & inside scraper)	kg	5 288
Centrifugal force	kN	93 / 75
Vibration frequency	Hz	27.5 / 30.8
Optional 5x frequency (High Amplitude)	Hz	-
Gradeability	%	45
Rated engine power	kW	55
Amplitude	mm	1.99
Drum width	mm	1 372
Articulation angle	°	41
Oscillation angle	°	12

Based on Smooth drum configuration



# DD25B

## Asphalt Compactors

---

### Pressurized water system

A rust-proof, pressurized water system provides consistent flow to the drum surfaces – eliminating asphalt pick-up.

### High performance

With Volvo's high frequency compaction, the DD25B can travel faster while still maintaining the correct impact spacing necessary for high productivity and a smooth finish.



### 360° visibility

With an optimally positioned sliding seat and a sloping engine hood design, the operator will experience industry-leading, all-around visibility.

### Reduced fuel consumption

The engine is perfectly matched to the DD25B's hydraulic system – delivering high performance and a 7% reduction in fuel consumption.

### Intermittent water spray

The DD25B boasts an industry-leading water tank capacity. The operator can adjust the time between water sprays to the drums to conserve water and reduce refilling downtime.

		DD25B	DD15
Operating weight (with ROPS)	kg	2 515* - 2 620**	1 529* - 1 633**
Drum or rolling width	mm	1 000* - 1 200**	900* - 1000**
Rated engine power	kW	18.2	12.2
Vibration frequency	Hz	55 / 66.7	66.7
Amplitude	mm	0.54* - 0.5**	0.37* - 0.4**
Overall length	mm	2 540	2 035
Overall width	mm	1 090* - 1 290**	1 018* - 1 085**
Overall height	mm	2 955	2 240
Configuration		Vibratory	

\*Narrow drum

\*\*Wide drum



# Volvo Services

---

To ensure your business runs smoothly, Volvo invests in the intelligent engineering of all our machines – but we don't stop there. As your partner, we support what you do with the equipment – how you use it, maintain it, pay for it and even how you sell it. Our portfolio of products and services is designed to complement your machine's performance and boost your profitability. Get started with Volvo Services and customize a Volvo Services Agreement – because your business is our business.





# Safety Services



## **Volvo safe Quick Couplers on compact excavators**

Standard locking devices on Volvo Quick Couplers (Pin grabber and Symmetrical) prevent the risk of dropping the bucket.

## **Orange Seat belt on compact excavators**

All compact excavators are equipped in standard with an orange seatbelt. Thanks to the highly visible orange seatbelt, co-workers and site managers can easily and visibly ensure that the operator is using the device safely.

## **Safety belt system on compact wheel loaders**

Driveline will shut off if safety belt is not engaged.

## **Operator's environment**

Safety is built-in to all Volvo compact excavators with a ROPS/TOPS/FOPS cab and canopy and a large uncluttered entrance.

## **Visibility all around**

All Volvo compact machines are equipped with a spacious operator environment offering excellent all-around visibility.









# Financial Services



## **On-balance financing**

Own a machine through regular repayments without investing all of your capital at once.

## **Insurance**

We understand your business. We know your industry. We know the risks you face and the protection you need. New and used, from a single machine to an entire fleet.

## **Full service solutions**

Your machine, parts & service, finance and insurance all in one offer.



## Rental Services



Contact your local Volvo Dealer  
for more information

Find your dealer on:  
[volvoce.com/europe/dealers](http://volvoce.com/europe/dealers)

# Volvo Attachments



Get the most out of your machine with our wide range of Volvo attachments. Every part is just as important as the next, and our selection of Volvo attachments are designed to perfectly match your machine – resulting in one secure and reliable unit, for improved cycle times and better fuel efficiency. We can help you do even more by selecting and customizing the right attachment to fit your needs.





# Genuine Volvo Parts



Retain high performance and peace of mind with Genuine Volvo Parts, because every component is part of something bigger. Maintain productivity and machine uptime with our range of readily available, tested and approved parts – all backed by Volvo 2 years warranty. Only by using Genuine Volvo Parts, can you protect your investment, extend machine lifecycle and guarantee long-lasting performance.







# New Life Services



## **Volvo Reman**

Keep your machine running for the long haul – while helping to reduce owning and operating costs. Remanufactured products have less environmental impact since a majority of the energy consuming components have been recycled.

## **Warranty on new spare parts**

2 years warranty on all Volvo spare parts used for new life services and repair.

# Notes

.....

.....

.....

.....

.....

.....

.....

.....

.....

.....

.....

.....

.....

.....

.....

.....

.....

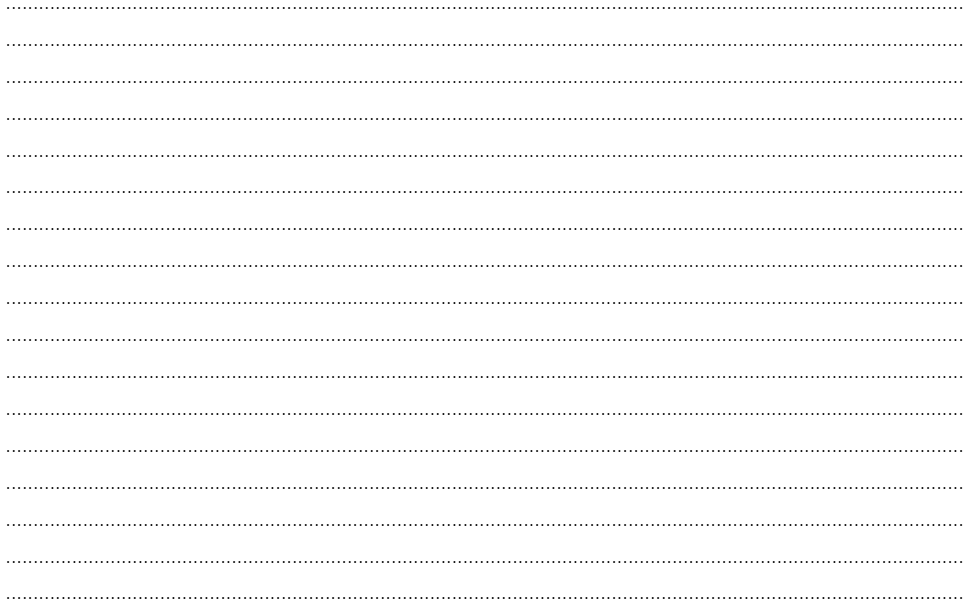
.....

.....

.....

.....

.....



**V O L V O**